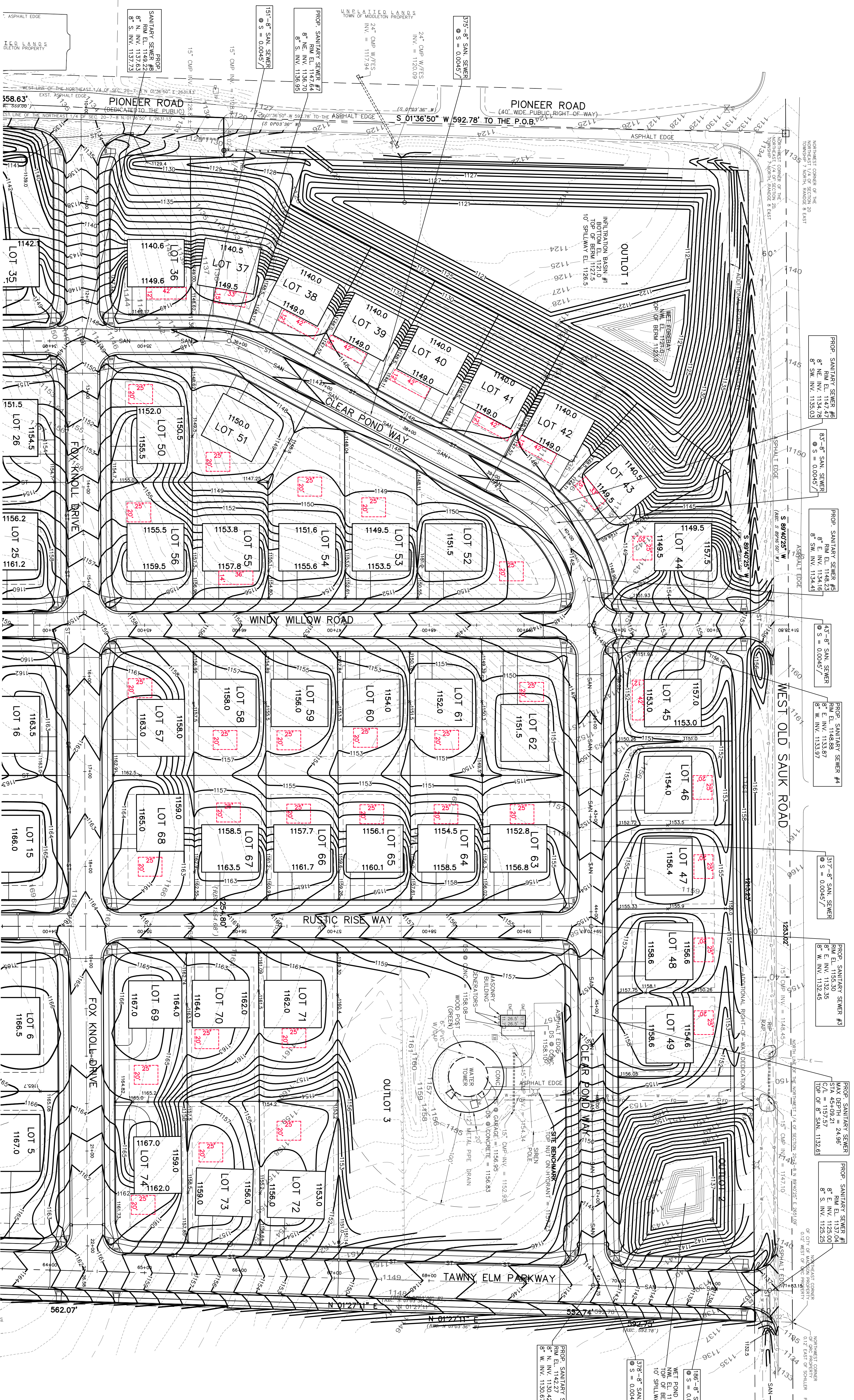


FOX KNOLL SUBDIVISION

MADISON, WISCONSIN

CJE NO.: 2019R2-02
NOVEMBER 24, 2021



LEGEND

1151- EXISTING CONTOUR
1144.5- PROPOSED CONTOUR
ST- PROPOSED ELEVATION
PROPOSED STORM SEWER

USABLE OPEN SPACE
AS DEFINED, A MINIMUM OF 500 SQUARE FEET OF USABLE OPEN SPACE IS REQUIRED. USABLE OPEN SPACE SHALL BE AT GROUND LEVEL IN A COMPACT AREA OF NOT LESS THAN 200 SQUARE FEET, WITH A MINIMUM OF 10 FEET CLEARANCE FROM ALL ADJACENT BUILDINGS AND DRIVEWAYS. USABLE OPEN SPACE SHALL BE OUTSIDE OF A REQUIRED FRONT OR CORNER SIDE YARD, AS EXTENDED TO THE REAR LOT LINE.

20' = 20'± (500 S.F.) BOX SHOWN ON EACH LOT REPRESENTS THE MINIMUM 500 SQUARE FEET OF USABLE OPEN SPACE AVAILABLE FOR EACH LOT. ANY ALTERNATIVE AREAS HAVE BEEN SHOWN AND DIMENSIONED ON PLAN.

GRAPHIC SCALE
1 inch = 50 ft

GRADING PLAN

C1.0

DIGGERS HOTLINE
Toll Free (800) 242-8511
Madison, WI 53703
Hearing Impaired: TDD (608) 242-2289
www.diggershotline.com