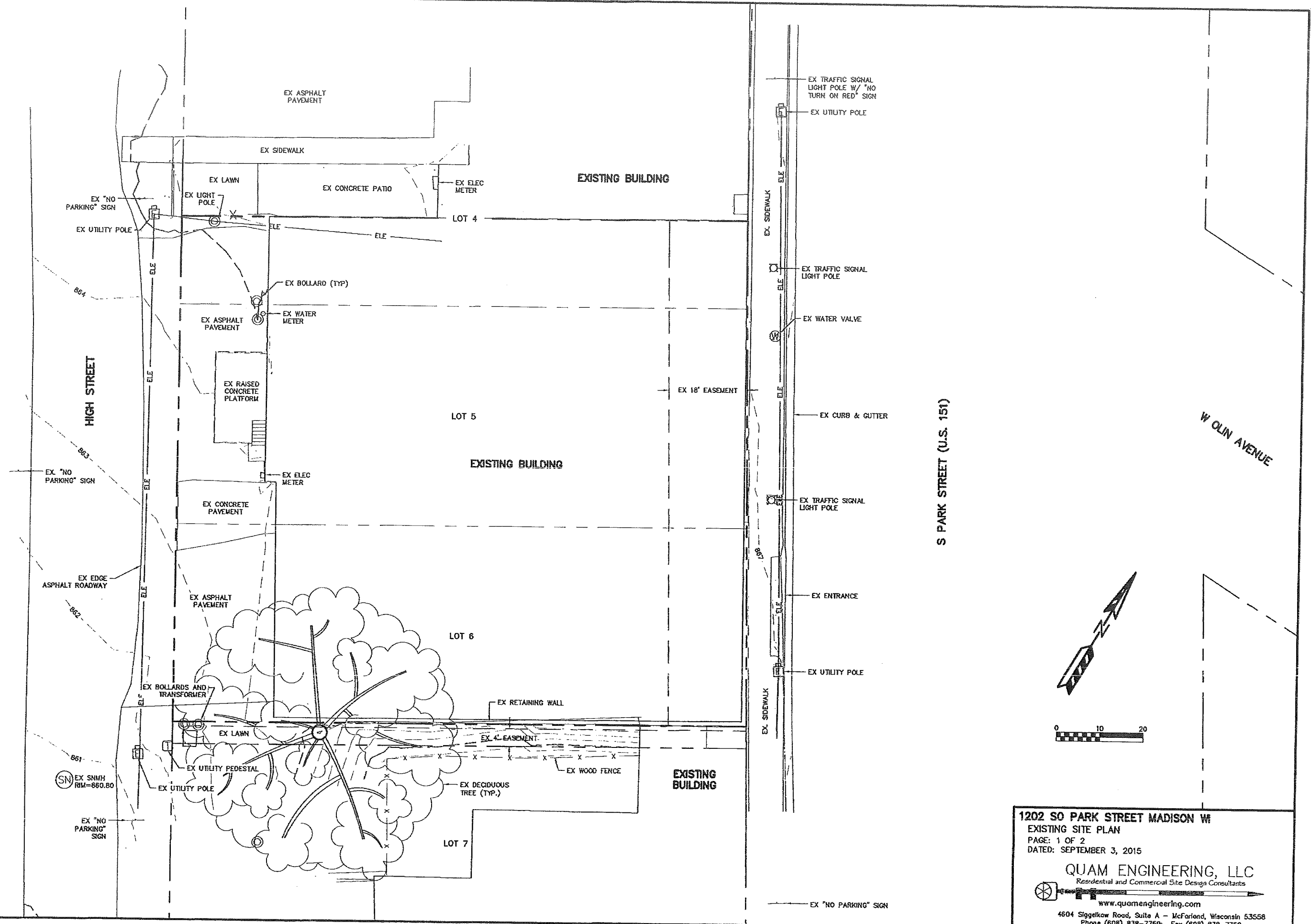


4

RB11BASE.DWG

QUAM ENGINEERING, LLC 4604 Siggelkow Road, Suite A - McFarland, WI 53558 (608) 838-7750

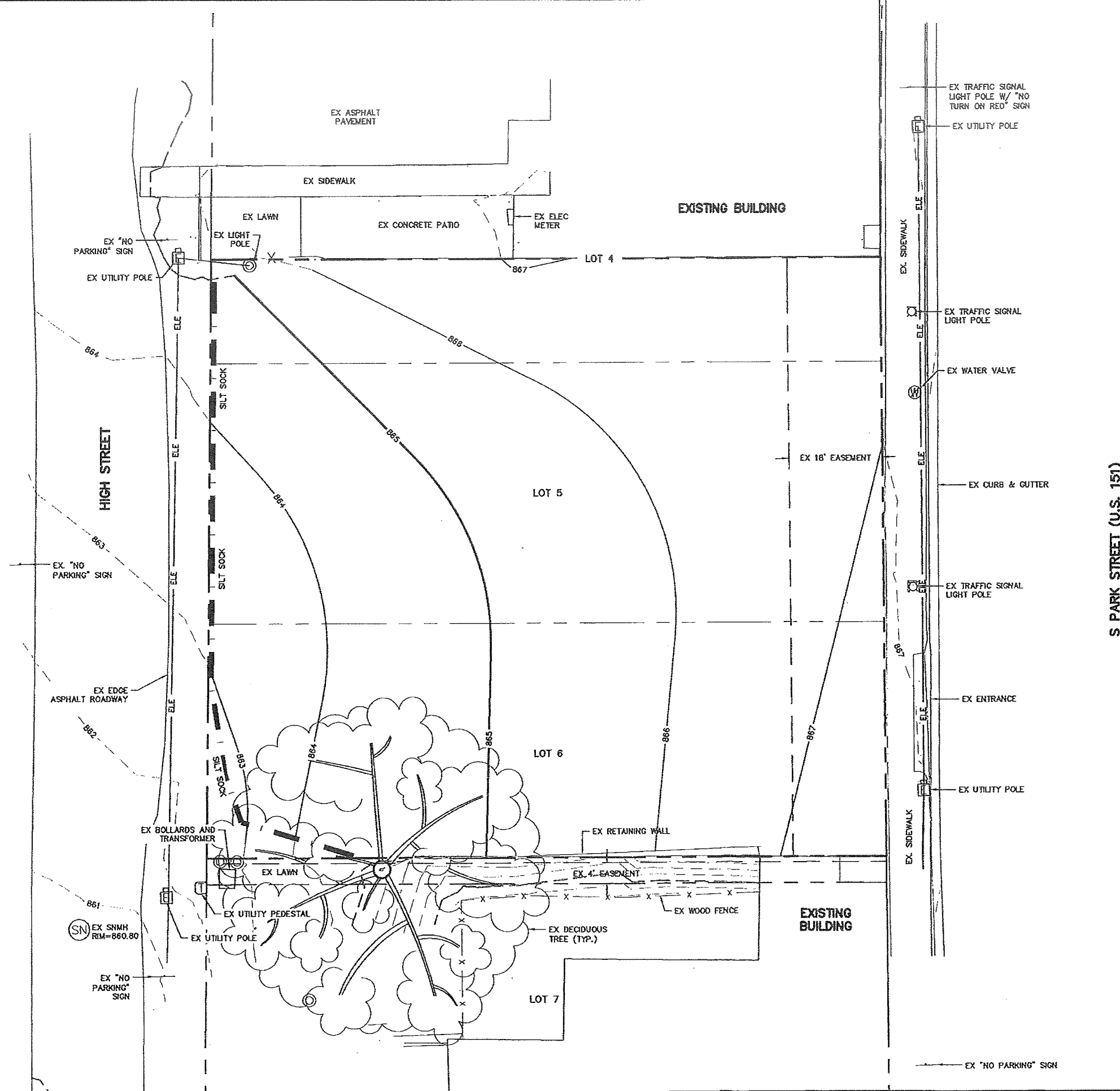


1202 SO PARK STREET MADISON WI
 EXISTING SITE PLAN
 PAGE: 1 OF 2
 DATED: SEPTEMBER 3, 2015

QUAM ENGINEERING, LLC
 Residential and Commercial Site Design Consultants
 www.quamengineering.com

4604 Siggelkow Road, Suite A - McFarland, Wisconsin 53558
 Phone (608) 838-7750; Fax (608) 838-7752

3/2 COPIES



EROSION NOTES:
 THE EXISTING PAVEMENT SURFACE SHALL ACT AS THE CONSTRUCTION ENTRANCE. THE ASPHALT SURFACE IS TO BE MAINTAINED BY THE CONTRACTOR BY A CONTROL WHICH WILL PREVENT THE TRACK OF MUD OR DRY SEDIMENT ONTO THE ADJACENT PUBLIC STREETS. SEDIMENT REACHING THE PUBLIC ROAD SHALL BE REMOVED BY STREET CLEANING (NOT HYDRAULIC FLUSHING) BEFORE THE END OF EACH WORKDAY.

EROSION CONTROL DEVICES SHALL BE INSTALLED PRIOR TO GRADING OPERATIONS AND SHALL BE PROPERLY MAINTAINED FOR MAXIMUM EFFECTIVENESS UNTIL VEGETATION IS ESTABLISHED. ALL EROSION CONTROL MEASURES AND STRUCTURES SERVING THE SITE MUST BE INSPECTED AT LEAST WEEKLY OR WITHIN 24 HOURS OF A 0.5 INCH RAIN EVENT. ALL MAINTENANCE WILL FOLLOW AN INSPECTION WITHIN 24 HOURS.

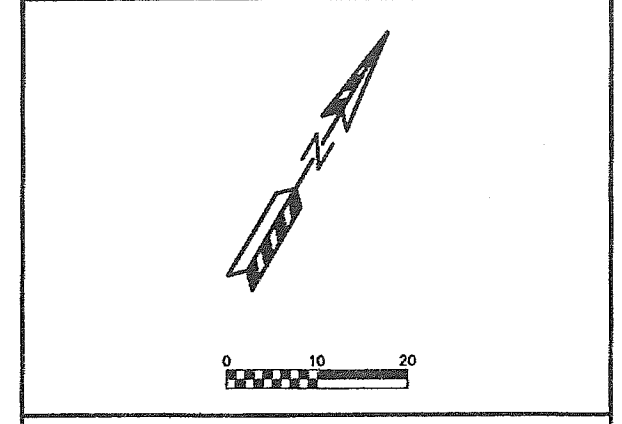
CUT AND FILL SLOPES SHALL BE NO GREATER THAN 3:1.
 EROSION CONTROL IS THE RESPONSIBILITY OF THE CONTRACTOR UNTIL ACCEPTANCE OF THIS PROJECT. EROSION CONTROL MEASURES AS SHOWN SHALL BE THE MINIMUM PRECAUTIONS THAT WILL BE ALLOWED. THE CONTRACTOR SHALL BE RESPONSIBLE FOR RECOGNIZING AND CORRECTING ALL EROSION CONTROL PROBLEMS THAT ARE A RESULT OF CONSTRUCTION ACTIVITIES. ADDITIONAL EROSION CONTROL MEASURES, AS REQUESTED IN WRITING BY THE STATE OR LOCAL INSPECTORS, OR THE DEVELOPER'S ENGINEER, SHALL BE INSTALLED WITHIN 24 HOURS.

TIME SCHEDULE:
 NOVEMBER 16, 2015 INSTALL INITIAL EROSION CONTROL DEVICES.
 NOVEMBER 16, 2015 - JUNE 30, 2016 DEMOLISH EXISTING BUILDING & PAVEMENT AND RESTORE PERVIOUS DISTURBED AREAS.

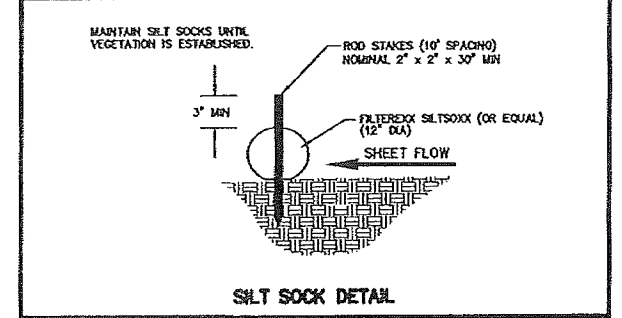
RESTORATION NOTES:
 ALL PERVIOUS DISTURBED AREAS SHALL RECEIVE A MINIMUM OF FOUR (4) INCHES OF TOPSOIL, FERTILIZER, SEED, AND MULCH. RESTORATION WILL OCCUR AS SOON AFTER THE DISTURBANCE AS PRACTICAL. SEED MIXTURE NO SHALL BE USED ON ALL DISTURBED AREAS. MIXTURES SHALL BE IN ACCORDANCE WITH SECTION 830 OF D.O.T. SPECIFICATIONS. AN EQUAL AMOUNT OF JURINAL RYEGRASS SHALL BE ADDED TO THE MIX.
 SEED MIXTURES SHALL BE APPLIED AT THE RATE OF FOUR (4) POUNDS PER 1,000 SQUARE FEET. FERTILIZER SHALL BE APPLIED AT THE RATE OF FOUR (4) POUNDS PER 1,000 SQUARE FEET. MULCH SHALL CONSIST OF HAY OR STRAW APPLIED AT THE RATE OF 2 TONS PER ACRE.
 FERTILIZER SHALL MEET THE MINIMUM REQUIREMENTS THAT FOLLOW: NITROGEN, NOT LESS THAN 16%; PHOSPHORIC ACID, NOT LESS THAN 8%; POTASH, NOT LESS THAN 6%.

OWNER:
 DAVE MAYLAND
 1705 PARLIAMENT CT
 LAKE FOREST, IL 60045

ENGINEER:
 QUAM ENGINEERING, LLC
 ATTN: RYAN QUAM
 4604 SIGGELKOW ROAD, SUITE A
 MCFARLAND, WI 53558



TO OBTAIN LOCATION OF PARTICIPANTS' UNDERGROUND FACILITIES BEFORE YOU DIG IN WISCONSIN
CALL DIGGERS HOTLINE
 1-800-242-8511
 TOLL FREE
 TDD(FOR THE HEARING IMPAIRED)(800)542-2289
 WIS. STATUTE 182.0175 (1874) REQUIRES MIN. OF 3 WORK DAYS NOTICE BEFORE YOU EXCAVATE



1202 SO PARK STREET MADISON WI
 DEMOLITION/GRADING & EROSION CONTROL PLAN
 PAGE: 2 OF 2
 DATED: SEPTEMBER 3, 2015

QUAM ENGINEERING, LLC
 Residential and Commercial Site Design Consultants.
 www.quamengineering.com
 4604 Siggelkow Road, Suite A - McFarland, Wisconsin 53558
 Phone (608) 838-7750; Fax (608) 838-7752

32 copies