

App

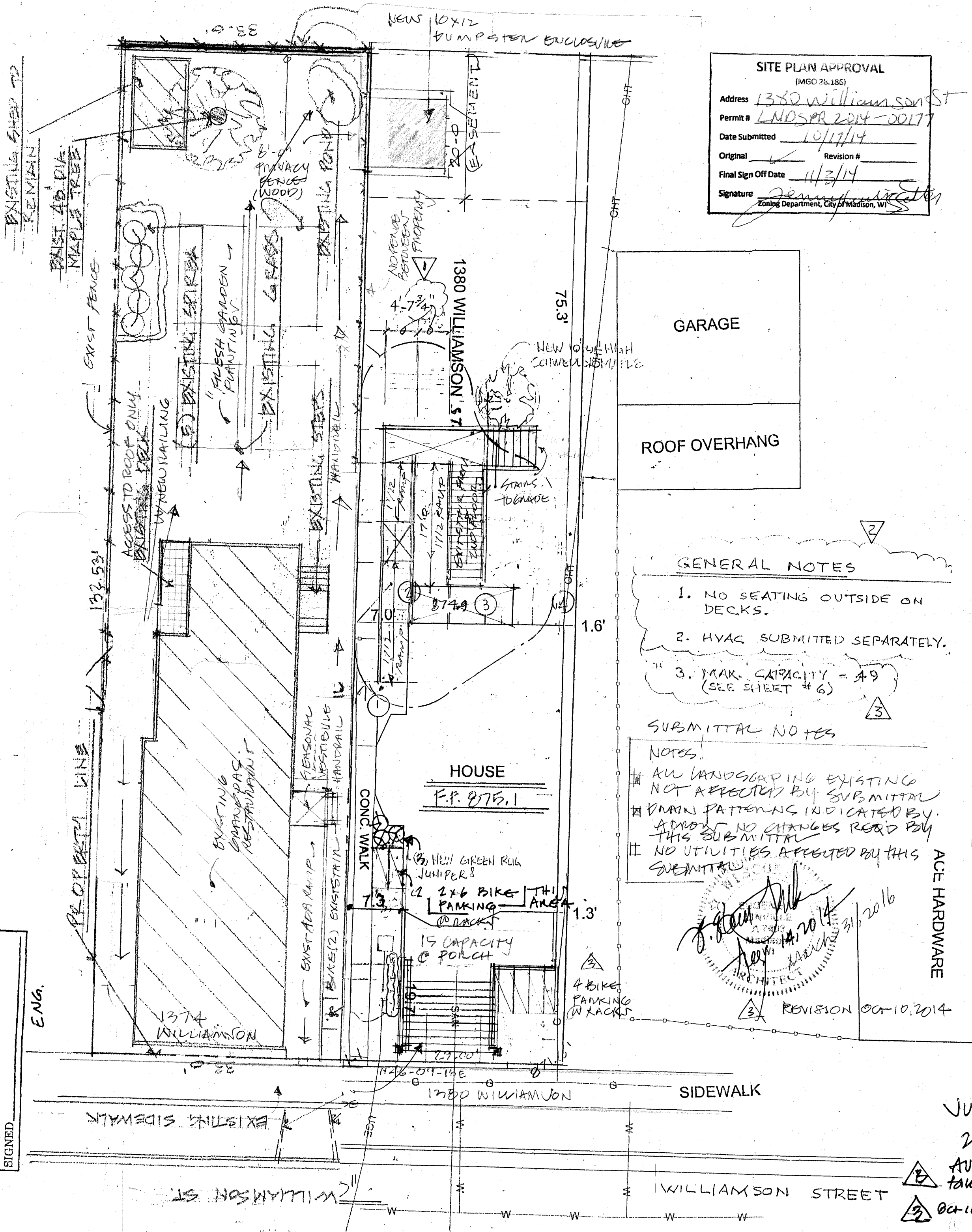
**SITE PLAN APPROVAL**  
(MGO 28.185)

Address 1380 Williamson St  
 Permit # LNDSPR 2014-00177  
 Date Submitted 10/17/14  
 Original  Revision # \_\_\_\_\_  
 Final Sign Off Date 11/3/14  
 Signature Jenny [Signature]  
 Zoning Department, City of Madison, WI

LNDSPR-2013-06026  
 PLAN/PARKING FACILITY APPROVAL

ADDRESS 1374 Williamson St.  
 ID# \_\_\_\_\_ DATE SUBMITTED 7/10/13  
 ORIGINAL \_\_\_\_\_ REVISION# 2  
 FINAL SIGN OFF DATE \_\_\_\_\_  
 SIGNED \_\_\_\_\_

EXIST FENCE  
PUMPSTEN?



**GENERAL NOTES**

1. NO SEATING OUTSIDE ON DECKS.
2. HVAC SUBMITTED SEPARATELY.
3. MAX. CAPACITY = 49 (SEE SHEET # 6)

**SUBMITTAL NOTES**

- NOTES:
- # ALL LANDSCAPING EXISTING NOT AFFECTED BY SUBMITTAL
  - # MAIN PATTERNS INDICATED BY ARROW NO CHANGES REQ'D BY THIS SUBMITTAL
  - # NO UTILITIES AFFECTED BY THIS SUBMITTAL

*[Signature]*  
 ARCHITECT  
 REVISION OCT 10, 2014  
 ACE HARDWARE

**LINVILLE ARCHITECTS, LLC**  
 408 E. WILSON ST. MADISON, WI 53703 608-281-6866

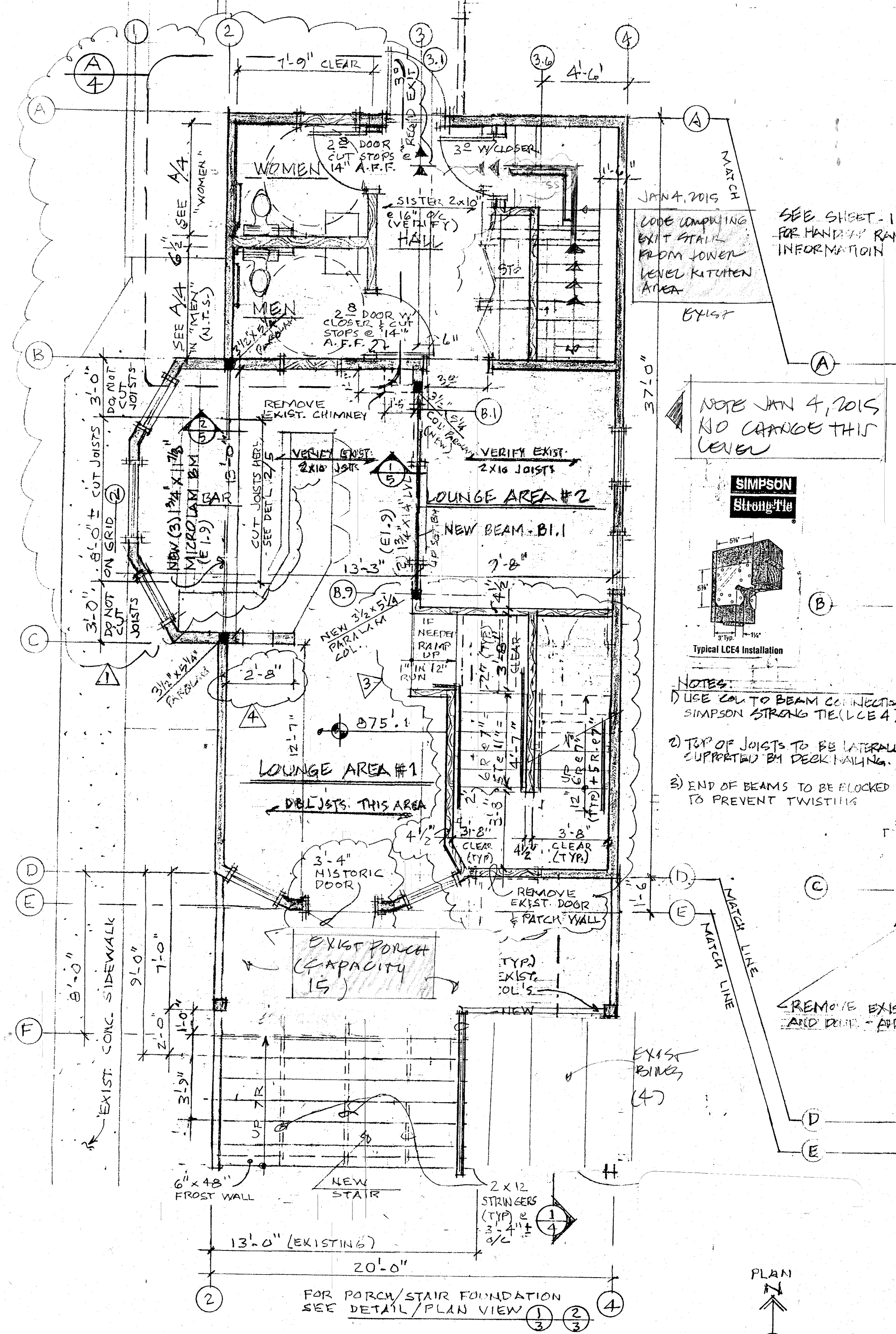
THIS DOCUMENT, THE IDEAS AND DESIGNS INCORPORATED HEREIN AS AN INSTRUMENT OF SERVICE IS THE PROPERTY OF LINVILLE ARCHITECTS, LLC AND IS NOT TO BE COPIED, DISTRIBUTED OR USED IN WHOLE OR PART WITHOUT THE EXPRESSED WRITTEN AUTHORIZATION OF LINVILLE ARCHITECTS, LLC. LINVILLE ARCHITECTS, LLC RESERVES ALL COMMON LAW, STATUTORY, AND OTHER RESERVED RIGHTS INCLUDING THE COPYRIGHT THEREIN.  
 LINVILLE ARCHITECTS, LLC  
 ANY VIOLATION OF THESE RIGHTS WILL BE PROSECUTED.

**REVISION DATES**

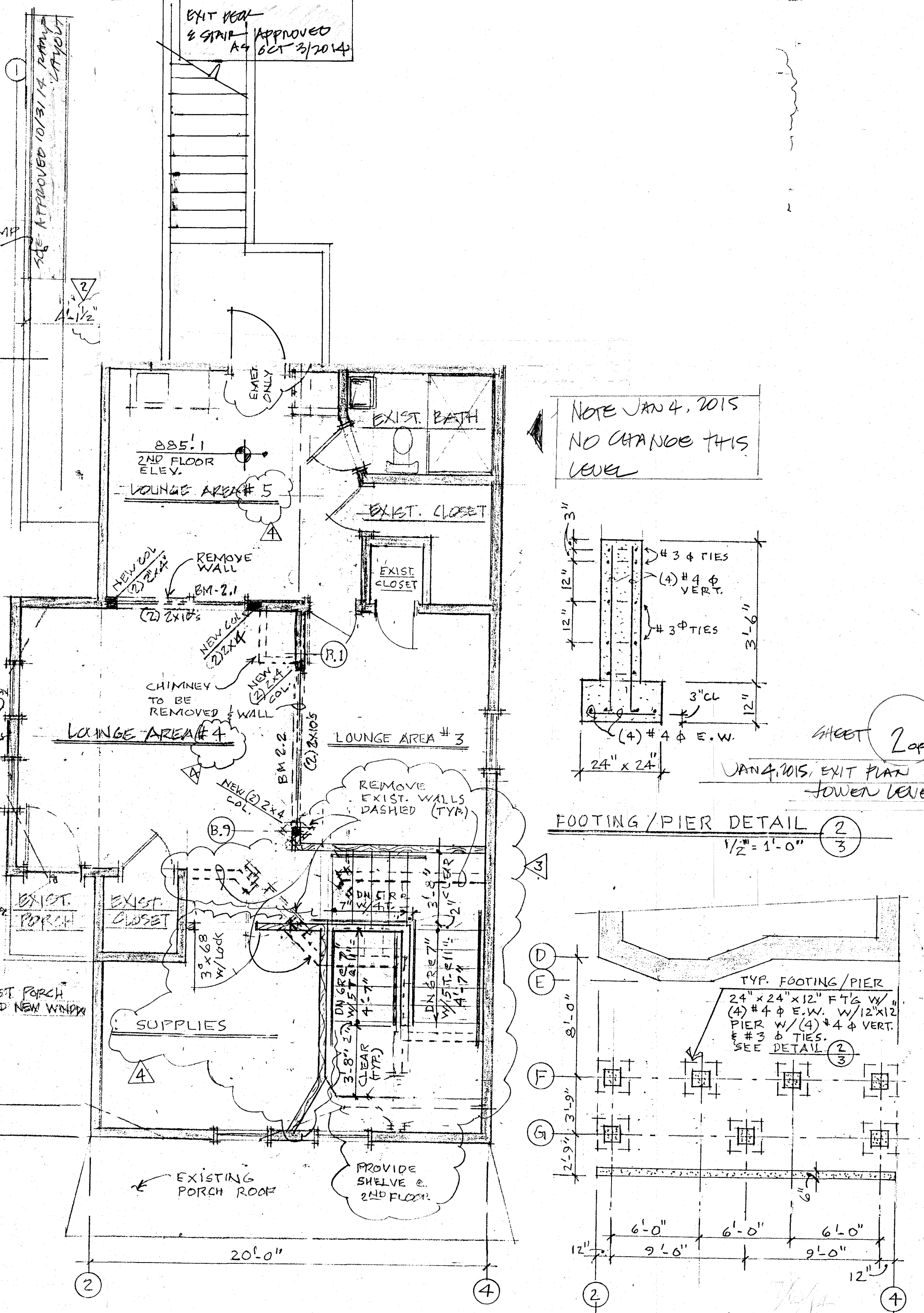
- ▲
- ▲
- ▲

JULY 10 2014

- ▲ AUG 10 TAKE RACKS
- ▲ OCT 10 (6 BIKE RACKS) RAMP REVISION



1ST FLOOR PLAN (SHOWING REMODELING  
1/4" = 1'-0" & 2ND FLOOR FRAMING)

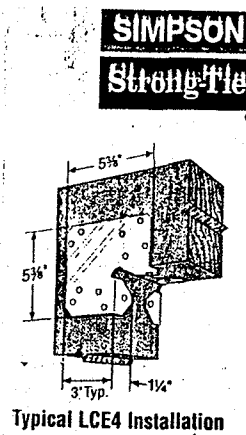


2ND FLOOR PLAN (SHOWING WALLS TO BE REMOVED  
1/4" = 1'-0" & NEW CEILING BEAMS INSTALLED)

JAN 4, 2015  
CODE COMPLIANT  
EXIT STAIRS  
FROM LOWER  
LEVEL KITCHEN  
AREA  
EXIST

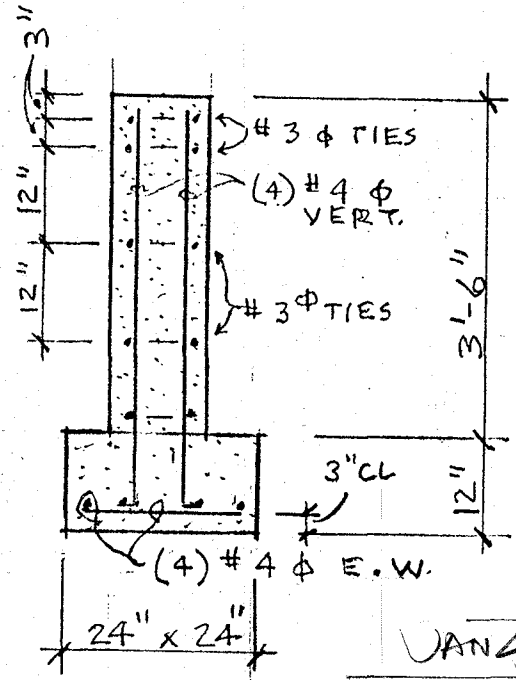
SEE SHEET - 1  
FOR HANDICAP RAMP  
INFORMATION

NOTE JAN 4, 2015  
NO CHANGE THIS  
LEVEL

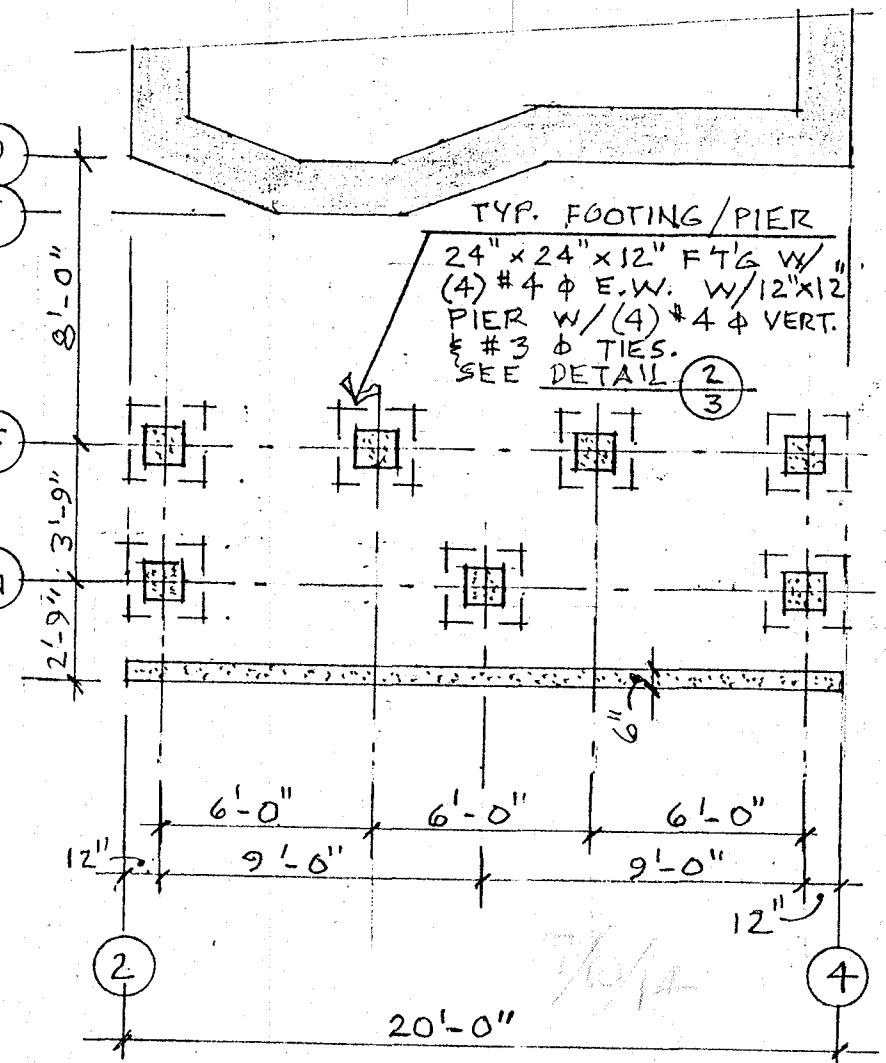


- NOTES:  
1) USE COL TO BEAM CONNECTION  
SIMPSON STRONG TIE (LCE 4)  
2) TOP OF JOISTS TO BE LATERALLY  
SUPPORTED BY DECK WALKING.  
3) END OF BEAMS TO BE FLOCKED  
TO PREVENT TWISTING

NOTE JAN 4, 2015  
NO CHANGE THIS  
LEVEL



FOOTING / PIER DETAIL 2  
1/2" = 1'-0" 3



1 FOUNDATION & PORCH  
3 3/16" = 1'-0"

6162 FLOOR PLAN EXIST. CONDITION  
NO CHANGES READ FOR THIS  
SUS MITTAL

SHEET 2 of 3

JAN 4, 2015, EXIT PLAN FROM  
LOWER LEVEL

EXIT REAR  
& STAIR  
Approved  
OCT 3/2014