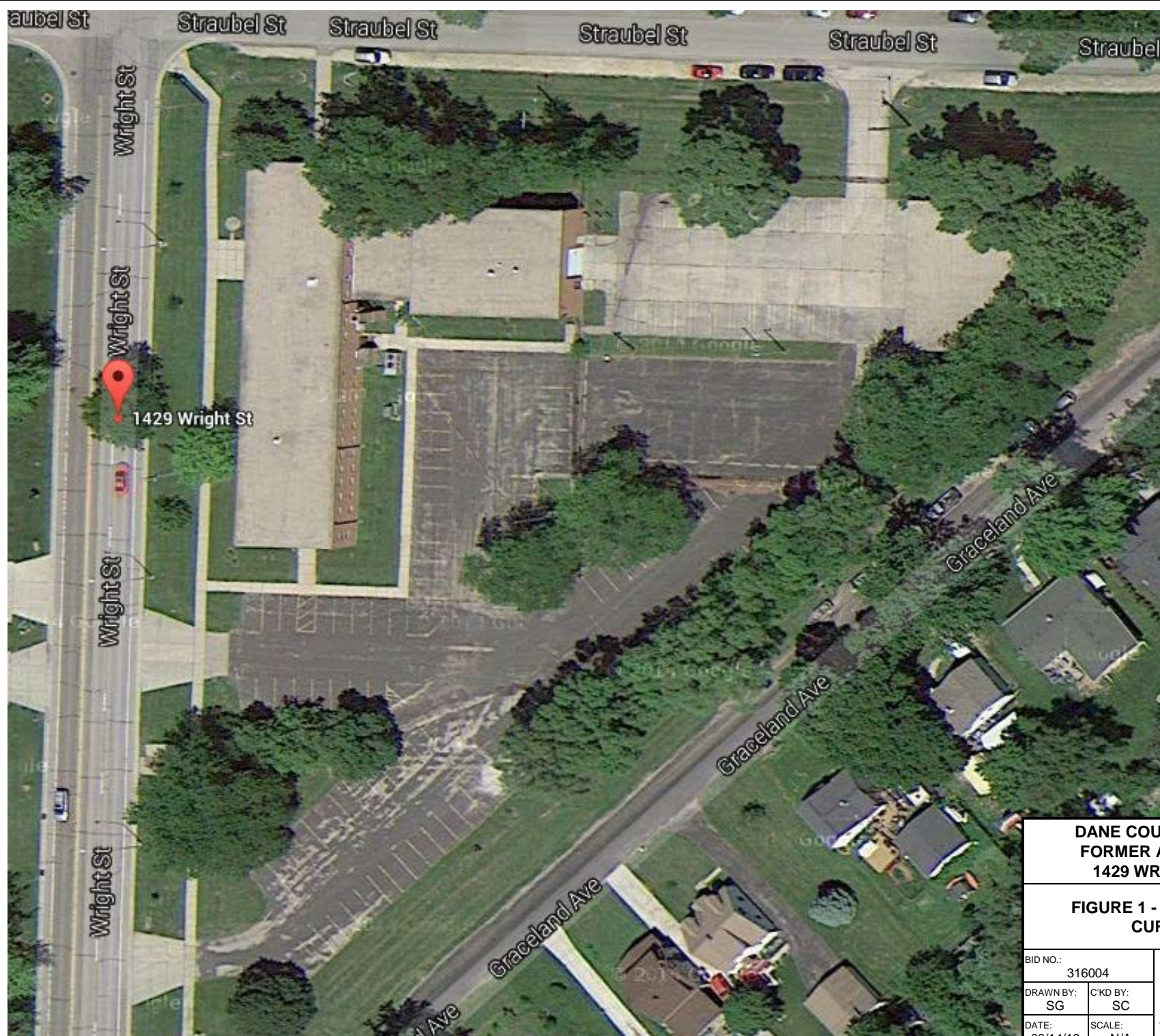


S:\PublicWorks\Shared\ENGINEERING DIVISION\Scott Carlson\316004 - Army Reserve Bldg Demo\04 - Administration\Site Plans for City



**DANE COUNTY REGIONAL AIRPORT
FORMER ARMY RESERVE CENTER
1429 WRIGHT ST., MADISON, WI**

**FIGURE 1 - AERIAL VIEW / SITE PLAN
CURRENT CONDITION**

BID NO.: 316004
DRAWN BY: SG C'KD BY: SC
DATE: 03/14/16 SCALE: N/A


**DANE COUNTY
PUBLIC WORKS,
HIGHWAY &
TRANSPORTATION**

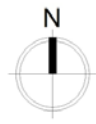


S:\PubWork\Shared\ENGINEERING DIVISION\Scott Carlson\316004 - Army Reserve Bldg Demo\04 - Administration\Site Plans for City



KEY

 Concrete parking barriers located at each driveway apron



**DANE COUNTY REGIONAL AIRPORT
FORMER ARMY RESERVE CENTER
1429 WRIGHT ST., MADISON, WI**

**FIGURE 2 - AERIAL VIEW / SITE PLAN
PLANNED FUTURE CONDITION**

BID NO.: 316004
 DRAWN BY: SG C'KD BY: SC
 DATE: 03/14/16 SCALE: N/A

**DANE COUNTY
PUBLIC WORKS,
HIGHWAY &
TRANSPORTATION**

