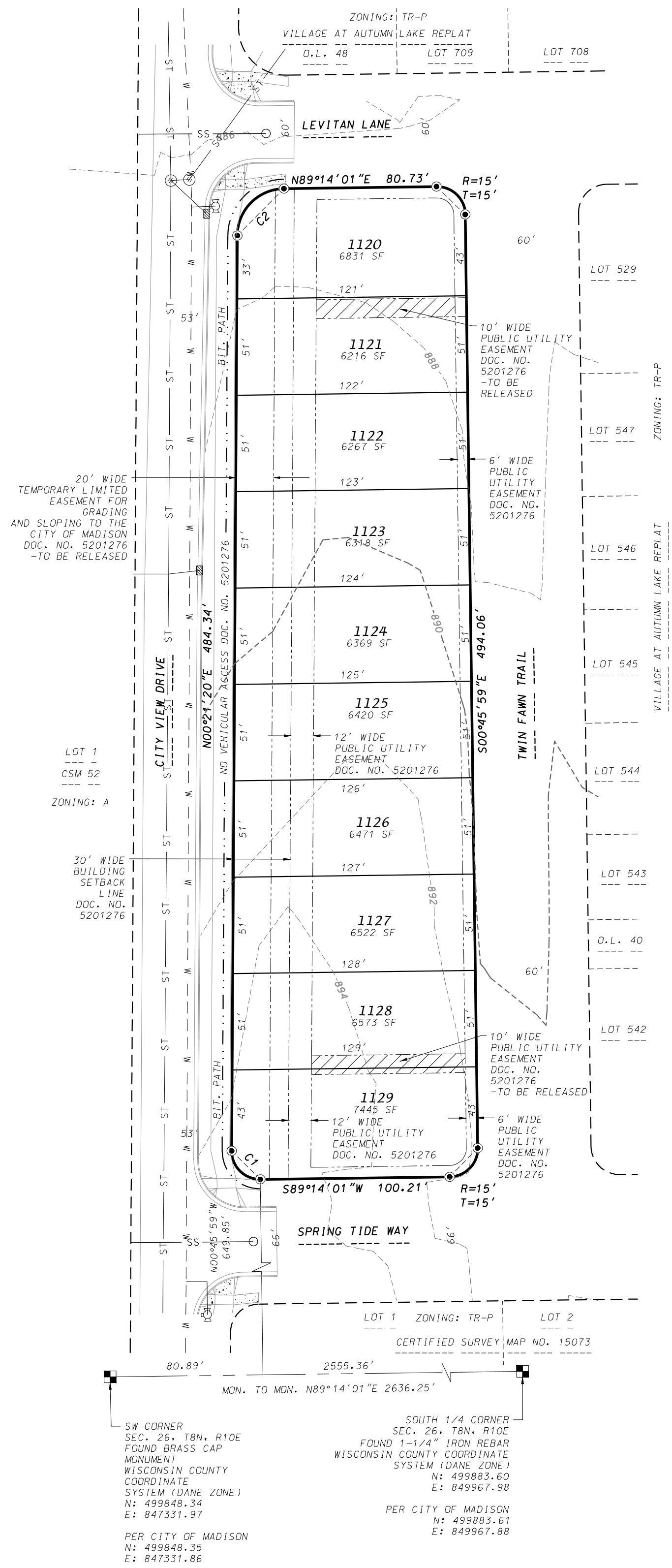


VILLAGE AT AUTUMN LAKE REPLAT NO. 4

LOTS 521-528, VILLAGE AT AUTUMN LAKE REPLAT
 LOCATED IN THE SW1/4 OF THE SW1/4 OF SECTION 26, T8N, R10E
 CITY OF MADISON, DANE COUNTY, WISCONSIN



NOTES

- Zoning: Existing - TR-P
Proposed - TR-P
- Owner and Subdivider:
Val, LLC
6801 South Towne Drive
Madison, WI 53713
Engineer and Surveyor:
D'Onofrio Kottke & Assoc.
7530 Westward Way
Madison, WI 53717
Planner:
Vandewalle & Assoc.
120 E. Lakeside Street
Madison, WI 53715

SURVEYOR'S CERTIFICATE

I, Brett T. Stoffregan, Registered Land Surveyor, S-2742, hereby certify that this preliminary plat is a true and correct representation of all the adjacent existing land divisions and of the boundary of the preliminary plat and features and that I have fully complied with the City of Madison Subdivision Ordinance.

Dated this 4th day of December, 2019.

Brett T. Stoffregan
 Brett T. Stoffregan, Professional Land Surveyor, S-2742



LEGAL DESCRIPTION

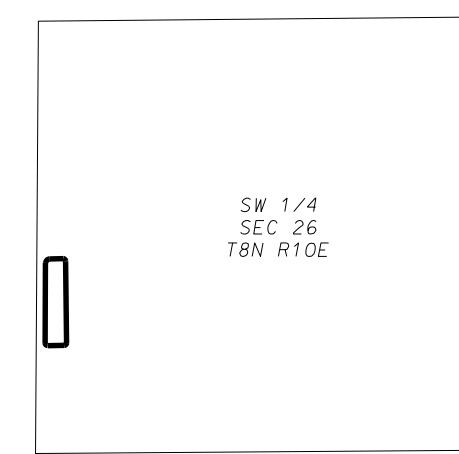
Lots 521 through 528, Village at Autumn Lake Replat, recorded in Volume 60-045A of Plats on pages 230-249 as Document Number 5201276, Dane County Registry, located in the SW1/4 of the SW1/4 of Section 26, T8N, R10E, City of Madison, Dane County, Wisconsin, Containing 129,086 square feet (2.963 acres).

LEGEND

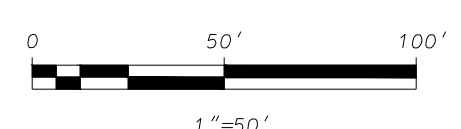
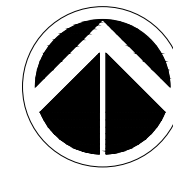
- FOUND 1-1/4" REBAR
- SS SS SANITARY SEWER
- W W WATER MAIN
- ST ST STORM SEWER
- MANHOLE
- ⊗ CATCH BASIN/INLET
- ⊙ VALVE
- ⊕ HYDRANT
- ☐ CONCRETE
- ▬ CONCRETE CURB AND GUTTER
- - - - - EXISTING CONTOUR

CURVE TABLE

CURVE NUMBER	RADIUS (FEET)	CHORD (FEET)	ARC (FEET)	CHORD BEARING	CENTRAL ANGLE
1	15.00	21.42	23.86	N45°12'19.5"W	91°07'19"
2	25.00	35.01	38.78	N44°47'40.5"E	88°52'41"



LEIN ROAD
 LOCATION MAP
 NOT TO SCALE



BEARINGS REFERENCED TO THE SOUTH LINE
 SW1/4 OF SECTION 26, T8N, R10E
 WISCONSIN COUNTY COORDINATE SYSTEM (DANE ZONE)
 BEARING N89°14'01"E

D'ONOFRIO KOTTKE AND ASSOCIATES, INC.
 7530 Westward Way, Madison, WI 53717
 Phone: 608.833.7530 • Fax: 608.833.1089
 YOUR NATURAL RESOURCE FOR LAND DEVELOPMENT

FN:19-07-115