



State Street Pedestrian Mall Experiment 2024

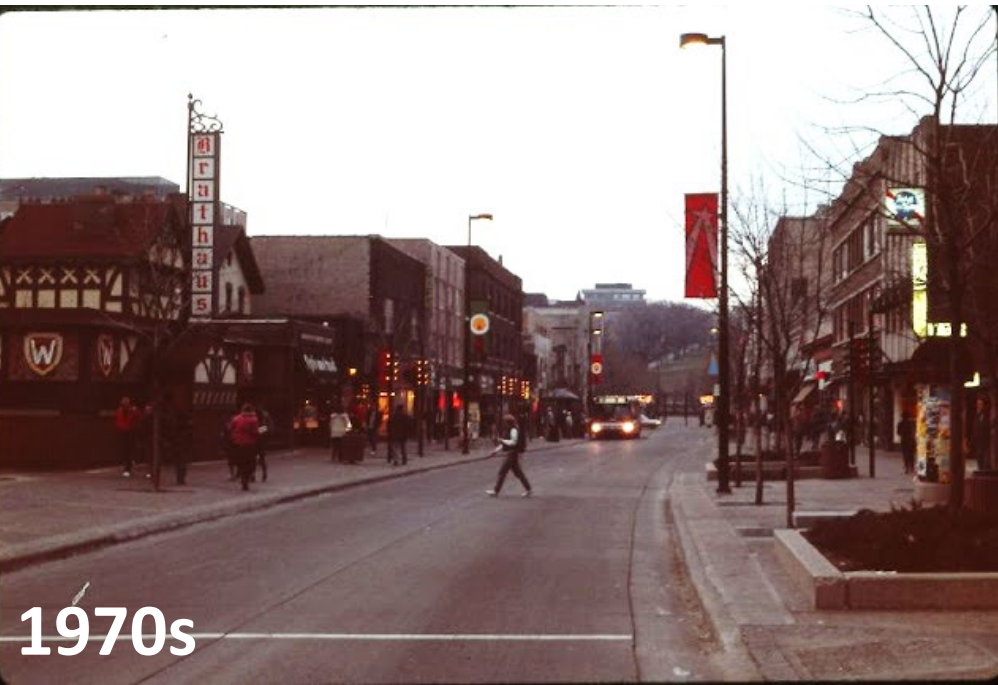
Draft Concepts

December 4, 2023

State Street - History



1960s



1970s

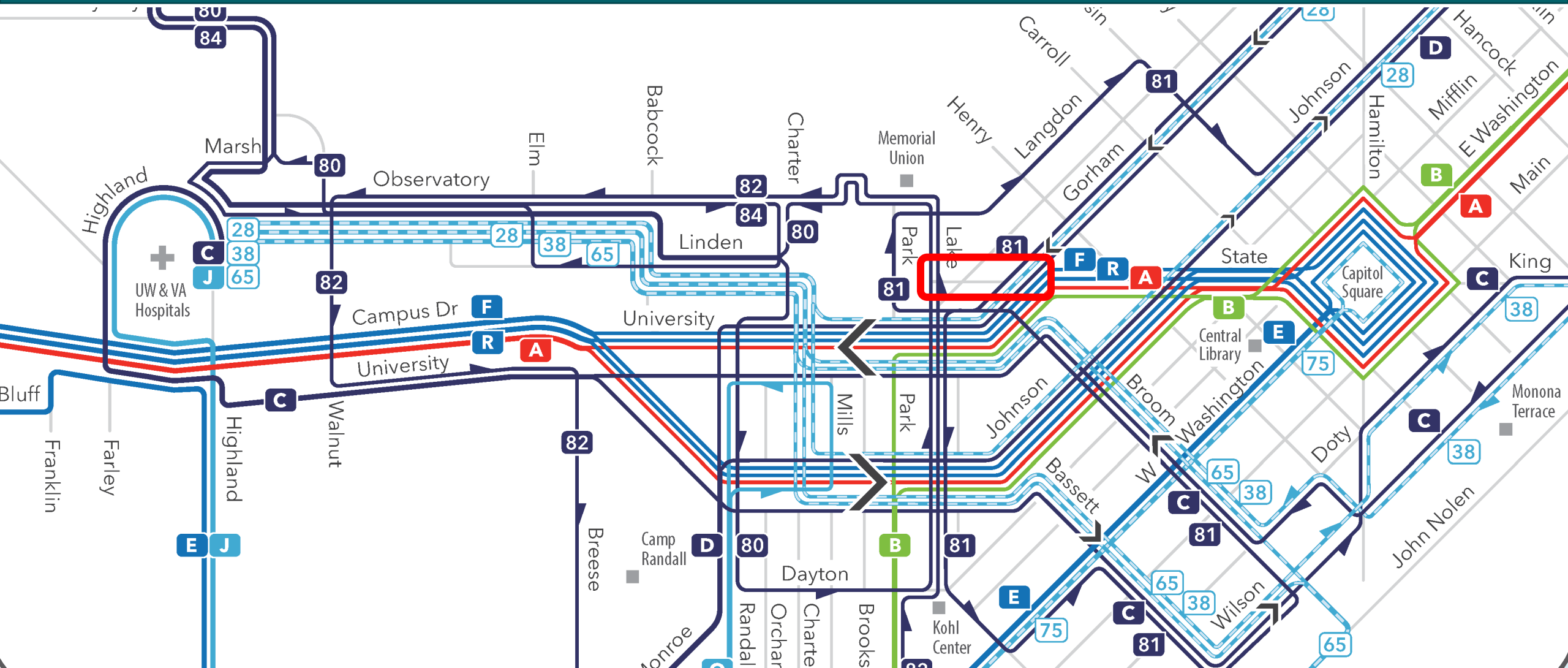


2010s

2020 Weekend Closure



2023 Metro Transit Network Redesign



Downtown Coordinating Committee: Discussions

- Streets and Mall Concourse Maintenance
- Traffic Engineering
- Street Vending
- Police & Fire
- Disability Coordinator & Metro Paratransit
- Engineering
- BID and GSSBA
- Neighborhood associations
- State Street Survey

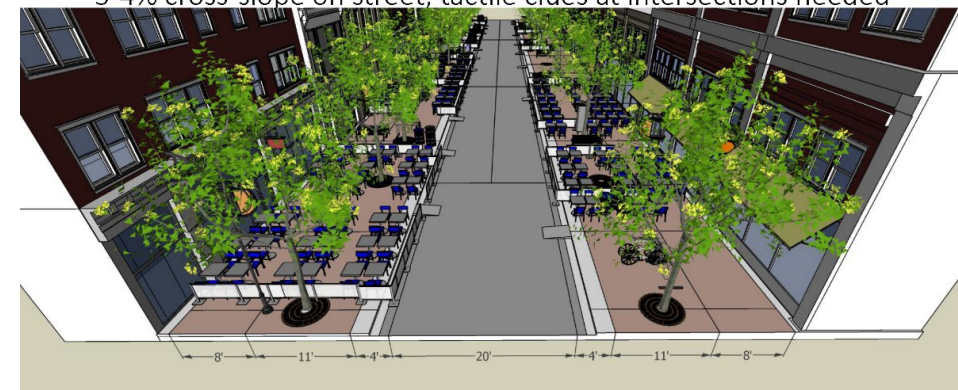
Idea 1:

Extend cafes $2' + 2' = 4'$ over curb/street, keep sidewalk
This maintains tactile clues at intersections, 2% cross-slope on sidewalk,



Idea 2: All pedestrians and bikes in street

Ramping of some type needed – difficult due to drainage,
structural slab, tripping hazards
3-4% cross-slope on street, tactile clues at intersections needed



Key Lessons:

- No changes to street/curbs
- Emergency access and fire lanes critical
- City operations: refuse, snow, forestry, etc.



Key Lessons:

- Bikes and pedestrians
- Accessibility



Key Lessons:

- Business deliveries and building service
- Residents moving



August 2023 – Resolution and Approval



[News](#) [Opinion](#) [Food & Drink](#) [Entertainment](#) [Sports](#) [Events](#) [Philanthropy](#) [About Us](#) [Madison.com](#) [WiscNews](#)



State Street blocks to become pedestrian mall in 2024 experiment

By Allison Garfield

Sep 6, 2023



Support Local Journalism

Become a Cap Times member today and enjoy great benefits.



[Join Today](#)

Questions? [View our FAQ page](#)

Extent of State Street Experiment



Existing Conditions





Selfie station or photo frame

- Incorporate hashtag to create social media presence

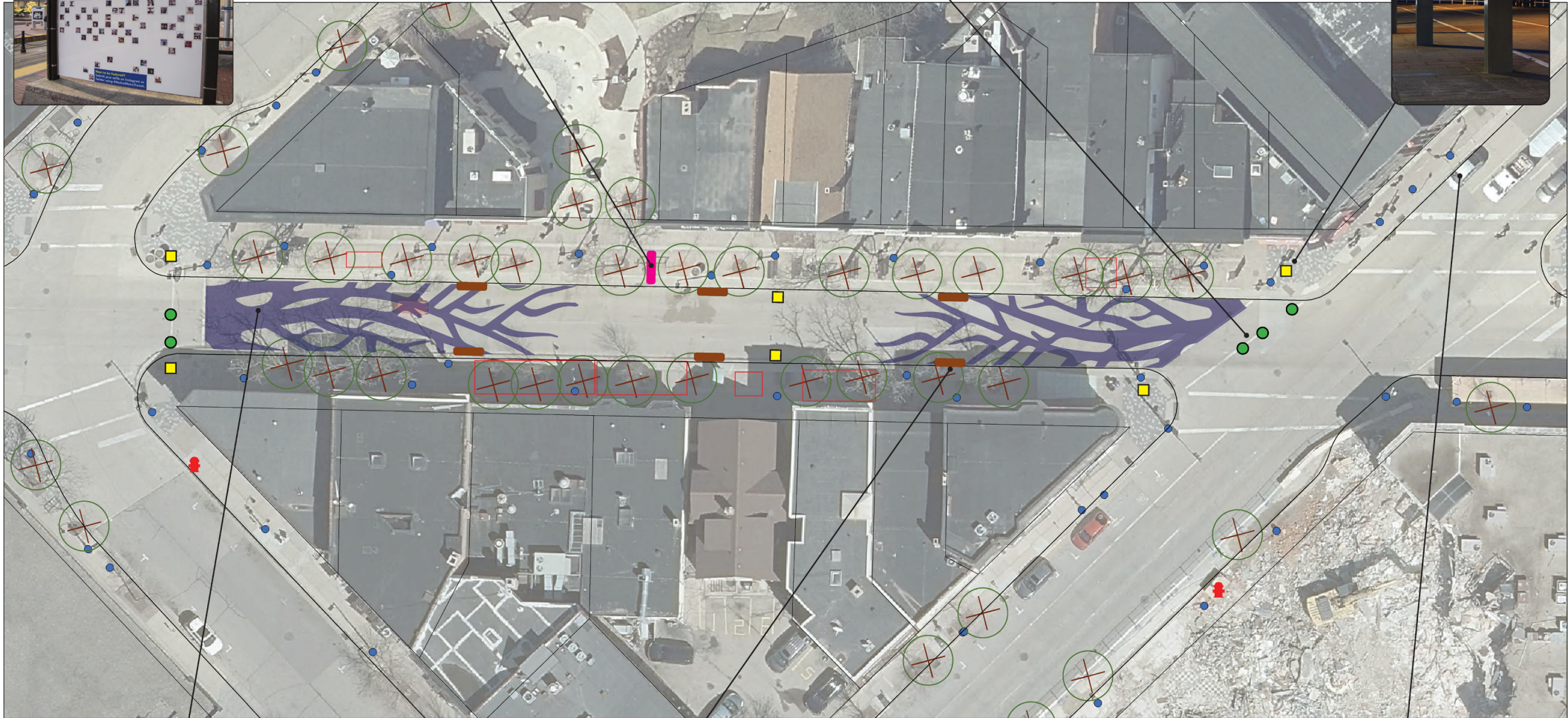


Planters on inbound lanes

- More attractive and than wooden barricades
- No ongoing staff time requirement to control access
- Allows cyclists normal access in direction

Gateway placemaking elements

- Creates visual distinction for pedestrian blocks
- Illumination attracts attention to area



Street Painting

- Roots shown as sample
- Adds interest and conveys change in character of street

Benches at curb, facing into street

- Encourages street be used as public space
- Visual reminder to drive slowly
- Stays out of fire lane

Loading zones at cross street

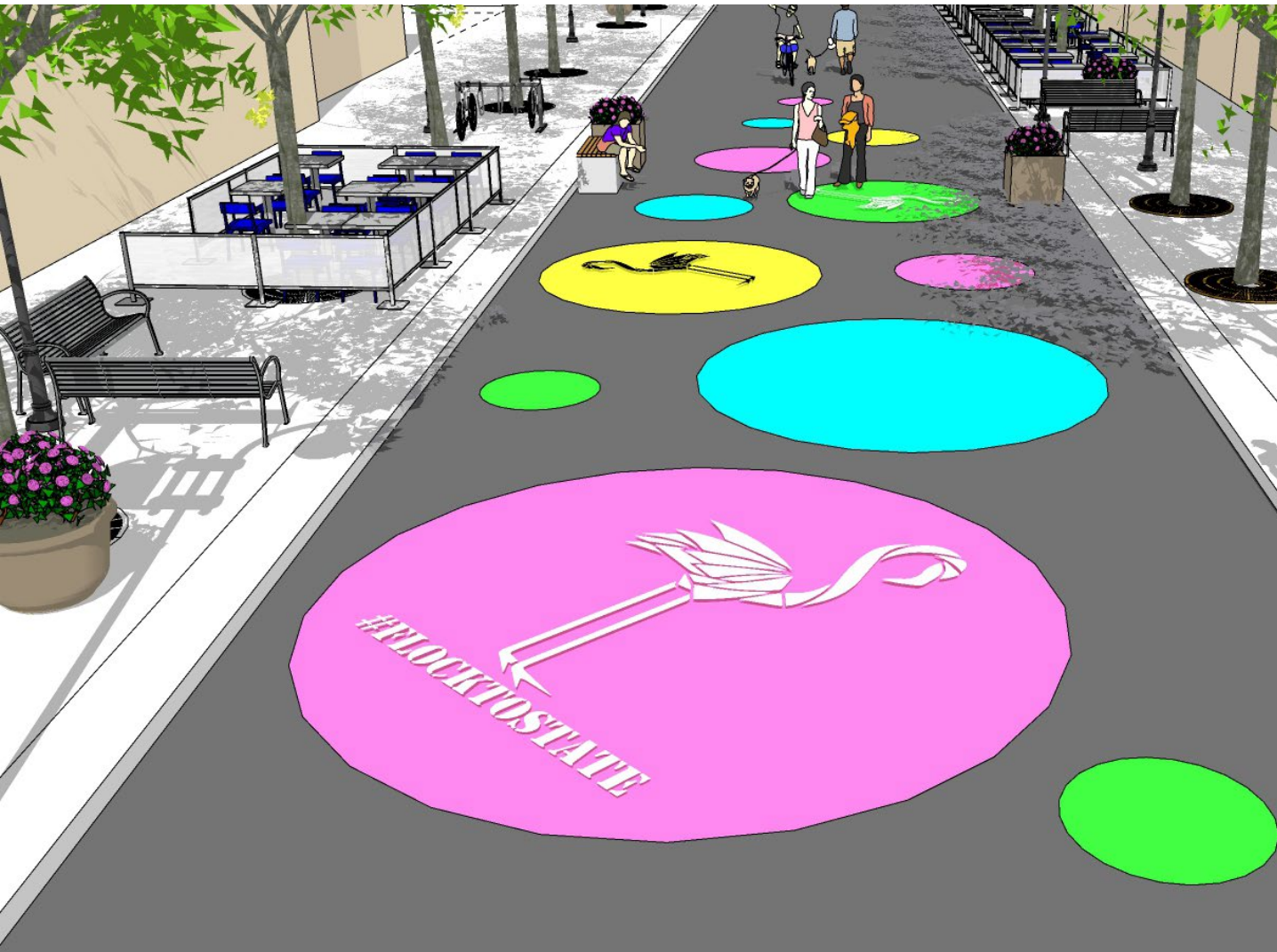


#FlocktoSTATE



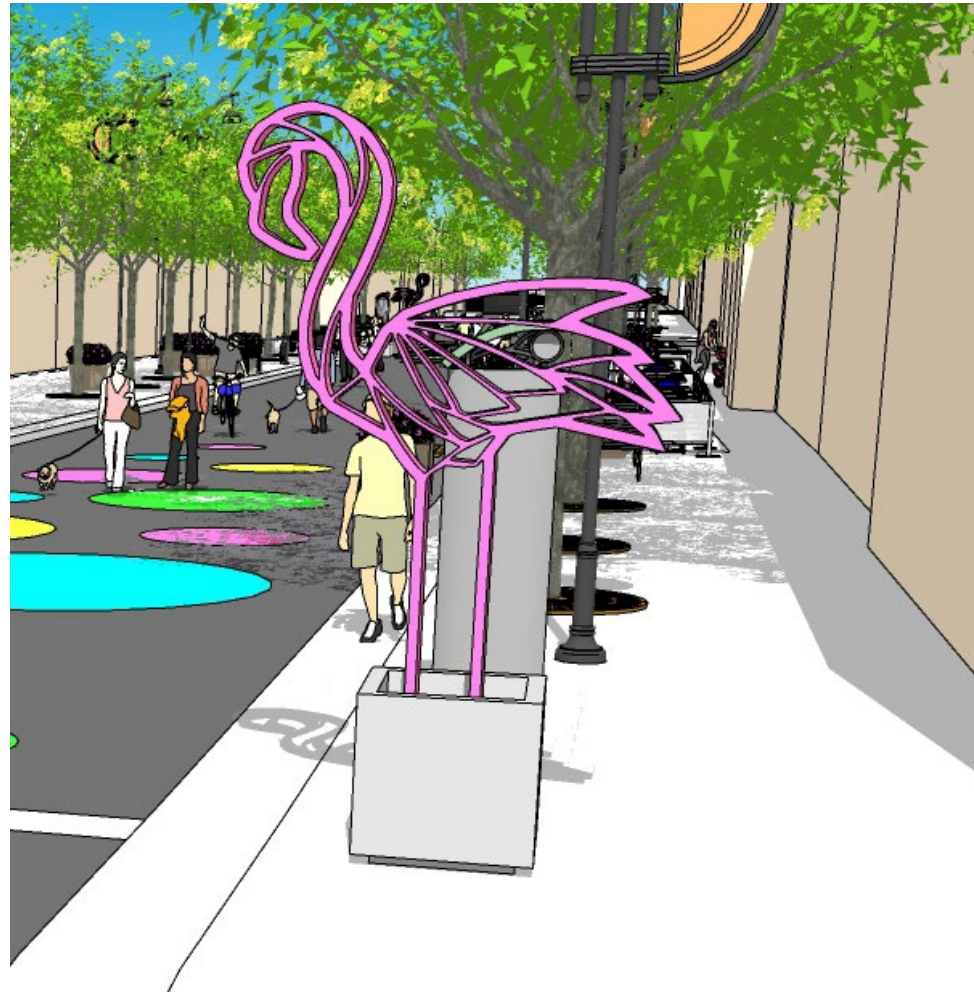


Public Art Opportunities



Public Art Opportunities

- Gateway elements



Public Art Opportunities

- Busking/Music Stations
- Easy permit sign –up for spots
- Determine best hours of operation
- Other?



Activation & Events

- City doesn't have capacity to create/manage events
- Rely on community partners, but space will be available



Closure?

- Open to bikes and pedestrians!
- Closed to vehicles except:
Emergency vehicles
Paratransit
- Loading zones on cross streets



When?

- Existing delivery prohibition: 11:30-1:30
 - All options will have delivery windows!
 - Allowances for atypical situations
-
- Potential Options:
 - Weekends only
 - Weekends + Weekdays after 11:30 am
 - Weekends + Weekdays after 4 or 5 pm
 - Weekends + certain days (i.e. Thursdays)
 - Other?



Measuring Outcomes

- Report results to Common Council
- Surveys:
Business, resident and visitor
- Anonymized cell phone data



Next Steps

- Additional input meetings
- Revise and finalize design features
- Determine “Hours of Operation”
- Approval by Common Council
- Order furniture and equipment
- Coordinate with artists
- Goal: open by graduation weekend

Questions – your input

- What excites you about this?
- Do you have concerns?
- Do you have ideas for activation / partnerships?
- What does success look like?
- Thoughts on delivery windows / closure hours



<https://www.surveymonkey.com/r/flocktostate>





#FLOCKTOSTATE

Contact:

Dan McAuliffe

dmcauliffe@cityofmadison.com

608-261-9676