

SITE INFORMATION

SITE ACCESS 2439 ATWOOD AVE
 SITE ACREAGE .37

Number of buildings above grade: 2
 Type of construction: 3B
 Total sq ftg of building: 4832 SF

Use of Property: Mixed use restaurant & residential

Gross sq ft of restaurant: 4832 SF
 Gross sq ft of dwelling units: 4832 SF

Capacity:
 5 residential units
 Next Door Brewing: 100 persons

Number of bicycle stalls shown: 12
 5 for dwelling and 5 for restaurant required.

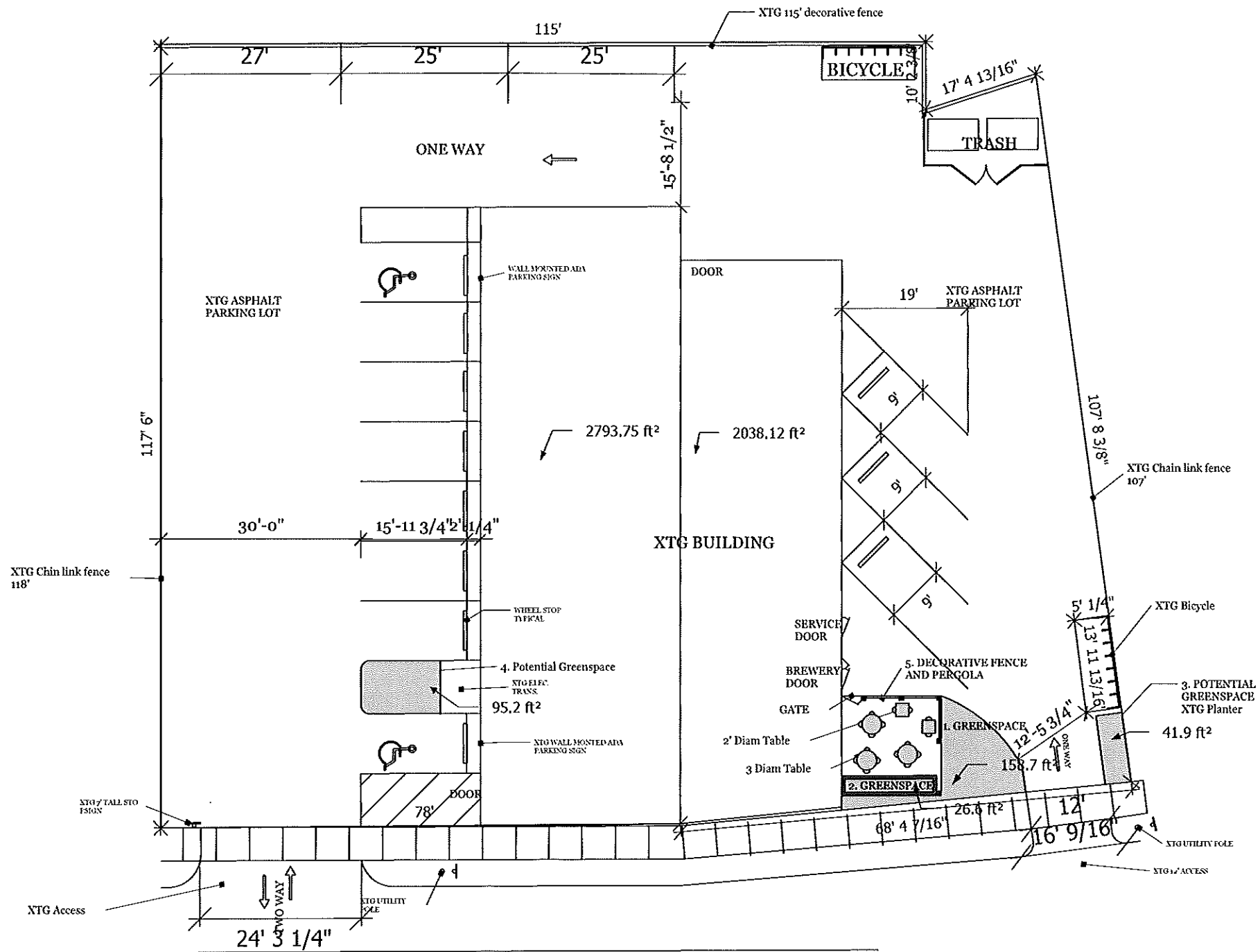
Required Parking Counts:
 Restaurant: 15 (15% of capacity)
 Dwelling: 0 stalls

	Shown	Required
Small Car	0	
Large Car	12	15
Accessible	2	2
Total	14	

Outdoor Seating: Plan shows proposed addition of outdoor seating area enclosed by decorative fence and pergola. Dimensions of enclosed area approximately 15'x15'.

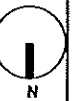
Greenspace:
 1. Add Block/brick/timber planter. 3'x14.5'. 26.6SF plantable.
 2. Add 158.7SF Greenspace.
 3. Existing planter. 41.9 SF
 4. Potential greenspace location. 95 SF
 5. Outdoor seating area enclosed by decorative fence. Approx 23' of fence 8' tall and another 7' of fence that is 3-4' tall.

Notes: Reduction allowed for parking stalls less than 5 stalls per 28.I-4.



ATWOOD AVENUE

0 Outdoor Seating Plan
 A00 Scale: 1"=20'



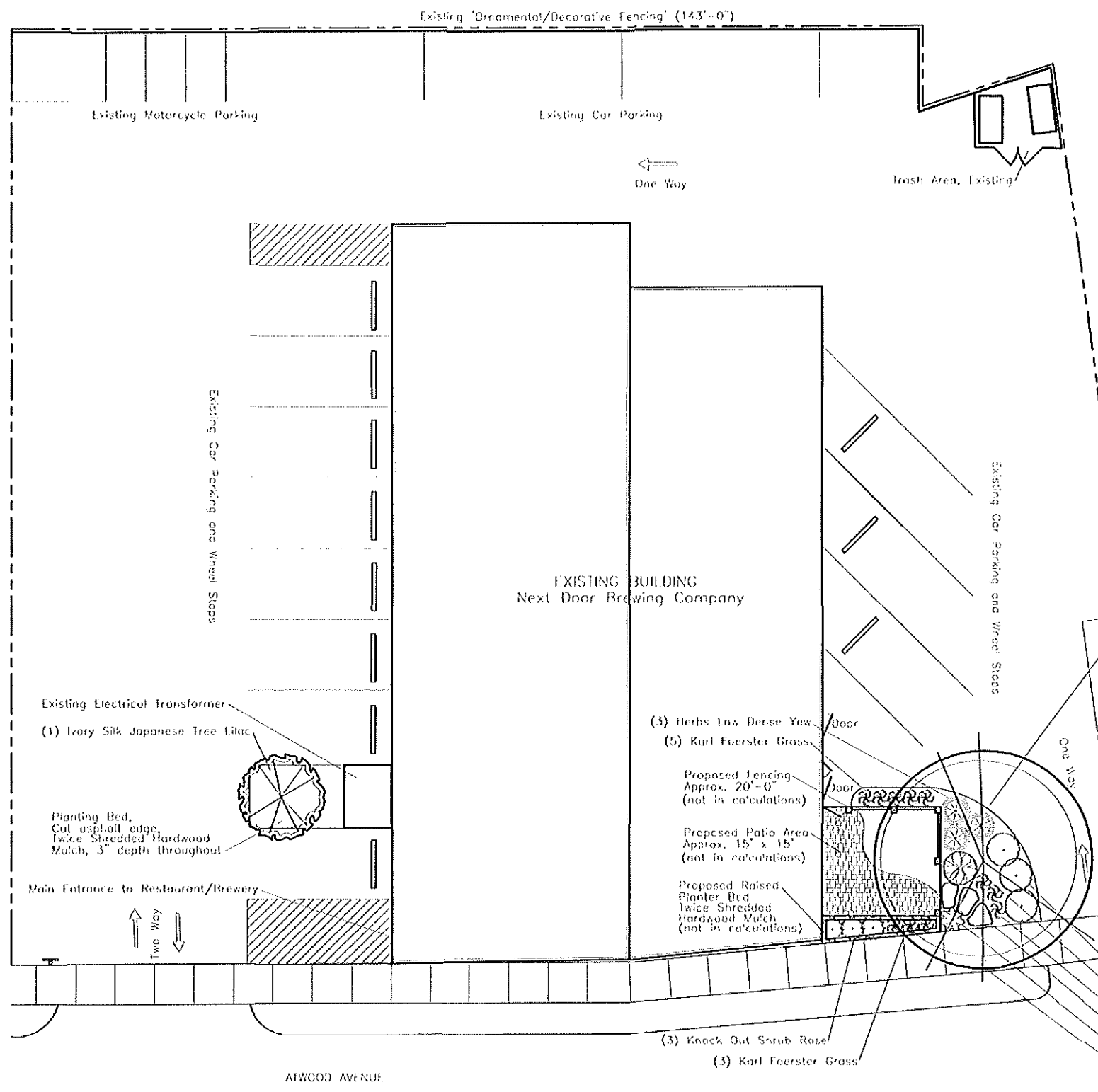
NEXT DOOR BREWING COMPANY
 2439 ATWOOD AVENUE
 MADISON, WI



NEXT DOOR BREWING: OUTDOOR SEATING

REVISIONS

MM/DD/YY	REMARKS
1	
2	
3	
4	
5	



PLANT LIST - NEXT DOOR BREWING COMPANY

Key	Common Name	Botanical Name	QTY.	Size	Appl. Cond.	Landscape Points (Each)	Total Landscape Points
Overstory Deciduous Tree							
	New Horizon Elm	Ulmus x 'New Horizon'	1	2'	B&B	35	35
Ornamental Tree							
	Ivory Silk Japanese Tree Lilac	Syringa reticulata 'Ivory Silk'	2	1.5'	B&B	15	30
Shrub, Deciduous							
	Grow Low Sumac	Rhus aromatica 'Grow Low'	3	#5 (18"-24")	container	3	9
	Endless Summer Hydrangea	Hydrangea macrophylla 'Endless Summer'	1	#5 (18"-24")	container	3	3
	Knockout Rose	Rosa 'Knockout'	3	#5 (18"-24")	container	3	9
Shrub, Evergreen							
	Herbs Low Dense Yew	Taxus media 'Herbs Low Dense'	3	#5 (18"-24")	container	4	12
Ornamental Grasses							
	Karl Foerster Feather Reed Grass	Calamagrostis acutiflora 'Karl Foerster'	11	#1 (15"-18")	container	2	22
Perennials							
	Russian Sage	Perovskia atriplicifolia	4	#1 (15"-18")	container	2	8
						Landscape Points Achieved	228

Tabulation of Points and Credits

Total square footage of developed area	=	10,000
Developed area divided by 300 square feet	=	34 Landscape Units
Landscape Units multiplied by 5 landscape points	=	170 Total Points Required
Total Landscape Points Achieved (proposed landscape plan)	=	228
Ornamental/Decorative Fencing (existing, 4 pts per 10 linear ft) (143 total feet)	=	57
TOTAL POINTS PROVIDED	=	385

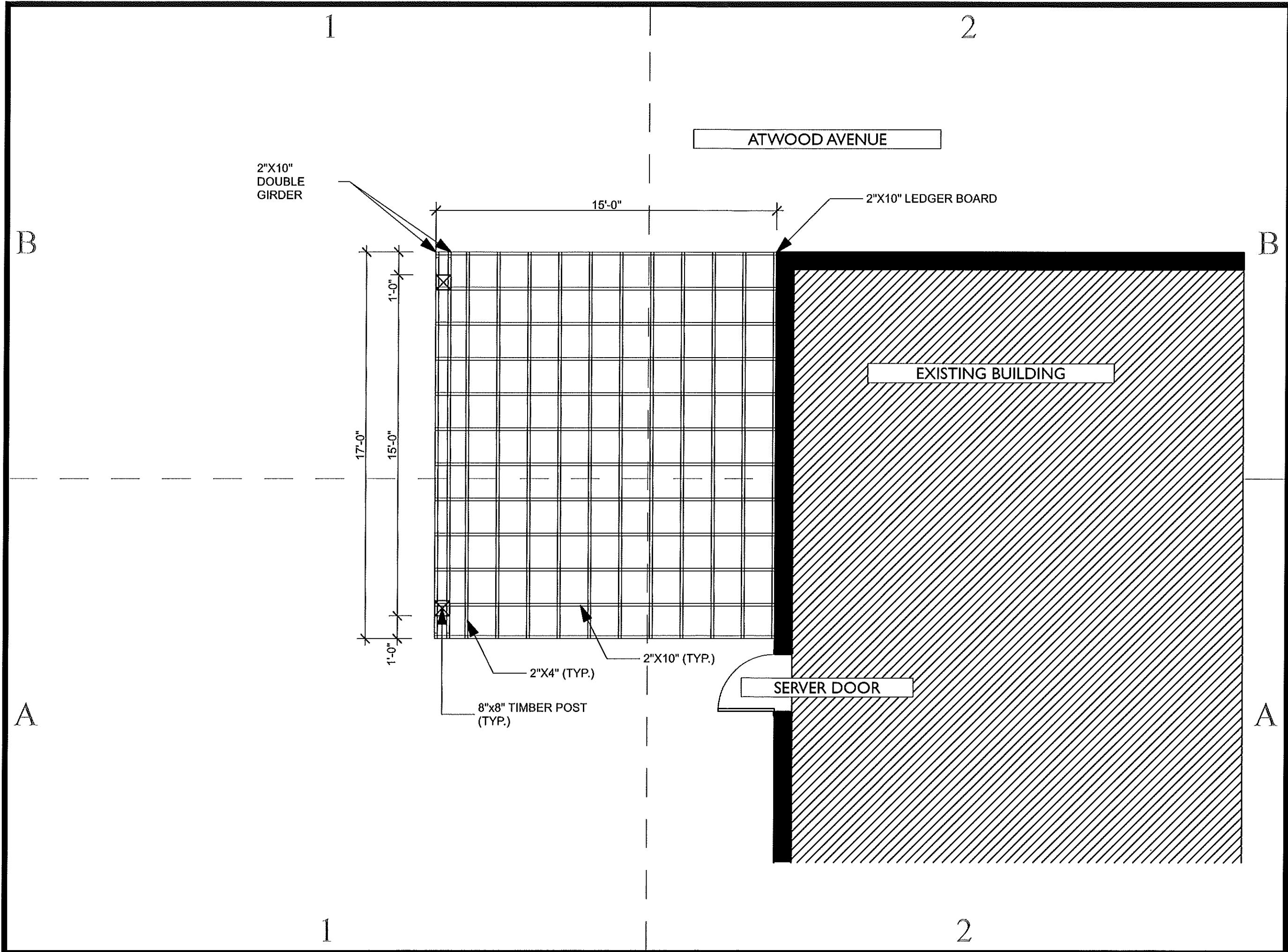
The drawings on this plan are the property of the architect. They are to be used only for the project and site shown. No other use or reproduction is permitted without the written consent of the architect. In addition, the architect assumes no liability for any damage or injury to persons or property caused by the use of these drawings. CALL YOUR LOCAL UTILITY

BLAIR
LAWN & LANDSCAPE, INC.
3030 Gateway Place • Madison, WI 53704
Creative Landscapes Since 1984



LANDSCAPE PLAN
NEXT DOOR BREWING COMPANY - Landscape Plan
2439 Atwood Avenue, Madison, WI 53704

Drawn by: [Signature]
Checked by: [Signature]
Date: February 12, 2016
Scale: 1/8" = 1'-0"
Sheet: [Number]
Next Door Brewing Co.

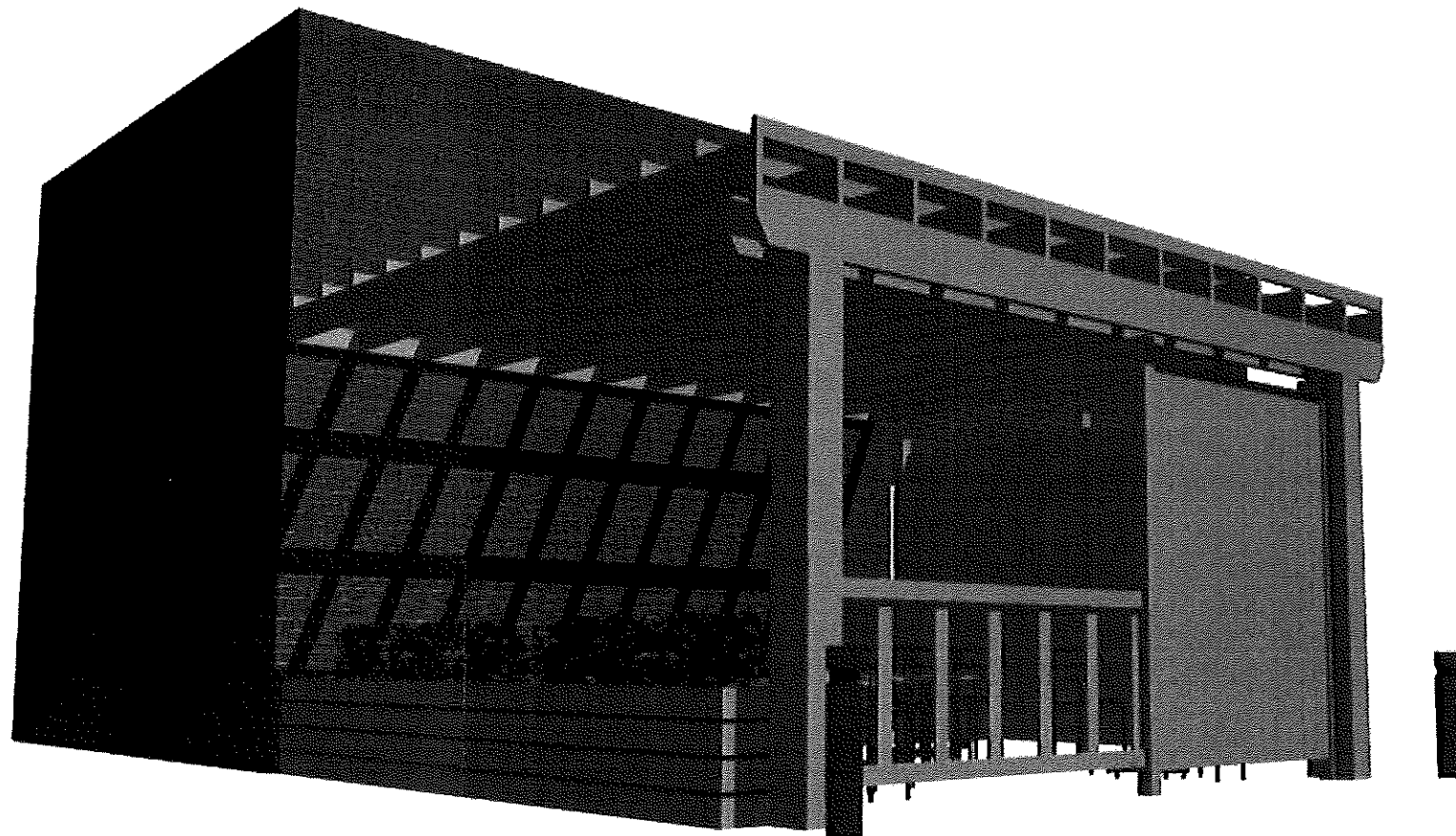
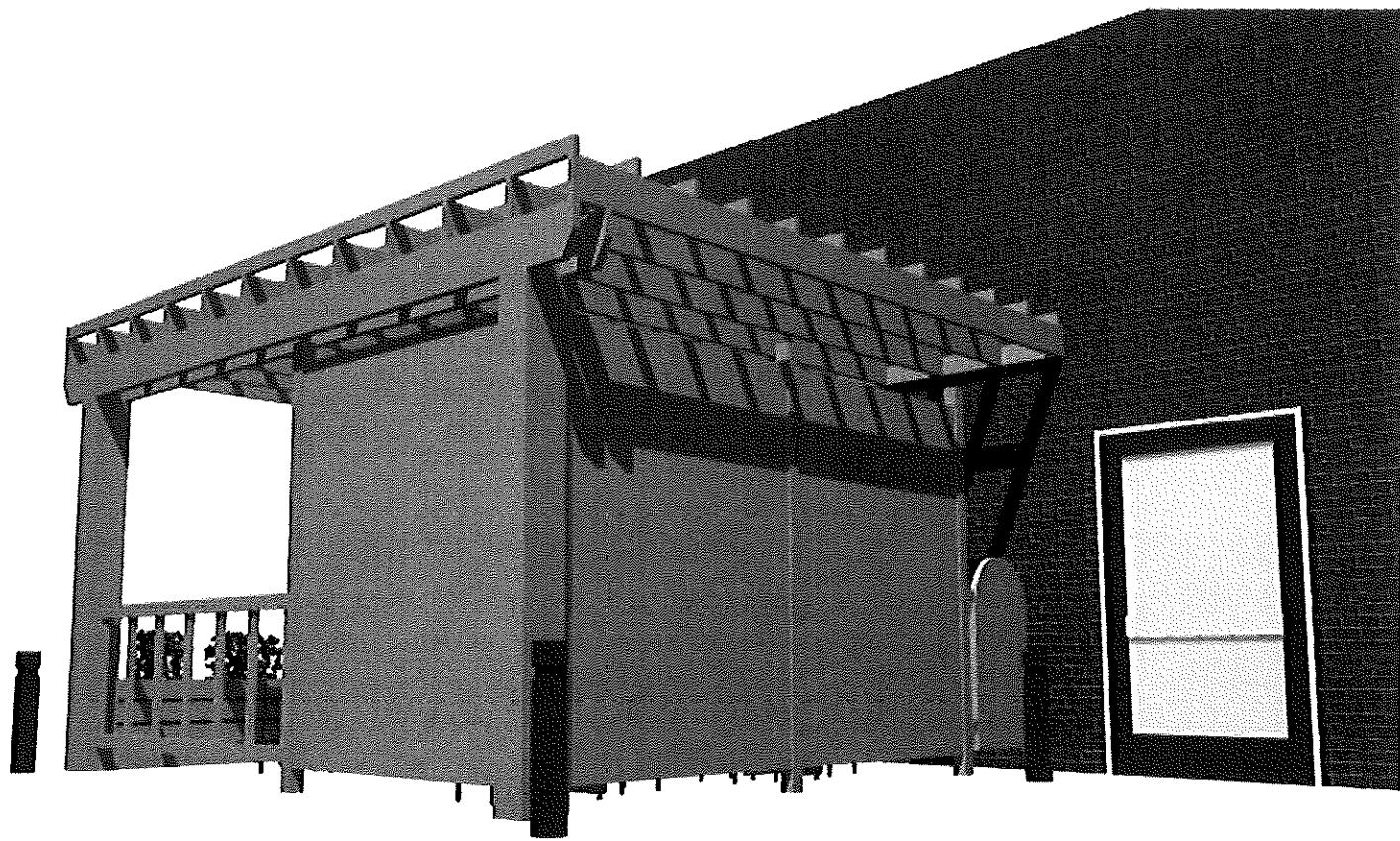


CONSULTANTS

SHEET TITLE

FRAMING
LAYOUT

A-102
SHEET 3 OF 7



CONSULTANTS

--

--

SHEET TITLE

--

PLANT LIST - NEXT DOOR BREWING COMPANY

Key	Common Name	Botanical Name	QTY.	Size	Root Cond.	Landscape Points (Each)	Total Landscape Points
Overstory Deciduous Tree							
	New Horizon Elm	Ulmus x 'New Horizon'	1	2"	B&B	35	35
Ornamental Tree							
	Ivory Silk Japanese Tree Lilac	Syringa reticulata 'Ivory Silk'	2	1.5"	B&B	15	30
Shrub, Deciduous							
	Grow Low Sumac	Rhus aromatica 'Grow Low'	3	#5 (18"-24")	container	3	9
	Endless Summer Hydrangea	Hydrangea macrophylla 'Bailmer'	1	#5 (18"-24")	container	3	3
	Knockout Rose	Rosa 'Knockout'	3	#5 (18"-24")	container	3	9
Shrub, Evergreen							
	Herbs Low Dense Yew	Taxus x media 'Herbs Low Dense'	3	#5 (18"-24")	container	4	12
Ornamental Grasses							
	Karl Foerster Feather Reed Grass	Calamagrostis acutiflora 'Karl Foerster'	11	#1 (15"-18")	container	2	22
Perennials							
	Russian Sage	Perovskia atriplicifolia	4	#1 (15"-18")	container	2	8
						Landscape Points Achieved	128

Tabulation of Points and Credits

Total square footage of developed area	=	10,000
Developed area divided by 300 square feet	=	34 Landscape Units
Landscape Units multiplied by 5 landscape points	=	170 Total Points Required
Total Landscape Points Achieved (proposed landscape plan)	=	128
Ornamental/Decorative Fencing (existing, 4pts per 10 lineal ft) (143 total feet)	=	57
TOTAL POINTS PROVIDED	=	185