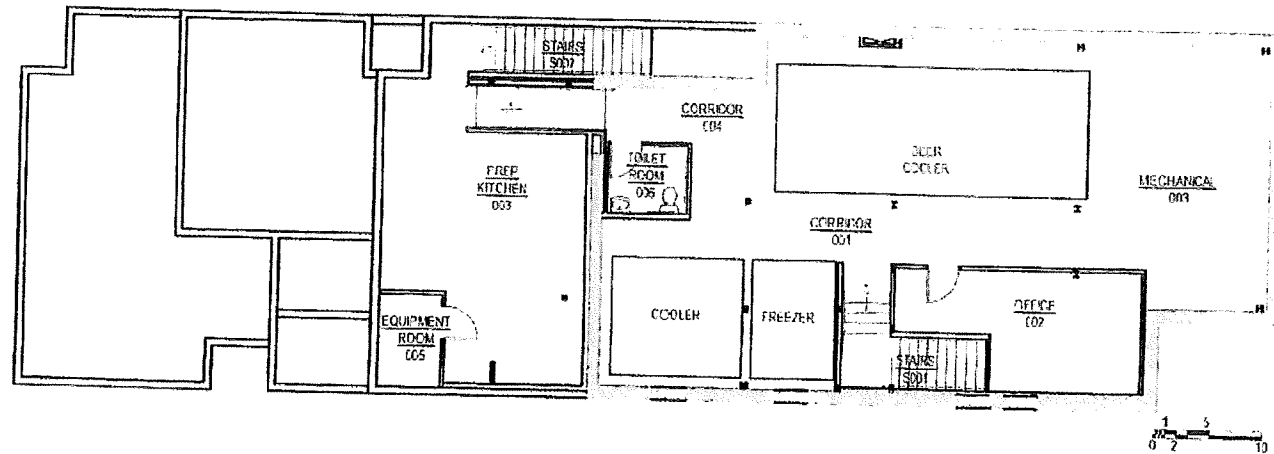


# Normal World Pub

408 WEST GORHAM  
MADISON, WI

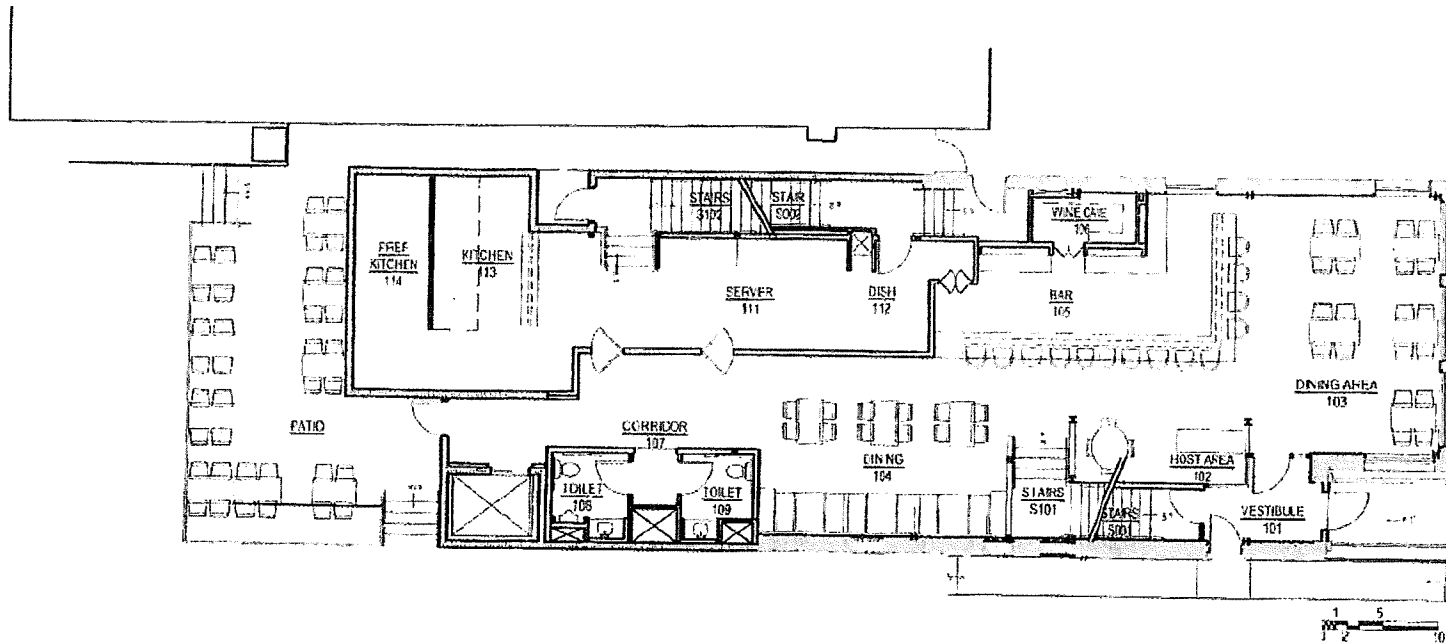


BASEMENT PLAN  
1/16" = 1'-0"

SQUARE FOOTAGE  
BASEMENT = 2,779 SF

# Nomad World Pub

408 WEST GORHAM  
MADISON, WI

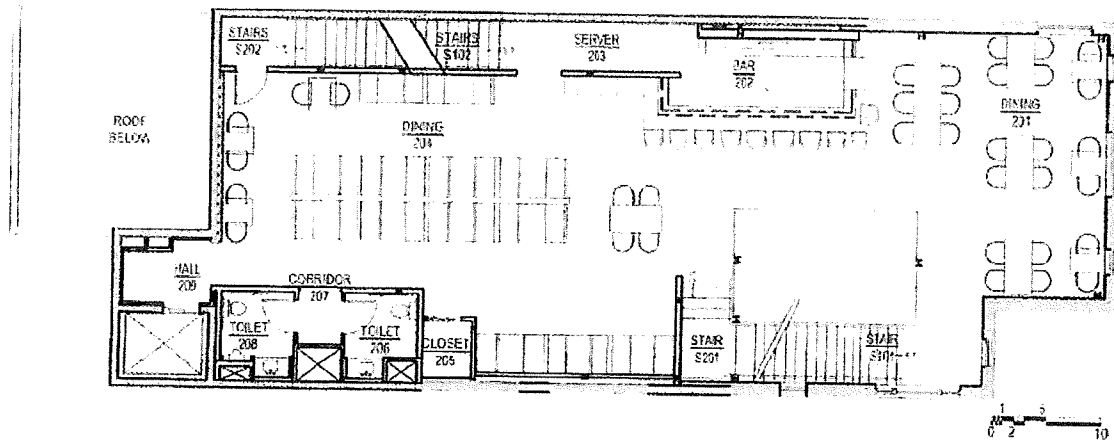


FIRST FLOOR PLAN  
1/16" = 1'-0"

SQUARE FOOTAGE  
FIRST FLOOR = 3,299 SF

# Nomad World Pub

408 WEST GORHAM  
MADISON, WI



SECOND FLOOR PLAN  
1/16" = 1'-0"

SQUARE FOOTAGE  
SECOND FLOOR = 2,926 SF

# NOMAD WORLD PUB

408 WEST GORHAM

MADISON, WI

