

DRIVEWAY TO REMAIN SAWCUT POINTS

A	Alignment=PropBikePath.All Station=624+31.87 Offset=-16.0'	E	Alignment=PropBikePath.All Station=625+62.32 Offset=-6.0'
B	Alignment=PropBikePath.All Station=624+41.86 Offset=-6.0'	F	Alignment=PropBikePath.All Station=625+34.29 Offset=-6.0'
C	Alignment=PropBikePath.All Station=624+46.22 Offset=-6.0'	G	Alignment=PropBikePath.All Station=625+44.42 Offset=-1.0' Angle From Pt=28°45'47"
D	Alignment=PropBikePath.All Station=624+33.33 Offset=-6.0'	H	Alignment=PropBikePath.All Station=625+55.29 Offset=-6.0'

LEGEND

—E—	UNDERGROUND ELECTRIC TO BE REMOVED	—E—	UNDERGROUND ELECTRIC TO REMAIN
—G—	UNDERGROUND GAS TO BE REMOVED	—G—	UNDERGROUND GAS TO REMAIN
—W—	UNDERGROUND WATER TO BE REMOVED	—W—	UNDERGROUND WATER TO REMAIN
—SS—	UNDERGROUND STORM SEWER TO BE REMOVED	—SS—	UNDERGROUND STORM SEWER TO REMAIN
—SAN—	UNDERGROUND SANITARY TO BE REMOVED	—SAN—	UNDERGROUND SANITARY TO REMAIN
		—FO—	UNDERGROUND FIBER OPTIC TO REMAIN

- ☼ EXISTING LIGHT POLE TO REMAIN
- ▨ MAINTAIN EXISTING DRIVEWAY FOR BIKE AND PEDESTRIAN PATH CONNECTION
- ▨ EXISTING BIKE AND PEDESTRIAN PATH TO REMAIN IN PLACE
- ☼ CAUTION COMBUSTIBLE FLUIDS

REMOVAL AND DEMOLITION ITEMS

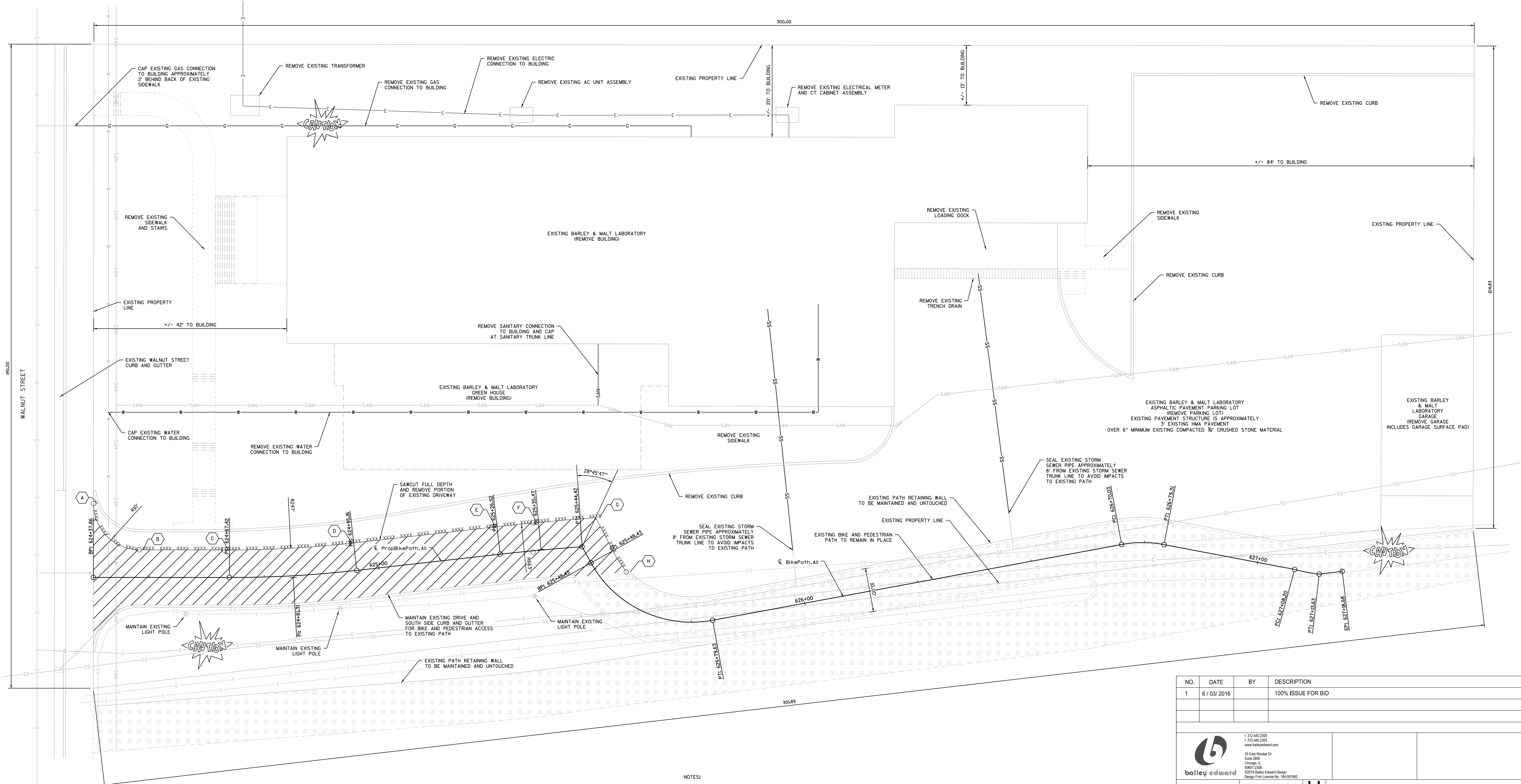
ITEM	QUANTITY	UNIT
CLEARING	0.75	ACRE
GRUBBING	0.75	ACRE
SAWCUT ASPHALT FULL DEPTH	130	LF
REMOVING CONCRETE SIDEWALK	158	SY
REMOVING EXISTING TRENCH DRAIN	36	LF
REMOVING EXISTING LOADING DOCK	40	SY
REMOVING ASPHALTIC SURFACE	1260	SY
REMOVING CURB & GUTTER	392	LF
REMOVING EXISTING PORCH	25	SY
REMOVING EXISTING CONCRETE STEPS	12	SY
REMOVING EXISTING GAS CONNECTION TO BUILDING	137	LF
REMOVING EXISTING WATER CONNECTION TO BUILDING	179	LF

REMOVAL AND DEMOLITION ITEMS CONTINUED

ITEM	QUANTITY	UNIT
REMOVING EXISTING SANITARY CONNECTION TO BUILDING	25	LF
REMOVING EXISTING STORM SEWER TO BUILDING	106	LF
REMOVING EXISTING ELECTRIC CONNECTION TO BUILDING	138	LF
REMOVING EXISTING TRANSFORMER	1	EACH
REMOVING EXISTING AC UNIT ASSEMBLY	1	EACH
REMOVING EXISTING ELECTRICAL METER AND CT CABINET ASSEMBLY	1	EACH
CAP EXISTING GAS CONNECTION	1	EACH
CAP EXISTING WATER CONNECTION	1	EACH
CAP EXISTING SANITARY CONNECTION	1	EACH
TERMINATE EXISTING ELECTRICAL CONNECTION	1	EACH
SEAL EXISTING STORM SEWER PIPE	2	EACH

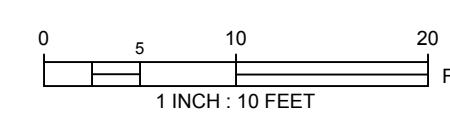
NOTE: FOR REFERENCE ONLY

NOTE: FOR REFERENCE ONLY



NOTES:

- REMOVE EXISTING BUILDING, PARKING LOT, SIDEWALKS, AND STORAGE GARAGE. EXISTING BIKE AND PEDESTRIAN PATH AND RETAINING WALL SHALL REMAIN IN PLACE, SAWCUT AND MAINTAIN 10 FEET OF EXISTING ASPHALT DRIVEWAY TO MAINTAIN BIKE AND PEDESTRIAN PATH CONNECTION FROM WALNUT STREET.
- UTILITIES SHOWN ON THIS SHEET WERE RECREATED FROM ASSULTS. THESE LOCATIONS ARE APPROXIMATE. EXACT LOCATIONS TO BE VERIFIED IN THE FIELD.
- REMOVE ALL EXISTING UTILITIES ON THE PROJECT SITE. COORDINATE WITH UTILITY COMPANIES TO DETERMINE UTILITY TERMINATION LOCATIONS.
- BACKFILL IN LOCATION OF EXISTING BUILDINGS ONCE DEMOLITION IS COMPLETE AND ANY OTHER LOCATIONS WHERE EXCAVATION OCCURS DURING DEMOLITION.



NO.	DATE	BY	DESCRIPTION
1	6/03/2016		100% ISSUE FOR BID

		1 312.440.2300 1 312.440.2303 www.baileyedward.com 20 East Wacker Dr. Suite 2000 Chicago, IL 60607-2200 ©2016 Bailey Edward Design Design Firm License No. 154-001962	
<b>BAILEY EDWARD DESIGN</b> PROJECT MANAGER: OHB DESIGNER: BE	<b>USDA</b> AOE: DM EPM: TV	<b>USDA</b> CIVIL SITE DEMOLITION PLAN DEMOLISH BARLEY AND MALT LABORATORY	Agricultural Research Service UNIVERSITY OF WISCONSIN, MADISON CAMPUS 501 NORTH WALNUT STREET, WI 53726
CHECKED BY: OHB BED PROJECT NO.: 1101-15-13	SAFETY & HEALTH: DM REAL PROPERTY: XXX	TASK ORDER NO.: AG-32SC-D-15-0320 ORDER DATE: 10.27.2015	DWG. NO. CD001 SHEET 1 OF 1

NOTES:  
 PLACE BASE AGGREGATE DENSE 1 1/4-INCH UNDER PROPOSED CONCRETE CURB AND GUTTER 30-INCH TYPE D AND CONCRETE CURB TYPE D AT A MINIMUM DEPTH OF 3-INCHES.  
 RESTORE THE RE-GRADED GROUND WITH MINIMUM 6 INCHES TOPSOIL, SEEDING MIXTURE NO. 75, AND FERTILIZER TYPE B.  
 GRADE LOT TO DRAIN AS INDICATED BY DRAIN WATER FLOW ARROWS.  
 ALL ELEVATIONS ARE RELATIVE AND SHOULD BE CHECKED AND ADJUSTED IN THE FIELD.

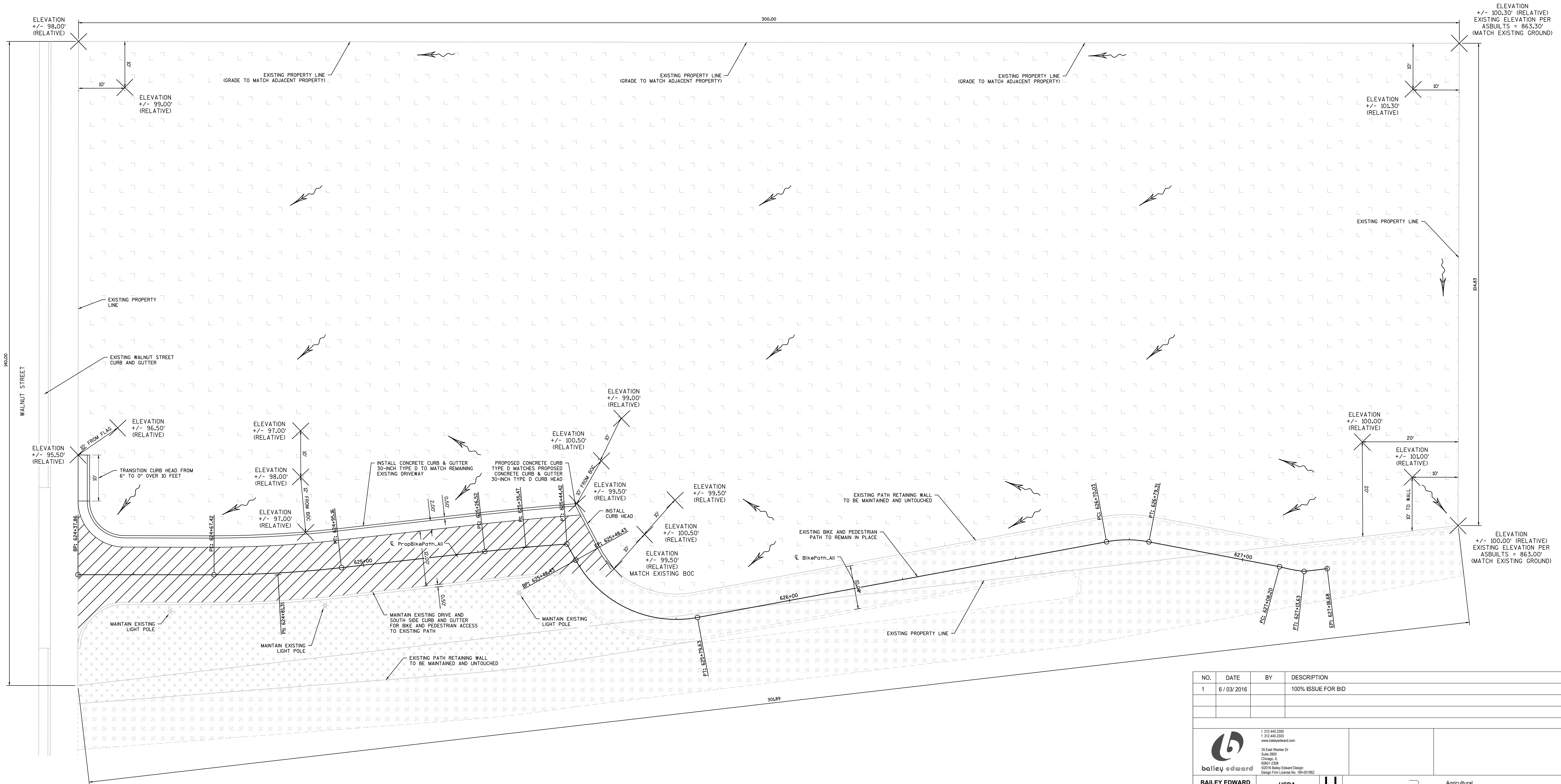
LEGEND

	EROSION MAT URBAN CLASS I TYPE B, TOPSOIL, SEED, AND FERTILIZER		EXISTING GROUND UNDISTURBED
	MAINTAIN EXISTING DRIVEWAY FOR BIKE AND PEDESTRIAN PATH CONNECTION		GRADE TO DRAIN WATER FLOW ARROW
	EXISTING BIKE AND PEDESTRIAN PATH TO REMAIN IN PLACE		RELATIVE GROUND ELEVATION POINT

RESTORATION ITEMS

ITEM	QUANTITY	UNIT
EXCAVATION COMMON	100	CY
BORROW	2500	CY
BASE AGGREGATE DENSE 1 1/4-INCH	8	TON
CONCRETE CURB TYPE D	16	LF
CONCRETE CURB & GUTTER 30-INCH TYPE D	130	LF
TOPSOIL	500	CY
EROSION MAT URBAN CLASS I TYPE B	3630	SY
FERTILIZER TYPE B	46	CWT
SEEDING MIXTURE NO. 75	23	LB

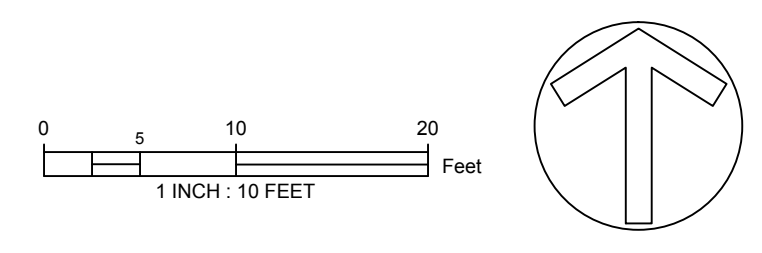
NOTE: FOR REFERENCE ONLY



NO.	DATE	BY	DESCRIPTION
1	6/03/2016		100% ISSUE FOR BID

	1 312.440.2300 1 312.440.2303 www.baileyedward.com 20 East Wacker Dr Suite 2000 Chicago, IL 60607-2200 02516 Bailey Edward Design Design Firm License No. 154-001962		
<b>BAILEY EDWARD DESIGN</b>	<b>USDA</b>	<b>USDA</b>	
PROJECT MANAGER: OHB	AOE: DM	<b>SITE RESTORATION PLAN</b>	
DESIGNER: BE	EPM: TV	<b>DEMOLISH BARLEY AND MALT LABORATORY</b>	
CHECKED BY: OHB	SAFETY & HEALTH: DM	TASK ORDER NO.: AG-32SC-D-15-0320	UNIVERSITY OF WISCONSIN, MADISON CAMPUS 501 NORTH WALNUT STREET, WI 53726
BED PROJECT NO.: 1101-15-13	REAL PROPERTY: XXX	ORDER DATE: 10.27.2015	DWG. NO. C001
			SHEET 1 OF 2



File Path  
1/20/2016 10:28:24 AM



# **Demolition Recycling and Reuse Plan**

**United States Department of Agriculture (USDA)  
Agricultural Research Service (ARS)**

**Barley Malt Research Facility (Laboratory)  
501 Walnut Street  
Madison, Wisconsin 53726**

**October 2016**

**Prepared for:**

Bryan Johnson  
Recycling Coordinator  
City of Madison  
Streets Division  
1501 W. Badger Road  
Madison, WI 53713

**Dakota Intertek**  


**Prepared by:**

Dakota Intertek Corp.  
16600 West National Avenue  
New Berlin, WI 53151  
Ph: (262) 784-8844

## Demolition Recycling and Reuse Plan

### *Description of Building & Site*

The United States Department of Agriculture, Agricultural Research Service (USDA-ARS) has contracted with Dakota Intertek Corp. (Dakota) to demolish a defunct former laboratory building located at 501 North Walnut Street, Madison, WI (site). The project is full mechanical demolition, with no deconstruction elements.

The site has not been in service for approximately nine years, and there are no plans for future site development at this time. The site building is a two-story 9,570 square foot brick and block structure with full basement. A detached 800 square foot four-bay garage will also be removed.

### *Recycling and Reuse Goals*

The USDA-ARS requires a minimum of fifty percent (50%) by weight of total project solid waste be diverted from landfill. Dakota Intertek Corp. places a high priority on maximizing source reduction, reuse, and recycling of solid waste. Dakota's internal goal for this project is an eighty percent (80%) landfill diversion, by weight.

### *Reuse*

Dakota will maximize reuse of all interior materials within the facility. Dakota will internally reclaim select items such as tables, desks, chairs, and miscellaneous office products for reuse.

Dakota has a working history with *Habitat for Humanity*, and will use their services at the USDA-ARS Barley Malt Laboratory demolition. Prior to demolition activities, Madison Habitat for Humanity will be allowed to remove any and all items of their choosing.

At the time of this report generation, a precise inventory of those items selected for reuse cannot be generated. A prebid walkthrough of the abandoned laboratory suggests items that are available for beneficial reuse include: tables, chairs, desks, laboratory glassware, laboratory and bathroom plumbing fixtures, cabinets, counter tops, doors, trim, baseboards, siding, assorted light fixtures, and assorted abandoned property.

## ***Recycling***

The majority of building and grounds materials will be recycled:

- **Asphalt:**  
100% recycling of an estimated 400 tons;  
Homburg Construction, Madison
- **Concrete:**  
100% recycling of an estimated 450 tons;  
Homburg Construction, Madison
- **Brick and Block:**  
100% recycling of an estimated 1,400 tons;  
Homburg Construction, Madison
- **Trees, Land Clearing Brush:**  
100% recycling of six (6) trees, brush (wood chipped offsite);  
Advanced Restoration, Milwaukee
- **Metal:**  
90% recycling of an estimated 10 tons, including air handling units;  
(CFC's will be properly evacuated by a licensed contractor)  
All Metal Recycling, Madison
- **Appliances:**  
100% recycling of an estimated 2 tons;  
(CFC's will be properly evacuated by a licensed contractor)  
All Metal Recycling, Madison
- **Wood, Drywall/Wallboard, Mixed Debris:**  
50% recycling of an estimated 50 tons;  
Landfill Reduction, Madison
- **Mercury (switches, thermometers, gauges):**  
(Mercury-containing devices will be properly removed and containerized by trained Dakota professionals, for proper disposal/recycling)  
100% recycling of an estimated less than 1 ton;  
Veolia Environmental Services, Milwaukee
- **Fluorescent Bulbs:**  
(All fluorescent bulbs will be properly removed and containerized by trained Dakota professionals, for proper disposal)  
100% disposal  
Badger Materials, Milwaukee

- PCB-Containing Light Ballasts  
(PCB-containing devices will be properly removed and containerized by trained Dakota professionals, for proper disposal/recycling)  
100% recycling for an estimated less than 1 ton;  
Veolia Environmental Services, Milwaukee

Asbestos containing building materials and lead paint will be properly abated by Wisconsin Department of Health Services/Wisconsin Department of Natural Resources-certified Dirty Ducts (Madison, Wisconsin) prior to demolition, with all spoils being landfilled at a Subtitle D landfill (Waste Management Sun Prairie).

## ***IDENTIFICATION OF RECYCLING CONTRACTORS***

### ***Demolition Contractor***

Dakota Intertek Corp.  
16600 West National Avenue  
New Berlin, WI 53151  
Ph: (262) 784-8844

### ***Asbestos and Lead Abatement Contractor***

Dirty Ducts  
3025 Perry Street  
Madison, WI 53713  
Ph: (608) 204-3828

### ***Concrete, Asphalt, Brick & Block Recycling***

Homberg Construction  
6106 Milwaukee Street  
Madison, WI 53718  
Ph: (608) 249-7195

### ***Metal and Appliance Recycling***

All Metal Recycling  
1802 South Park Street  
Madison, WI 53173  
Ph: (608) 255-0960

### ***Wood and Debris Recycling***

Landfill Reduction  
7102 US Hwy 12 & 18  
Madison, WI 53718  
Ph: (608) 960-4580

## ***Tree and Brush Recycling***

Advanced Restoration  
4231 County Rd. KK  
Port Washington, WI 53074  
Ph: (262) 692-6575

## ***Mercury and PCB-Containing Material Recycling***

Veolia Environmental Services  
125 S 84th St #175  
Milwaukee, WI 53214  
Ph: (414) 479-7800

## ***Asbestos/Lead Landfill Facility***

Waste Management Madison Prairie Landfill  
6002 Nelson Road  
Sun Prairie, WI 53590  
Phone: (608) 837-9031