

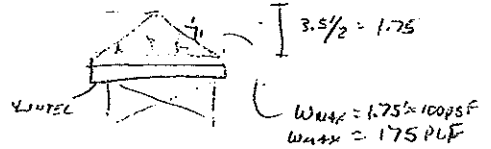
LOCATOR MAP



Project No: 1509.07	Page: 1/1
Project Name: TIA TOP DOOR LINTEL	
Date: 7-15-15	Engineer: CARL F

SCOPE DESIGN OF LINTEL TO ALLOW REMOVAL OF A 3'-4" CLEAR OPENING THROUGH AN 8" MASONRY BEARING WALL BETWEEN EXISTING TAVERN AND ADJACENT SPACE. DOOR HEIGHT = 81" ±

WALL HEIGHT / JOIST BEARING OVER OPENING > OPENING WIDTH IS GREATER THAN 1/2 OPENING WIDTH ⇒ WILL NOT CONTRIBUTE LOAD TO THE LINTEL.



$$\text{Moment} = \frac{175 \times 3.5^2}{8} = 267 \text{ ft-lb}$$

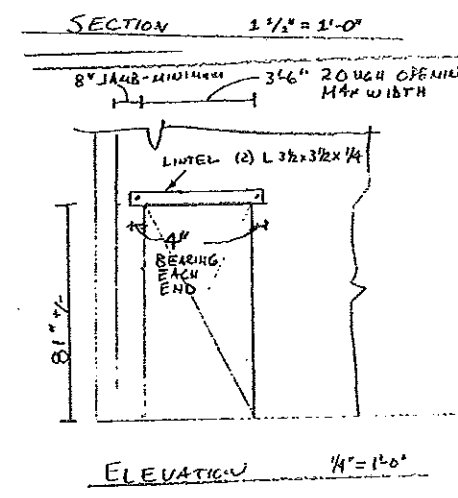
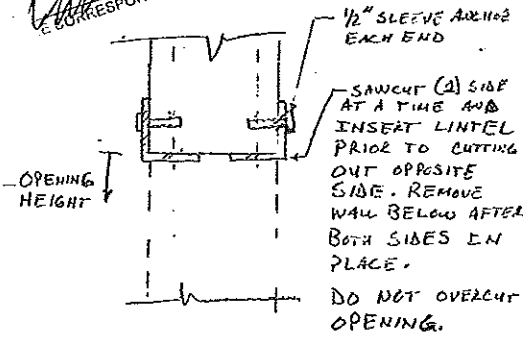
$$S_x \geq \frac{267 \times 12}{0.6 (3600)} = 0.15 \text{ in}^3$$

$$I_x \geq \frac{5(0.15)(3.5)^3 (1.75)}{384(29000)(\frac{3.5 \times 12}{800})} = 0.30 \text{ in}^4$$

PROVIDE L3x2x3/2x1/4 EACH SIDE
 $S_x = 1.75 \times 2 = 3.5 \text{ in}^3 > 0.15 \text{ in}^3 \Rightarrow \text{OK}$
 $I_x = 2 \times 2 = 4 \text{ in}^4 > 0.30 \text{ in}^4 \Rightarrow \text{OK}$



PLANS IS ADDITIONALLY APPROVED BY THE CITY OF MADISON 7.10.15 FOR CORRESPONDENCE



ONING APPROVED
 late 8/23/15
 Zoning Administrator
 MADISON - WISCONSIN

-SITE DRAINAGE ACCEPTED
 E. Miller
 CITY ENGINEER 8/10/15
 DATE

PARKING LOT PLAN APPROVED
 In accordance with Section 10.08 of the General Ordinances
 CITY OF MADISON
 8/17/15
 J. ...

Approved entrances must be constructed by a licensed cement finisher.

EXISTING DRIVE TO BE CLOSED
 COMMERCIAL AVE

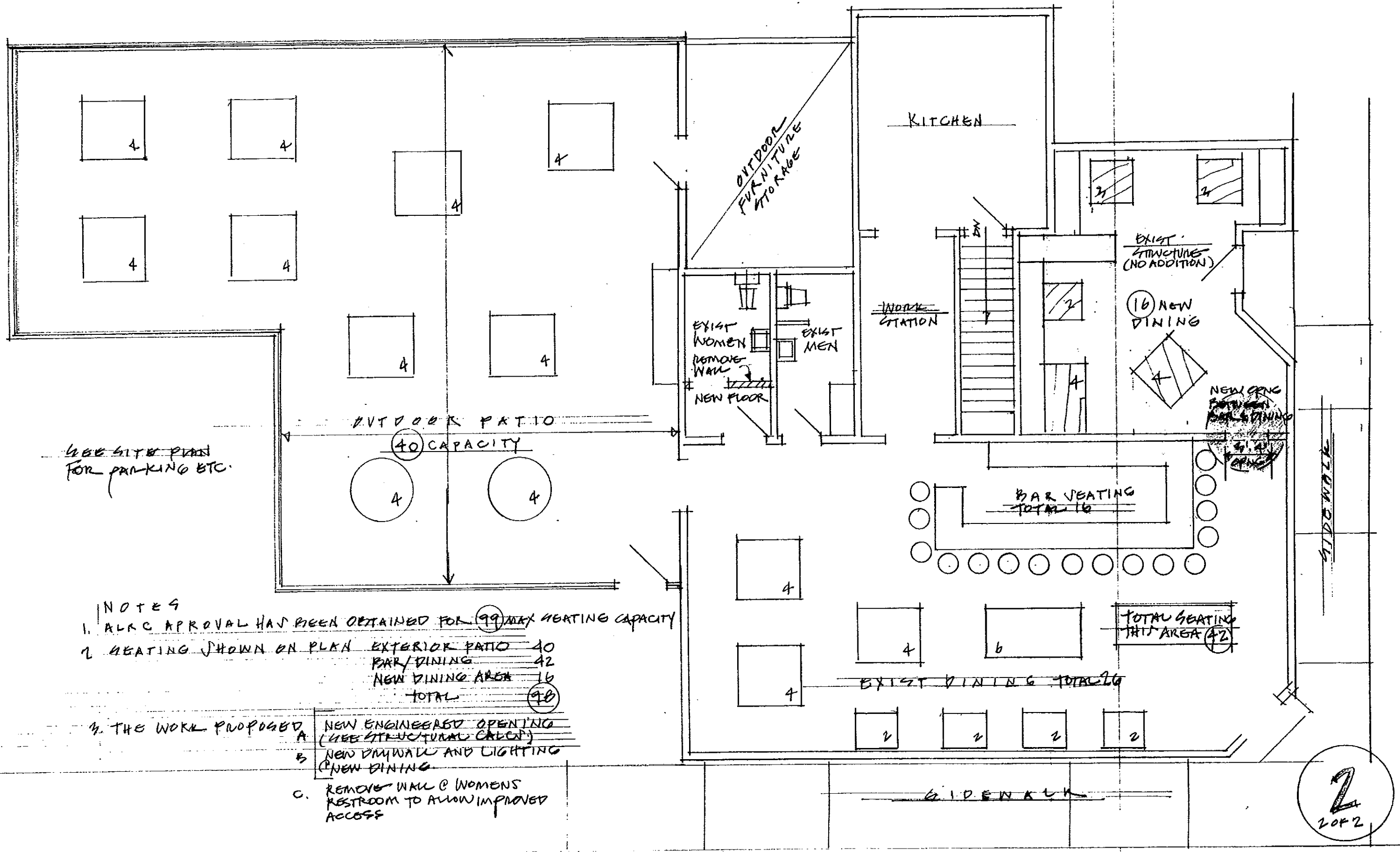
EXIST. PATIO
 48\"/>

SHEET INDEX

1	LOCATOR, APPROVED SITE PLAN, STRUCTURAL INFORMATION FOR NEW OPENING
2	FLOOR PLAN @ NEW OPENING LOCATION & CAPACITY COUNT
1	NEW WALL OPENING @ 601 NORTH STREET MADISON, WISCONSIN SEPT 2, 2015

1 OF 2

LINVILLE ARCHITECTS
 AND E. WILSON, MADISON
 (608) 576-6549



SEE SITE PLAN FOR PARKING ETC.

NOTES

1. ALRC APPROVAL HAS BEEN OBTAINED FOR 99 MAX SEATING CAPACITY
2. SEATING SHOWN ON PLAN

EXTERIOR PATIO	40
BAR/DINING	42
NEW DINING AREA	16
TOTAL	98

3. THE WORK PROPOSED

- A. NEW ENGINEERED OPENING (SEE STRUCTURAL CHECK)
- B. NEW DIV WALL AND LIGHTING (NEW DINING)
- C. REMOVE WALL @ WOMENS RESTROOM TO ALLOW IMPROVED ACCESS

TOTAL SEATING THIS AREA 42

EXIST DINING TOTAL 26

BAR SEATING TOTAL 16

OUTDOOR PATIO 40 CAPACITY

KITCHEN

OUTDOOR FURNITURE STORAGE

EXIST WOMEN REMOVE WALL NEW FLOOR

EXIST MEN

WORK STATION

EXIST. STRUCTURES (NO ADDITION)

16 NEW DINING

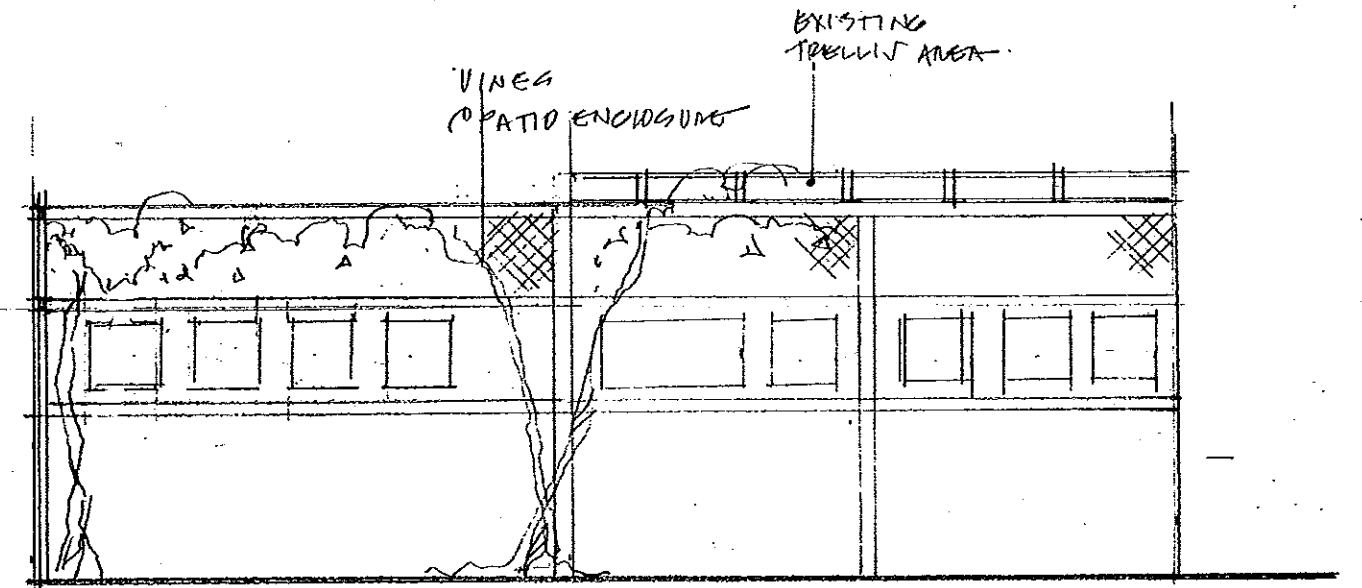
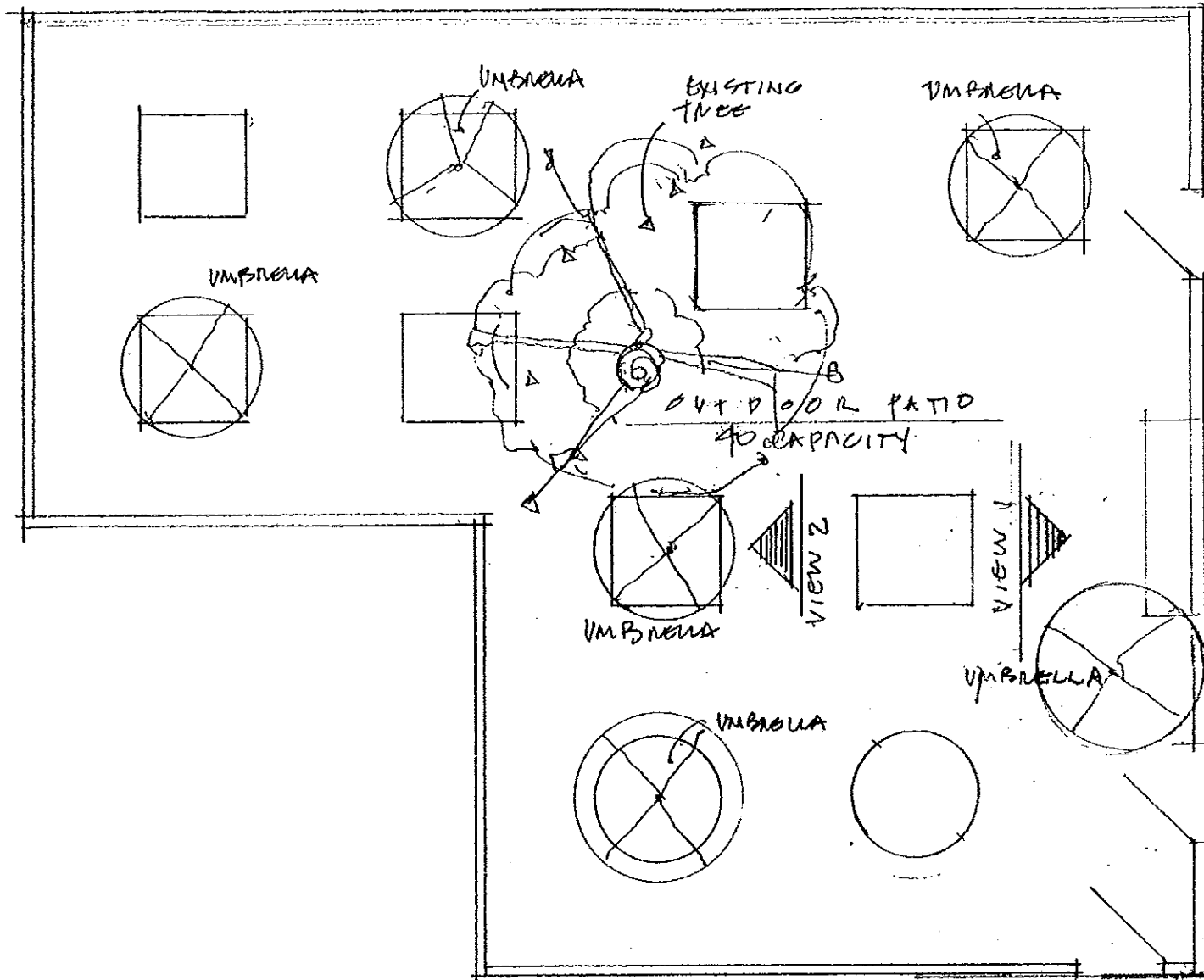
NEW CONC. BETWEEN BAR & DINING

SIDEWALK

2
2 OF 2

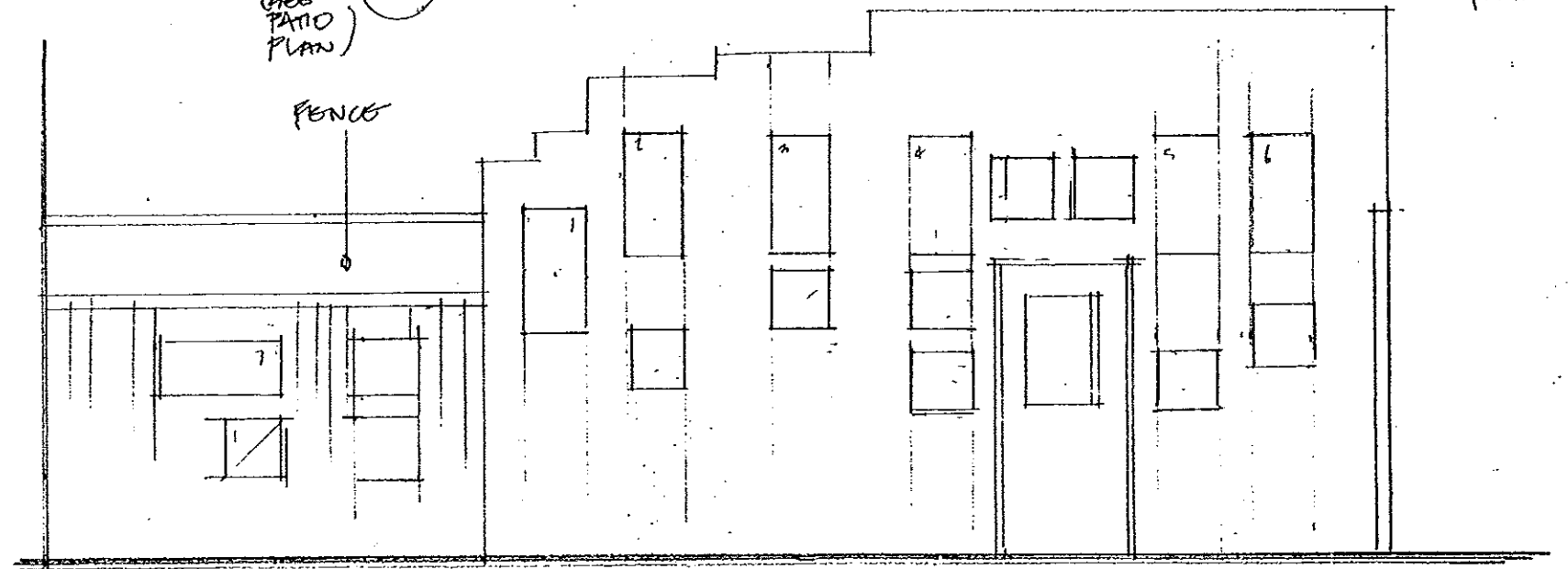
CAPACITY FLOOR PLAN

SHOWING AREA OF NEW WORK
601 NORTH STREET, MADISON, WISC



PATIO PLAN
 @ UMBRELLAS @
 TABLE (6 THUG)

VIEW 2
 (SEE PATIO PLAN)
 VIEW TOWARDS FENCE PATIO ENCLOSURE WITH SUGGESTED ACOUSTICAL PANELS



VIEW 1
 (SEE PATIO PLAN)
 VIEW TOWARDS BUILDING WITH SUGGESTED ACOUSTICAL PANELS