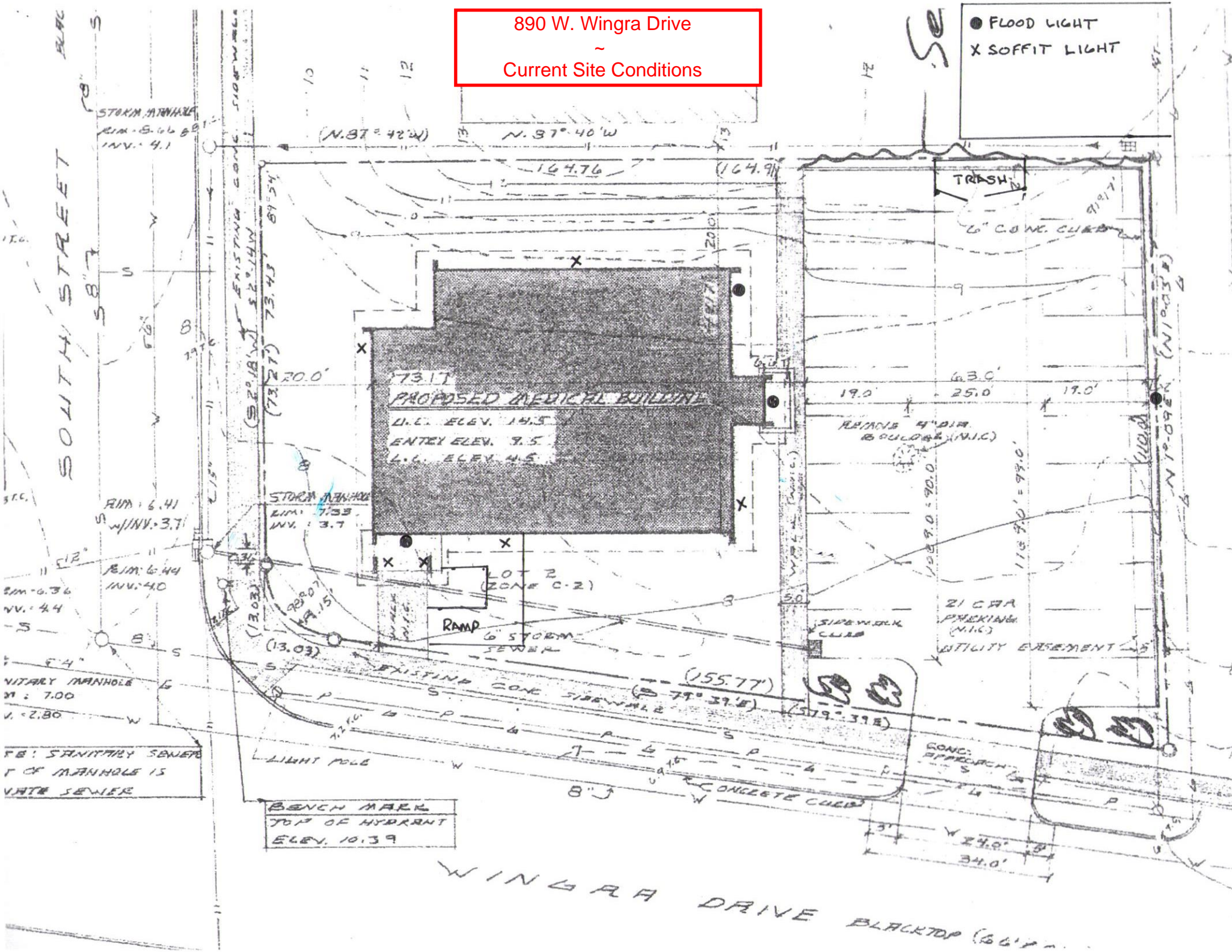


890 W. Wingra Drive
~
Current Site Conditions

● FLOOD LIGHT
X SOFFIT LIGHT



STORM MANHOLE
RIM: 8.66
INV.: 4.1

RIM: 6.41
W/INV.: 3.7

RIM: 6.44
INV.: 4.0

WATER MANHOLE
RIM: 7.00
INV.: 2.80

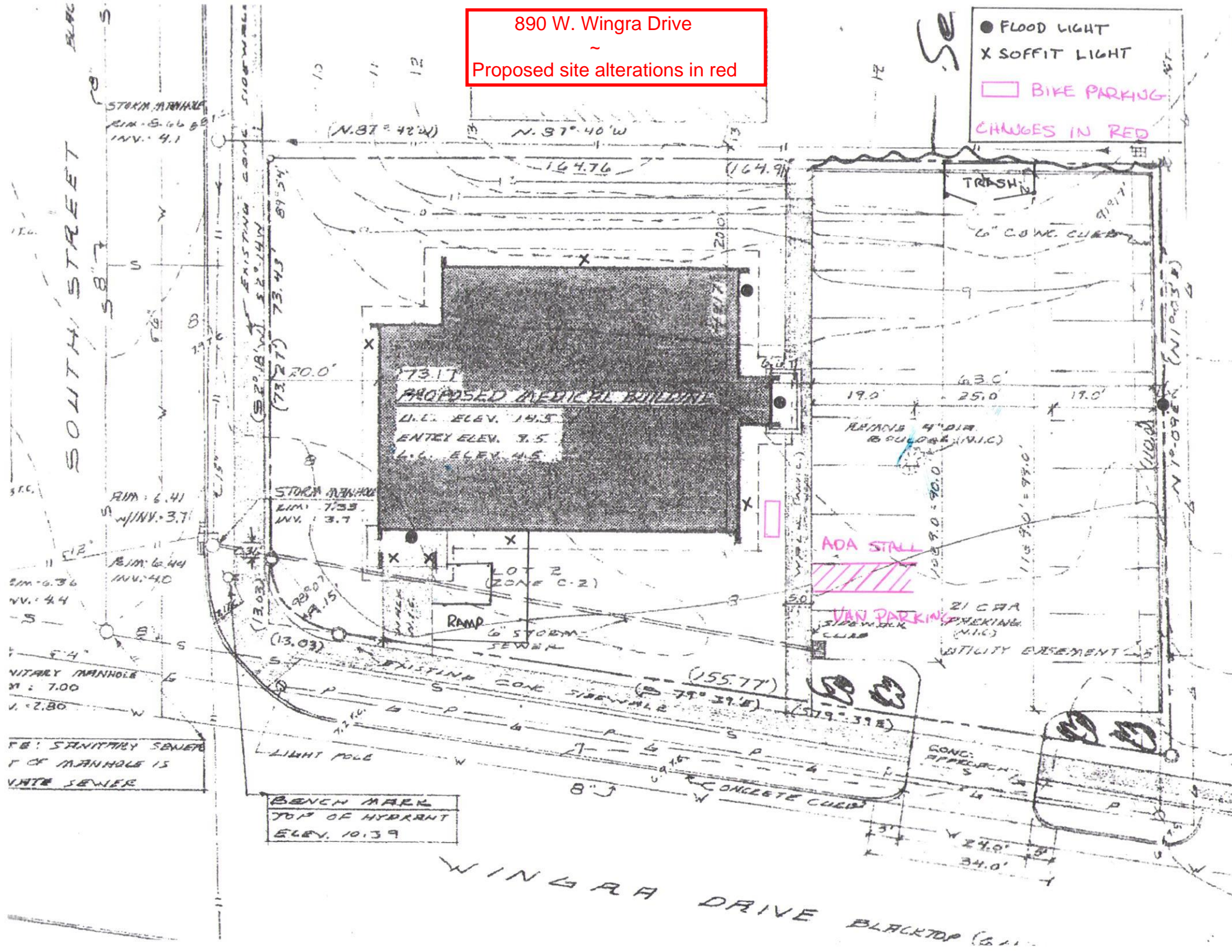
FB: SANITARY SEWER
TOP OF MANHOLE IS
WATER SEWER

BENCH MARK
TOP OF HYDRANT
ELEV. 10.39

WINGRA DRIVE BLACKTOP (66' x ...)

890 W. Wingra Drive
Proposed site alterations in red

- FLOOD LIGHT
- X SOFFIT LIGHT
- BIKE PARKING
- CHANGES IN RED



SB: SANITARY SEWER
TOP OF MANHOLE IS
DATE SEWER

BENCH MARK
TOP OF HYDRANT
ELEV. 10.39

WINGRA DRIVE BLACKTOP (6.11)