

“Time Traveler”

**A proposal from Actual Size Artworks
Madison Metro Campus**



When researching this project, our imagination was captured by the vintage bus living in a Metro satellite facility. Its backstory is charming and funny – Metro employees saved this small bus from its fate as a chicken coop on a nearby farm and lovingly restored it, but still it sits unloved and unseen in a warehouse. We pondered many ideas but could not forget about the bus.



We think that this story adds to the quirky “Madison lore” that helps give the city its personality and character. It showcases a local treasure that is dear to Metro staff and highlights an important part of the city’s history. Our goal with this artwork is to create a small but delightful moment for neighborhood residents and visitors, one that helps create conversations and provides a touchstone for Metro and for the community.

Storytelling is part of the glue of society. During the pandemic conversation went online (or disappeared entirely), and we all realized how much we lost when we couldn’t sit around with our friends, neighbors and co-workers and talk. There are bright spots in the local landscape that illuminate Madison’s history, provoke stories and bring people together – the Statue of Liberty under the ice, the Lost City in the arboretum, the (alleged) Lake Mendota Sea Serpent. With this sculpture we want to let the tale of the vintage bus and its rescue join the ranks of Madison legend.



Another aspect of this project that we want to highlight is public transportation as a “common good”, part of the lifeblood of a city. This bus makes visible the history of public transit in Madison.



We considered different scenarios for the bus – perched atop the roof of the warehouse, displayed behind the currently-covered windows into the building – but decided the grassy triangle near the entrance was the best placement so that people could really enjoy it. Because the bus cannot be exposed to the elements, we envisioned it enclosed in a glass box, and then we realized Madison is filled with glass boxes: bus shelters.



We propose to place the bus on a pedestal-like base inside a clear custom shelter made by Handi-Hut, the main supplier of Metro's current shelters. (The owner of Handi-Hut, John Cozza, is interested in working with us on this project.) The bus will contain solar lighting so that it glows like a beacon after dusk. Visible inside the bus will be a hen, in reference to the previous life of the bus as a chicken coop. We hope people will be attracted to the odd sight of the small bus in a glass house, and then notice the chicken and wonder why it's there. The sculpture will express what the warehouse is for (public transit) and tell the story of the bus rescue either through a scrolling LED strip mounted on the shelter, or in a bronze plaque located on the base.



This sculpture will not need to be moved when the siding work on the facility is being done.

The weather-tight shelter will have a locking door for access, vents in the roof, screening in the bottom to keep animals out, and a 2-tiered concrete base. The roof may be blue or translucent gray. There will be 12 – 18" clearance between the bus and the walls of the shelter. It will be located with enough setback for visual clearance. We expect it to be artistically successful in all seasons and weather conditions, including the snowy drifts that may accumulate around the sculpture during the winter.

We believe in the transformative potential of artwork in the community. As we move about our days, deep in thought or looking at a screen, the experience of engaging with our surroundings and our community can fade. Artwork can recharge this connection, waking us up and reminding us that we are bodies in space, sharing that space with others, not alone. Artwork can surprise us, pique our curiosity and our wonder. It creates a destination and embeds a place in our memory. Public spaces that contribute to the common good seem more important than ever today. These are our goals; we try to meet them with work that has a strong profile, a light touch, and excellent craftsmanship. In this way we help create a space for imagination and possibility.

Thank you for your consideration.

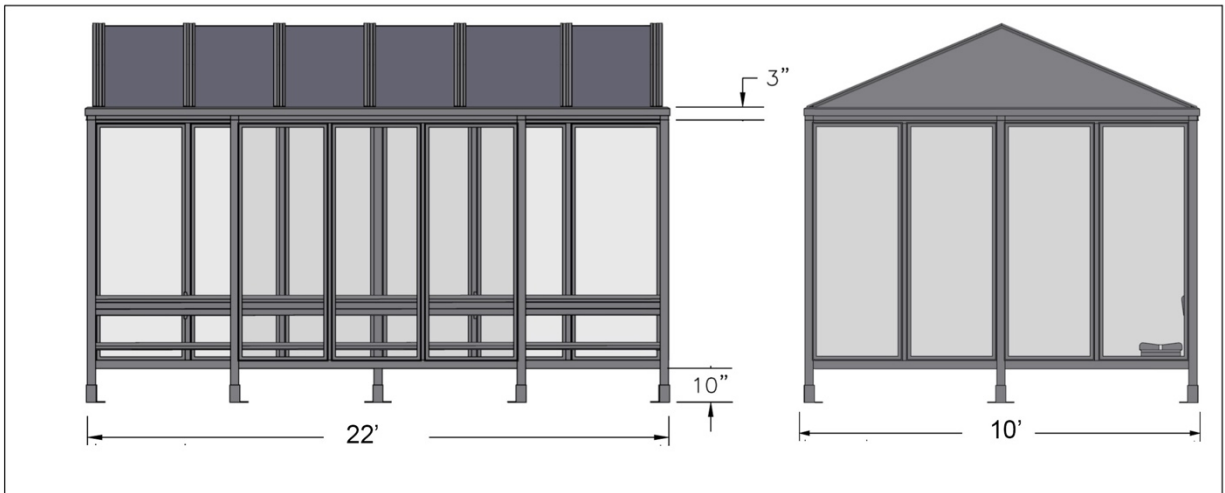


“Time Traveler”
with gray poly
roof; sample
LED scroll for
narrative



“Time Traveler”
with blue metal
roof





Budget: *(All labor to be contracted at prevailing wage)*

Handi-Hut custom shelter with locking door	\$56,000
Concrete Base (approx.. 536 s.f. x \$13/s.f.)	7,000
Delivery & Installation costs (unloading, assembly)	10,000
Moving bus to site	1,000
Lighting & electrical	7,000
Plaque or LED scroll for narrative	2,500
Cast resin hen	2,000
Steel mesh for bottom	2,000
Engineering and construction drawings (Kurt Frey P.E.)	5,000
Admin (permits, insurance, printing etc.)	2,500
Artist's fee 10%	11,000
<u>Contingency</u>	<u>4,000</u>
Total	110,000

Location:

Triangular grassy area at Ingersoll and East Washington, placed with required setback for visual clearance

Materials:

Vintage Bus

Custom Bus Shelter (safety glass, anodized aluminum) anchored to base

Concrete base

Solar LED lighting

LED scroll or bronze plaque

Cast resin chicken

Installation Method:

Concrete base poured on site; electrical service installed

Three sides of shelter installed on base with anchors

Vintage bus transported via flatbed, trailer ramps used to load & position bus in partial shelter

Lighting installed

Fourth side of shelter mounted

Locking shelter door located opposite bus door to permit access

Site landscaping

Maintenance:

Please note - This sculpture will not need to be moved when the building's siding is updated.

Long-lasting solar LEDs will be installed inside the bus to create a glowing effect at night. The locking door permits access to the interior space.

The shelter panels are standard from Handi-Hut and may be replaced if damaged.

