

CSOS Review of Existing Conditions Annie C. Stewart Memorial Fountain

Brief Introductions
Overview of project scope
Work performed thus far

CSOS Review of Existing Conditions

Overall Condition:

Fountain: very poor

Marble Sculpture: good



CSOS Review of Existing Conditions

Distress Conditions Present:

Extensive Cracking

Spalls/Missing Material

Patches/Coatings/Added Material

Vegetation/Bio growth

Discoloration/Deposits

Corrosion of Internal Steel

CSOS Review of Existing Conditions

Extensive Cracking



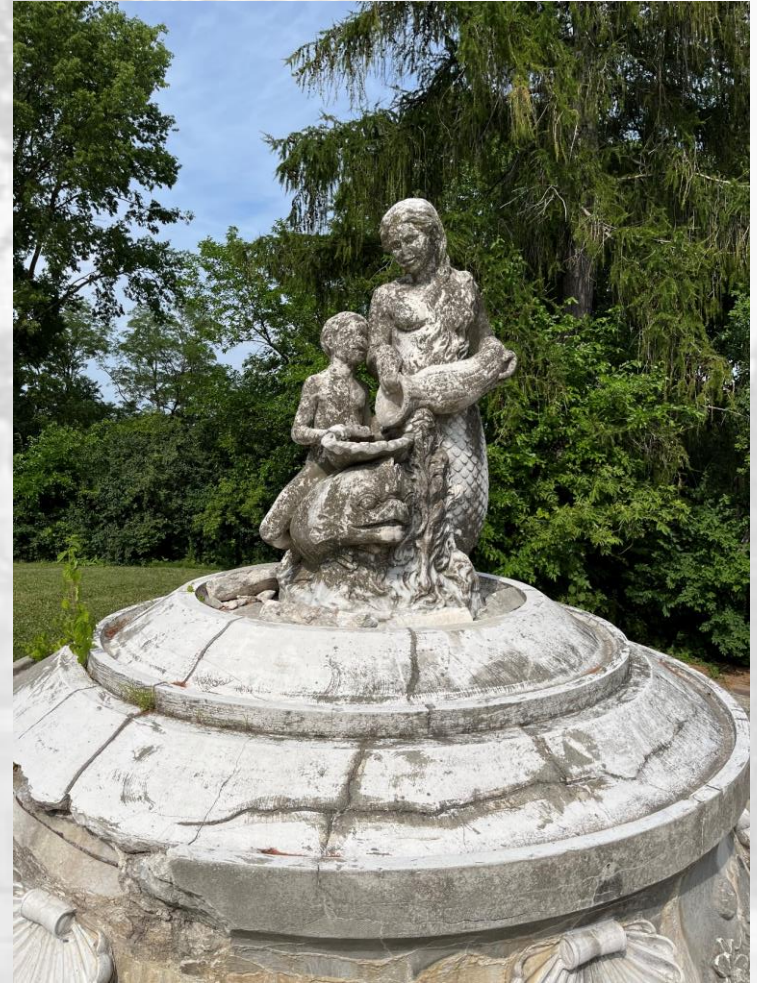
CSOS Review of Existing Conditions

Spalls/Missing Material



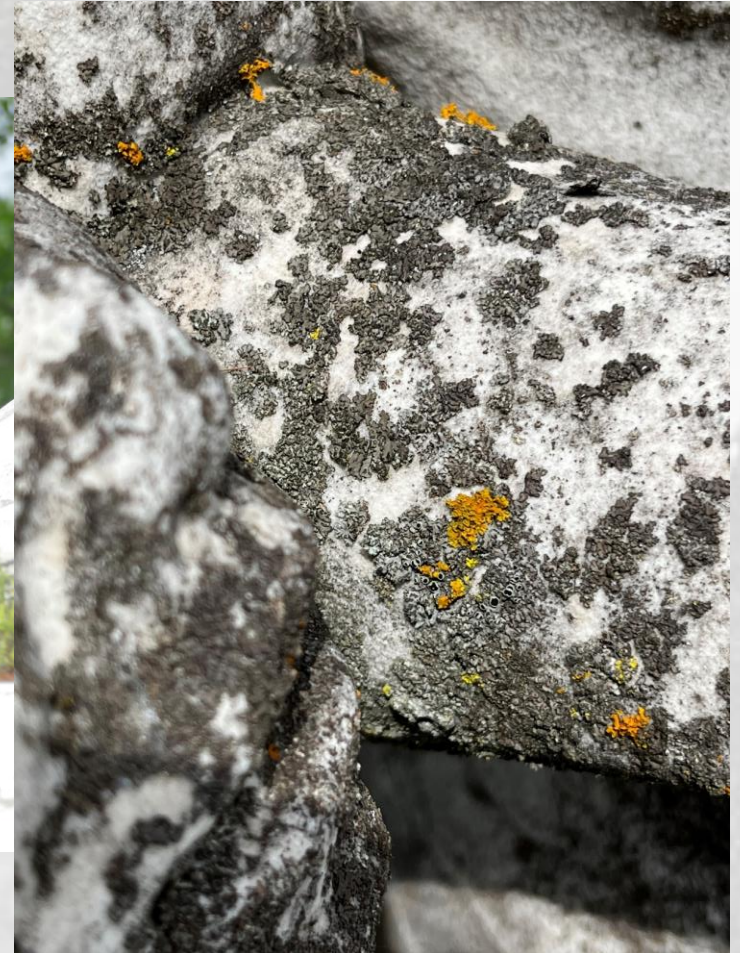
CSOS Review of Existing Conditions

Patches/Coatings/Added Material



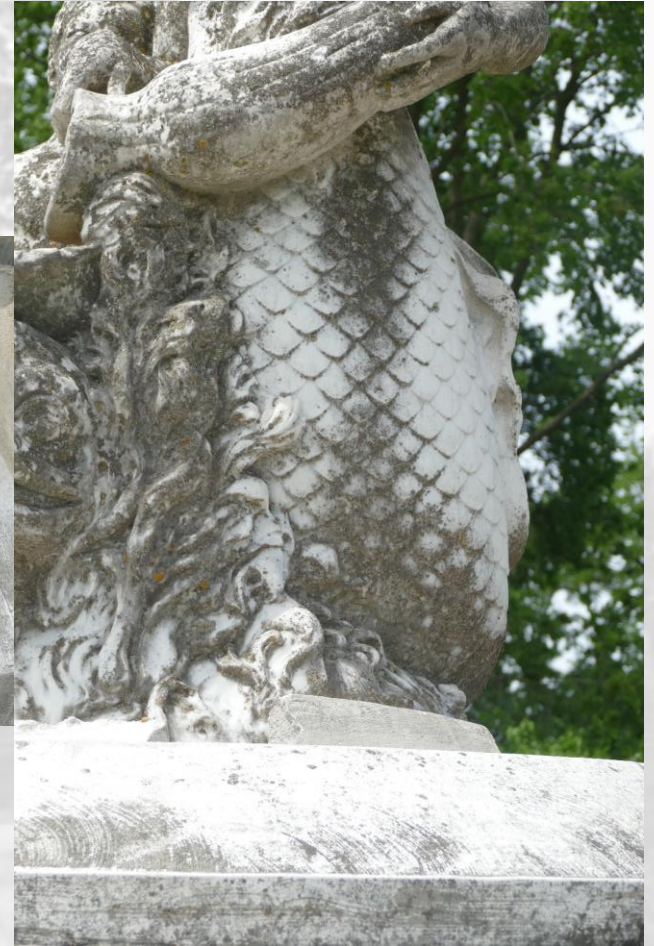
CSOS Review of Existing Conditions

Vegetation/bio growth



CSOS Review of Existing Conditions

Discoloration/Deposits



CSOS Review of Existing Conditions

Corrosion of Internal Steel



CSOS Review of Existing Conditions

Ground Penetrating Radar of Perimeter

WJE

Jamie Morris
CSOS, Inc.
July 25, 2022
Page 5

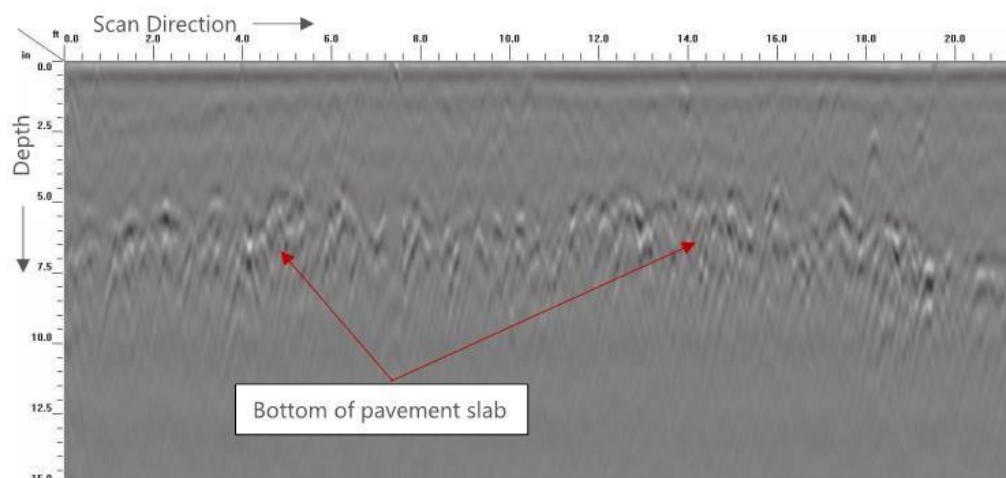


Figure 3. Portion of GPR scan #003

CSOS Review of Existing Conditions

Matrix of Treatment Options

MINIMAL REPAIRS/IN PLACE	MINIMAL REPAIR/RELOCATE OUTDOORS	MINIMAL REPAIRS/RELOCATE KEY SCULPTURAL COMPONENTS INDOORS
Not, feasible, safety hazard	Relocate marble, clean and install in alternate location on simple base	Relocate marble, clean and install in inside on simple base
MODERATE REPAIRS/IN PLACE	MODERATE REPAIR/RELOCATE OUTDOORS	MODERATE REPAIRS/RELOCATE KEY SCULPTURAL COMPONENTS INDOORS
Not feasible, still safety hazard	Relocate marble, clean, minimal recreations, install on new base mimicking the original (granite or limestone). No perimeter wall.	Relocate marble, clean, minimal recreations, install inside on new simple base
THOROUGH REPAIRS/IN PLACE	THOROUGH REPAIR/RELOCATE OUTDOORS	THOROUGH REPAIRS/RELOCATE KEY SCULPTURAL COMPONENTS INDOORS
"Repair" not feasible, require total reconstruction.	Above, with recreation of concrete perimeter wall.	Relocate marble, clean, minimal recreations, install inside on new base mimicking the original (granite or limestone). No perimeter wall.

CSOS Review of Existing Conditions

Matrix of Treatment Options

MINIMAL REPAIRS/IN PLACE	MINIMAL REPAIR/RELOCATE OUTDOORS	MINIMAL REPAIRS/RELOCATE KEY SCULPTURAL COMPONENTS INDOORS
Not, feasible, safety hazard	Estimated total: \$154-\$189K Estimated total including demolition of existing site \$204-\$244K	Estimated total: \$145-\$180K Estimated total including demolition of existing site \$195-\$235K
MODERATE REPAIRS/IN PLACE	MODERATE REPAIR/RELOCATE OUTDOORS	MODERATE REPAIRS/RELOCATE KEY SCULPTURAL COMPONENTS INDOORS
Not feasible, still safety hazard	Estimated total: \$257-\$293K Estimated total including demolition of existing site \$307-\$348K	Estimated total: \$165-\$205K Estimated total including demolition of existing site \$215-\$260K
THOROUGH REPAIRS/IN PLACE	THOROUGH REPAIR/RELOCATE OUTDOORS	THOROUGH REPAIRS/RELOCATE KEY SCULPTURAL COMPONENTS INDOORS
“Repair” not feasible, require total reconstruction. Estimated total including demolition of existing site \$410-\$425K	Estimated total: \$305-\$360K Estimated total including demolition of existing site \$355-\$415K	Estimated total: \$245-\$275K Estimated total including demolition of existing site \$295-\$360K

CSOS Review of Existing Conditions

National Register Criteria

The Annie C. Stewart is not currently listed in the National Register of Historic Places.

Type of Significance

Criterion A: Event

Criterion B; Person

Criterion C: Design/Construction

Criterion D: Information Potential

The Annie C. Stewart is not currently listed as a local landmark nor is it within a local or national landmark district.

It is indicated in the 1998 local Vilas Park Mound Group, but as a modern feature not contributing to the historic district



CSOS Review of Existing Conditions

National Register Criteria

Criteria for Evaluation includes review of Integrity on the aspects of:

Location – Retained, however site has shifted around it

Design – Retained, however weakened by loss of tritons and lack of water use

Setting – Loss, fountain no longer sits at the entrance to the zoo

Materials – Loss, many added repair materials and coatings

Workmanship – Retained but weak. Many modifications reduce the work by the original artist

Feeling – Retained but weak, due to missing elements and function

Association – Retained, fountain still associated with Annie C. Stewart, interpretive signage could improve association

CSOS Review of Existing Conditions

Additional Options



CSOS Review of Existing Conditions

Questions and Discussion