



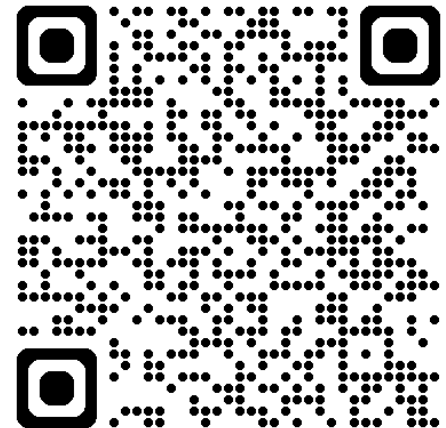
Mifflin and Carroll Plazas

Concept Progression, programming
needs and Public Art

October 6, 2025 Hybrid Meeting

Meeting Participant Demographics

https://www.surveymonkey.com/r/madison_meeting_demographics



Zoom

- **This meeting is being recorded.** By continuing to be in the meeting, you are consenting to being recorded. You have the option to turn off your camera and participate with audio only.
- Please keep **mic off** until after the presentation.
- During the Q&A, use “**Raise Hand**” to ask a question.
- **Chat can be used** for questions and comments

Agenda

- Project Recap
- Design Development
- Design Elements
- Next Steps / Future Meetings
- Questions / Comments

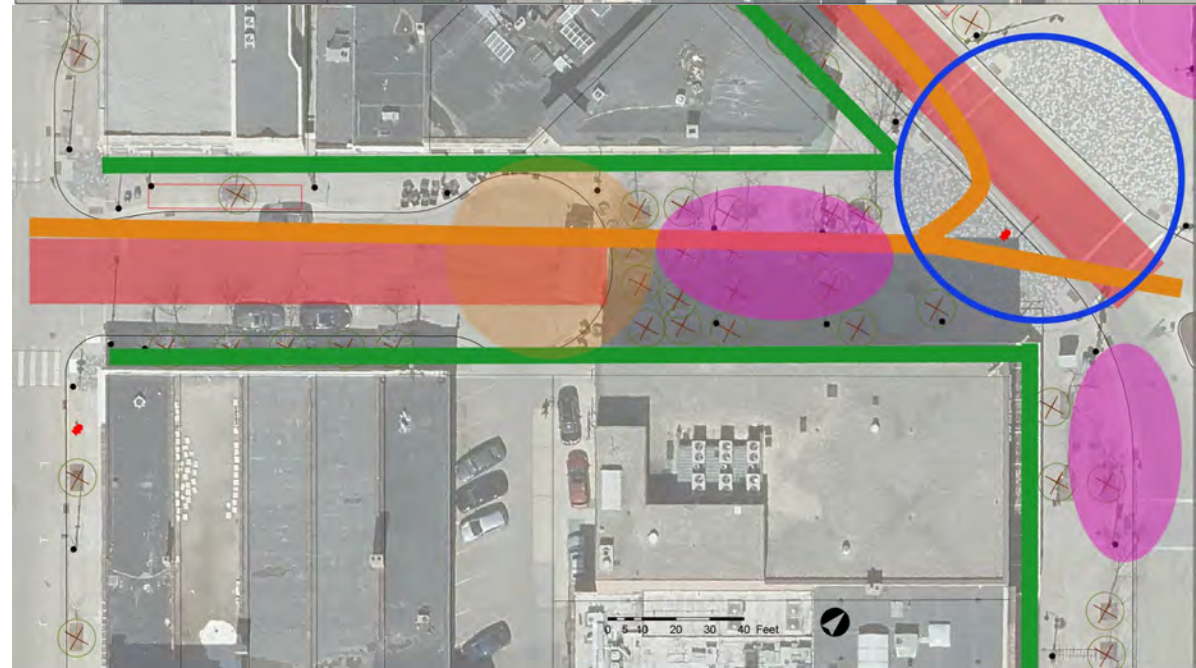




Meeting 1: Site evaluation

April 4, 2023

Meeting 1



Expanded Scope and Potential Phases



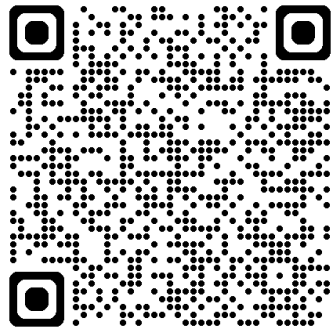
Big Move:
Transitioning street and
parking space to an urban
pedestrian plaza



Meeting 2: Design Issues and Precedents

January 30, 2025

Meeting 2 Public Comment Summary



Meeting 2: Goals for the space

- People-focused
- Comfortable, welcoming and inviting
- Safe
- Sense of place and identity
- Flexible
- Active, lively and well-utilized
- Peaceful

*“The space should be **safe, comfortable and well utilized** for pedestrians passing through and for people who are spending time in the space.”*

*“**Lively public space!** Lots of foot traffic, very **limited vehicle use**. No parking”*



Beekman Plaza

Meeting 2: What would bring you there?

- Seating (public and private)
- Cafés, food, food carts, etc.
- Areas of shade (and sun)
- Music/events
- Car-free space
- Trees and landscaping
- Vending
- Art/Play

*“I've been to so many performances there that are really poorly attended, because people walk by, are interested, but **there is space for only about four people** on the ledge by the garbage bin, and everyone else has to **sit on the ground.**”*



Larimer Square

Meeting 2: Other thoughts/comments

- Understanding uses/users is important
- **Iconic location** at top of State Street and Capitol Square should have signature space
- Get **more “fronts”** on the space
- Consider the **history of spaces and storytelling**
- Highlight what is **unique about the space**
- Coordinate **programming** with BID, library, Overture, museums
- **Bike access** is important
- **Refuse collection** needed for businesses and residents
- **Café spaces AND public seating**
- Consider different abilities – **“escaping” to a quiet spot**
- No public **restrooms** nearby



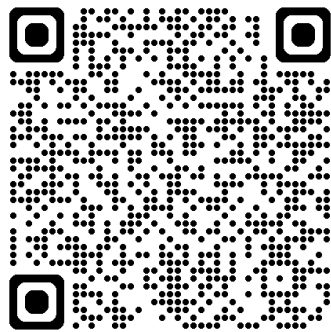
The Highline

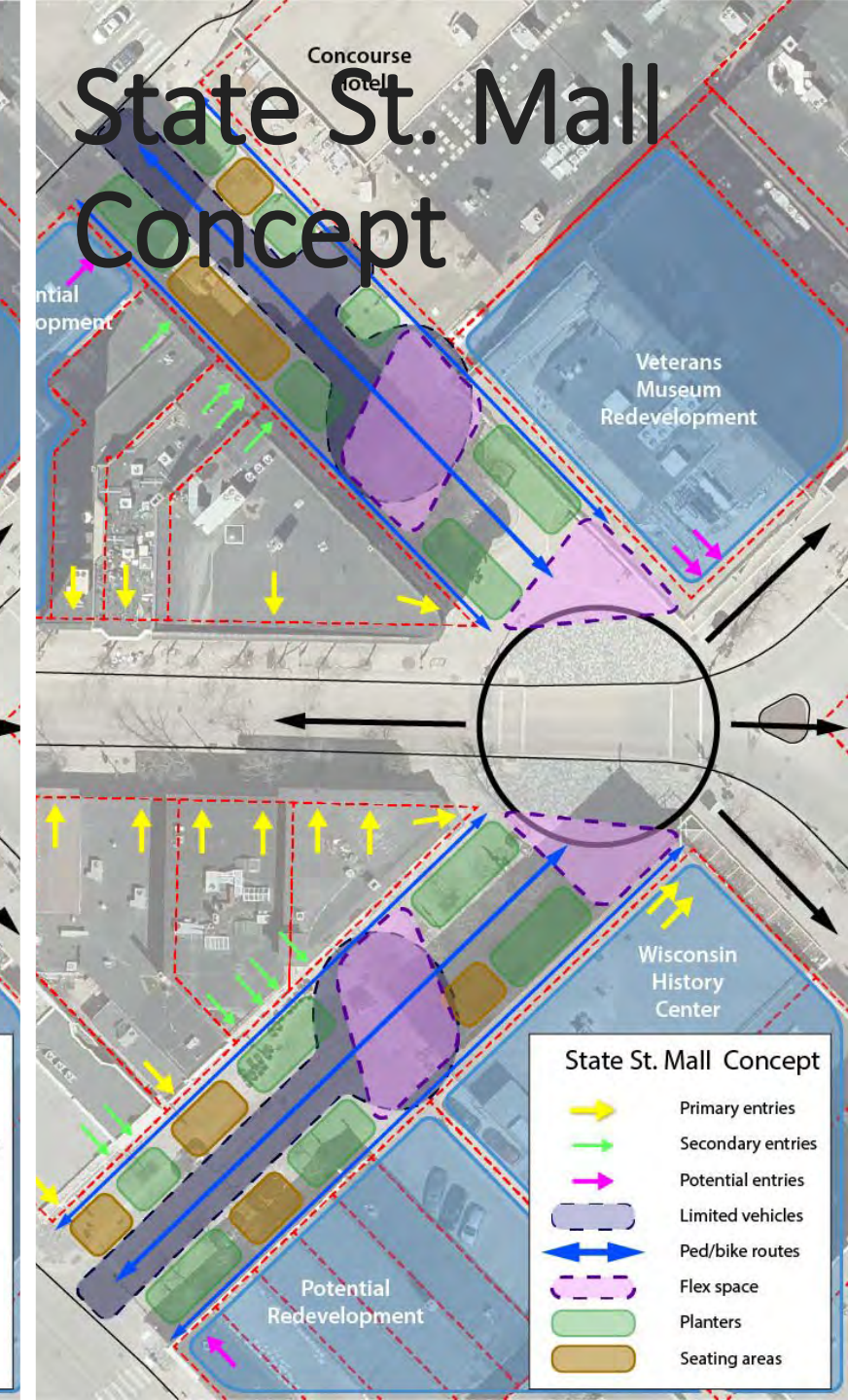
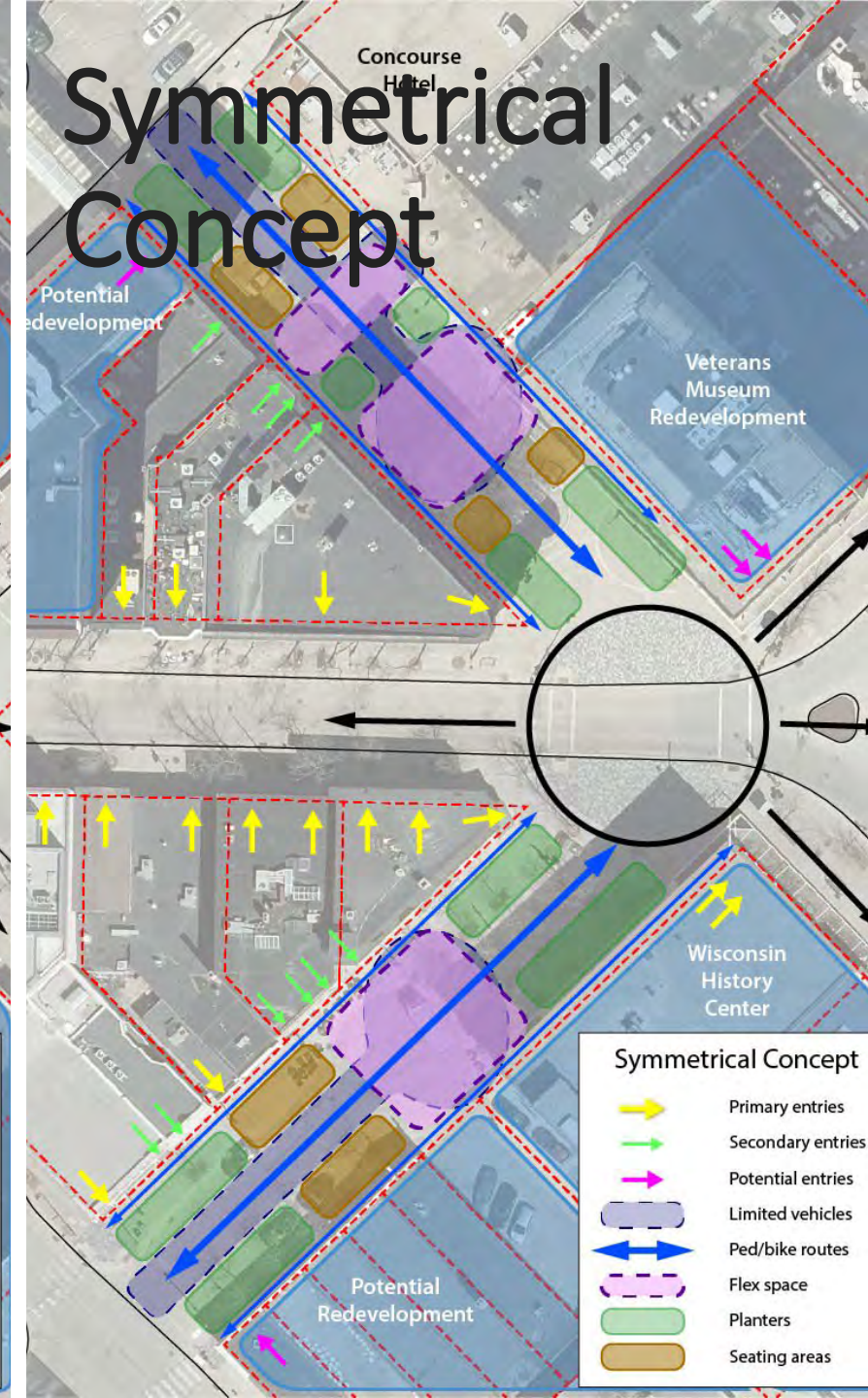
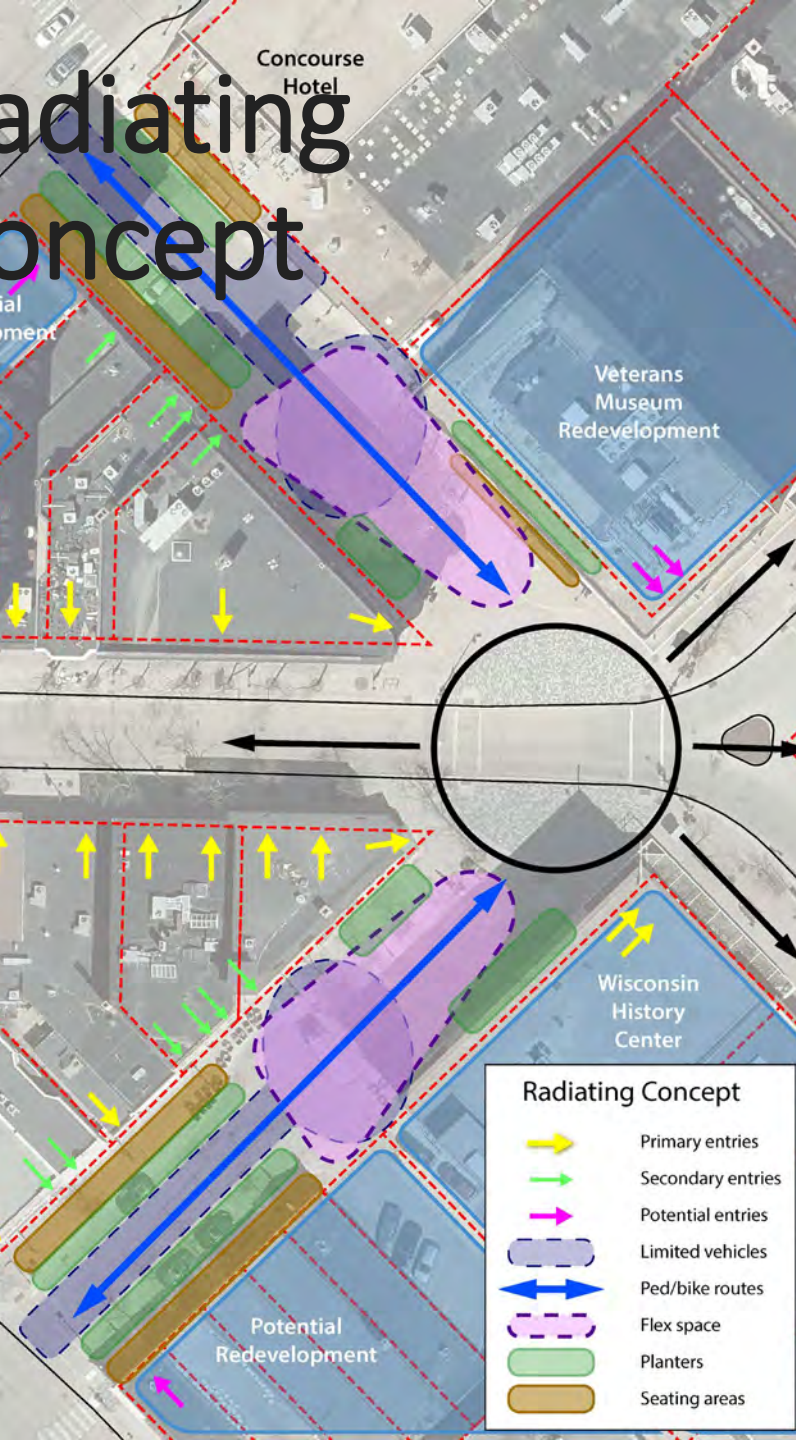


Meeting 3: Initial Design Concepts

June 25, 2025

Meeting 3 Public Comment Summary





Meeting 3 Comments

What elements do you like?

- Removal of curbs and expansion of plaza spaces to the full block
- Planters, landscaping and trees
- Bioswales
- Seating areas/porch swings
- Public art
- Openness of space creates an inviting area

What elements do you not like?

- Street graphics/paving should not be painted
- Play structures and things to climb on might be out of place

What is missing from the designs?

- Restroom, Drinking fountain/bottle filler
- Lighting
- Art concepts
- Selfie locations/Flamingos

Radiating Concept – Plan view



Radiating Concept.



State St. Mall Concept – Plan view



State St. Mall Concept – looking east





Current Draft Concept

Radiating + State Street

Radiating v2 – plan view



Radiating v2 – Mifflin Plaza from State Street



Radiating v2 – planters



Radiating v2 – Mifflin Plaza from Fairchild

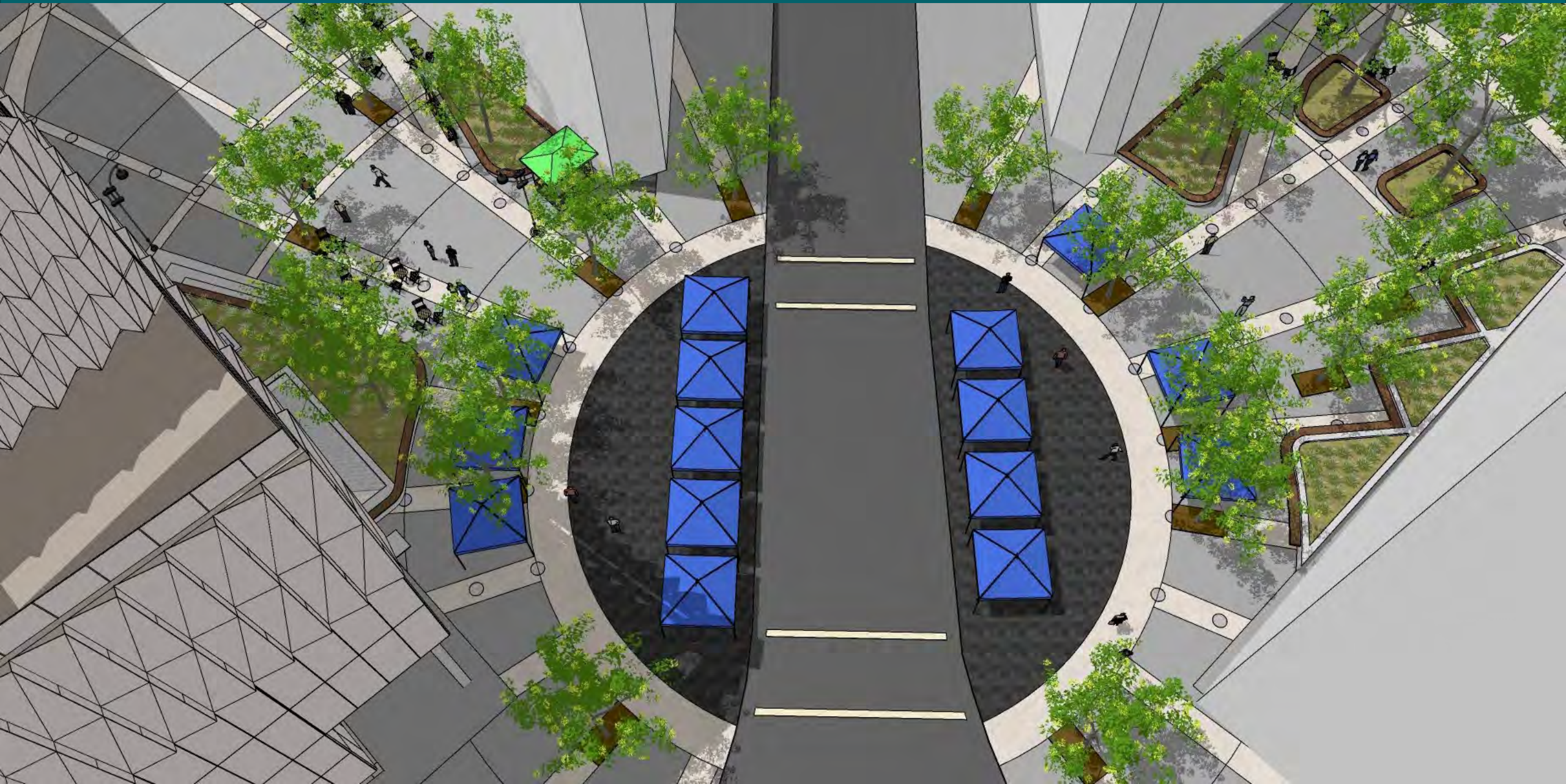


Radiating v2 – Event set up



*"I've been to so many performances there that are really poorly attended, because people walk by, are interested, but **there is space for only about four people** on the ledge by the garbage bin, and everyone else has to **sit on the ground.**"*

Radiating v2 – Event set up



Radiating v2 – Carroll St Plaza from State Street



Radiating v2 – Carroll St Plaza from Dayton St.



Radiating v2 – Carroll St Plaza from Dayton St.



Bikes and Peds

- Consulted City's Bike/Ped coordinator
- Low speed, shared space without separated facilities
- Short length with street crossings on each end
- Bike facility would increase speed of cyclists
- Pedestrians wouldn't perceive bike lane in closed street

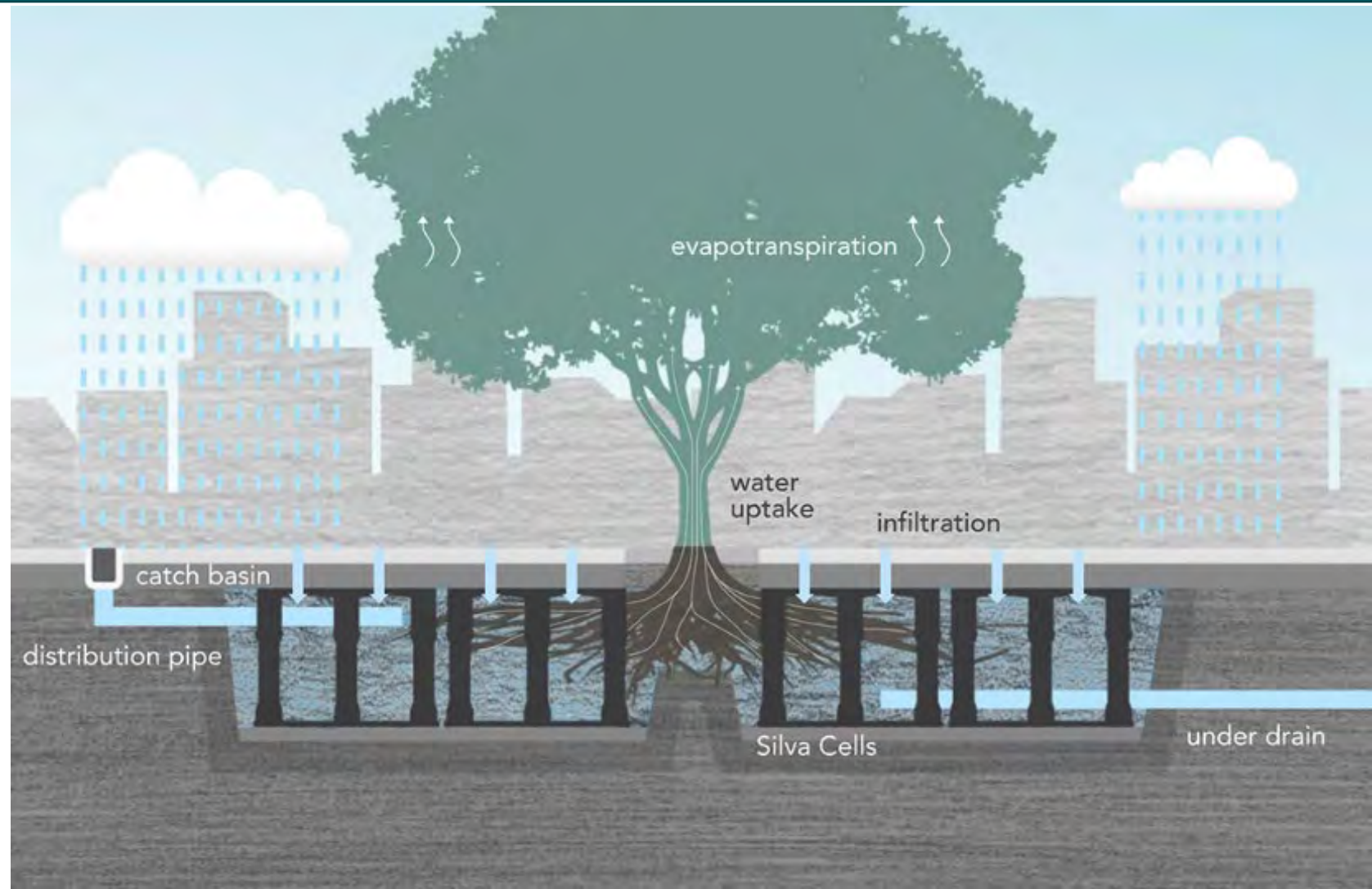




Design Elements

Trees

- Evaluation of existing trees by City Forestry
- **New trees planted in silva cells or other enhanced soil environment**
- Integrated stormwater management



Planter landscape – native grasses

Side-oats Grama



Little Bluestem



Marsh Bluegrass



Eastern Star Sedge



Pennsylvania Sedge



Gray's Sedge



Big Bluestem



Bottlebrush Grass



Paving Material

- Granite - Match circle and other State Street locations
- Pavers
- Concrete
 - Not using the exposed aggregate concrete
 - Natural Bark and Gray
 - Colors used on 700-800 blocks of State St. and MLK Jr. Blvd.



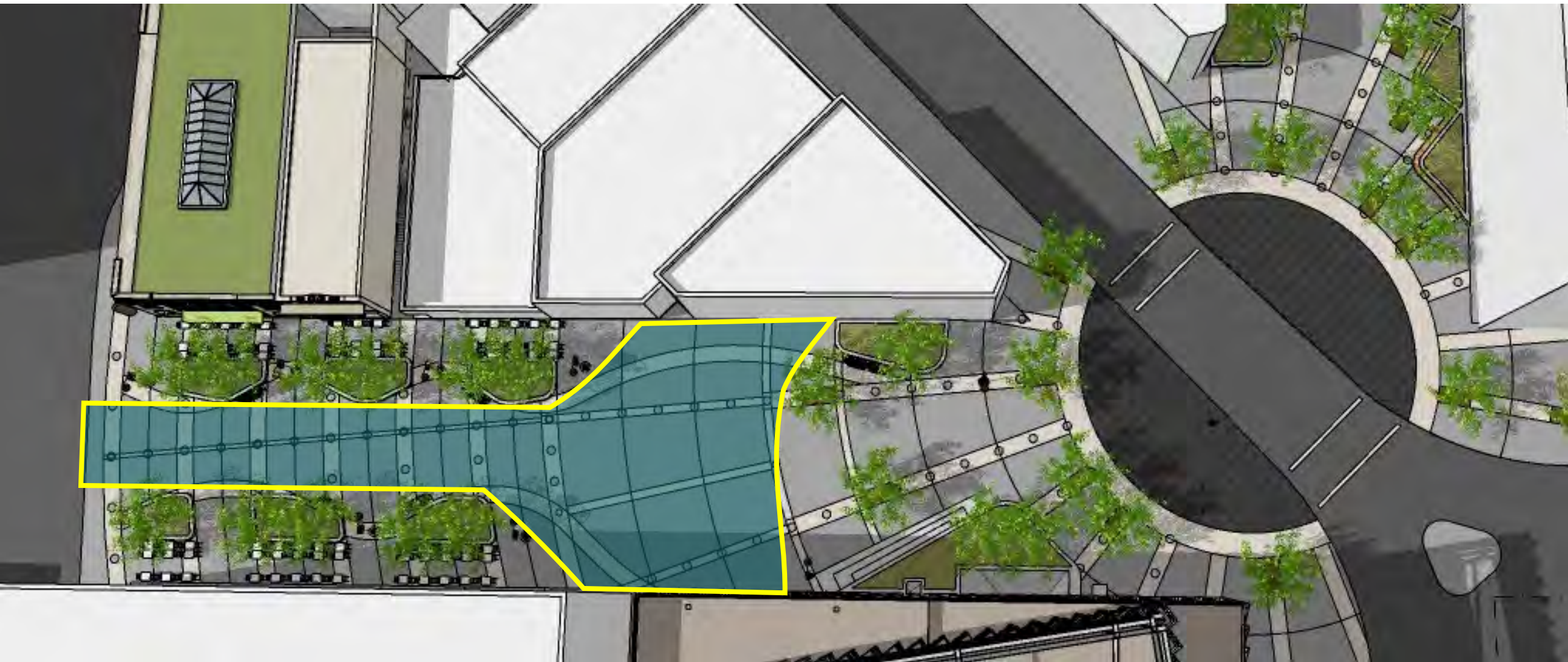
Lighting – in progress/next step

Three levels of lighting

- Lighting for Safety – tall pole fixtures
- Pedestrian Scale Lighting
 - Pedestrian Scale Lights
 - Bollards
- Decorative/ accent lighting
 - Under bench lighting
 - In-ground lighting
 - Accent lighting
 - Art lighting

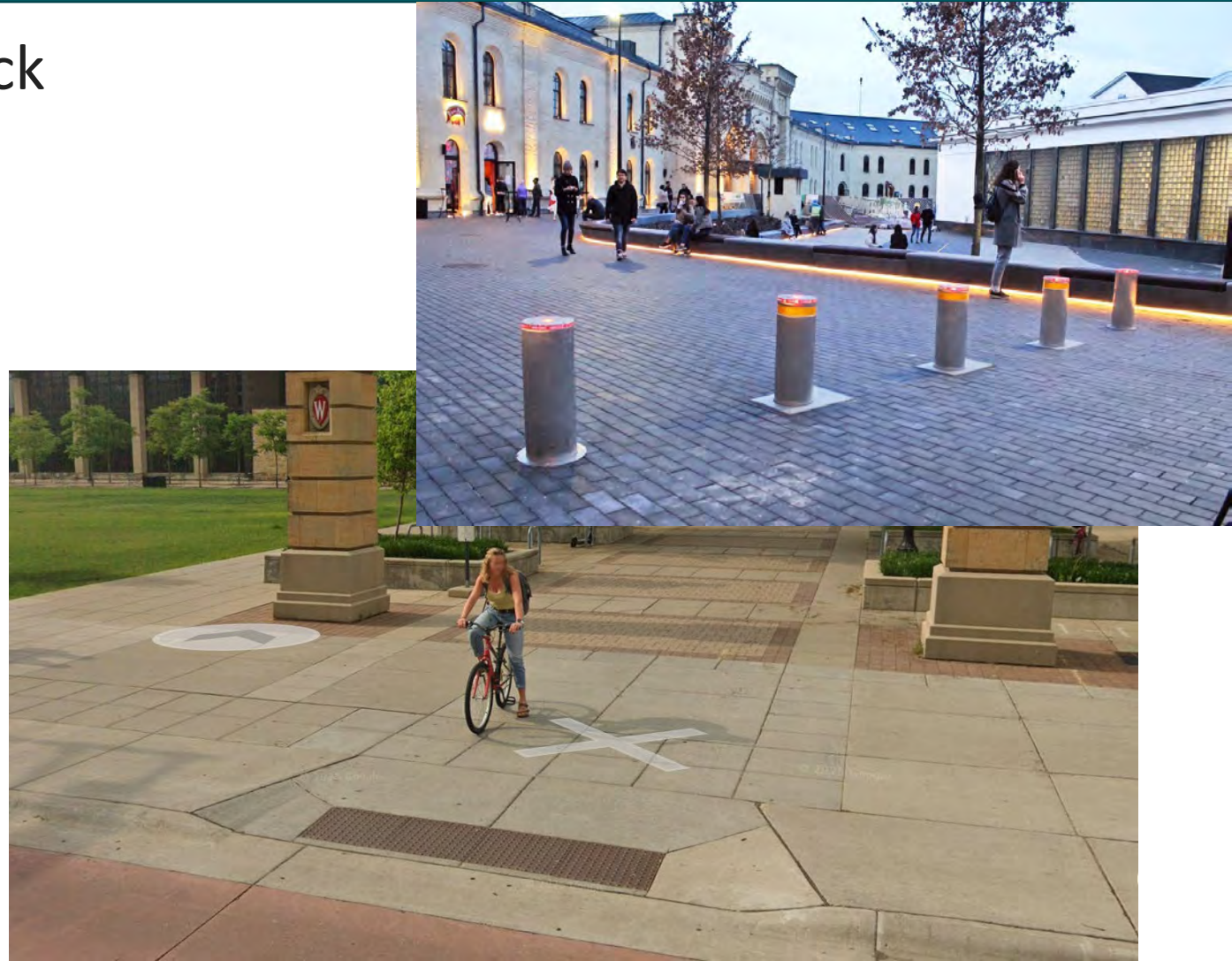


Vehicular Access



Vehicular Access – next step

- Designs reflect anticipated truck turning movements on Mifflin
- Details unknown for Veterans Museum site
- Low-profile curb to outer loop
- Retractable bollards could be considered



Seating Options

- Social Stair
- Bench Swings
- Planter edges



Public art - existing

- Concept does not envision Forum of Origin remaining in the space
- If final design does not incorporate sculpture, City will consult with artist and find appropriate new location
- Will also relocate William Turnbull's State Screen



Public art – next steps

actualsize

Gail Simpson and Aristotle Georgiades



Public art – next steps

actualsize

Stone Horse Green

Stone Horse Green is the site of a former livery stable in Middleton WI.



Sad Yeti

Installed in Law Park, Madison WI for "Winter is Alive 2021"

Public art – next steps

What we have heard:

- Interactive art
- Playful, colorful to attract families / children
- Integrated lighting, colored lighting
- Not “plop art” statue/sculpture



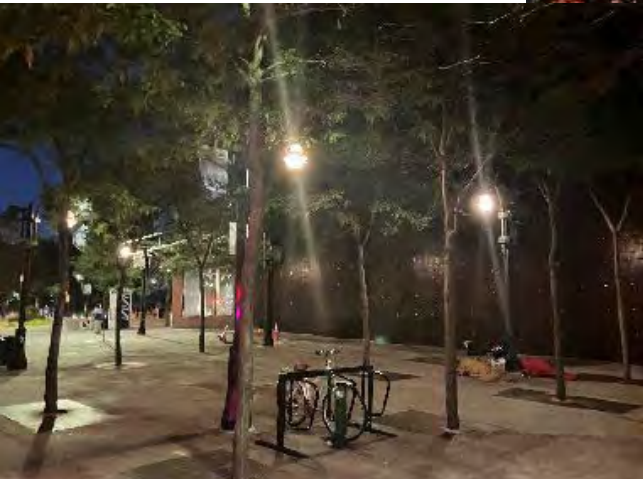
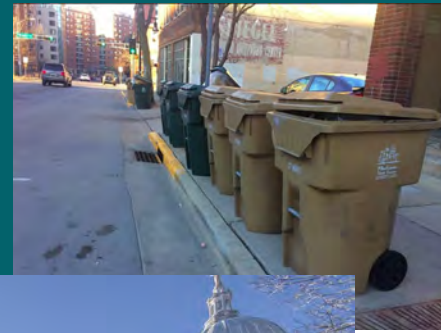
- What would you like to see? Experience?



Programming Preview

Day in the Life of the Top of State Street

- Seasonal
- Weekday vs Weekend
- 24 Hour cycle



Types of Existing Programming

- Publicly managed – Vending Coordinator:
 - Food Carts
 - Tabling
 - Craft Vending
 - Top of State Vending Overlay District
 - Sidewalk Cafés



Types of Existing Programming

Street Use Permit Process for Private Events

- Music
- Large Events
- Runs & Parades
- Markets
- Other BID Programming

BID Ambassador Booth



Anticipated Schedule and Next Steps

April
2024
Kickoff
meeting



January
2025
Design
issues
meeting



June
2025
Concept
design
meeting



Oct.
2025:
Design
revisions
meeting

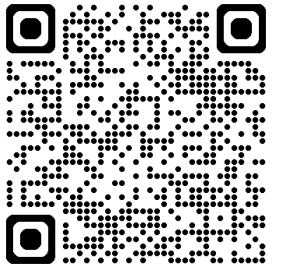


Q4 2025:
Programming
and public art
meeting



Q1 2026:
Final
design
meeting

Shameless Plug - Downtown Area Plan



Guide growth and change in the Downtown in the coming decades

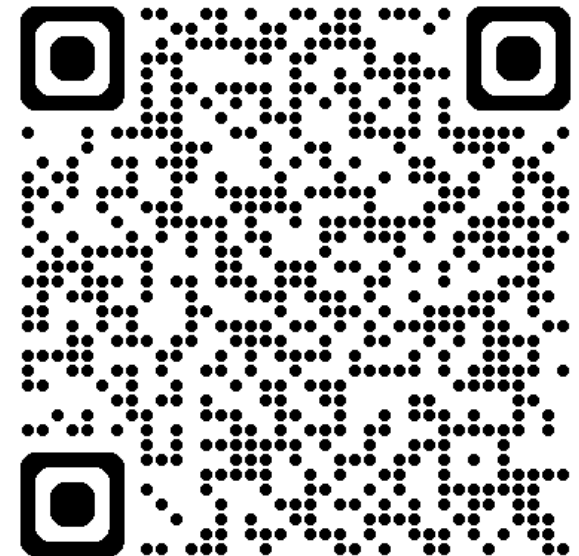
Phase 1: Issues, Opportunities, and Goals Fall 2025 - Winter 2026	Phase 2: Initial Draft Recommendations Winter 2026 – Fall 2026	Phase 3: Draft Plan, Plan Review and Approval Process Winter 2027 - Spring 2027
--	---	--



Questions

- Reaction to the current design concept?
- What do you like/not like?
- Anything missing?
- How would you use this space?
- Ideas about public art?

https://www.surveymonkey.com/r/MifflinPlaza_100625



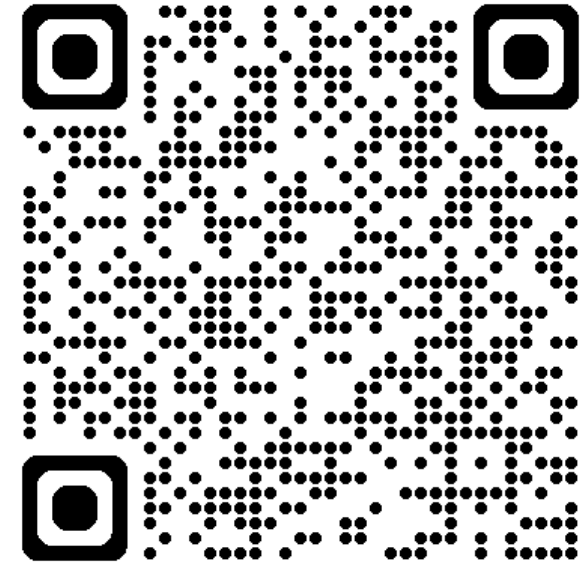
Thank you!

Contact:

Dan McAuliffe

dmcauliffe@cityofmadison.com

608-261-9676



www.cityofmadison.com/dpced/planning/mifflin-plaza-redesign/3942/