

NOTICE OF PUBLIC MEETING

Nelson Neighborhood Development Plan Update

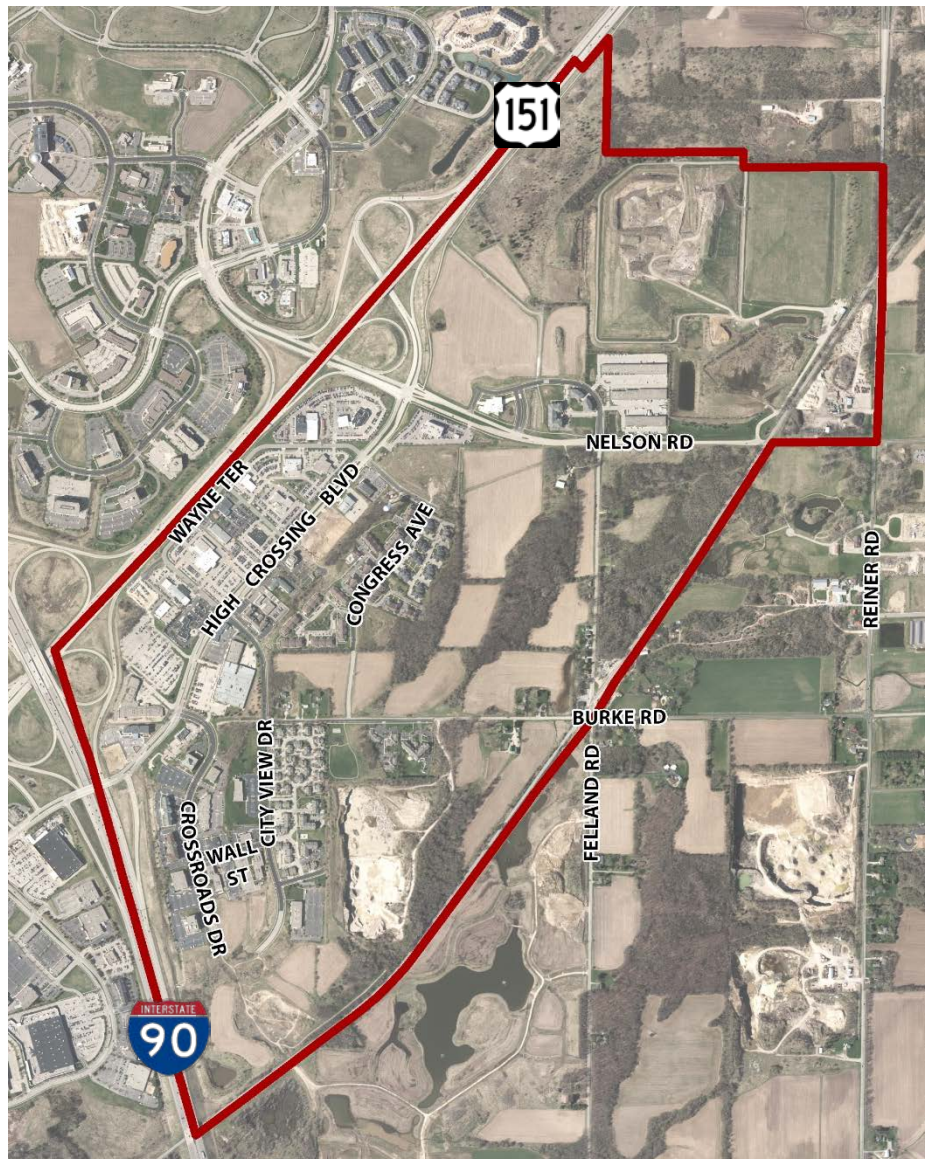
The City of Madison has initiated a process to update the Nelson Neighborhood Development Plan (NDP). NDPs are used to guide future development within a given area, and include recommendations regarding land use, transportation, and extension of public utilities and services. The Nelson Plan covers approximately 1,000 acres generally bounded by Interstate 39/90/94, US Highway 151, the City of Sun Prairie boundary, and the Wisconsin & Southern railroad corridor (see map below).

An initial public meeting to introduce the planning process is scheduled for:

Tuesday, October 23rd
6:30pm

Town of Burke Municipal Building
5365 Reiner Road, Madison, WI

The meeting will include a brief staff presentation at 6:45pm on background information and an overview of the issues to be addressed. However, the primary purpose of the meeting is to provide an opportunity for residents and property owners to ask questions and provide initial input.



Nelson NDP area shown in red at right.