

NORTHEAST AREA PLAN OPEN HOUSE



Agenda:

6:02-6:05	Welcoming/Housekeeping items by Planning team
6:05-6:08	Mayor welcoming remarks
6:08-6:11	Planning – Northeast Area Plan
6:11-6:14	Parks - Park Development Plans
6:14-6:17	Library – Reindahl Park Imagination Center
6:17-6:20	Metro - Network Redesign
6:20-6:23	Engineering - Flood Inundation Study
6:23-6:26	Planning – Airport Noise
6:26-6:29	Water Utility - Well 15 PFAS Treatment Project
6:29-6:32	Community Development Div. - Temp / Permanent Shelters
6:32-6:35	Clerk's Office - Election Services & Polling Places
6:35	Presentation wrap-up remarks followed by tabling

WELCOME

Planning Division

Northeast Area Plan

Guide physical changes in the coming years

- Land use and future growth
- Transportation
- Parks and open Space
- Stormwater management, utilities and public facilities



Northeast Area Plan

Planning Division

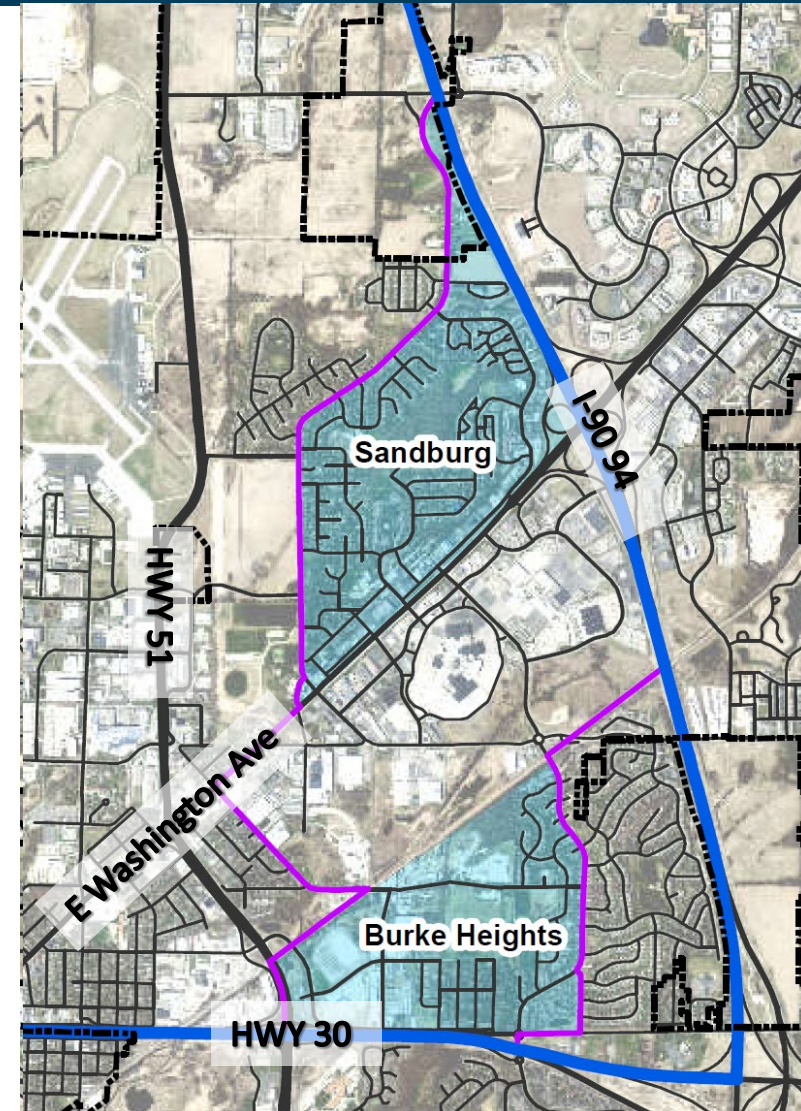


Community Action Plan

- Sandburg and Burke Heights/Thompson areas
- \$200,000 allocated for each area

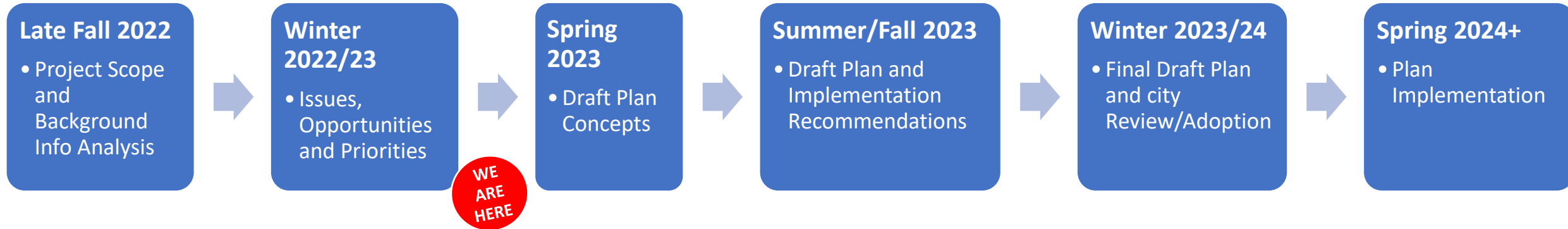
What we have heard

- Affordable housing for both renters and buyers
- Concerns about homelessness
- Better pedestrian access along E Washington Ave
- Pedestrian and bike improvements across major corridors and parks
- Improve E Washington/HWY 51 intersection
- More tree canopy in and around East Towne mall
- More local businesses (restaurants, shops, etc)



Northeast Area Plan

Planning Division



What is next?

- Initial plan recommendations based on community input
- Continue working with the business community and community navigators

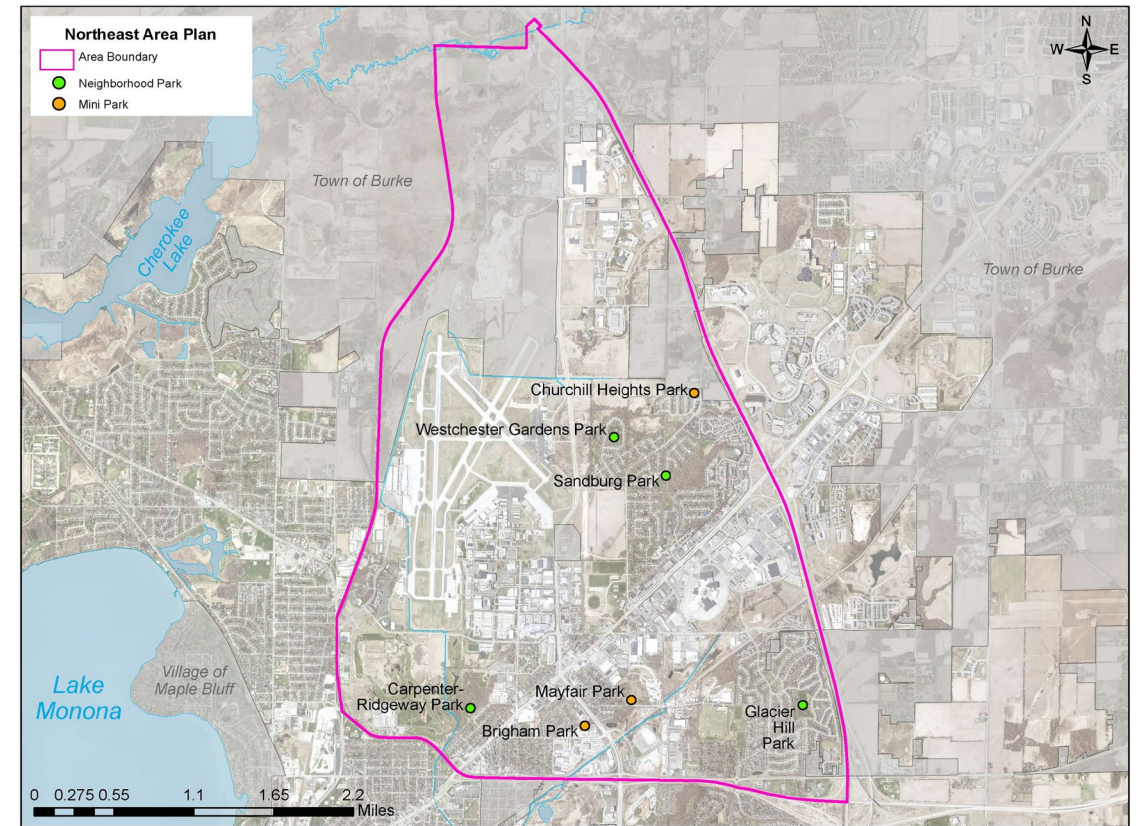
How can residents participate in the decision making process?

- Subscribe to our email list to get notifications and project updates
- Add your thoughts to the commenting map
- Take the community priorities survey

Northeast Area Plan

Park Development Plans

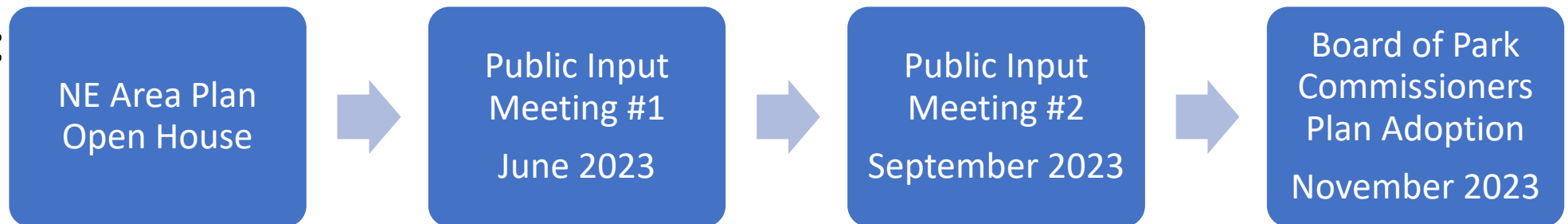
- Neighborhood and Mini Parks
 - Brigham Park
 - Mayfair Park
 - Carpenter-Ridgeway Park
 - Churchill Heights Park
 - Glacier Hill Park
 - Sandburg Park
 - Westchester Gardens Park



Northeast Area Plan

Why in this area?

- Using the new area planning framework to review existing park uses, conditions, and receive input on both existing and desired amenities
- Parks classified as Community Parks will have separate planning processes and timelines as needed.
- Sycamore Park Master Plan is in-progress.
- Reindahl Park Master Plan was adopted in January 2023
- Timeline:



play
**MADISON
PARKS**

What is next?

- Parks will hold a public input meeting to discuss plans for the Neighborhood and Mini Parks in the planning area. The meeting date is to be determined.

How can residents participate in the decision making process?

- Attend public input meetings
- Contact me with questions or concerns
 - akaniewski@cityofmadison.com
 - 608-261-4281
- Visit the project page
 - <https://www.cityofmadison.com/parks/projects/park-development-plans-northeast-area>



Imagination Center at Reindahl Park

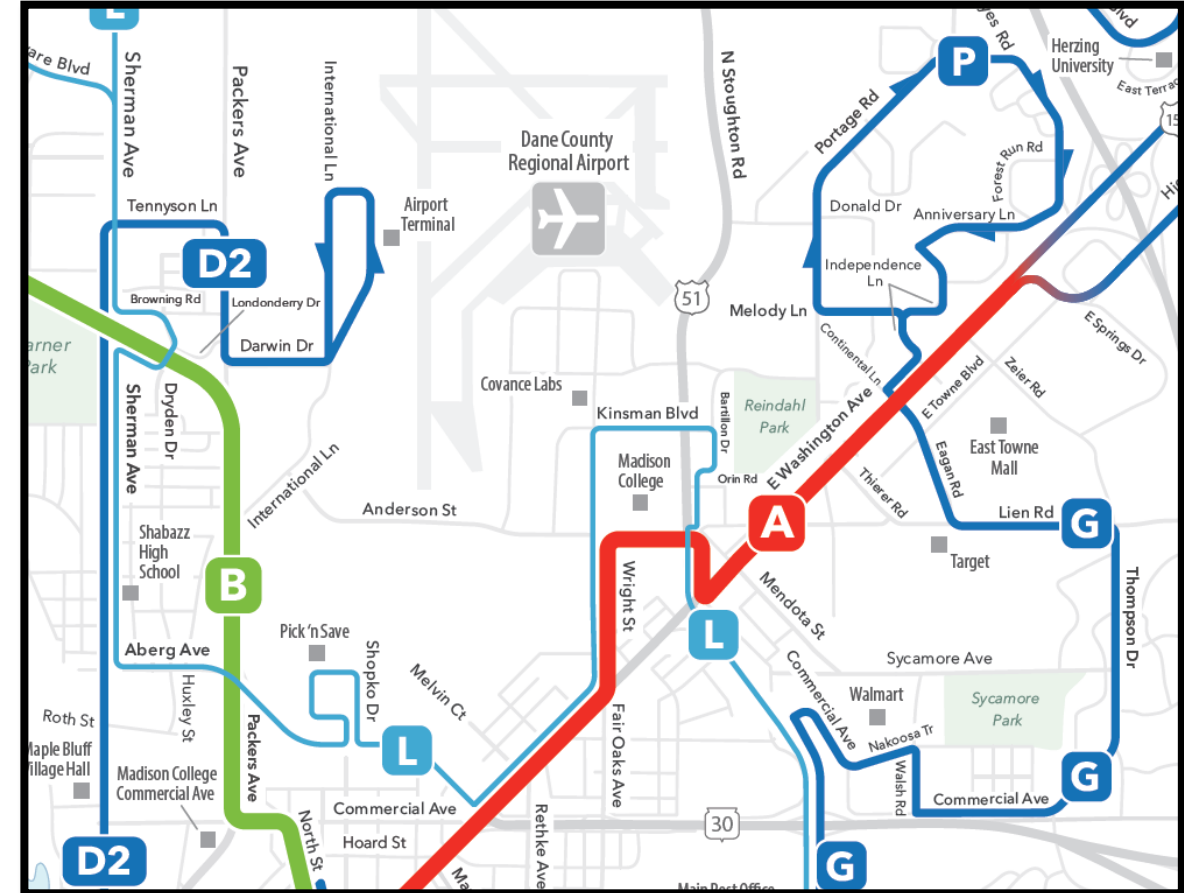
- New library and park pavilion
- Nearing end of schematic design
- Projected to open April/May 2026
- Total area of 17,500 square feet
 - 4,500 SF Pavillion
 - 13,000 SF Library
- Total collection size of 40 thousand items
- New landscaping and outdoor community spaces
- Variety of public spaces
 - Reservable event space, meeting rooms, play space, quiet reading, and more!



Network Redesign

Description

- **June 11th, 2023** Network Redesign (new bus routes)
- Routes such as the 6, 20, 23, 26, 30, and 36 will be replaced.
- BRT will not be in place until late in 2024

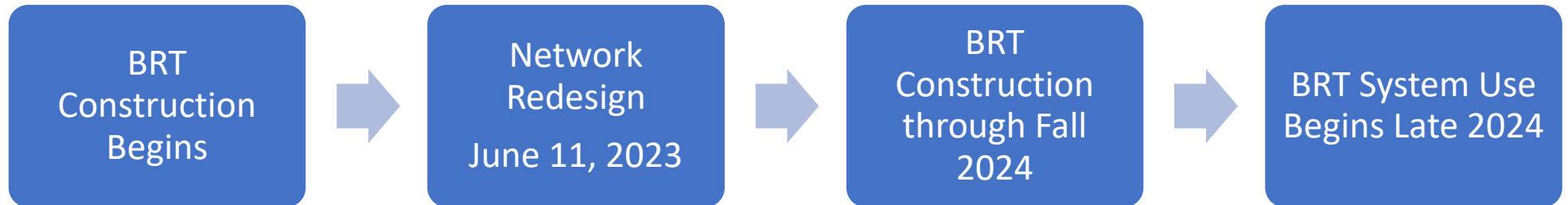


Northeast Area Plan

Network Redesign and Bus Rapid Transit (BRT)

- Network Redesign updates bus system
 - Route A to become the BRT East-West Corridor
 - First construction for the Northeast area begins on Anderson St in spring of 2023

Timeline:



What is next?

---Informational Public Meeting for East Side construction
(Blair Street to East Towne)

- April 6th at 6:00pm (Webinar registration)

How can residents participate in the decision making process?

- brtconstruction@cityofmadison.com

(608) 622-9659



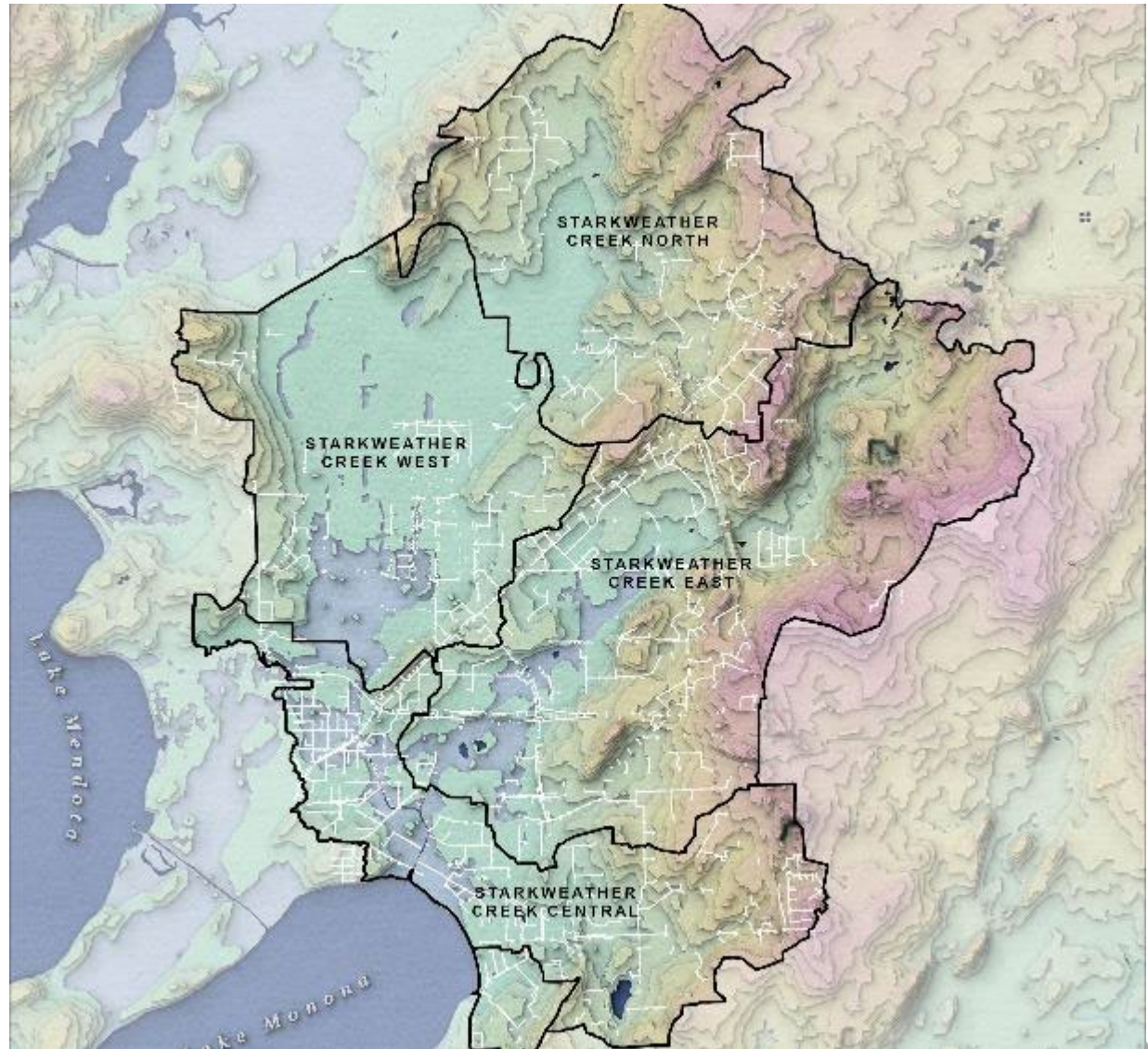
Starkweather Creek / Olbrich Gardens Watershed Study

March 29, 2023

Starkweather Creek Watershed

What's a watershed?

- ▶ A watershed is the area of land that drains precipitation (rain, snow, etc.) to a common low point, such as an inlet, stream, or lake.
- ▶ Determined by surface terrain and underground pipe system (storm sewers). Note that storm sewers are not the same as sanitary sewers.



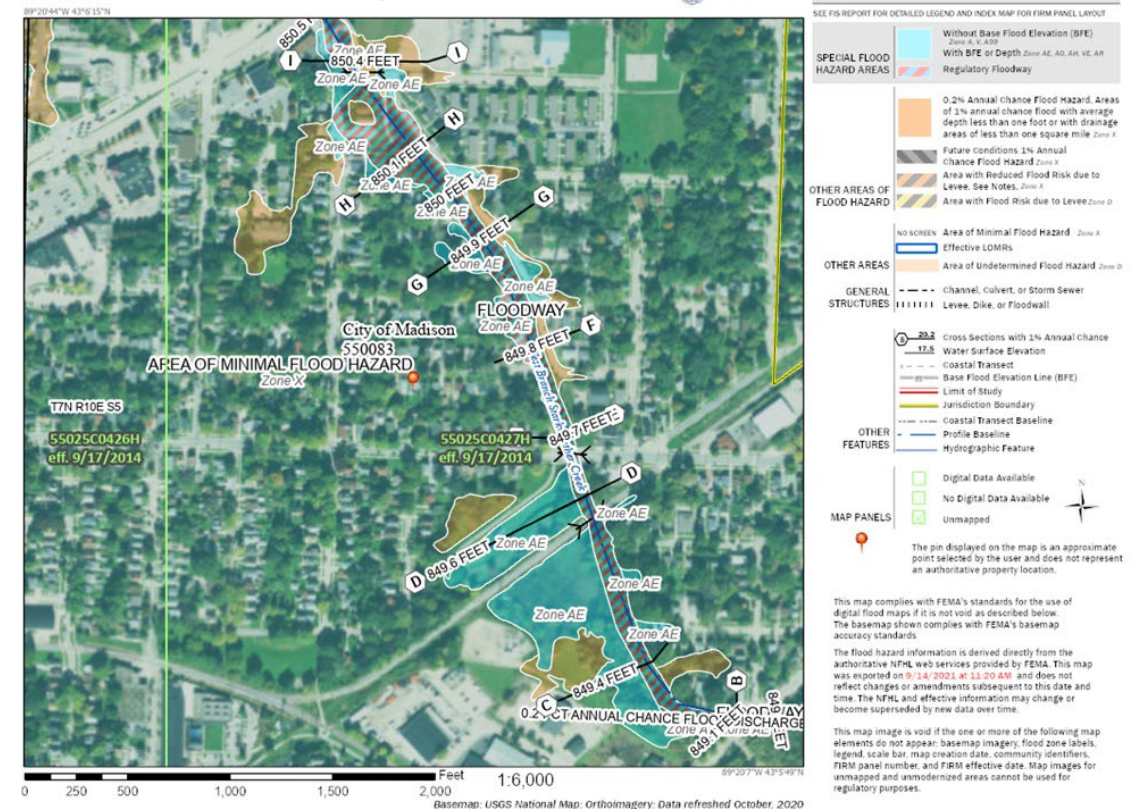
CITY OF MADISON



Floodplains mapped by state (DNR) and federal (FEMA) government

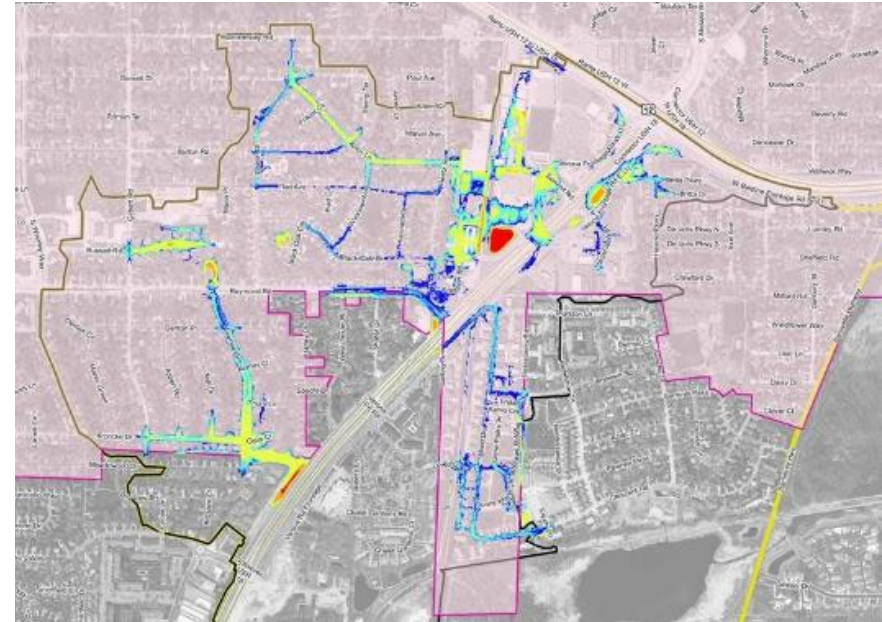
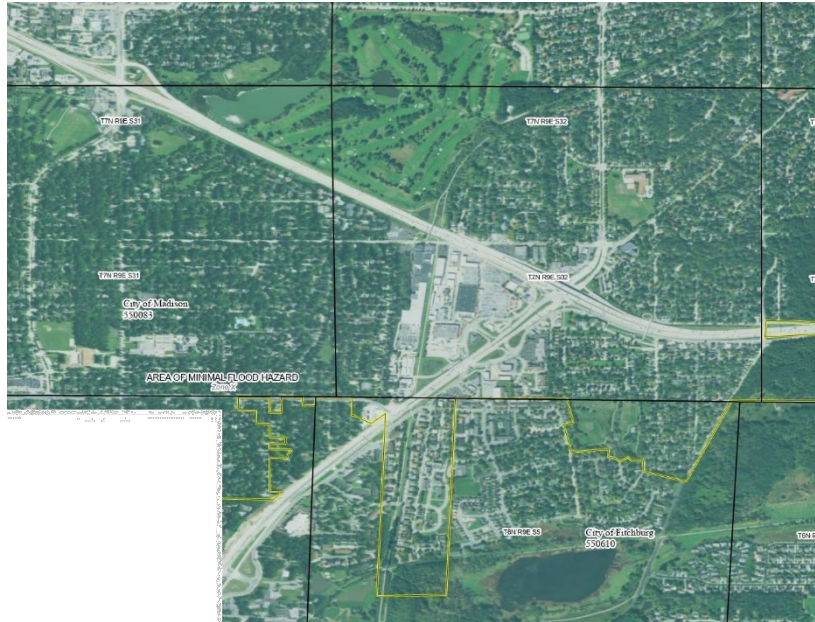
- ▶ Historically, floodplains have been mapped for flood risks associated with midsize and large rivers, lakes and creeks
- ▶ Flooding in 2018 and other recent years showed there are areas of high flood risk outside of officially mapped floodplains

National Flood Hazard Layer FIRMette



Flooding occurs outside of mapped floodplains

- ▶ Recent flooding and analysis shows there are areas of high flood risk outside of officially mapped floodplains
- ▶ Flood risk because of undersized stormwater drainage systems is typically not mapped by FEMA



Watershed Study Targets

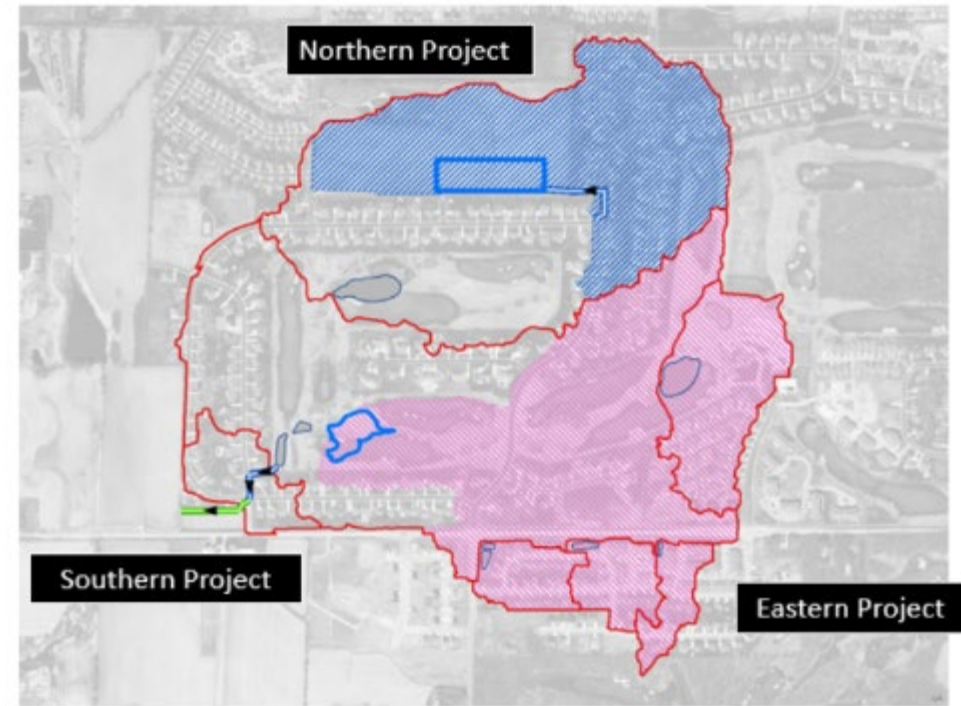
- ▶ Find out why flooding happens in certain locations
- ▶ System goals
 - Eliminate flooding from storm sewer during storms with a 10% chance of occurring each year (4" of rain in a day)
 - Cars can pass down the middle (highest) part of the street during a storm with a 4% chance of occurring each year (~5" of rain in a day)
 - Structure and major roadway damage is eliminated for storms with a 1% chance of occurring each year (6.5" of rain in a day)
 - Flooding extents known during storms with a 0.2% chance of occurring each year (8.96" of rain in a day)



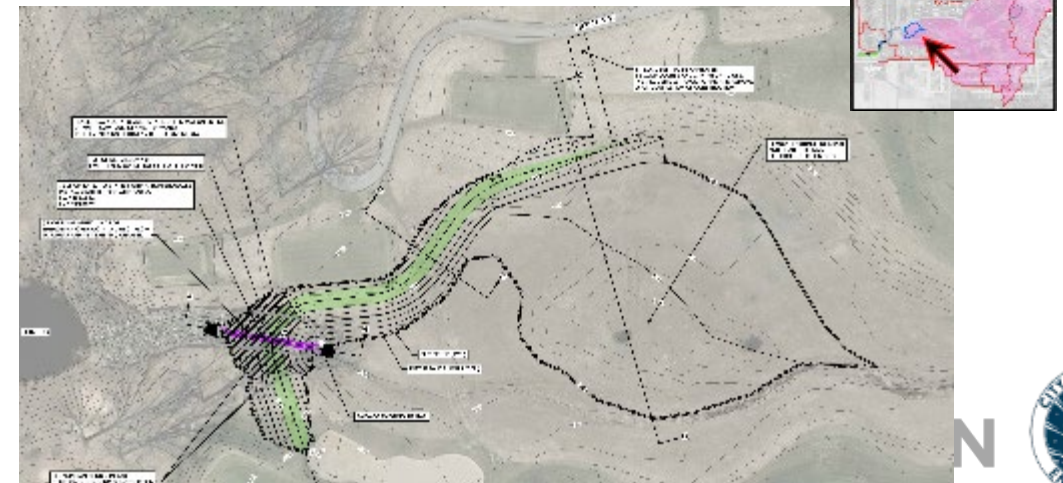
Watershed Study Targets

- ▶ Find out why flooding happens in certain locations
- ▶ System goals
- ▶ Test Solutions
 - ▶ Lots more detail gets added in final design
 - ▶ Will help prioritize and budget future projects


This study is focused on water quantity during flood events, not water quality, though there are many past and ongoing efforts related to water quality improvements in the Starkweather Creek watershed



Above: Model-Level Solution Evaluation
Below: Design Level Detail



Developing solutions



Create
Drainage
Model

Identify
Flooding
Impacts

Develop
Engineering
Solutions

Prioritize
& Budget

- ▶ Must be holistic
- ▶ Not “move the problem elsewhere”
- ▶ Account for climate change
 - ▶ Look at **trending increases** in storm frequency and intensity
- ▶ Consider long term maintenance needs
- ▶ Provide benefits relative to cost

Developing solutions

**Create
Drainage
Model**

**Identify
Flooding
Impacts**

**Develop
Engineering
Solutions**

**Prioritize
& Budget**

What are some general options?

- ▶ Improve pipe and/or inlet capacity
- ▶ Safe overflow paths
- ▶ Reroute flow
- ▶ Increase storage / detention
- ▶ Flood-proof buildings
- ▶ Local landscaping / grading
- ▶ Solutions on private property to structures or land



CITY C



Contact Information & Resources

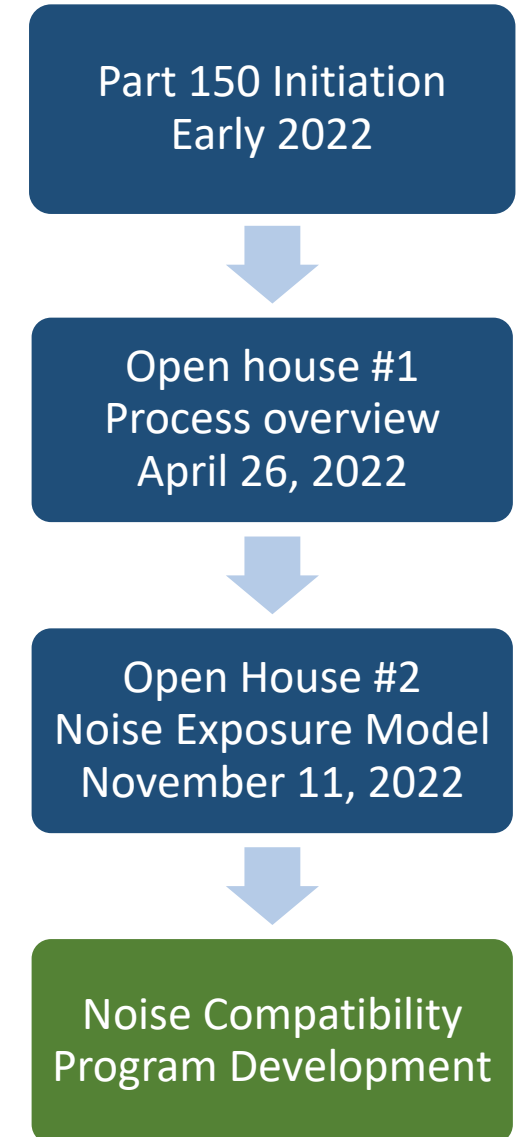
- Project Manager: Phil Gaebler, pgaebler@cityofmadison.com
- Public Information Officer: Hannah Mohelnitzky, hmoelnitzky@cityofmadison.com
- Project Webpage: www.cityofmadison.com/StarkweatherCreekWatershed
 - Engagement Survey
 - Sign-up for project email updates on the website
 - Report flooding, past or current on the Report Flooding form
 - Learn ways to protect your property from flooding with on-site fixes
- New Flooding Website: www.cityofmadison.com/flooding
- Everyday Engineering Podcast
- Facebook – City of Madison Engineering
- Twitter – @MadisonEngr



Airport Noise Mitigation Study – Planning



- Part 150 - FAA program to allocate noise mitigation funding to airports
- Dane County Regional Airport is project sponsor
 - City is not leading process
- Part 150 Components:
 - Noise Exposure Model
 - Noise Compatibility Program



Airport Noise Mitigation Study

- Noise Exposure Model



Sound profiles
of aircraft

+ Quantify of
flights +



Figure 4-11. Modelled Flight Tracks for F-35A at Travis Field

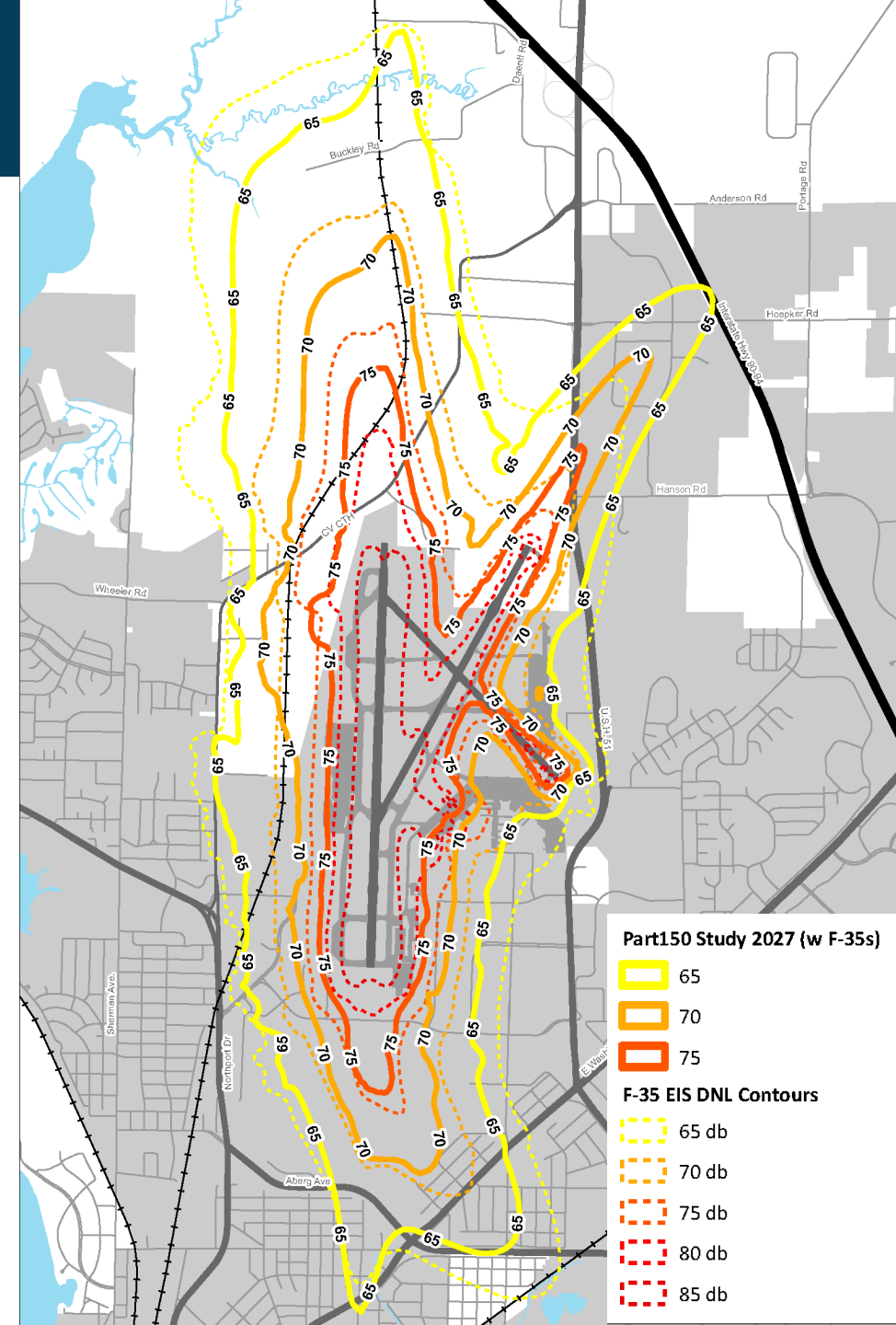
Flight paths



Figure W12.5-2
Proposed DNL, Noise Contours and Land Use
within the Vicinity of Dade County Regional Airport

- Revised flight projections

- EIS: 7,182 F-35 and F-16 operations annually
- Part 150: 4,202 F-35 operations annually
- Part 150: +47% commercial flights (2019)



Airport Noise Mitigation Study – Planning



- Noise Compatibility Program
 - Airport improvement or operational changes
 - Land Use Compatibility (soundproofing)

Land Use	<65 dB DNL	65-70 dB DNL	70-75 dB DNL	75-80 dB DNL	80-85 dB DNL	>85 dB DNL
Residential						
Residential, other than mobile homes and transient lodgings	Y	N(1)	N(1)	N	N	N
Mobile home parks	Y	N	N	N	N	N
Transient lodgings	Y	N(1)	N(1)	N(1)	N	N
Public Use						
Schools	Y	N(1)	N(1)	N	N	N
Hospitals and nursing homes	Y	25	30	N	N	N
Churches, auditoriums, and concert halls	Y	25	30	N	N	N
Governmental services	Y	Y	25	30	N	N
Transportation	Y	Y	Y(2)	Y(3)	Y(4)	Y(4)
Parking	Y	Y	Y(2)	Y(3)	Y(4)	N
Commercial Use						
Offices, business and professional	Y	Y	25	30	N	N
Wholesale and retail - building materials, hardware and farm equipment	Y	Y	Y(2)	Y(3)	Y(4)	N
Retail trade - general	Y	Y	25	30	N	N
Utilities	Y	Y	Y(2)	Y(3)	Y(4)	N
Communication	Y	Y	25	30	N	N

NCP alternative
development
and refinement



Q4 2023:
Open house and
NCP finalization



Q1 2024:
Submit NCP
to FAA



Noise
Compatibility
Program Action

www.msnairport.com/about/ecomentality/Part-150-Study

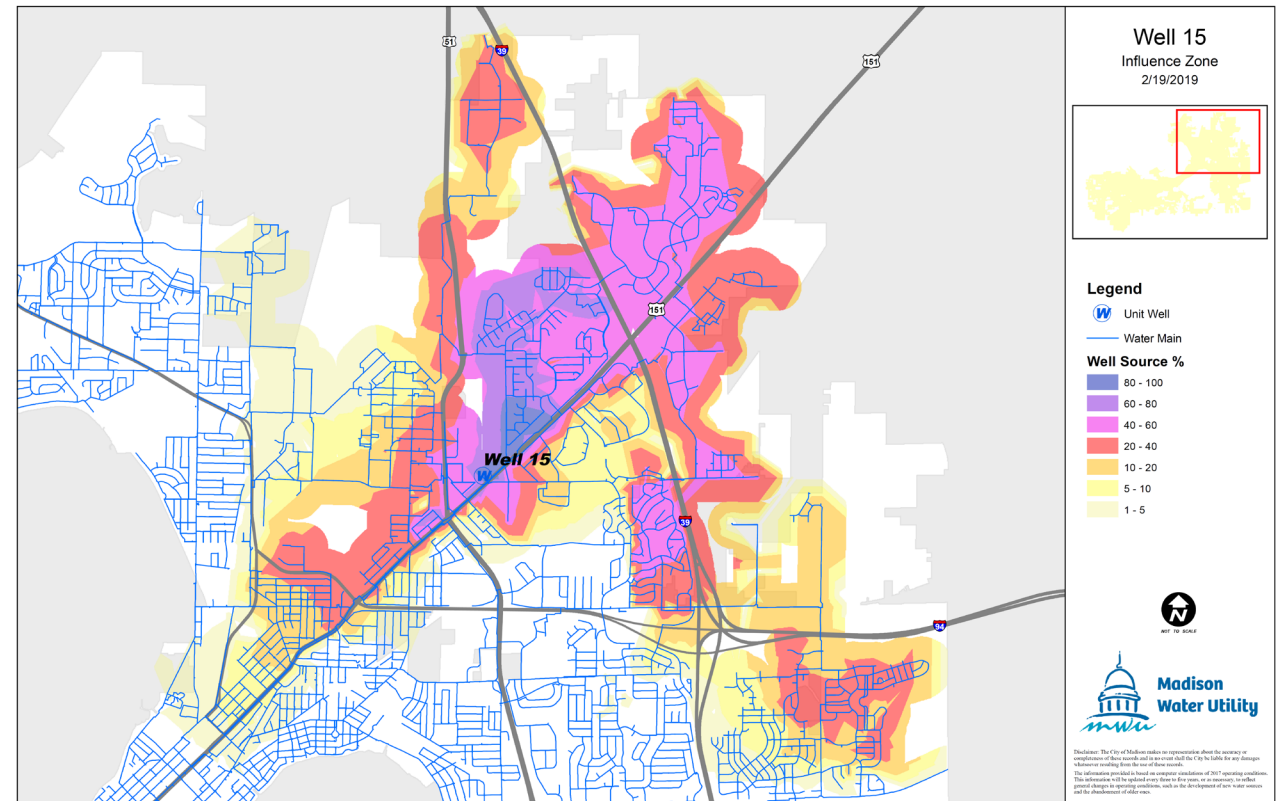
Well 15 PFAS Treatment Project

Well 15

- Workhorse on Madison's Eastside
- History of organic contaminants
- Currently offline due to PFAS

PFAS

- Group of human-made chemicals
- Common in consumer goods
- Harmful to health at low levels



Well 15 PFAS Treatment Project

Why Well 15?

- Only Madison well to exceed newly proposed drinking water standards for PFAS
- Held two public meetings
 - Received community support to advance project
 - Presented treatment options & cost estimates

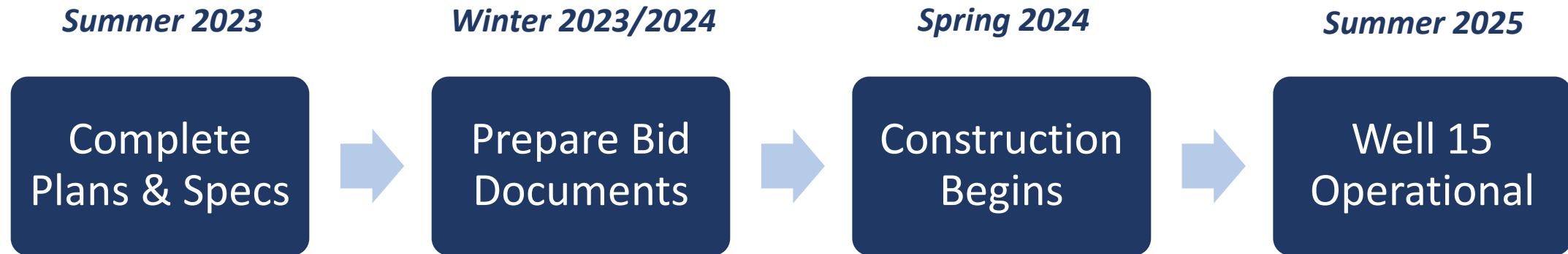
How Can Residents Participate In Process?

- Testify at monthly Water Utility Board meetings
- Attend project-specific public meetings
- Submit comments – water@madisonwater.org



Well 15 PFAS Treatment Project

Timeline:



What Is Next?

- Submit application for public funding (Bipartisan Infrastructure Law) under the Safe Drinking Water Loan Program
- Continue to monitor for PFAS semi-annually at all wells and report results on our website and through the Annual Water Quality Report

MadCAP- Customer Assistance Program

What Is It?

- Program to reduce utility costs for low-income residents
- Provides eligible households a \$20 or \$30 credit on their monthly bill

Who Is Eligible?

- **Customers** earning less than 50% of the area median income
- Sliding scale (\$40,400 to \$76,100) based on household size

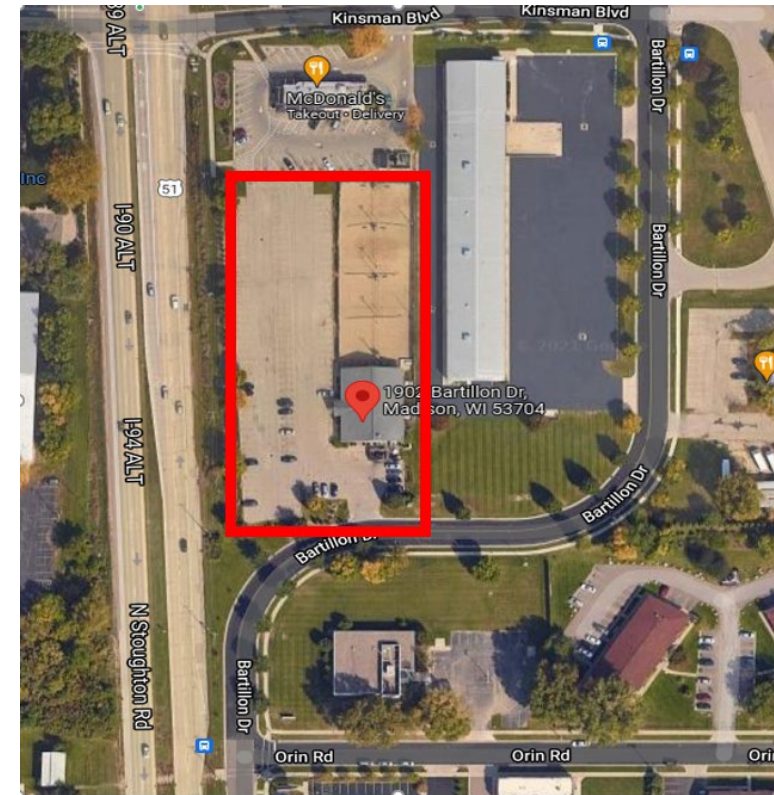
How Can I Enroll In This Program?

- Complete application and include documentation to verify your income/eligibility
- Call (608) 266-4641 or visit cityofmadison.com/water for more information



Temporary and Permanent Shelters for Men

- Historically, City has not been major player in homeless shelters
- Pre-pandemic: shelters used basements of 3 downtown churches, operated by Porchlight
- In 2020, public health concerns forced their closure & led City to set up temporary shelters:
 - Warner Park Recreation Center
 - 200 N. First Street
 - **2002 Zeier Road (current)**
- Need for permanent alternative led to 1902 Bartillion Drive proposal



1902 Bartillion Drive

Community Development



Why this location?

- City conducted multi-year site search
- Site criteria included size, availability, accessibility
- Bartillon best option available

Common Council Action To Date



Oct 2021

- Authorized the purchase of 2002 Zeier Road for use as temporary men's shelter
- Authorized the purchase of 1904 Bartillon Dr to support homeless services

Nov 2021

- Adopted 2022 Capital Budget, together City of Madison and Dane County budgets authorize up to \$9 million for shelter. [\$6 million City / \$3 million County]

April 2022

- Authorized 1902 Bartillon Dr as site for permanent shelter facility
- Authorized City Engineering to issue Request for Proposals for Architectural Design Services
- Authorized Community Development, in partnership with Dane County to issue Request for Qualifications for Shelter Operator

Common Council Action To Date



May 2022

- Authorized City Engineering to make renovations at 2002 Zeier Rd, and added funds to do so

Aug 2022

- Approved the selection of team headed by Dimension IV-Madison to provide architectural and engineering design services

Oct 2022

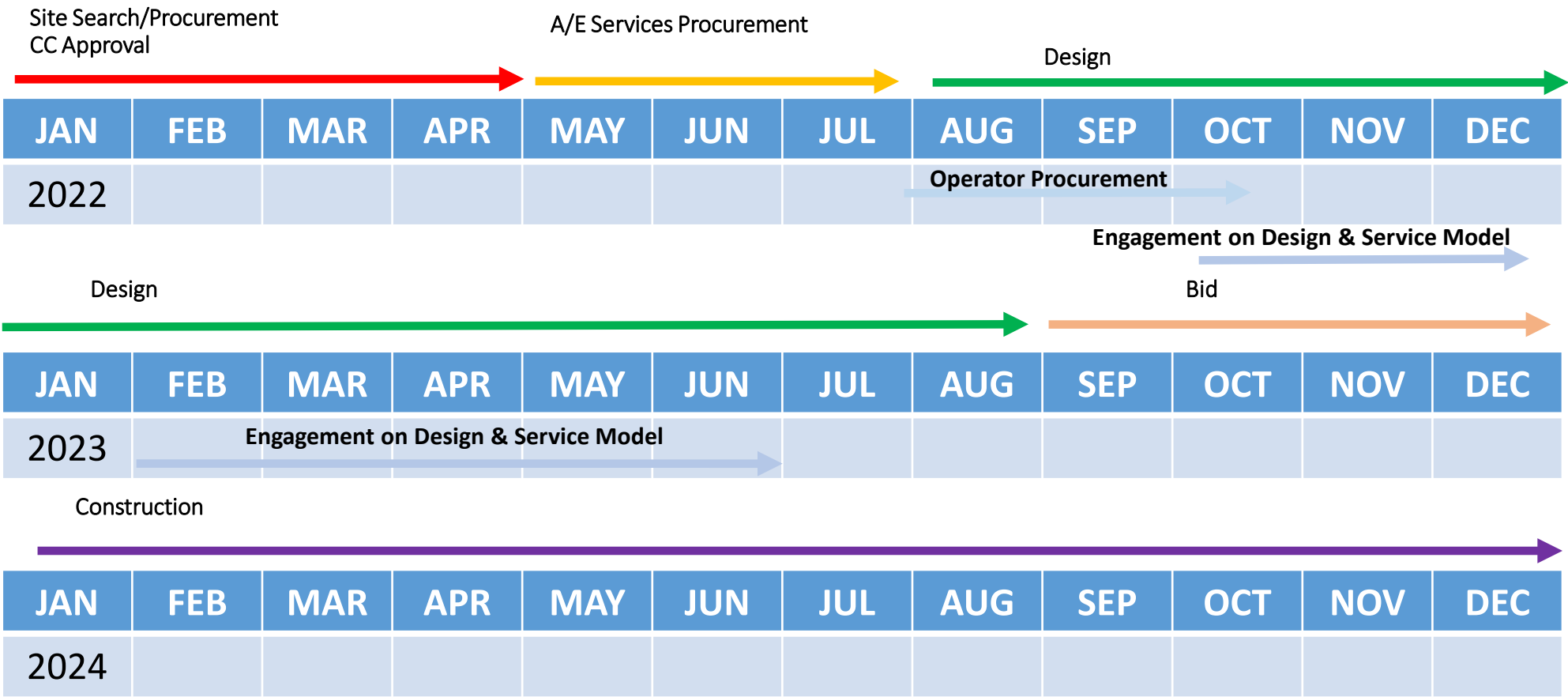
- Approved the selection of Porchlight Inc. as shelter operator
- **Project team began seeking community feedback on design and services (Trauma- Informed Design Assessment)**

Nov 2022

- Adopted 2023 Capital Budget, adding \$11 million more (from City, County and Federal grant) to cover balance of estimated \$21 million cost to build shelter

TENTATIVE

1904 Bartillon Project Schedule



Q1 2025 – TENTATIVE CONSTRUCTION COMPLETION

Current Engagement Partners

- Porchlight, Inc
- Nurse Disrupted, Inc
- Madison Street Medicine
- Kabba Recovery Services
- Catalyst for Change
- The Beacon
- City (Engineering, Community Development, Real Estate)
- Dane County Human Services
- Dimension IV Madison Design Group
- Homeless Services Board of Directors Liaison

Community Development



What is next?

- Finalize facility design and service model with community engagement
- Conduct a construction bid process

How can residents participate?

- Follow the [City's project website](#) for meeting schedules, prior meeting information and project contacts
- Participate in upcoming neighborhood public information meetings (May 2023)
- Attend the relevant Committee and Common Council meetings at various decision making points

Other Information

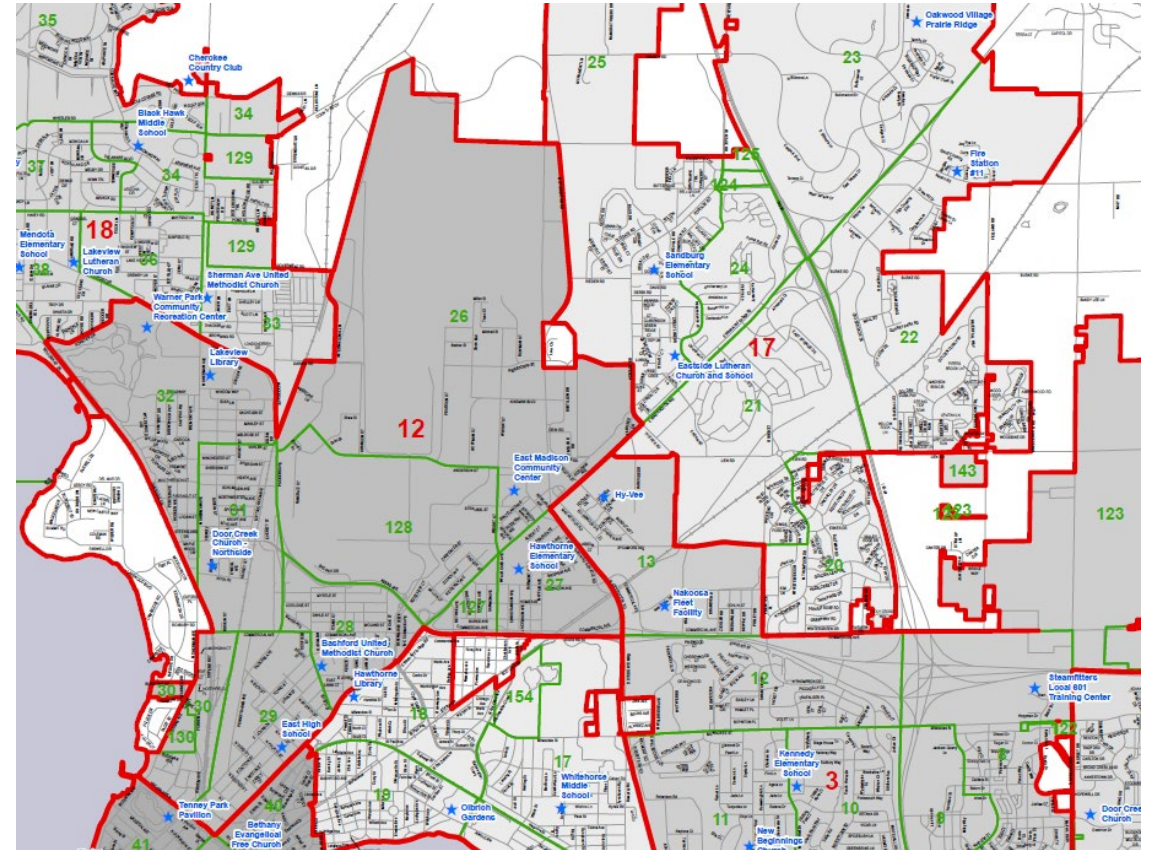


- Project Website:
- www.cityofmadison.com/engineering/projects/bartillon-shelter
- Project Contacts:
- Jon Evans (City of Madison Engineering)
- Ph: 608-243-5893
- jevans@cityofmadison.com
- Linette Rhodes (Community Development Division)
- Ph: 608-261-9240
- lrhodes@cityofmadison.com

Polling Places

Find Your Polling Place

- MyVote <https://myvote.wi.gov/en-us/>
- City Clerk's Website <https://www.cityofmadison.com/clerk/where-do-i-vote/>
- Interactive Map <https://cityofmadison.maps.arcgis.com/apps/webappviewer/index.html?id=a7e8c459f2ba415fa77bacf351a958cc>



Election Services

- Education and Outreach
- Absentee Ballot Operations
 - In-Person Absentee Voting (Early Voting)
 - Nursing Home Voting (Special Voting Deputy)
- Ballot Access and Campaign Finance
- Election Day Operations
- Post-Election Audits and Reconciling



Other Services

- Licensing
 - Environmental Health (Food and Drink, Hotel, Airbnb)
 - Liquor and Bartender Licensing
- City Committee staffing, support, and education
- Open Records
- Notary



NORTHEAST AREA PLAN OPEN HOUSE

