

Reiner Neighborhood Development Plan

January 13, 2020



Reiner Neighborhood Development Plan

Planning Area

- Town of Burke boundary on the east
- Railroad Tracks and Felland Rd on the west/north
- Thorson Road and Northeast NDP boundary on the south
- Approx. 1,480 acres
- Residential 230 Acres, 226 homes
- Sun Prairie Area School District

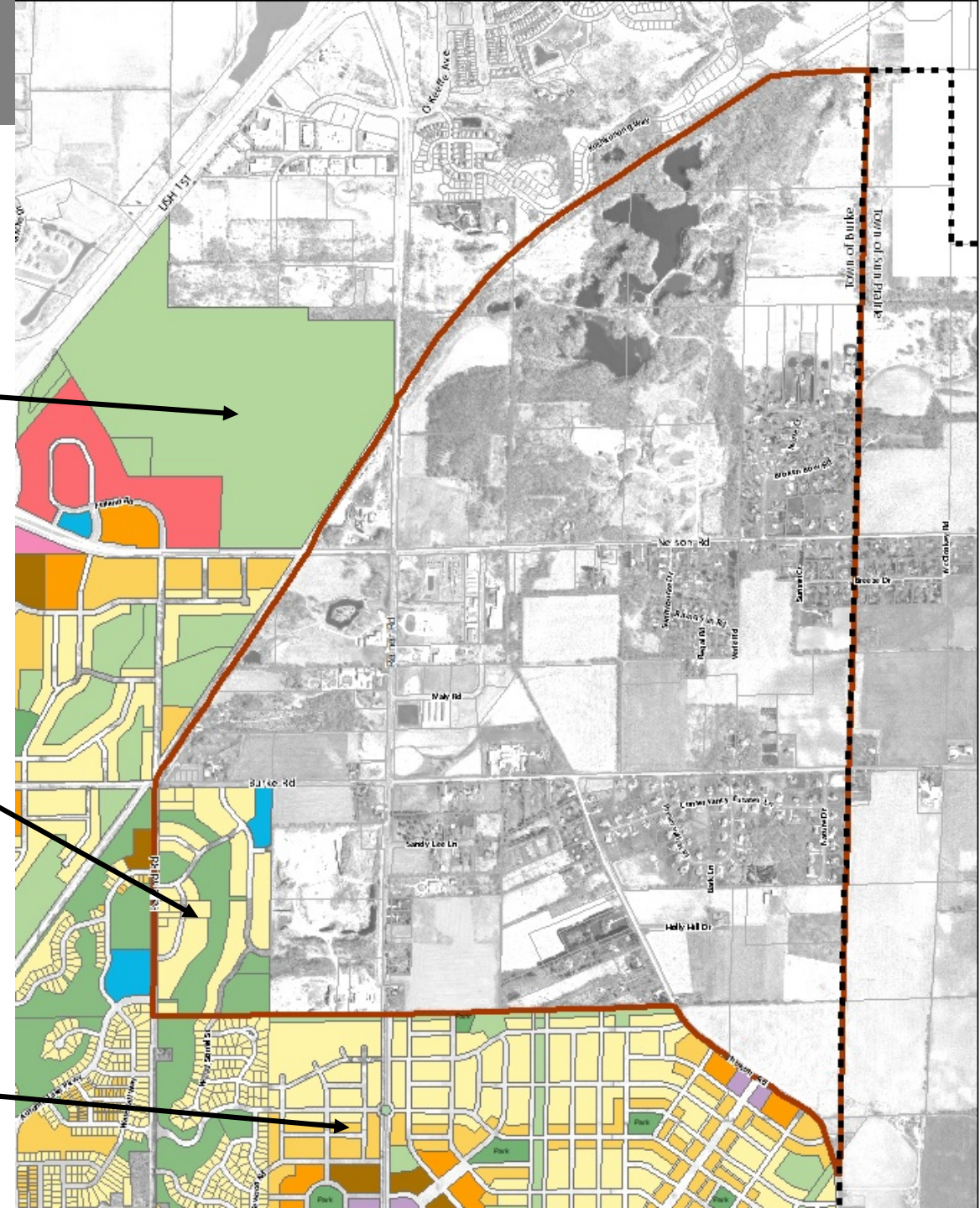


Reiner Neighborhood Development Plan

Nelson Neighborhood
Development Plan (2019)

Felland Neighborhood
Development Plan (2002)

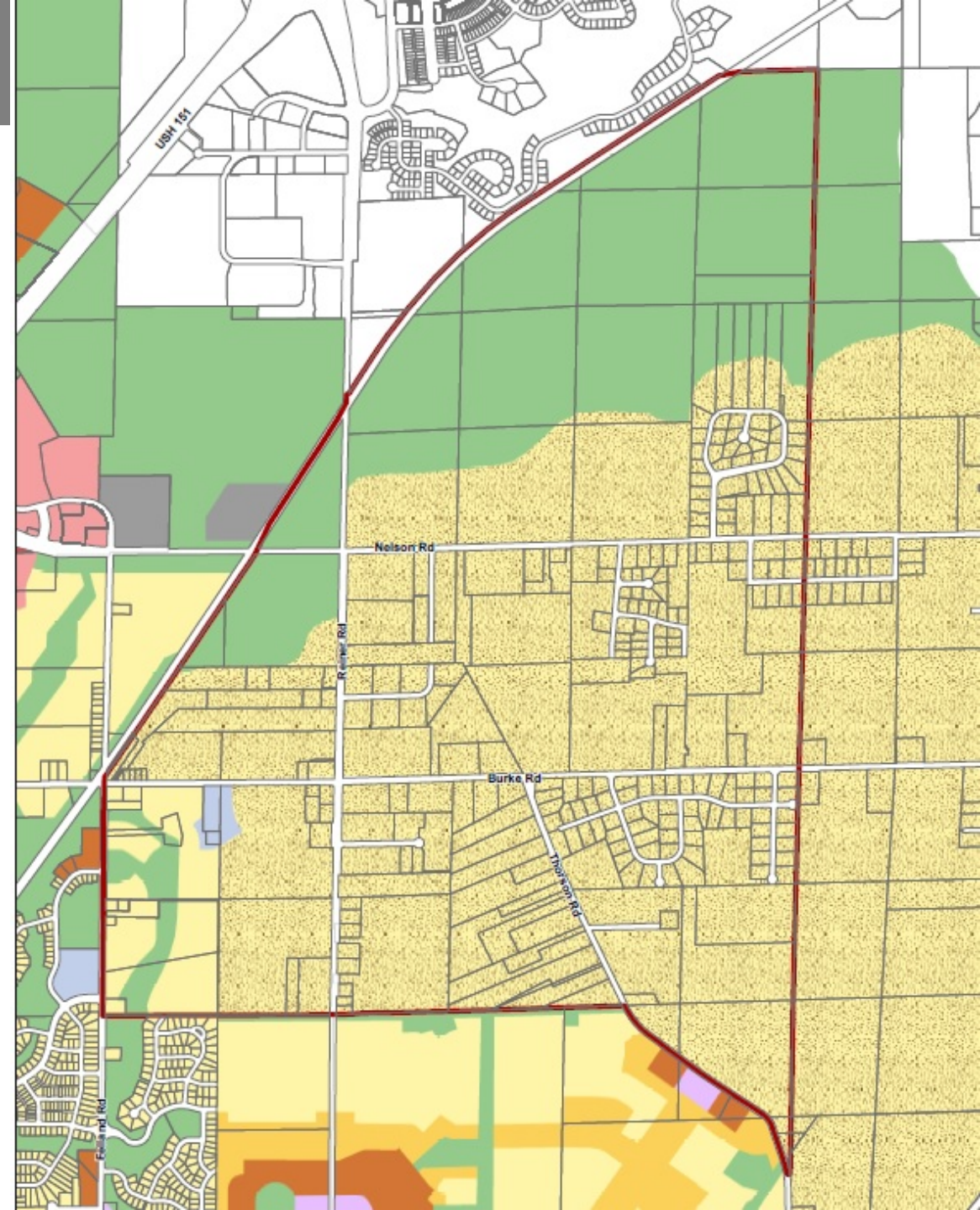
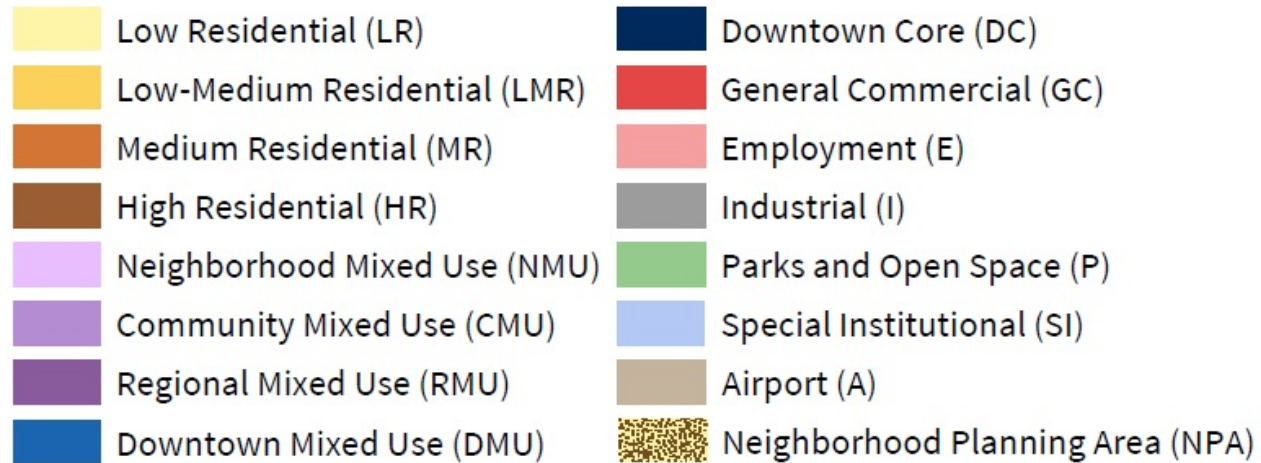
Northeast Neighborhood
Development Plan (2009)



Reiner Neighborhood Development Plan

Comprehensive Plan GFLU

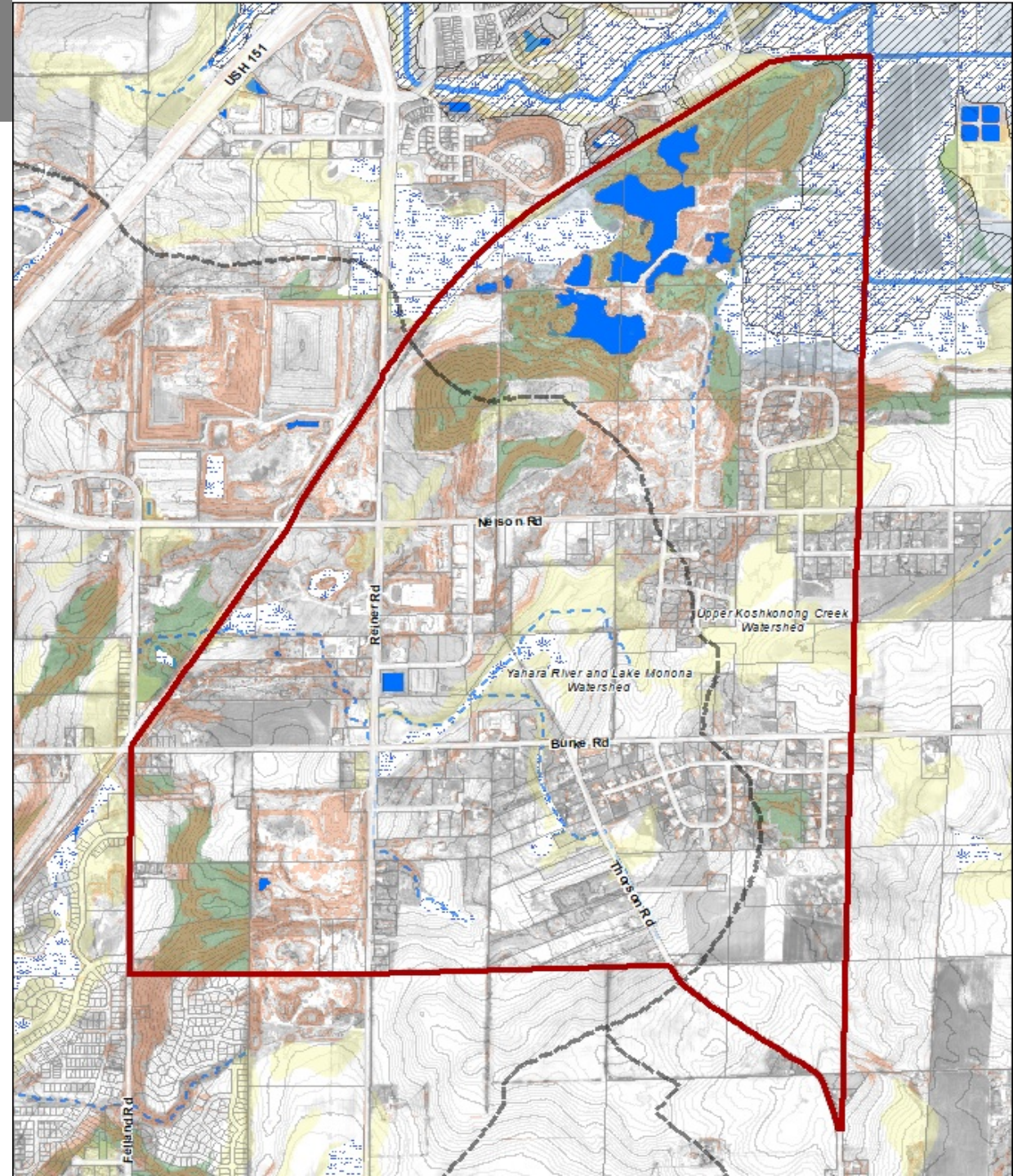
2018 Comprehensive Plan: Generalized Future Land Use Map



Reiner Neighborhood Development Plan

Environmental Features

- Rolling hills
- Topography
- Watersheds
- Woodlands
- Wetlands and Floodplains
- Soils

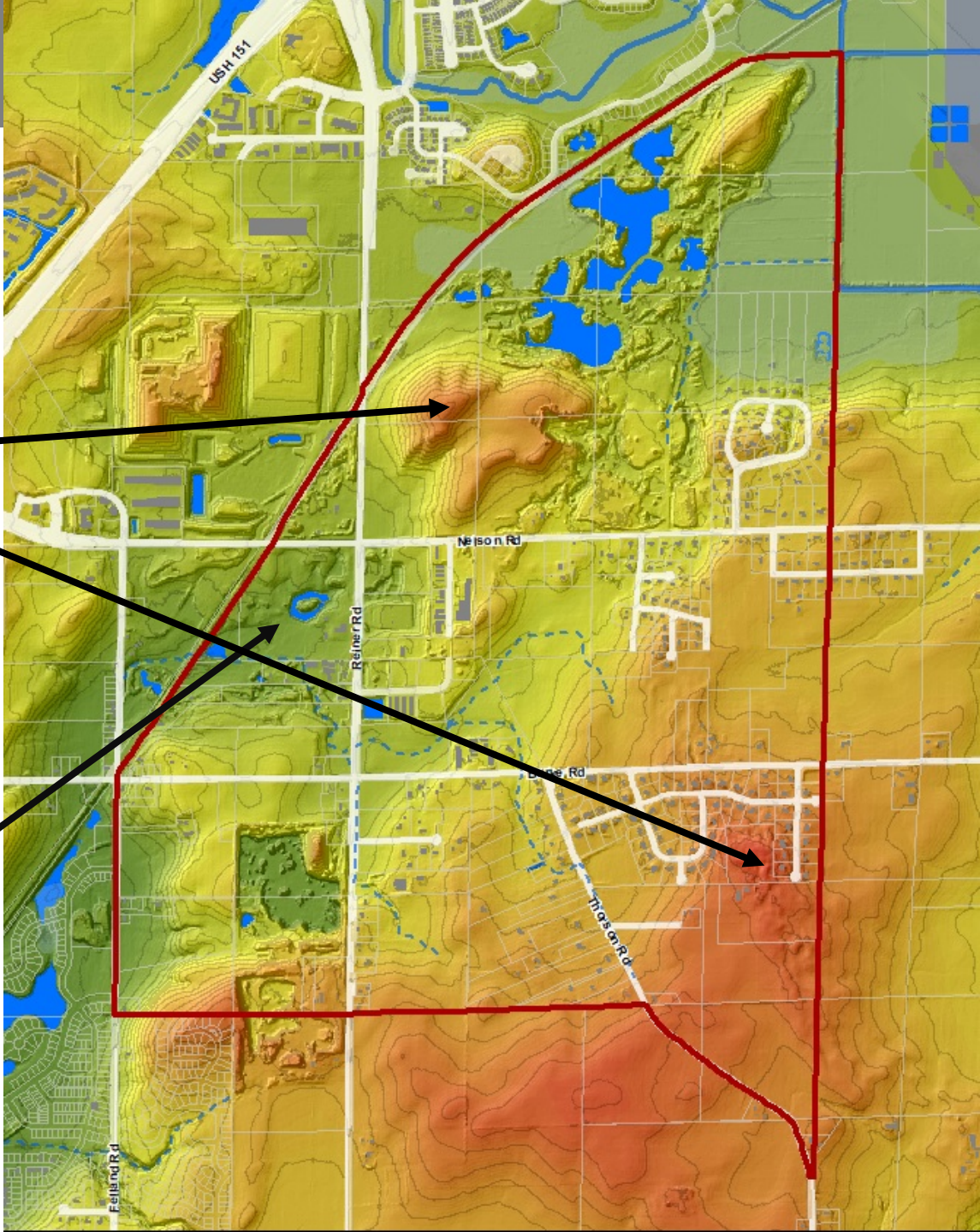


Reiner Neighborhood Development Plan

Elevation




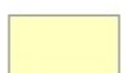





~1070 Feet

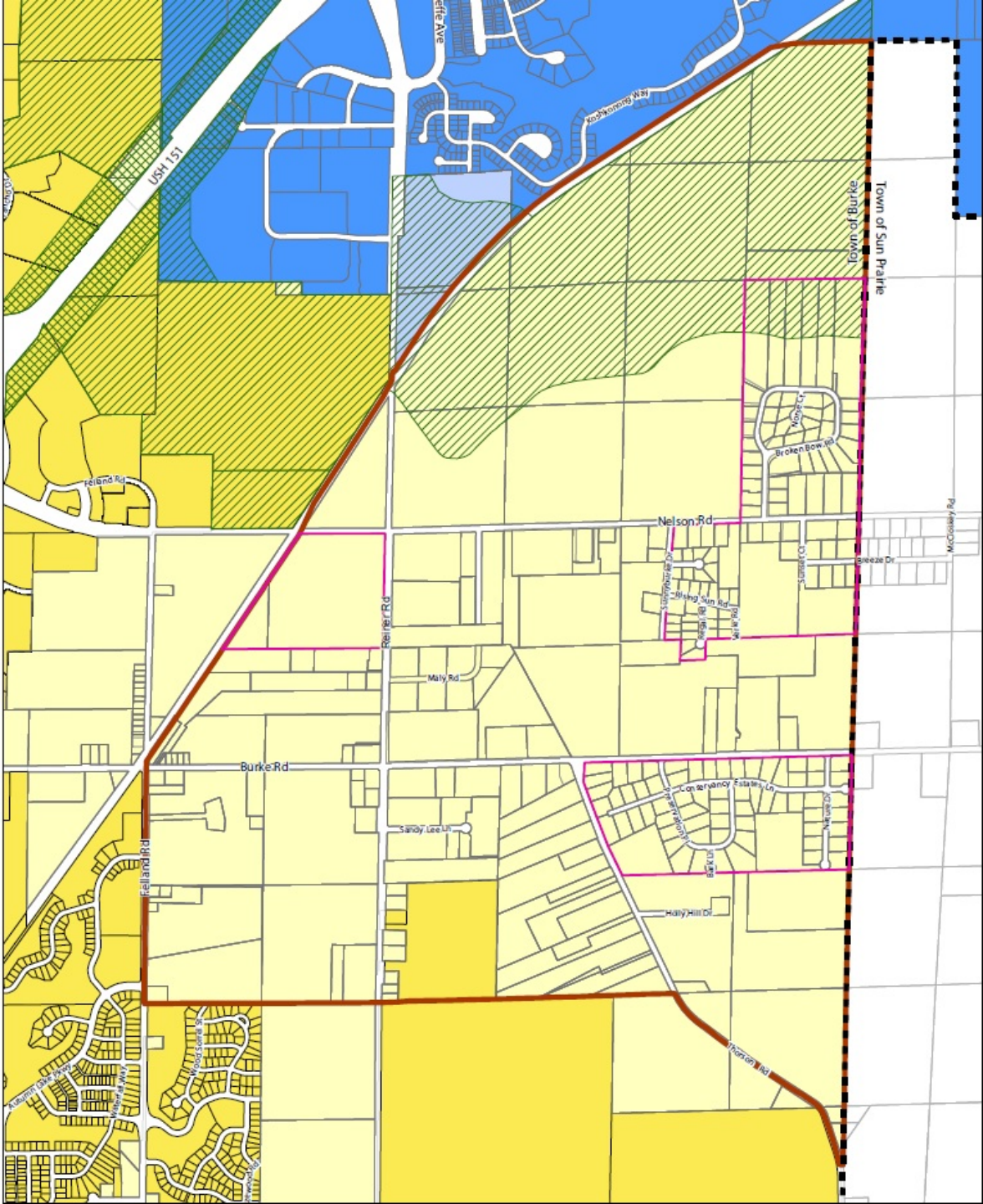
~850 Feet



Reiner Neighborhood Development Plan

Burke Cooperative Plan

-  Reiner NDP Boundary
-  Township Boundary
-  City of Madison
-  Town of Burke Parcels attaching to the City of Madison (Final Attachment: 2036)
-  City of Sun Prairie
-  Town of Burke Parcels Attaching to the City of Sun Prairie (Final Attachment: 2036)
-  Protected Areas
-  Sun Prairie - Madison Community Separation Agreement Area
-  Sun Prairie - Madison USH 151 Landscape Buffer Zone Agreement Area



Reiner Neighborhood Development Plan

Plan will focus on:

- Evaluate and recommend:
 - Land Uses/housing types
 - Street layout
 - Parks
 - Identify potential stormwater management, drainage locations
 - Future Transit
 - Public utilities and services

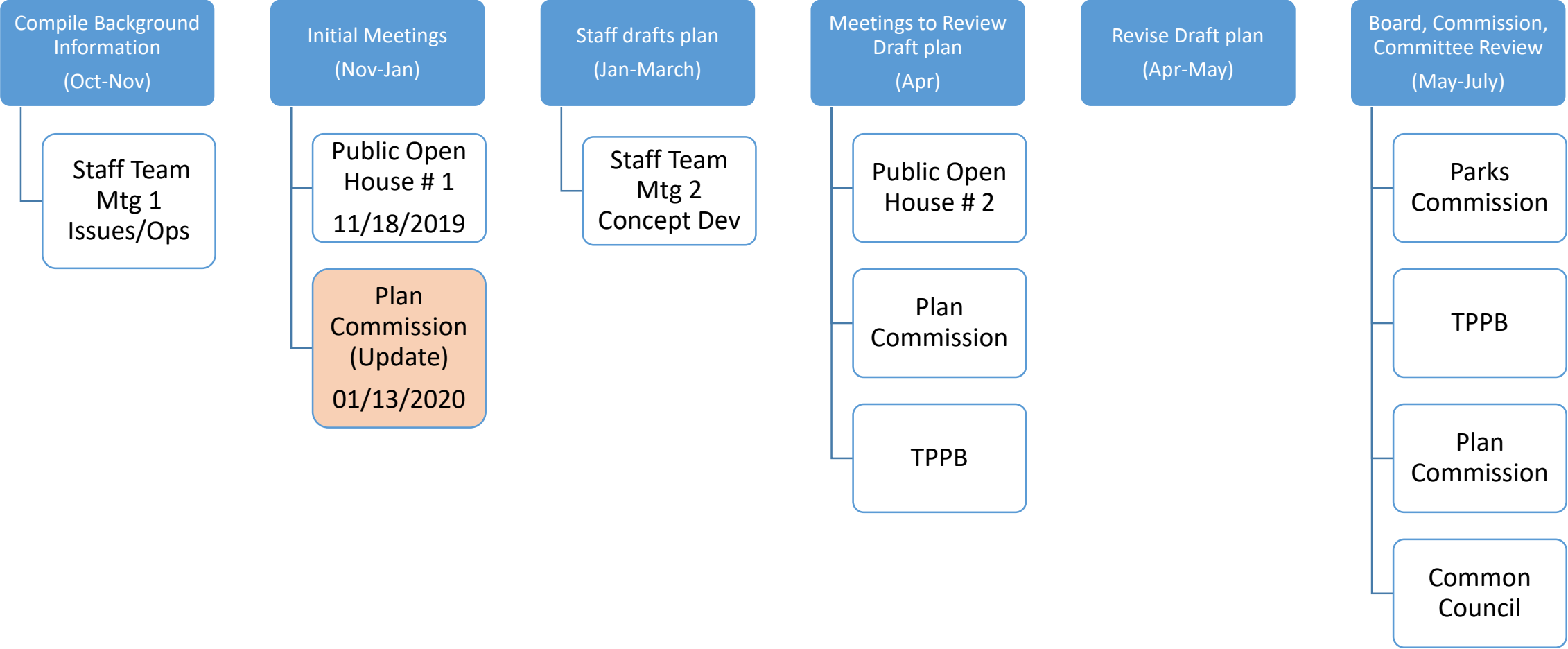


Public Meeting Feedback Summary:

- Support for Ped/Bike Facilities
- Concerns about losing the rural feeling and preservation of open spaces
- Questions relating to the Cooperative Plan and Protected Areas
- Concerns about early attachment of properties and its impact on adjacent properties
- Questions relating to the extension of utilities and School District boundaries

Reiner Neighborhood Development Plan

Project Timeline



Questions?

Project Website: www.cityofmadison.com/ReinerNDP

Urvashi Martin

608-267-8735

umartin@cityofmadison.com