

GREAT SCOTT!! MADISON WILL GROW BY 100,000 PEOPLE IN THE NEXT 25 YEARS!!

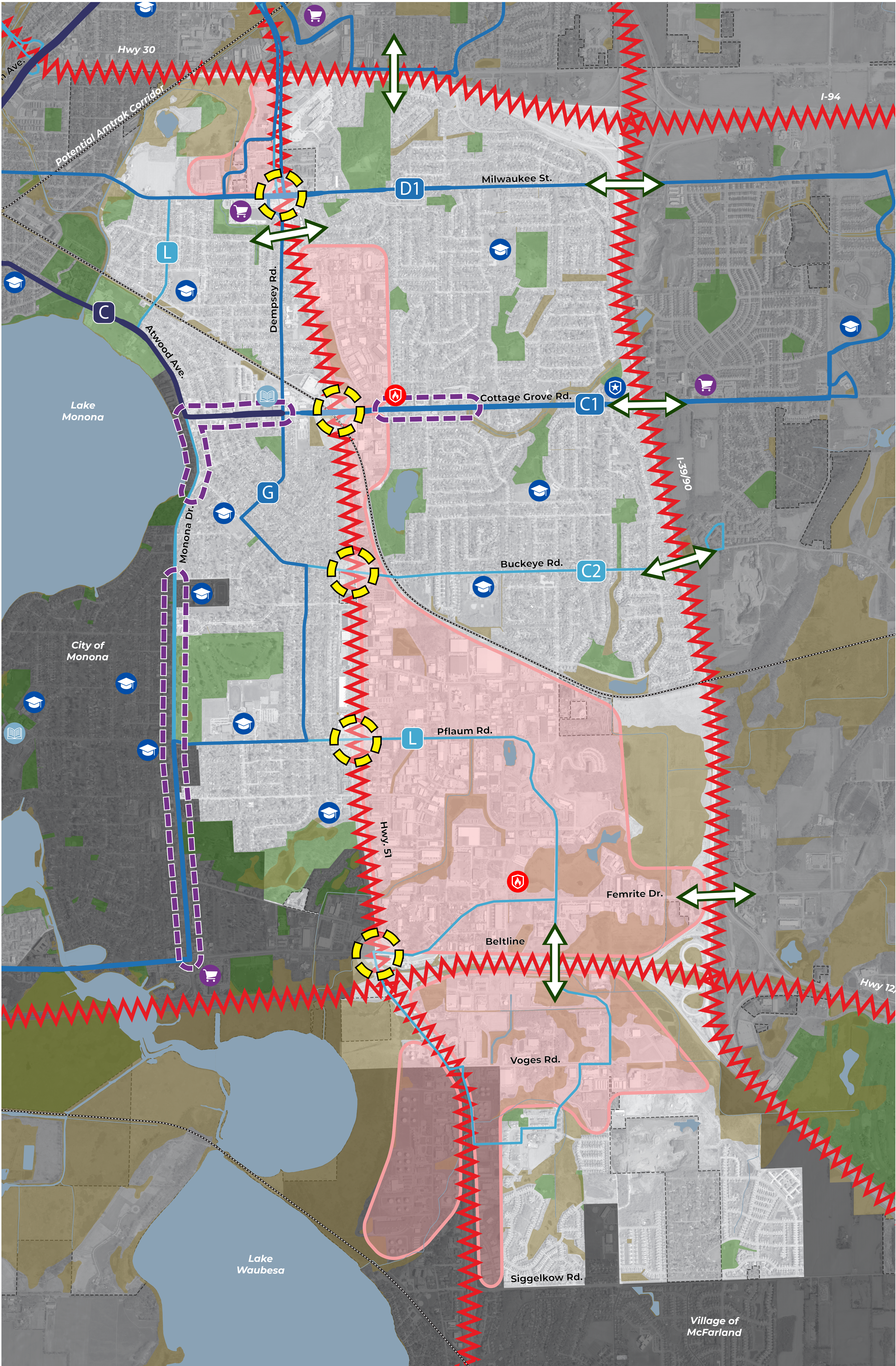
WHAT'S OUR PATH TO THE FUTURE

THE SOUTHEAST AREA PLAN

Southeast Area Plan Features and Assets

- Highways and Barriers
- Challenging Intersections
- Low Stress Crossings
- Rail Corridors
- Transit Routes
 - Frequent Service
 - Standard Service
 - Coverage Service
- Schools / Libraries
- Fire / Police Stations
- Commercial Centers
- Neighborhood Commercial
- Employment Areas
- Parks
- Environmental Features

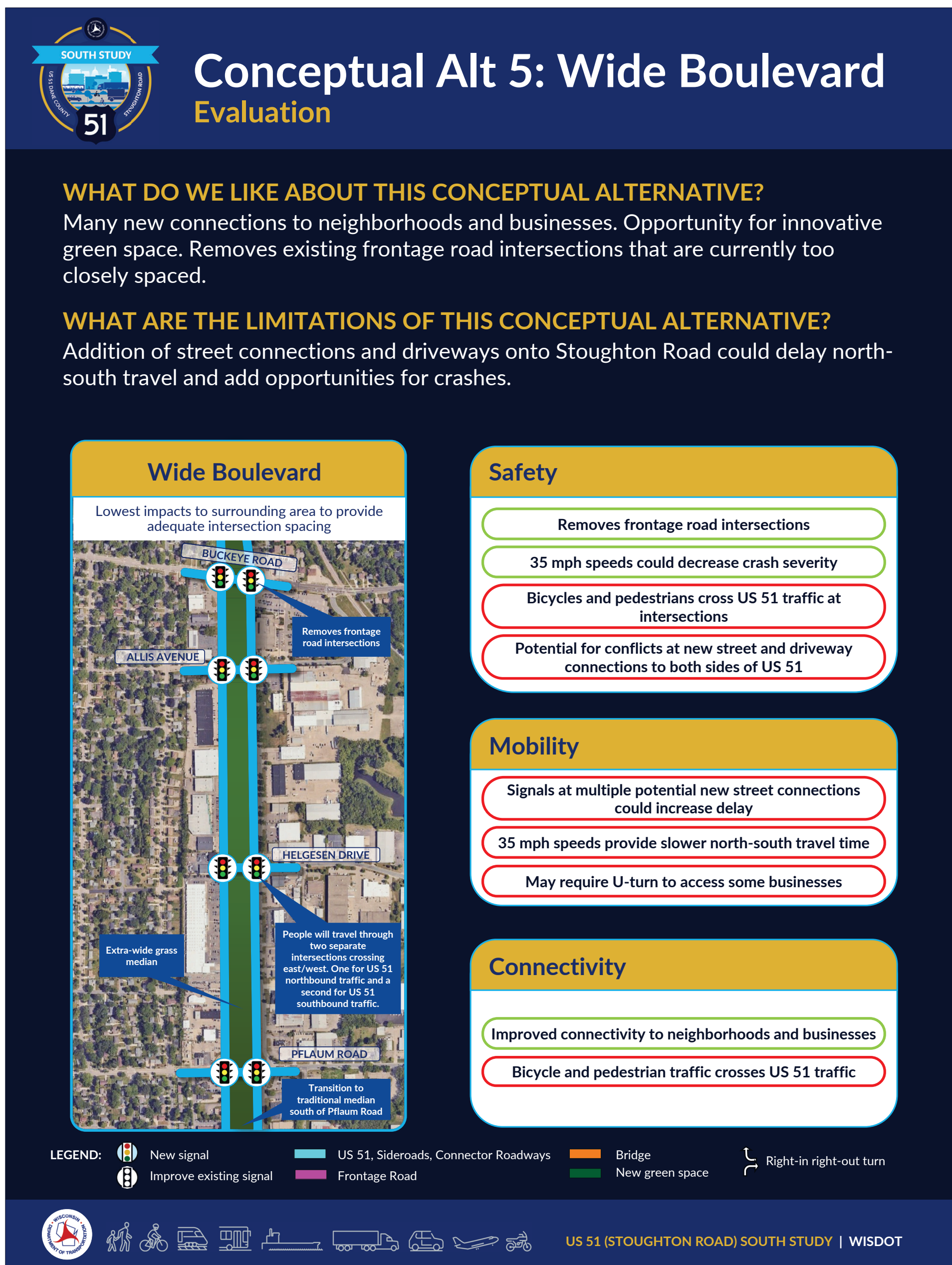
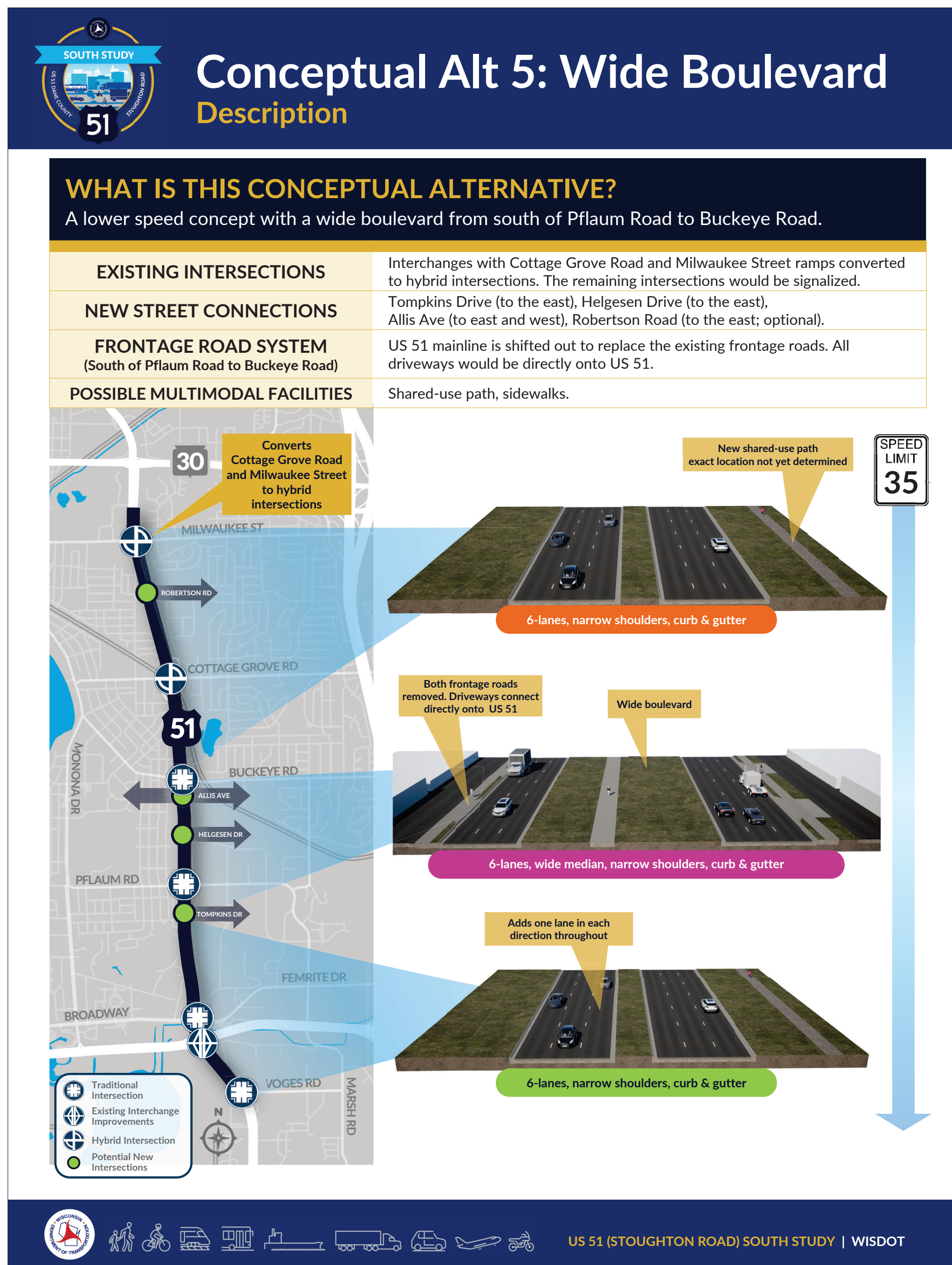
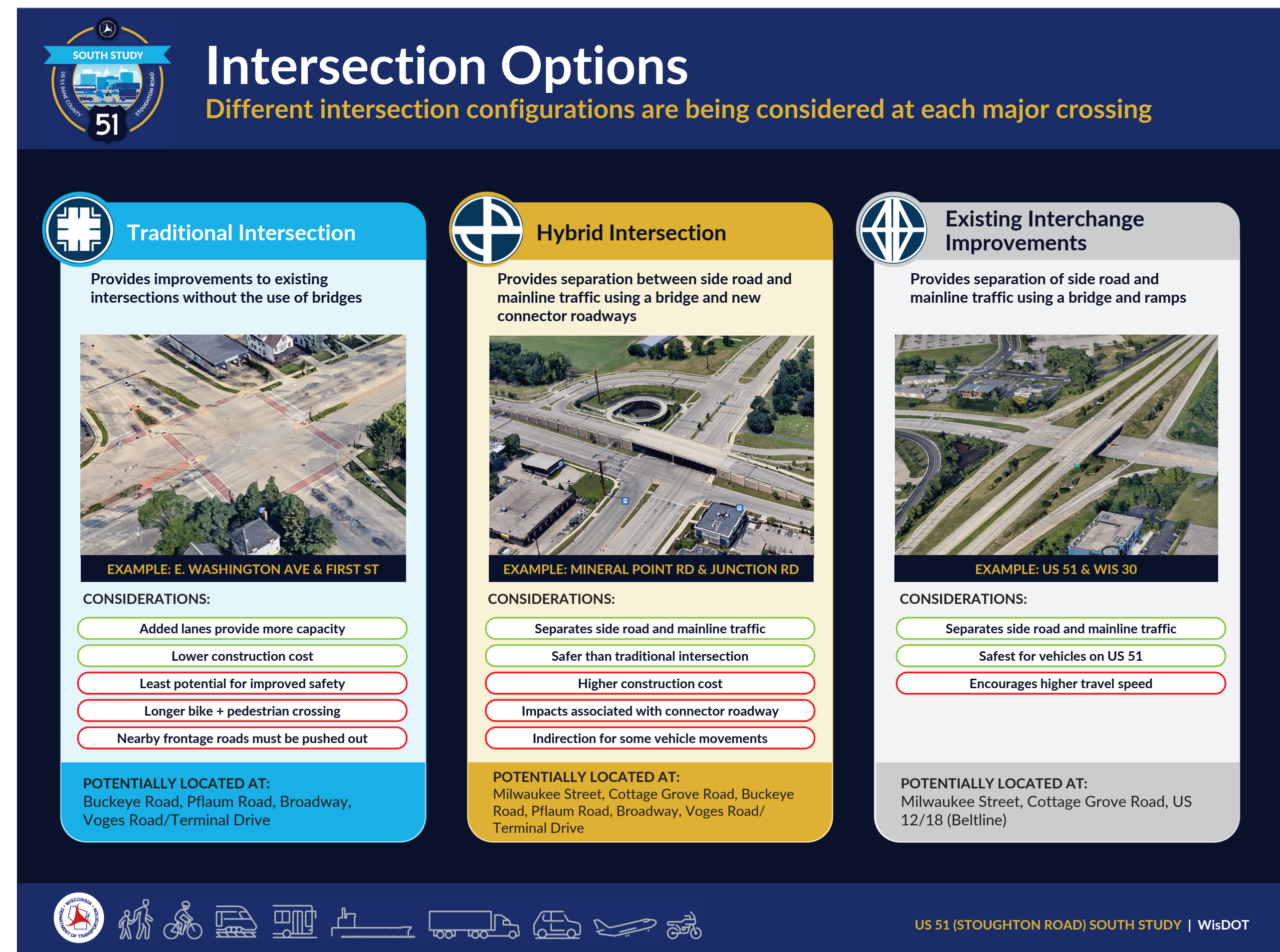
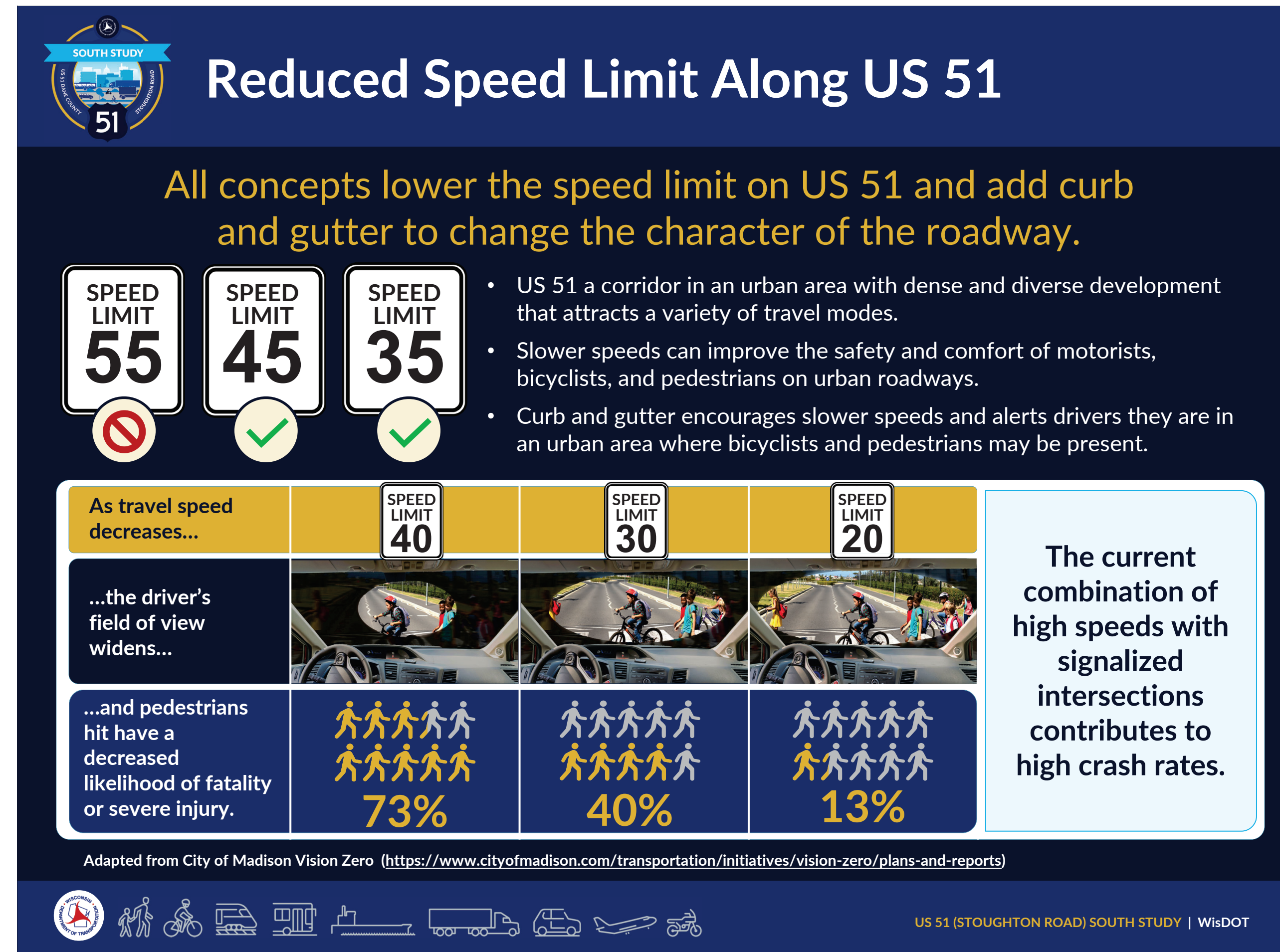
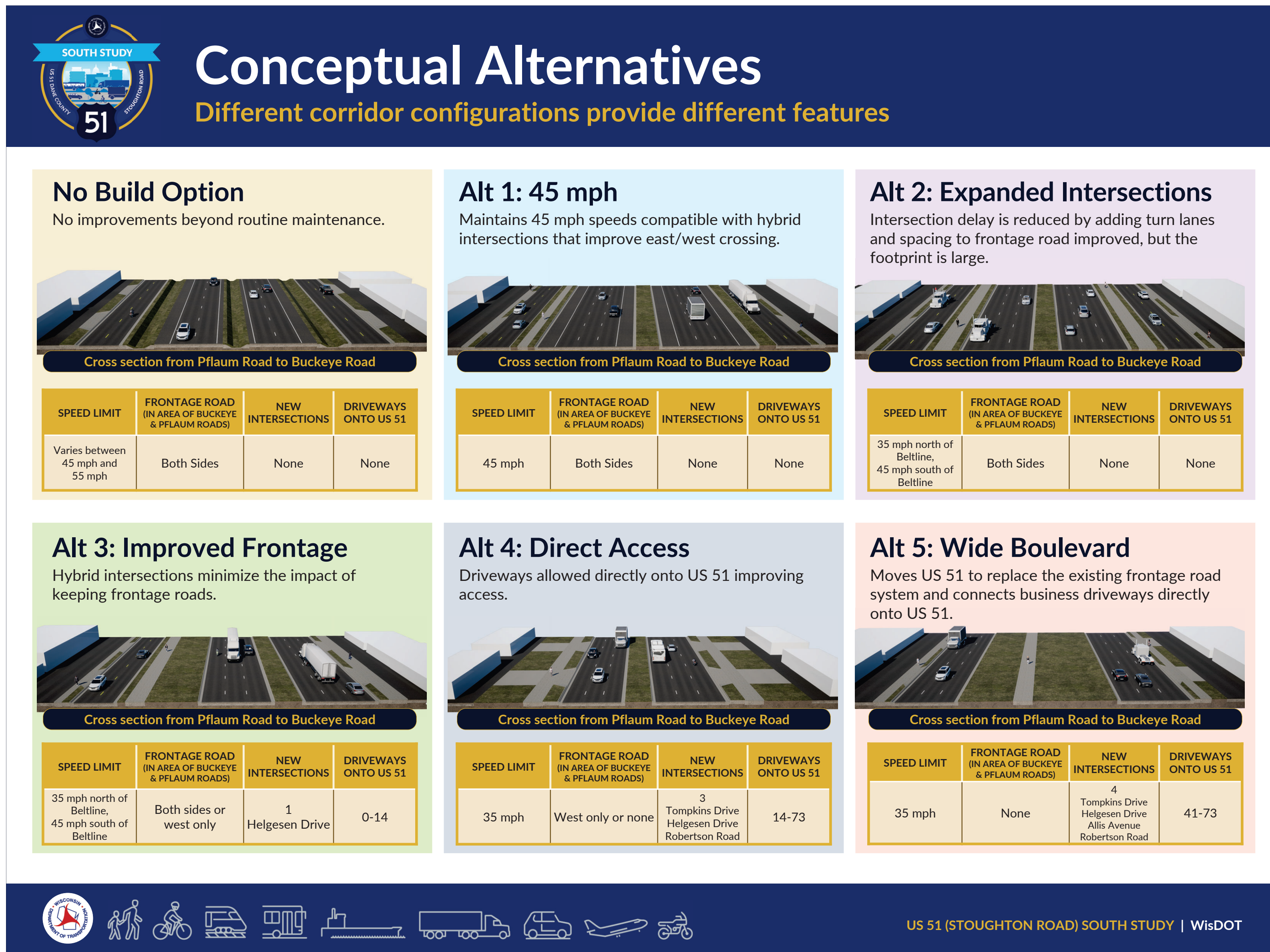
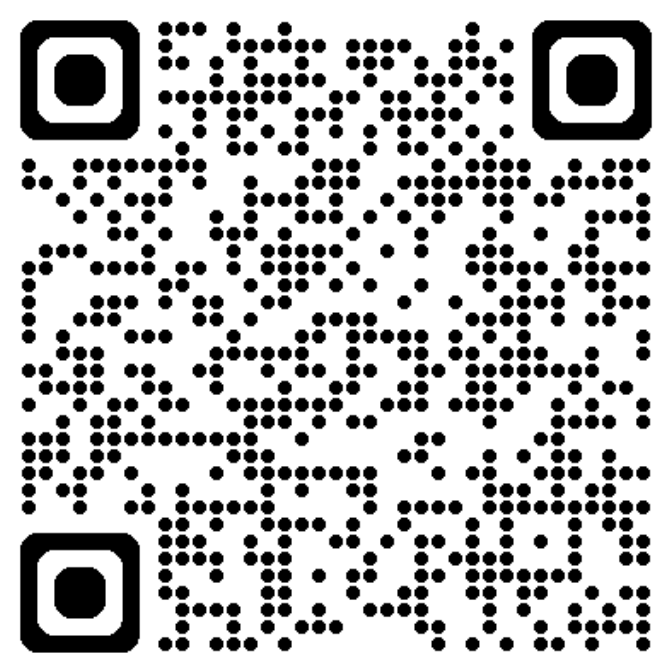
Southeast Area Plan website



WHERE WE'RE GOING, WE NEED MORE THAN JUST ROADS ➡ WISDOT HWY 51 STUDY



WisDOT Hwy 51 Study website

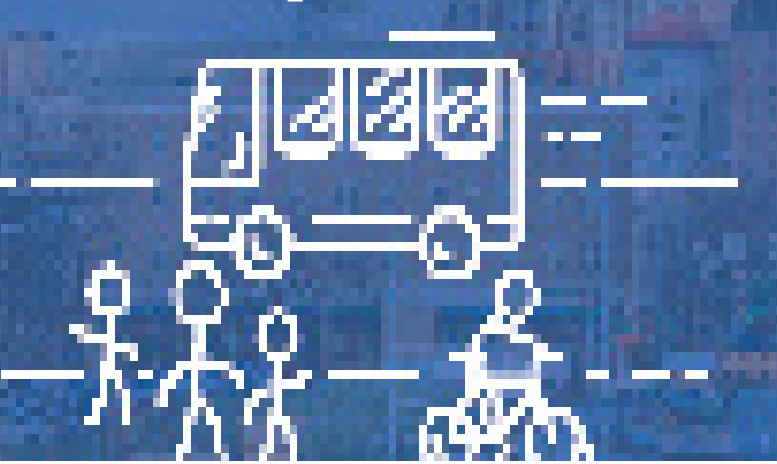


PATH TO THE FUTURE

SOUTHEAST AREA PLAN

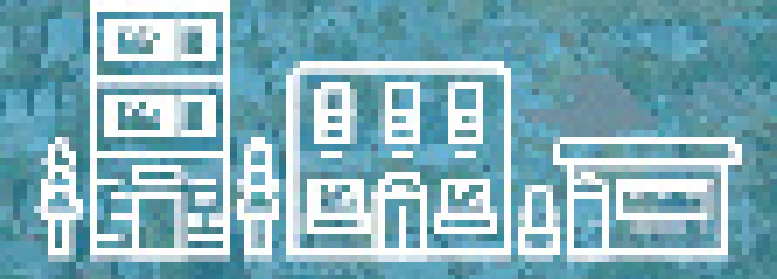
WHAT PEOPLE HAVE TOLD US SO FAR

Land Use and Transportation



- Redevelop commercial areas into mixed-use spaces to boost housing density and reduce excess parking
- Increase development and density in key areas
- Improve bicycle/pedestrian safety
- Improve bike/pedestrian infrastructure to improve visibility of pedestrians/cyclists' crossings
- Improve street connections and design on various roads like Highway 51

Neighborhoods and Housing



- Encourage diverse housing designs
- Create alleyways for safe cycling, slower traffic speeds, and trash collection
- Improve active transportation management to help children safely cross streets to and from school

Culture and Character



- Love Pinney Library
- Heistand Neighborhood needs accessible indoor/outdoor gathering spaces year-round
- Create more neighborhood-serving destinations and activities in areas

Green and Resilience



- Great park and open space network
- Increase access and improve facilities at parks
- Add more trees and green spaces, such as pocket parks

Effective Government

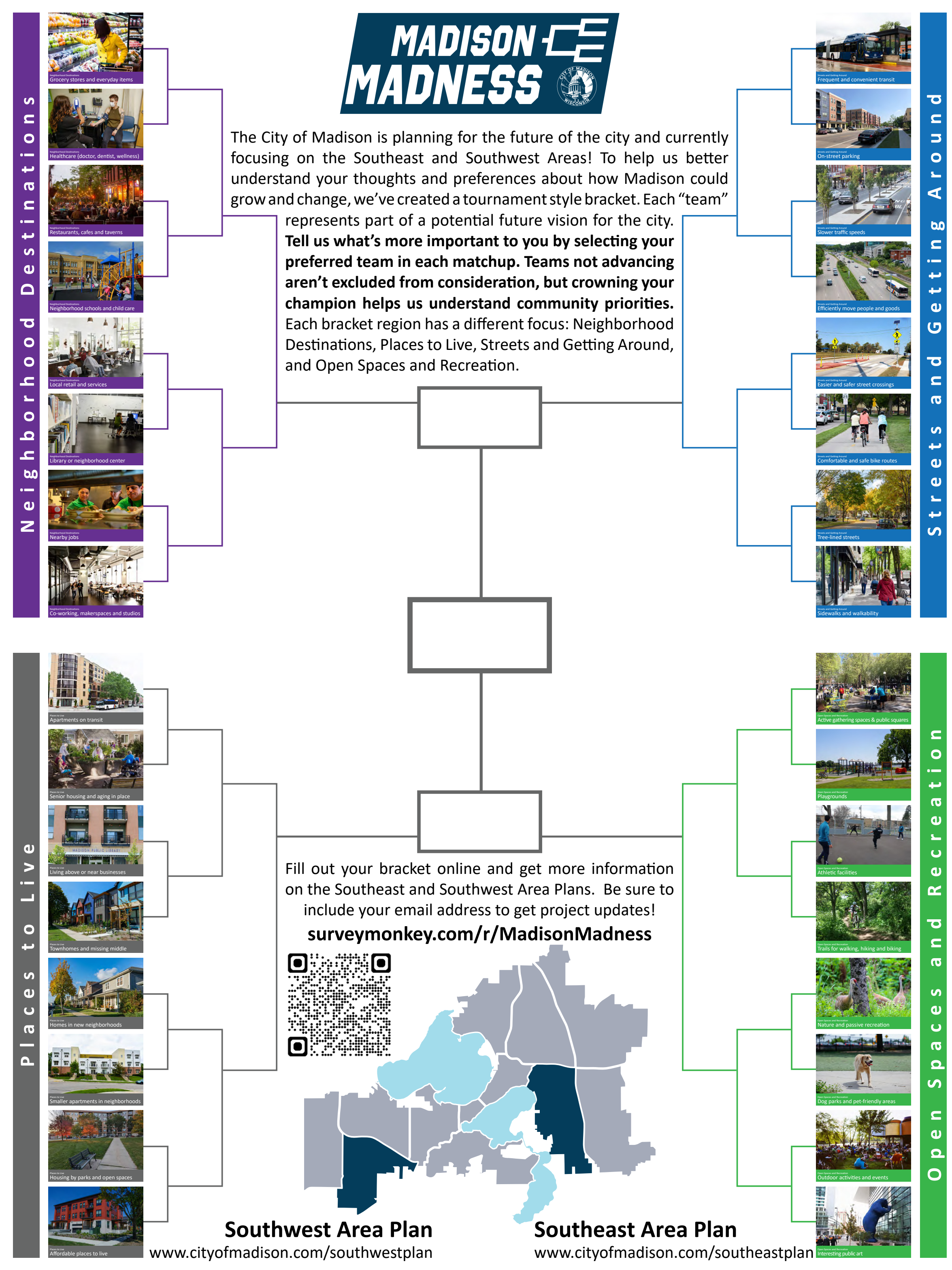
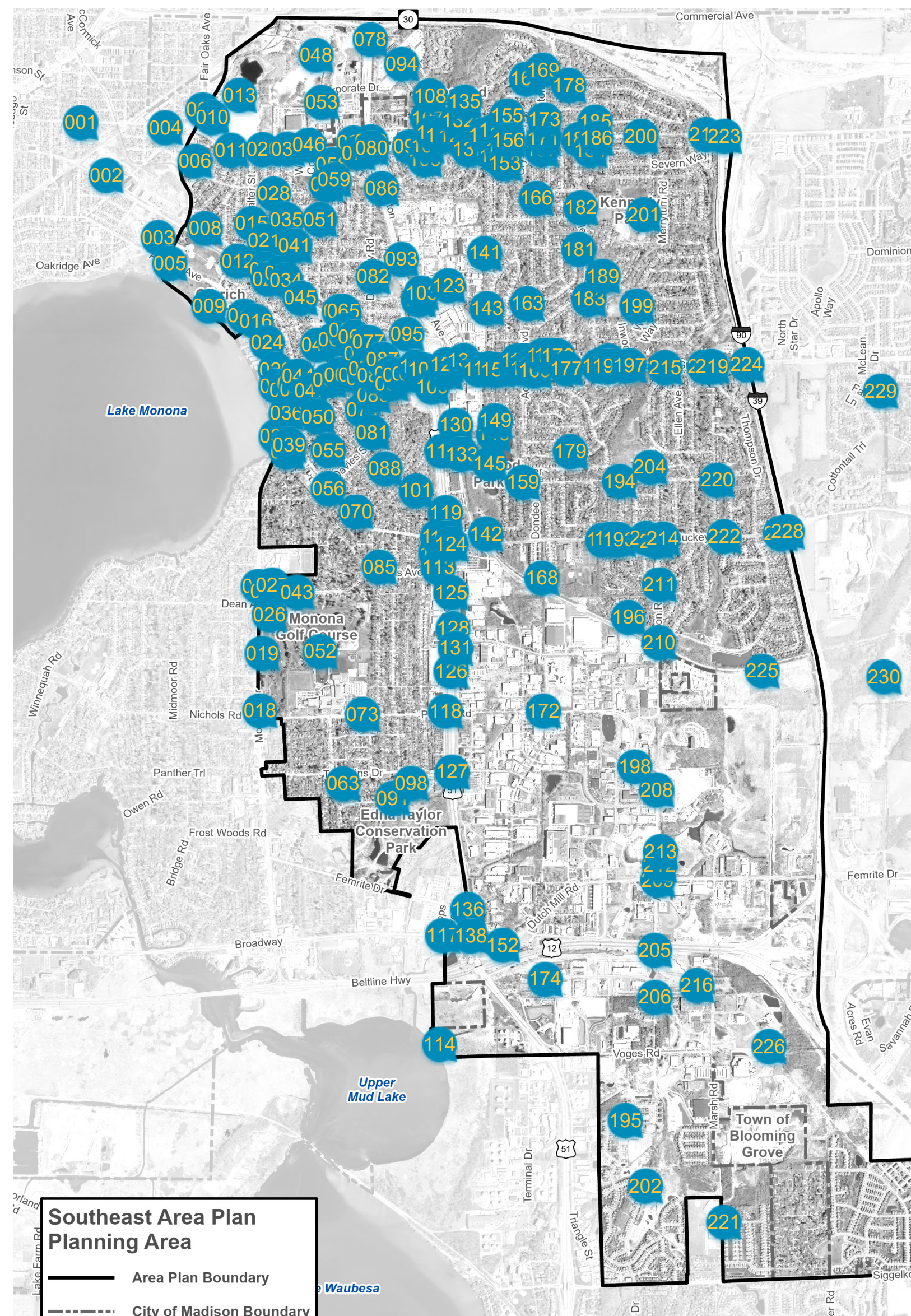


- Work with Monona to connect bike paths and bus routes

Economy and Opportunity



- Study feasibility and options for denser commercial office space



Madison Madness Southeast Area Plan 307 Responses

		Advance to Round of 16	Advance to Quarterfinals	Advance to Semifinals	Advance to Finals	Win Finals
Neighborhood Destinations	Grocery stores and everyday items	87%	38%	24%	9%	5%
	Healthcare (doctor, dentist, wellness)	13%	7%	4%	3%	2%
	Restaurants, cafes and taverns	64%	35%	29%	19%	9%
	Neighborhood schools and child care	34%	20%	14%	6%	4%
	Local retail and services	39%	32%	4%	3%	1%
	Library or neighborhood center	58%	48%	20%	10%	4%
	Nearby jobs	68%	16%	4%	0%	0%
Places to Live	Co-working, makerspaces and studios	26%	2%	0%	0%	0%
	Apartments on transit	59%	23%	5%	3%	0%
	Senior housing and aging in place	37%	20%	11%	5%	2%
	Living above or near businesses	29%	11%	6%	3%	2%
	Townhomes and missing middle	65%	45%	21%	10%	4%
	Homes in new neighborhoods	40%	13%	8%	5%	1%
	Smaller apartments in neighborhoods	53%	15%	4%	3%	1%
Streets and Getting Around	Housing by parks and open spaces	53%	36%	20%	6%	1%
	Affordable places to live	42%	35%	25%	16%	14%
	Frequent and convenient transit	71%	49%	25%	17%	6%
	On-street parking	23%	11%	3%	3%	2%
	Slower traffic speeds	44%	19%	5%	3%	1%
	Efficiently move people and goods	49%	18%	6%	3%	1%
	Easier and safer street crossings	30%	13%	6%	4%	1%
Open Spaces and Recreation	Comfortable and safe bike routes	62%	39%	26%	16%	9%
	Tree-lined streets	46%	21%	15%	4%	3%
	Sidewalks and walkability	47%	26%	14%	9%	3%
	Active gathering spaces and public squares	69%	37%	24%	8%	3%
	Playgrounds	23%	12%	7%	5%	2%
	Athletic facilities	14%	7%	4%	2%	1%
	Trails for walking, hiking and biking	78%	42%	22%	8%	6%
	Nature and passive recreation	70%	41%	18%	10%	5%
	Dog parks and pet-friendly areas	23%	14%	7%	3%	3%
	Outdoor activities and events	77%	39%	16%	6%	4%
	Interesting public art	15%	5%	3%	1%	0%

Southeast Area Plan website

