



Department of Planning & Community & Economic Development

## Planning Division

Bill Fruhling, Interim Director

215 Martin Luther King Jr. Blvd. Ste 017

P.O. Box 2985

Madison, Wisconsin 53701-2985

Phone: (608) 266-4635

Fax (608) 266-6377

[www.cityofmadison.com](http://www.cityofmadison.com)

April 8, 2024

### State Street 2024 Pedestrian Mall

The City of Madison is experimenting with a Pedestrian Mall on the 400-600 blocks of State Street this Summer. In 2023, the Common Council directed City staff to create a temporary pedestrian mall in those blocks and initial designs were presented at a public meeting in December 2023. The pedestrian mall experiment is a six-month trial that examines how State Street could work when it is closed to all traffic and used as a public space. Given its temporary nature, it will not include permanent physical changes to the street, but will include benches, planters, public art, street painting and other amenities.

### Opening and Preparation

The Pedestrian Mall is scheduled to open the week of May 6<sup>th</sup> but some changes will begin before that date. Street furniture (benches and planters) are scheduled to be delivered the week of April 22<sup>nd</sup>. Benches and planters will be placed in the roadway at the curb, generally at the locations shown during the business outreach in March (also shown on back). We are finalizing locations based on comments received.

Street painting will take place on several dates. These include April 18<sup>th</sup> from 5-7pm and April 21<sup>st</sup> from 9 am to 4 pm. April 21<sup>st</sup> is a larger community event where the public has been invited to paint stencils on the street. May 5<sup>th</sup> and/or other painting dates may also be needed depending on weather. If you want to be a part of the public painting event, please sign up! <https://www.surveymonkey.com/r/flocktostate>

### Street Closures

As part of the pedestrian mall experiment, there will be periods where the 400-600 blocks of State Street is closed to virtually all non-emergency traffic, including delivery vehicles. After outreach and conversations with businesses in March, those blocks will be closed after 3:00 pm on weekdays and after 10:00 am on weekends. The streets will re-open to traffic daily at 4:00 am to facilitate deliveries. These hours will be displayed on signage and graphics throughout the 400-600 blocks and your assistance is appreciated in maintaining these hours as a vehicle-free time. Cross streets will remain open at all times and loading zones at the street ends can be used to facilitate deliveries during times of street closures. The section of State Street between Hawthorne Court and Lake Street is not included in the pedestrian mall area and will remain open at all times. City of Madison has reached out to USPS, UPS and FedEx to make them aware of these restrictions. Please work with your other delivery companies to ensure they are aware of traffic restrictions.

### Large Vehicles

Planters will be placed on the inbound end of certain blocks to discourage vehicular traffic. While a turning radius analysis was done, it may be easier for larger vehicles to use different approaches minimize conflicts such as entering State Street from Lake or Broom Streets.

### I have questions. Who do I talk to?

Dan McAuliffe

City of Madison Planning Division

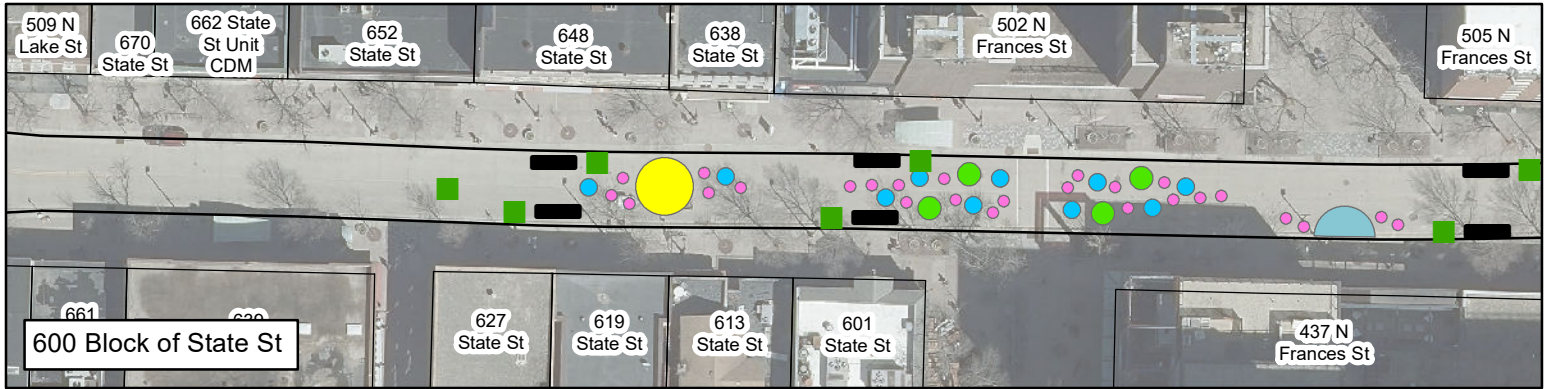
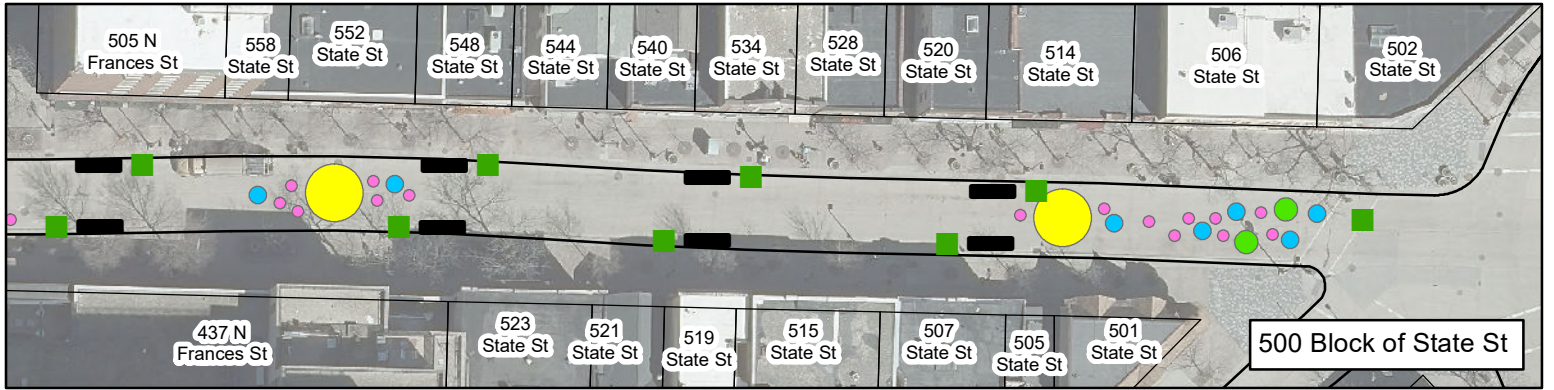
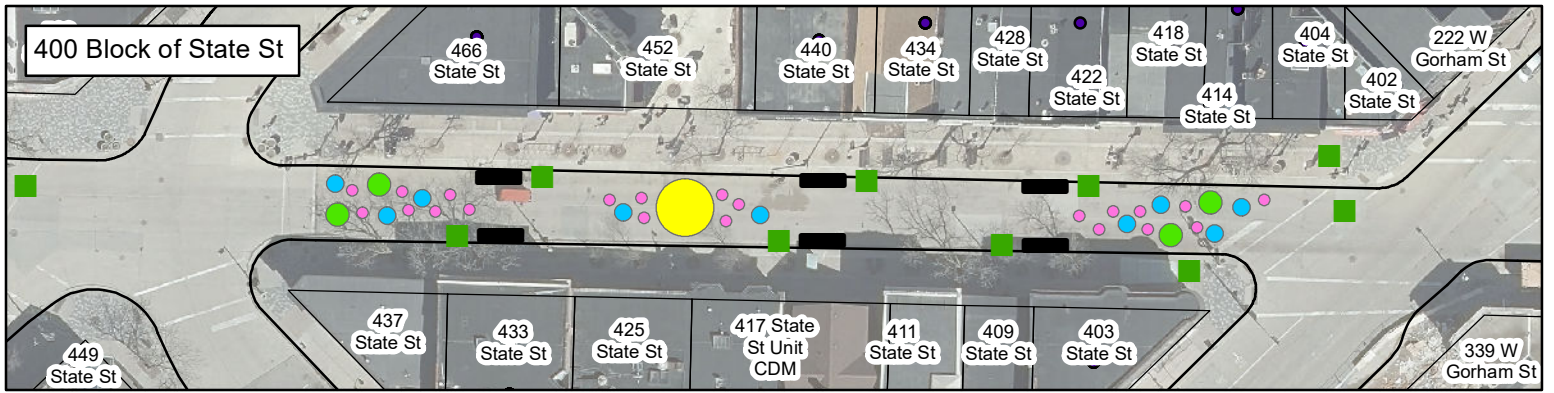
[dmcauliffe@cityofmadison.com](mailto:dmcauliffe@cityofmadison.com)

608-261-9676

<https://www.cityofmadison.com/dpced/planning/state-street-2024/3915/>

State Street website





Benches
  Planters
 

 Street Painting Area