

"Things to do, Places to go, People to see"

*Put blanket down
for Concert on the
Square @?*

*Remember:
Strawberries
Farmers Market
8am!!!*



Things to do, Places to go, People, to See
State Street Campus Garage Public Art Concepts
February 17, 2026

STUDIOKCA
Studio Klimoski Chang

Narrative for “**Things to Do, Places to Go, People to See**”

Every summer when we come back to Madison, my wife, son, and I make lists of all the things we want to do. Some things my son insists he and Grandma MUST DO (There is always a trip to the zoo to see the lions). Some things I’ve been doing since I was a kid growing up here and MUST DO (I can’t leave until I have had too many brats), Some of them are new discoveries we hear about in our neighborhood newsletter (Vilas Park has one of the most thorough and interesting newsletters) , Some of them my family, who still lives here, tells us about. It all comes down to the lists. In our studio, this list is a wall covered in sticky notes with things to do, places to go, and the people to see.

When we began developing the idea for the State Street Bus Depot, we thought about the people coming to Madison (some for the first time) to get a peak into planning our visits while getting a list of just some of the unique and wonderful aspects of Madison that make it a great place to live, work, and visit.

Things to Do, Places to Go, People to See is a sculpture that looks like a set of 10 giant post-it notes caught in the breeze, stuck to the building. Each note has a different event or place in and around Madison. During the day, the “writing” on the notes glows from a set of internal LED fixtures, while at night the notes themselves glow. Inside the depot, a notepad and pencil create a shared seating element for visitors.



Things to do, Places to go, People, to See
State Street Campus Garage Public Art Concepts
February 17, 2026

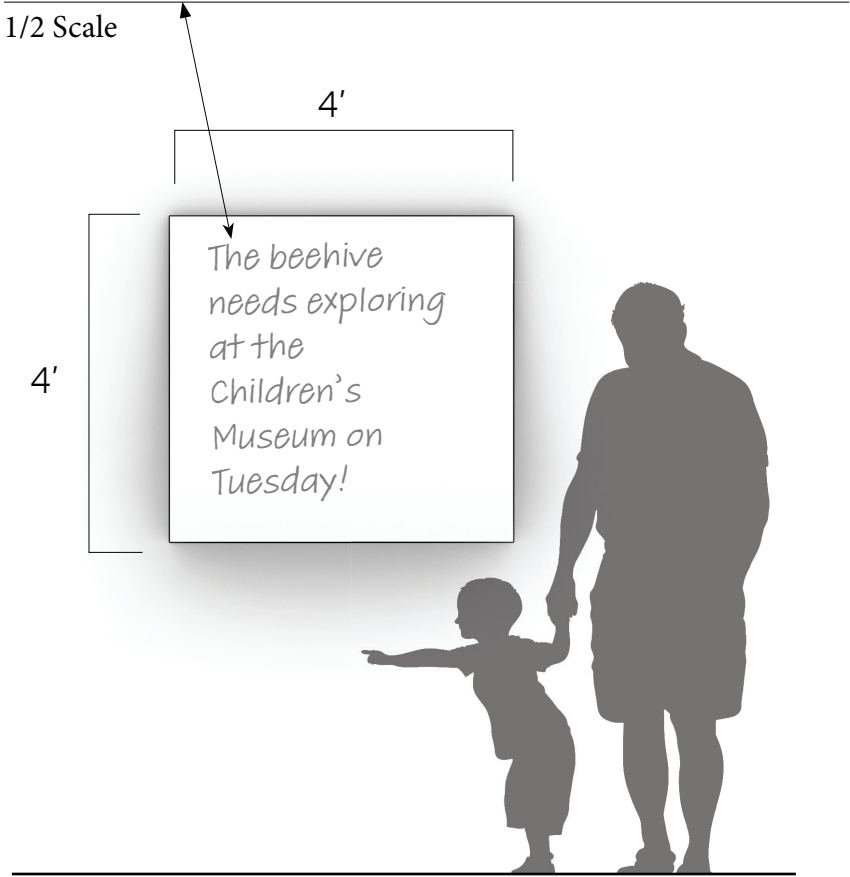
LOCATION

Things to do, places to go, people to see

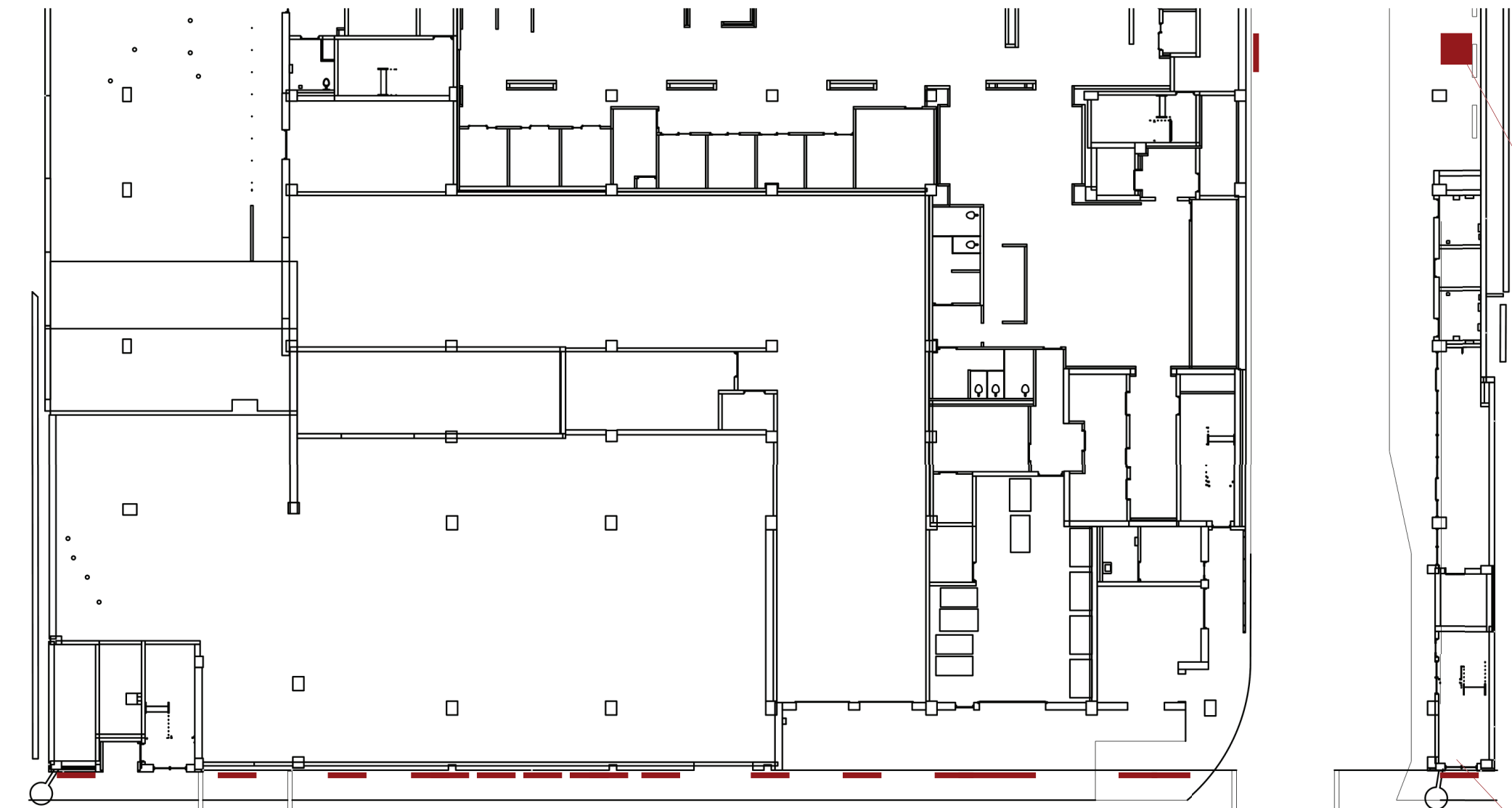
24 Larger-than-life post it notes attached across the Eastern facade of the bus depot, each with a reminder of all of the different places, people, and things that make Madison special.

Inside the depot, one of the benches is replaced with a post it note pad big enough for several people to sit on while waiting for friends to arrive, their bus to leave, or inspiration to strike...

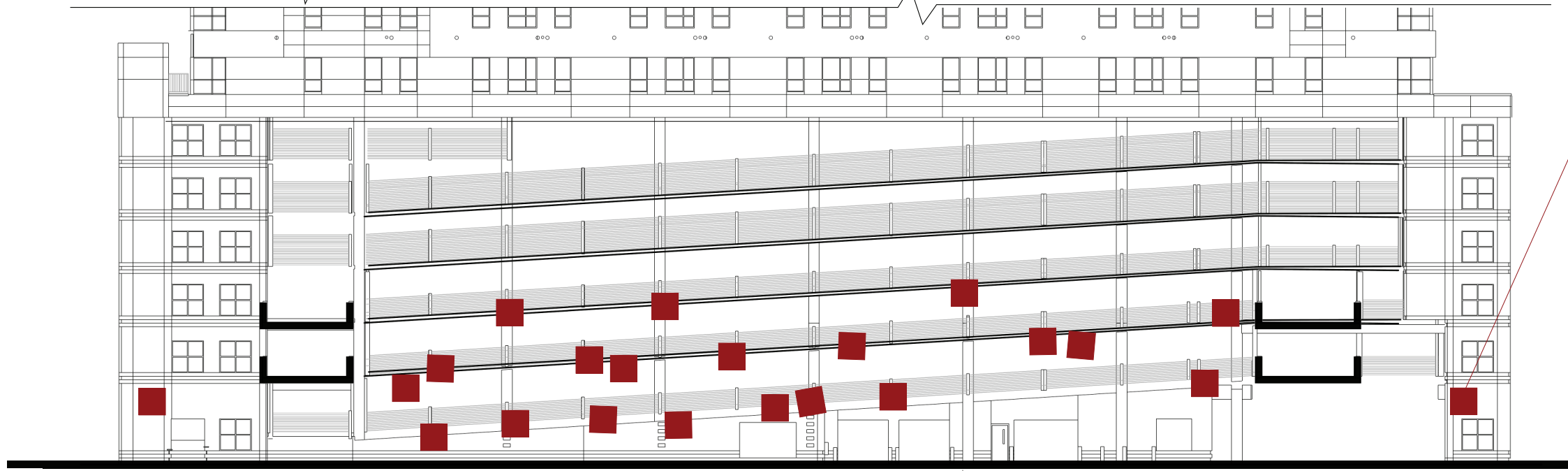
The



Detail



Plan



Section / Elevation



"Landing/
Seating Pad"



1 of 24 Notes

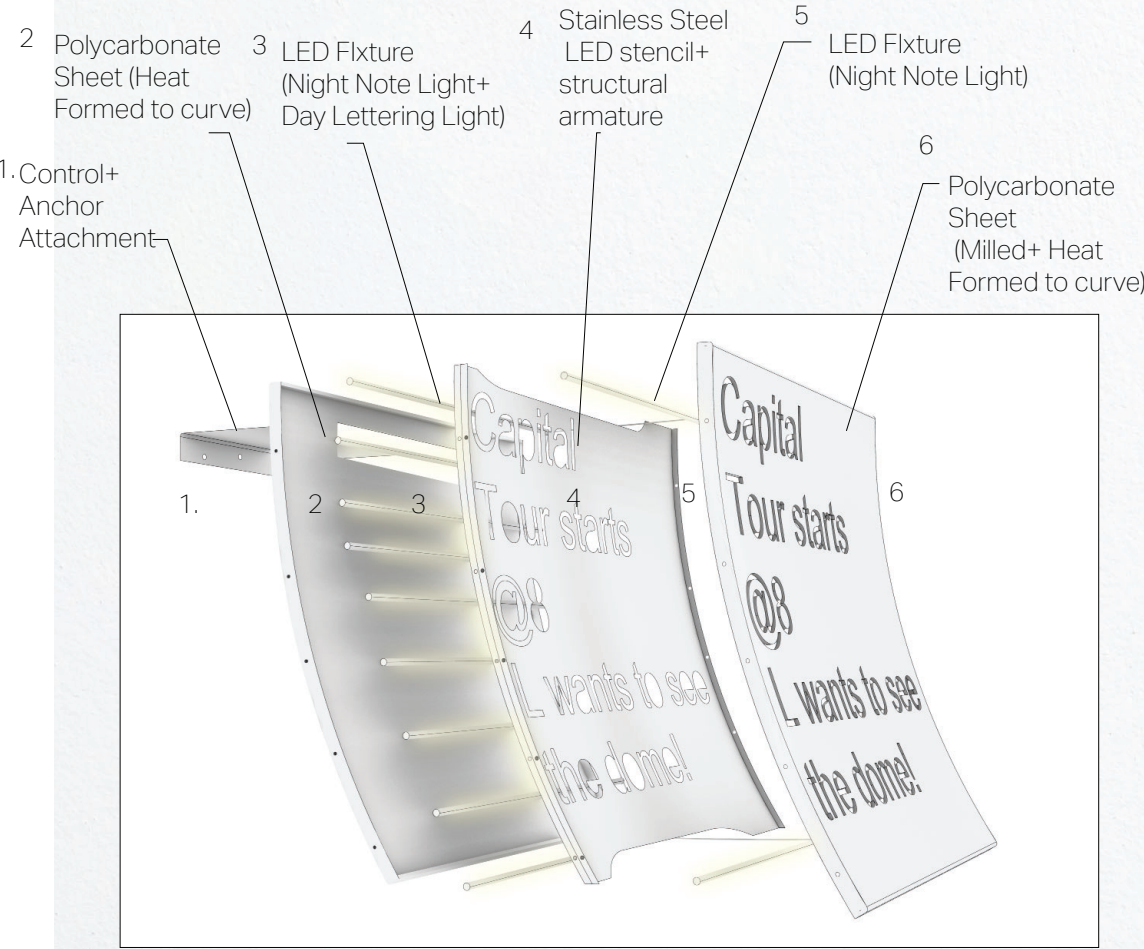
FORMAL DIRECTION

Things to do, places to go, people to see

24 large post-it notes, scaled to the building and attached across the building's southern facade along Hawthorne court. The notes are of the many different people, places, and things to do in Madison on any typical day. taken from actual note's stuck to the our fridge.

During the day, the letters glow, at night the note itself glows (one of three colors)

Fabrication and construction methodology:



Construction Methodology

NOTE: The "pad" is made in a similar fashion. The pen is stainless steel with a polycarbonate tip that lights up during the day (as if it writes in light)

coffee walk
and talk with
L @the
Arboretum
5:30am

Capital
Tour starts @8
L wants to see
the dome!

Remember
Strawberries
Farmer's
Market
8am!!!

Welcome!

Roses in full
bloom at
Olbrich
Garden go
with Mom on
Sunday

Take the boat
out onto
Lake Mendota
today- how
early is too
early?

Put blanket
down for
Concert on the
Square @7

Kayaking with
Gregg, Lake
Monona, 1pm

New exhibit
at the Chazen
to check out!

How many
brats are too
many? Let's
find out-
Memorial Union
terrace tonight

Walk the whole
mile down
State Street-
Capitol to
Campus

Raspberries are
everywhere-
pick some for
lunch

The beehive
needs exploring
at the
Children's
Museum on
Tuesday!

Walk Vilas
Park listen to
the birds
with Joe,
tomorrow @10

Dad wants to
go see Badgers
@Camp
Randall
tonight at 5

Lions at
Vilas Zoo
ROAR
at dusk-
so cool!

Heart symbol

The difference
between
stalactite and
stalagmite- day
trip to cave of
the mounds
tomorrow

Lesley
wants to go to
MMOCA-
new
exhibition!!

Art Fair on
the Square
July 11-13

APT is doing a
Midsummer's
Night Dream-
Can we make it
to Spring
Green?

Remember
Strawberries,
Farmer's
Market
8am!!

Luke wants to
go to Cave of
the Mounds
again this year
(So do I:)

First UWM
Geology mu-
seum, then
Burnie's Rock
Shop

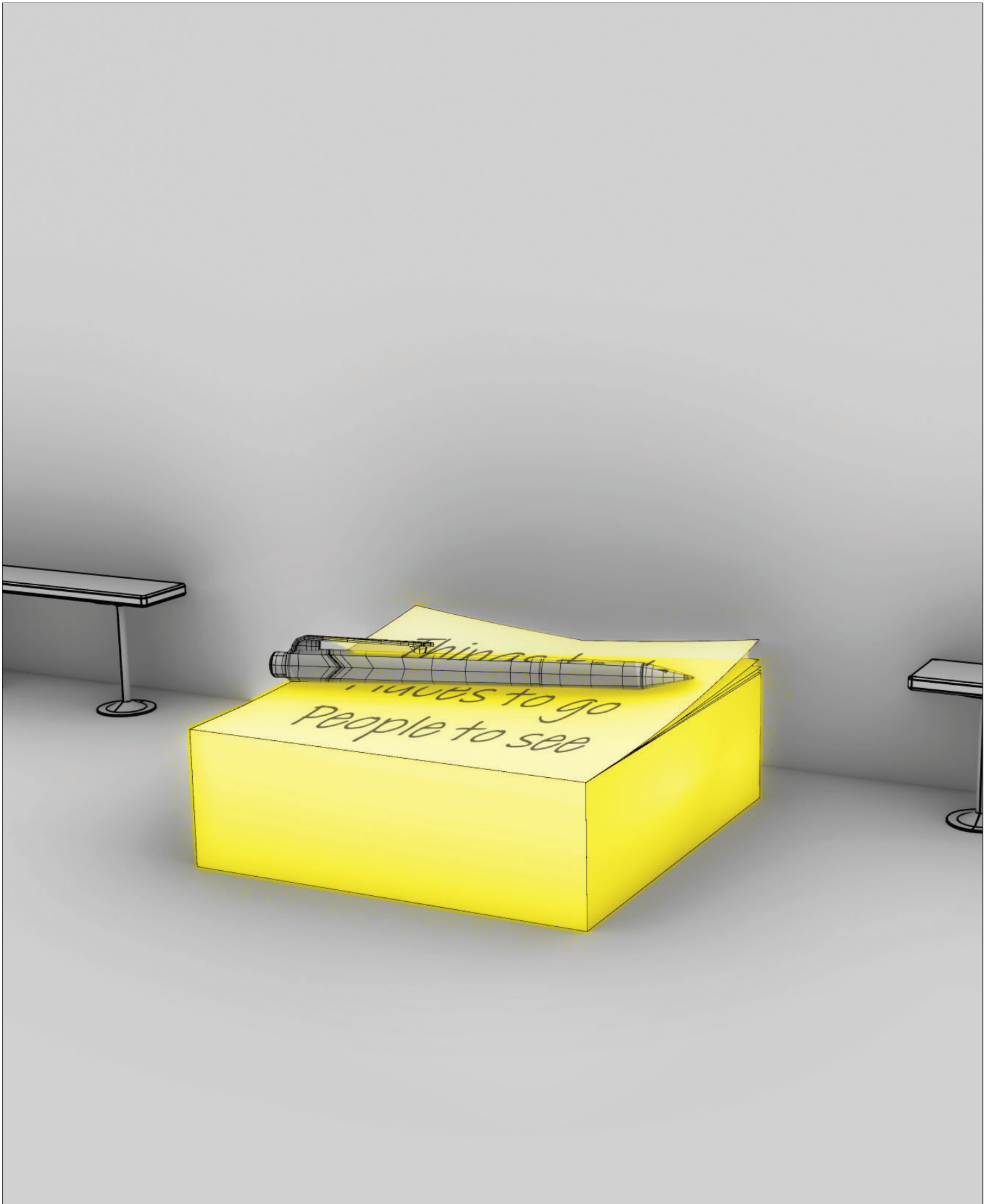
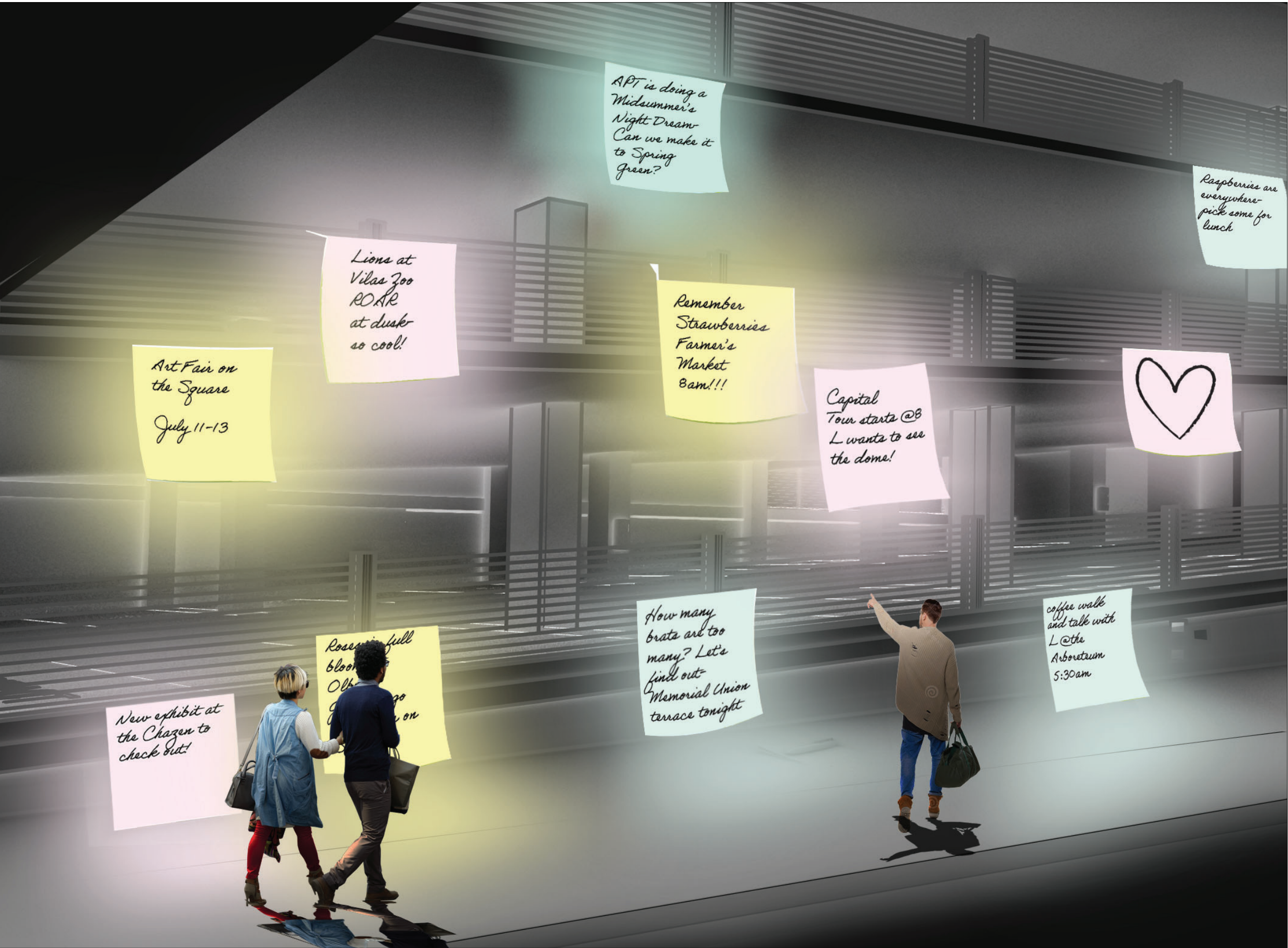
RENDERING

Things to do, places to go, people to see (day)



RENDERING

Things to do, places to go, people to see (night)



SCHEDULE+NARRATIVE

NARRATIVE:

Things to Do, Places to go, People to See is a sculpture that imagines a day in the life of someone visiting Madison and all of the things to see, and people (family, friends, future friends) to visit visualized through the creation of a city-sized set of post it notes that lead down and into the bus depot, culminating at the “pad” which is sized to allow people to sit on while they wait for the bus (or for the people coming off/ going on). During the day, the words on each post-it note look as if they are written in light. At night, the entire posit it note lights up (and the words look like they’ve been written in pencil)

Fabricated using a stainless steel armature, concrete anchors, polycarbonate sheets and IP65 rated LED fixtures.

The sculpture is built to withstand public interaction and Wisconsin weather. Anticipated maintenance is periodic replacement of LED fixtures (every 10 years), periodic cleaning, and yearly inspection.

PRELIMINARY SCHEDULE

- Design Development/Construction/ Fabrication Drawings: 3-5 months
- Fabrication: 5-6 months
- Installation of footing/connection posts (1-2 days)
- Installation of Sculpture: 5 days



Things to do, Places to go, People, to See
State Street Campus Garage Public Art Concepts
February 17, 2026



Jason Klimoski



Lesley Chang

ABOUT

StudioKCA, is a diverse, multidisciplinary art and design studio based in Brooklyn, NY founded by Jason Klimoski and Lesley Chang in 2012. They are a group of architects, artists, lighting designers, and fabricators who spend their time and energy in the pursuit of building meaningful objects and experiences for public spaces and events, with the hope that visitors are inspired to explore the world and have a positive impact on it. Their work ranges in scale and complexity from large pavilions and sculptures, to information kiosks, and even table lamps and chandeliers. Working collaboratively with clients and community leaders, they create iconic pieces that respond to their site and program requirements in thoughtful and thought provoking ways. Many of their creations explore the use of materials in unconventional ways focused on nature, science, consumption, conservation, and community. Their work has been showcased in many international magazines and television programs, and has shown in 5 countries, and 3 museums. Clients are private companies, individuals, and governments ad government agencies including NASA, ESA (European Space Agency), Boston Children’s Hospital in Boston, MA, Canary Wharf Group in London, England, The Freyer Newman center in Denver Colorado, Patricia Reser Center for rthe Performing Arts in Beaverton, Oregon, the City of Bruges Belgium, the City of Kaohsiung Taiwan, the City of Ottawa, Canada; the City of New York, the City of Oklahoma City, and the City of Olathe Kansas.

SELECT COMMISSIONED PUBLIC ART

“Tomorrow Today”, Ramapo, New Jersey (2026), “Interstellar Influencer (make an impact)” Alexandria, Virginia (2025); “Whale on the Wharf”, Canary Wharf, London (2025); ‘First Impressions’, Town Branch Park, Lexington, KY (2025); “Star”, Boston, MA (2025-Forthcoming); “Forest Stories”, Burlington, VT (2025-Forthcoming); “Vanier Gateway” Ottawa, Canada (2024) “Upon Reflection”, Toledo, Ohio (2023); ‘Taking Flight’, City of Oklahoma City, OK; (2022); Whale in Love, Kaohsuing, Taiwan (2020); ‘Leaf’, Denver Botanic Gardens Freyer-Newman Center, City of Denver, CO (2020); ‘SEED’, City of Olathe, KS (2019); ‘Night and Day’, City of Hopkins, MN (2018); ‘Skyscraper (the Bruges Whale)’, City of Bruges, Belgium (2018); ‘NASA Orbit Pavilion’, The Hunting-ton Library, Art Collection, and Botanical Gardens, San Marino, CA (2016); ‘Firefly’, The Gray Hotel, Chicago, IL, ‘NASA Orbit Pavilion’, Intrepid Sea, Air and Space Museum, New York, NY (2015); ‘NASA Orbit Pavilion’, New York University, New York, NY (2015); ‘Metamorphosis’, The Exploratorium Museum, San Francisco, CA (2015); ‘Key to My Heart’, 120 Wall Street, New York, NY (2014); ‘A Comet Lands in Brooklyn (Rosetta)’, Brooklyn Bridge Park, Brooklyn, NY (2014); ‘Drop’, Jockey Club, Sao Paulo, Brazil (2014); ‘Head in the Clouds’, Governors Island, New York, NY (2013).

Link to digital portfolio: www.studiokca.com

