

West Area Open House



Presentation Starts @ 6:45 p.m.

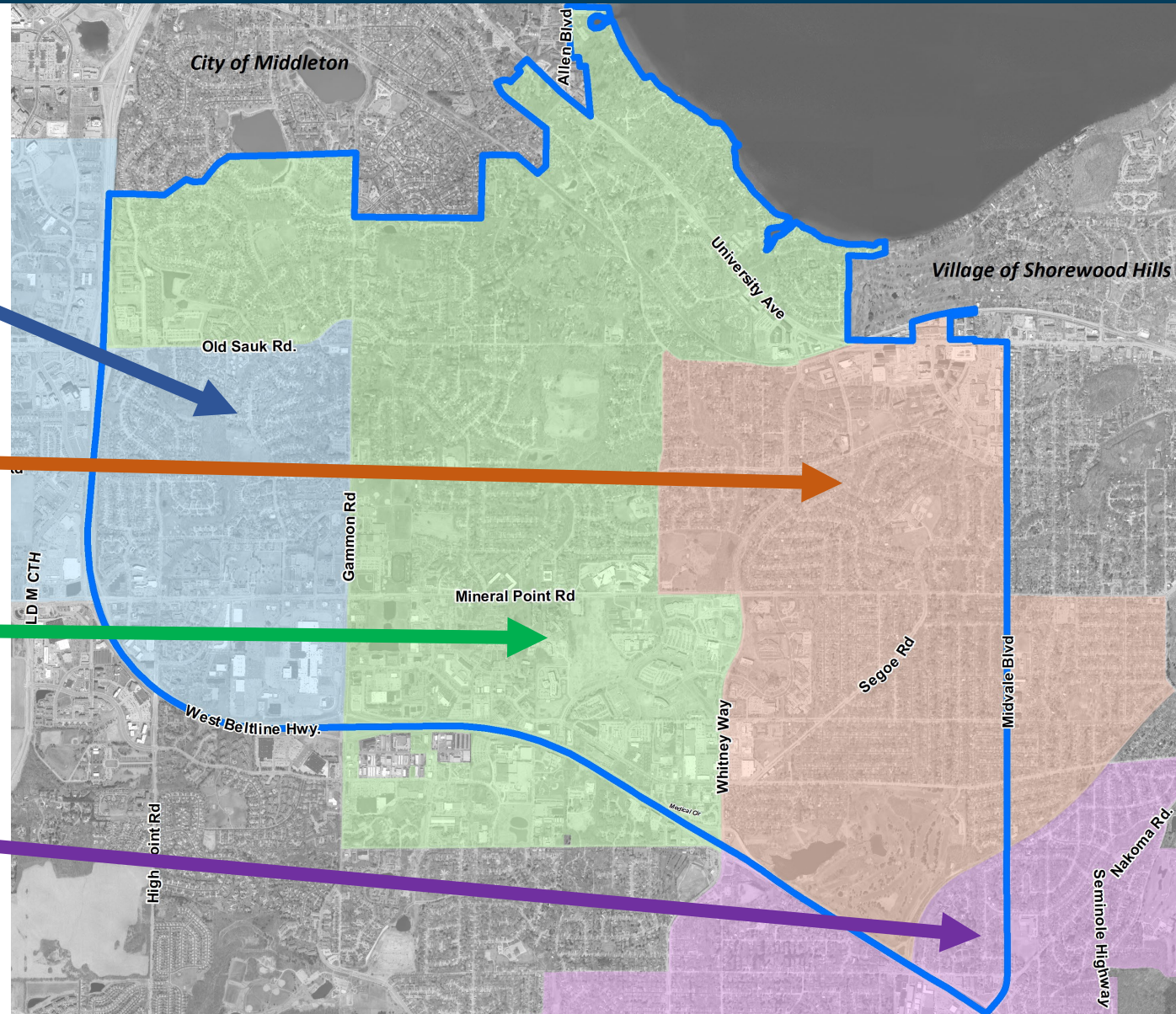


May 10, 2023

Elected Officials


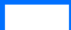


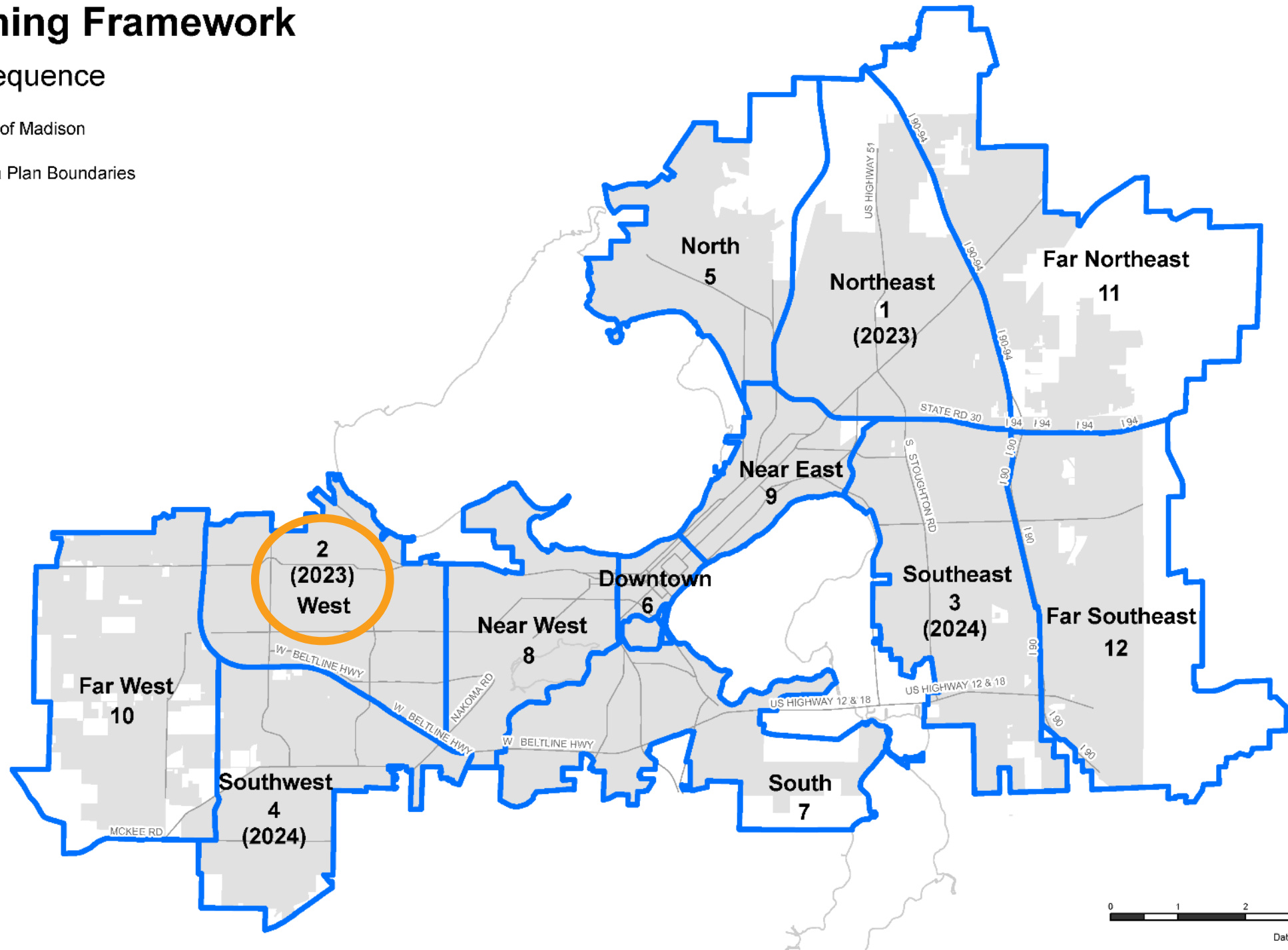
- Mayor Satya Rhodes-Conway
- District 9 Alder Nikki Conklin
- District 11 Alder Bill Tishler
- District 19 Alder Kirsten Slack
- District 10 Alder Yannette Figueroa Cole

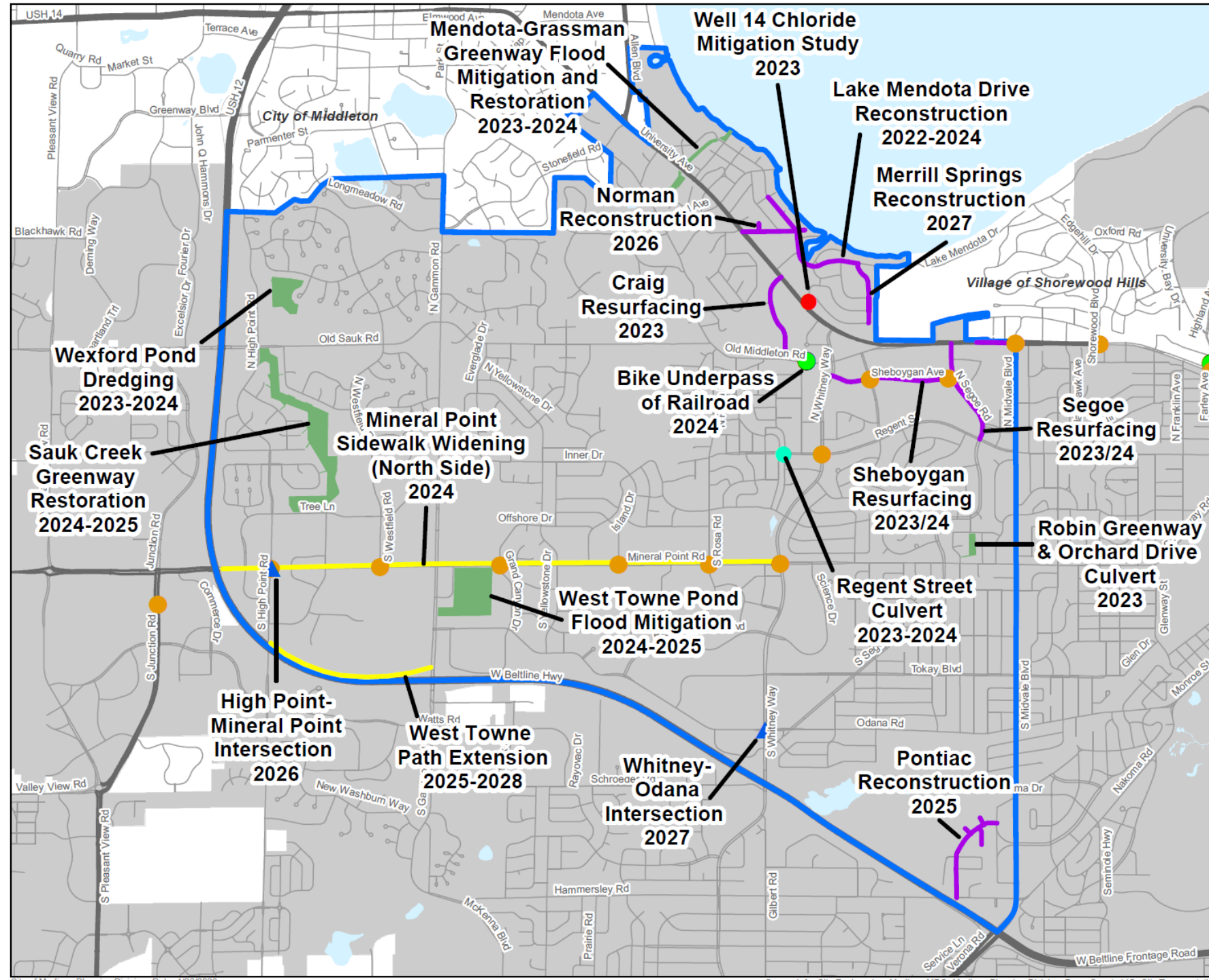


Planning Framework

Plan Sequence

-  City of Madison
-  Area Plan Boundaries





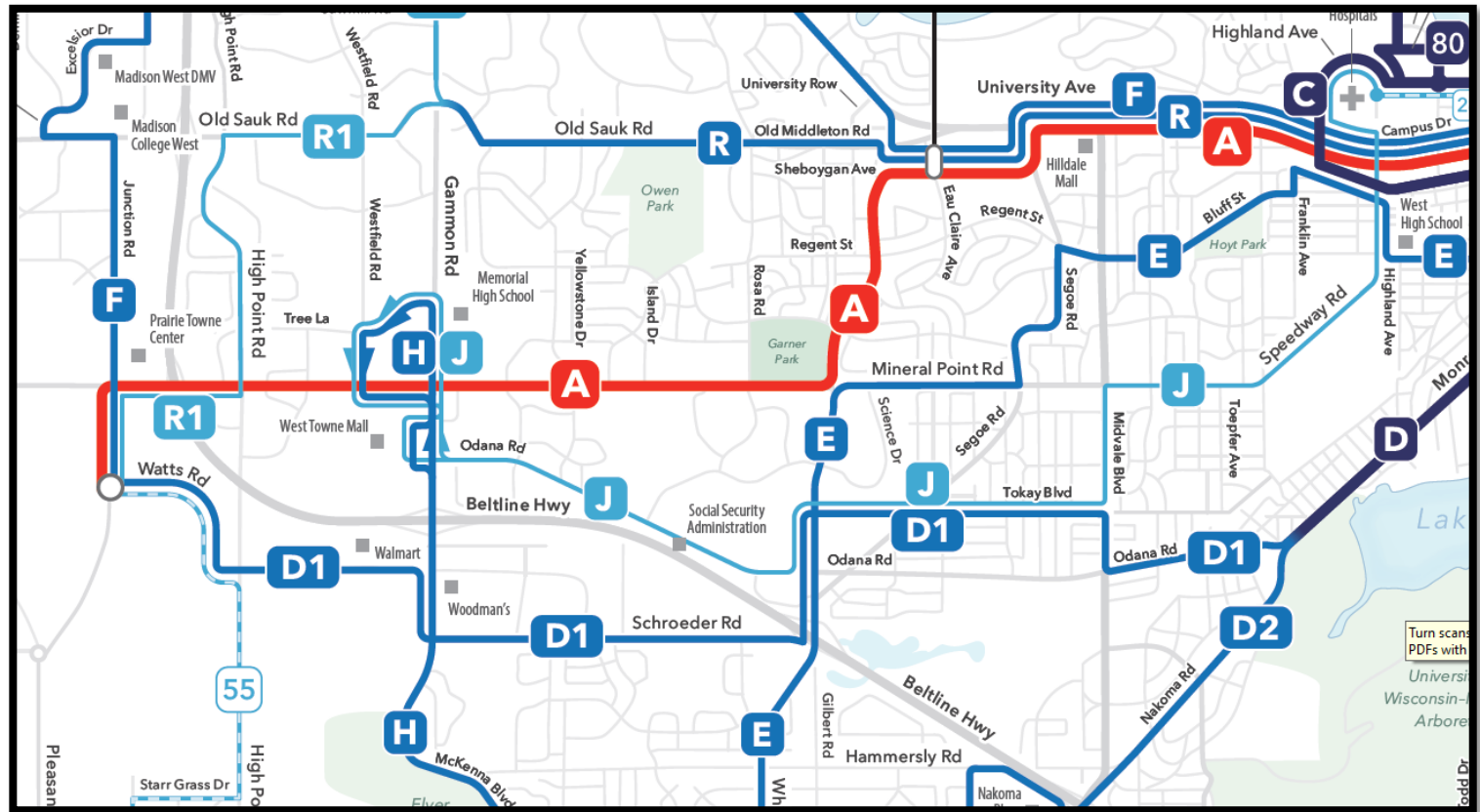
Departments & Divisions Present



Department	Projects	Staff
Metro Transit	Network Redesign, Bus Rapid Transit (BRT)	Jesse Stammer
Engineering – Streets & Paths	Street Reconstruction/Resurfacing Projects, Bike Underpass of RR	Chris Petykowski
Engineering – Stormwater	Greenways, Watershed Studies	JoJo OBrien
Transportation	Vision Zero, Safe Streets Madison	Renee Callaway
Parks	Parks Development Planning	Sarah Grimalkin
Water Utility	Well 14 Chloride Mitigation Study	Joe Demorett
Community Development	Affordable Housing	Linette Rhodes
Planning	West Area Plan	Linda Horvath, Ben Zellers, Breana Collins

Network Redesign

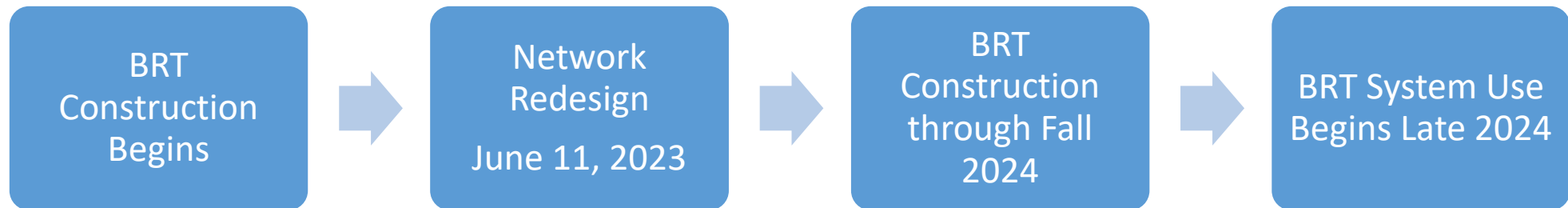
- **June 11th, 2023**
Network Redesign (new bus routes)
- Includes route A
- Route A to become Bus Rapid Transit (BRT) late 2024



Network Redesign and Bus Rapid Transit (BRT)

- Network Redesign updates bus system
 - Mineral Point construction began Spring 2023
 - Along Mineral Point and High Point, Westfield, Grand Canyon, Island, Rosa, and Whitney.
 - Whitney & Regent, Sheboygan & Eau Claire, and Sheboygan & Segoe

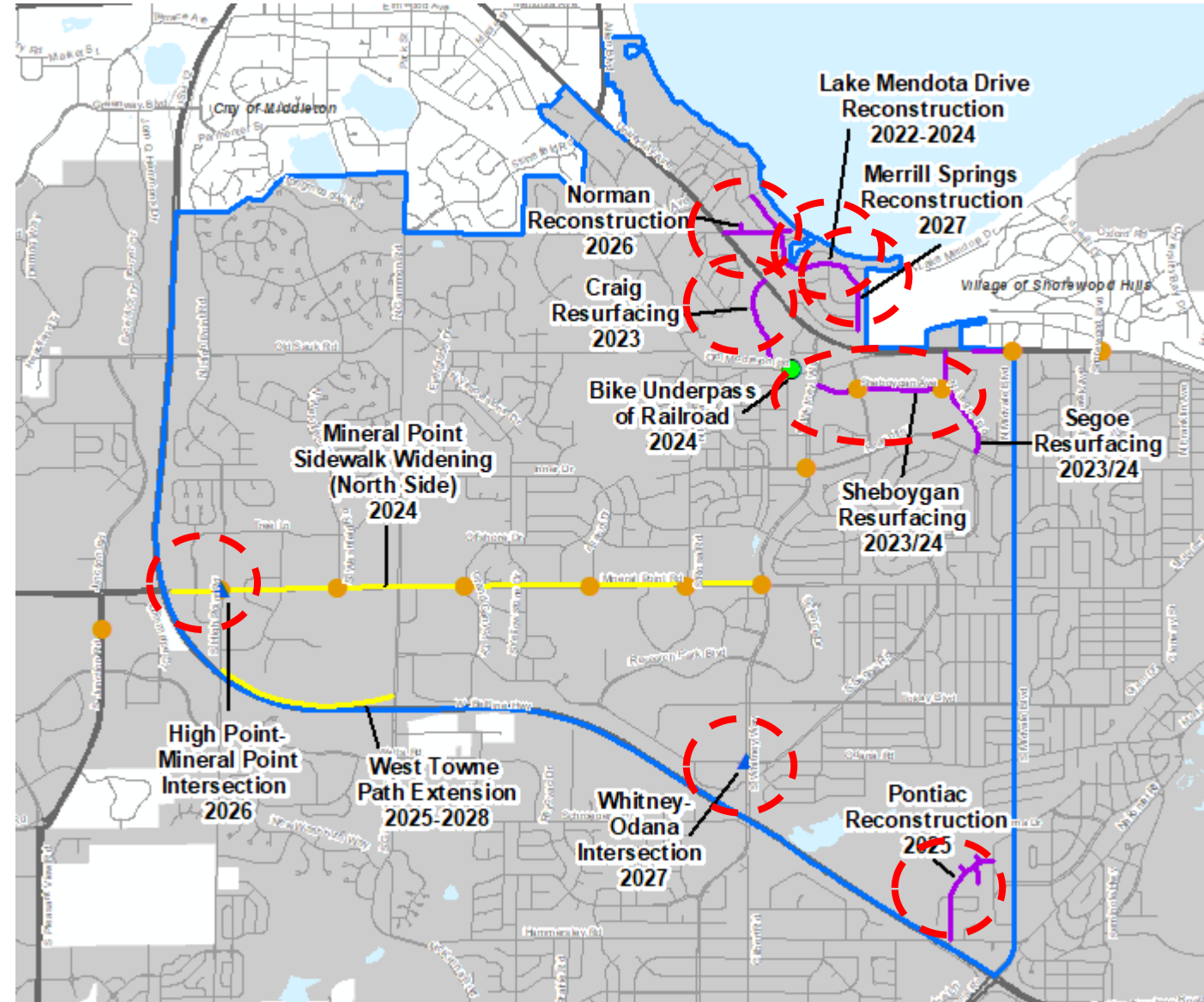
Timeline:



Engineering – Streets & Paths



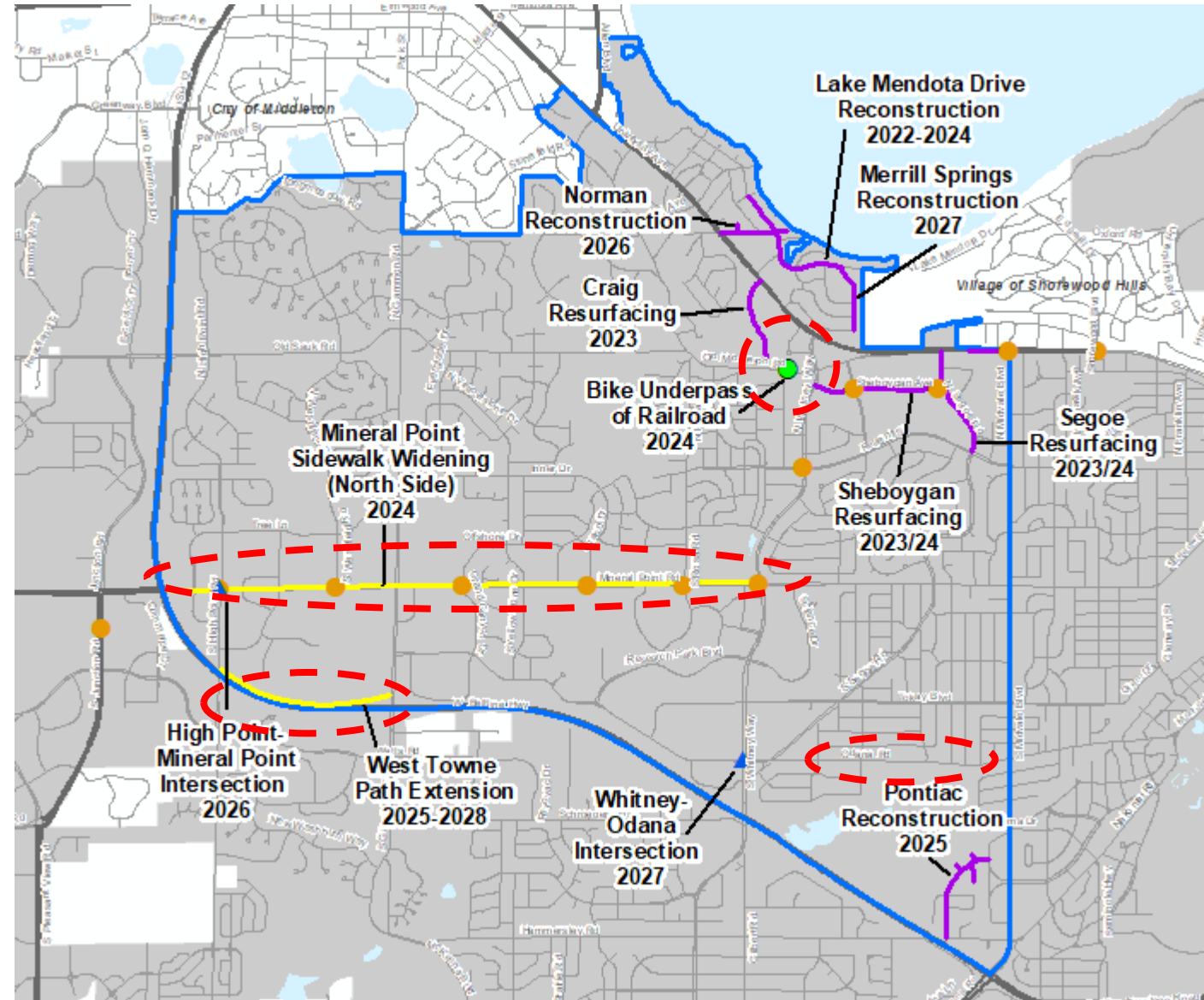
- 2023 Street Work
 - Craig Ave Resurfacing
 - Lake Mendota Dr Reconstruction
- 2024 Street Work
 - Segoe/Sheboygan Resurfacing
- 2025 and Beyond
 - Pontiac Tr Reconstruction
 - Norman Ave Reconstruction
 - Mineral Point/High Point Reconstruction
 - Whitney/Odana Intersection
 - Merrill Springs Reconstruction



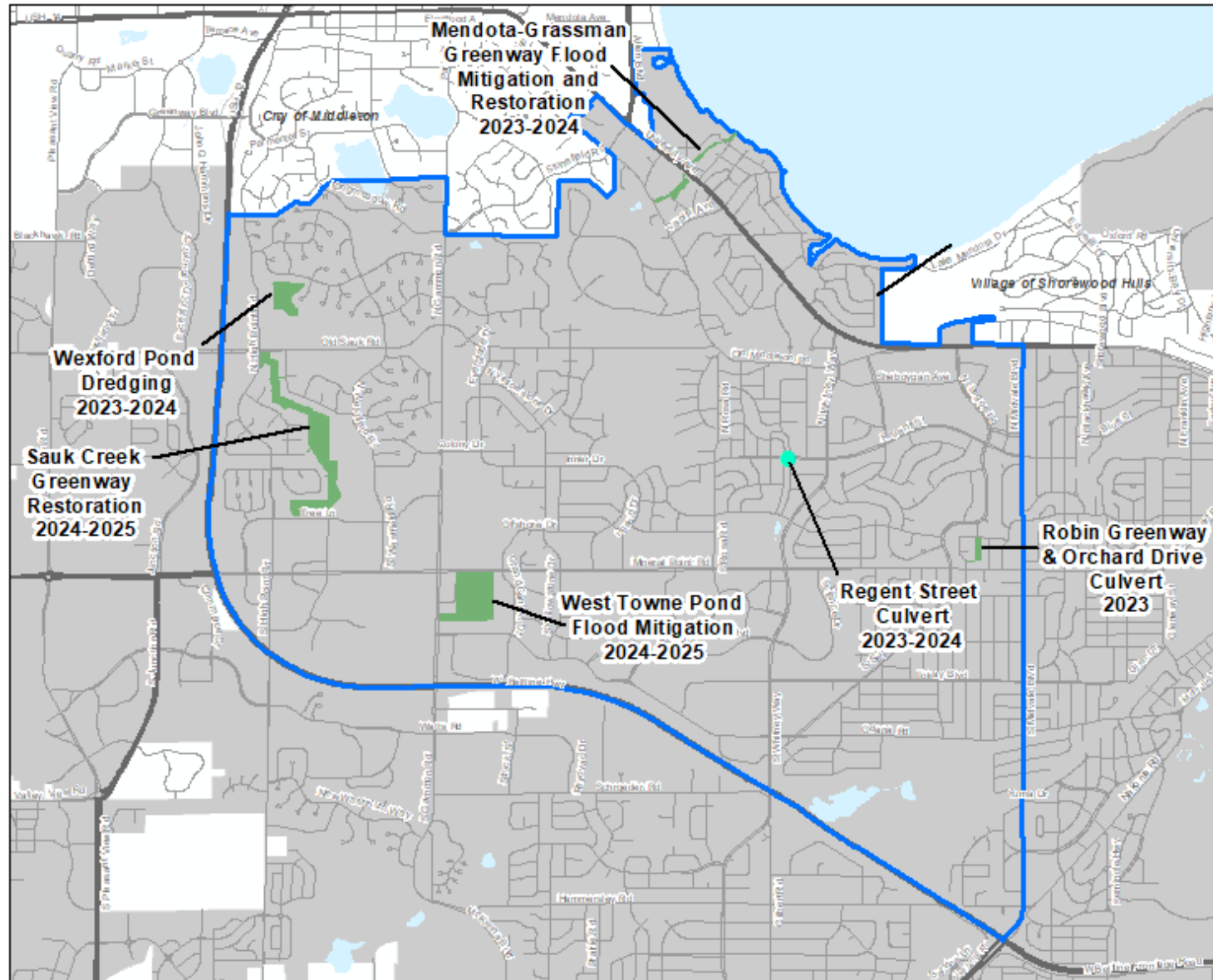
Engineering – Streets & Paths



- 2024 Path Work
 - Mineral Point Rd Multi-Use Path
 - Odana Rd Cycle Track
 - Old Middleton Underpass
- 2025-28 Path Work
 - West Towne Path



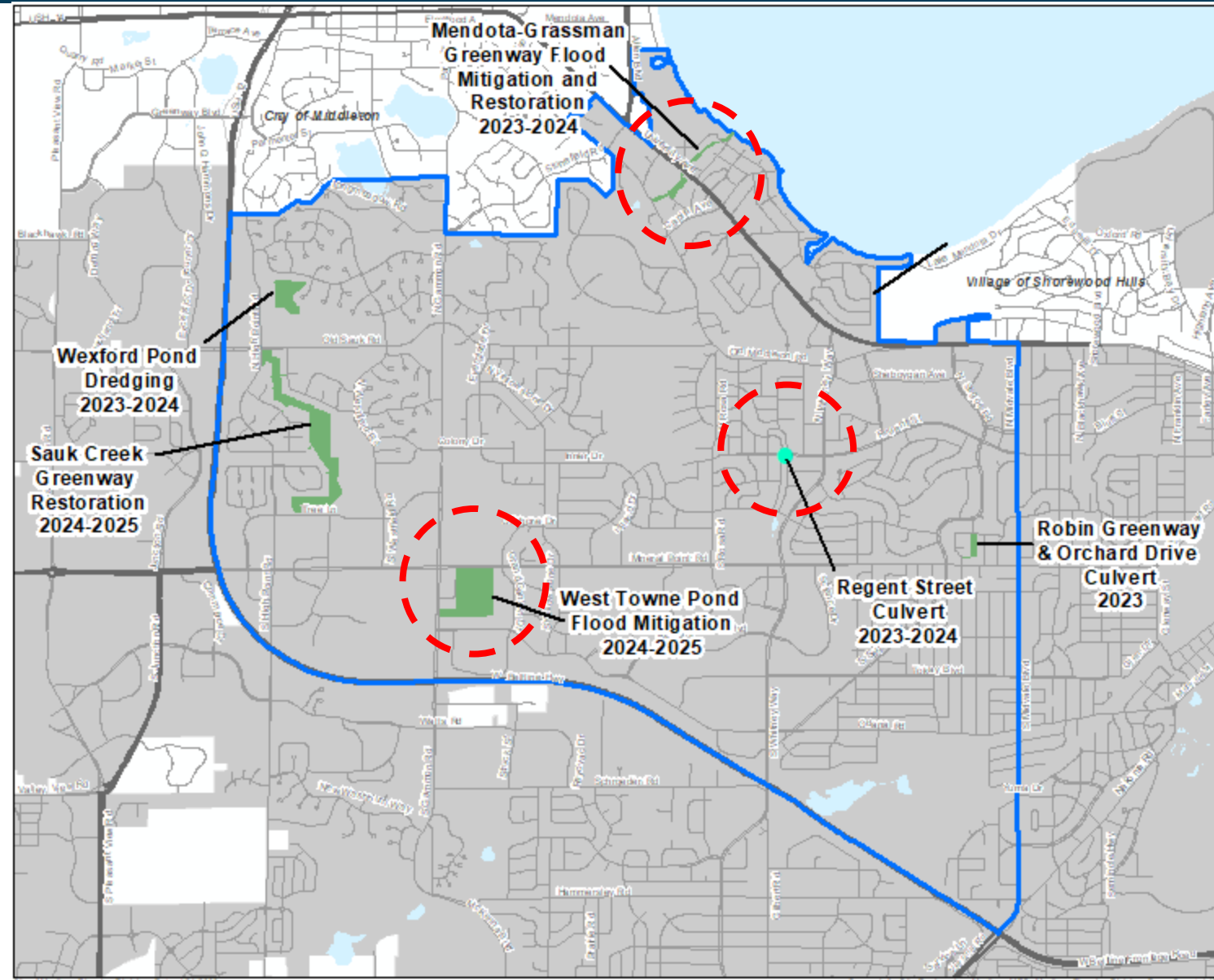
Stormwater Projects



Stormwater Projects: Flood Reduction



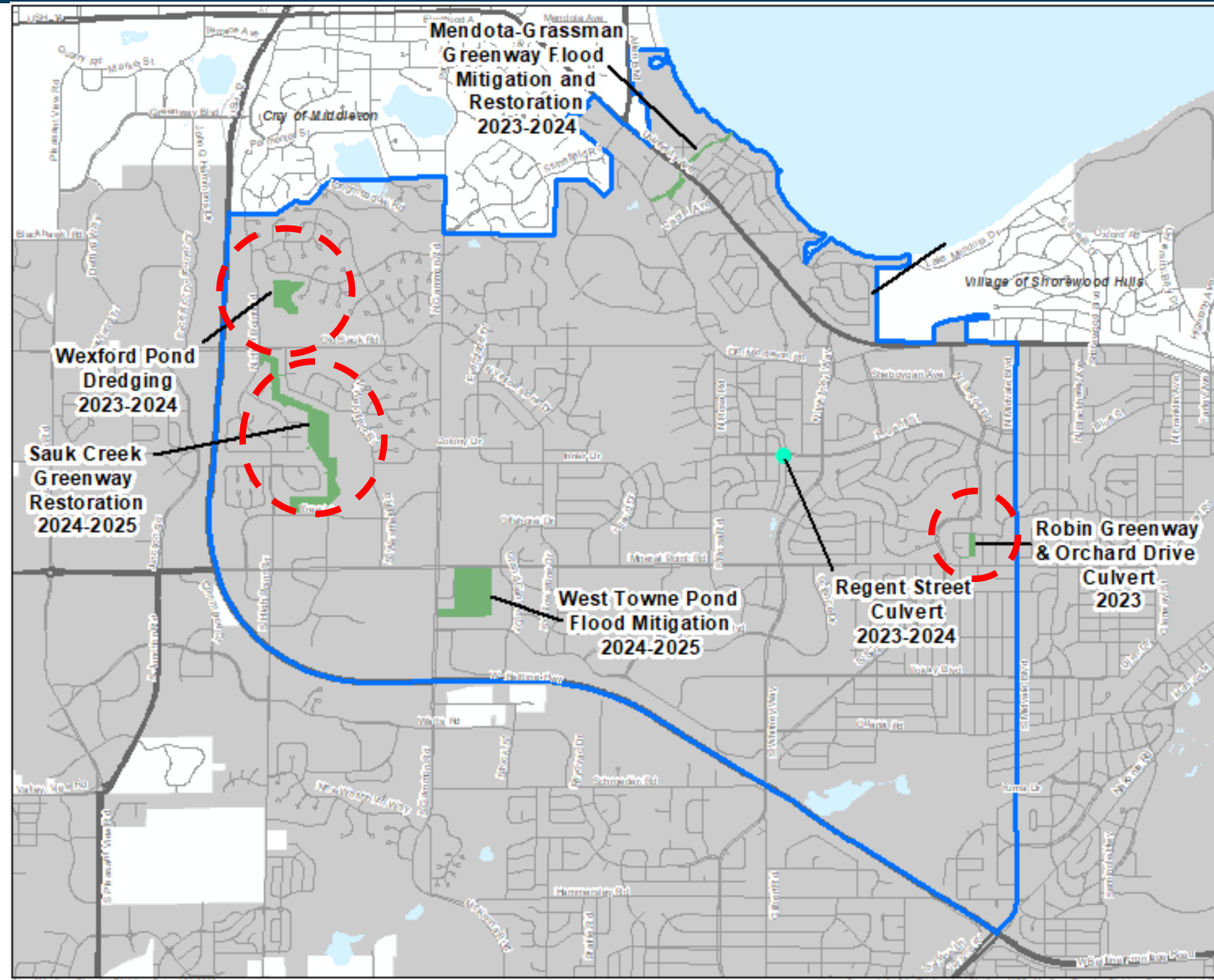
- Mendota Grassman Greenway Flood Mitigation and Restoration, 2023-2024
- West Towne Pond, 2024-2025
- Regent St Culvert, 2023-2024
 - Replace culvert—looking at potential for flood mitigation
- Spring Harbor Watershed Study
 - Incorporating public comment into modified solutions



Stormwater Projects: Water Quality



- Objectives:
 - Improve water quality in lakes
 - Improve maintenance access
 - Restoration
- Projects:
 - Wexford Pond Dredging, 2023-2024
 - Sauk Creek Greenway, Corridor Planning (next 2 years)
 - Robin Greenway & Orchard Dr Culvert 2023



Transportation: Vision Zero



- Goal: Reduce all traffic deaths and severe injuries on city streets to zero by 2035.
- Traffic safety focus that prioritizes human life over the movement of motor vehicles.

Transportation: Safe Streets Madison

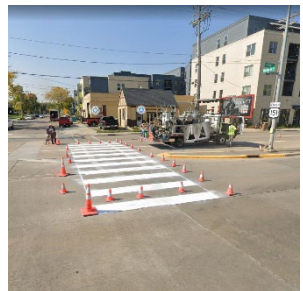


Funding program focused on safety for all transportation modes and improving connectivity for walking & biking

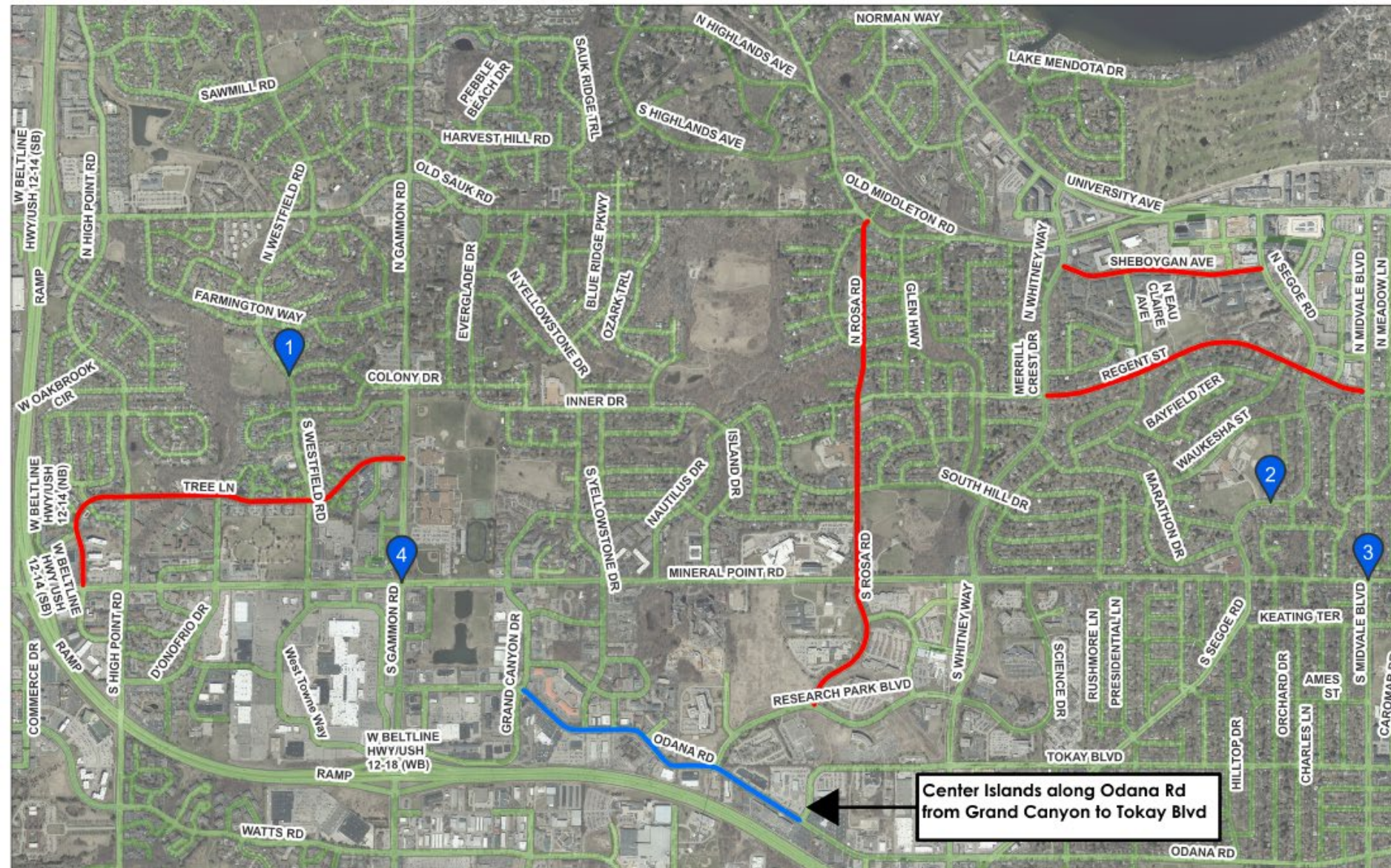


Program Priorities

- Implement traffic safety measures in a fair and equitable manner to eliminate traffic deaths and serious injuries on City streets
- Improve connectivity by closing gaps in the City's pedestrian and bicycle networks and ensure they are accessible for people of all ages and abilities



Transportation: Upcoming Projects



Legend

— Speed Limit Reductions

— Other Safety Improvements Line

West Field Rd

1 Traffic Calming

Segoe at Richland

2 Pedestrian Refuge Island

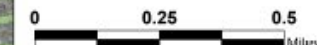
Midvale at Mineral Point Rd

3 No Turn on Red, High Visibility Crosswalks

Gammon at Mineral Point Rd

4 Pedestrian Refuge Island

Center Islands along Odana Rd
from Grand Canyon to Tokay Blvd



Green & Resilient: Parks



- Park Classifications:

- Conservation Park (like Owen): *Primary purpose to preserve Madison's native landscapes, plants and animal populations*
- Community Park (like Garner): *Typically greater than 20 acres, these parks serve a broader purpose than a neighborhood park. They focus on meeting community-based recreation needs, as well as preserving unique landscapes and open spaces*
- Neighborhood Park: *Greater than 5 acres, neighborhood parks remain the basic unit of the park system. These parks serve as the recreational and social focus of the neighborhood*
- Mini Park: *Fewer than 5 acres and used to address limited, isolated, or unique recreational needs*

Green & Resilient

Park Development Plans:

A guide to park improvements planned in the coming 10 to 15 years at Neighborhood and Mini Parks

- Park's existing conditions
- Recent improvements
- Planned improvements
- Planned expansion, if any



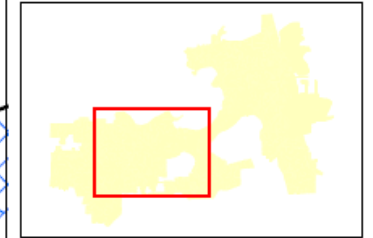
Water Utility – Well 14



UW 14

- Located at 5130 University Ave.
- Drilled in 1960
- 715' Deep - Two Aquifer Well
- 750 Million Gallons per Year
- Elevated Levels of NaCl

Well 14 Influence Zone 2/19/2019



Legend

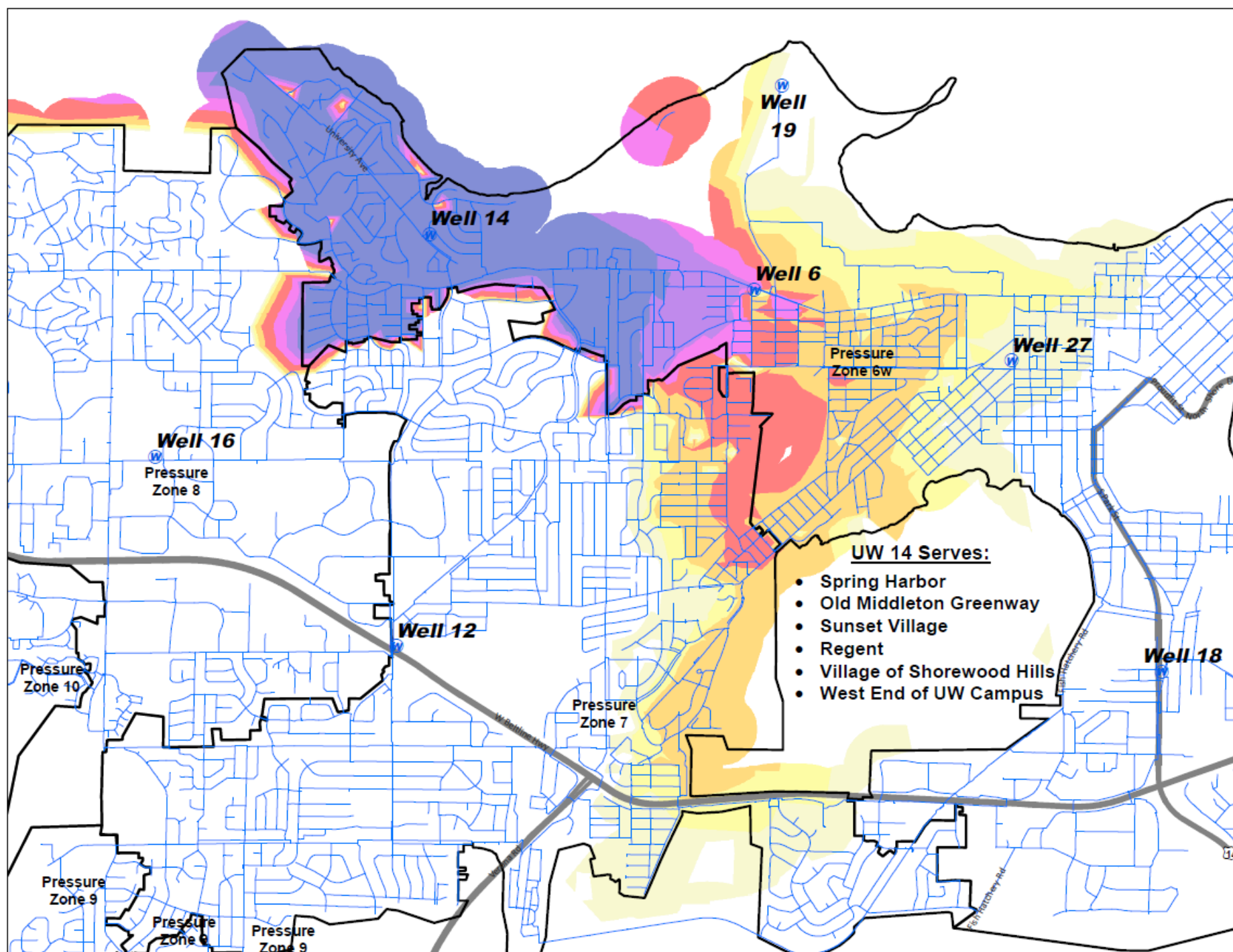
- Unit Well
- Water Main
- Pressure Zone Boundary

Well Source %

- 80 - 100
- 60 - 80
- 40 - 60
- 20 - 40
- 10 - 20
- 5 - 10
- 1 - 5

UW 14 Serves:

- Spring Harbor
- Old Middleton Greenway
- Sunset Village
- Regent
- Village of Shorewood Hills
- West End of UW Campus



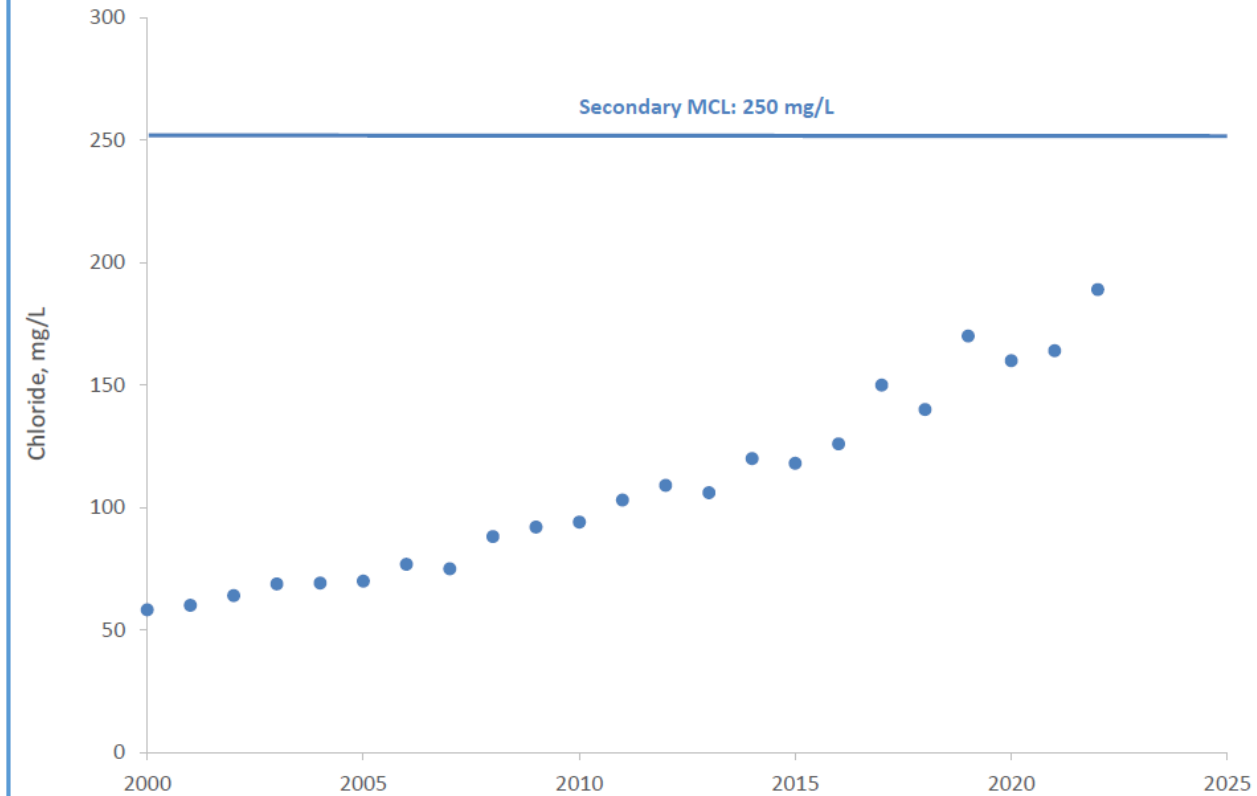
**Madison
Water Utility**

Disclaimer: The City of Madison makes no representations about the accuracy or completeness of these records and in no event shall the City be liable for any damages whatsoever resulting from the use of these records.
The information provided is based on computer simulations of 2017 operating conditions. This information will be updated every three to five years, or as necessary, to reflect general changes in operating conditions, such as the development of new water sources and the abandonment of older ones.

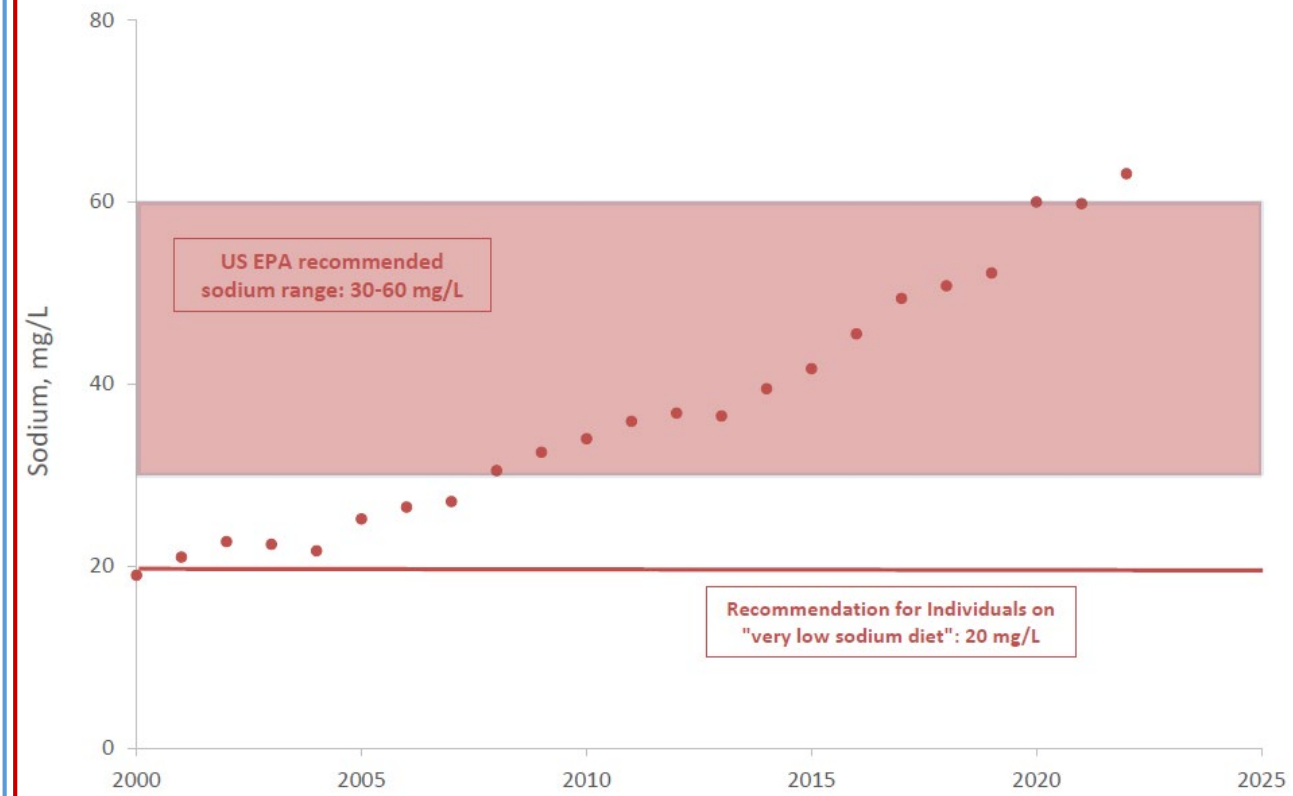
Water Utility – Well 14



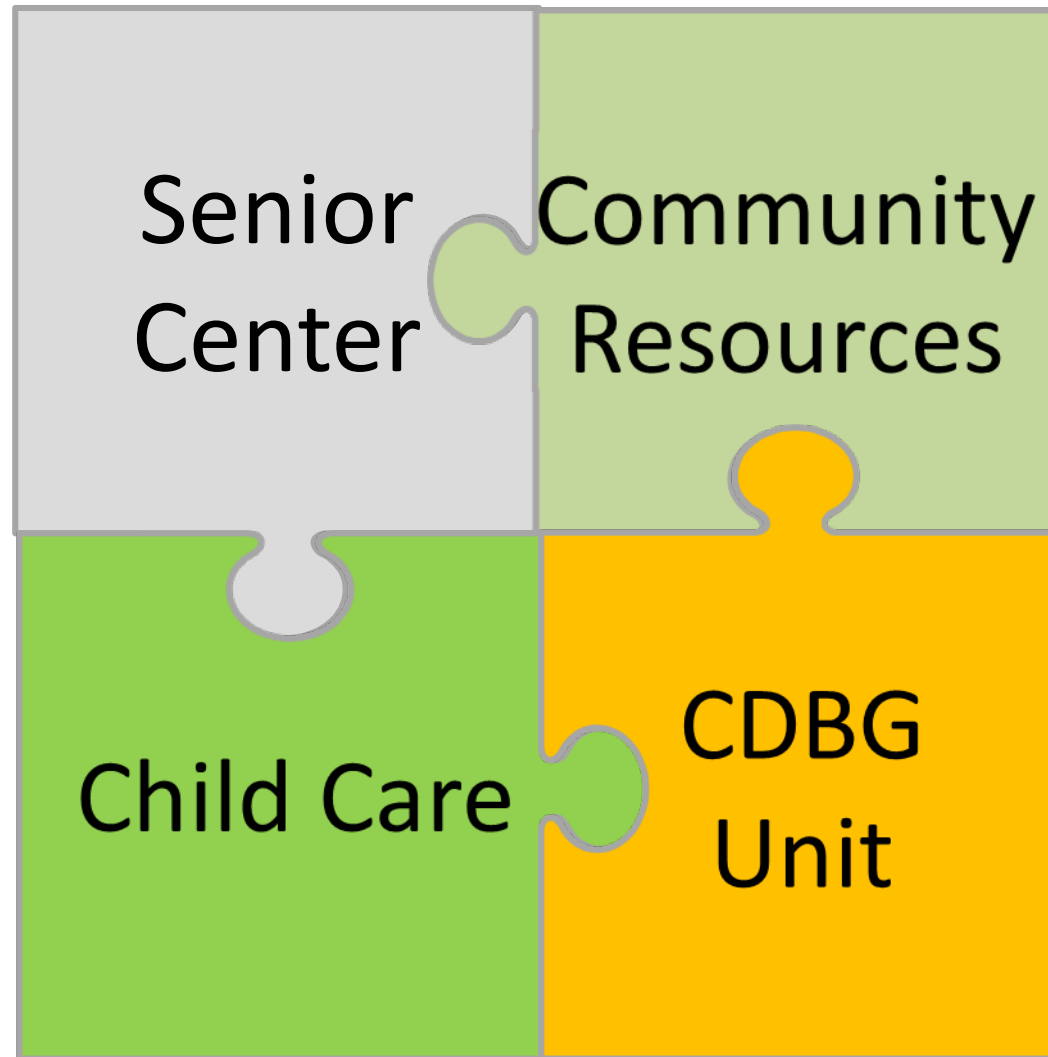
Well 14 Chloride Data: 2000 to 2022



Well 14 Sodium Data: 2000 to 2022



Community Development Division



Community Development Division



- Housing Forward: Meeting Housing Needs for All in a Growing City

Increase Housing
Choice

Create Affordable
Housing
throughout the
City

Combat
Displacement and
Segregation

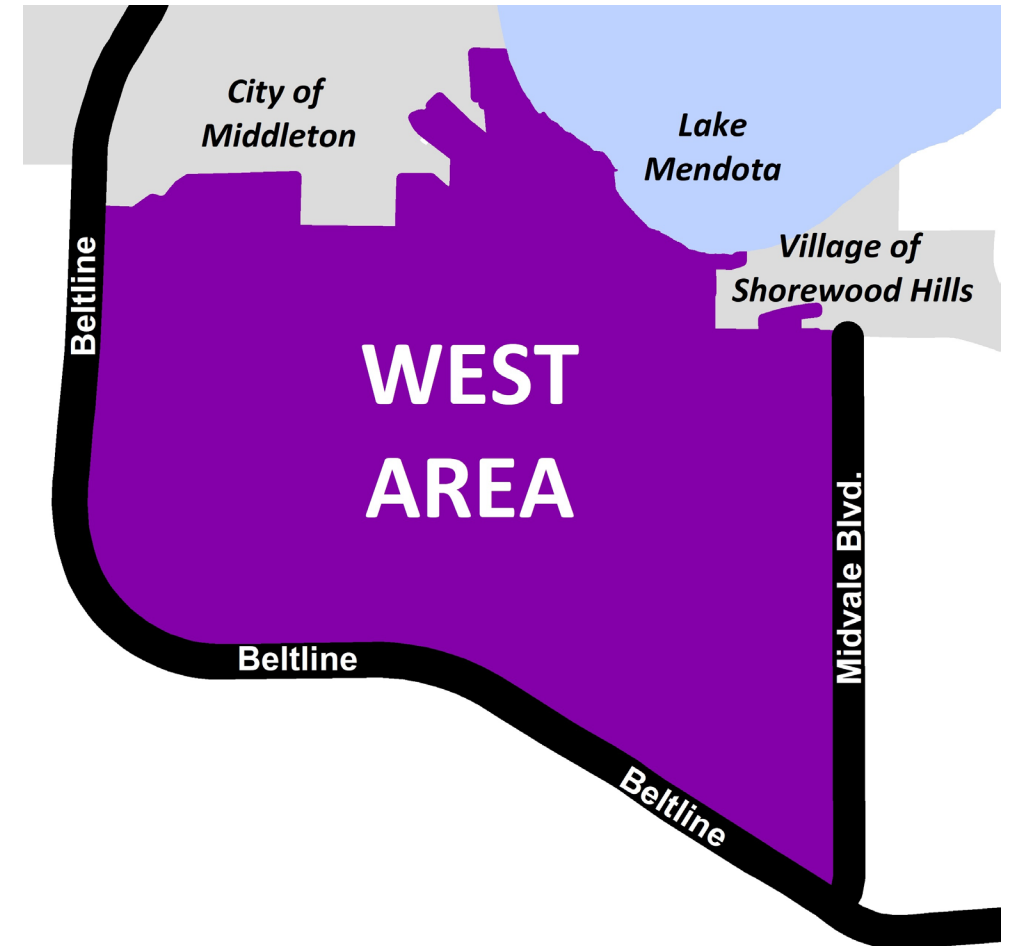
Ensure Seniors and
Others Can Stay in
Their Homes

Work to End
Homelessness

West Area Plan



- Area Plans guide future physical changes:
 - Land use and growth/redevelopment
 - Transportation (roads, pedestrians, bicycle network, transit)
 - Parks and Open Space
 - Stormwater Management, Utilities, Public Facilities
- Use previously adopted plans as a starting point.
- Feedback received will inform plan development and various City initiatives



West Area Plan



- Include an emphasis on reaching residents and communities typically underrepresented in City processes
- Feedback received will inform plan development and various City initiatives
- Project website: www.cityofmadison.com/westplan