

City of Madison Engineering Division

John Nolen Drive Reconstruction

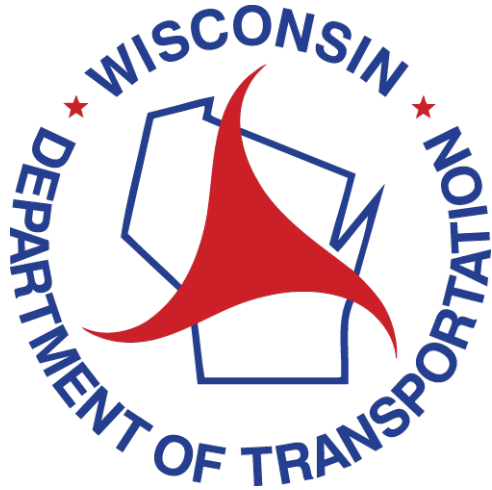
Project I.D. 5992-11-20
City of Madison, John Nolen Drive
(Olin Avenue – Broom Street)



Public Information Meeting #4
Pre-Construction (Phase 1)
September 22, 2025



Project Team



U.S. Department of Transportation
**Federal Highway
Administration**



Engineering



Zenith Tech

A WALBEC COMPANY

Rules and Housekeeping Items

- This meeting will be recorded and posted to the project page.
- All attendees should be muted to keep background noise to a minimum.
- Use the “Q and A” button for technical issues with meeting to troubleshoot with staff to assist.
- Use the “Q and A” button to type questions about the presentation. Questions will be answered live after the presentation.
- Inappropriate questions may be dismissed.
- Use the **“raise your hand”** button to verbally ask your question. You will be prompted to unmute when it is your turn.

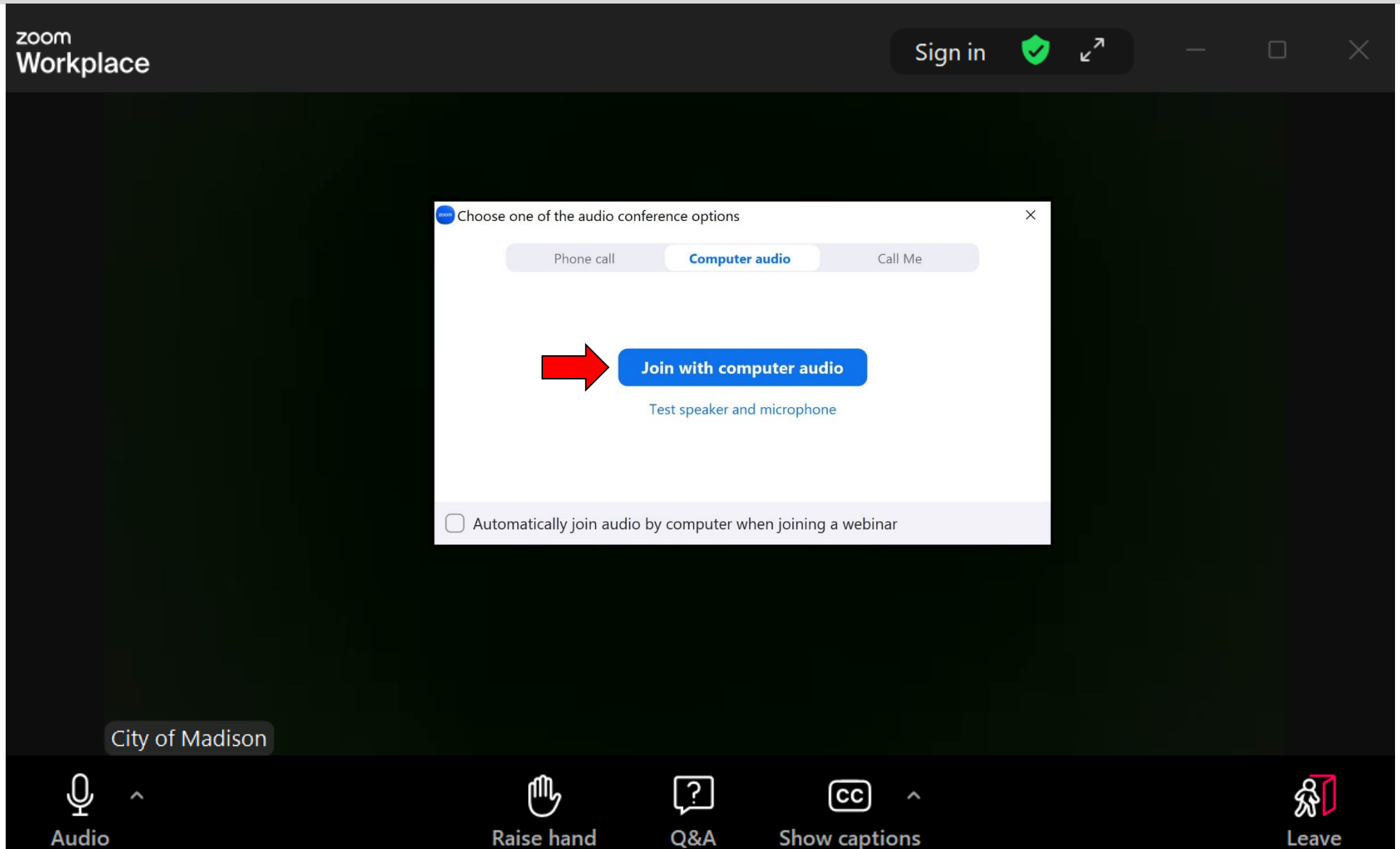
Recording

This meeting is being recorded.

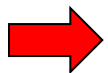
It is a public record subject to disclosure.

By continuing to be in the meeting, you are consenting to being recorded and consenting to this record being released to public record requestors.

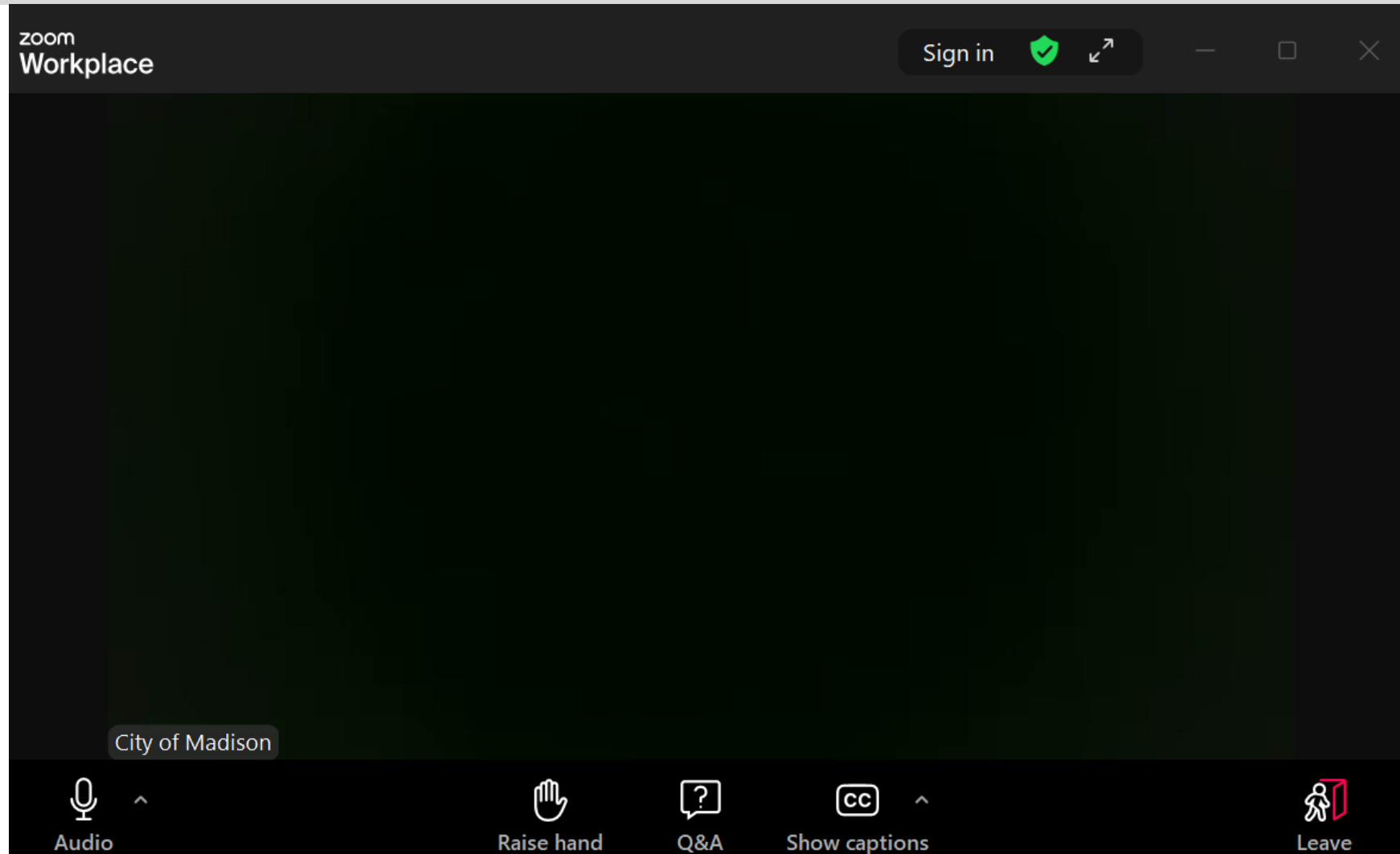
How to Participate



**Make sure to
join audio**

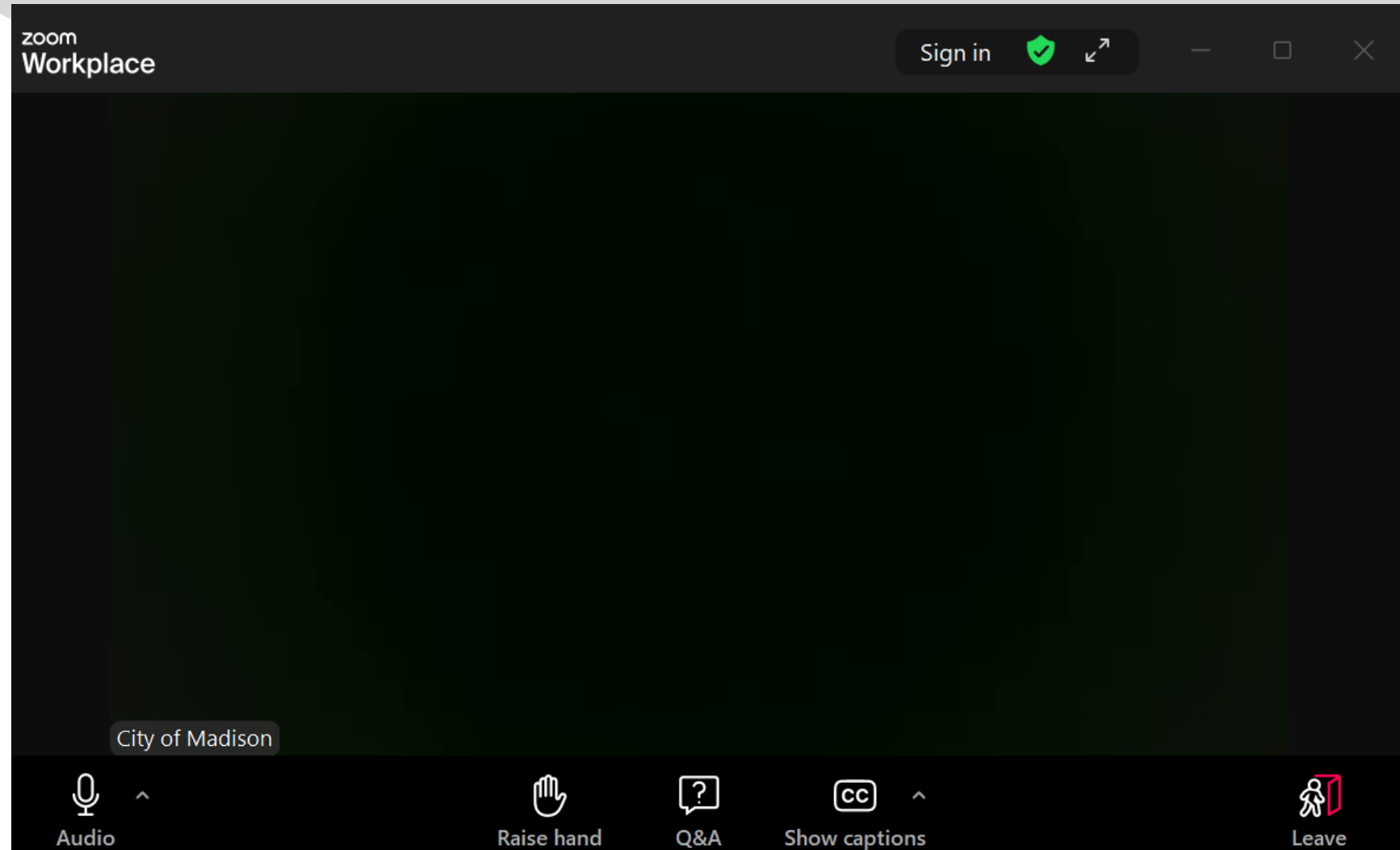


How to Participate



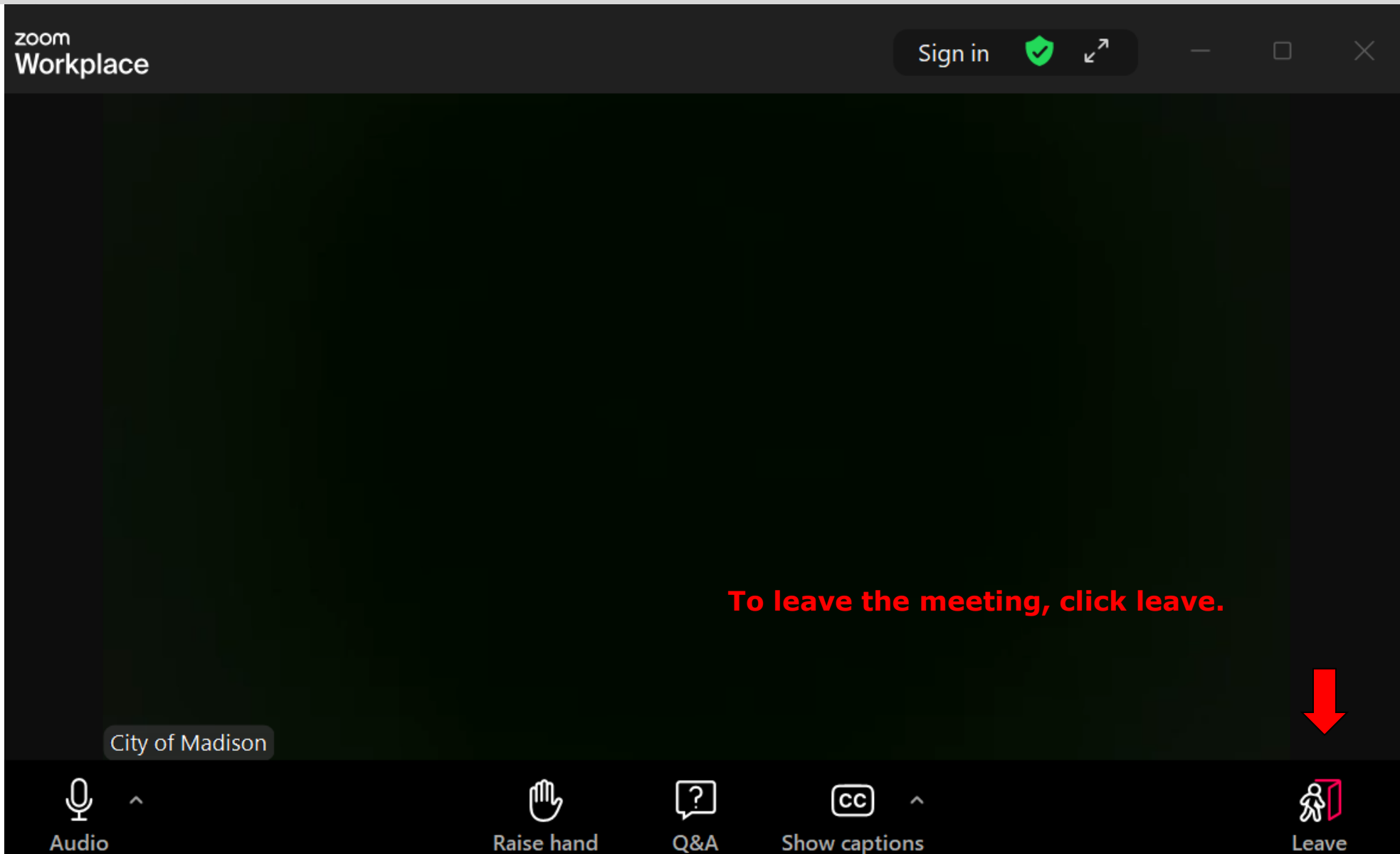
Raise your hand to be unmuted
For comments or ask additional questions.

How to Participate

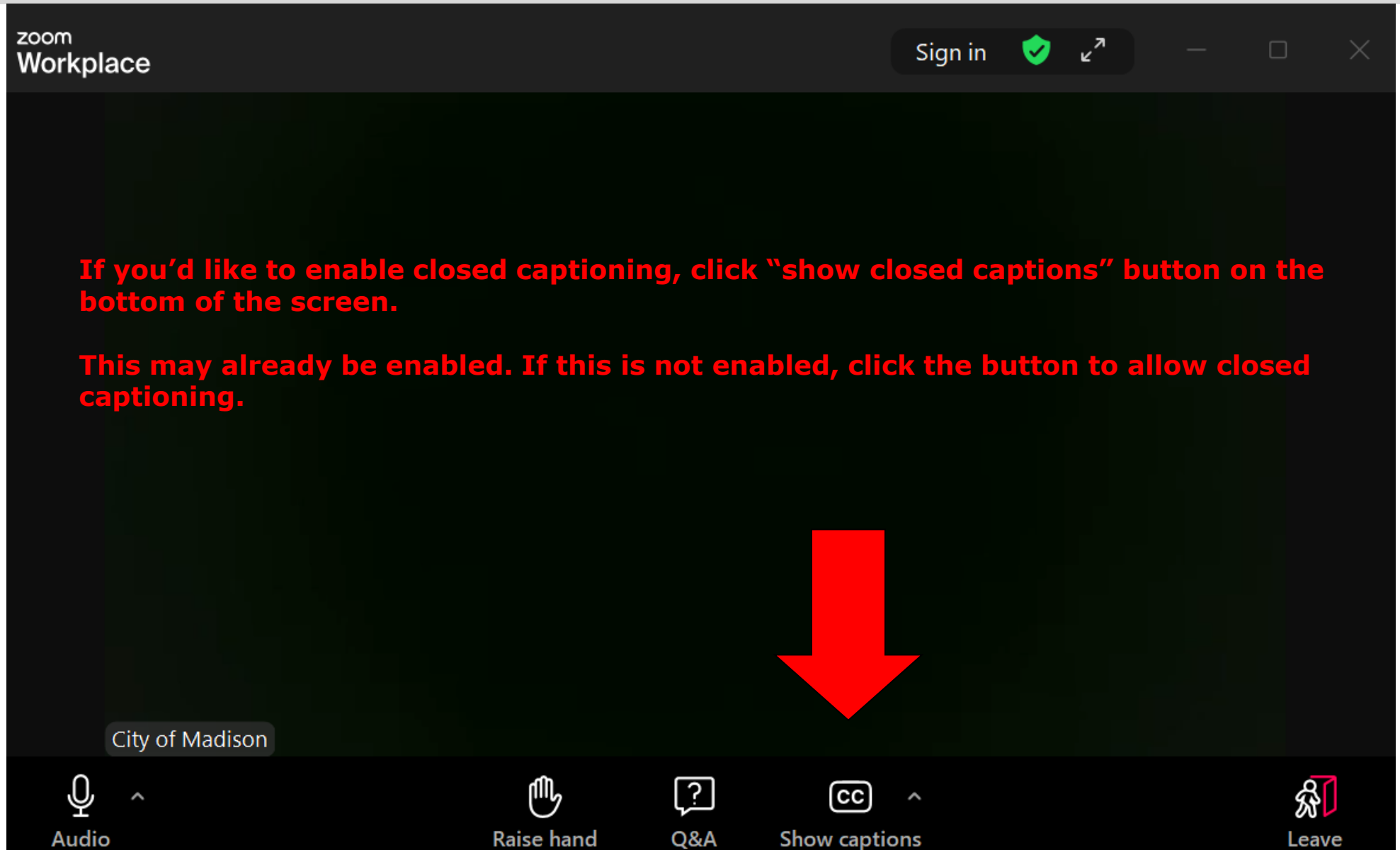


Use **Q&A button** if you have technical issues or a question for the panelists.

How to Participate



How to Participate



Discussion Ground Rules

- Respect your neighbors' time and perspectives.
- Focus your input on this proposed improvement.
- Ask clarifying questions as we go (e.g., explain a term or repeat a statement).
- Save other questions for the Q&A— they may be answered during the presentation!

Agenda

- Project Overview
- Proposed Improvements Overview
 - Roadway – Pathway – Shoreline – Lighting – Trees – Bridge Structures – Intersections – Stormwater
- Traffic Control & Staging
- Project Schedule - John Nolen Drive (Phase 1)
- Other Projects
 - John Nolen Drive (Phase 2)
 - John Nolen Drive (Phase 3)
 - North Shore Drive Pathway
 - Madison Lake Way
- Questions & Feedback

Project Overview

Phase 1: East Lakeside Street to Broom Street
Fall 2025 to Summer 2027

Phase 2: East Olin Ave to East Lakeside Street
Spring 2028 to Fall 2028

Phase 3: Beltline Highway to East Olin Ave
Spring 2029 to Fall 2029

Madison LakeWay: Olin Park to North Shore Drive
Summer 2027 to Spring 2028



Project Overview – John Nolen Drive Phase 1

- Gateway “ Iconic” Entrance to Downtown
 - Six (6) Lanes (Olin Ave to Lakeside St)
 - Four (4) Lanes (Lakeside St to Broom St)
- Causeway Bridges
 - Three (3) Connecting Lake Monona & Monona Bay
- Capital City Trail
 - Linking Olin Park and Law Park
- Lake Monona Shoreline
- Wisconsin & Southern Railroad (WSOR)

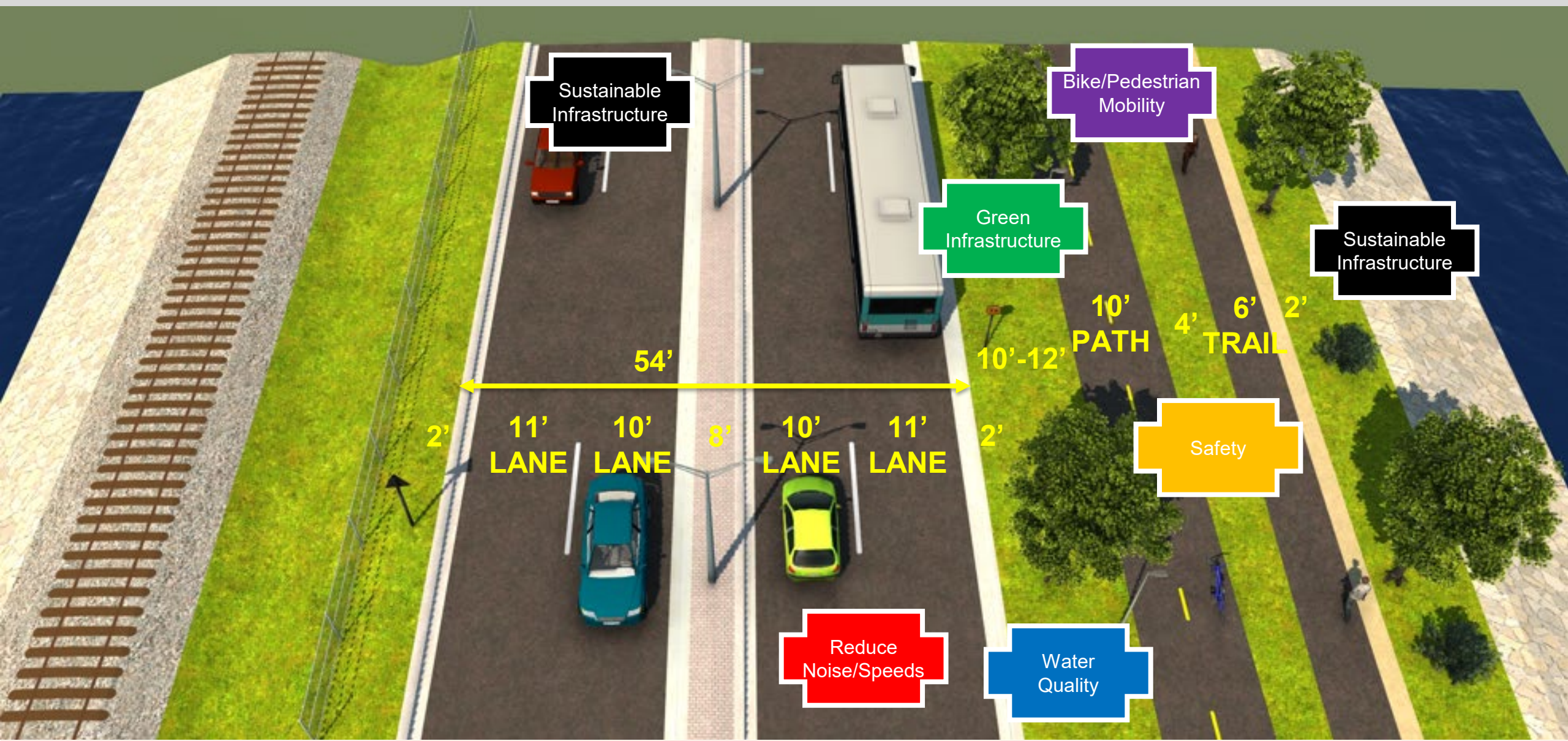


Project Needs

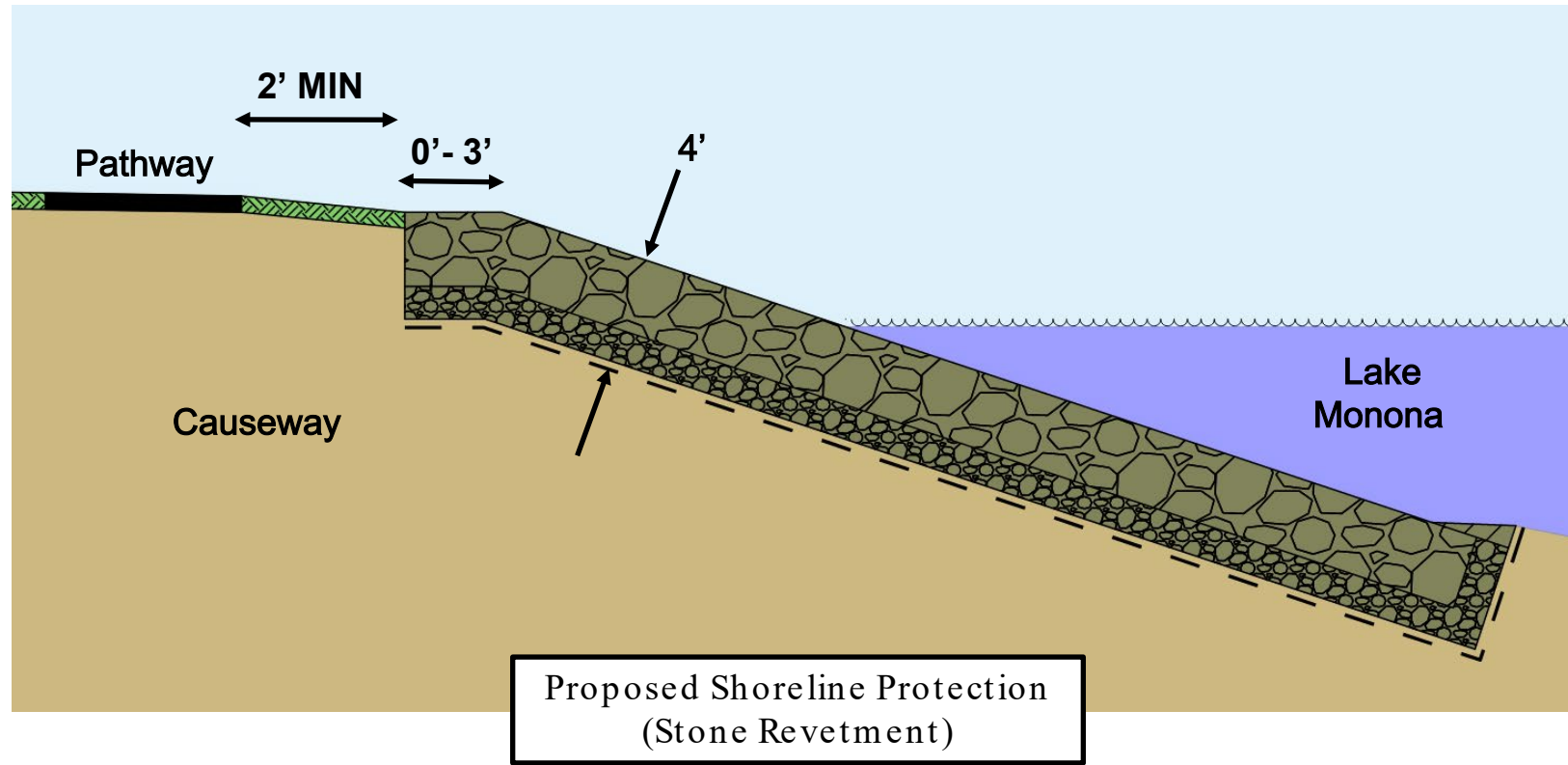
- Aging Roadway & Structural Infrastructure
 - Bridge Structure Condition
 - Roadway Condition
 - Shoreline Protection Condition
- Roadway Safety Issues
 - Corridor & Intersection Crash History
 - Bicycle & Pedestrian Conflicts
- Inadequate Bicycle & Pedestrian Facilities
 - Over-Capacity Crosswalks & Pathways
 - Pathway Connectivity & Mobility



Roadway – Pathway – Shoreline (Proposed)



Shoreline Revetment



Lighting (Roadway & Pathway)



NOTE: Pathway Lighting will be installed with the Madison Lake Way project

Trees (Removal, Prevention, & Replanting)



Existing Causeway Trees

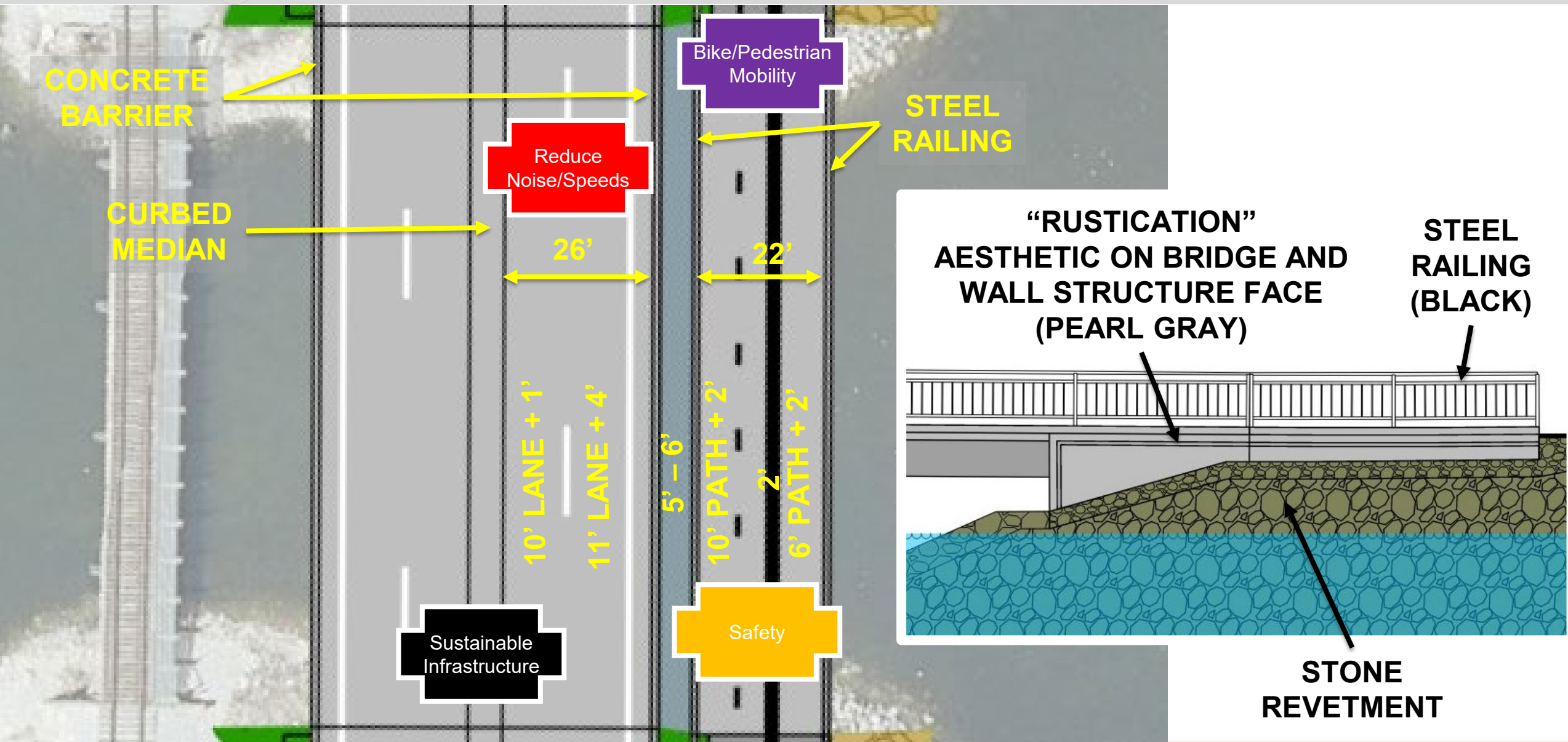


NOTE: Existing trees along the causeway will remain in-place during Fall 2025 and will be removed during Winter 2026



Existing Pathway Near Monona Terrace

Bridge Structures (Proposed)



North Shore Drive & Broom Street Area (Proposed)



MONONA BAY

NORTH
SHORE
DRIVE

Bike/Pedestrian
Mobility

BRITTINGHAM
PARK

Bike/Pedestrian
Mobility

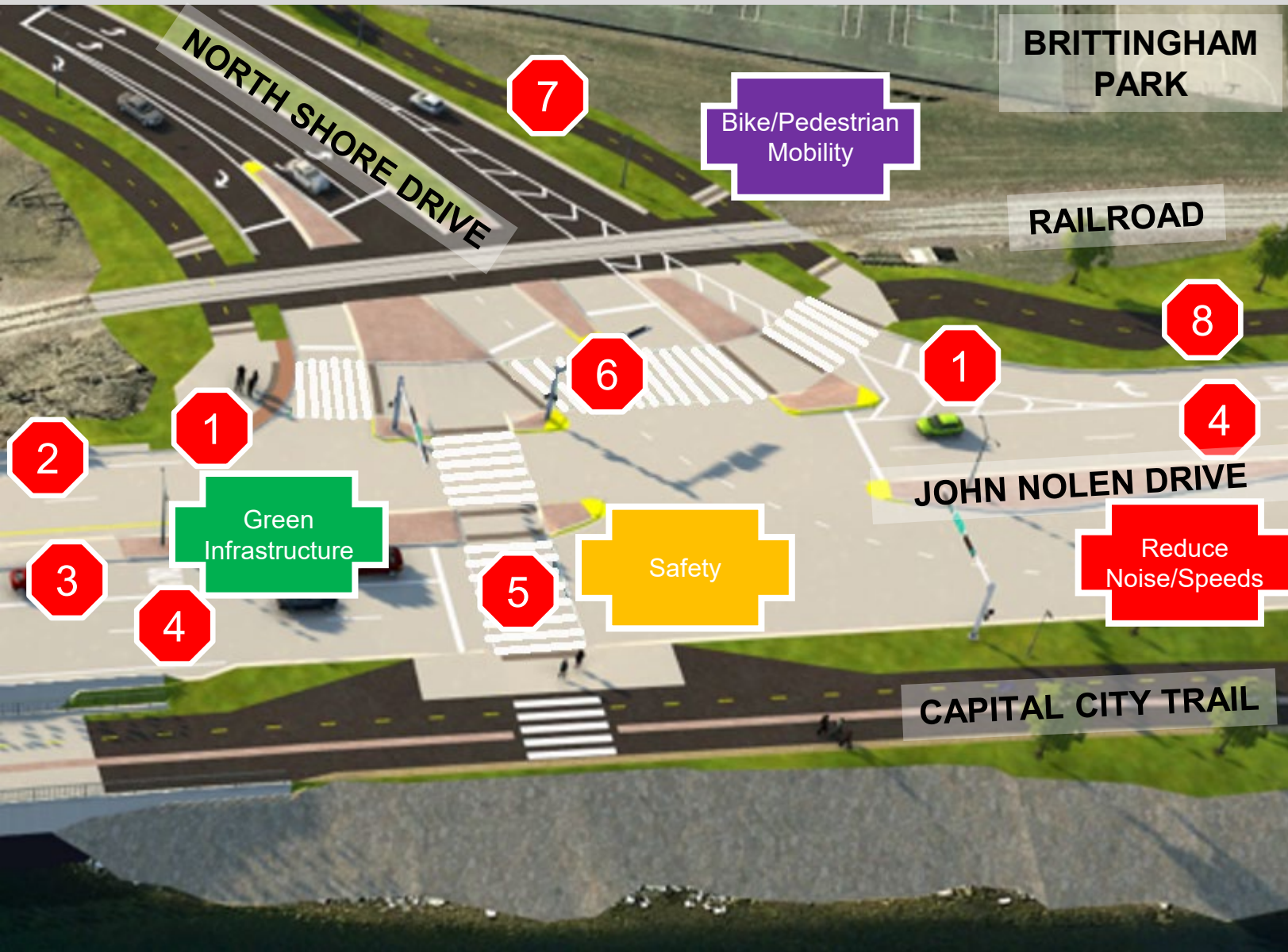
Reduce
Noise/Speeds

LAKE MONONA

JOHN NOLEN DRIVE
CAPITAL CITY TRAIL

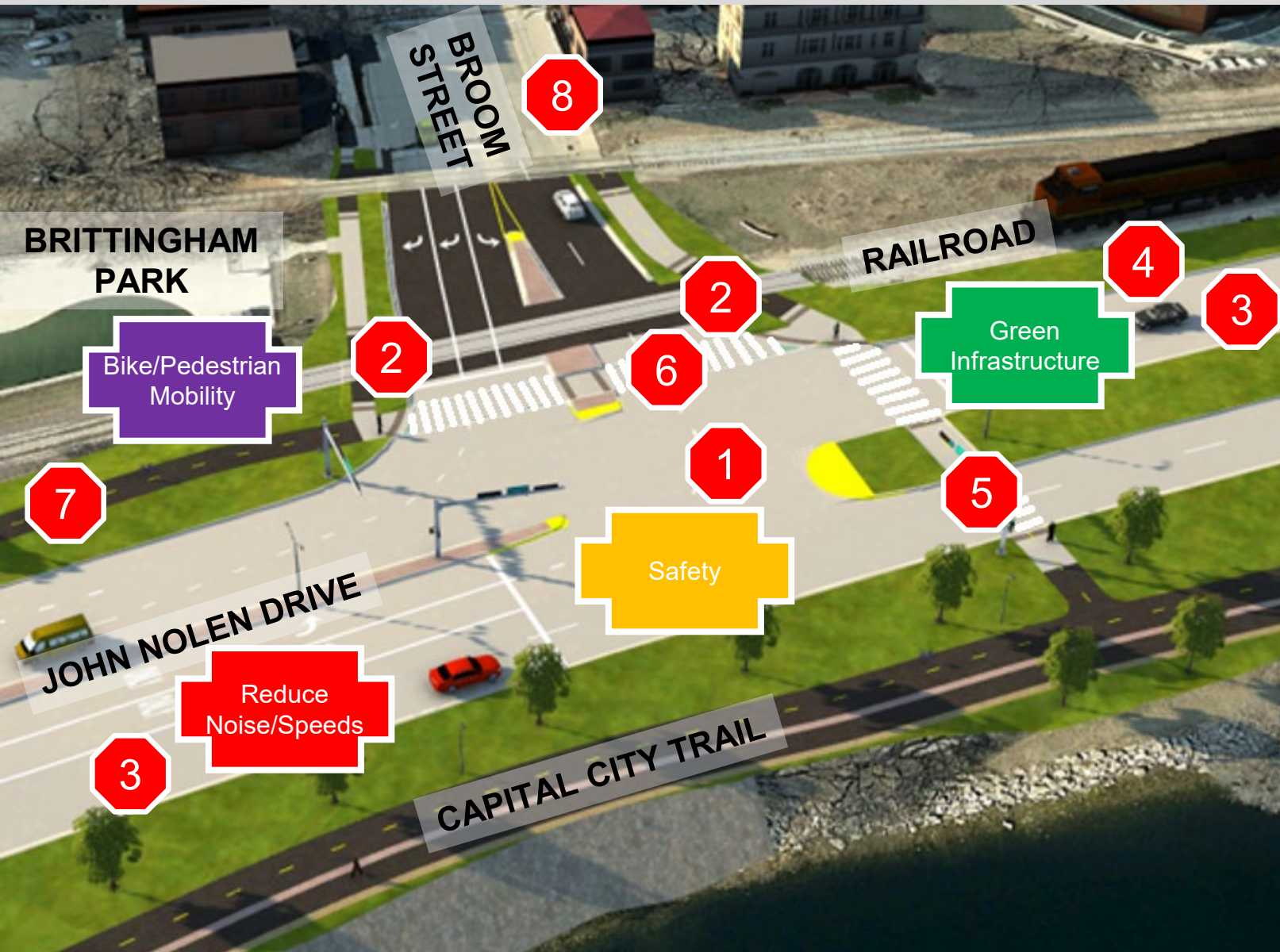
BROOM STREET

North Shore Drive Intersection (Proposed)



- (1) Smaller Radius Intersection
(Remove Free-Flow Movements)
- (2) Remove Southbound Merge Lane
- (3) Extend Northbound Left Turn Lane
- (4) Narrower Roadway Lanes
- (5) Crossing of John Nolen Drive (Single Stage)
(Reduced 34-ft)
- (6) Crossing of North Shore Drive
- (7) Pathway to Bedford Street & Bassett Street
- (8) Pathway to Broom Street

Broom Street Intersection (Proposed)

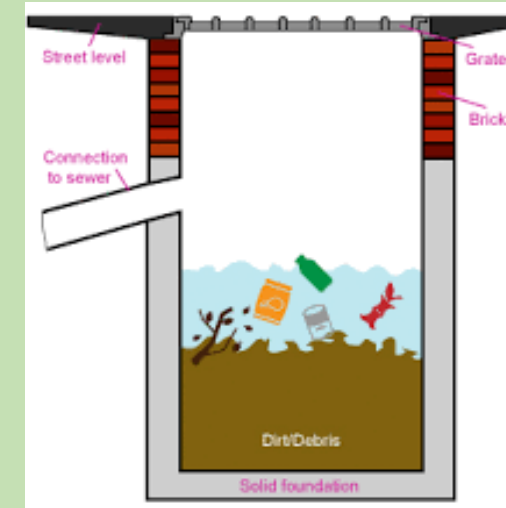


- (1) Conventional-T Intersection (Simpler/Safer Crossing)
- (2) Smaller Radius Intersection
- (3) Narrower Roadway Lanes
- (4) Remove Southbound Right Turn Lane
- (5) Crossing of John Nolen Drive (**Reduced 47-ft**)
- (6) Crossing of Broom Street (**Reduced 32-ft**)
- (7) Pathway to North Shore Drive
- (8) Shared-Use Path Construction in 2023

Stormwater Management - Solutions

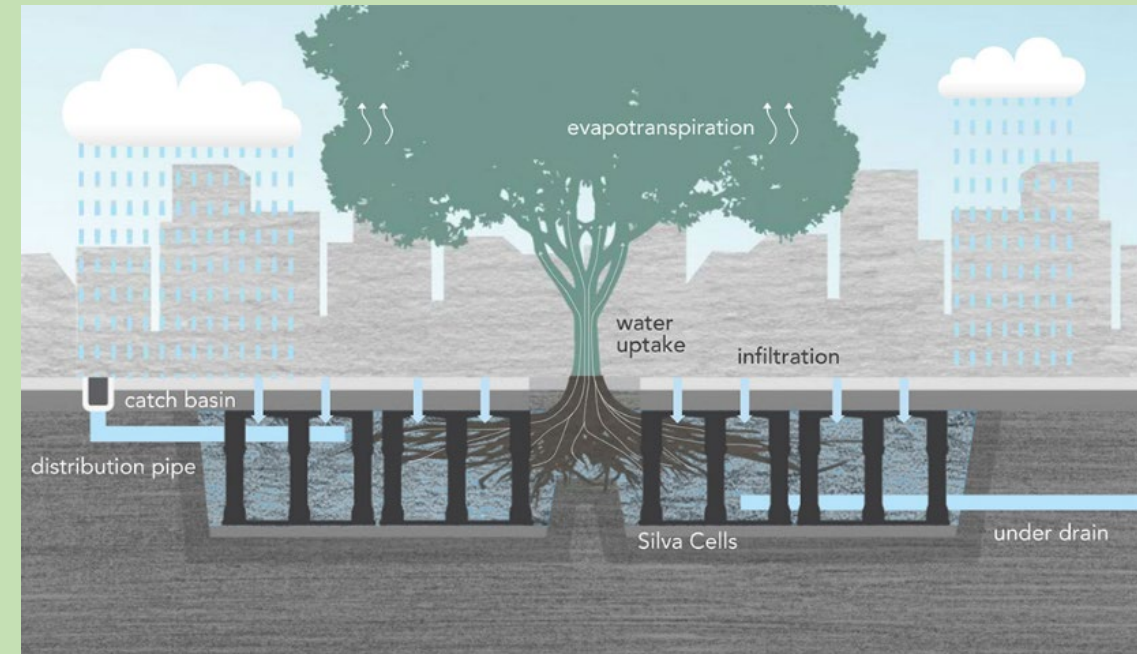
- Catch Basin Inlets

Storm sewer structure with grate opening in the roadway curb and “ sump” to collect sediment/debris before discharging into storm sewer system. Needs to be maintained.



- Tree Cells (Terrace Support System)

Storm sewer to divert surface drainage into tree cells in the terrace (between roadway and pathways) to promote healthy tree growing environment.



Changes Since Last Meeting

- Broom Street Railroad Crossings to Operate as a Single Crossing

Remove gate assemblies and mounted flashing lights between tracks for southeast bound traffic

- Fishing Pier Relocation

Relocate accessible fishing pier from North Shore Drive area to Broom Street area



Changes Since Last Meeting

- **Pathway Delineation**

Installing directional guidance plates between the bicycle path and walking path

- **Tree Plantings**

Tree removals (~100) have been identified and coordinated with neighborhood groups, City Forestry, BPW, BPC, and Common Council

Tree replacements (~125) will include soil amendments for improved growing conditions



Traffic Control & Staging (Overview)

- Vehicles

One (1) Travel Lane in Each Direction

Traffic Crossovers

Turn Lane Restrictions at Intersections

Limited Nightly Closures for Bridge, Storm Sewer,
and Paving Construction

- Pedestrians & Bicycles

Existing – Temporary – Proposed – Detoured

- Boats

Restrictions during Bridge Structure Construction

- Railroad Crossings

Complete Closures for Crossing Construction



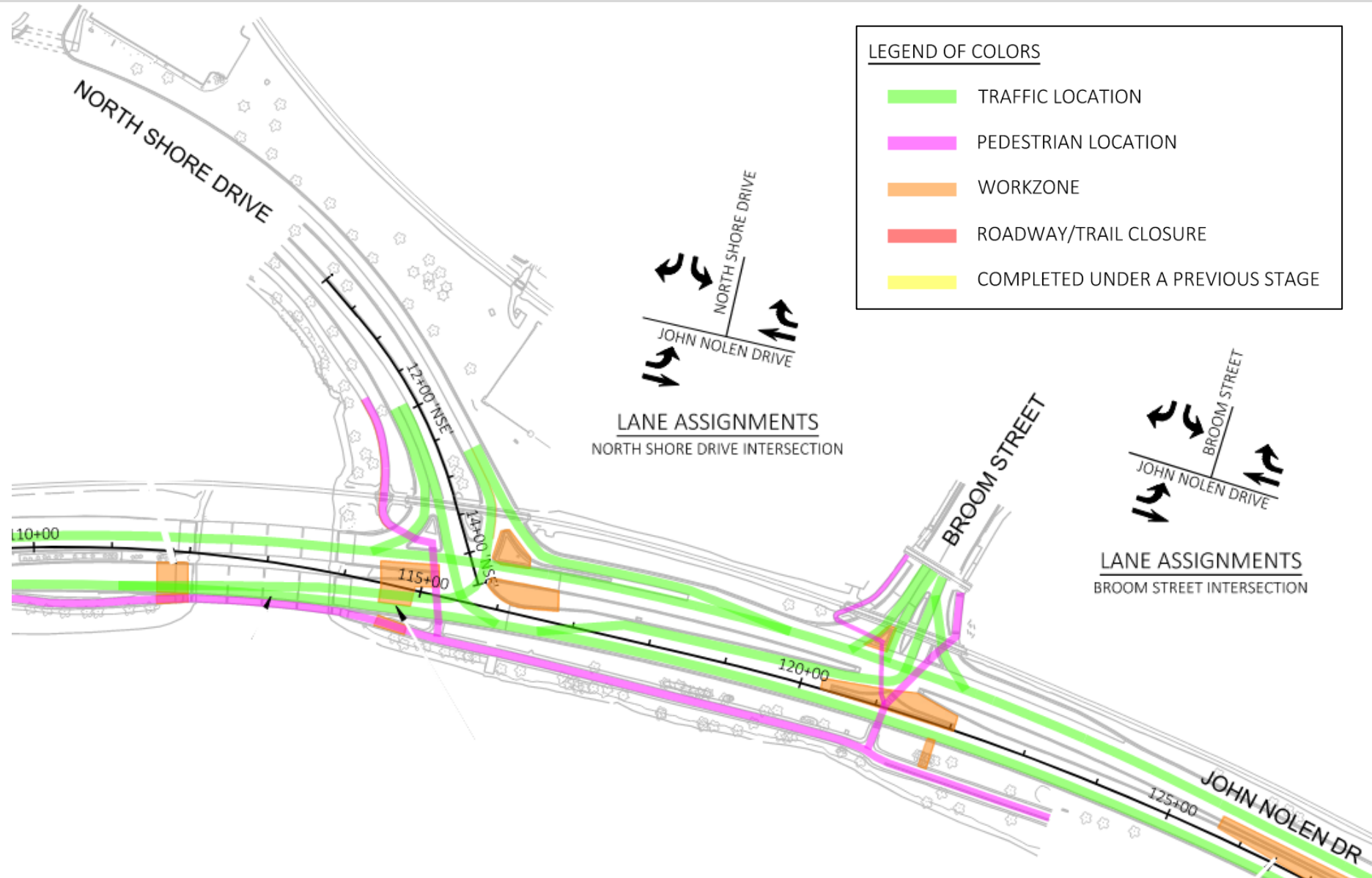
Traffic Control & Staging (Stage 1: October 2025 – November 2025)

Traffic:

One Lane in Each Direction
Intersections Open
Existing Capital City Trail Open

Construction:

Traffic Crossovers
Temporary Pavement
Storm Sewer Connections
Temporary Traffic Signals



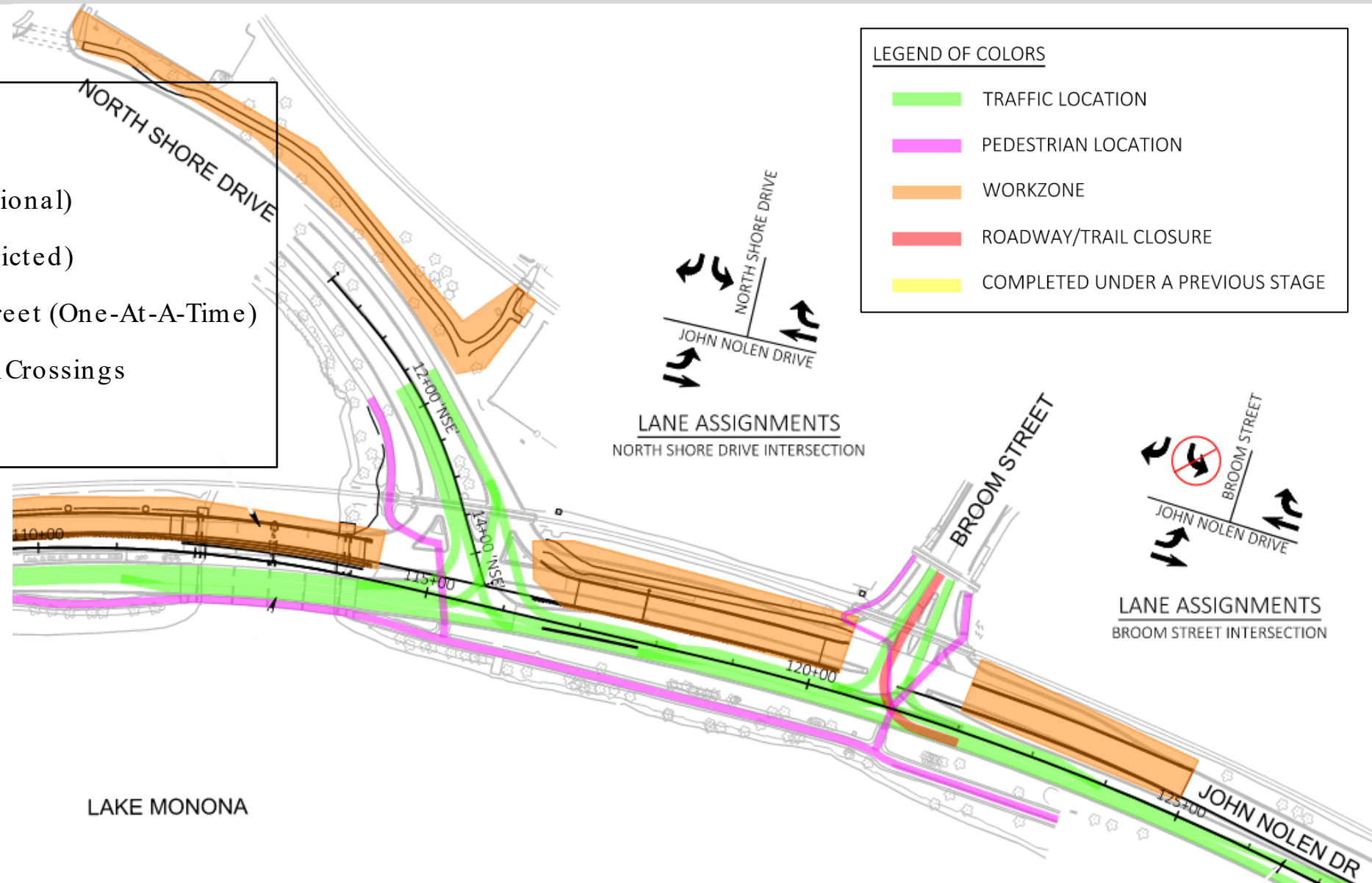
Traffic Control & Staging (Stage 2: November 2025 – August 2026)

Traffic:

- One Lane in Each Direction (Bi-Directional)
- Intersections Open (Turn Lanes Restricted)
- Close North Shore Drive or Broom Street (One-At-A-Time)
- Bicycle/Pedestrian Detour During RR Crossings
- Existing Capital City Trail Open

Construction:

- Southbound Roadway & Bridges
- North Shore Drive Path
- North Shore Drive Intersection
- Broom Street Intersection
- Railroad Crossings



Traffic Control & Staging (Railroad Crossing Detours)

North Shore Drive Closure

(For 10 Days in Summer 2026)



Broom Street Closure

(For 10 Days in Summer 2026)



Legend

Work Zone

Detour Route

Railroad Crossing Construction



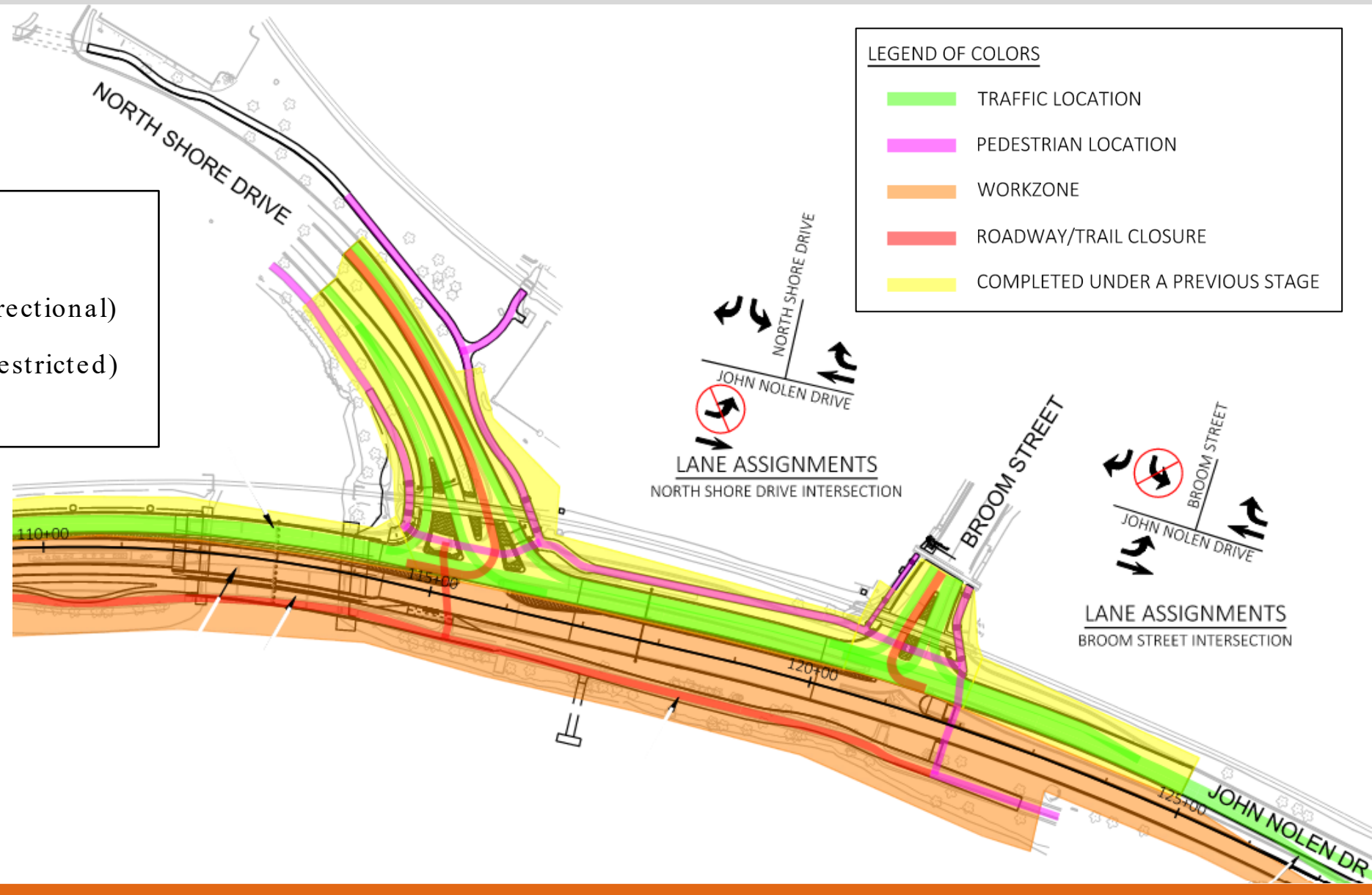
Traffic Control & Staging (Stage 3: August 2026 – June 2027)

Traffic:

One Lane in Each Direction (Bi-Directional)
Intersections Open (Turn Lanes Restricted)
Capital City Trail Detoured

Construction:

Northbound Roadway & Bridges
Capital City Trail
Shoreline Stone Revetment



Traffic Control & Staging (Capital City Trail Detour)



Capital City Trail Closure

(Approximately August 2026 to June 2027)

**NOTE: Potentially Extended due to
Madison Lake Way Project Construction**

**NOTE: (*) Temporary Rectangular Rapid
Flashing Beacon (RRFB) located at North Shore
Drive and Bedford Street Intersection**

Legend

Work Zone

Detour Route

Capital City Trail Construction



Traffic Control & Staging (Stage 4: June 2027 – July 2027)

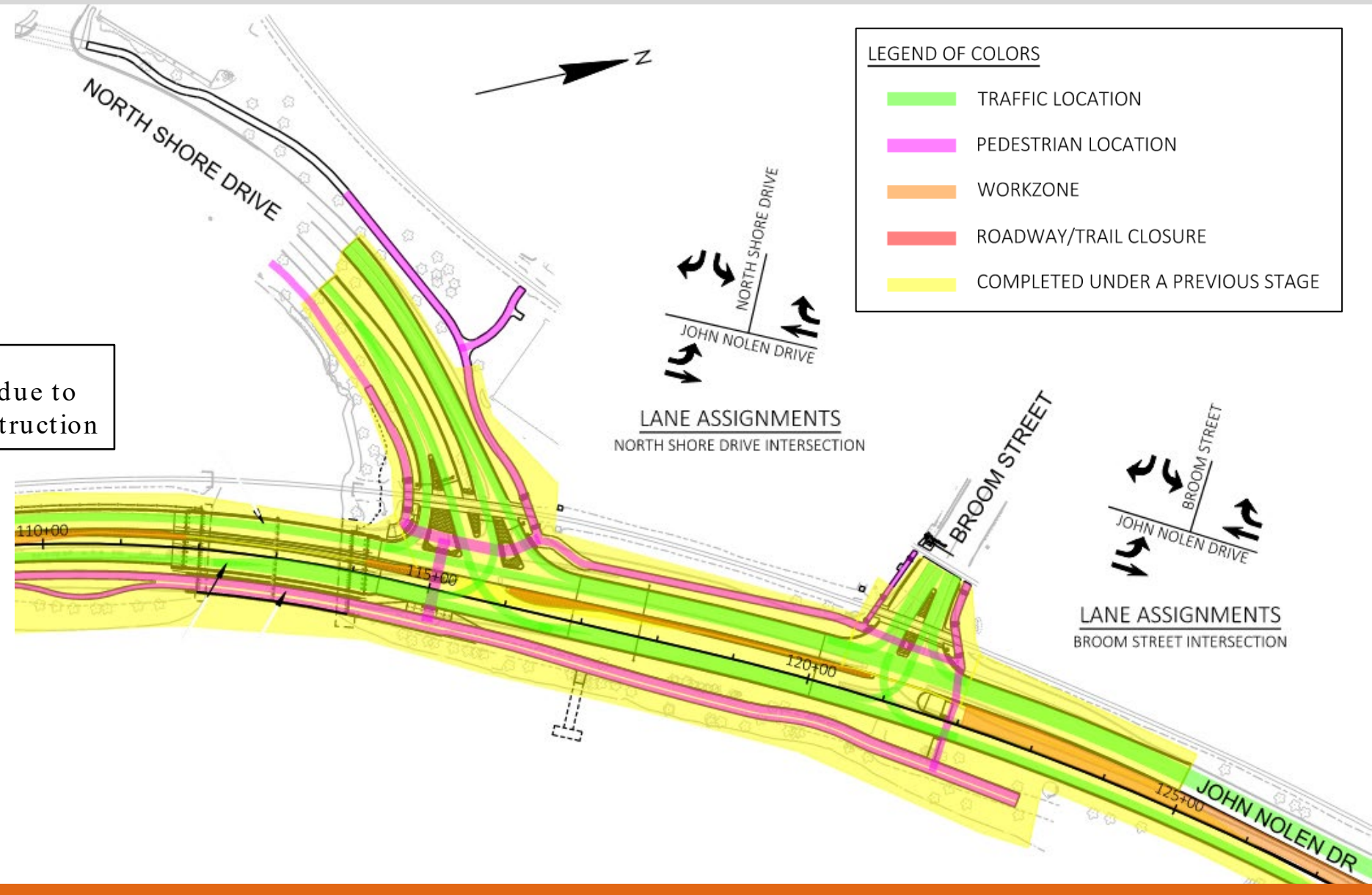
Traffic:

One Lane in Each Direction
Intersections Open
Capital City Trail Open (*)

NOTE (*): Potentially Extended due to
Madison LakeWay Project Construction

Construction:

Median
Final HMA Surface & Finishing

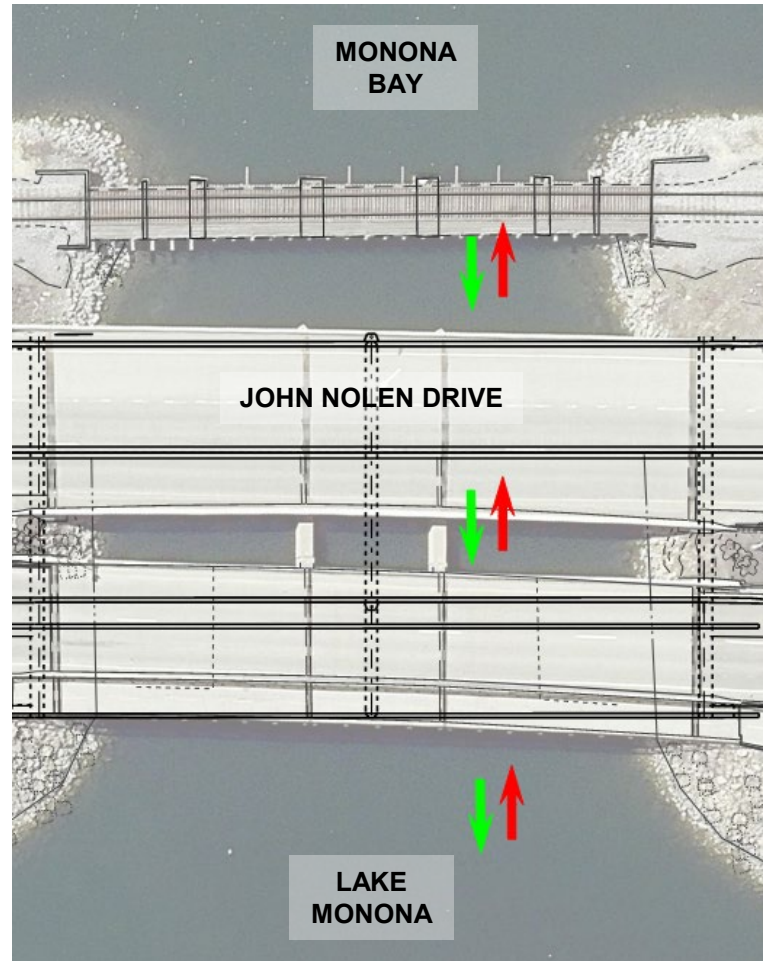


Traffic Control & Staging (Boat Navigation)



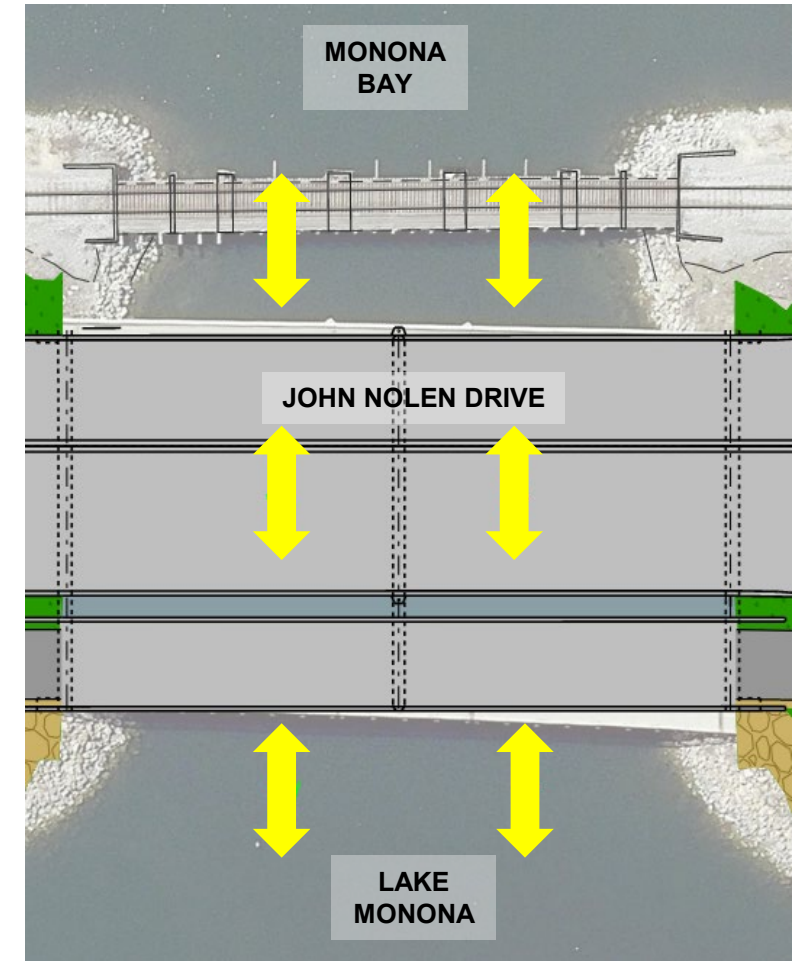
EXISTING

(SHARE MIDDLE SPAN)



DURING CONSTRUCTION

(SHARE EXTERIOR SPAN)



AFTER CONSTRUCTION

(EITHER SPAN)

Coordination During Construction

- Monthly Business & Residents Coordination Meetings
- Notify residents two (2) days prior to restricting access and three (3) days prior to closing access
- Notify public with Portable Changeable Message Signs seven (7) days in advance of all traffic switches and street/path closures
- Project Website with Construction Progress Updates
- Accommodations for Special Events

UW-Madison Graduation

Iron Man Triathlon

UW-Madison Home Football Games

Ride the Drive Event



Travel Tips During Construction

- To reduce congestion and improve the travel experience for everyone using John Nolen Drive, the City encourages drivers to explore options other than driving alone, including:

Biking, Walking, and Rolling

Metro Transit

Carpooling (RoundTrip)

Telework & Flex Schedules

Emergency Ride Home (ERH) Program for

Car-Free Commuters (RoundTrip)



<https://www.cityofmadison.com/engineering/projects/john-nolen-drive/travel-tips>

Project Schedule – John Nolen Drive (Phase 1)

- Public Information Meeting #1 (October 2021)
 - Public Information Meeting #2 (February 2023)
 - Geometry Approved by Common Council (July 2023) (Lakeside Street to North Shore Drive)
 - Geometry Approved by Common Council (November 2023) (North Shore Drive to Broom Street)
 - Value Engineering Study (February 2024)
 - Environmental Document Approved (May 2024)
 - Public Information Meeting #3 (October 2024)
 - Final Plans (May 2025)
 - Utility Relocations (Spring/Summer 2025)
 - Bid Letting (August 2025)
-
- **Pre-Construction Public Meeting (Fall 2025)**
 - **Construction (Fall 2025 – Summer 2027)**

Other Projects - John Nolen Drive (Phase 2)

- Project Limits
 - Olin Avenue to Lakeside Street
- Scope
 - Reconstruction
 - Evaluate Capacity Reduction
 - Evaluate Bike/Ped Connectivity
- Schedule
 - TBD (Construction 2028 or Later)
- Funding
 - Programmed (Local & Federal)



Other Projects - John Nolen Drive (Phase 3)

- Project Limits

JND: Beltline to Olin Avenue

Olin Avenue: Wingra Creek to JND

- Scope

Reconstruction

Evaluate Bike/Ped Connectivity

- Schedule

TBD (Construction 2029 or Later)

- Funding

Programmed (Local & Federal)



Other Projects - North Shore Drive Pathway

- Construction Completed in Summer 2025
- Provides alternative route during JND Construction & Capital City Trail Detour
- Connects to Southwest Path
- Raised crossing at S Bedford St





Madison 
LakeWay™

MADISON
PARKS SASAKI

Madison LakeWay – Phase One Implementation



2024 – Common Council adopted Lake Monona Waterfront Master Plan

2024 – Started of schematic design for the Community Causeway improvements

2025 – Design development and regulatory applications

2026 – Construction documents and public works bidding

2027 – Start of shoreline construction

2028 – Anticipated completion of causeway shore improvements

Questions and Feedback

▶ Meeting Participant Questions

- Please use the “ **Q&A**” option at the bottom of the screen to type a question.
- To ask a question verbally, click the “ **Raise Hand**” option at the bottom of your screen and the host will unmute you.

▶ Construction Contacts

- City Project Manager, Aaron Canton, 608-242-4763, acanton@cityofmadison.com
- WisDOT Project Manager, Mark Sponem, 608-516-1792, mark.sponem@dot.wi.gov
- WisDOT Project Engineer, Dan Bauknecht, 608-516-6303, daniel.bauknecht@dot.wi.gov

▶ Project Website: <https://www.cityofmadison.com/JohnNolenDrive>

- Sign-up for project email updates on the website
- A PDF of the presentation, design information, & construction progress will be posted to the project website

Thank You for Attending!

