

City of Madison Engineering Division

# John Nolen Drive Reconstruction

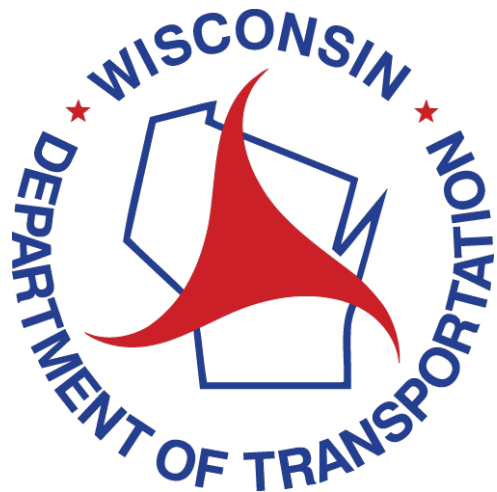
Project I.D. 5992-11-20  
City of Madison, John Nolen Drive  
(Olin Avenue – Broom Street)



Public Information Meeting #5  
June 2, 2026



# Project Team



# Rules and Housekeeping Items

- This meeting will be recorded and posted to the project page.
- All attendees should be muted to keep background noise to a minimum.
- Use the “Q and A” button for technical issues with meeting to troubleshoot with staff to assist.
- Use the “Q and A” button to type questions about presentation. Questions will be answered live after the presentation.
- Inappropriate questions may be dismissed.
- Use the “raise your hand” button to verbally ask your question. You will be prompted to unmute when it is your turn.

# Recording

**This meeting is being recorded.**

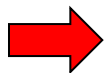
**It is a public record subject to disclosure.**

By continuing to be in the meeting, you are consenting to being recorded and consenting to this record being released to public record requestors.

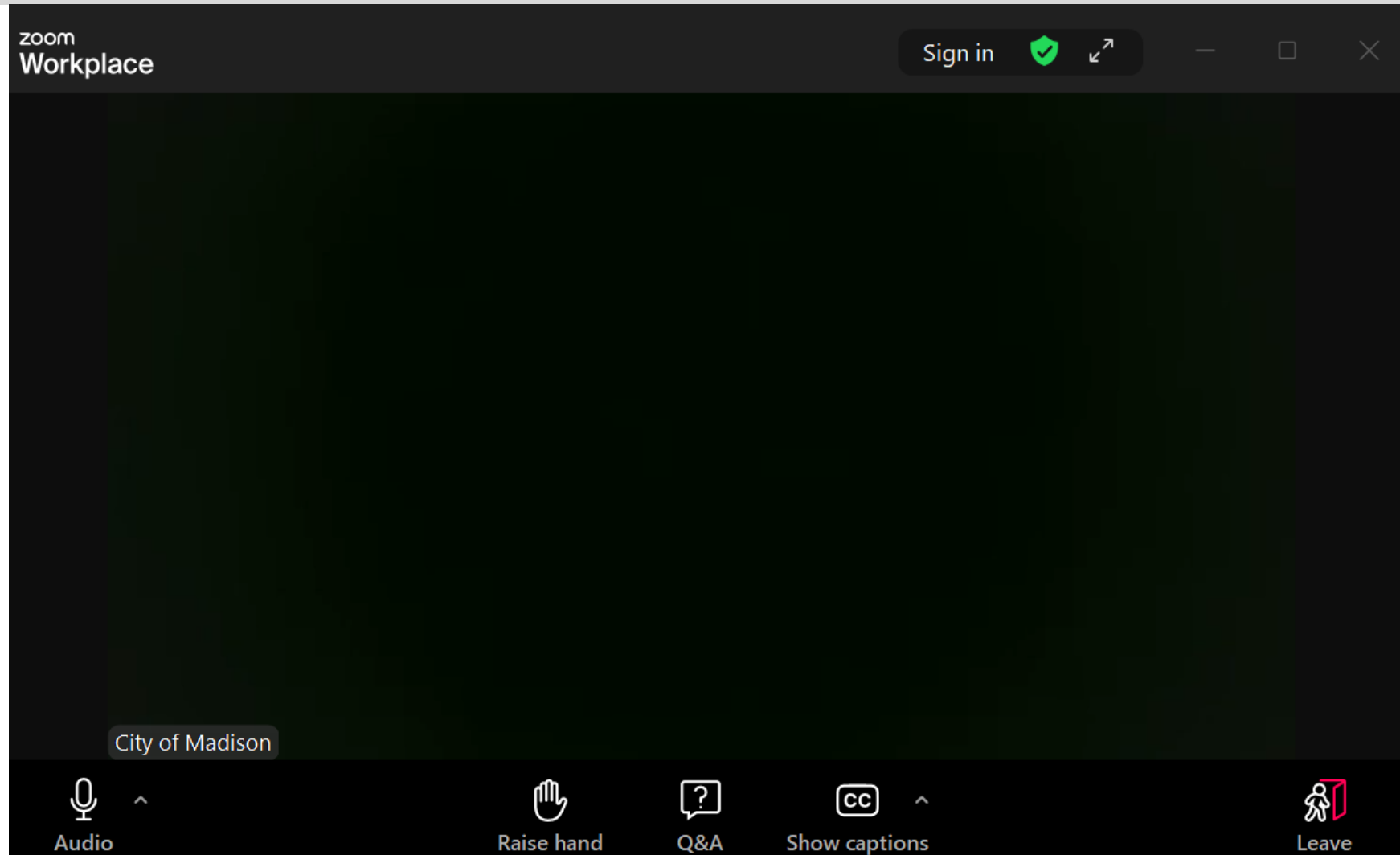
# How to Participate

The screenshot shows the Zoom Workplace interface. At the top left, it says "zoom Workplace". At the top right, there is a "Sign in" button with a green checkmark icon, and window control icons (minimize, maximize, close). In the center, a dialog box titled "Choose one of the audio conference options" is displayed. It has three tabs: "Phone call", "Computer audio" (which is selected), and "Call Me". Under the "Computer audio" tab, there is a blue button labeled "Join with computer audio" with a red arrow pointing to it from the left. Below this button is the text "Test speaker and microphone". At the bottom of the dialog, there is a checkbox labeled "Automatically join audio by computer when joining a webinar". At the bottom of the Zoom window, there is a toolbar with several icons: a microphone icon labeled "Audio", a hand icon labeled "Raise hand", a question mark icon labeled "Q&A", a "CC" icon labeled "Show captions", and a person icon labeled "Leave". The name "City of Madison" is visible above the toolbar.

**Make sure to join audio**



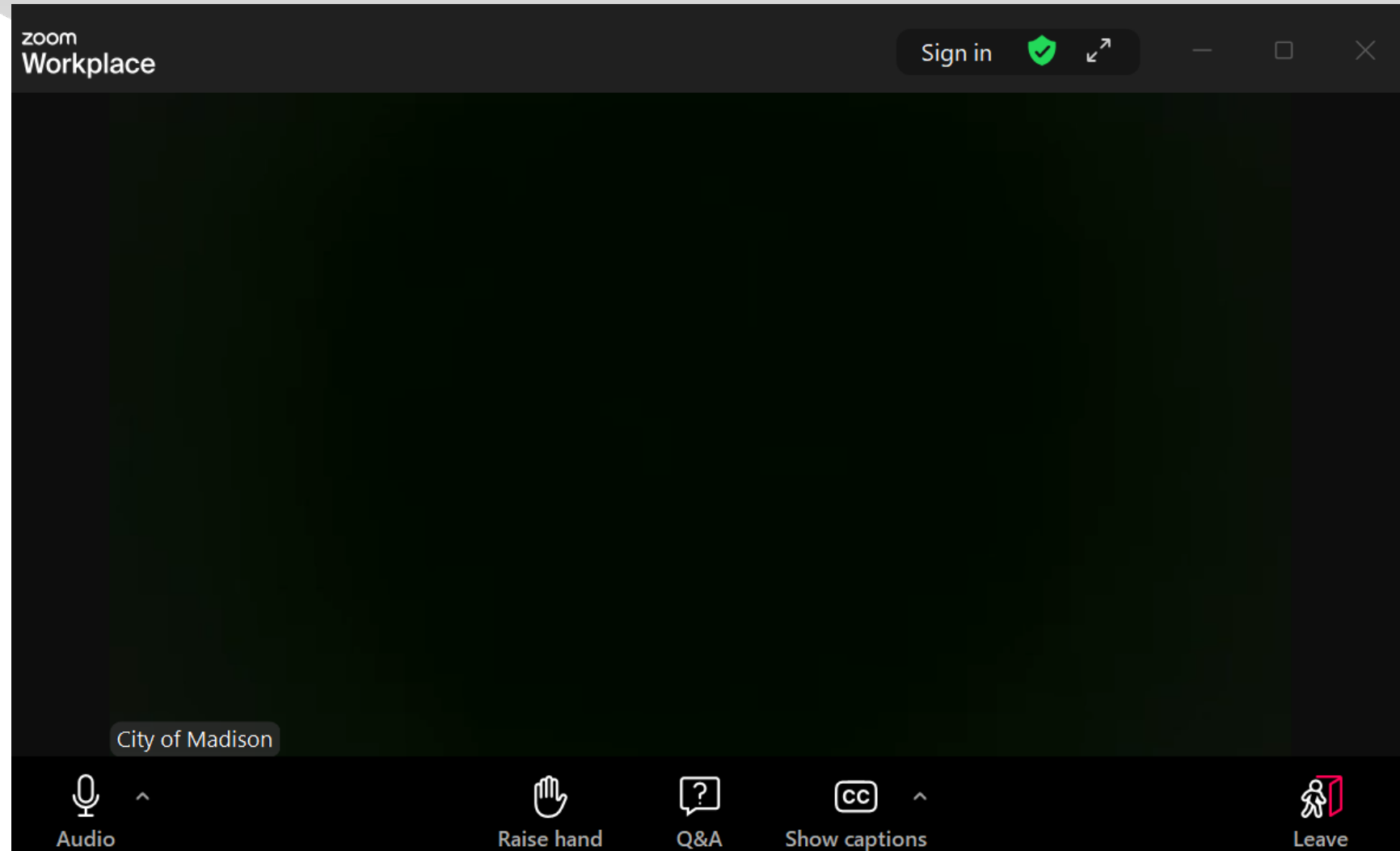
# How to Participate



**Raise your hand** to be unmuted  
For comments or ask additional questions.

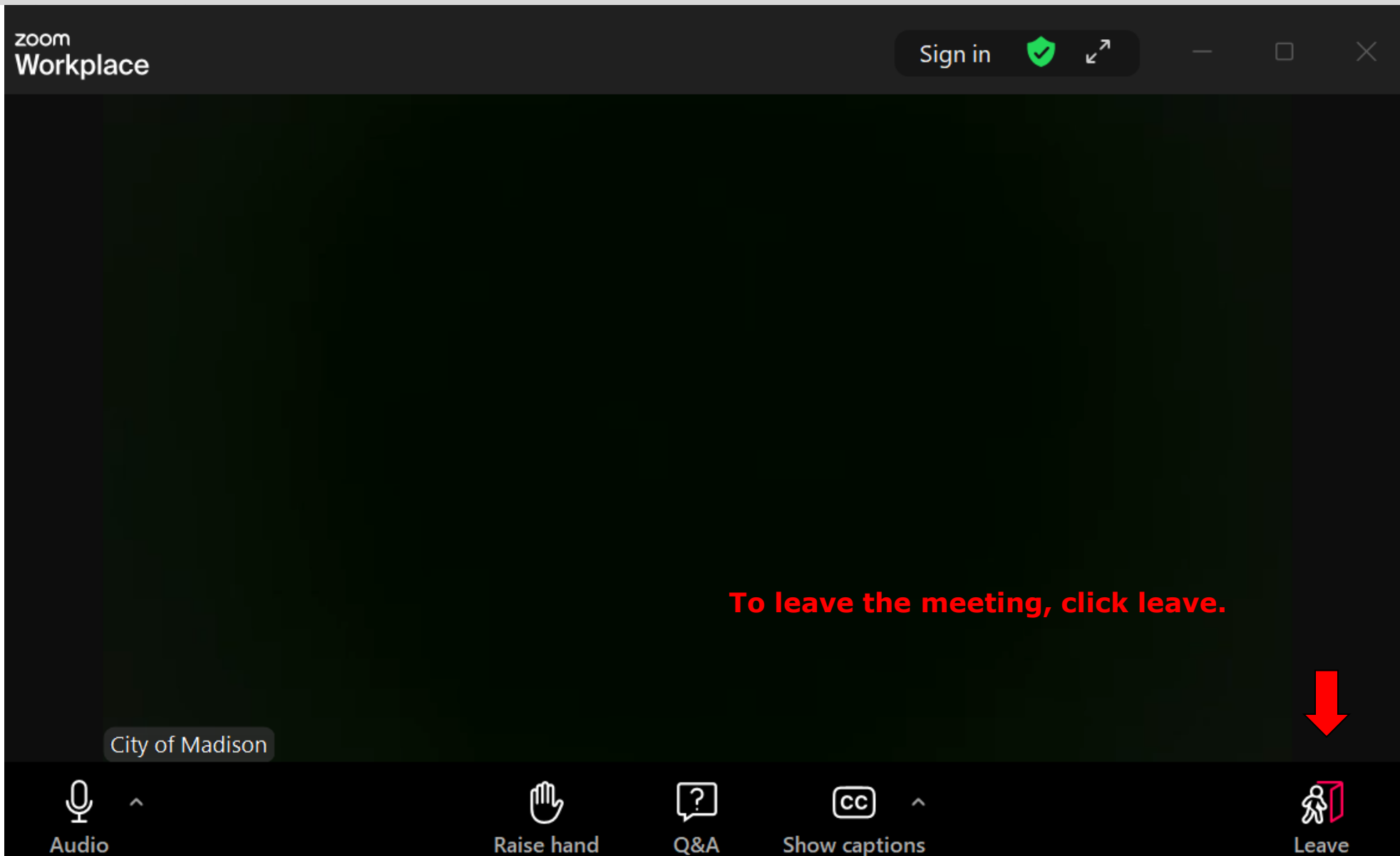


# How to Participate




Use **Q&A button** if you have technical issues or a question for the panelists.

# How to Participate



# How to Participate


zoom  
Workplace


Sign in  ↶ ↷


**If you'd like to enable closed captioning, click "show closed captions" button on the bottom of the screen.**


**This may already be enabled. If this is not enabled, click the button to allow closed captioning.**


City of Madison

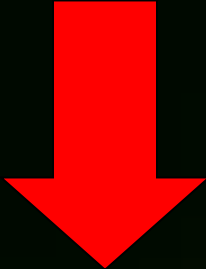
 ^  
Audio

  
Raise hand

  
Q&A

 ^  
Show captions

  
Leave



# Discussion Ground Rules

- Respect your neighbors' time and perspectives.
- Focus your input on the **future roadway design** .
- Ask clarifying questions as we go (e.g., explain a term or repeat a statement).
- Save other questions for the Q&A– they may be answered during the presentation!

# Agenda

- Project Overview & Needs
- Public Engagement Summary – Community Priorities
- Proposed Improvements Overview
  - Roadway – Pathways/Sidewalks – Lighting – Trees – Intersections – Stormwater
- Traffic Control & Staging
- Project Schedule - John Nolen Drive (Phase 2)
- Other Projects
  - John Nolen Drive (Phase 1)
  - John Nolen Drive (Phase 3)
  - Madison Lake Way
- Questions & Feedback



# Project Overview

Phase 1: East Lakeside Street to Broom Street  
\*\*CURRENTLY UNDER CONSTRUCTION\*\*  
Fall 2025 to Summer 2027

Phase 2: East Olin Ave to East Lakeside Street  
Spring 2028 to Fall 2028

Phase 3: Beltline Highway to East Olin Ave  
Spring 2029 to Fall 2029

Madison Lake Way: Olin Park to North Shore Drive  
Summer 2027 to Spring 2028



# John Nolen Drive (Phase 2) Overview

- Gateway “ Iconic” Entrance to Downtown
  - Six (6) Lanes
- Wingra Creek Bridges
  - Connecting Wingra Creek Path to Capital City Trail
- Capital City Trail
  - Along Olin-Turville Court
- Wisconsin & Southern Railroad (WSOR)

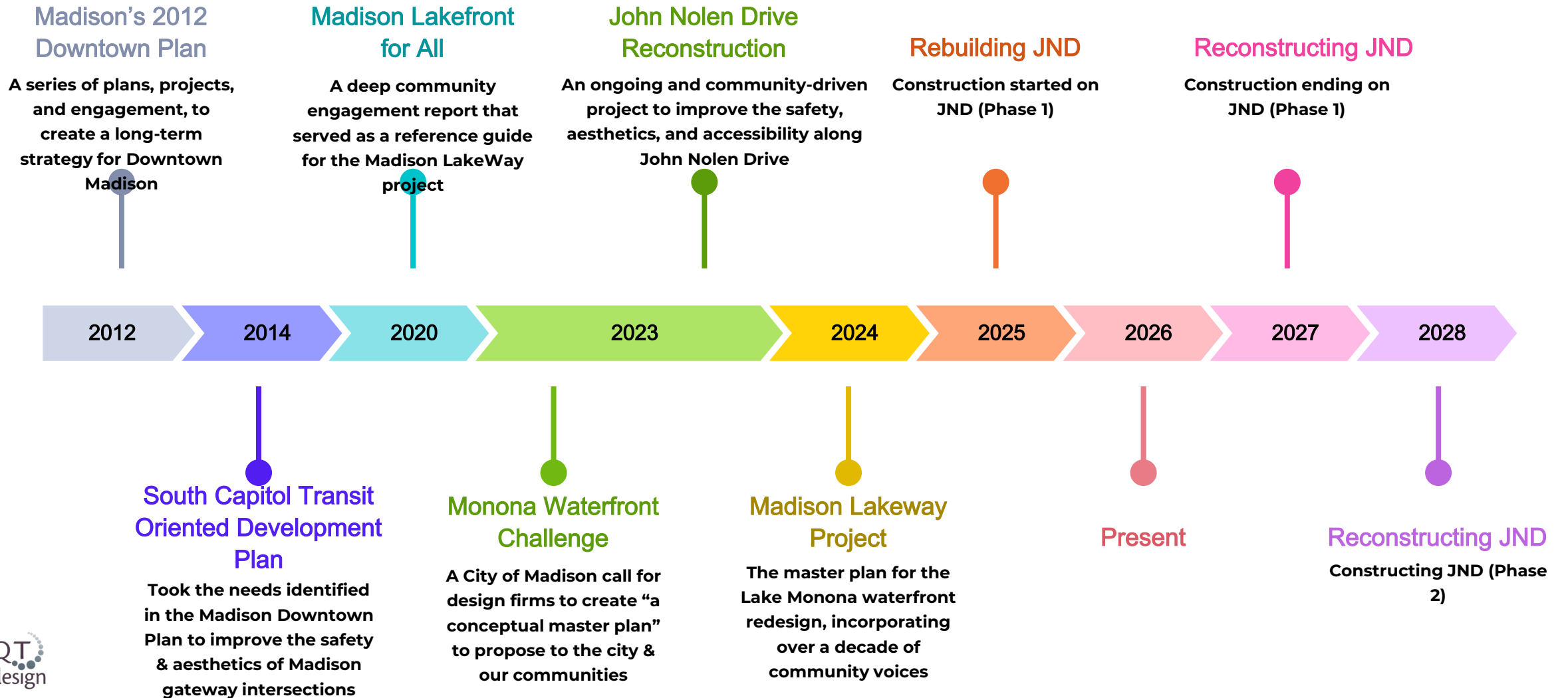


# Project Needs

- Aging Roadway & Bridge Structure Infrastructure
  - Pavement Condition
  - Wingra Creek Bridge Structure Wingwall Repairs
  - Traffic Signal and Street Lighting Outdated
- Inadequate Bicycle & Pedestrian Facilities
  - Limited Pathway & Sidewalk Connectivity along Lakeside Street between adjacent neighborhoods, Olin Park, and the Capital City Trail



# Building the Gateway 10 Years in the Making





# Purpose of Public Engagement

Inform & educate the community



01

Influence design

Engage diverse perspectives



02

Influence priorities

Gather & analyze community's input



03

Achieve a project the community supports



# PUBLIC ENGAGEMENT

2021 - Present

## Project Documents

Share project flyers, the website, and additional information with the public.

## In-Person Engagement

Table at multiple community events to spread the word about John Nolen Drive.

## Community Surveys

Two surveys: a **community priorities survey** and an **evaluation of possible alternatives** to gauge public participation.



## Questions & Comments from Public

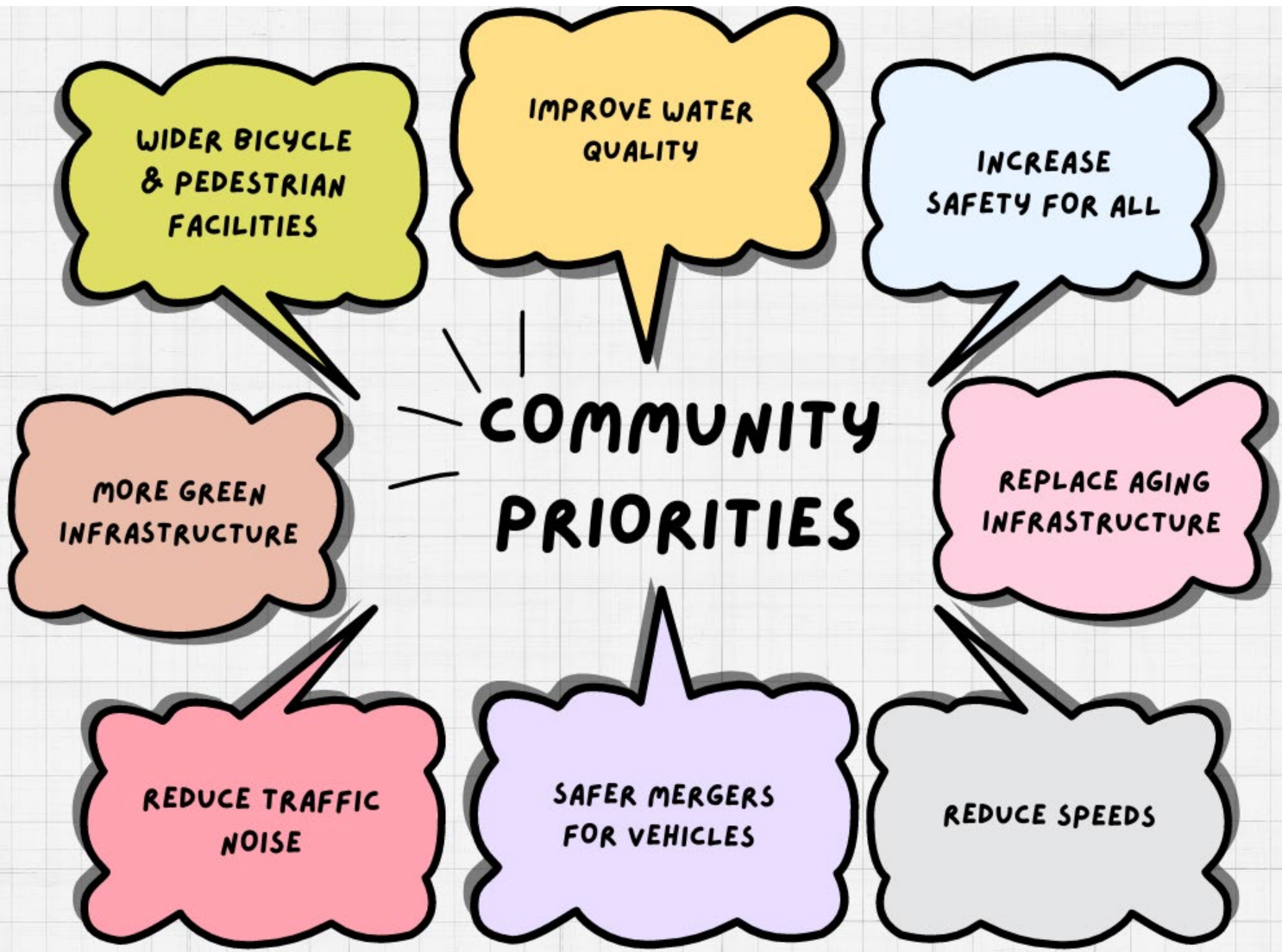
Space was provided for public comments and questions about project progress.

## Small Group Meetings

Additional small-group conversations with community members, groups, and organizations.

## Four Public Meetings

**Four public meetings** have been held to inform the public about the process and to gather feedback and answer questions.



# What we Learned



# The “HOW” ...

## Community Priority



## Proposed Improvements

Bike/Pedestrian  
Mobility

Pathway Connections & Connectivity  
Shorter and Simpler Intersection Crosswalks

Green  
Infrastructure

Reduce Amount of Pavement (Lane Widths, Turn Lanes, and Intersections)  
Limit Existing Tree Removal  
Plant New Trees (by City after Construction)

Sustainable  
Infrastructure

LED Lighting Systems  
Roadway Pavement Reconstruction with Subgrade Improvement

Reduce  
Noise/Speeds

New Roadway and Pathway Pavement Surfaces  
Reduce Travel Lane Widths

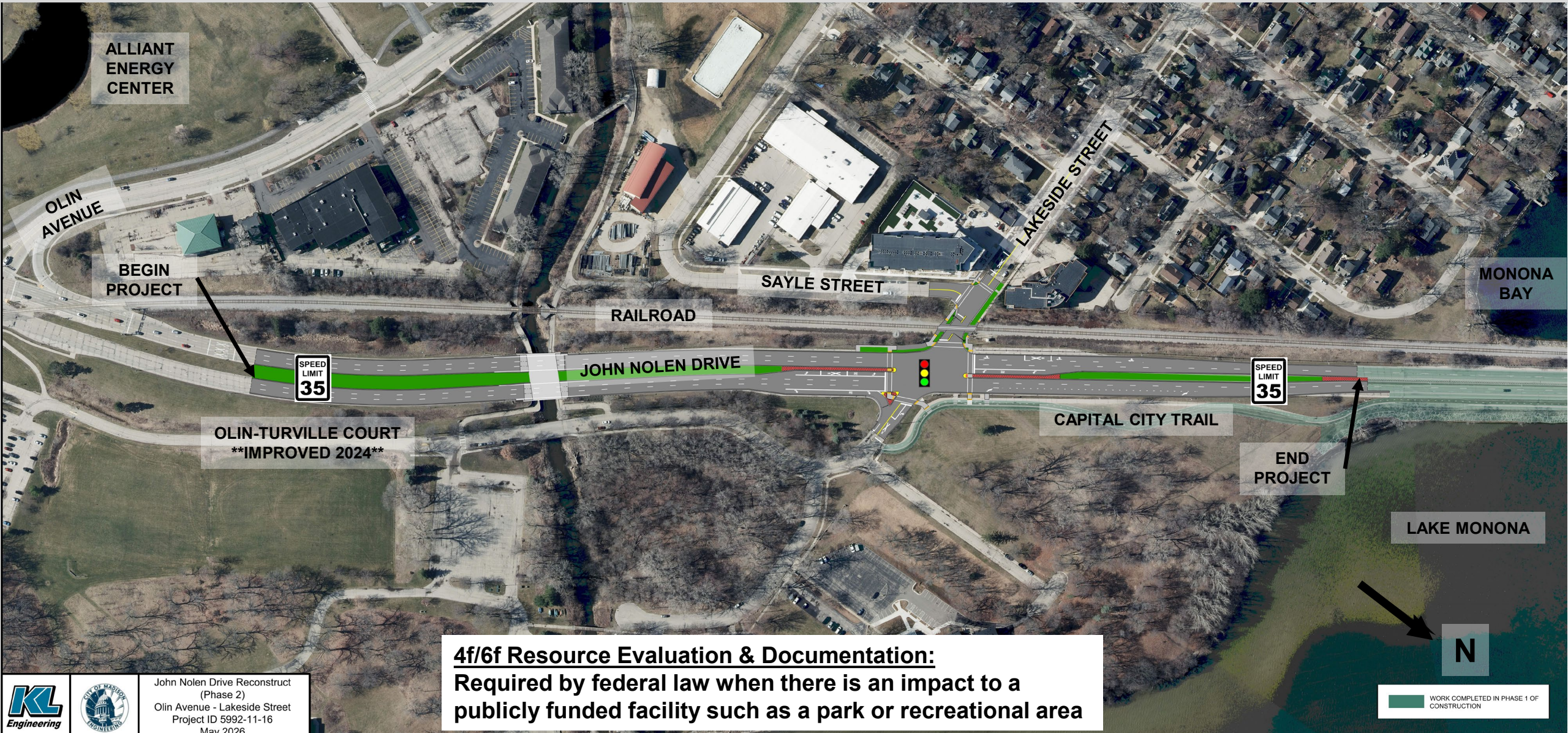
Safety

Reduce Size of Intersections (Reduce Bike & Pedestrian Crossing Times)

Water  
Quality

Sediment Collection Structures within Storm Sewer System

# Proposed Improvement Overview



**4f/6f Resource Evaluation & Documentation:**  
Required by federal law when there is an impact to a publicly funded facility such as a park or recreational area



John Nolen Drive Reconstruct  
(Phase 2)  
Olin Avenue - Lakeside Street  
Project ID 5992-11-16  
May 2026

# Roadway (Existing)



~~ROAD SLOPE~~

11' LANE

11' LANE

12' LANE

12' LANE

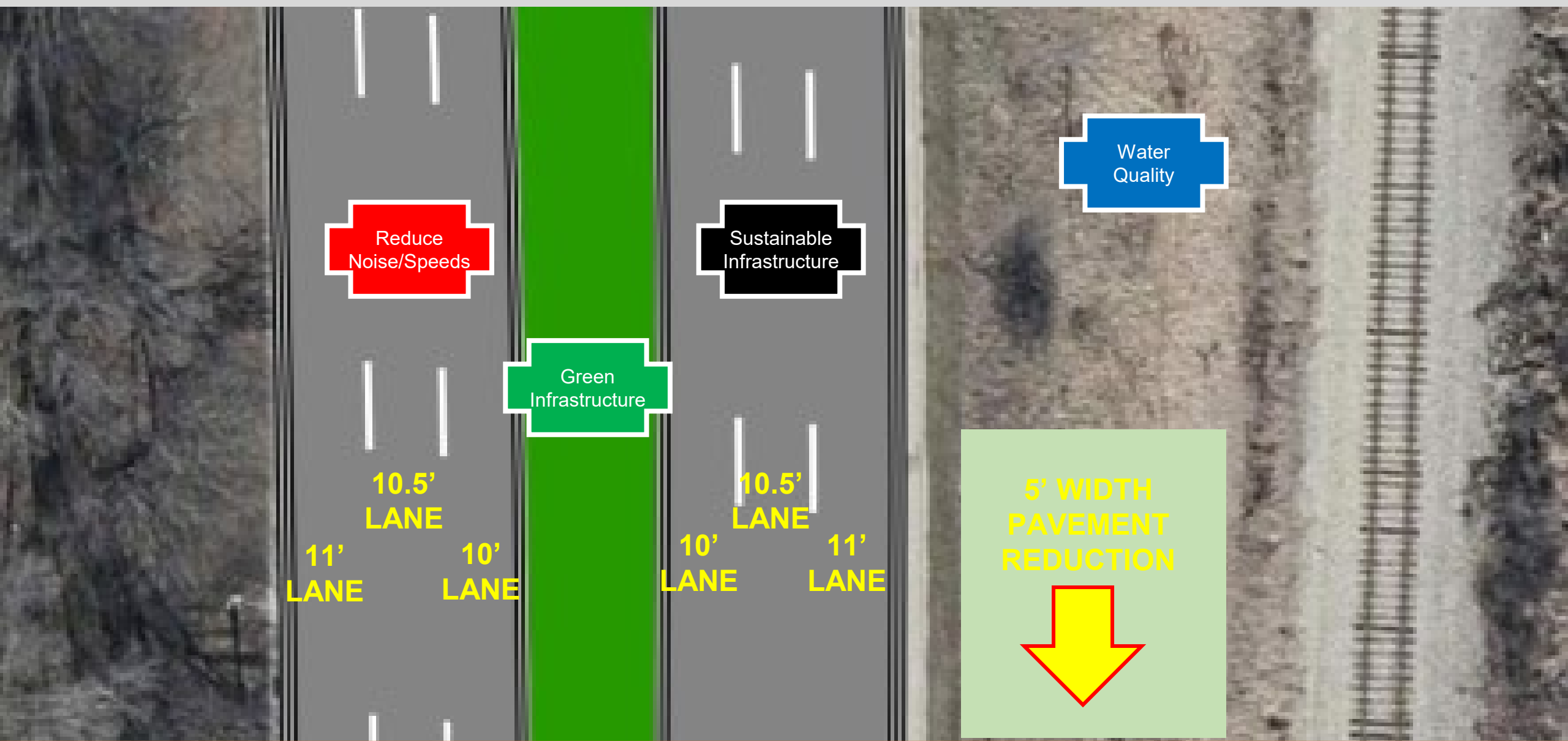
11' LANE

11' LANE

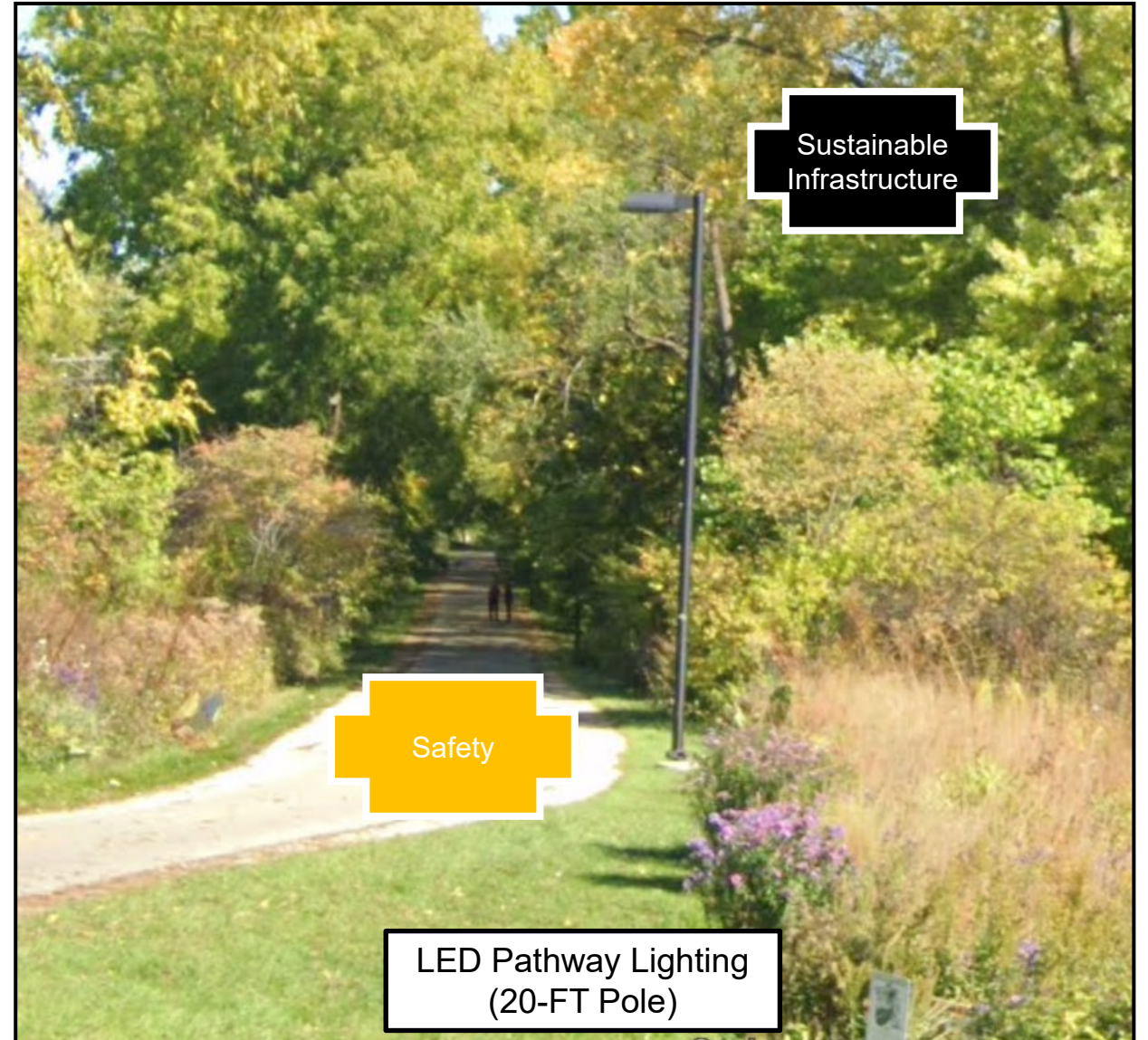
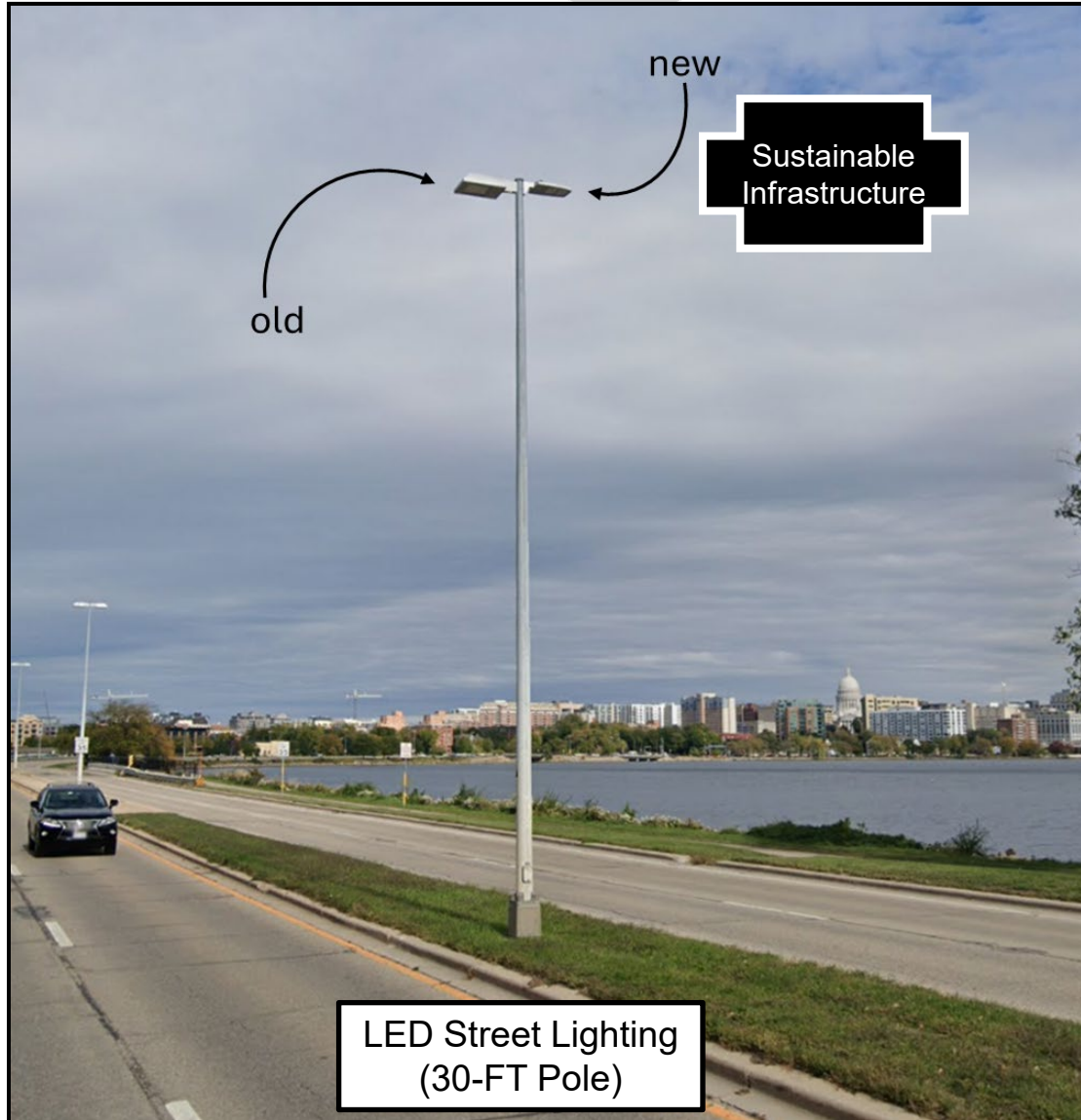
~~FAILING ROAD~~

~~WIDE LANES~~

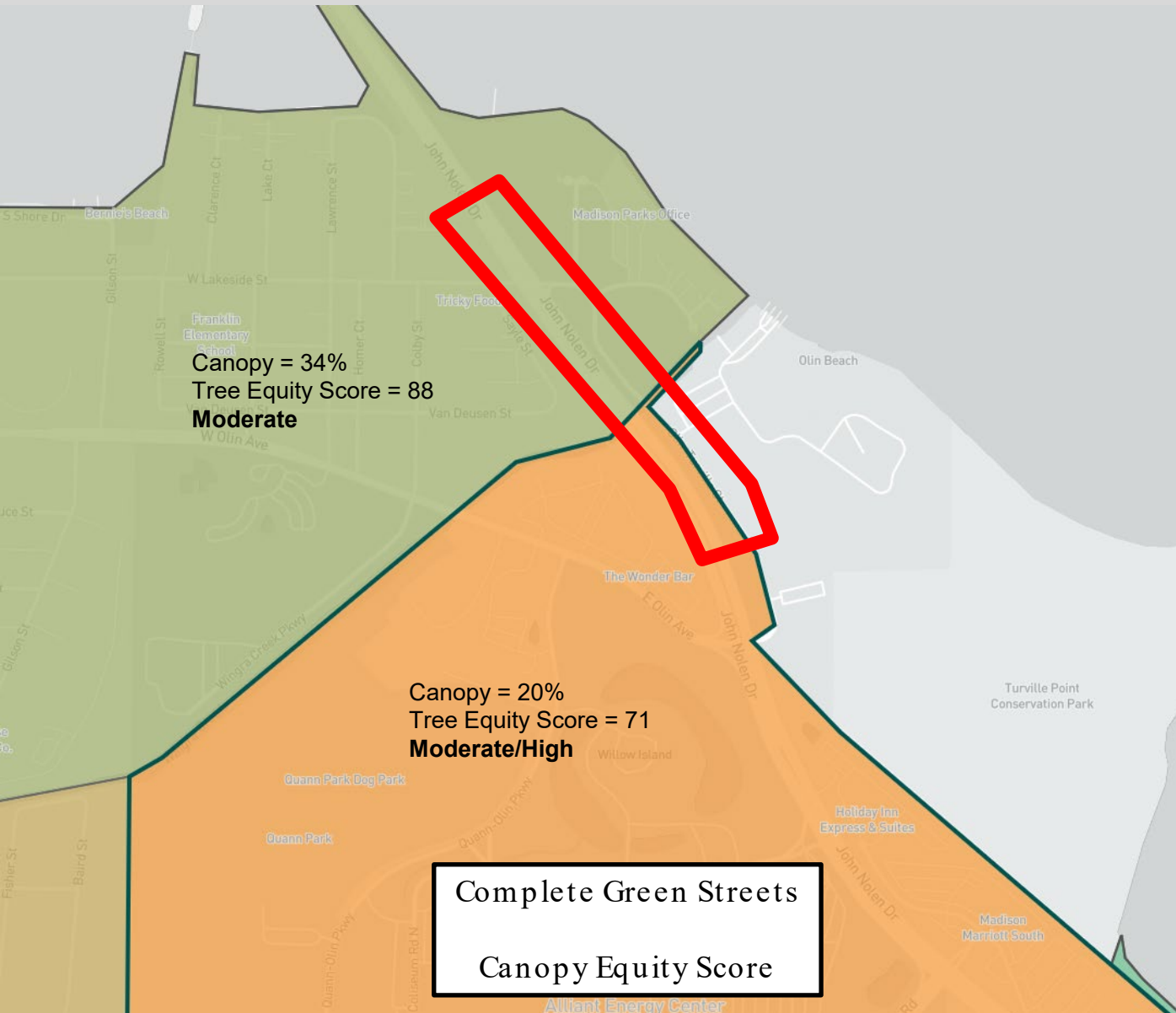
# Roadway (Proposed)



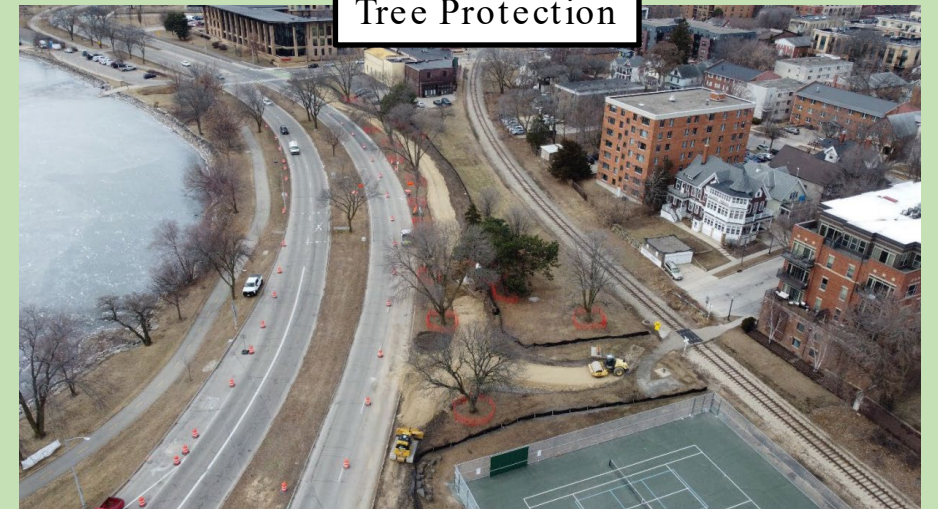
# Lighting (Roadway & Pathway)



# Trees (Removal, Prevention, & Replanting)



Phase 1  
Tree Protection



# Lakeside Street Intersection (Existing)



LAKESIDE STREET

Crossing ID  
391715Y

WSOR

EXTRA LANE

JOHN NOLEN DRIVE

LONG CROSSING

CAPITAL CITY TRAIL

OLIN PARK

NO SIDEWALK

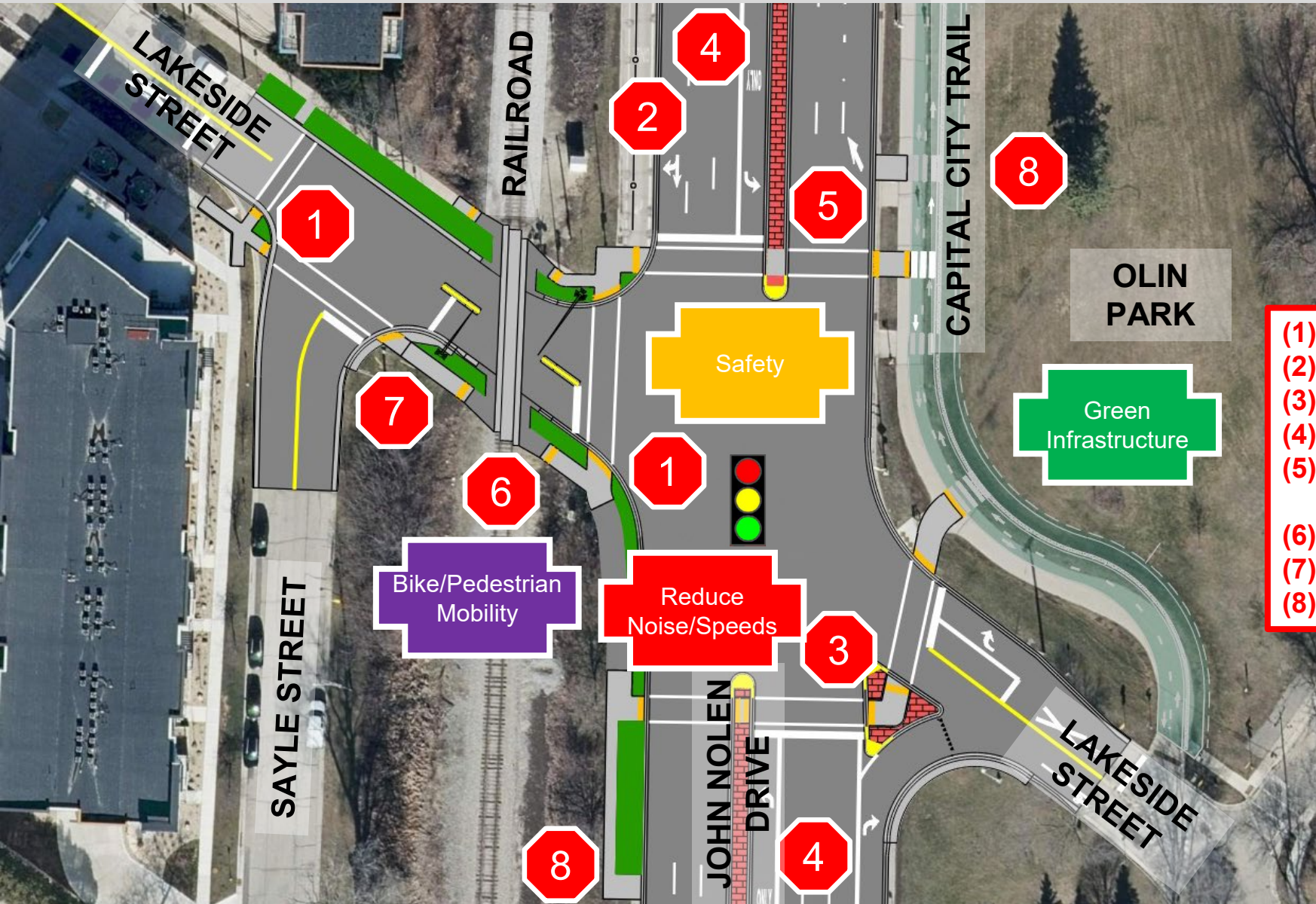
WIDE LANES

FAILING ROAD

SMALL ISLAND

LAKESIDE STREET

# Lakeside Street Intersection (Proposed)



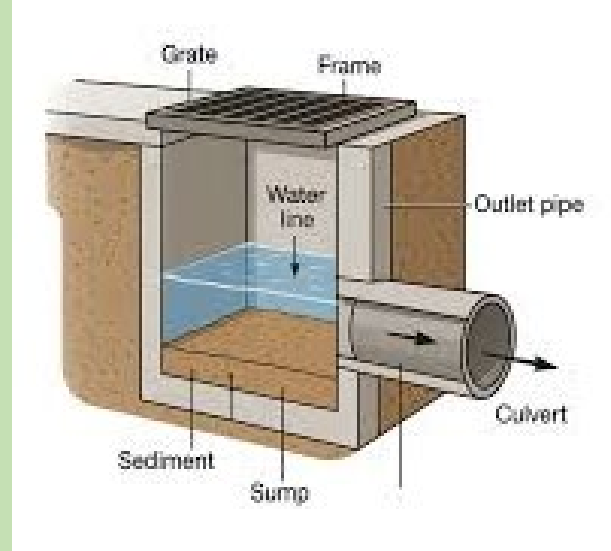
- (1) Smaller Radius Intersection
- (2) Remove Southbound Right Turn Lane
- (3) Increased Island Area
- (4) Narrower Roadway Lanes
- (5) Shorter Crossing of John Nolen Drive (Reduced 30-ft)
- (6) Additional Sidewalk/Pathway Over RR
- (7) Sidewalk/Pathway to Sayle Street
- (8) Bus Stop

# Stormwater Management

- Catch Basin Inlets

Storm sewer structure with grate opening in the roadway curb and “ sump” to collect sediment/debris before discharging into storm sewer system.

Needs to be maintained.



- Swales/Ditches

Open shallow channel to filter pollutants and reduce discharge velocity



# Traffic Control & Staging (Overview)

- Vehicles

  - One (1) Travel Lane in Each Direction

  - Traffic Crossovers

  - Turn Lane Restrictions at Intersections

  - Limited Nightly Closures for Storm Sewer and Paving

- Pedestrians & Bicycles

  - Existing – Temporary – Proposed – Detoured

  - Capital City Trail Remain Open during Construction

- Railroad Crossing

  - Complete Closure for Crossing Construction



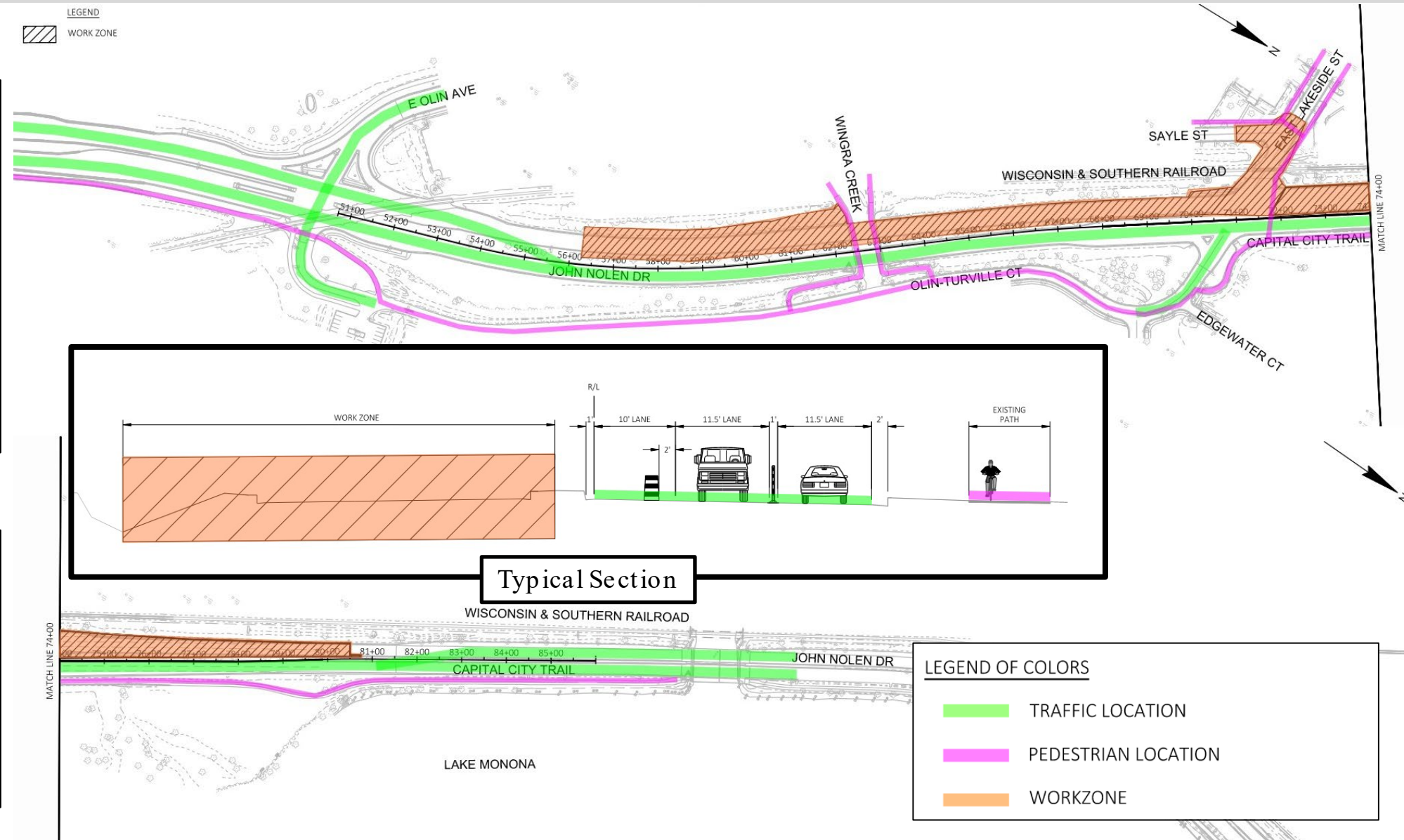
# Traffic Control & Staging (Stage 1 & 2)

**Traffic:**

- One Lane in Each Direction (Bi-Directional)
- Close Lakeside Street (West) Intersection (Limited Duration)
- Existing Capital City Trail Open

**Construction:**

- Southbound Roadway
- Lakeside Street (West) Intersection
- Railroad Crossing



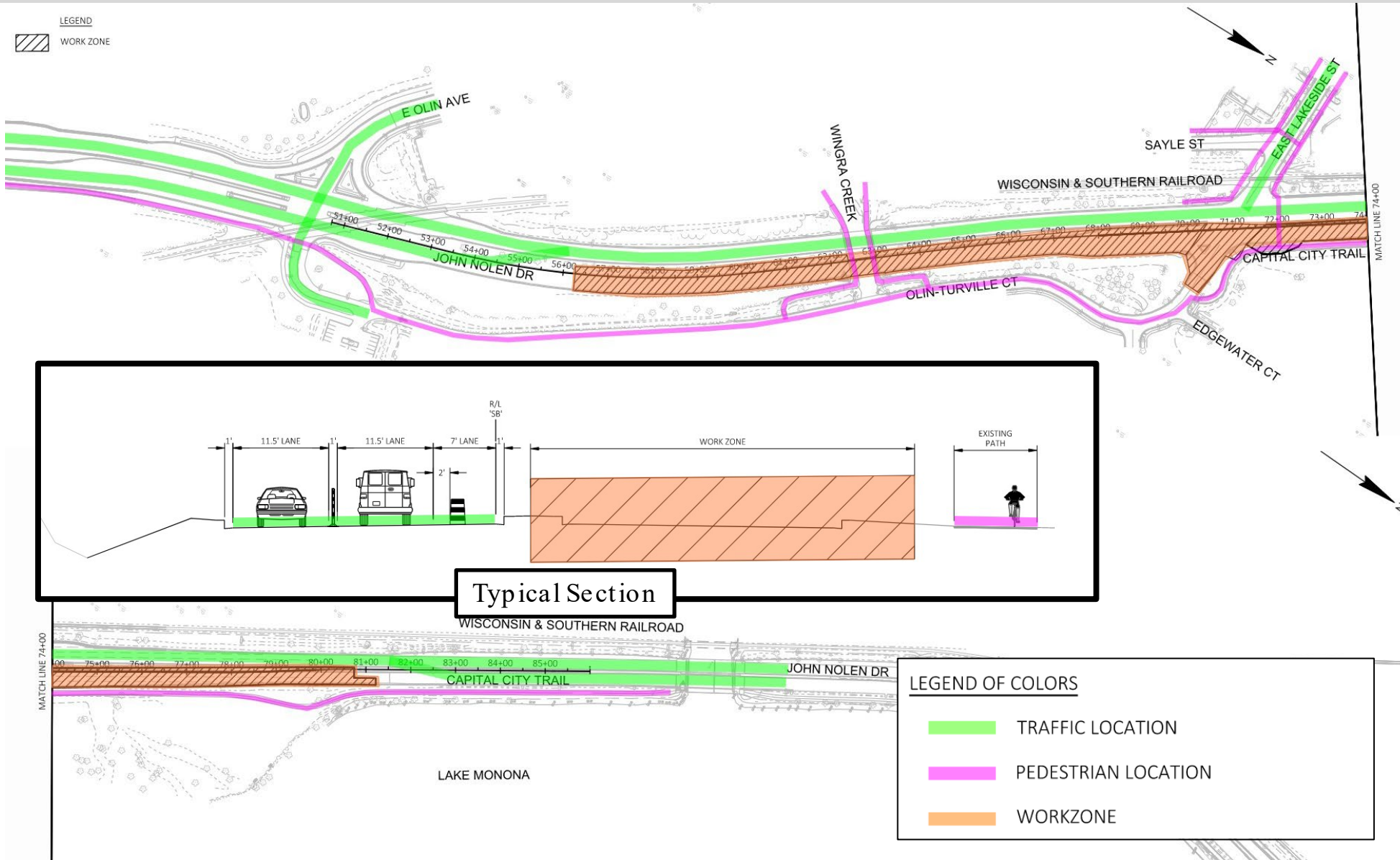
# Traffic Control & Staging (Stage 3 & 4)

**Traffic:**

- One Lane in Each Direction (Bi-Directional)
- Close Lakeside Street (East) Intersection (Limited Duration)
- Existing Capital City Trail Open

**Construction:**

- Northbound Roadway
- Lakeside Street (East) Intersection



# Project Schedule – John Nolen Drive (Phase 2)

- Public Information Meeting #1 (October 2021)
  - Public Information Meeting #2 (February 2023)
  - Public Information Meeting #3 (October 2024)
  - Public Information (Pre-Construction) Meeting #4 (September 2025)
- 
- **Public Information Meeting #5 (June 2026)**
  - **Environmental Document Approved (July 2026)**
  - **Geometry Approved by Common Council (2026/2027)**
  - **Final Plans (August 2027)**
  - **Utility Relocations (Summer/Fall 2027 & Spring 2028)**
  - **Bid Letting (January 2028)**
  - **Construction (2028)**

# Other Projects - John Nolen Drive (Phase 1)



- Project Limits  
Lakeside Street to Broom Street
- Construction Schedule  
Fall 2025 to Summer 2027
- Follow the Progress (Weekly Updates)

<https://www.cityofmadison.com/JohnNolenDrive>

# Other Projects - John Nolen Drive (Phase 3)

- Project Limits

JND: Beltline to Olin Avenue

Olin Avenue: JND to Wingra Creek

- Scope of Improvement

Reconstruction

Evaluate Bike/Ped Connectivity

- Construction Schedule

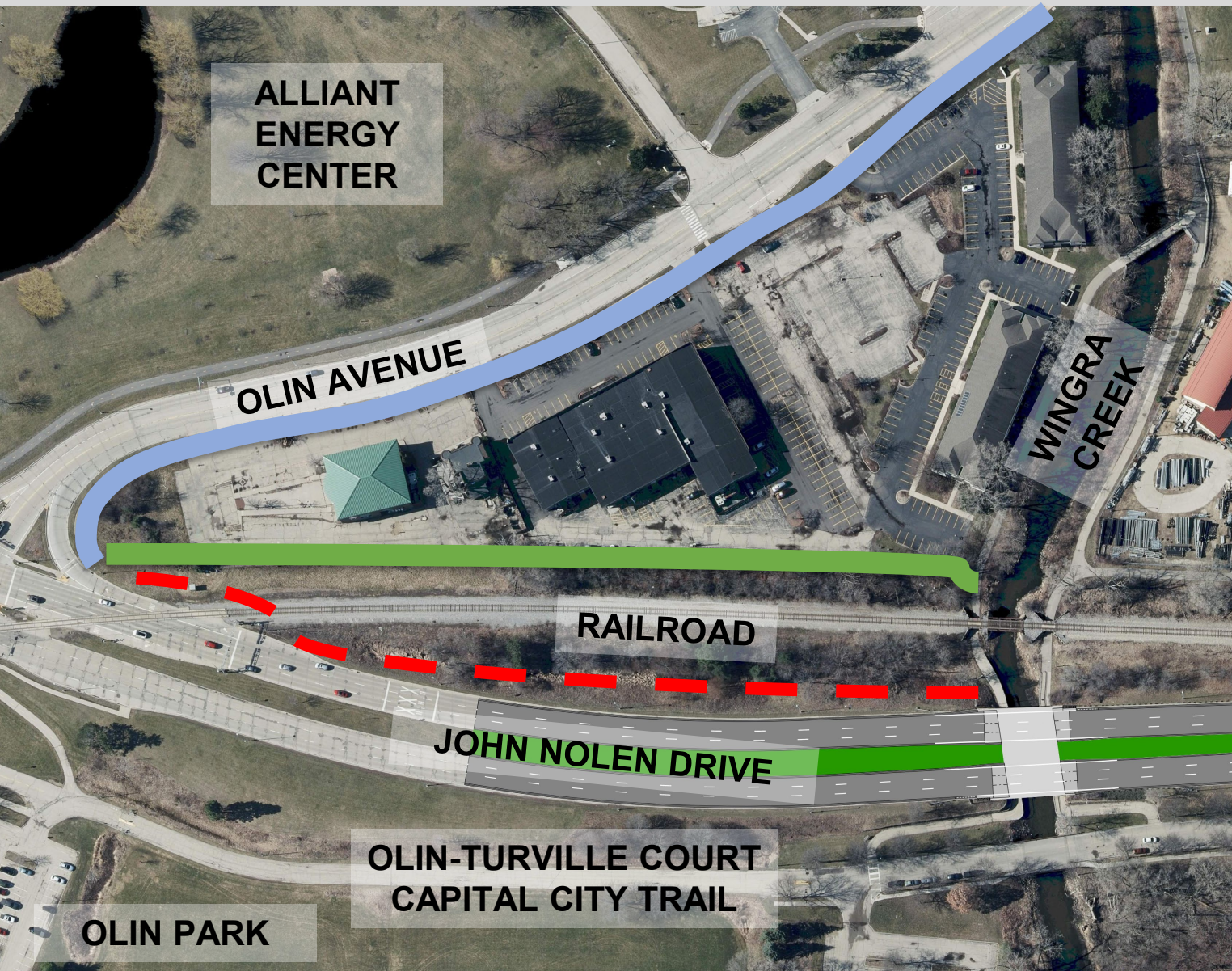
TBD (Construction 2029 or Later)

- Funding

Programmed (Local & Federal)



# John Nolen Drive (Phase 3) Pathway Alternatives



- Eastside Olin Avenue Alternative  
To Be Evaluated during Phase 3
- Westside Railroad Alternative  
To Be Evaluated with Private Development
- Westside John Nolen Drive Alternative  
Currently Dismissed due to Anticipated Construction Costs and Potential Impacts (Railroad, Environmental, etc.)



Madison   
**LakeWay**<sup>TM</sup>

**MADISON  
PARKS SASAKI**

# Madison LakeWay – Phase One Implementation



2024 – Common Council adopted Lake Monona Waterfront Master Plan

2024 – Started of schematic design for the Community Causeway improvements

2025 – Design development and regulatory applications

2026 – Construction documents and public works bidding

2027 – Start of shoreline construction

2028 – Anticipated completion of causeway shore improvements

# Questions and Feedback

## ▶ Meeting Participant Questions

- Please use the ["Q&A"](#) option at the bottom of the screen to type a question.
- To ask a question verbally, click the ["raise hand"](#) option at the bottom of your screen and the host will unmute you.

## ▶ Engineering

- City Project Manager, Chris Petykowski, 608-267-8678, [cpetykowski@cityofmadison.com](mailto:cpetykowski@cityofmadison.com)
- Public Information Officer, Hannah Mohelnitzky, 608-669-3560, [hmoelnitzky@cityofmadison.com](mailto:hmoelnitzky@cityofmadison.com)
- Project Email Contact, [JNDproject@cityofmadison.com](mailto:JNDproject@cityofmadison.com)

## ▶ Project Website: <https://www.cityofmadison.com/JohnNolenDrive>

- Sign-up for project email updates on the website
- A PDF of the presentation, design information, & construction progress will be posted to the project website

# Thank You for Attending!

