



Welcome to the

Vilas Avenue and Campbell Street Reconstruction

Public Involvement Meeting

December 13, 2018

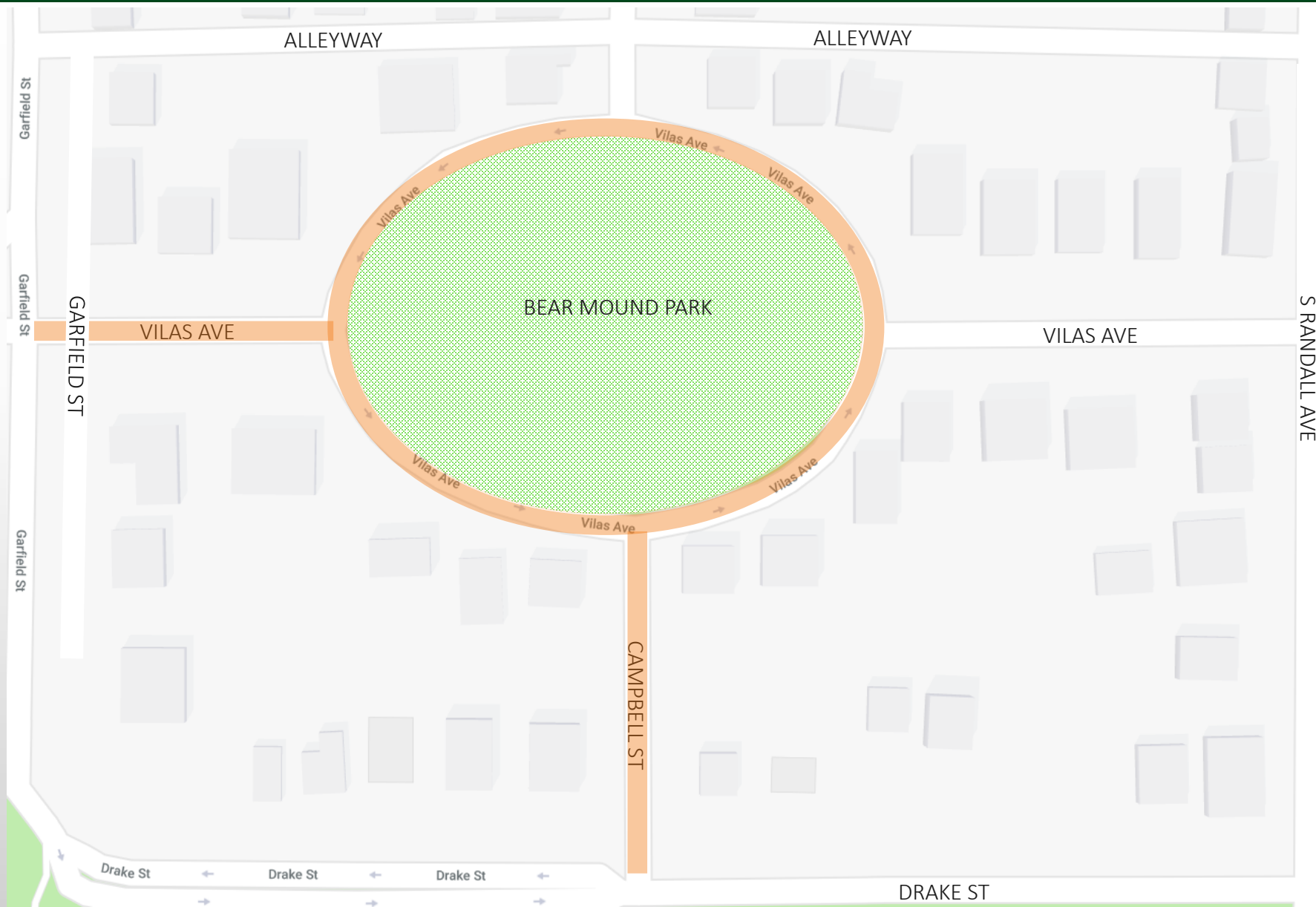


PROJECT CONTACTS

Title	Name	Phone	Email
Project Manager	Reid Stiteley	608-266-4093	rstiteley@cityofmadison.com
Historical Coordination	Phil Gaebler	608-266-4059	pgaebler@cityofmadison.com
Traffic	Jeremy Nash	608-266-6585	jnash@cityofmadison.com
Storm & Sanitary Sewer	Daniel Olivares	608-261-9285	daolivares@cityofmadison.com
Water	Amanda Schockling	608-261-9243	aschockling@cityofmadison.com



PROJECT LOCATION





1. City Utility Reconstruction

- Sanitary
- Water
- Storm

2. Street Reconstruction

- Existing Street Details
- Proposed Street Details

3. Additional Coordination

- Madison Gas and Electric
- City Forestry
- Archeology and History



PROJECT SCHEDULE

Anticipated Timeline	
Mail Estimated Assessments & Public Hearing Notice	By April 5, 2019
Board of Public Works Public Hearing	April 17, 2019
Common Council Hearing	April 30, 2019
Advertise for Bids	May 9, 2019
Begin Construction 7a-7p M-Sa, 10a-7p Su	July 15, 2019
End Construction	October 15, 2019



1. CITY UTILITY RECONSTRUCTION - SANITARY

SANITARY				
Street	Existing Pipe	Installation Year	Replace Main?	Replace Laterals?
Vilas Ave (Garfield St to BMP)	8-Inch PVC	2004	Structure Only	Yes, Old Only
Campbell St (Vilas Ave to Drake St)	6-Inch Clay	1923	Yes	Yes

- Laterals replaced to property line



1. CITY UTILITY RECONSTRUCTION – WATER & STORM

WATER					
Street	Existing Pipe	Installation Year	Rating	Replace Main?	Replace Laterals?
Vilas Ave (Garfield St Around to East Side of Circle)	4-Inch Cast Iron	1904	20%	Yes	Yes
Campbell St (Vilas Ave to Drake St)	4-Inch Cast Iron	1924	30%	Yes	Yes

- Installations from recent projects in 2003 and 2004 to remain
- Services disconnected from existing main & reconnected to new



1. CITY UTILITY RECONSTRUCTION – WATER & STORM

Storm				
Street	Existing Pipe	Installation Year	Replace Pipe?	Replace Inlets?
Vilas Ave (North Side BMP)	12-Inch Clay	1920	Yes	Yes, 1 Removed
Campbell St (Vilas Ave to Drake St)	12-Inch Clay	1920 & 1959	Yes	Yes, 1 Added



2. STREET RECONSTRUCTION – EXISTING STREET DETAILS

Existing Street	Pavement Type	Initial Construction Year [Resurfaced]	Pavement Rating	Curb & Gutter Rating	Travel Lanes	Parking	Speed Limit
Vilas Ave	Asphalt	1955 [1981]	4/10	4/10	Two-Way	Both Sides	25 MPH
Campbell St	Asphalt	1931 [1975]	4/10	4/10	Two-Way	Both Sides	25 MPH

- One way traffic around Bear Mound Park
- Right side parking around Bear Mound Park



2. STREET RECONSTRUCTION – EXISTING STREETS

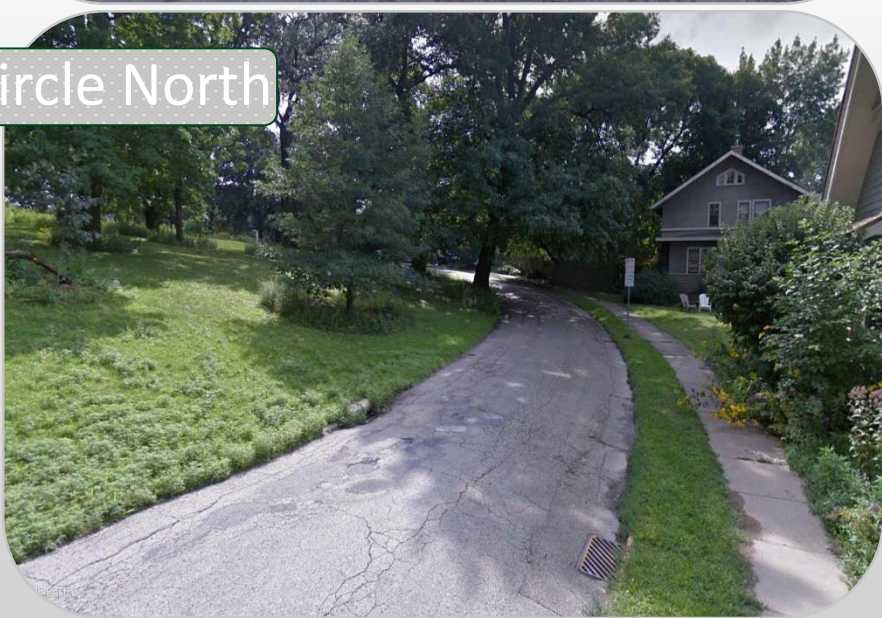
Vilas Ave



Campbell St



Vilas Circle North



Vilas Circle South



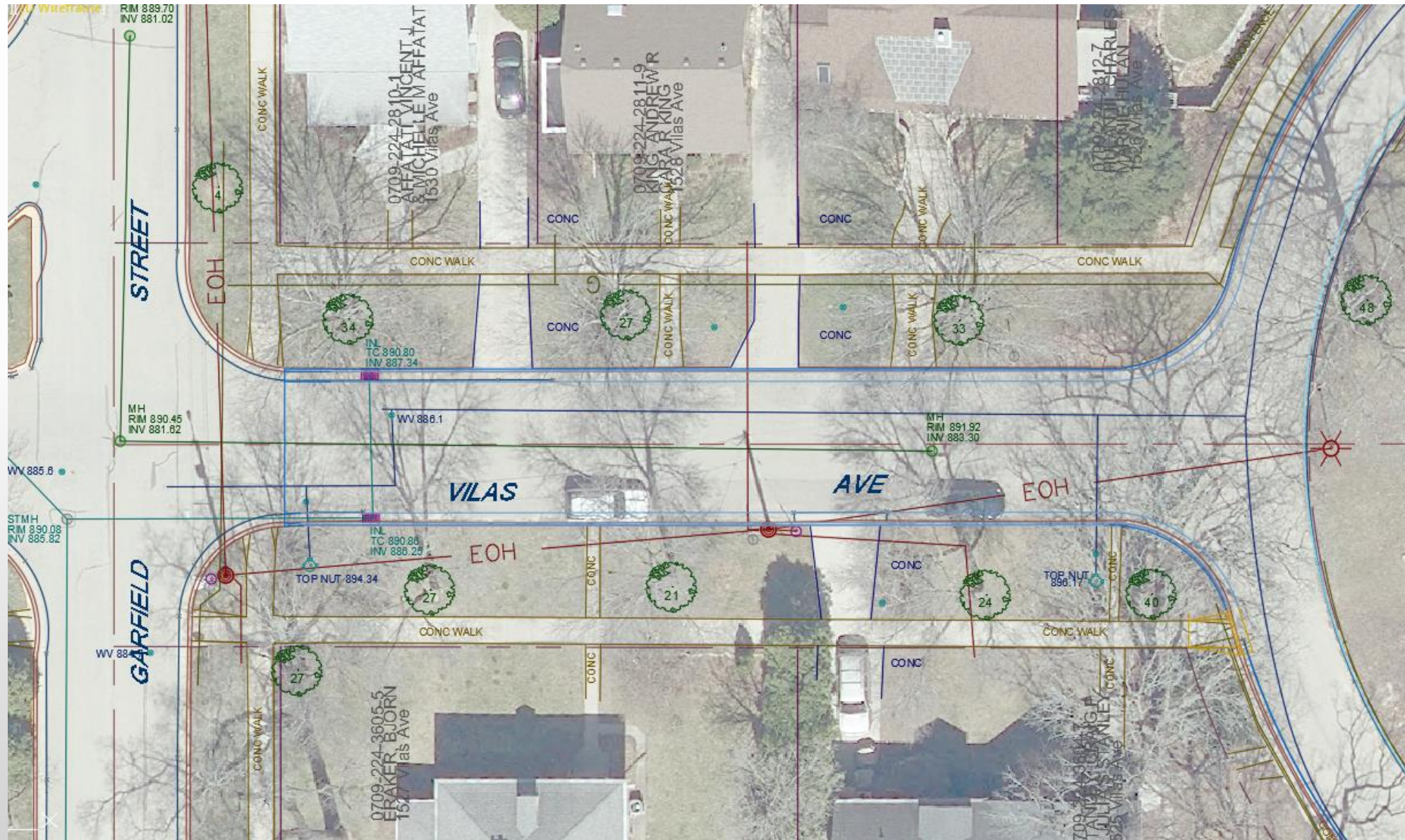


2. STREET RECONSTRUCTION – PROPOSED WORK DETAILS

- Remove all existing asphalt pavement and base aggregate to subgrade
- Adjust horizontal alignment as needed to avoid impacts to Bear Mound Park
- Regrade cross slope of roadway to improve surface water drainage
- Install new roadway base aggregate and asphalt pavement
 - Overall street widths to remain the same
- Replace concrete curb and gutter and drive aprons as needed
 - Salvage newer curb on Vilas Ave around south perimeter of Bear Mount Park
- Replace concrete sidewalk as needed
- Replace concrete terrace walkways (owner can request removal)

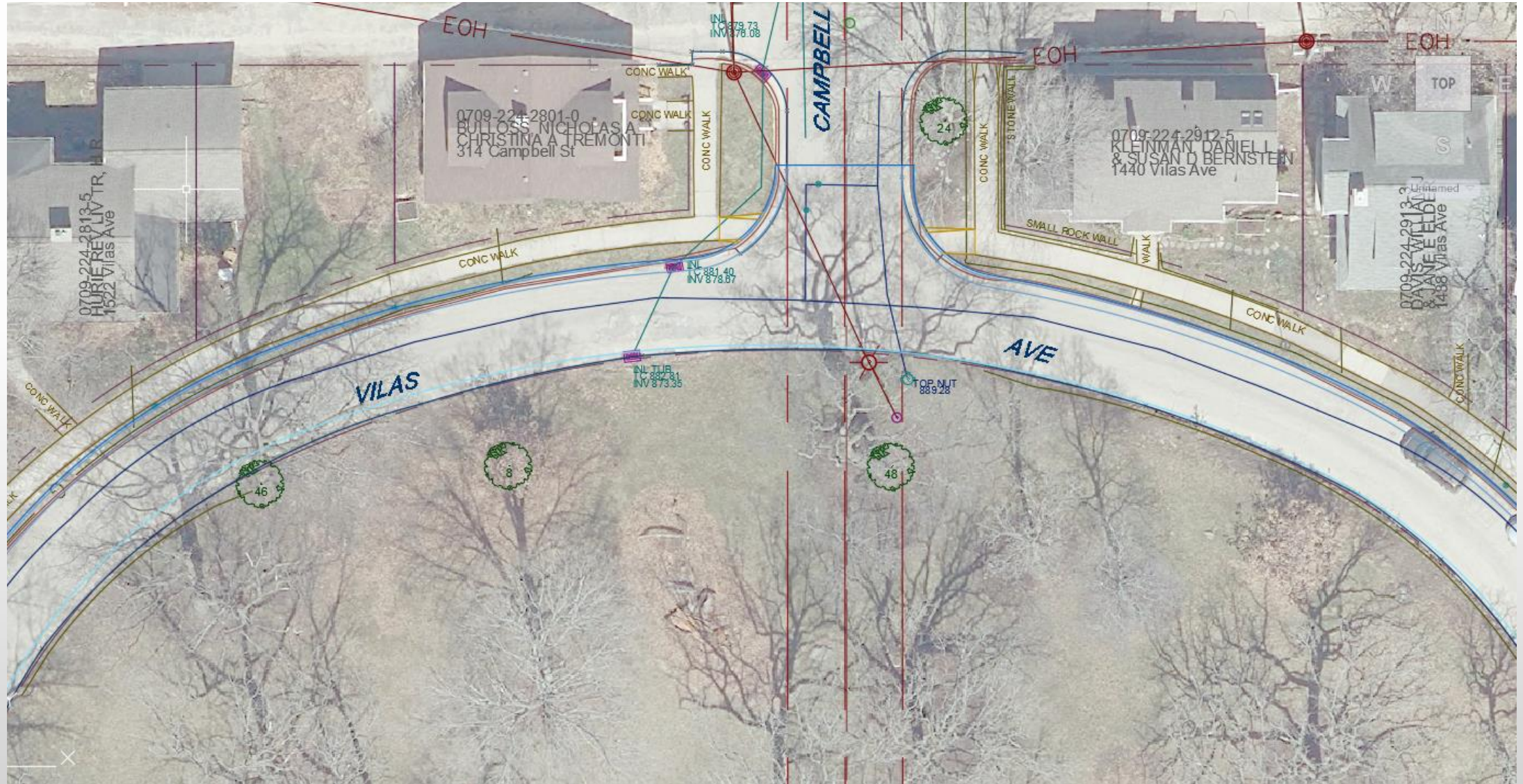


2. STREET RECONSTRUCTION – VILAS AVE WEST SIDE



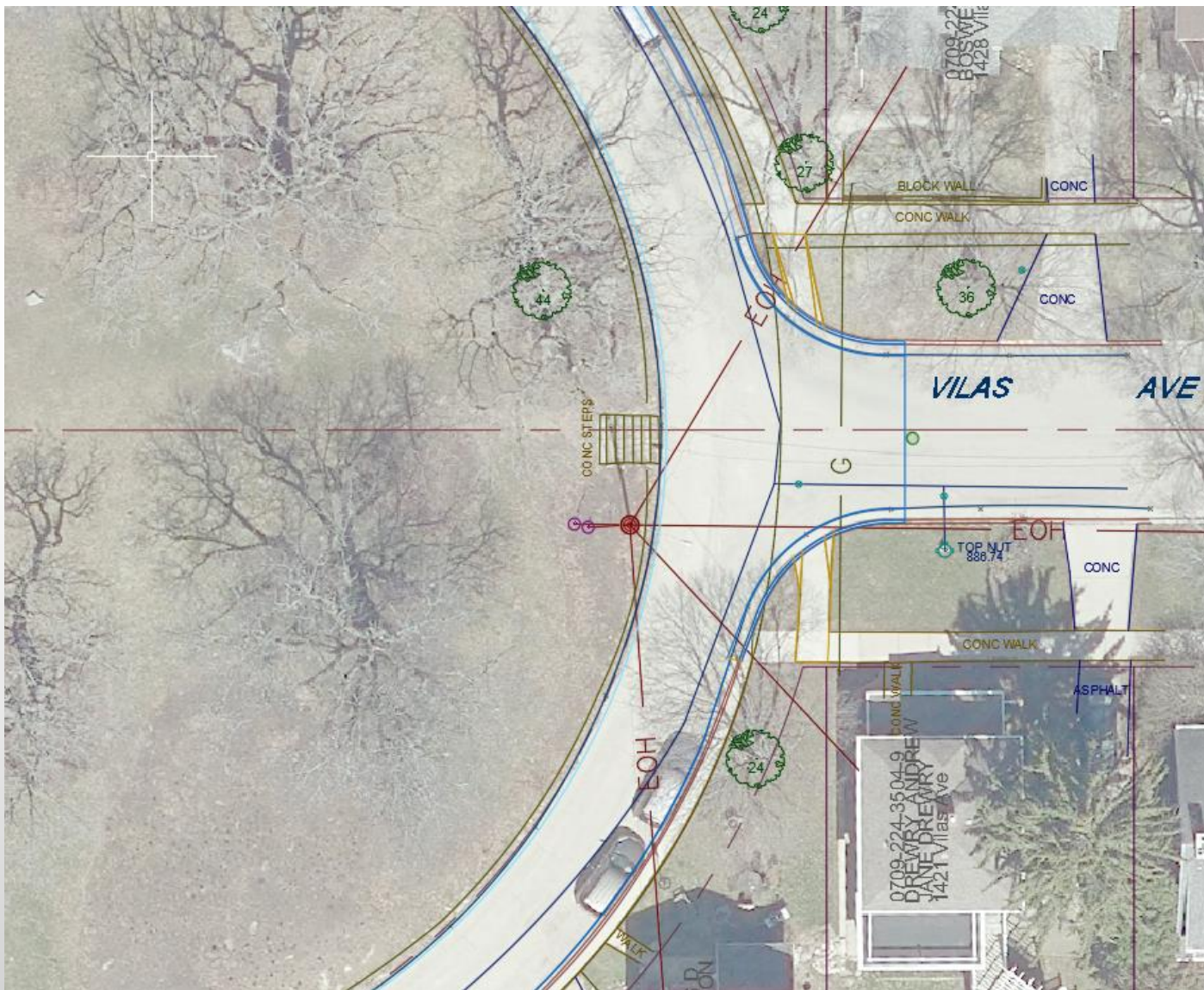


2. STREET RECONSTRUCTION – VILAS AVE NORTH SIDE



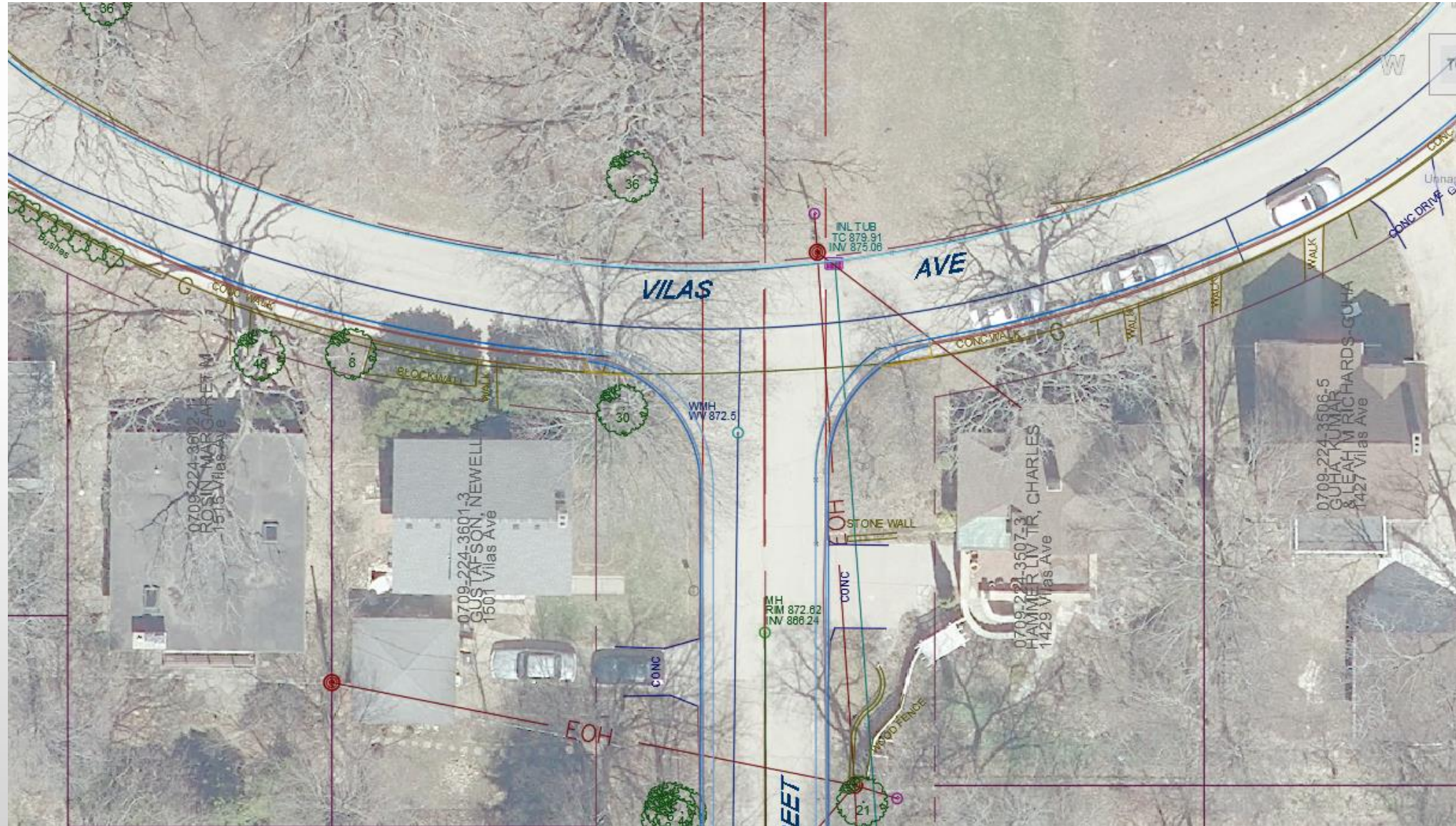


2. STREET RECONSTRUCTION – VILAS AVE EAST SIDE



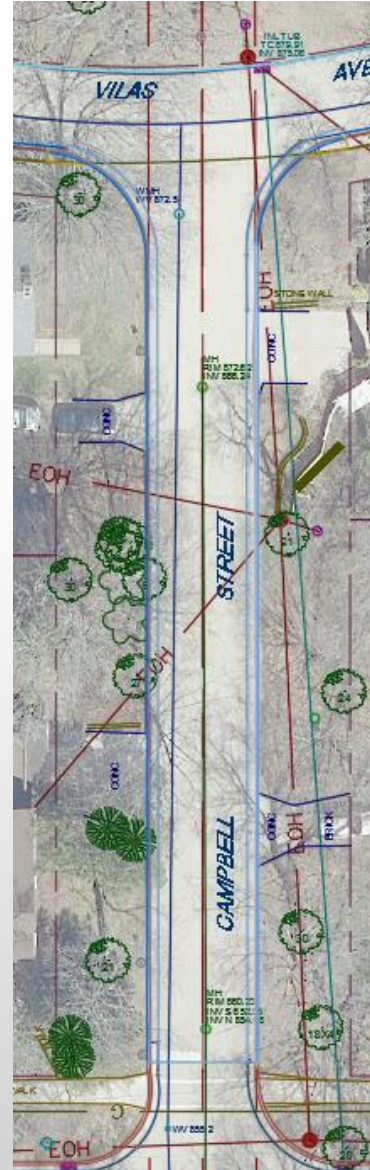


2. STREET RECONSTRUCTION – VILAS AVE SOUTH SIDE





2. STREET RECONSTRUCTION – CAMPBELL ST TO DRAKE ST





ASSESSMENT POLICY & COSTS

- **Traffic Impacts:** The streets will be closed to through traffic within the project limits, but will be open to local traffic (residents). No parking will be allowed during the day for the project duration, however, overnight parking will be available to local traffic. Residential driveways may be closed for up to 20 days. Residents will be given advanced notice when access to driveways will be restricted.
- **Water Shut-offs:** An average of two water shut-offs are expected for each property within the project limits. A minimum of 48 hours of notice will be provided prior to the shut-offs. Each shut-off may last up to 8 hours, but typically last about 4-6 hours. At the start of construction, the existing main will remain in service until the new main is installed and connected to. Emergency shut-offs may occur if the existing main is damaged during construction.
- **Refuse Collection:** It will be the contractor's responsibility to allow for refuse collection to continue during construction. Please mark your address on your cart to make sure it is returned if moved. Expect brush collection operations to be postponed for the project duration.



2. STREET RECONSTRUCTION – PROPOSED WORK

- Owners must remove any encroachments from the terrace area and public right-of-way prior to the start of construction
- Included raised planting beds, stone landscaping, retaining walls, railings, pavers, planters, etc.
- If left in place, these items will be removed by the contractor
- The contractor will not replace these items following completion of the project



3. ADDITIONAL COORDINATION - MGE

- Project will be coordinated with Madison Gas and Electric for
 - Existing underground gas facilities
 - Existing overhead and underground electric facilities
- Utility relocations may be required as part of this project
- Extent of private utility work unknown at this time



3. ADDITIONAL COORDINATION - FORESTRY

- City Engineering will review the project with City Forestry and a Forestry representative will work with contractor and inspector during construction
- Trees will be pruned prior to construction to provide required clearance above street
- A list of expected tree removals will be provided as part of future mailings
- Forestry staff will evaluate the terrace for new planting sites and potential replacement sites when the project is complete



3. ADDITIONAL COORDINATION – BEAR MOUND PARK

- Project to be coordinated with the Wisconsin Historical Society
- Prior to construction, projects with a Wisconsin Historical Site located within the project limits are reviewed by a professional archeologist and reported to WHS
- Report to include analysis of previous construction boundaries and recommended actions and protections for the site during construction.



ASSESSMENT POLICY & COSTS

Item	City Share	Owner Share
Curb, Sidewalk, Drive Aprons	50%	50%
Sanitary Laterals	75%	25%
Private Storm Connection	0%	100%
Asphalt Pavement	100%	0%
Sanitary & Storm Mains	100%	0%
Water Main	100%	0%
Sidewalk Ramps	100%	0%

- Assessments are payable as a lump sum or over 8 years with 4% interest.
- Final assessments will be mailed in the summer of 2020, following the project completion
- Final assessments will be calculated based on bid prices and measured quantities



PROJECT CONTACTS

Title	Name	Phone	Email
Project Manager	Reid Stiteley	608-266-4093	rstiteley@cityofmadison.com
Historical Coordination	Phil Gaebler	608-266-4059	pgaebler@cityofmadison.com
Traffic	Jeremy Nash	608-266-6585	jnash@cityofmadison.com
Storm & Sanitary Sewer	Daniel Olivares	608-261-9285	daolivares@cityofmadison.com
Water	Amanda Schockling	608-261-9243	aschockling@cityofmadison.com