

# Capital City Path – Glacial Drumlin Trail Extension



Public Information Meeting  
City of Madison Engineering Division  
Thursday August 7th, 2025

*Thank you for attending. We will begin shortly...*

CITY OF MADISON



# Meeting Technical Housekeeping

- This meeting will be recorded and posted to the project page.
- All attendees should be muted to keep background noise to a minimum.
- Use the “Q and A” button for technical issues with meeting to troubleshoot with staff to assist.
- Use the “Q and A” button to type questions about presentation. Questions will be answered live after the presentation.
- Inappropriate questions may be dismissed.
- Use the **“raise your hand”** button to verbally ask your question. You will be prompted to unmute when it is your turn.

**This meeting is being recorded.**

**It is a public record subject to disclosure.**

By continuing to be in the meeting, you are consenting to being recorded and consenting to this record being released to public record requestors.

**How to Participate**

zoom  
Workplace

Sign in

City of Madison

Choose one of the audio conference options

Phone call

Computer audio

Call Me

Join with computer audio

Test speaker and microphone

☐ Automatically join audio by computer when joining a webinar

^  
Audio

Raise hand

Q&A

^  
Show captions

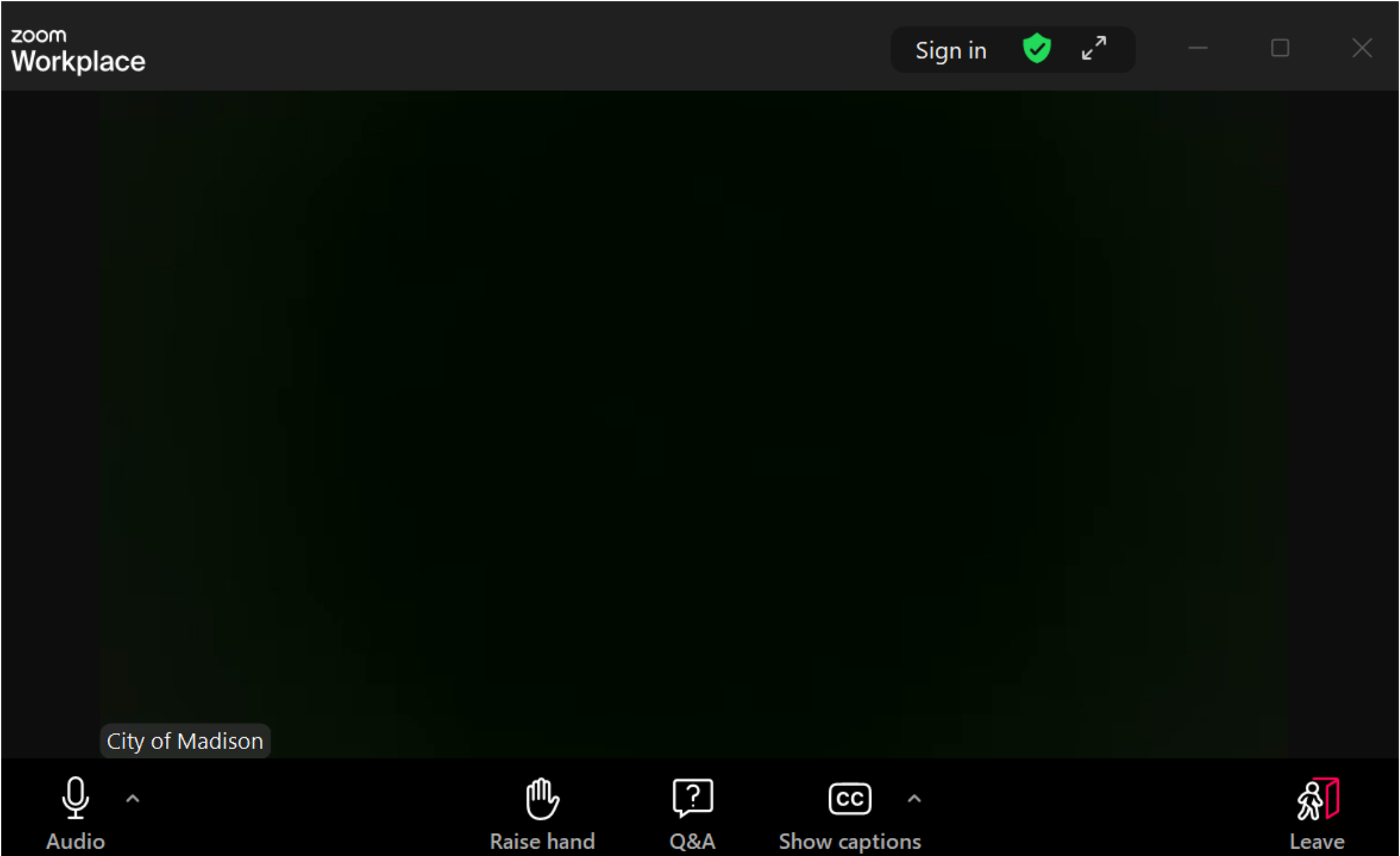
Leave

**Make sure to join audio**

CITY OF MADISON

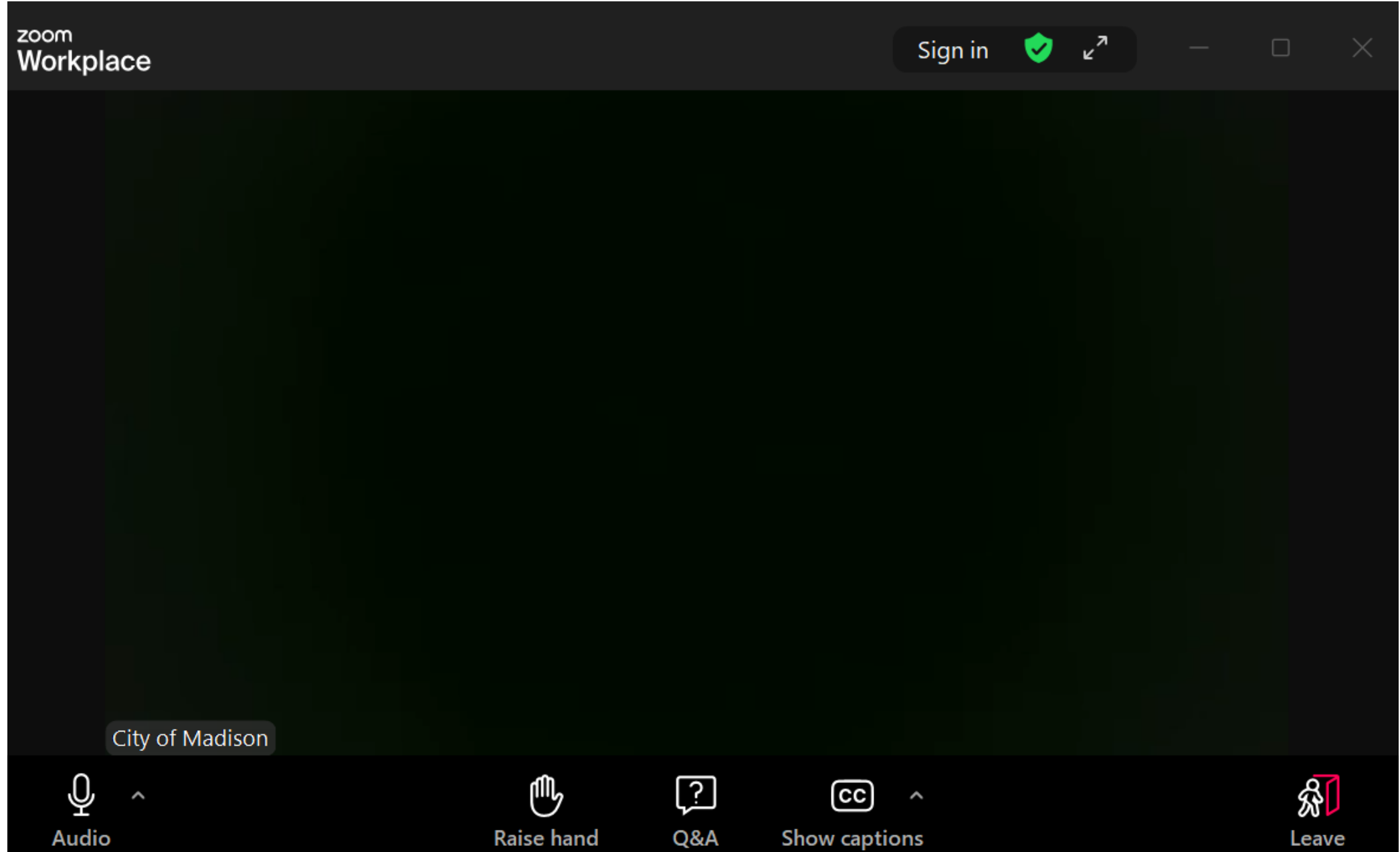
The logo for the City of Madison Engineering department, featuring a circular seal with a building and the text "CITY OF MADISON" and "ENGINEERING".

# How to Participate



**Raise your hand** to be unmuted  
For comments or ask additional questions. 

## How to Participate



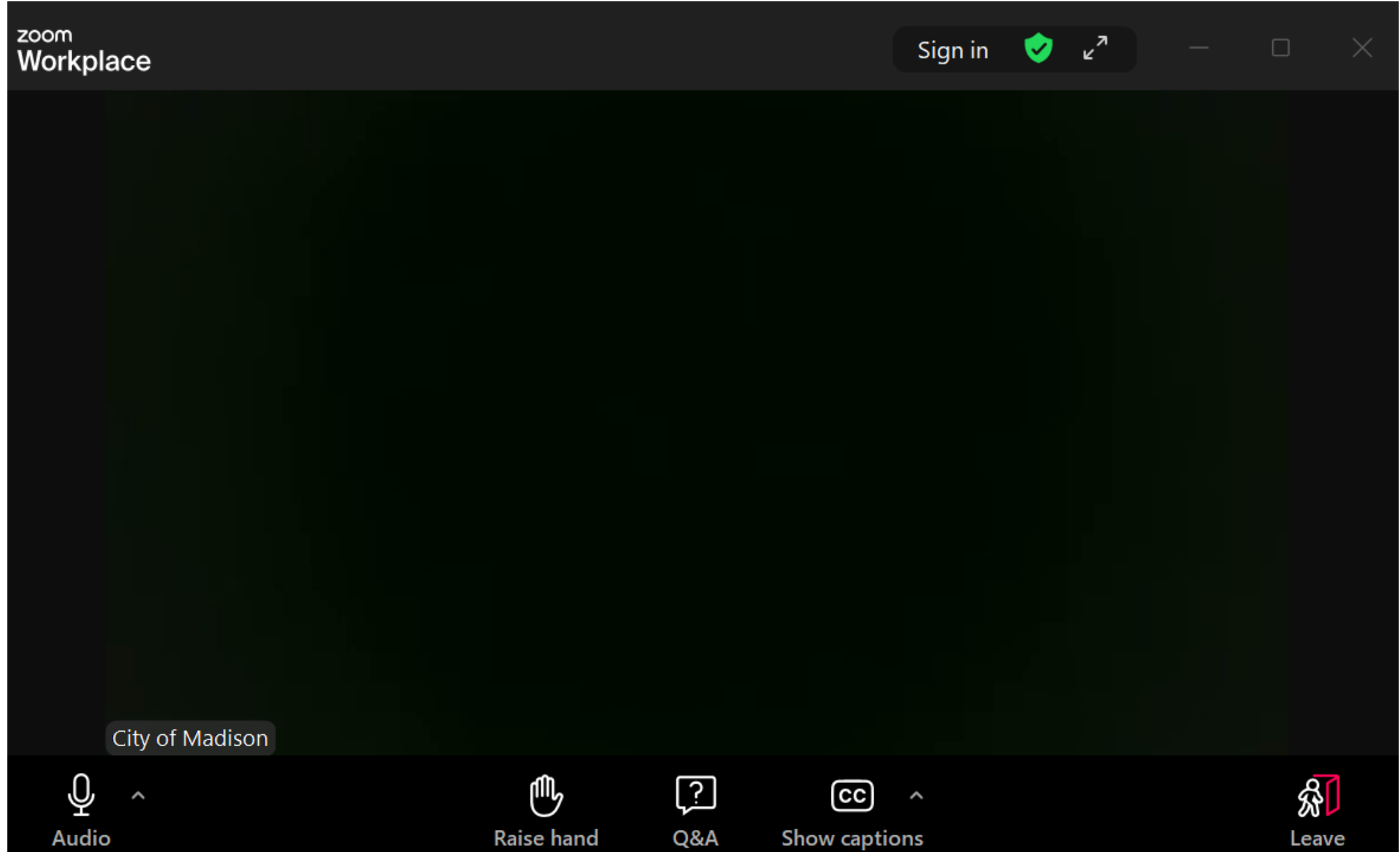
Use **Q&A button** if you have technical issues or a question for the panelists.



CITY OF MADISON



## How to Participate



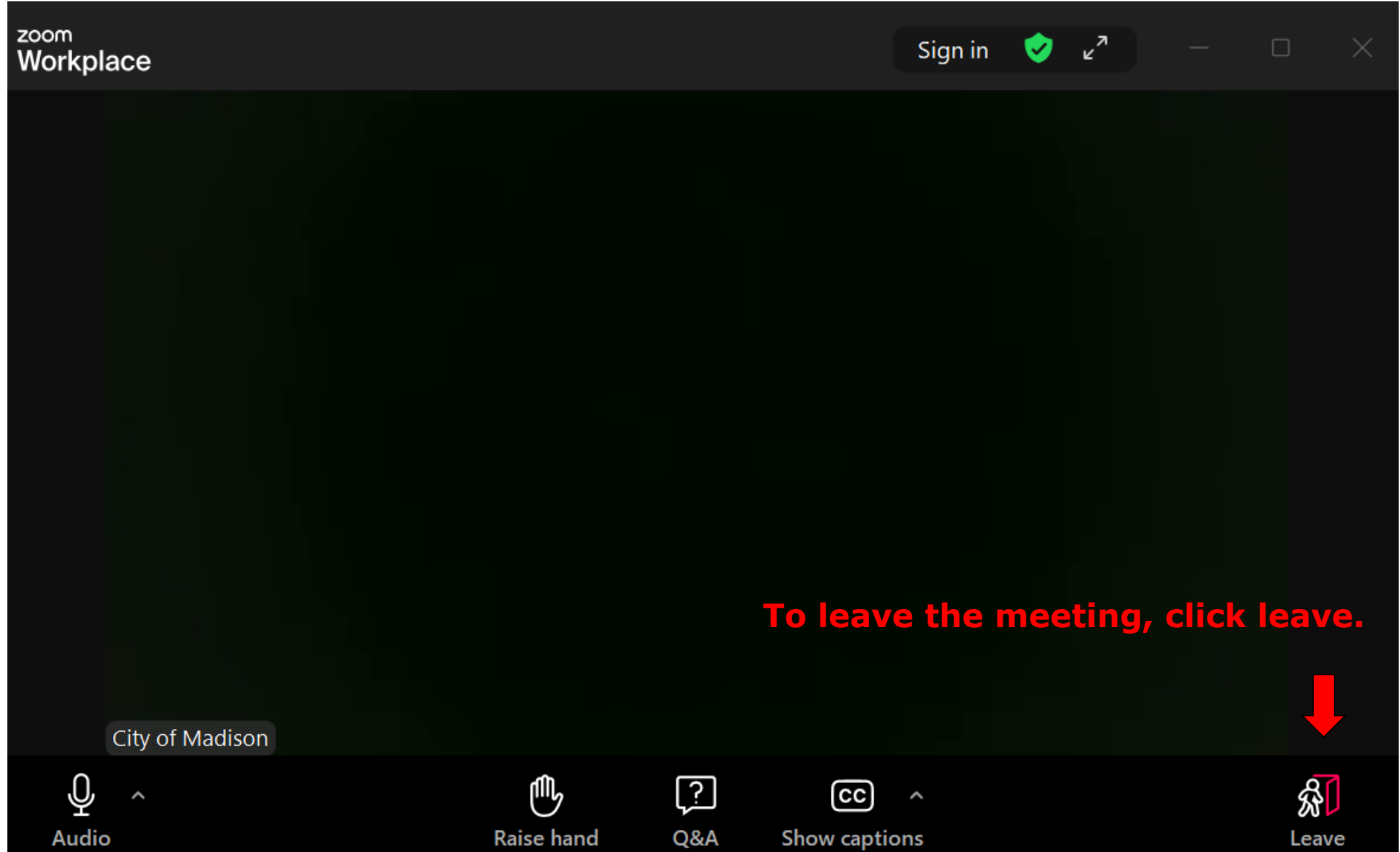
Use **Q&A button** for all other questions.  
We will answer after the presentation.



CITY OF MADISON



## How to Participate





## How to Participate

zoom  
Workplace

Sign in

**If you'd like to enable closed captioning, click "show closed captions" button on the bottom of the screen.**

**This may already be enabled. If this is not enabled, click the button to allow closed captioning.**

City of Madison

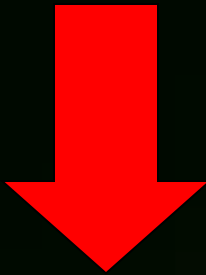
Audio

Raise hand

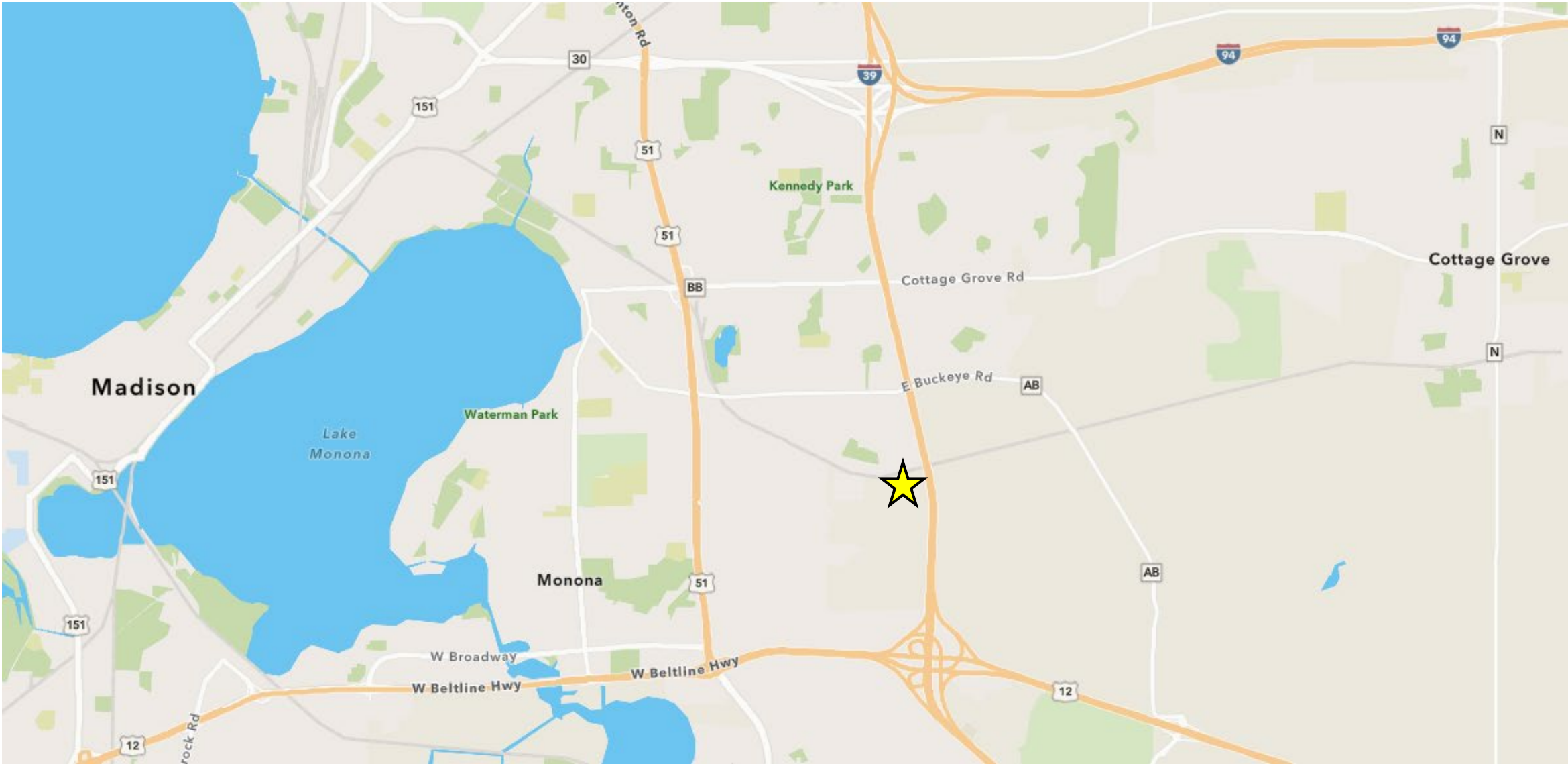
Q&A

Show captions

Leave



# Project Location



# Capital City Path – Glacial Drumlin Extension

- Long-standing goal to connect the Capital City Path (City of Madison) to the Glacial Drumlin State Trail (Village of Cottage Grove)
  - Once finished, will create a continuous 140-mile path across southern Wisconsin
- City of Madison and Dane County working together to finish the gap
- City project involves extending the Capital City Path to the east-side of the Interstate (39/90), using the existing Railroad underpass
  - Separate Dane County project to continue path to the east to E Buckeye Rd (CTH AB)
- Two (2) alternatives being considered for the City project
  - Chosen alternative is dependent on coordination with the Railroad and WisDOT

# Capital City Path – Glacial Drumlin Extension





# CAPITAL CITY PATH - GLACIAL DRUMLIN EXTENSION: ALTERNATIVE A (WAGON TRL)

FUTURE PATH CONNECTION  
TO GLACIAL DRUMLIN TRAIL,  
BUILT BY DANE COUNTY

PROPOSED PATH BUILT WITHIN EXISTING RAILROAD  
UNDERPASS UNDERNEATH INTERSTATE 39-90, MODIFY  
UNDERPASS WITH RETAINING WALLS AND RAILINGS

PROPOSED AT-GRADE  
PATH-RAILROAD CROSSING

WAGON TRAIL  
OXBOW BEND  
WISCONSIN & SOUTHERN RAILROAD (WSOR)

PROPOSED 10-FT  
WIDE ASPHALT PATH

PROPOSED BORE & JACK STEEL  
CASING PIPE WITHIN UNDERPASS  
LIMITS, INSTALL 8" PVC SANITARY PIPE

CITY GRANTED PED/BIKE PATH  
EASEMENT ON WISDOT LAND

PROPOSED 8" PVC SANITARY  
SEWER ALONG PATH

PROPOSED PATH LIGHTING  
ALONG ENTIRE PROPOSED PATH

PROPOSED CULVERT PIPES  
UNDER PATH TO MAINTAIN  
RAILROAD DITCH DRAINAGE

ABANDON EXISTING SANITARY  
SEWER IN PLACE WITH SLURRY

WISDOT WETLAND  
MITIGATION LAND

INTERSTATE 39/90



# Alternative A (Wagon Trail to Interstate)



Dead-end at Wagon Trail (looking south towards WSOR track)

Area of City Easement on WisDOT Lands for future path  
(looking east towards Interstate)





# Alternative A (Wagon Trail to Interstate)



Future path under rightmost span of the Interstate bridge in this photo (looking east towards existing RR underpass)

Future path under leftmost span of the Interstate bridge in this photo (looking west towards existing RR underpass)

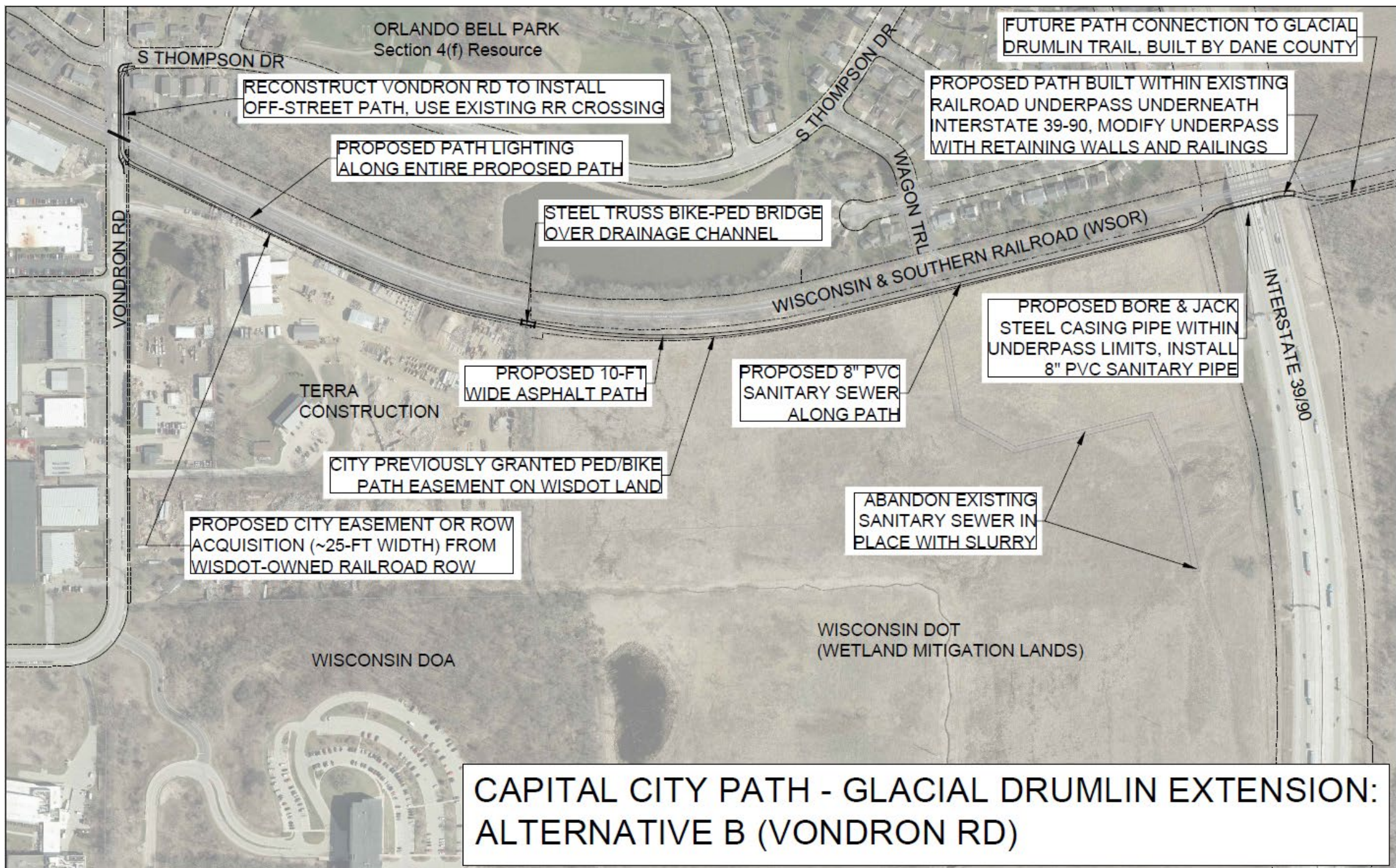




# Alternative A (Wagon Trail to Interstate)

- Off-street path built on existing City easement on WisDOT land (0.27 miles)
- Extend on-street bike connection along S Thompson Dr to Wagon Trail
  - Pavement marking improvements would be evaluated for this route
- Modify existing Interstate underpass to accommodate path next to RR track
  - Similar to Capital City Trail adjacent to RR track underneath the Beltline by John Nolen Dr
- Requires new at-grade, path-railroad crossing
  - Dependent on approval from the Office of the Commissioner of Railroads (OCR)
  - Wisconsin and Southern Railroad (WSOR) would likely oppose the new crossing
  - Approval process is long and uncertain







# CAPITAL CITY PATH - GLACIAL DRUMLIN EXTENSION: ALTERNATIVE B (VONDRON RD)

EXISTING VONDRON RD RR  
CROSSING DEVICES TO  
REMAIN AS-IS, CURB SHIFTED  
FOR OFF-STREET PATH

PROPOSED CITY EASEMENT OR ROW ACQUISITION  
(~25-FT WIDTH) FROM WISDOT-OWNED RAILROAD ROW

PROPOSED PATH LIGHTING  
ALONG ENTIRE PROPOSED PATH

STEEL TRUSS BIKE-PED BRIDGE  
OVER DRAINAGE CHANNEL

VONDRON RD

10-FT WIDE  
ASPHALT PATH

EXISTING RR ROW

WISCONSIN & SOUTHERN RAILROAD (WSOR)  
CITY OF MADISON STORMWATER LAND

TERRA CONSTRUCTION

POTENTIAL WALL NEEDED TO AVOID  
GRADING ON PRIVATE PROPERTY

EXISTING CITY PED/BIKE PATH  
EASEMENT ON WISDOT LAND





# Alternative B (Vondron Rd to Interstate)



Future path along southern-edge of RR ROW, between tree line and pink stake (looking east from Vondron Rd)

Future path along southern-edge of RR ROW, between tree line and pink stake (looking west towards Vondron Rd)





# Alternative B (Vondron Rd to Interstate)

- Extend off-street path to Vondron Rd (0.8 miles)
  - Does not require a new at-grade, path-railroad crossing, use existing Vondron crossing
  - Substantially longer project => increased cost
  - Additional bridge needed over drainage channel, potential for other retaining wall needs
  - Additional off-street path to connect to S Thompson Dr – could also be done with markings
- Requires land acquisition and/or easement on WisDOT-owned Railroad ROW
  - Specifics for land rights/easement being worked out currently
- Modify existing Interstate underpass to accommodate path next to RR track  
(same as Alternative A)

# Project Schedule

- Public Informational Meeting: August 7, 2025
- *Tentative Alternative Selection: Summer – Fall 2025*
- Transportation Commission: Fall 2025 – Winter 2026
  - Project Page updated once Alternative Selected with TC date
- Board of Public Works: Fall 2025 – Winter 2026
- Common Council: Fall 2025 – Winter 2026
- Advertise Contract for Bids: Fall 2026
- *Tentative Construction: Spring/Summer 2027*

# Construction & Access

- Construction in Spring/Summer 2027
- Standard work hours 7am-7pm Mon-Sat; 10am-7pm Sun
- Impacted nearby residents will be notified of construction timeframe/impacts prior to start
- No Assessments
- Project is receiving Federal Funds through the Transportation Alternatives Program (TAP) – facilitated through WisDOT

# Contact Information & Resources

- Project Manager/Designer, Aaron Canton, (608) 242-4763, [acanton@cityofmadison.com](mailto:acanton@cityofmadison.com)
- Pedestrian & Bicycle Administrator, Kevin Luecke, (608) 266-6225, [kluecke@cityofmadison.com](mailto:kluecke@cityofmadison.com)
- City Project Webpage: <https://www.cityofmadison.com/engineering/projects/capital-city-path-segment-4-6-vondron-road-to-i-39-90>
  - Sign-up for updates on road closures & work progress
  - Presentation recording & slides posted to project page
- Dane County Project Page: <https://www.danecountyparks.com/parksproject/detail/Glacial-Drumlin-to-Capital-City-Connector-Trail>
- Facebook – City of Madison Engineering
- Twitter – @MadisonEngr
- Everyday Engineering Podcast – search “Everyday Engineering” on Apple iTunes or GooglePlay



# Q & A