



PINNEY LIBRARY

COMMUNITY UPDATE

OPN
ARCHITECTS

11 / 09 / 2017

Walla

CURRENT TIMELINE



Studies the world of possibilities, set aspirations, and identifies the major ideas to move forward.



Blends the project goals, design thinking, and physical realities into spatial concepts.



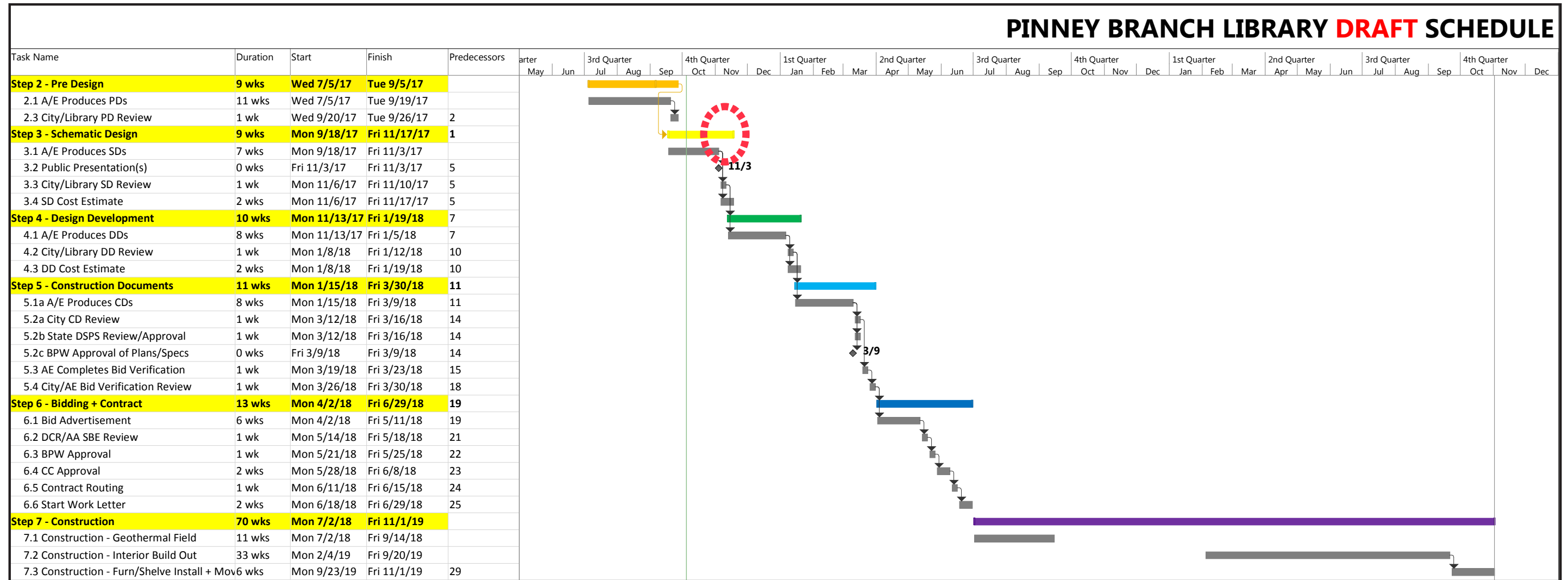
Pushes the spatial concepts into reality by defining specific forms, materials, and building systems.



Develops detailed drawings that provide instruction about assembling the building's various components.



Delivers documents for selection of contractor and ensures original design vision is maintained during construction.



PASSION LED US HERE



- **Provide a flexible, interactive, and technology-rich platform for the community**
- **Sustain and support a high level of interaction between patrons and staff**
- **Emphasize collections prominently, whether print or digital, in every space**
- **Foster community collaboration and cultural inclusion**



KEY SKILL DEVELOPMENT FOCUS AREAS

- TALK
- SING
- WRITE
- PLAY
- READ

The PlayLab will focus on promoting **child and caregiver interaction**, providing **child led activities**, being **visually inclusive**, and promoting early literacy with **print at the forefront**. Creating a flexible space that allows children to create their own story and environment will be key to its success rather than providing a defined set of parameters to play around.

PRINCIPLES OF ANJIPLAY

- LOVE
- JOY
- RISK
- ENGAGEMENT
- REFLECTION



A red brick wall featuring three arched windows with corrugated metal shutters. A mural on the left shows a hand holding a paintbrush, with the words 'I T L' visible. The phrase 'Together, We Create!' is painted in a stylized font across the middle of the wall.

Together, We Create!



- PINNEY STAFF VISIONING
- PINNEY TOUR
- STAFF DISCUSSION OF CONCEPTS AND IDEAS
- MPL ALL STAFF WORKSHOP
- MPL BRANCH LIBRARIES BENCHMARKING
- CIRCULATION & COLLECTIONS
- ART STAKEHOLDERS

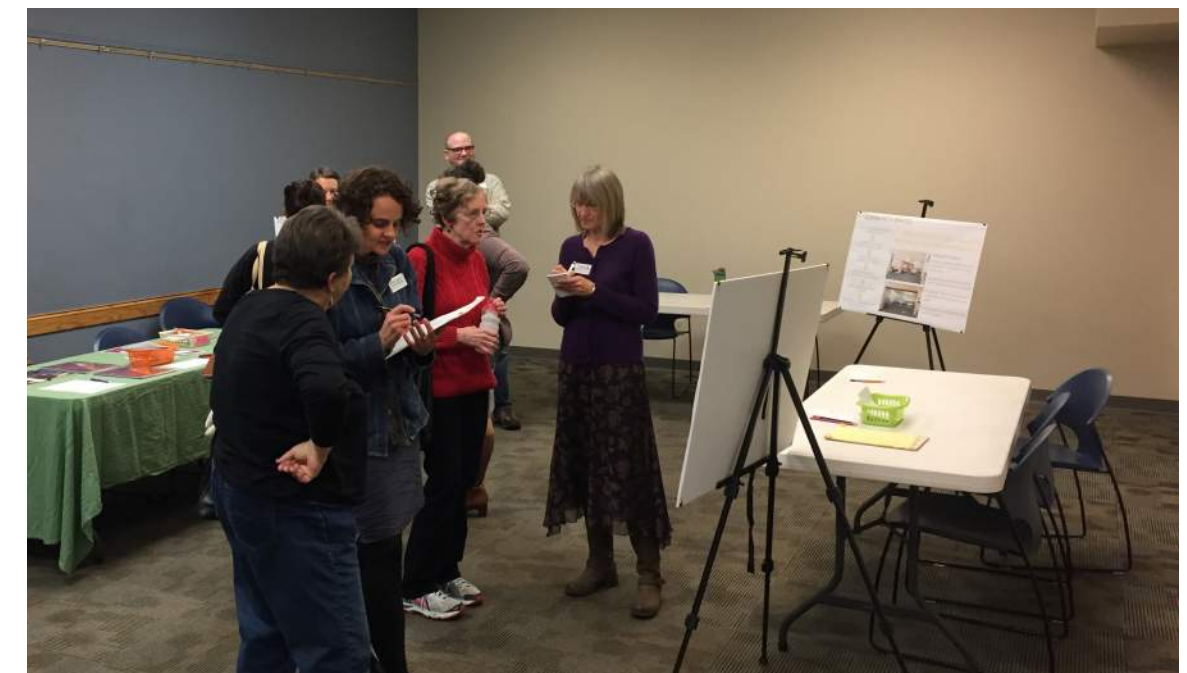
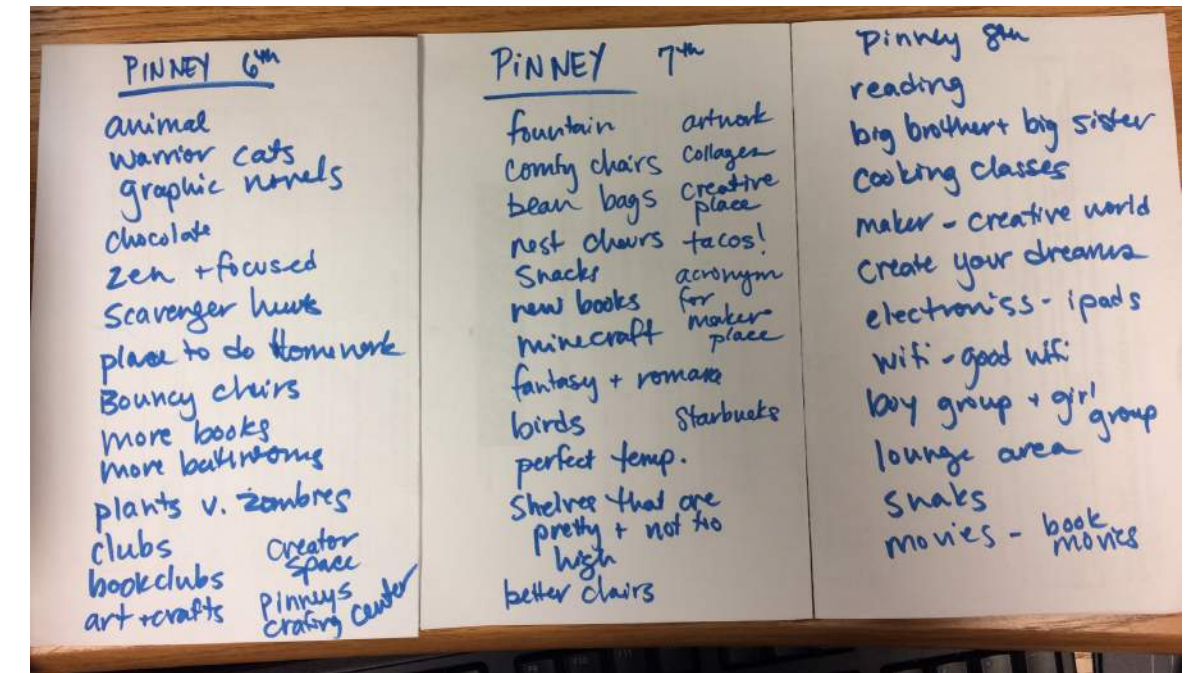


COMMUNITY ENGAGEMENT

- COMMUNITY “MEET THE ARCHITECT”
- COMMUNITY STAKEHOLDERS INVOLVEMENT AND FEEDBACK
- COMMUNITY “OPEN HOUSE”
- COMMENT CARD REVIEW
- QUESTION BOARDS
- LOCAL MIDDLE SCHOOL FEEDBACK

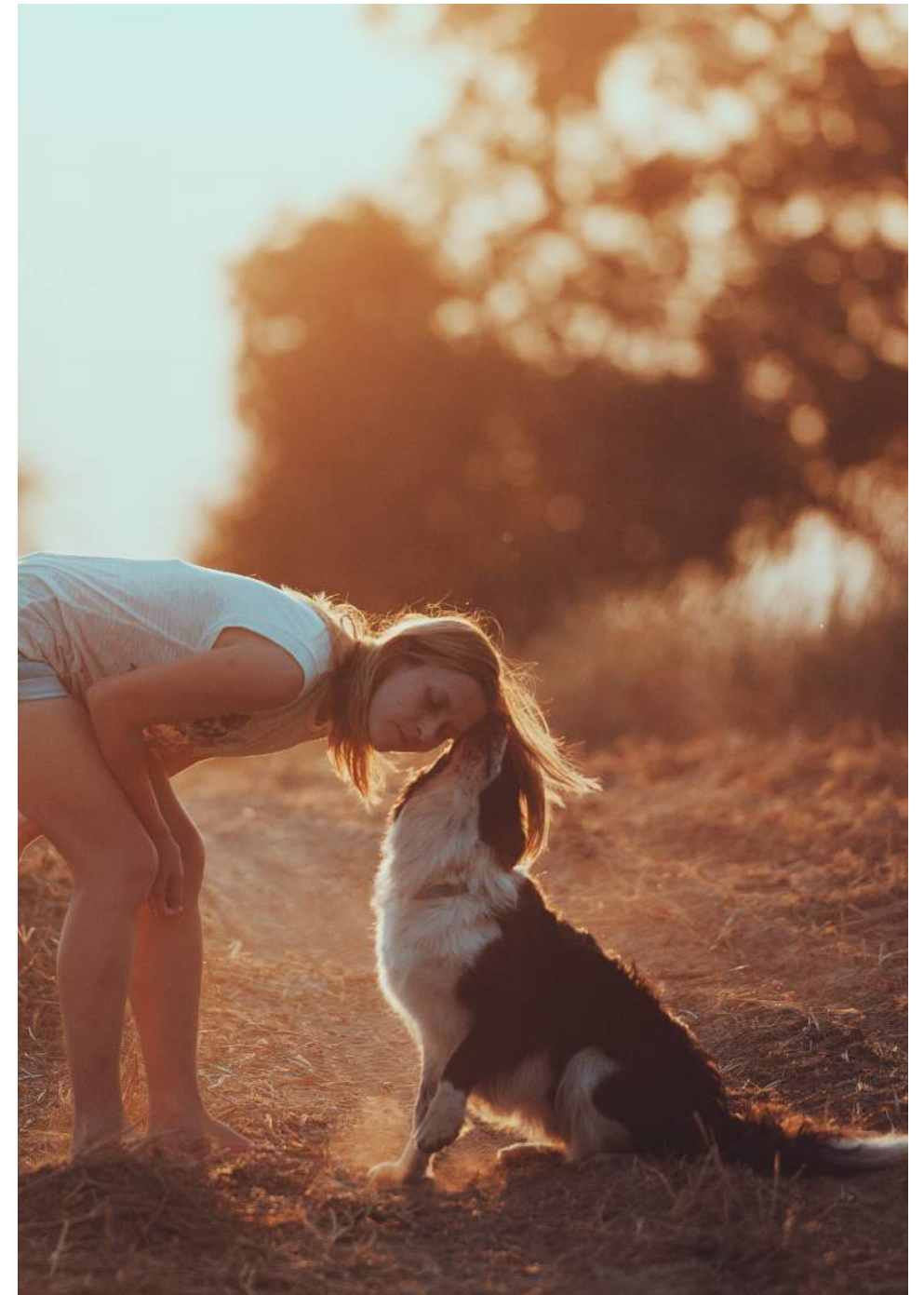


WHITEHORSE AND O'KEEFE MIDDLE SCHOOL IDEAS



EMERGING THEMES

- INCLUSION
- WELCOMING
- HEALING ENVIRONMENT
- QUIET READING/STUDY SPACES
- CREATE COMMUNITY SPACES
- WARM AND INVITING
- CONNECTION TO THE OUTDOORS



VISIONING AND AESTHETIC EXERCISES



LIBRARY STAFF AND CITY ENGAGEMENT



SPACE PROGRAM DEVELOPMENT



COMMUNITY INPUT AND INFORMATION GATHERING

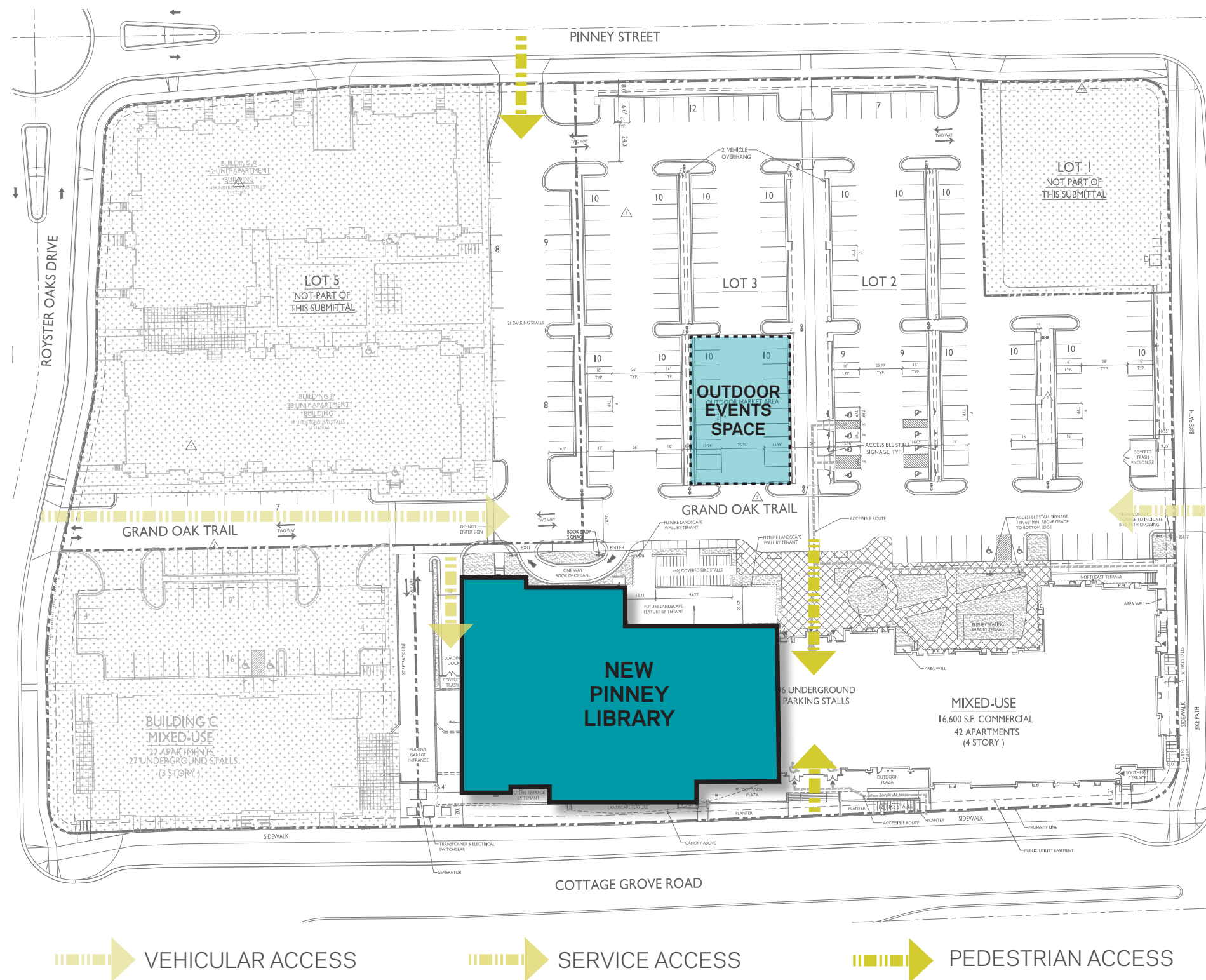


ADJACENCY DIAGRAM EXPLORATION



PRELIMINARY MECHANICAL, ELECTRICAL, & PLUMBING
SYSTEMS DEVELOPMENT

EXISTING BUILDING SHELL



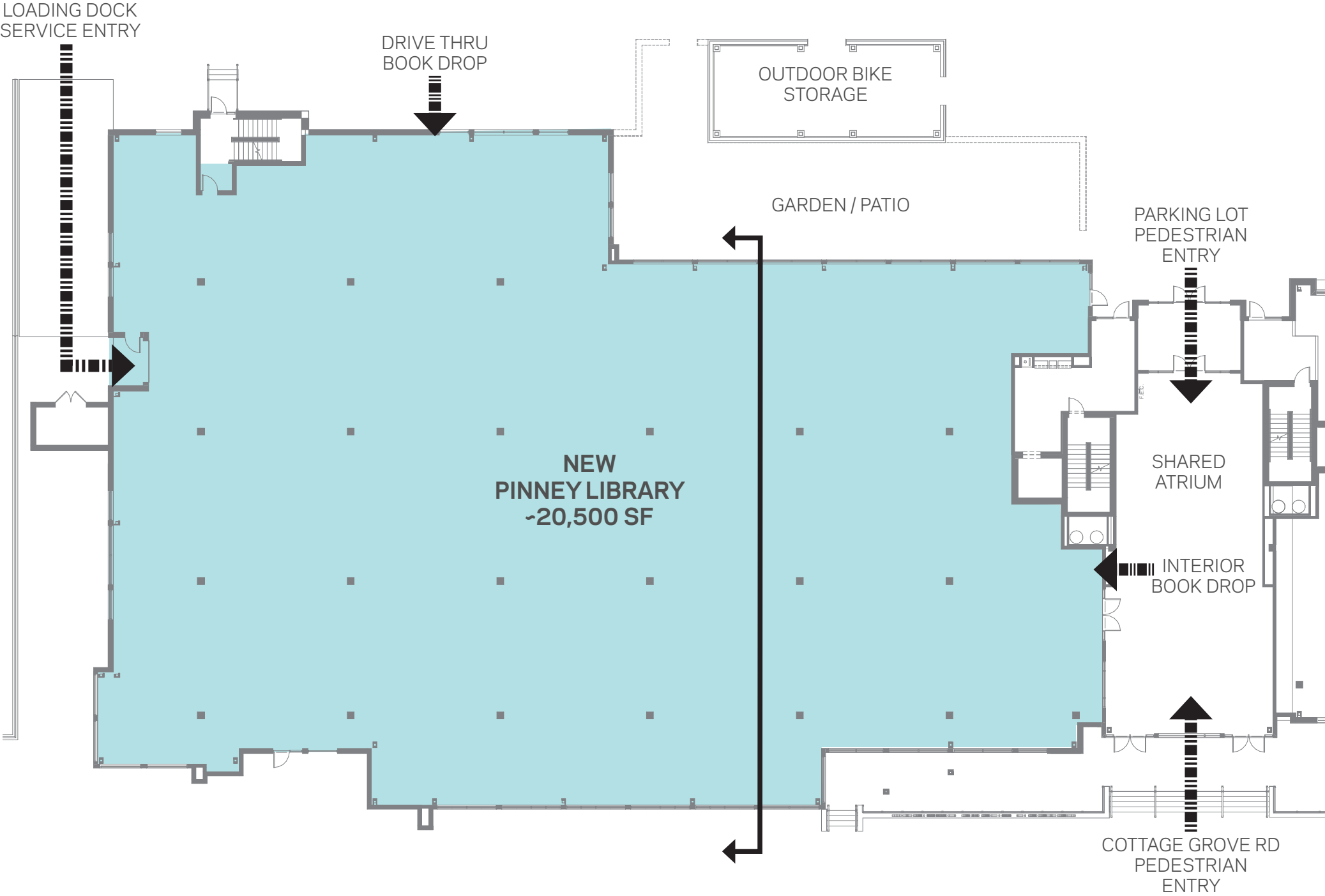


EXISTING BUILDING SOUTH ELEVATION - Knothe Bruce Architects



EXISTING BUILDING NORTH ELEVATION - Knothe Bruce Architects

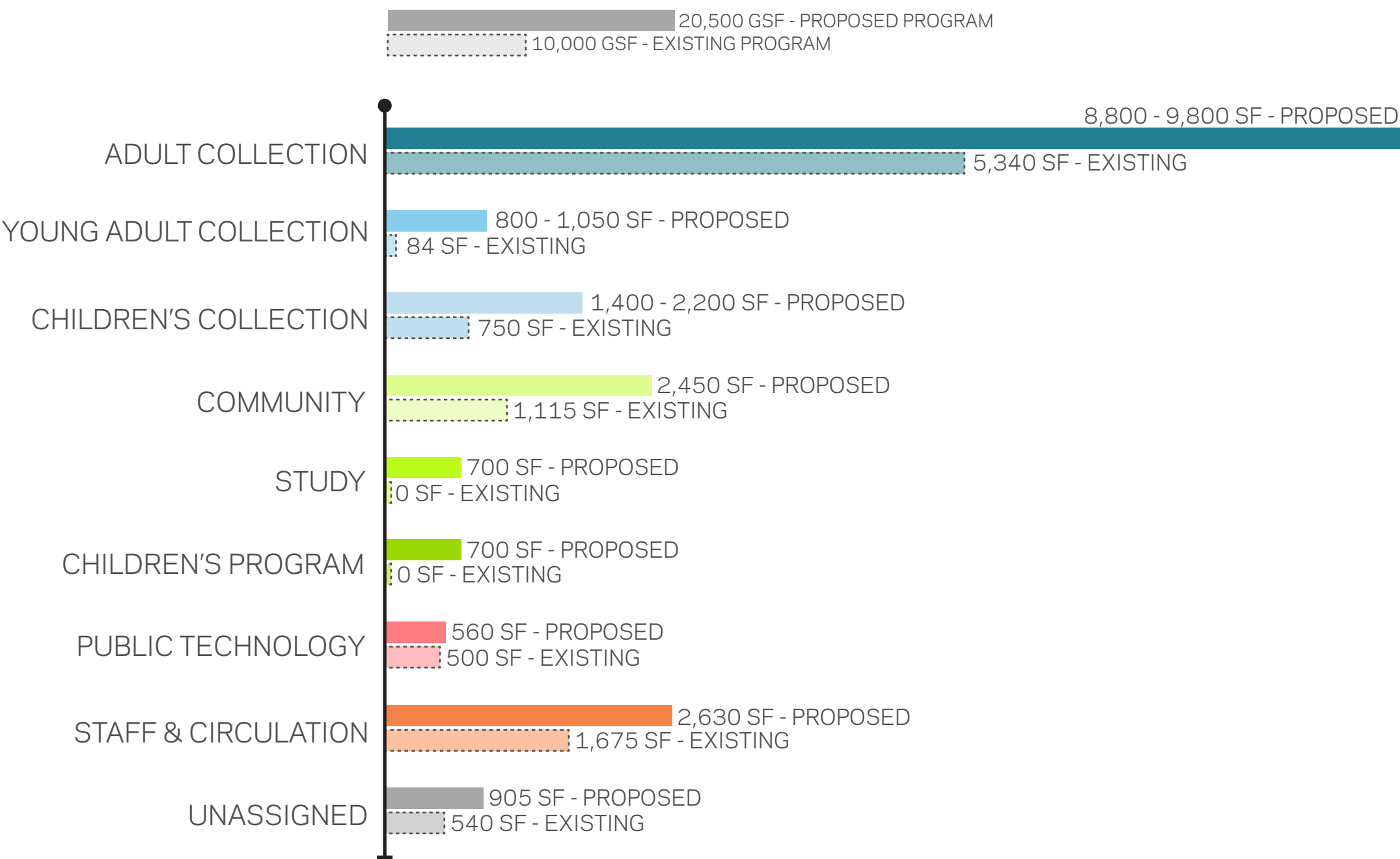
SHELL SPACE FLOOR PLAN



PINNEY LIBRARY PROGRAM

DO SOMETHING GREAT

NEW vs. OLD PROGRAM COMPARISON



ADJACENCY DIAGRAMS



ADJACENCY DIAGRAM EXPLORATION



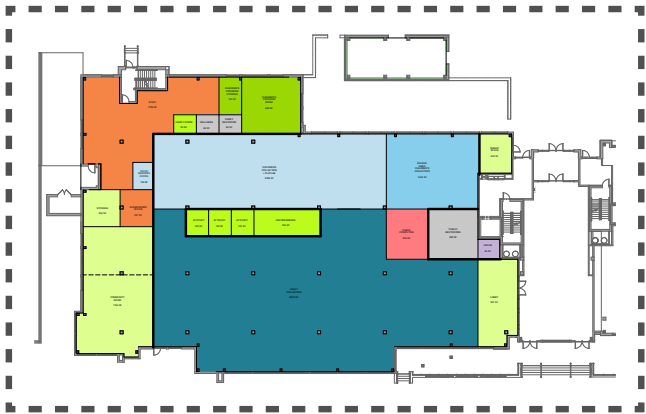
OPTION 1



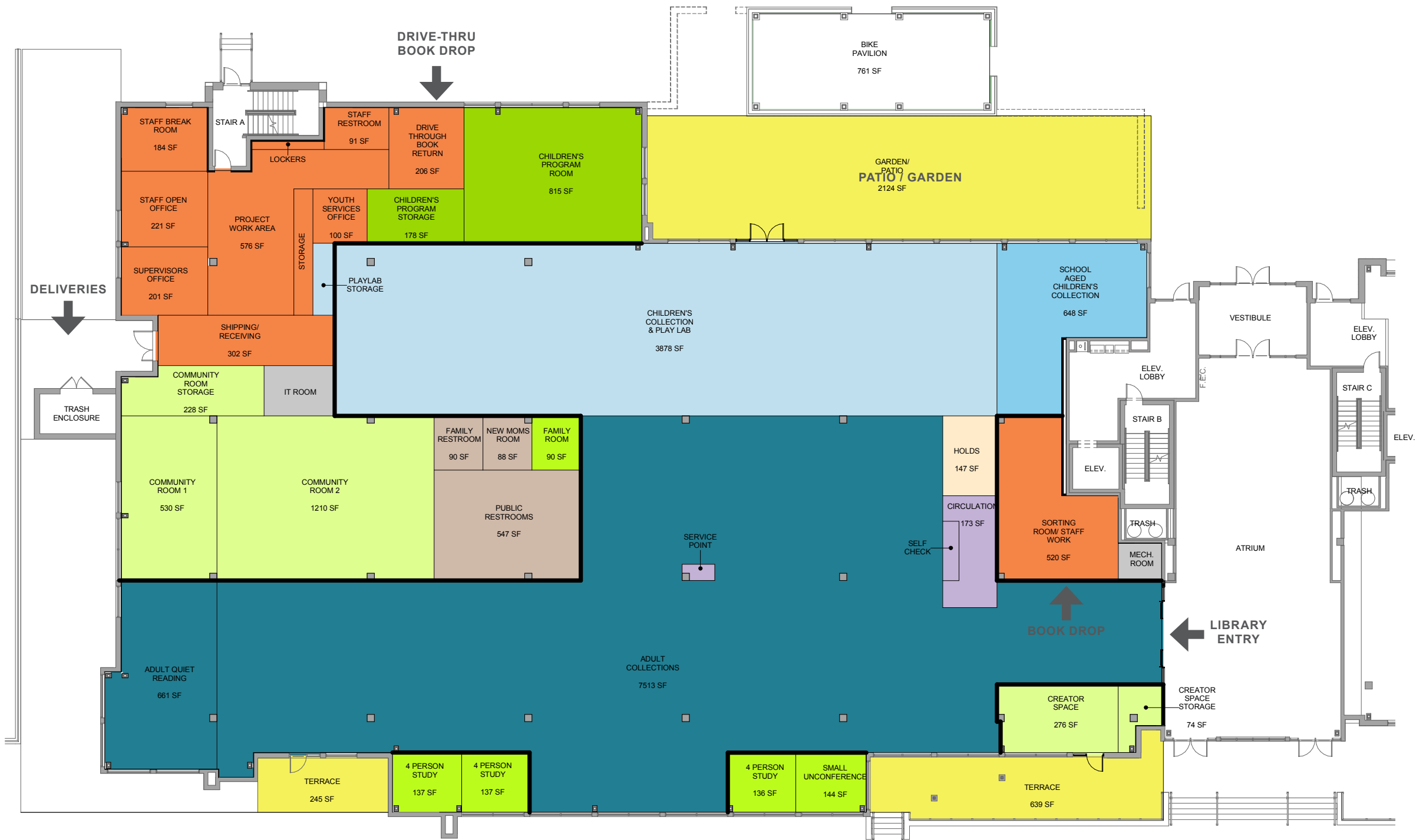
OPTION 2



OPTION 3



RECONCILED FLOOR PLAN



What is the greatest community need that you hope Pinney Library can champion in the new space?

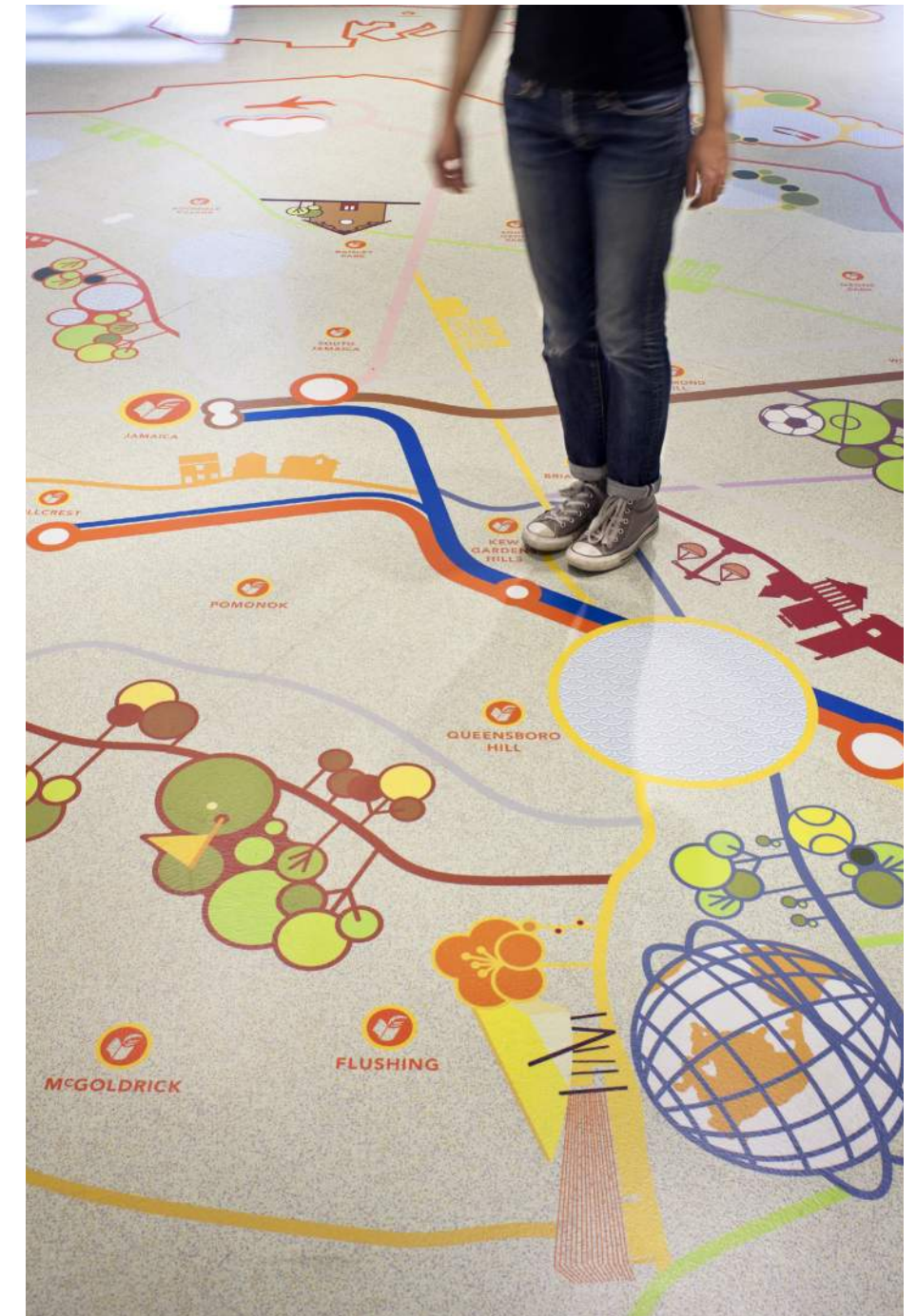
DESIGNING FOR INCLUSION

- Flexibility and Variety of Technology
- Simplicity in Choice of Tools
- Awareness of Multicultural Context and Cultural Differences
- Welcoming
- Visibility
- Safety
- Full Participation
- Respectful Relationships



DESIGN CONSIDERATIONS

- Ease of Technology Use
- Signage
- Wayfinding
- A space to visually celebrate culture(s)
- A sense of safety and welcoming
- Gender Free Restrooms
- Going beyond ADA
- Hearing Loop in Large Community Room
- Literacy of Languages
- Literacy of Cultures
- Equal Access to All
- Supporting diversity through engagement / programming



How will the library reflect the diverse community and help to break down social and economic barriers?

Together we will design the building,
but what fills it is what will make it a
reflection of the community.

What would make Pinney a true
reflection of the neighborhood and
community?



QUESTIONS

THANK YOU

