



BID TALK

CCB Remodel DCR 104 and 108A

City of Madison Engineering Division
December, 13, 2024

Thank you for attending. We will begin shortly...

CITY OF **MADISON**



Meeting Technical Housekeeping

- This meeting will be **recorded** and posted to the project page.
- All attendees should be **muted** to keep background noise to a minimum.
- Use the **“Q and A”** button to type questions about presentation. Questions will be answered live after the presentation.
- Inappropriate questions may be dismissed.
- Use the **“raise your hand”** button to verbally ask your question. You will be prompted to unmute when it is your turn.



This meeting is being recorded.

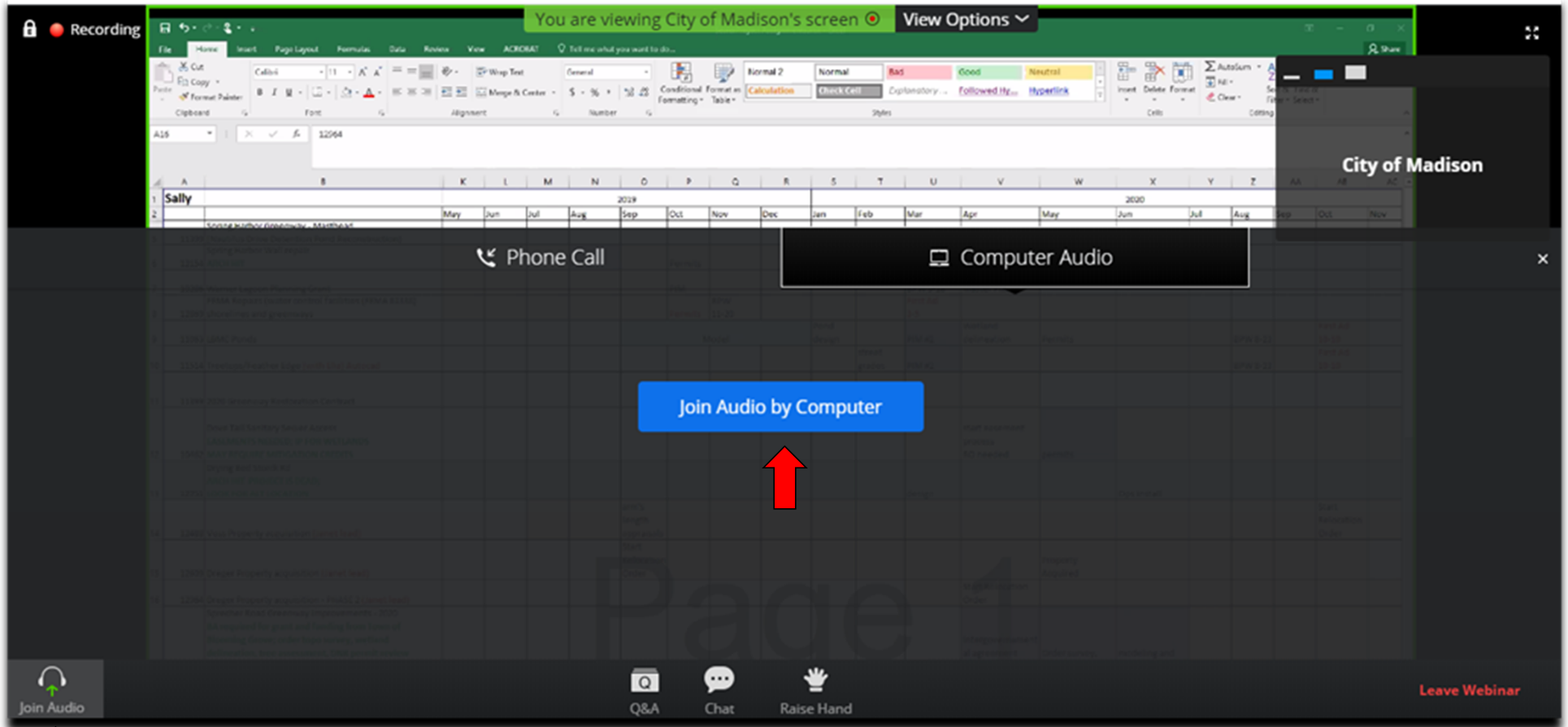
It is a public record subject to disclosure.

By continuing to be in the meeting, you are consenting to being recorded and consenting to this record being released to public record requestors.

CITY OF **MADISON**



How to Participate

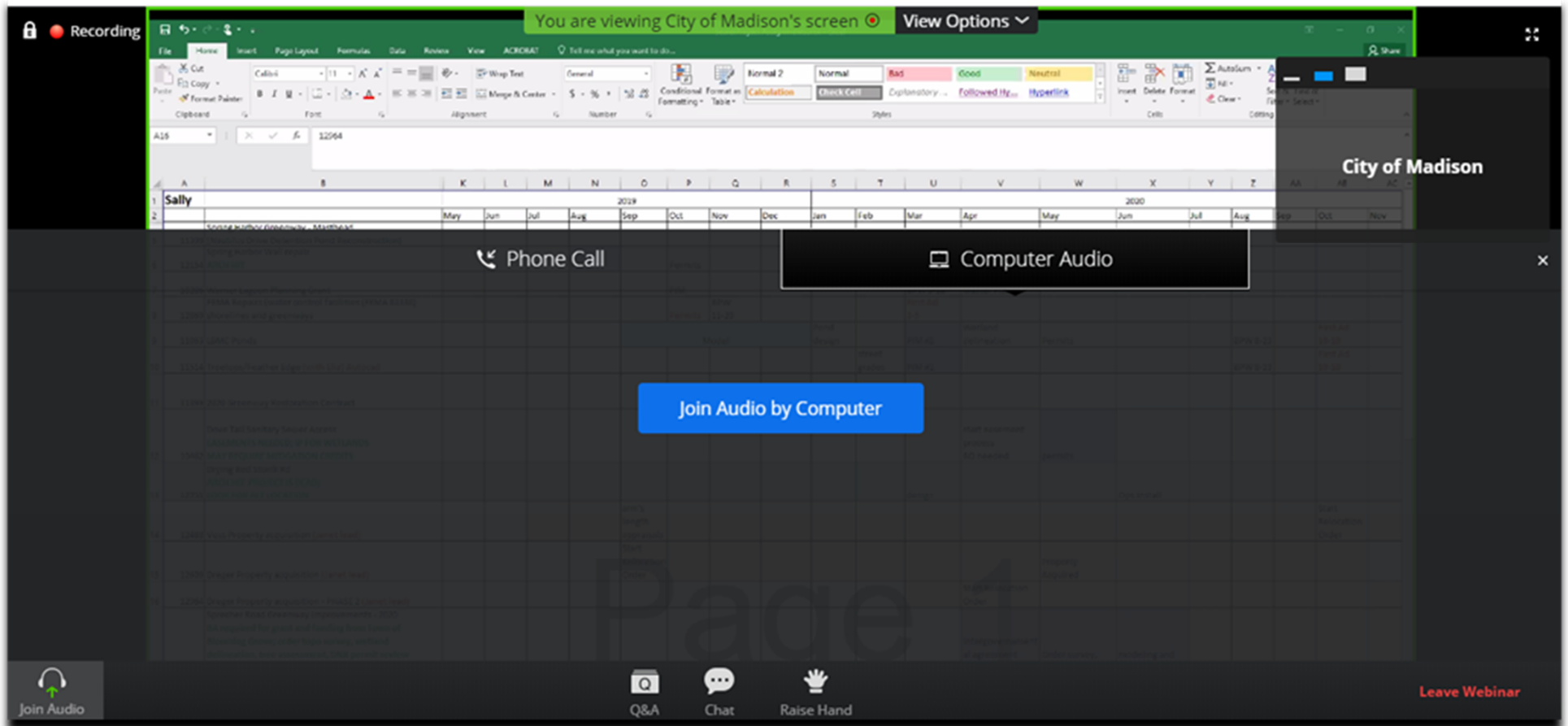


Make sure to join audio

CITY OF MADISON



How to Participate



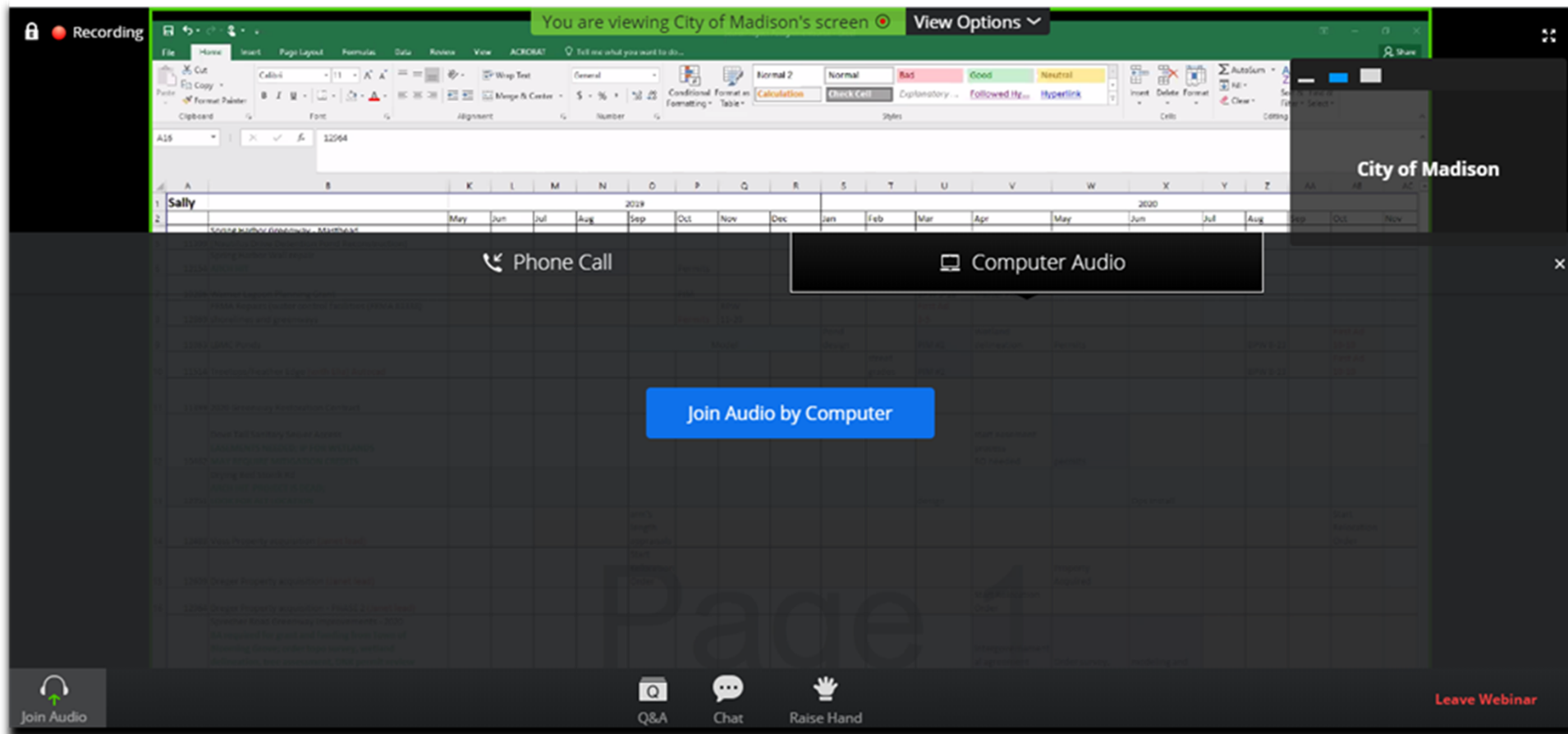
Raise your hand to be unmuted
For comments or ask additional questions.



CITY OF MADISON



How to Participate



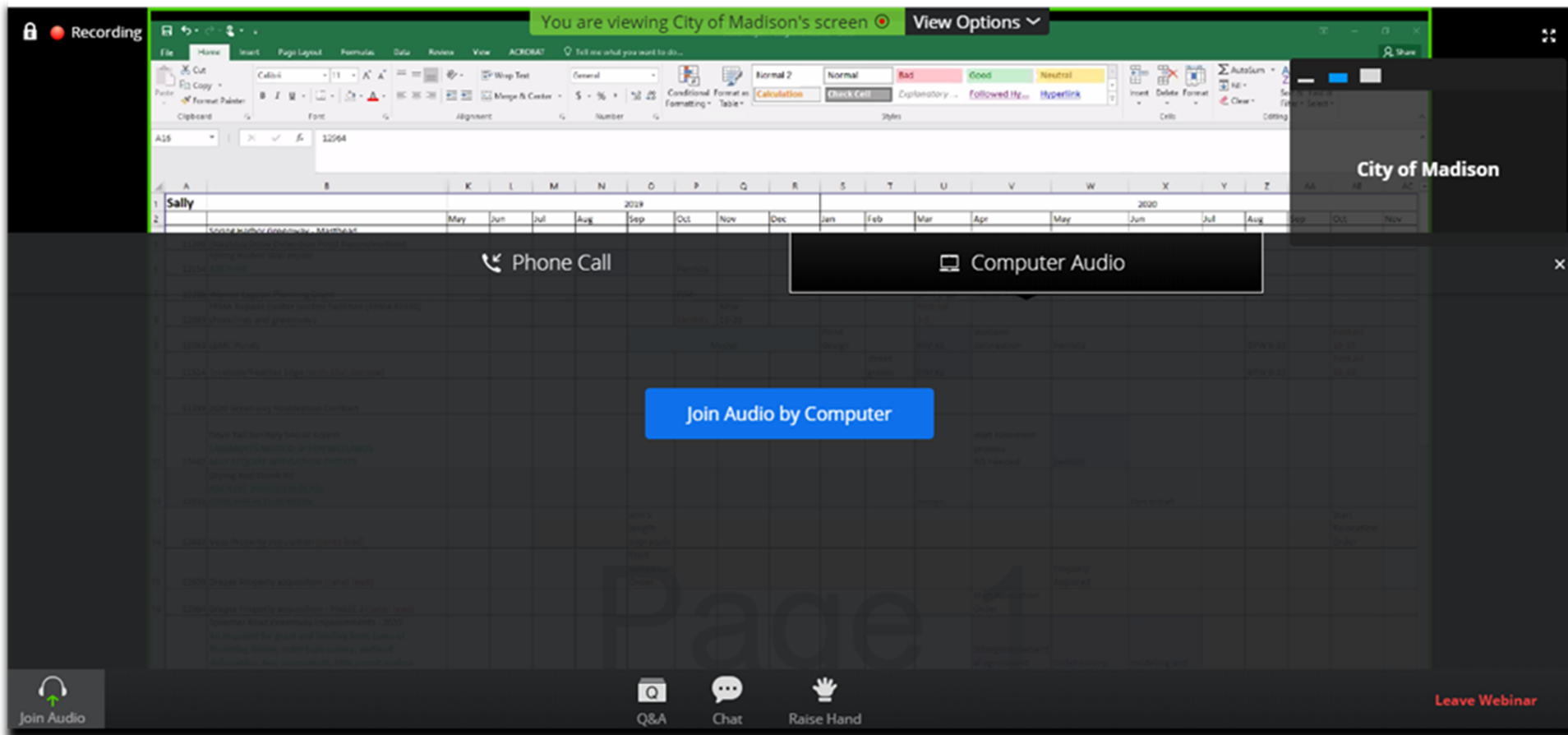
Use Q/A if you have questions.
We will answer after the presentation



CITY OF MADISON



How to Participate

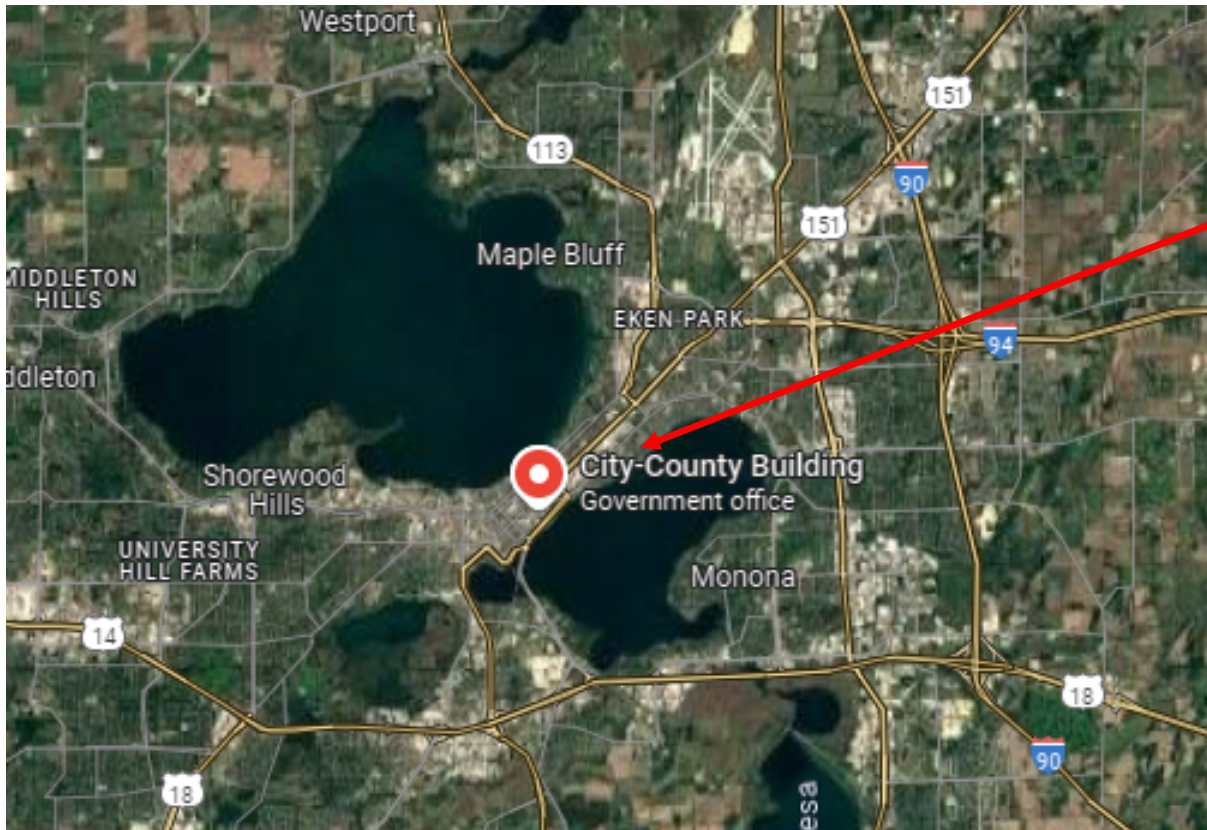


To leave the meeting
click here

CITY OF MADISON



Project Location

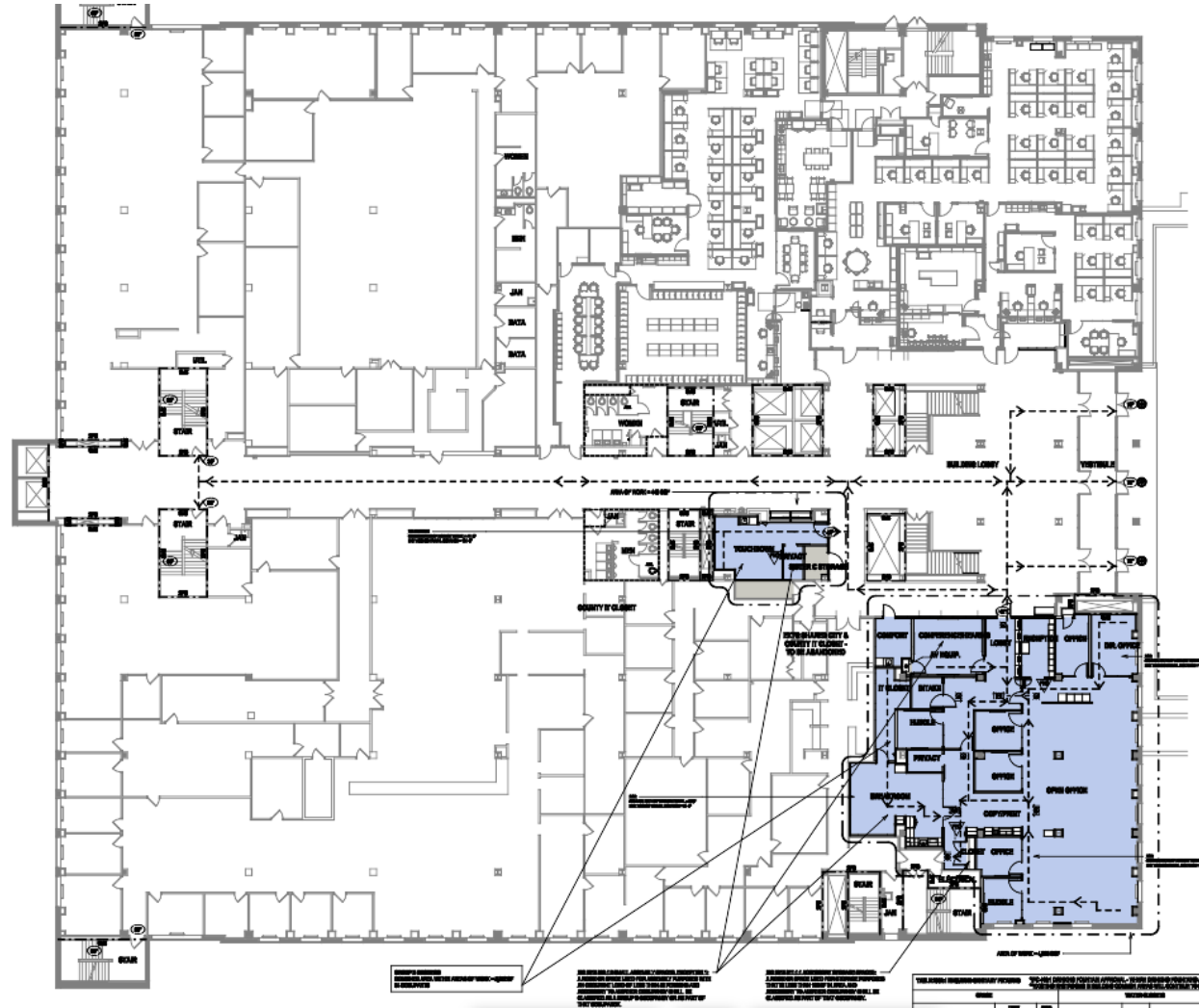


City County Building

CITY OF **MADISON**

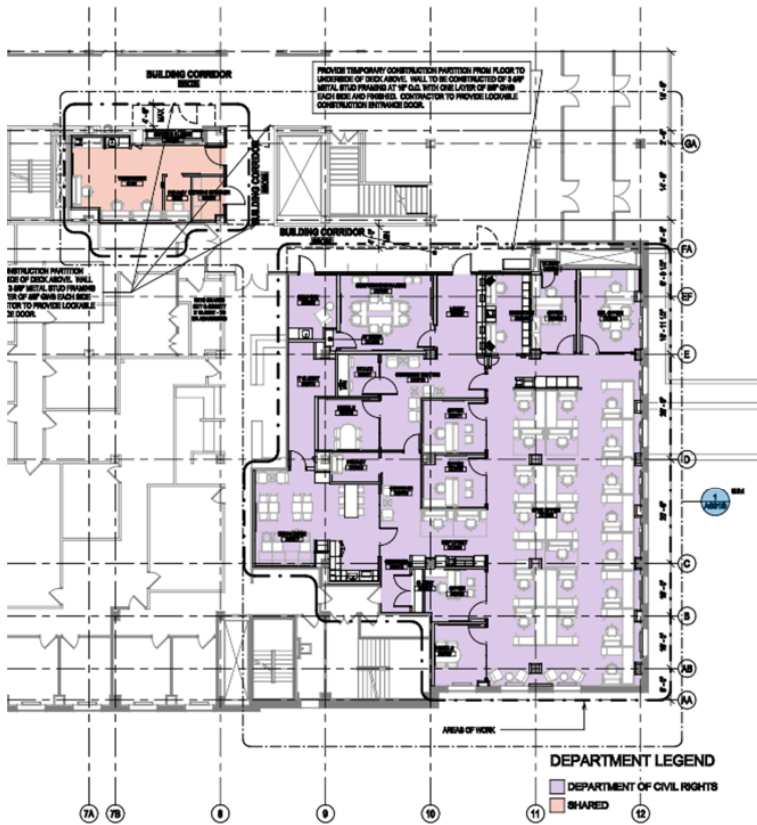


Project Location



CITY OF MADISON





- 41. INSTALL 1/2\"/>
- 42. REINSTALL BALANCED CABINET
- 43. REINSTALL EXISTING BALANCED COUNTER, CUT DOWN FROM EXISTING EXTERIOR CASE
- 44. REINSTALL EXISTING BALANCED SINK, PLUG, AND WATER FILLER
- 45. PATCH CAVITY AT EXISTING CASE WORK, MATCH EXISTING
- 46. PATCH SINK AT DOOR SILL LOCATION, MATCH EXISTING
- 47. LINE UP EXISTING SINK
- 48. PROVIDE 2x4P METAL STUD WITH 2x4P GYP-SUM WALL BOARD ABOVE AND BELOW THE DISPLAY CASE TO MAKE VOID SPACE
- 49. CUT GYP-SUM WALL BOARD AROUND EXISTING ELECTRICAL PANEL, PROVIDE PREPARED 1/2\"/>
- 50. FINISHLY FINISH-UP TOP TO 1/2\"/>
- 51. FINISHLY FINISH-UP SURFACE COUNTER AFTER FINISHING BOARD IS INSTALLED

DEPARTMENT LEGEND
 ■ DEPARTMENT OF CIVIL RIGHTS
 ■ SHARED

1 NEW WORK PLAN - LEVEL 01 - OVERVIEW - SOUTH
 Scale: 1/8" = 1'-0"
 0 1 2 3 4 5
 PLANNING TRANSPORTATION



CITY OF MADISON 

CITY OF MADISON 

CCB REMODEL - DCR 104 & 108A

EXHIBIT A

210 Martin Luther King Jr. Blvd.
Madison, WI 53703
11/21/2024



BID SET

continym
ARCHITECTS + PLANNERS

210101
CONTINUUM PROJECT NUMBER: 210101
CITY OF MADISON PROJECT #: 14614
BPW CONTRACT #: 6563

OWNER:
CITY OF MADISON
20 MARTIN LUTHER KING JR. BLVD.
MADISON, WI 53703
TEL: (608) 261-6676

ARCHITECT:
CONTINUUM ARCHITECTS + PLANNERS, S.C.
78 NORTH JEFFERSON STREET, SUITE 200
MADISON, WI 53703
TEL: (608) 261-6676

HVAC ENGINEER:
JDR ENGINEERING
808 HOBEL DRIVE, SUITE 100
MADISON, WI 53717
TEL: (608) 277-0788

PLUMBING + FIRE PROTECTION ENGINEER:
JDR ENGINEERING
808 HOBEL DRIVE, SUITE 100
MADISON, WI 53717
TEL: (608) 277-0788

ELECTRICAL ENGINEER:
JDR ENGINEERING
808 HOBEL DRIVE, SUITE 100
MADISON, WI 53717
TEL: (608) 277-0788

TECHNOLOGY/AUDIO VISUAL/SECURITY:
MEG
5001 TOWNHAWK WAY, SUITE 200
MADISON, WI 53718
TEL: (608) 238-6800



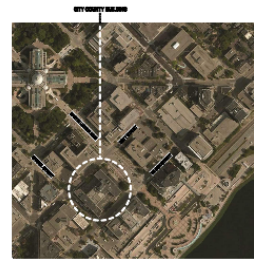
Planning Design Only

BIBLIOTHECA

Table with 2 columns: Item, Description

Table with 2 columns: Item, Description

Table with 2 columns: Item, Description



CAMPUS LOCATOR MAP

- Programming
- Campus + Master Planning
- Interior Design
- Sustainable Design
- Historic Preservation/ Renovation
- Project Management



CCB REMODEL - DCR 104 & 108A
DATE: 11/21/2024
SCALE: AS SHOWN
SHEET: TS0005

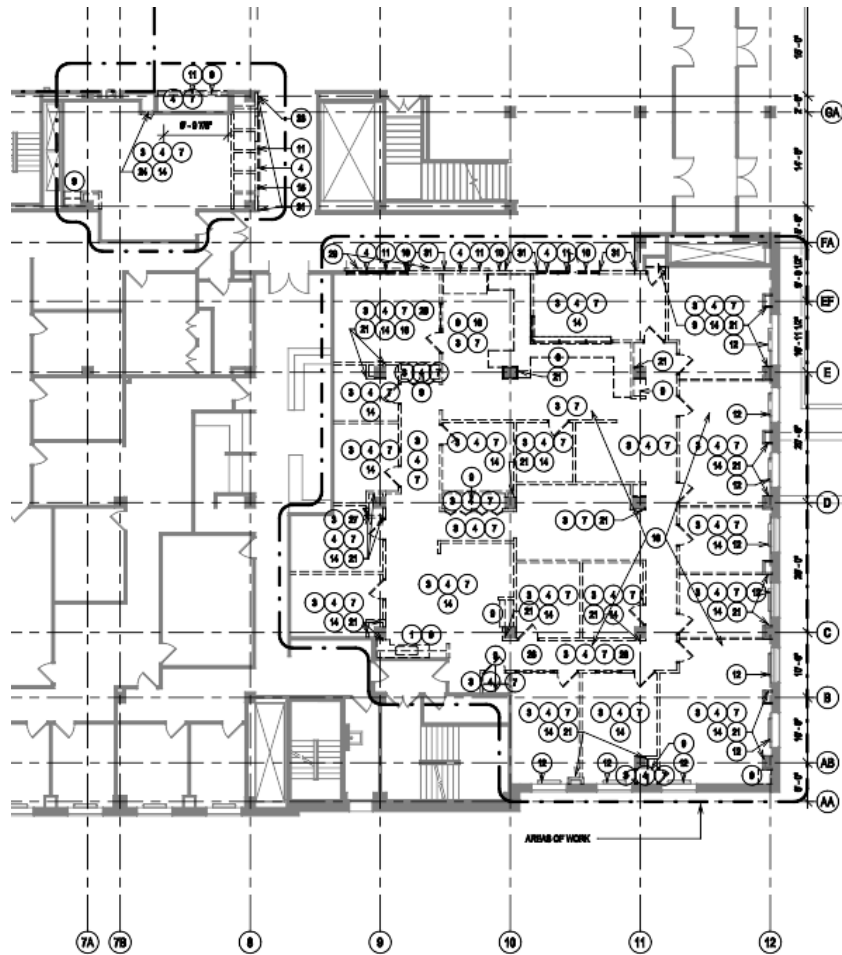
CITY OF MADISON



Scope of Work

- Interior Remodel:
 - CCB First Floor: Room 104 and 108A
 - CCB Second Floor: Room 203
 - CCM 5th Floor: Comfort Room
- . Demolition and construction.
- . Installation of finish materials.
- . Installation of electrical, lighting and heating equipment and materials.
- . Installation of built-in cabinetry.





- NOTE: FINISHES, MATERIALS, LAYOUTS, DIMENSIONS, INFORMATION ON SPECIAL FINISHES AND RELATED TO LEGAL REQUIREMENTS AND RELATED TO FINISHES AND DIMENSIONS THAT ARE USED IN ASSOCIATION WITH THESE NOTES.
- DEMOLITION PLAN KEY NOTES APPLY TO ALL DEMOLITION DRAWINGS AND MAY NOT BE USED ON EVERY SHEET.
- 1 REMOVE ALL EXISTING PLUMBING AND ACCESSORIES, INCLUDING TOILET PARTITIONS, DISPENSERS AND WASTE RECEPTACLES, AND RELATED SUPPORTS AND ANCHORS. REFER TO PLUMBING DRAWINGS FOR MORE INFORMATION.
 - 2A REMOVE EXISTING CEILING TILE, GIRD, HANGERS AND ALL CEILING ACCESSORIES IN AREA OF WORK. ALL METAL PAN CEILING AND SUPPORT FRAMING IS TO BE DEMOLISHED.
 - 2B WITHIN DASHED LINES, REMOVE EXISTING CEILING TILE, GRID, HANGERS, LIGHT FIXTURES, AND ALL CEILING ACCESSORIES AS NEEDED TO ACCOMMODATE NEW WORK. RETAIN FOR REINSTALLATION EXISTING PLASTER / GIBS BOFFTY BEYOND DASHED LINES TO REMAIN. THE METAL PAN CEILING AND SUPPORT FRAMING IS TO BE DEMOLISHED IN THIS AREA.
 - 2C EXISTING CEILING FAN(S) SYSTEM & LIGHTING TO REMAIN.
 - 3 REMOVE EXISTING CARPET, CERAMIC TILE, OTHER FLOOR FINISHES, AND ALL ASSOCIATED GELLES, ADHESIVES AND LEVELING COMPOUND DOWN TO CONCRETE SUBSTRATE IN ENTIRE ROOM.
 - 4 REMOVE EXISTING WALLS, DOORFRAMES, INTERIOR WINDOWFRAMES, HARDWARE, WALL-MOUNTED EQUIPMENT (HOOK STRIPS, WATERBOARDS, BULLETIN BOARDS, ETC), ADHESIVES, PARTITIONS, ANCHORS AND ACCESSORIES.
 - 5 REMOVE EXISTING BOFFTYCEILING AND ASSOCIATED FRAMING.
 - 6 REMOVE ALL EXISTING LIGHT FIXTURES AND ELECTRICAL. REFER TO ELECTRICAL DRAWINGS FOR MORE INFORMATION.
 - 7 REMOVE EXISTING IRAC. REFER TO MECHANICAL DRAWINGS FOR MORE INFORMATION.
 - 8 REMOVE EXISTING FIRE PROTECTION LINES AND SPRINKLER HEADS. REFER TO FIRE PROTECTION DRAWINGS FOR MORE INFORMATION.
 - 9 REMOVE EXISTING CABINETS, COUNTERTOP, SHELVE, COAT RACK, AND RELATED ANCHORS AND ADHESIVES.
 - 10 DEMOLISH WALL ABOVE STOREFRONT, INCLUDING STEEL CHANNELS INSIDE STOREFRONT FRAMING AND EXTENDING TO STRUCTURAL SLAB ANCHOR.
 - 11 EXISTING TERRAZZO FLOORING TO REMAIN. EXISTING STONE BAMB TO BE BALANCED, WHERE REMOVED, IN AREA OF WORK.
 - 12 REMOVE EXISTING INSULATOR COVERING, BALANCE FOR CLEANING, REPAIRING, AND INSTALLATION.
 - 13 REMOVE ALL EXISTING WINDOW BLINDS, BLINDS, STORE WINDOW FINISHES AND ALL ASSOCIATED ANCHORS AND ADHESIVES. EXISTING WINDOW AND STONE WALL TO REMAIN.
 - 14 REMOVE EXISTING WOOD CHAIR RAIL AND WALL BANE WHERE EXISTING WALL IS TO REMAIN. PATCH TO RECEIVE NEW FINISHES.
 - 15 REMOVE EXISTING DISPLAY CABINET, HANGERS, ADHESIVES, PARTITIONS AND ACCESSORIES. RETAIN GLASS DOOR DISPLAY CABINET FOR REUSE BY CLIENT.
 - 16 FLOOR SLAB TOPPING TO BE CUT TO ACCOMMODATE ELECTRICAL RACKWAY. COORDINATE EXTENT / DETAIL OF CUTTING WITH ELECTRICAL DOCUMENTS.
 - 17 PROVIDE SUPPORT OF EXISTING CORRIDOR PLASTER / GIBS BOFFTY TO STRUCTURE ABOVE WHEN EXISTING STOREFRONT, STONE AND PARTITIONS ARE REMOVED.
 - 18 AT EXISTING PARTITIONS TO REMAIN IN THE AREA NEAR THE STAIR EXT, LEAVE EXISTING METAL BAMB IN PLACE TO RECEIVE NEW FINISHES.
 - 19 REMOVE EXISTING FIRE HOSE CABINET. PATCH WALL TO RECEIVE NEW FINISHES.
 - 20 EXISTING PLASTER / GIBS BOFFTY BOUNDED BY DOTTED LINE TO BE REMOVED TO ACCOMMODATE NEW WORK.
 - 21 REMOVE ALL PARTITIONS / PLUMBING ANCHORS EXISTING COLLAN OR PIPE CHANGES.
 - 22 REMOVE EXISTING DOORFRAME, HARDWARE, AND ACCESSORIES, TURN OVER TO OWNER FOR REUSE AT IT CLOSET.
 - 23 DEMOLISH EXISTING 18" X 18" ACCESS PANEL. TURN OVER TO OWNER.
 - 24 REMOVE EXISTING BULLHEAD AND ALL ASSOCIATED FRAMING.
 - 25 REMOVE EXISTING BORNOWN LIGHT.
 - 26 DEMOLISH EXISTING 18" X 18" ACCESS PANEL, TURN OVER TO OWNER.
 - 27 REMOVE, BALANCE AND STORE EXISTING COUNTER, SINK, FAUCET AND WATER FILLER TO BE ALTERED AND REINSTALLED.
 - 28 REMOVE, BALANCE AND TURN OVER EXISTING BULLETIN BOARD.
 - 29 EXISTING CARPET TO REMAIN, PROTECT DURING DEMOLITION. PATCHING REQUIRED AT EXISTING CABINETS REMOVAL, MATCH EXISTING CARPET.
 - 30 DEMOLISH EXISTING WALL ASSEMBLY, EXISTING STONE AND STONE BAMB TO BE LABELED AND BALANCED FOR REUSE.
 - 31 DEMOLISH EXISTING WALL ASSEMBLY TO BE COORDINATED WITH ELECTRICAL CONTRACTOR.

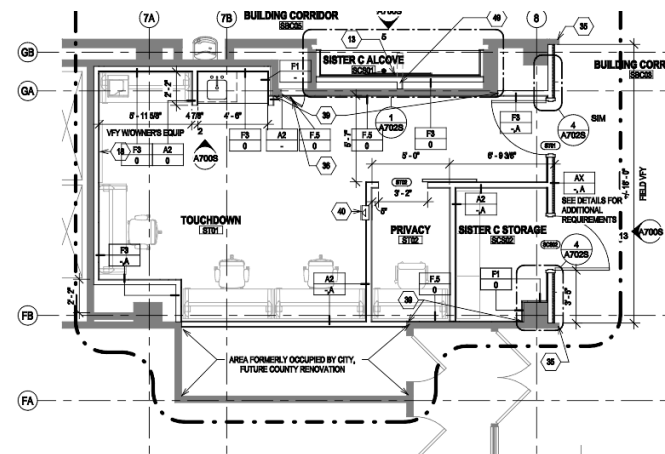
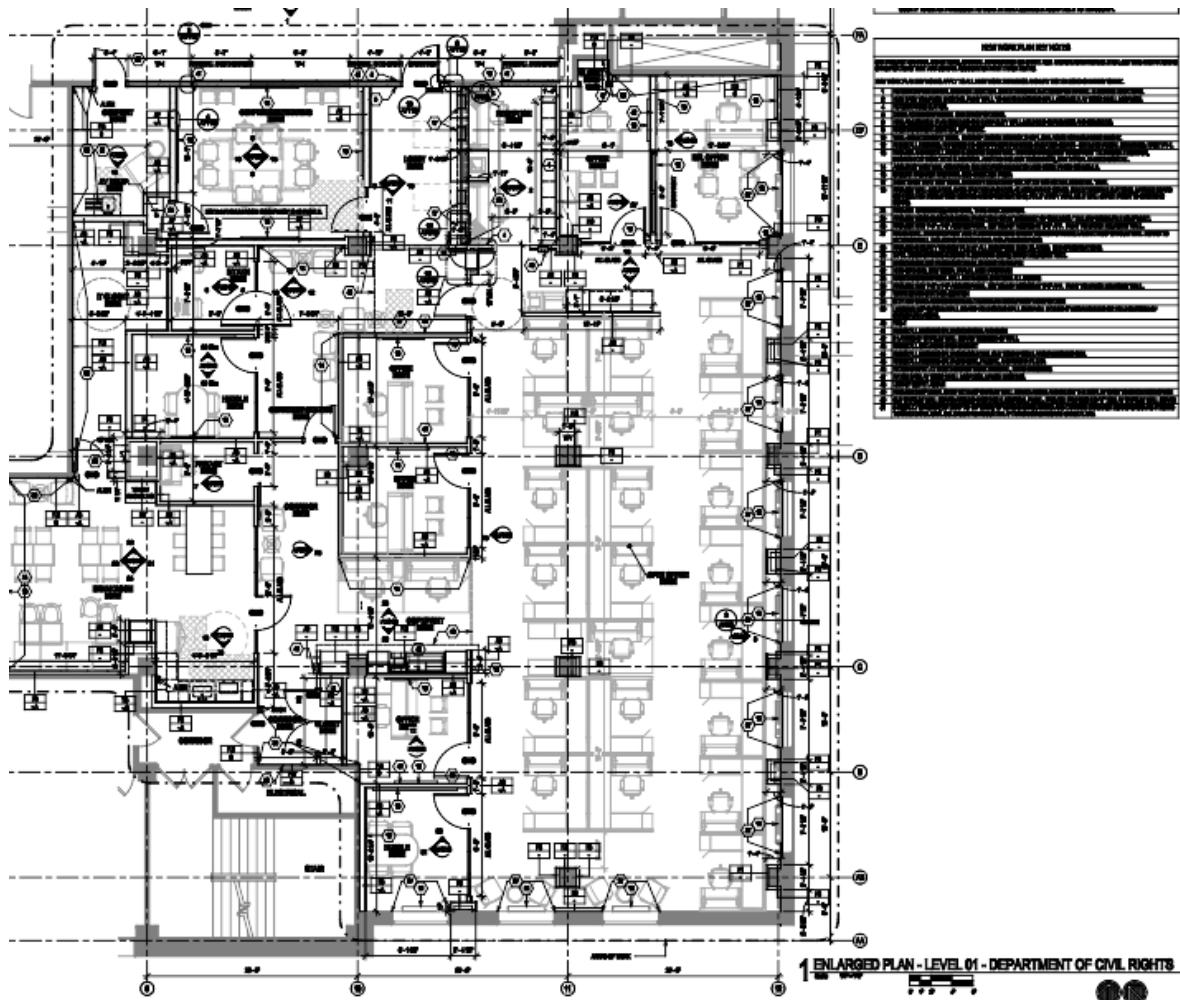
1 DEMOLITION PLAN - LEVEL 01 - OVERVIEW - SOUTH

Date: 5/27/19



CITY OF MADISON





CITY OF MADISON



Project Schedule

PROJECT NAME:	CCB REMODEL - DCR 104 & 108A
CONTRACT NO.:	9583
SBE GOAL	15%
BID BOND	5%
SBE PRE BID MEETING (10:00 A.M.)	1/9/25
PREQUALIFICATION APPLICATION DUE (2:00 P.M.)	1/9/25
BID SUBMISSION (2:00 P.M.)	1/16/25
BID OPEN (2:30 P.M.)	1/16/25



Bidding Process

- Access Bid Documents through Bid Express
- Review all Bid Documents
- Send questions via email to Project Architect & the City Project Managers
- If applicable register for Local Vendor Preference, submit Pre-Qualification, & Affirmative Action (AA) Plan
- Submit required Sections A - I
- Selection based on base bid as it compares to the Construction Budget Dollar Value



Prequalification Application & AA Plan

- If bidding contractor is not prequalified OR does not have an approved AA Plan with the City, they must be submitted by Thursday, 1/9/25.
 - Must be approved by bid due date (1/16/25).
- Prequals are good for 2 years and expire on March 1st of the given 2-year cycle.
- AA plans are good for 2 years.
- See “How to Get Prequalified” on Engineering website:
<https://www.cityofmadison.com/engineering/developers-contractors/contractors/how-to-get-prequalified>



Bidding Information

- SBE Goal is 15%
- Contact DCR with questions about SBE Program
- Engineering Estimate = \$2,600,000



Resources

- Project Website: <https://www.cityofmadison.com/engineering/projects/ccb-remodel-dcr-104-108a>
 - Sign-up for project email updates on the website
 - Updates on work progress will be posted to the project website
 - Recording for this meeting will be posted on project webpage
- Facebook – City of Madison Engineering
- Twitter – @MadisonEngr
- Engineering Podcast: Everyday Engineering on iTunes, GooglePlay

