

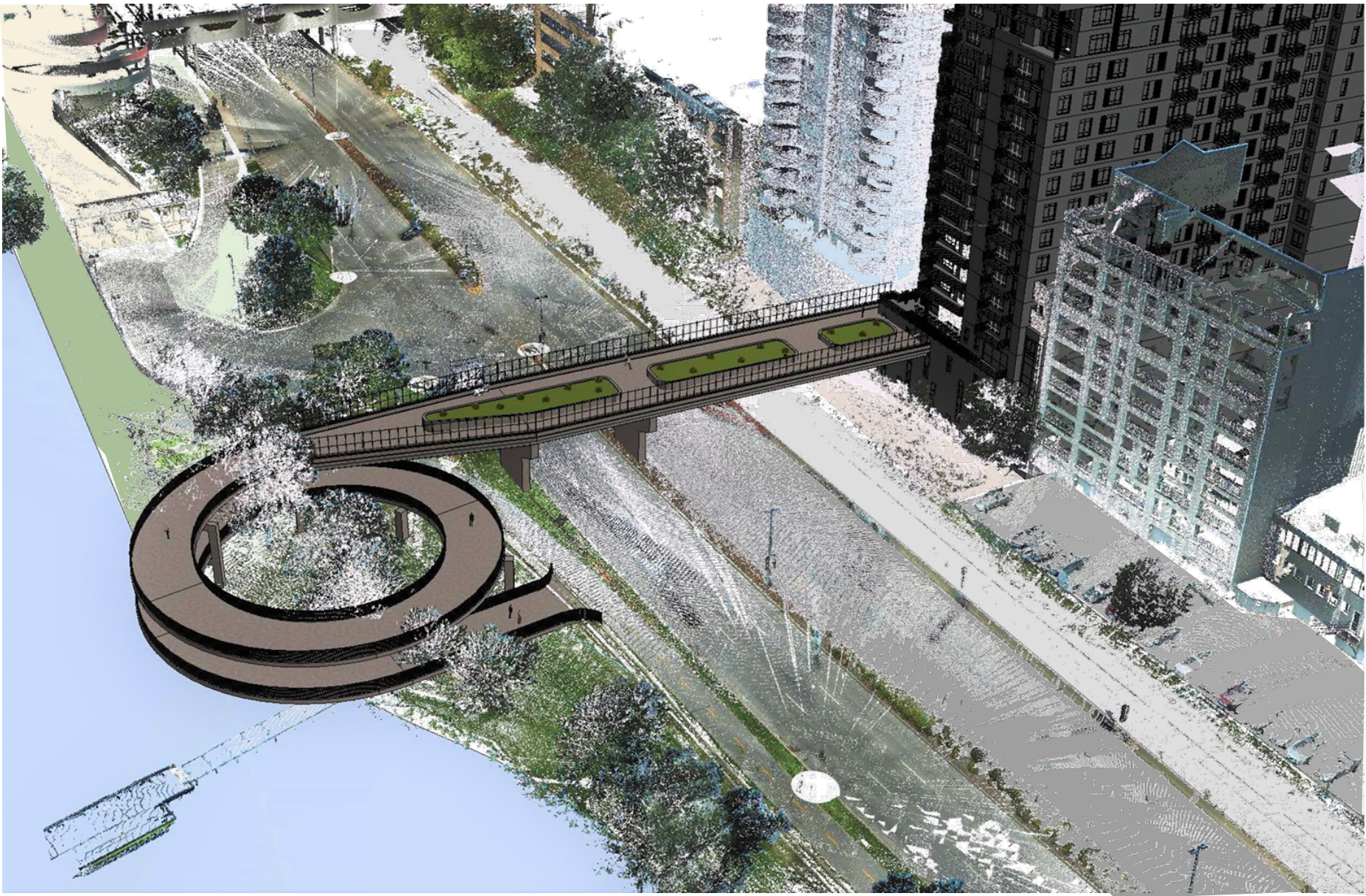
Pedestrian Bicycle Connection to Law Park



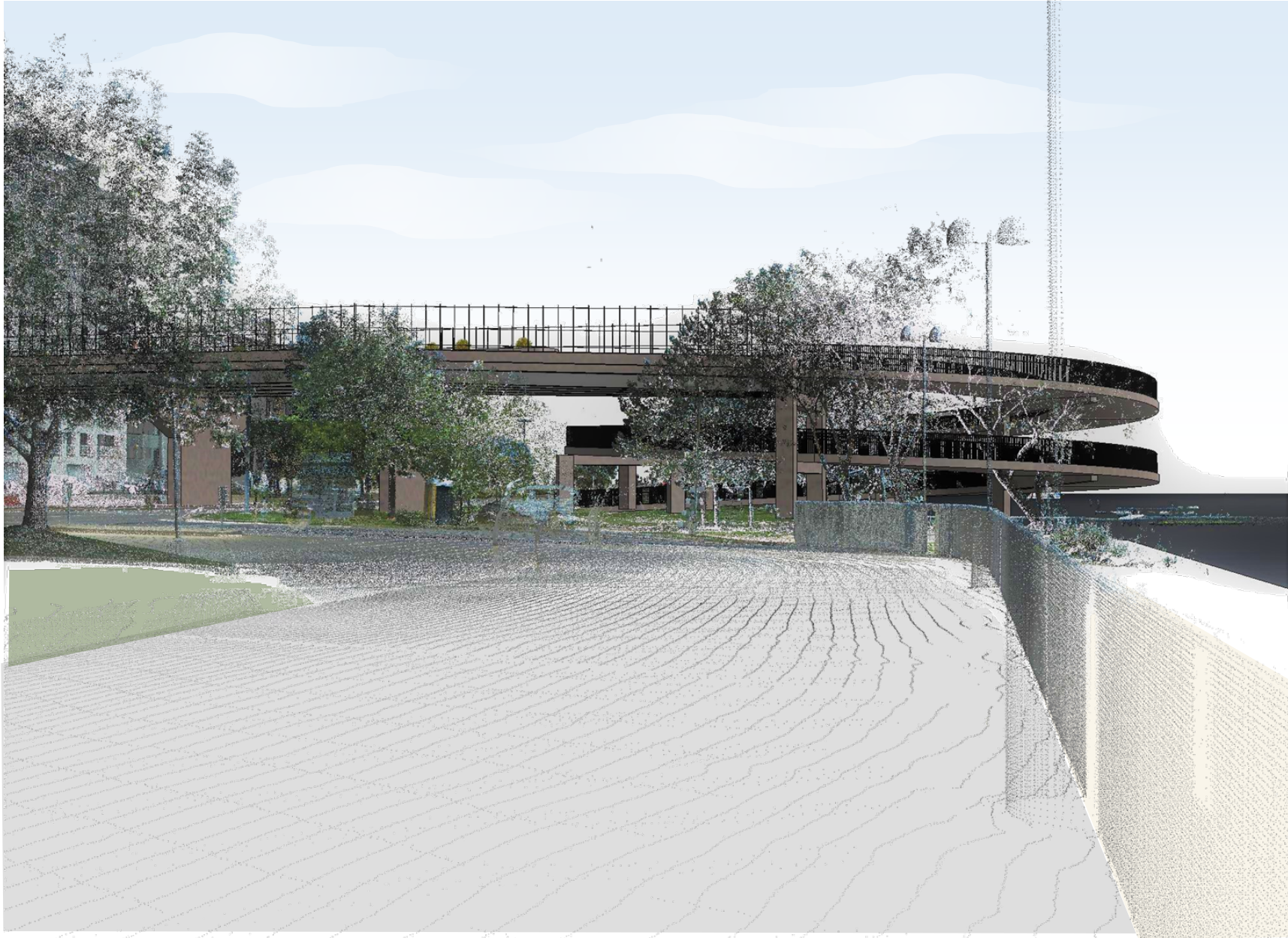
Stronger connections from the square to the lake are recommended in the South Capitol Transit Oriented Development study. With the potential redevelopment of 149 and 151 East Wilson, a pedestrian overpass could be constructed that links Wilson Street to Law Park. The City is currently making arrangements with the developer to preserve an easement allowing this overpass and exploring putting in the subsurface infrastructure needed for the overpass. Construction of the overpass will occur when funding becomes available.

Point Cloud Rendering

The City had portions of the John Nolen Corridor laser scanned. Laser scanning creates a series of points, arranged in a 3-dimensional model, that accurately represent the location of buildings, signs, pavements, trees, and other features. The renderings below illustrate a possible pedestrian and bicycle overpass superimposed on the point cloud developed by the laser scanning. The pedestrian bicycle overpass maintains appropriate clearances over the railroad, and seeks to minimize effects to the lake.



Aerial view of potential pedestrian bicycle overpass



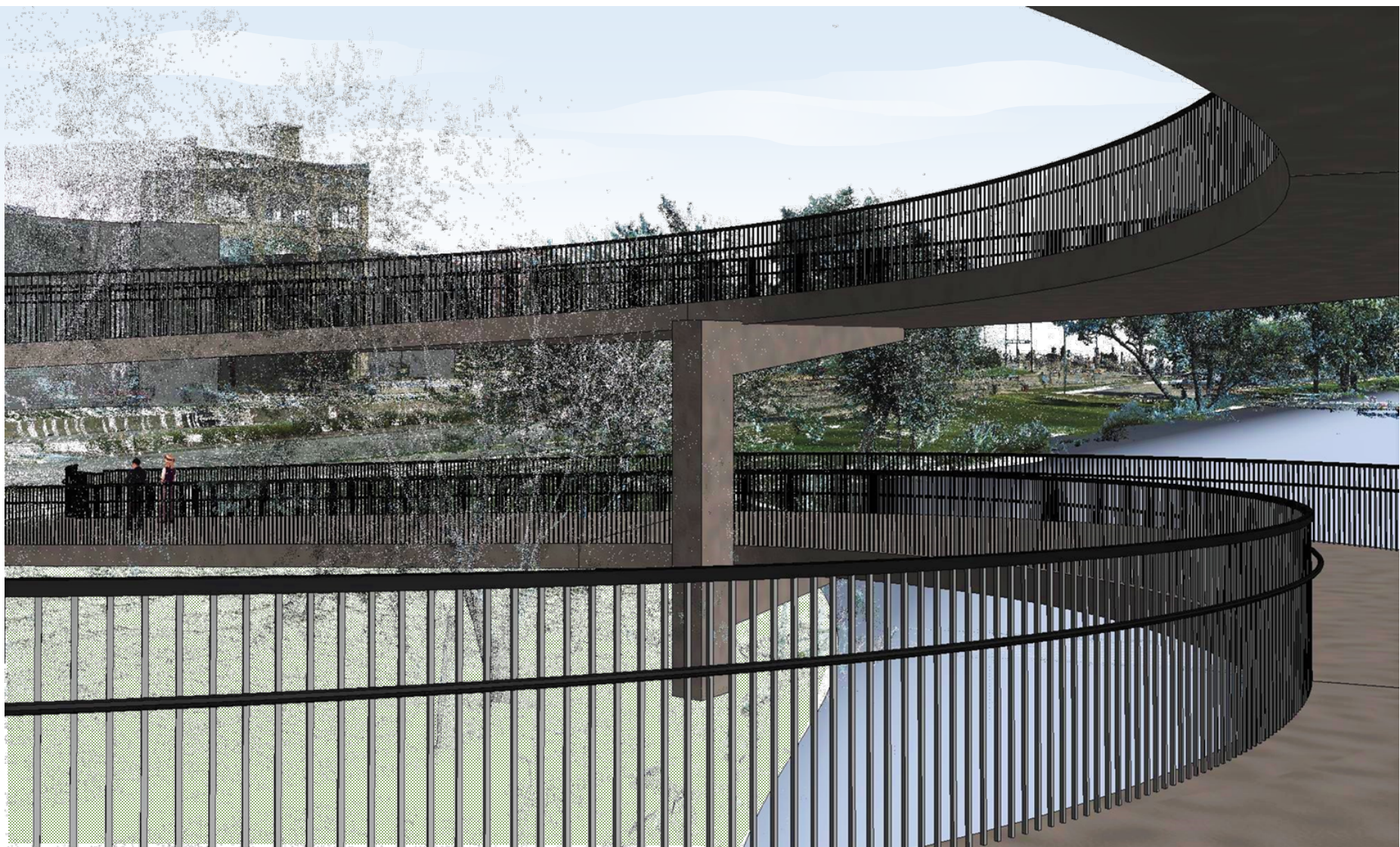
Looking at pedestrian bicycle overpass from Monona Terrace



Pedestrian bicycle overpass viewed from the east



Pedestrian bicycle overpass could be made wider to accommodate planters, food carts, or other amenities.



The pier supporting the pedestrian bicycle overpass ramp can be cantilevered, yet some of the structure would still extend over the lake..



Discussion of Concepts East of Monona Terrace

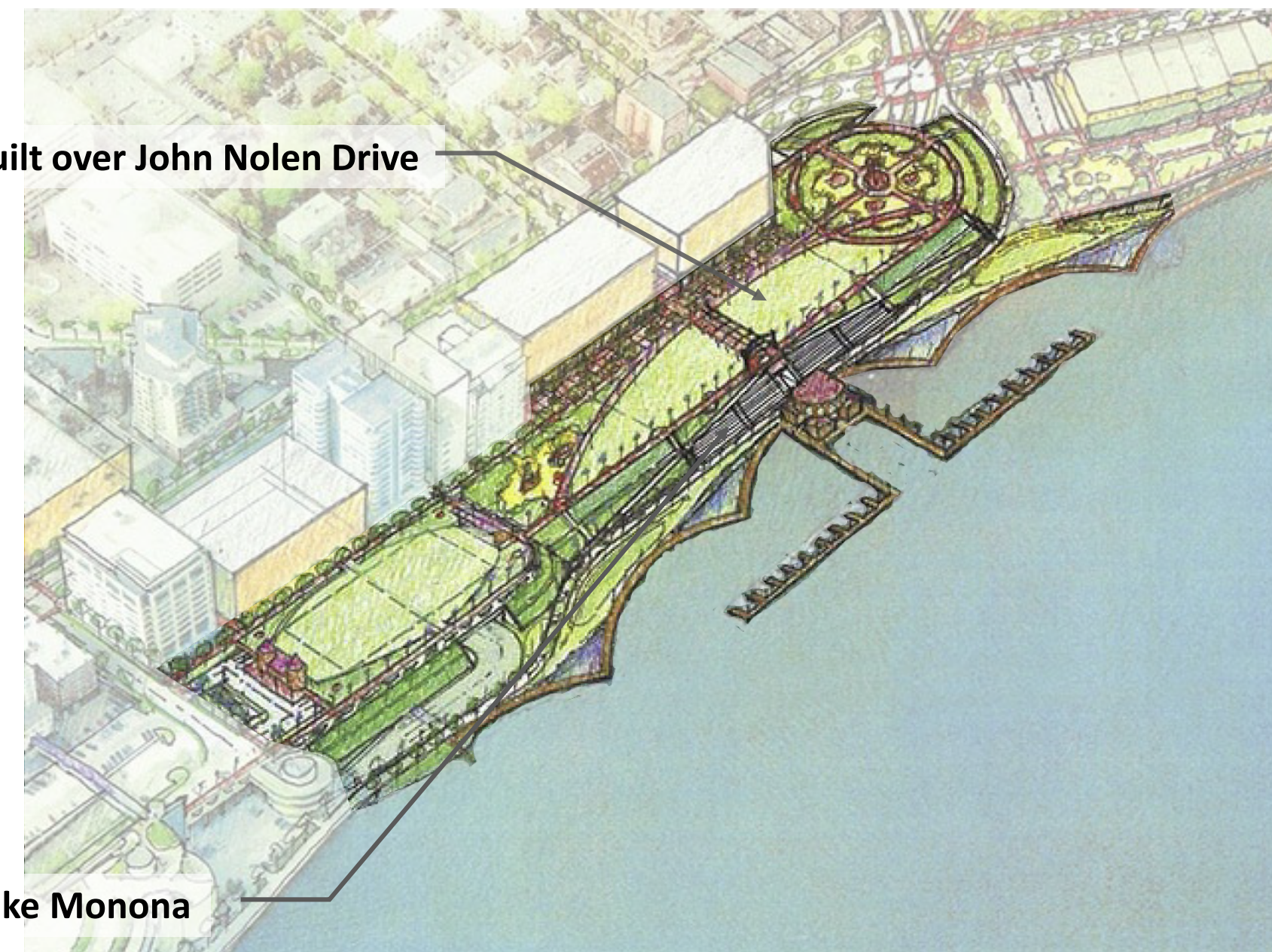
Kenton Peters Concept

Looking Northwest

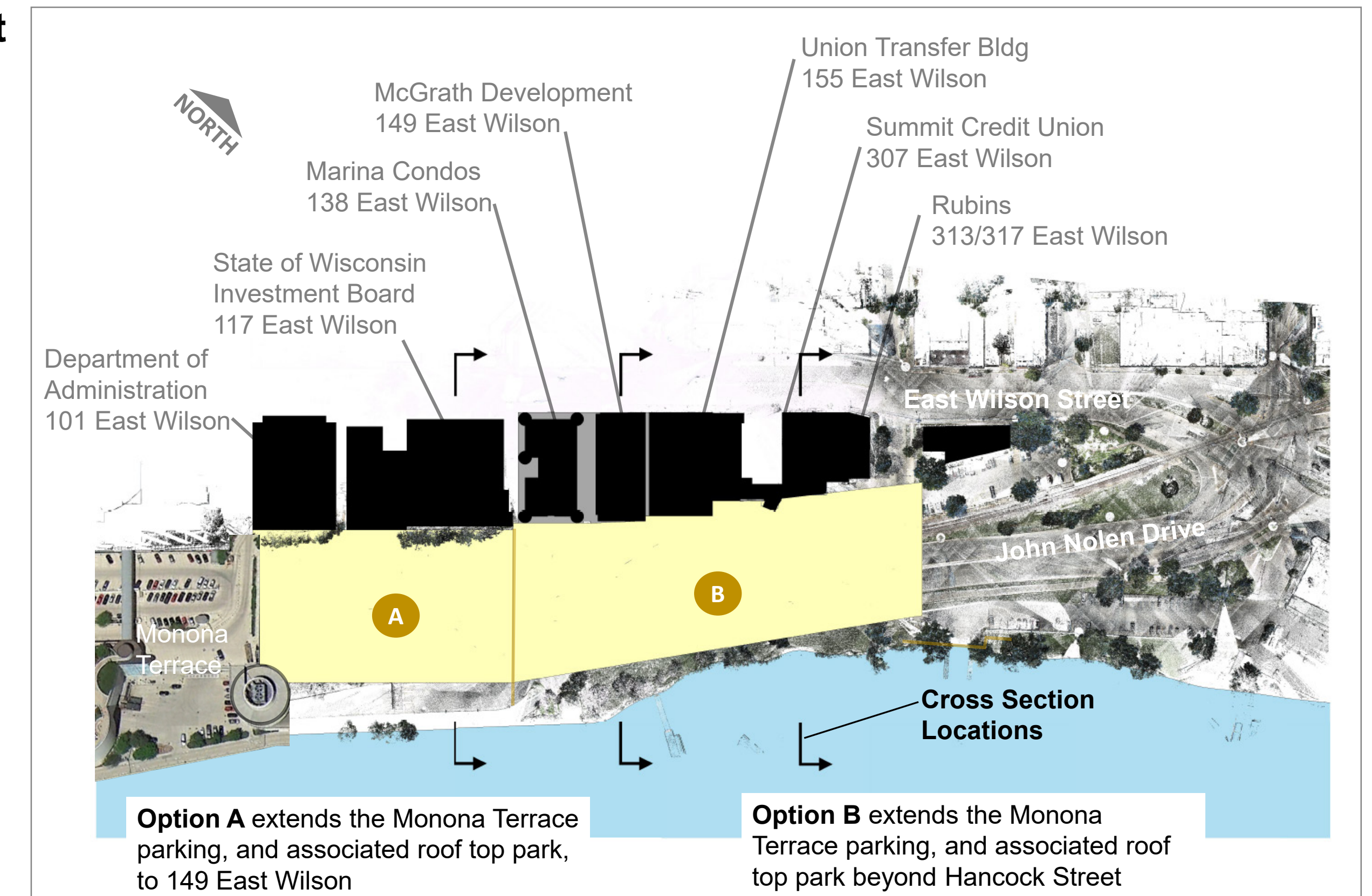


Madison Design Professionals Workgroup Concept

Looking Northeast

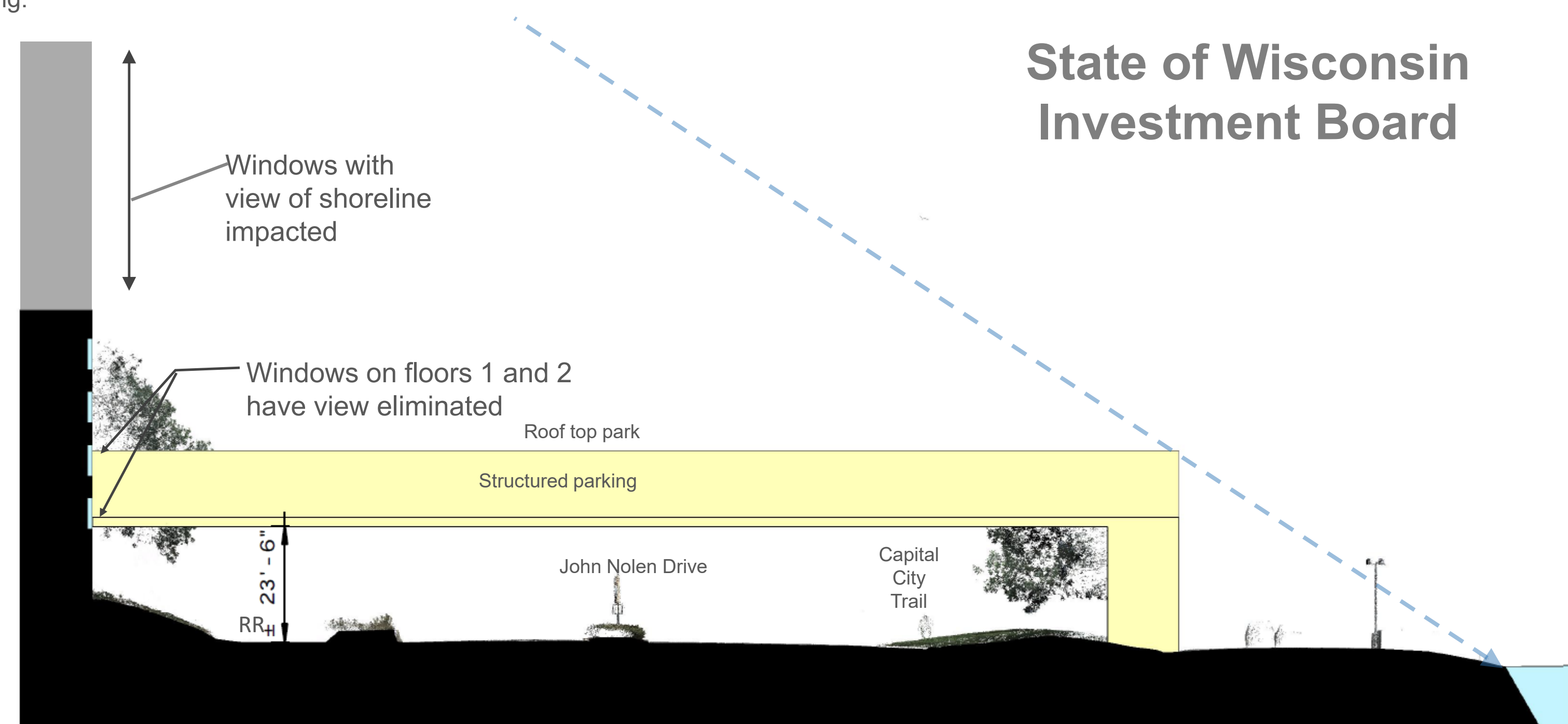


Both Kenton Peters and Madison Design Professionals Workgroup have developed concepts that would extend the Monona Terrace parking eastward over John Nolen Drive to the Blair Street intersection. While differing in details, both concepts incorporate a roof deck park on the top level, structured parking below the park, and a stepped terrace down to the lake.

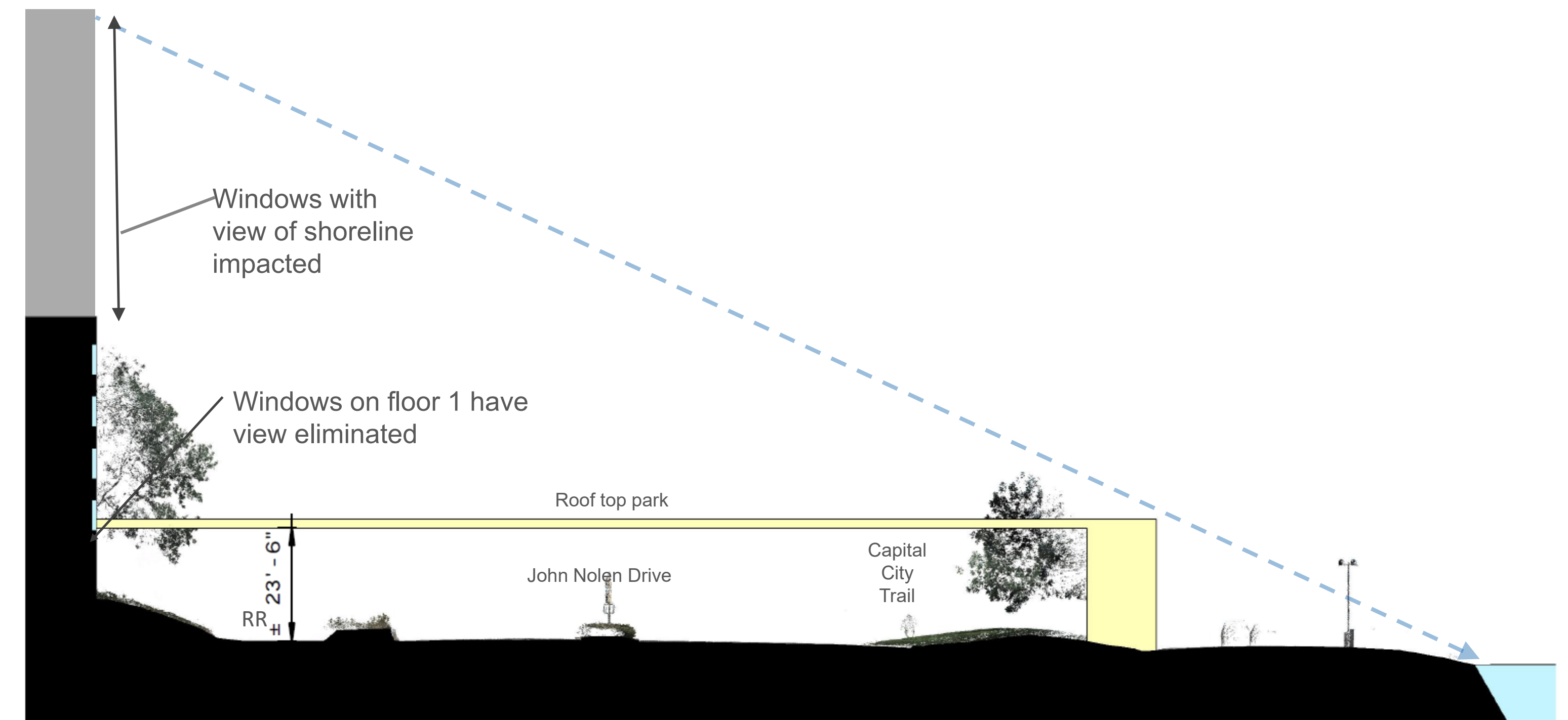


Cross Sections and View Shed Analysis with Point Cloud

The City had portions of the John Nolen Corridor laser scanned. Laser scanning creates a series of points, arranged in a 3-dimensional model, that accurately represents the exact locations of buildings, signs, pavements, trees, and other features. The study team used this point cloud to investigate how an extended parking structure/park would affect the view from existing and proposed buildings. To perform this analysis, a trapezoid was superimposed above John Nolen Drive east of Monona Terrace. One of the scenarios used a trapezoid that assumed no structured parking and only a rooftop garden. Another scenario used a trapezoid that had one level of structured parking.



117 East Wilson
With Structured Parking



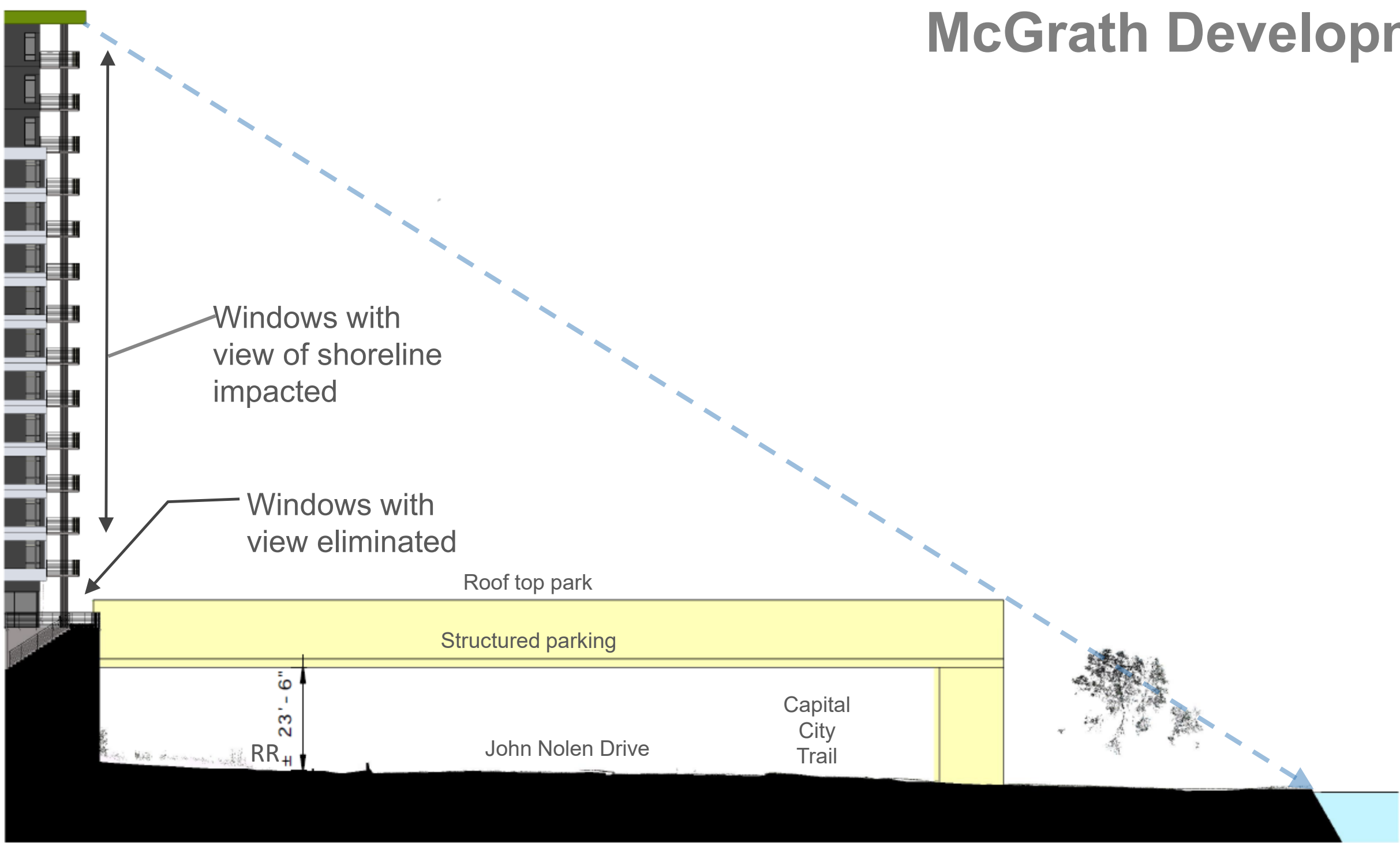
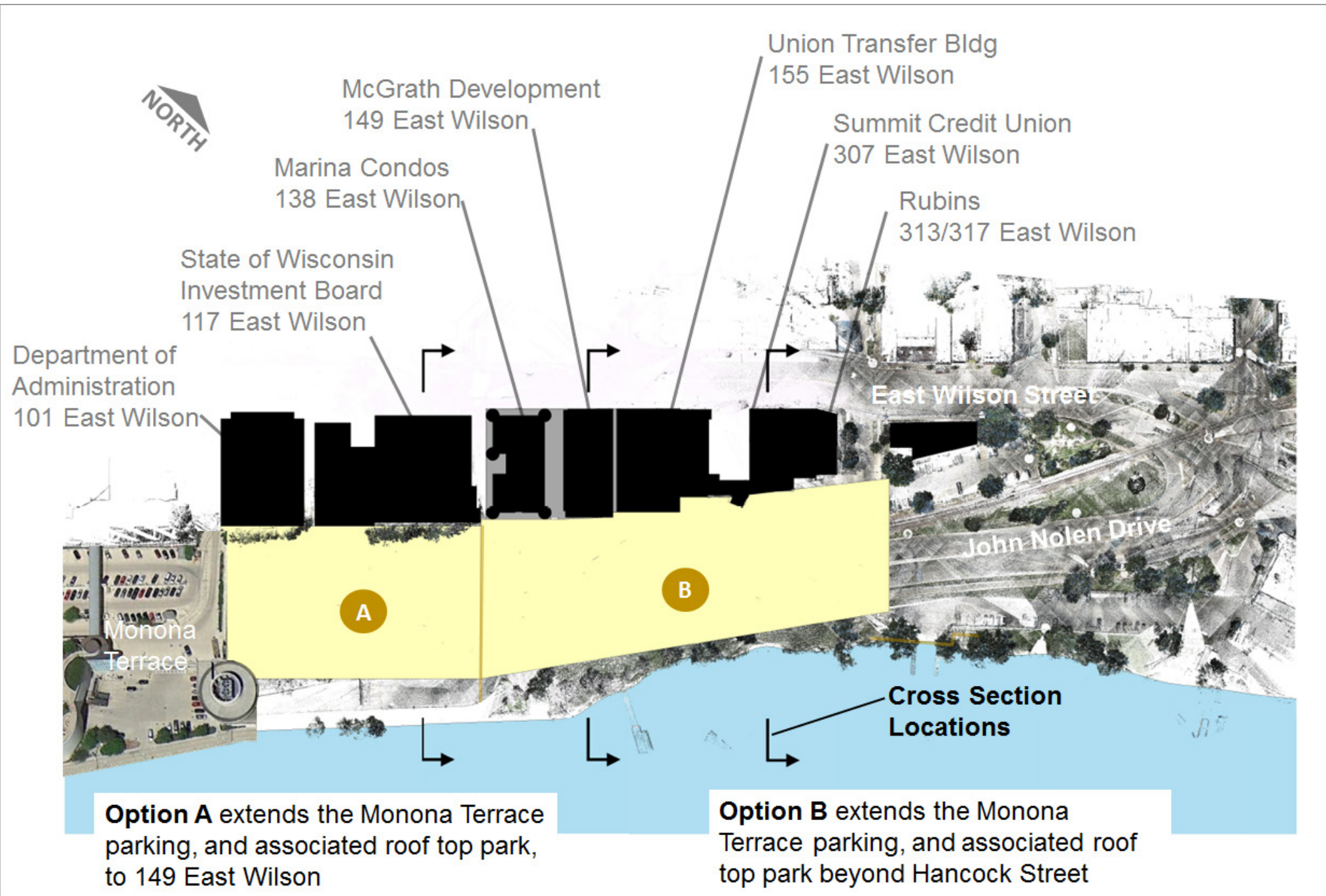
117 East Wilson
No Structured Parking



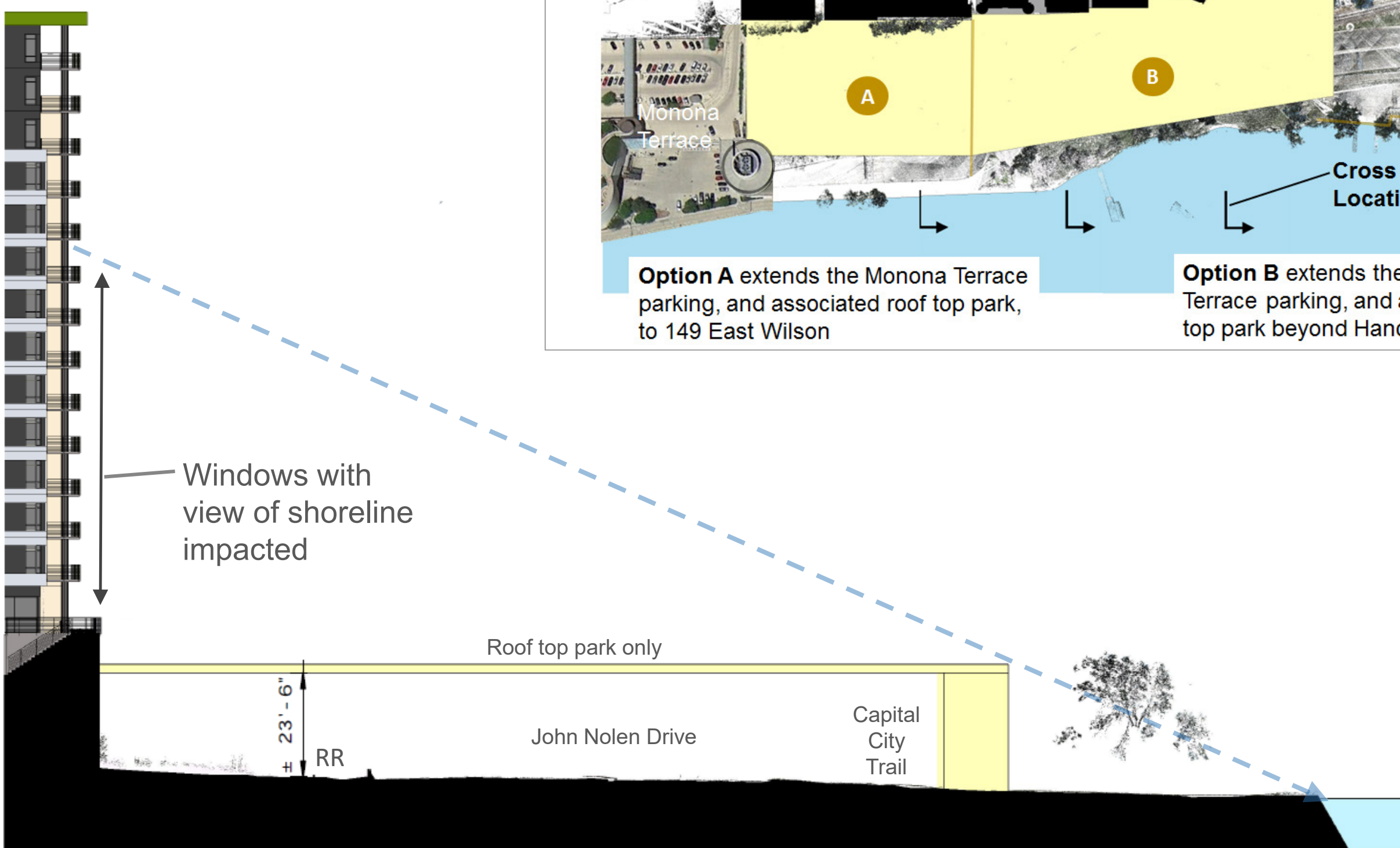
Discussion of Concepts East of Monona Terrace

Cross Sections and View Shed Analysis with Point Cloud

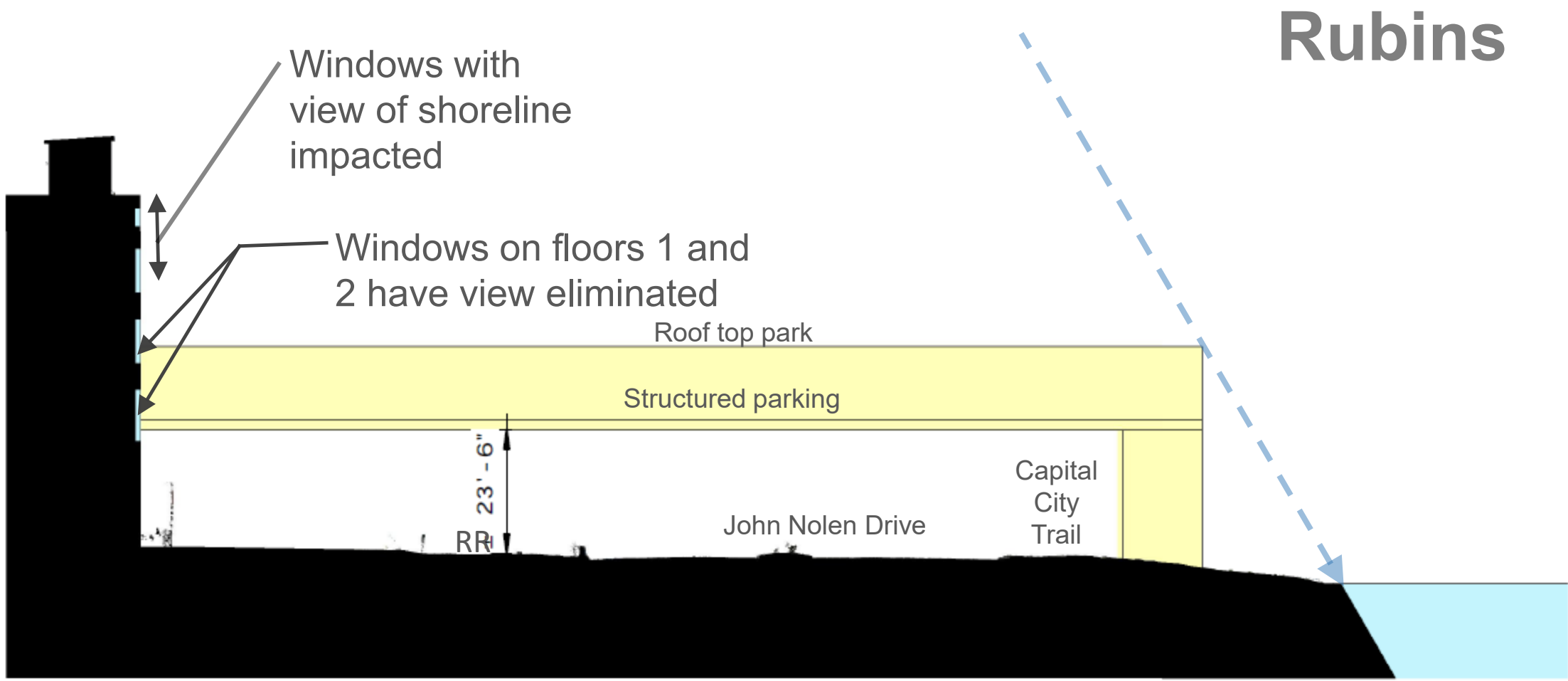
The City had portions of the John Nolen Corridor laser scanned. Laser scanning creates a series of points, arranged in a 3-dimensional model, that accurately represents the exact locations of buildings, signs, pavements, trees, and other features. The study team used this point cloud to investigate how an extended parking structure/park would affect the view from existing and proposed buildings. To perform this analysis, a trapezoid was superimposed above John Nolen Drive east of Monona Terrace. One of the scenarios used a block that assumed no structured parking and only a rooftop park. Another scenario used a block that had one level of structured parking.



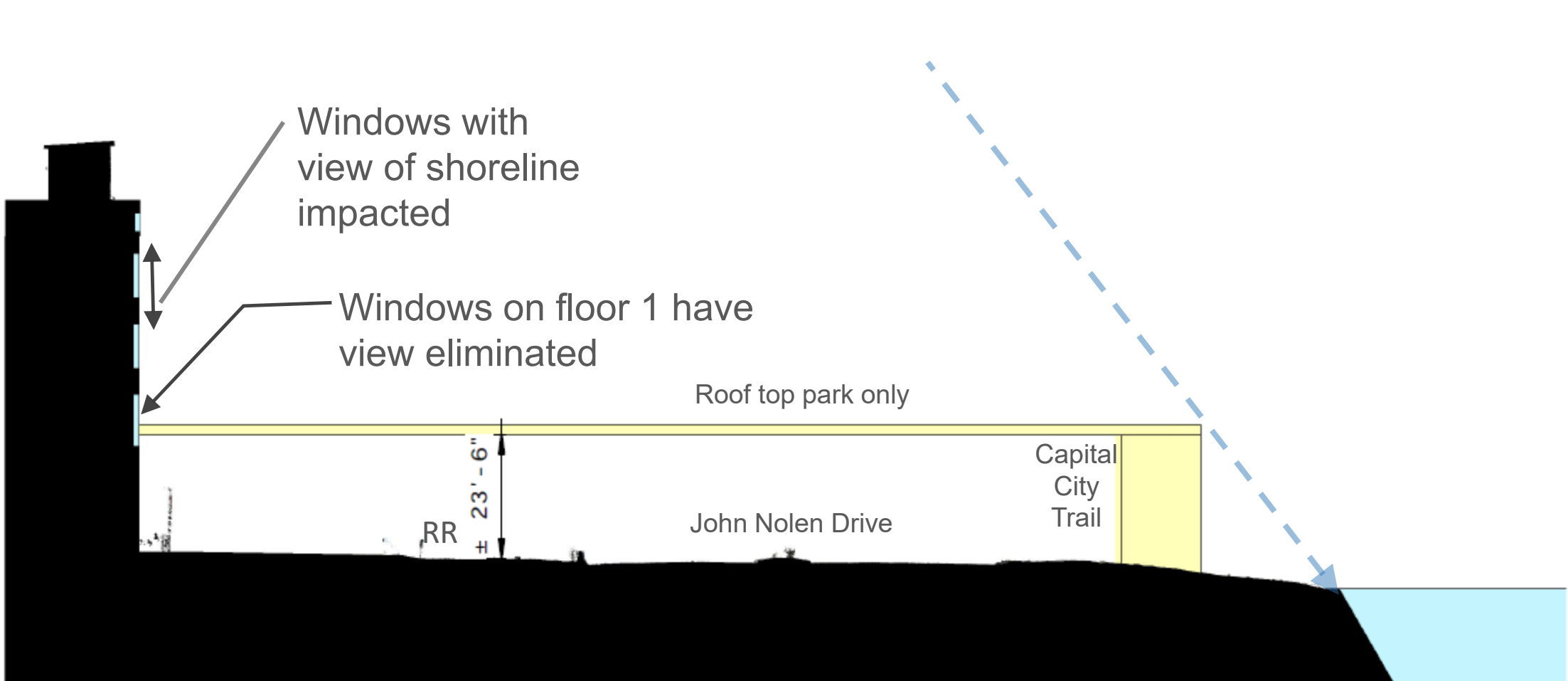
149 East Wilson
With Structured Parking



149 East Wilson
No Structured Parking



313 East Wilson
With Structured Parking



313 East Wilson
No Structured Parking

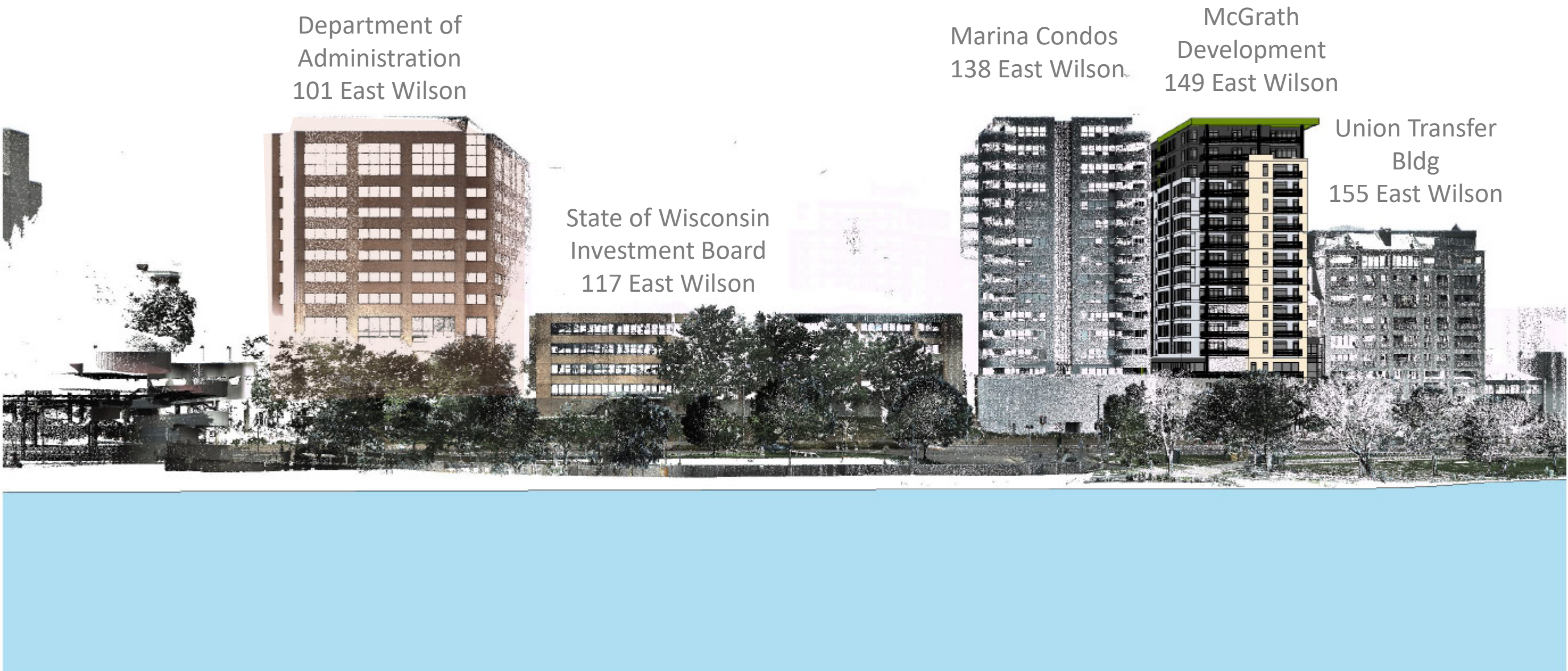
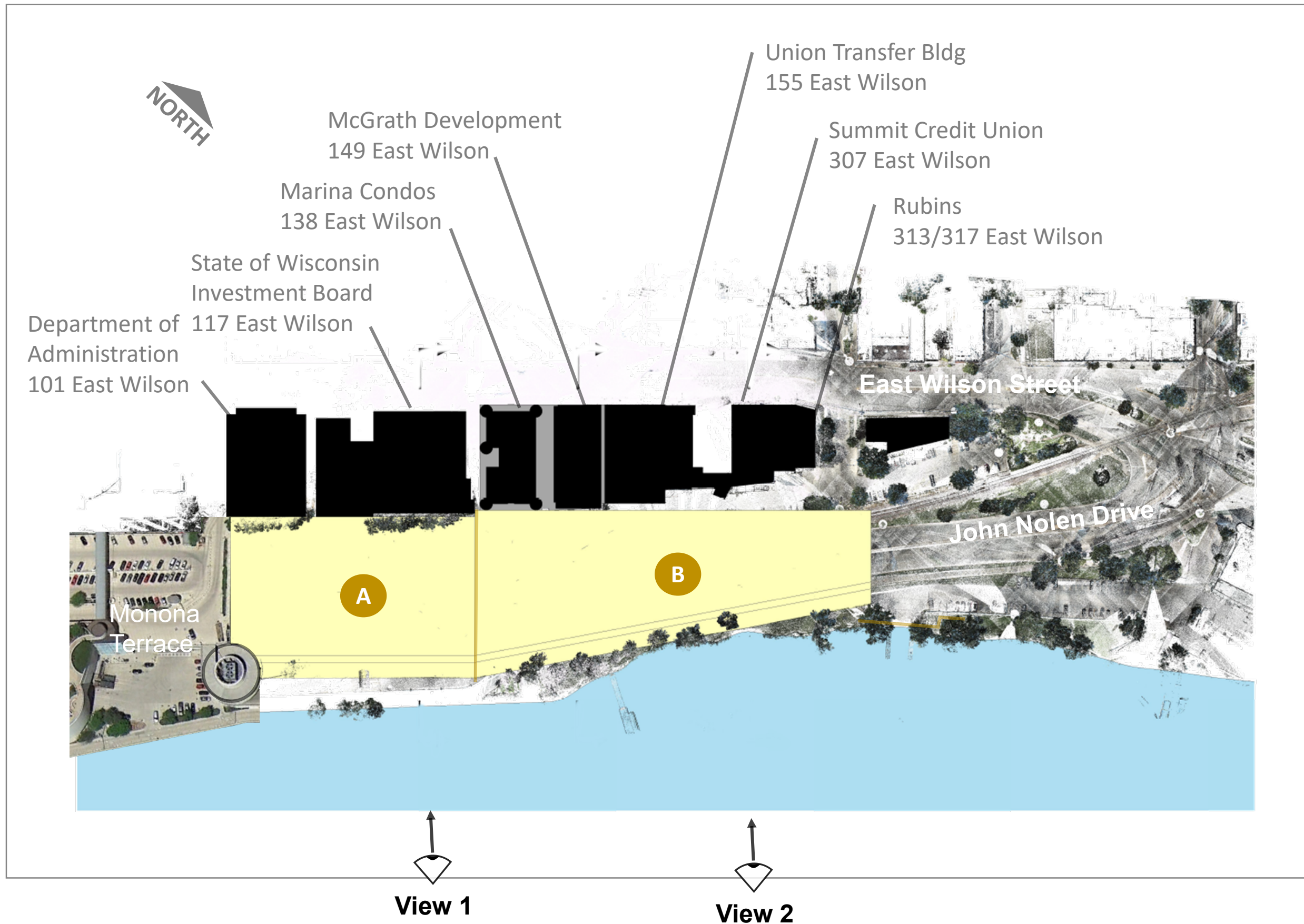


Discussion of Concepts East of Monona Terrace

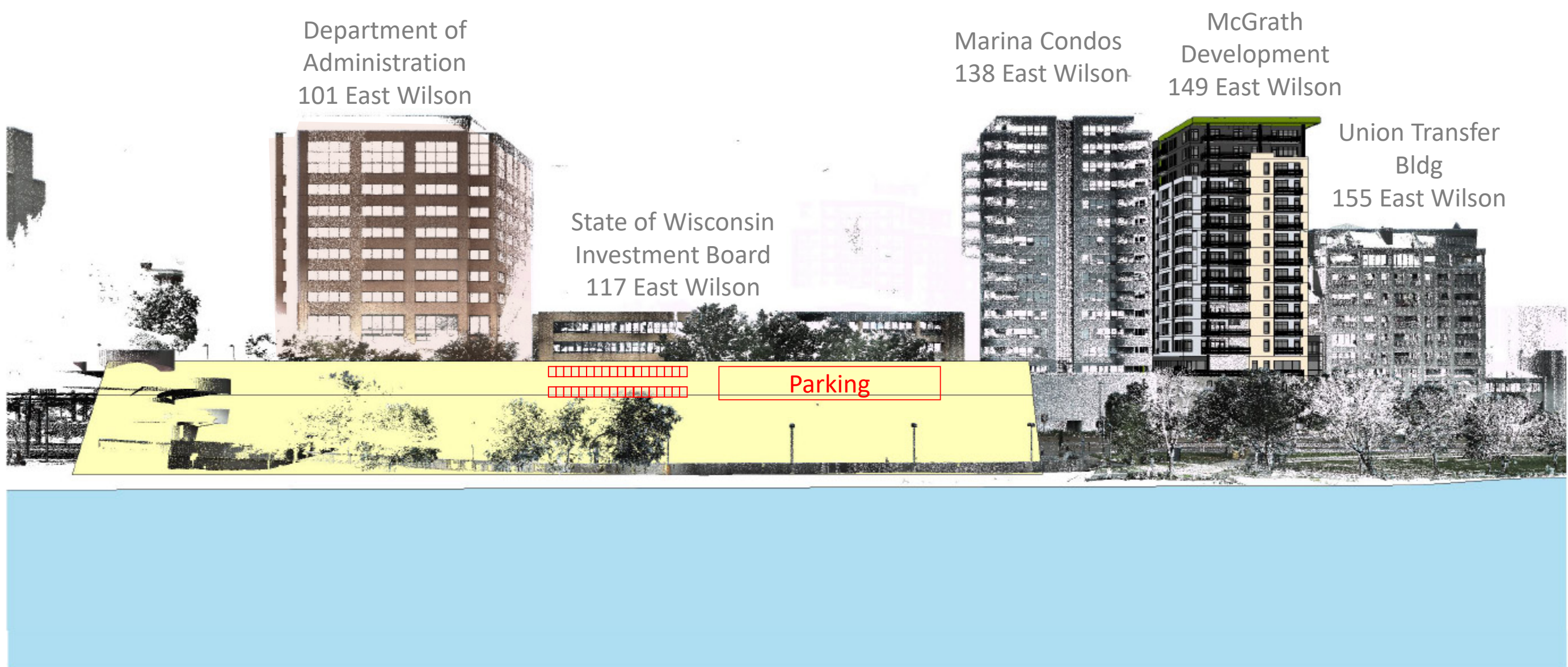
View Shed Analysis with Point Cloud

The City had portions of the John Nolen Corridor laser scanned. Laser scanning creates a series of points, arranged in a 3-dimensional model, that accurately represents the exact locations of buildings, signs, pavements, trees, and other features. The study team used this point cloud to investigate how an extended parking structure/park would affect the view from existing and proposed buildings. To perform this analysis, a block was superimposed above John Nolen Drive east of Monona Terrace.

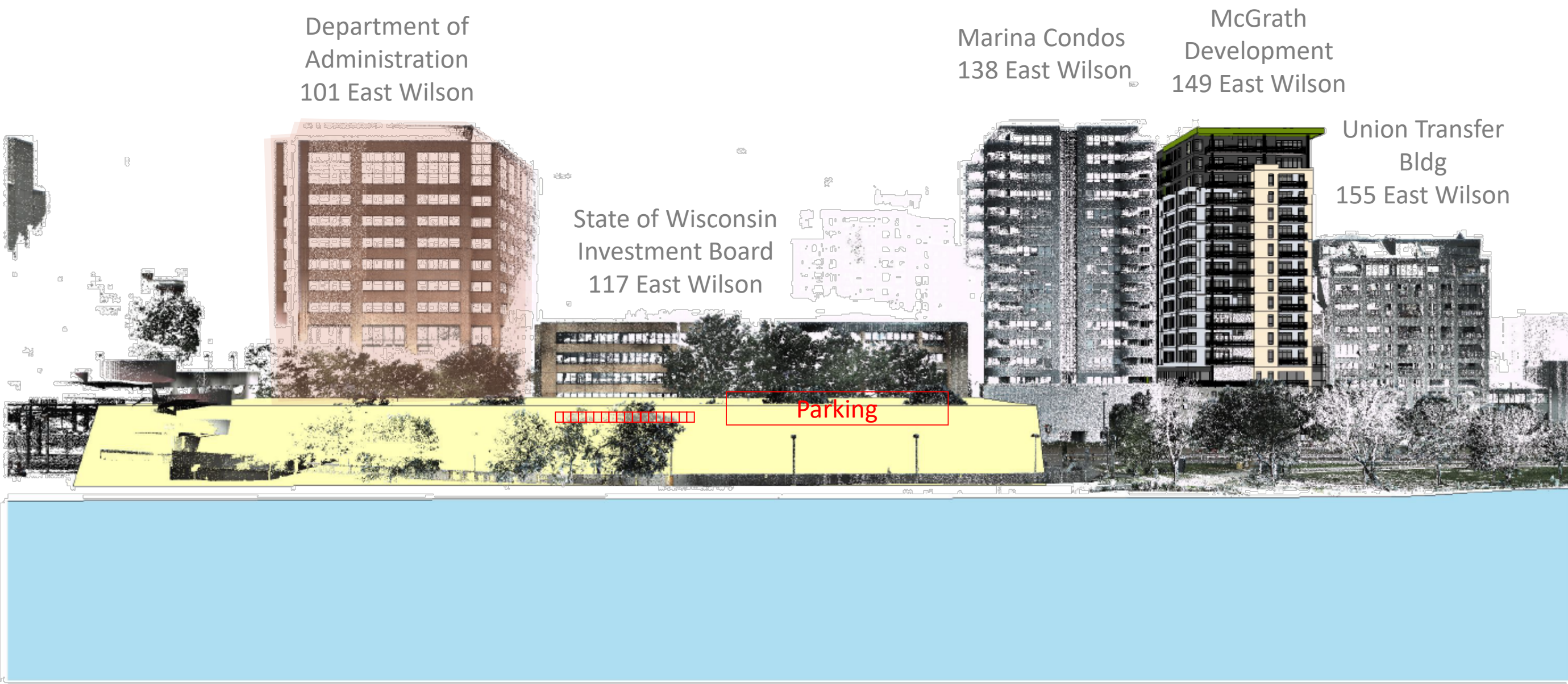
View 1 With and Without Structure Extension Over John Nolen Drive



VIEW 01 EXISTING



VIEW 1 - A - STRUCTURED PARKING AND ROOF TOP PARK



VIEW 1 - A - ROOF TOP PARK ONLY

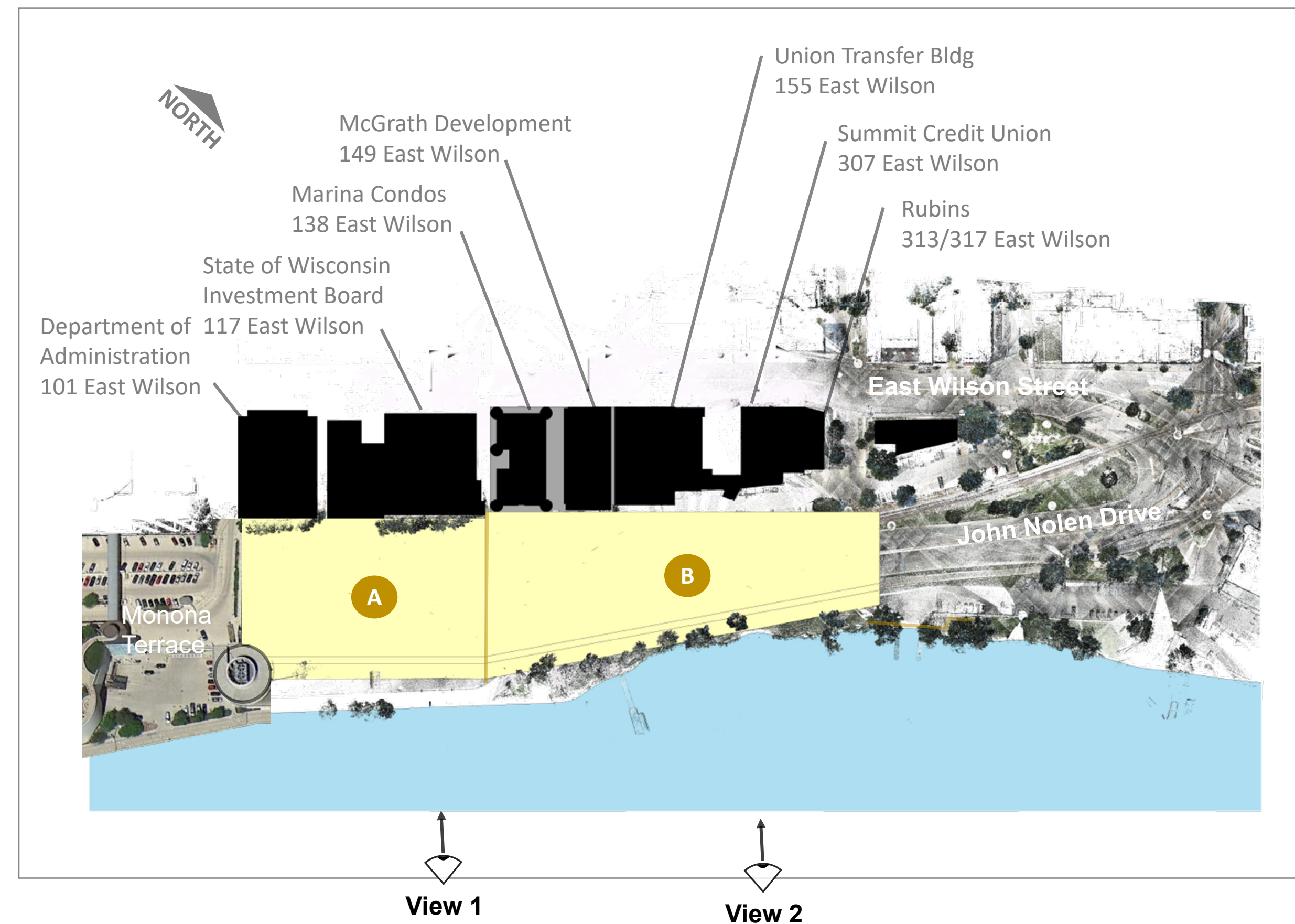


Discussion of Concepts East of Monona Terrace

View Shed Analysis with Point Cloud

The City had portions of the John Nolen Corridor laser scanned. Laser scanning creates a series of points, arranged in a 3-dimensional model, that accurately represents the exact locations of buildings, signs, pavements, trees, and other features. The study team used this point cloud to investigate how an extended parking structure/park would affect the view from existing and proposed buildings. To perform this analysis, a block was superimposed above John Nolen Drive east of Monona Terrace.

View 2 With and Without Structure Extension Over John Nolen Drive



VIEW 02 EXISTING



VIEW 2 - A - STRUCTURED PARKING AND ROOF TOP PARK
B - ROOF TOP PARK ONLY



VIEW 2 - A & B -STRUCTURED PARKING AND ROOF TOP PARK

