

# Monroe Street Reconstruction

Public Preconstruction Meeting

February 21, 2018



# Tonight's Agenda

## **Thank you to Edgewood College!**

1. Project Overview
2. Initial project schedule and phasing
3. Expectations during construction

# Project Team

- Engineering:
  - Jim Wolfe, Project Engineer
  - Lauri Ziegler-Henderson, Inspector
  - Bryan Manning, Assistant Construction Engineer
  - Tom Mohr, Traffic Engineer
  - Jennifer Peterson, Water Inspector
- Contractor
  - Speedway Sand & Gravel
  - Dustin Bittner, Project Manager

# Project Scope & Timeline



- Utilities
- Street
- Side streets

# Utility Work

- Replace sanitary sewer main within limits
  - Replace sewer laterals to property line
- Replace water main at most locations
  - Reconnect services to new main
- Replace & install new storm sewer
  - Improved drainage
  - More capacity on storm sewer system
- Approximately 36,000 LF of pipe work

# Utility Work

- Coordination with Private Utilities
- New MG&E gas main on south side
  - Work has started near Knickerbocker
- New MG&E duct package
  - Regent St. to Edgewood College
  - Joint work with Charter & TDS
- New AT&T conduit throughout

# Street Work

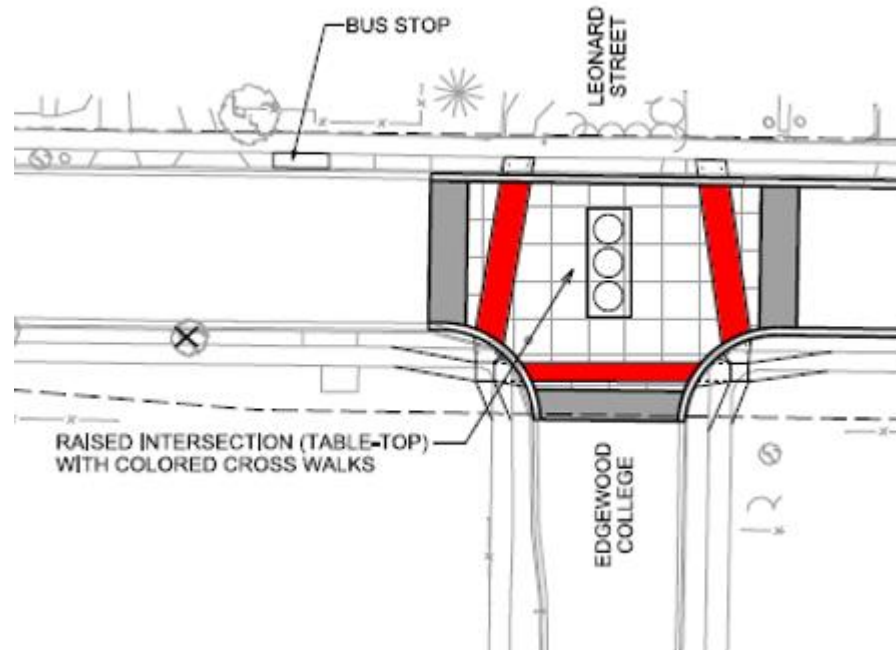
- Replace curb, asphalt pavement and sidewalk, as needed
- New street lighting
  - Area lights
  - Pedestrian scale in business areas





# Pedestrian Improvements

- Raised intersections with colored crosswalks
  - Glenway, Knickerbocker, Leonard, Harrison
  - Designed for buses, fire trucks, drainage
- Rectangular Rapid Flashing Beacons
  - Reinstall at most locations
  - Western Ave. moves to Chapman/Arbor
  - Prospect moved to easterly crosswalk





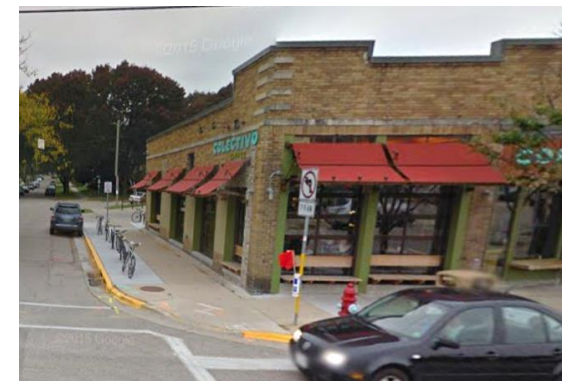
# Pedestrian Improvements

- Islands at several intersections
  - Larger, plantable at Oakland
- High-visibility crosswalks
- Narrow street from Edgewood to Regent
- Countdown timers



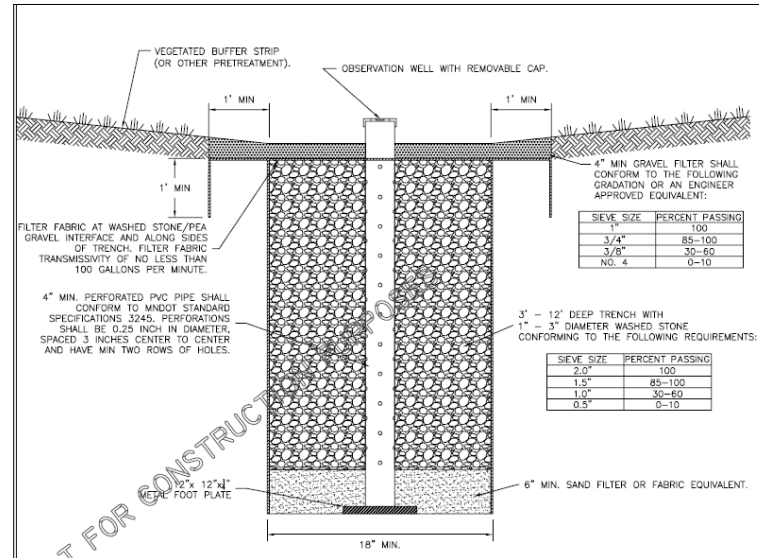
# Bike Infrastructure

- Improved signage along the SW Commuter Path
  - Will be completed before or during project
- On-street bike parking
  - Post-and-ring



# Green Infrastructure

- Wingra Park Screen Structure
- Bioretention/Rain Gardens
  - Plaza
  - Wingra Park Entrance
  - Commonwealth
  - Chapman
- Rock Infiltration Trench





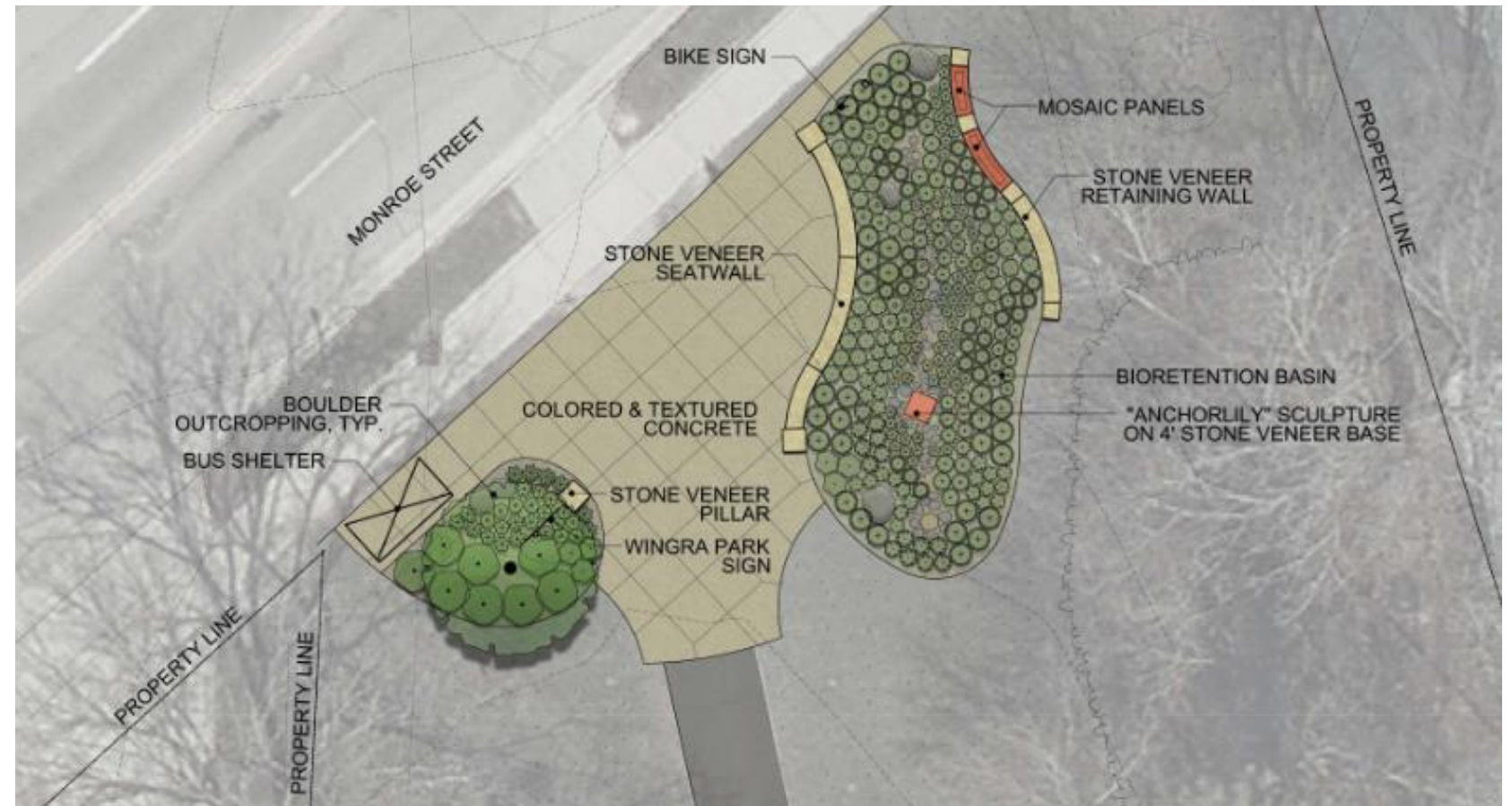
- Monroe Street Plaza
  - Remove Crazy Legs Ln
  - Public Art & new landscaping
  - Vending & seating space
  - Storm water treatment

# Placemaking



# Placemaking

- Wingra Park entrance
  - Public art & landscape design
  - Bus stop with shelter
  - Seating & more open access



# Construction & Access

- Begins March 12, lasts until November 16
  - MG&E gas has started work
  - Preliminary work has also started
  - Temp wood poles, tree removals, utility locating prior to March 12
- Work hours 7am to 7pm
- One lane of traffic, moving inbound, starting 3/12
  - No signed detour planned
  - Side street & intersection closures
    - Breese, Commonwealth & Glenway
    - Consecutive intersections not to be closed at same time

# Construction & Access

- Metro inbound stops on Monroe
  - Temporary locations through construction
- Westbound Metro routes detoured
  - Regent/Speedway/Toepfer/Tokay
- Weekend shuttle service between Monroe & West Transfer Point
- More info:  
<http://www.cityofmadison.com/metro/monroe/>





# Construction & Access



- No on street parking during work hours
  - Includes any loading
- Access maintained to all commercial driveways during construction
  - Brief delays when working at each driveway
- Residential driveways closed up to 20 days
- Residents in 2 hour parking zones may apply for free residential parking permits
  - Contact Project Engineer for applications
- Review side streets for suspension of street sweeping parking restrictions

# Construction & Access

- Contractor to provide access for garbage & recycling pick-up
  - Have cart out by 5AM on day of pick-up or put out the night before
  - Mark address on cart in case contractor needs to move to allow for pick-up
  - Depending on access, collection may be at side streets
  - Properties on corners, put carts on side street
- Plan on no brush collection during construction
- Contractor to provide access for mail delivery

# Construction & Access

- During construction, sidewalks will remain open on at least one side at all times
- Sidewalk access open to all businesses, but may be from only 1 end of block
  - Laterals & concrete work
- Temporary crosswalks installed as necessary
- Detours provided for bike path around construction zones

# Utility Services

- Average of 2 planned water shut-offs
  - Minimum 48 hrs notice prior to shut-offs; more notice given when possible
  - Emergency shut-offs possible, notify affected properties ASAP
- No disruptions to sewer service
- Private utilities to provide notification of any other utility disruptions
  - Gas service with new gas main installation
  - No expected disruption to electrical service

# Construction Schedule & Phasing

- Work to begin in 3-4 locations
  - West end near Nakoma & Glenway
  - East end near Oakland & Regent
  - Knickerbocker, moving east
  - Possibly start work on treatment structure in Park
- Phase 1
  - Work on north side (Glenway to Edgewood)
    - Traffic on south side
  - Work on south side (Edgewood to Regent)
    - Traffic on north side
  - Nakoma/Odana area has separate phasing
  - At start, work on water main in most locations
  - Sanitary sewer main & laterals to follow

# Construction Schedule & Phasing

- Phase 2
  - Work on south side (Glenway to Edgewood)
    - Traffic on north side
  - Work on north side (Edgewood to Regent)
    - Traffic on south side
  - Change to Phase 2 depends on location
- As utility work is completed, street restored
  - Gravel base, curb, lower layer pavement
  - Wait until significant portions ready
  - Final layer of pavement near the end
- Additional crews for private utilities may be working in areas at same time

# Construction Schedule & Phasing

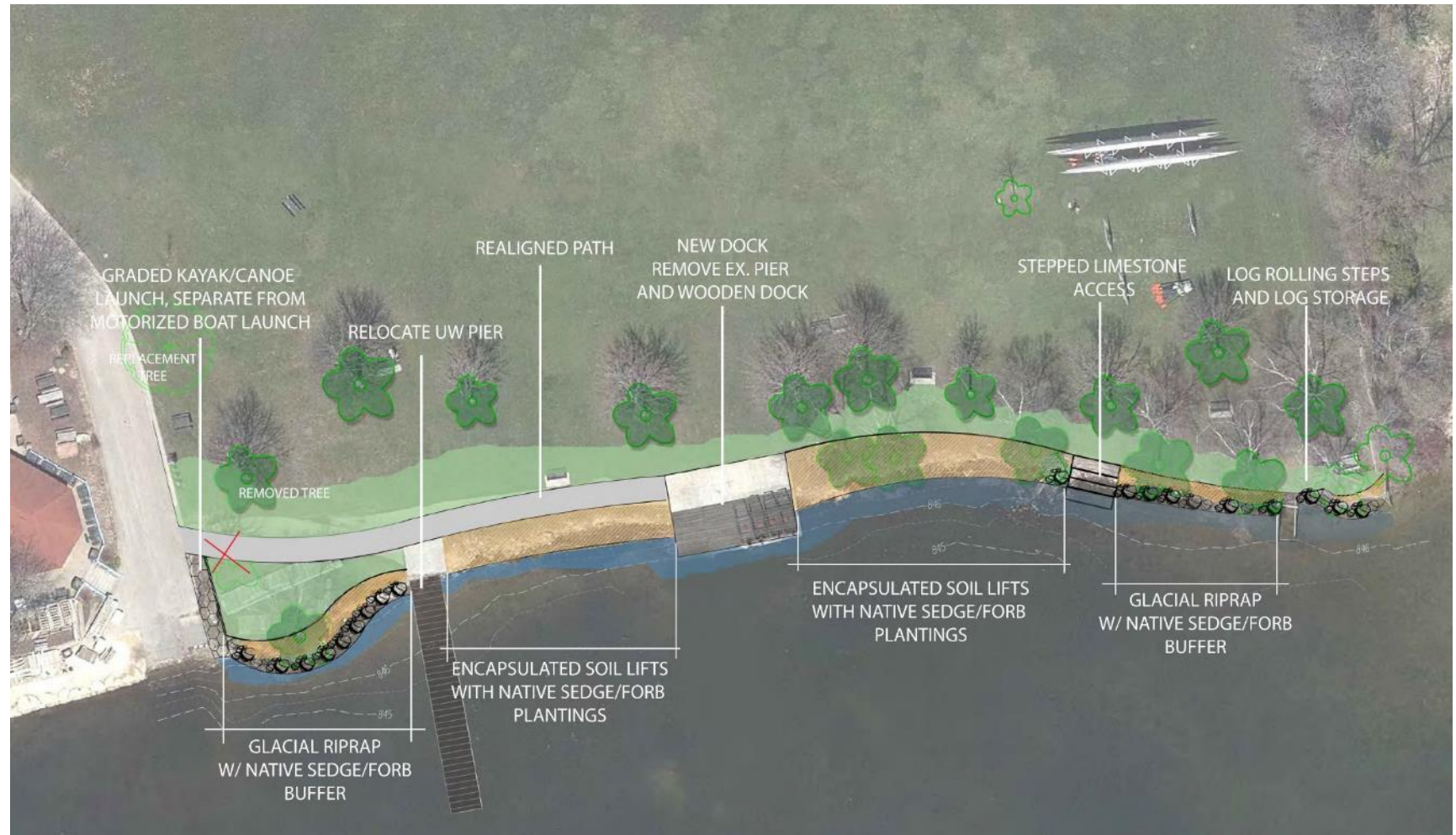
- Interim completion dates
  - Two-way traffic Nakoma to Glenway by 7/28
  - Complete Grant to Regent by 8/30
    - Traffic remains as one lane, one-way
    - Some miscellaneous work may remain
    - Review for possible street parking
  - Two-way traffic on Odana by 9/1
- Updates on closures & work progress will be posted to the project website



# Wingra Park

- Monroe project includes storm sewer (treatment structure) and park entrance
- Additional shoreline restoration project
  - Stabilize shoreline from boat launch to east
  - Install a canoe launch west of boat launch
  - Replace deteriorating wooden pier
  - Install limestone steps for lake access
  - Replace asphalt path
  - Late March through end of May, plantings to follow

# Wingra Park



# Contacts

- Project Engineer: Jim Wolfe, 266-4099 or [jwolfe@cityofmadison.com](mailto:jwolfe@cityofmadison.com)
- Inspector: Lauri Ziegler-Henderson, 520-2529 or [lziegler-Henderson@cityofmadison.com](mailto:lziegler-Henderson@cityofmadison.com)
- Water Inspector: Jennifer Peterson, 209-6726 or [jpeterson@madisonwater.org](mailto:jpeterson@madisonwater.org)
- Field Office located at 2702 Monroe: 720-1199
  - Messages forwarded

A large, solid orange speech bubble with a tail pointing towards the bottom right corner of the frame. The bubble is centered horizontally and vertically on the page.

Questions?