

<b>6:00 – 6:15</b>	Welcome
<b>6:15 – 7:10</b>	Presentation
<b>7:10 – 7:25</b>	Presentation Q & A
<b>7:25 – 8:00</b>	Small Group Discussions

# Watershed Studies 2019

By City of Madison Engineering Division



# Evening Overview

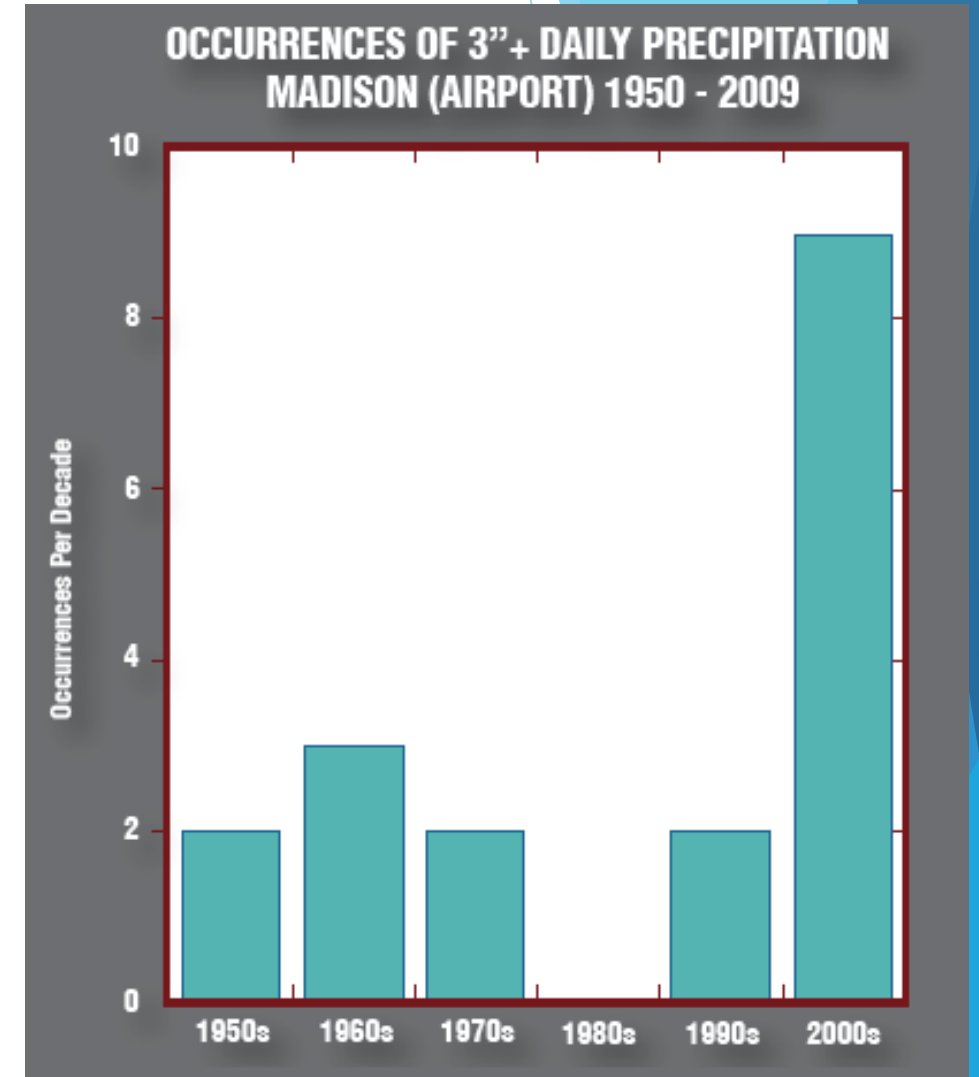
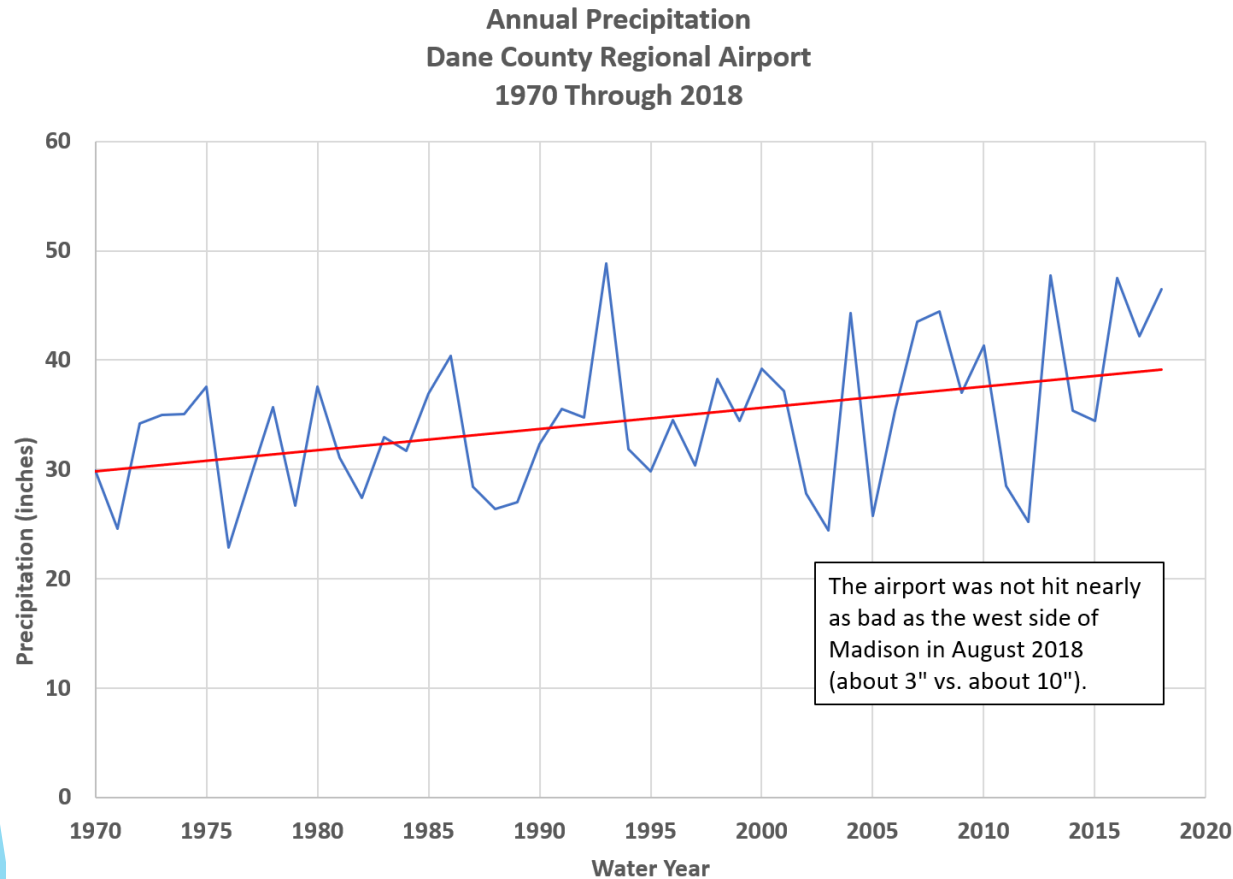
- ▶ Welcome (Hannah Mohelnitzky, City of Madison)
- ▶ Presentation (Jim Bachhuber, Brown and Caldwell)
- ▶ Q&A (facilitated by Hannah Mohelnitzky, City of Madison)
- ▶ Wrap Up (Hannah Mohelnitzky, City of Madison)
- ▶ Breakout to Small Groups (City of Madison, Brown and Caldwell Staff)

# Presentation Overview

1. Why We Are Here
2. 100-Yr Storm Definition
3. Where the Water Goes
4. Reasons for Flooding Issues
5. Watershed Study Goals
6. Next Steps
7. Property Owner Responsibilities
8. How to Stay Involved

# Why We Are Here: Historic Events

- ▶ More rain
- ▶ More rain events greater than 3"



*Wisconsin's Changing Climate: Impacts and Adaptation. 2011. Wisconsin Initiative on Climate Change Impacts. Nelson Institute for Environmental Studies, University of Wisconsin-Madison and the Wisconsin Department of Natural Resources, Madison, Wisconsin.*

# Why We Are Here: Historic Rain Events

## Recent Rain Events

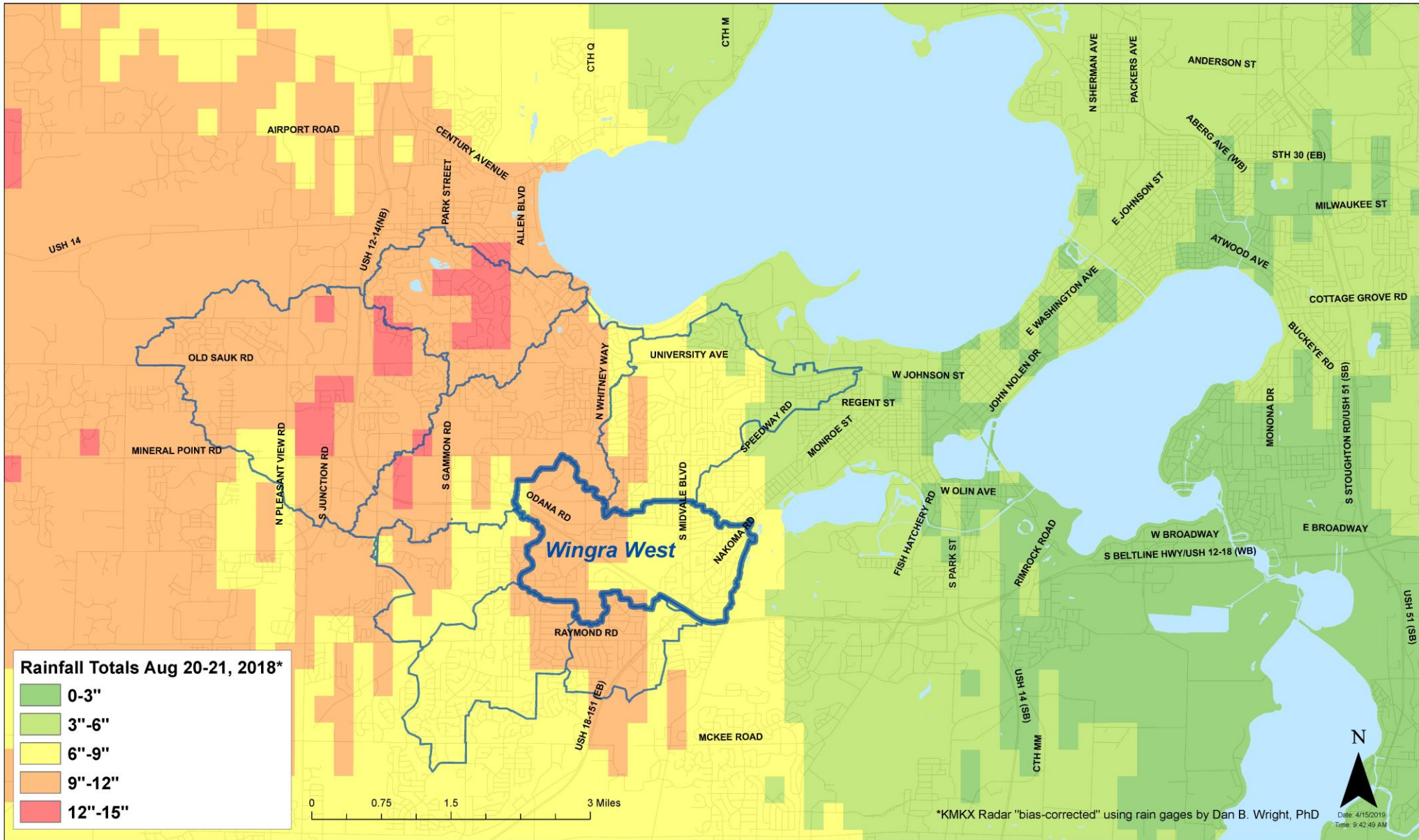
- ▶ July 21, 2016: 2.41" in 2 hours
- ▶ June 16, 2018: 1.54" in 2 hours
- ▶ August 20, 2018: 6.72" in 14 hours



*All rainfall totals taken from the Weather Underground Camelot Dr station (KWIMADIS87) in Madison, WI.*

E Johnson Street, Madison, WI

# Rainfall Totals August 20-21, 2018



KMKX Radar that was  
"bias corrected" using  
rain gauges by UW  
Professor Dan Wright

# Why We Are Here: Historic Rain Events

- ▶ Recent storms have amplified known inadequacies
- ▶ Recent storms have revealed new storm sewer deficiencies
- ⇒ Result: flood damage



Deming Way, Madison, WI

# Why We Are Here: Historic Rain Events

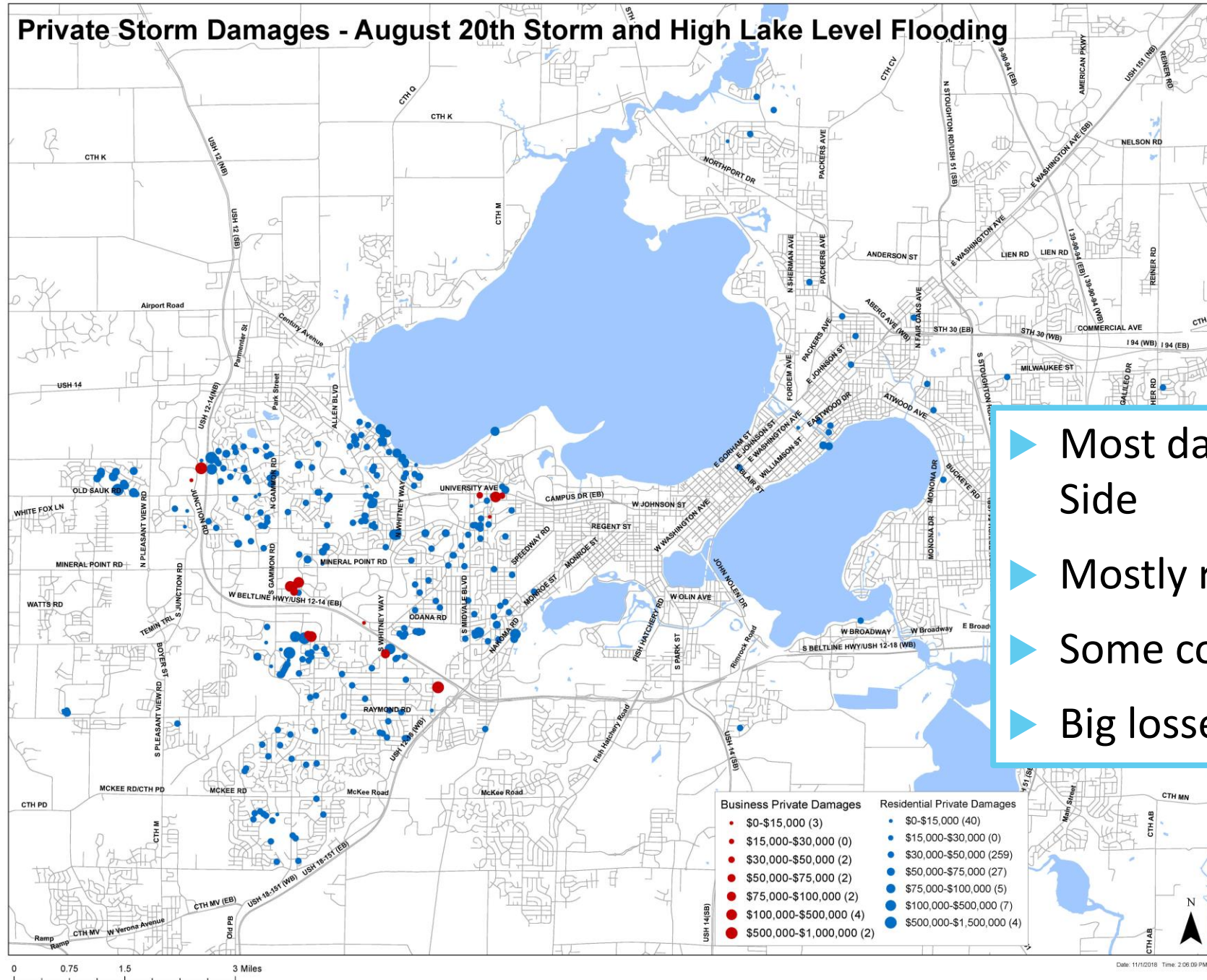
- ▶ August 20<sup>th</sup> event: substantial damage
  - ▶ Public infrastructure: \$4 million
  - ▶ Private property: reported \$17.5 million, estimated \$30 million



Odana Road (above), Glenwood  
Children's Park (right), Madison, WI



# Private Storm Damages - August 20th Storm and High Lake Level Flooding



- ▶ Most damage on the West Side
- ▶ Mostly residential damage
- ▶ Some commercial damages
- ▶ Big losses!

# Why We Are Here: Historic Rain Events

- ▶ Recent storms have amplified known inadequacies
- ▶ Recent storms have revealed new storm sewer deficiencies
- ⇒ Result: flood damage
- ▶ City's plan
  - ▶ Complete watershed studies of impacted areas
  - ▶ Develop solutions from watershed studies



Deming Way, Madison, WI

# 100-Year Storm Definition

## The “100-Year” Storm

- ▶ Annual exceedance probability (AEP): chance that a rainfall event will occur in one year.
- ▶ 100-yr storm = 1/100 (1%) AEP
  - ▶ Does **NOT** mean that a storm will only occur once in 100 years.
  - ▶ During a 30-year mortgage, there’s a 26% chance of experiencing a 100-year (1%) event.

Annual Exceedance Probability (AEP)	Chance of occurring in 1 Year	Return Period or Average Recurrence Interval (ARI)
100%	1 in 1	1-year
50%	1 in 2	2-year
10%	1 in 10	10-year
4%	1 in 25	25-year
1%	1 in 100	100-year
0.10%	1 in 1000	1000-year

# Historic Rain Events: In Context

## Recent Rain Events

- ▶ July 21, 2016: 2.41" in 2 hours
  - ▶ 10% chance of occurring each year
- ▶ June 16, 2018: 1.54" in 2 hours
  - ▶ 75% chance of occurring each year
- ▶ August 20, 2018: 6.72" in 14 hours
  - ▶ Less than a 1.0% chance of occurring each year

*All rainfall totals taken from the Weather Underground Camelot Dr station (KWIMADIS87) in Madison, WI.*

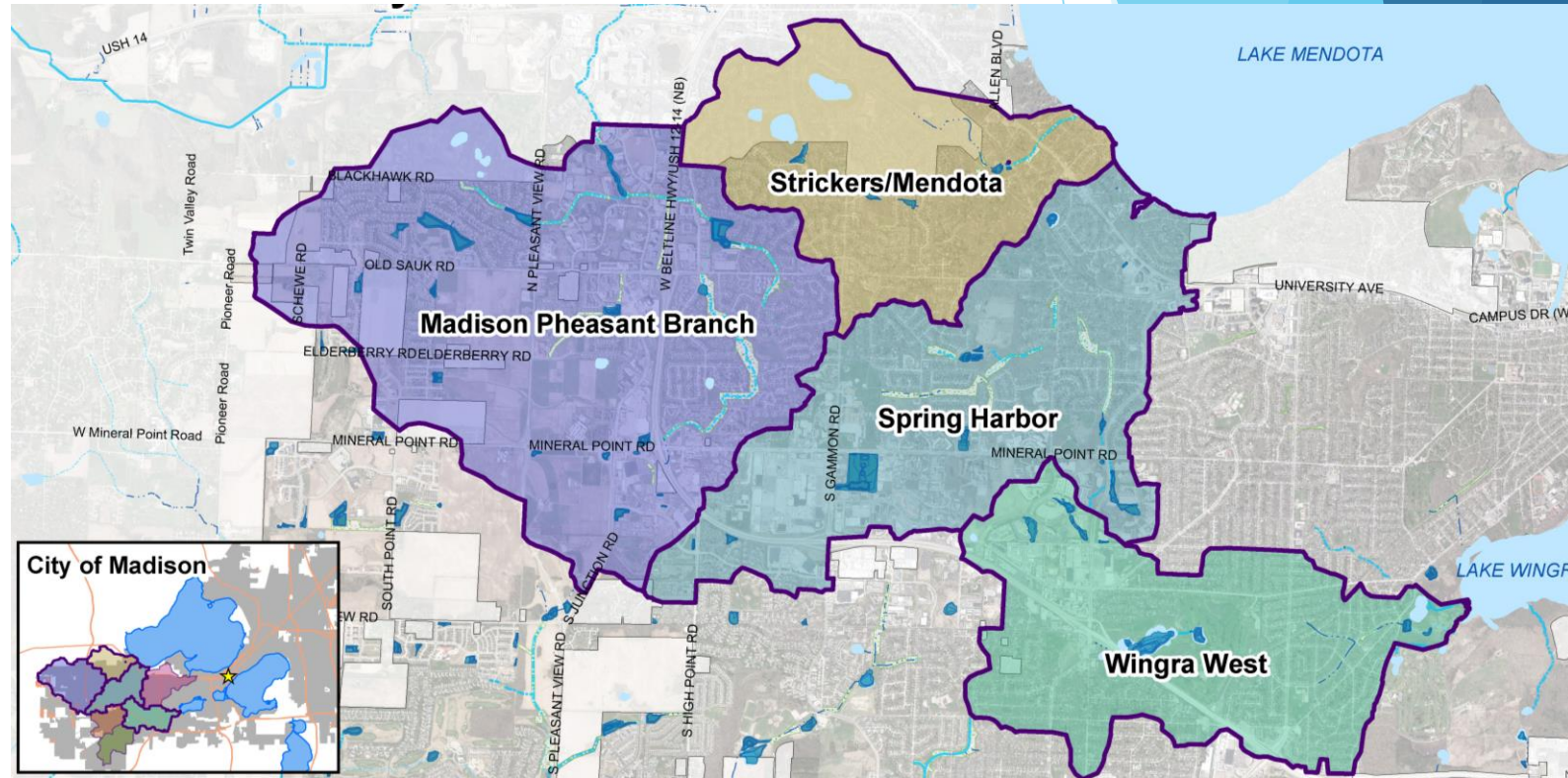


E Johnson Street, Madison, WI

# Where the Water Goes

What's a watershed?

- ▶ A watershed is the area of land that drains precipitation (rain, snow, etc.) to a common low point, such as an inlet, stream, or lake.
- ▶ Determined by surface terrain and underground pipe system.



# Where the Water Goes: Sewer Systems

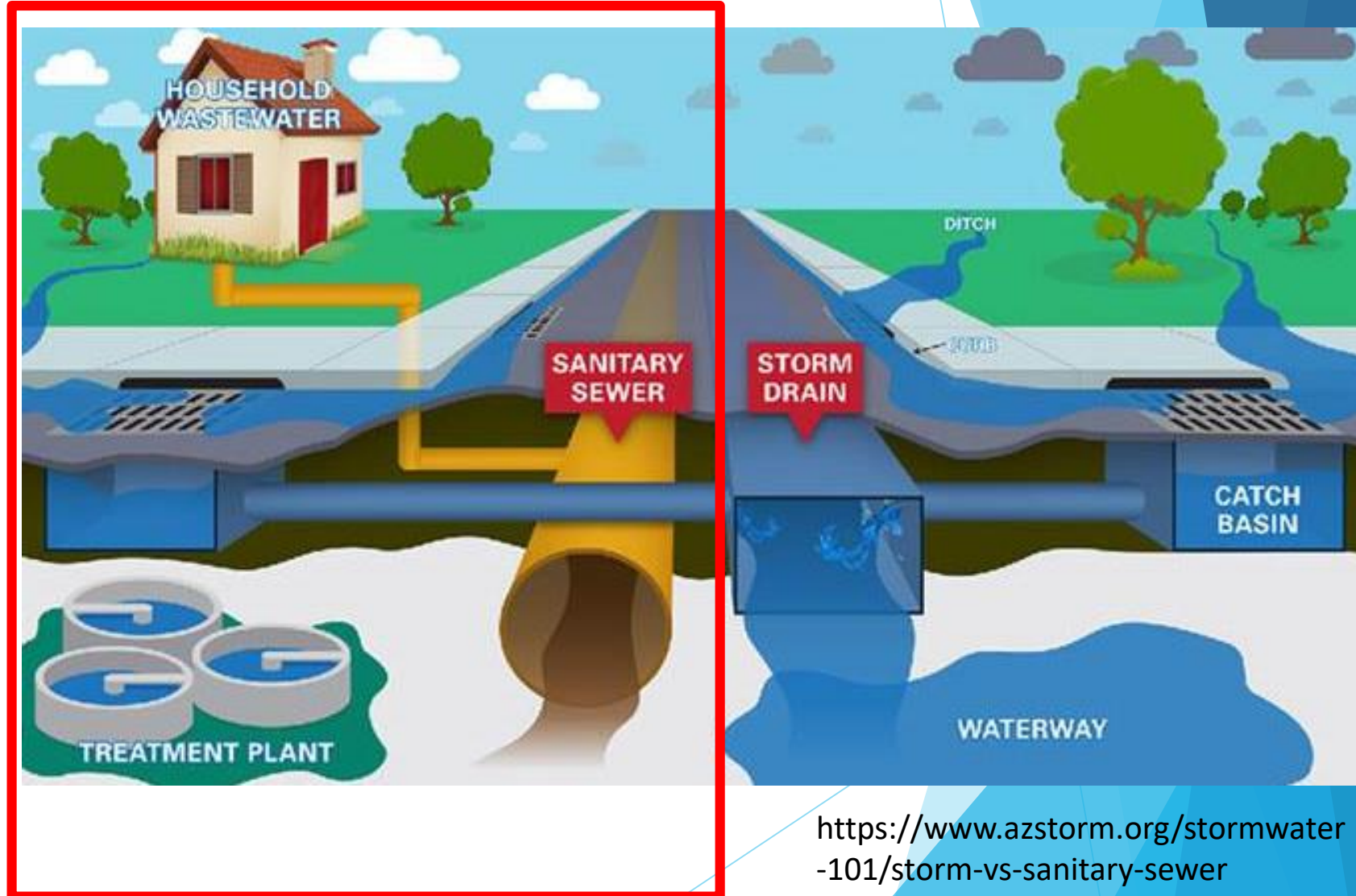
- ▶ Madison has separate storm and sanitary sewers
- ▶ Storm sewer system is NOT the same as the sanitary sewer system



<https://www.azstorm.org/stormwater-101/storm-vs-sanitary-sewer>

# Where the Water Goes: Sanitary Sewer

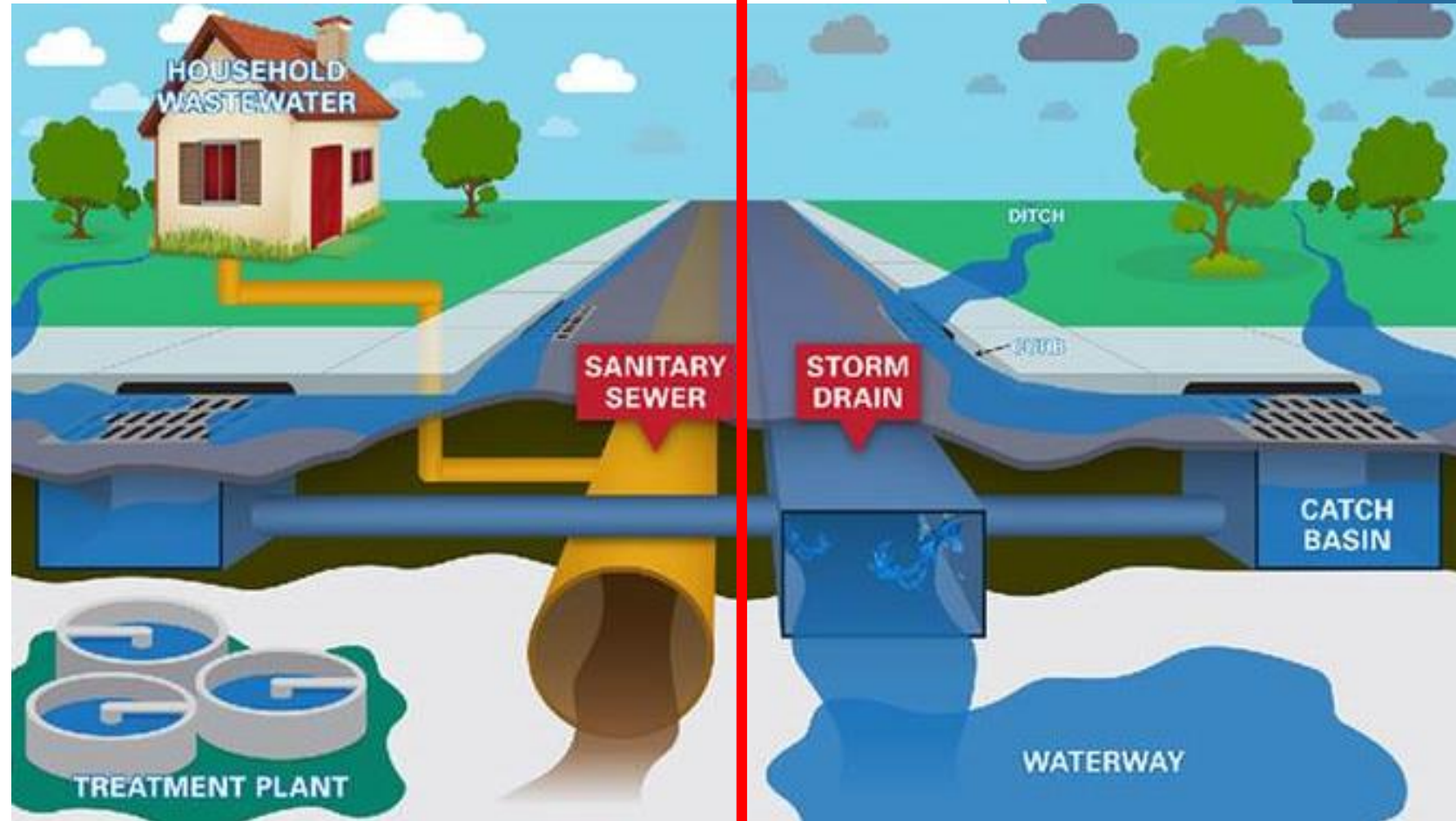
- ▶ Sanitary sewer drains residential (toilets, showers, kitchen sinks, etc.), commercial and industrial wastewater streams
- ▶ Sanitary sewer transports wastewater to Madison Metropolitan Sewerage District (MMSD) treatment plant
- ▶ Sanitary infrastructure includes:
  - ▶ Manholes
  - ▶ Household lateral pipes
  - ▶ Main collector pipes



<https://www.azstorm.org/stormwater-101/storm-vs-sanitary-sewer>

# Where the Water Goes: Storm System

- ▶ Our stormwater drains to local surface waters
- ▶ We try to treat for nutrients and sediment
- ▶ Storm infrastructure includes:
  - ▶ Curbs and gutters
  - ▶ Inlets
  - ▶ Pipes
  - ▶ Channels (greenways)
  - ▶ Ponds



<https://www.azstorm.org/stormwater-101/storm-vs-sanitary-sewer>

# Where the Water Goes: Storm System in Madison



Greenway at Owen Conservation Park



Above: 96" pipe on University Ave (2013)  
Below: storm sewer inlet on W Doty St



# Reasons for Flooding Issues

- ▶ In Wingra West watershed, flooding is not significantly driven by lake levels
- ▶ Madison lake levels: defined by DNR and implemented by Dane County
  - ▶ Tenney Lock
  - ▶ Yahara Lakes function as a system
  - ▶ Solution to problems is increased conveyance through lake chain
- ▶ Website:  
<https://lwr.d.countyofdane.com/Yahara-Chain-of-Lakes-Lake-Levels-Task-Force>



<https://www.wiscontext.org/yahara-watershed>

# Reasons for Flooding Issues

- ▶ Flash flooding: when storm sewer system cannot handle high amounts of rain
- ▶ Comparative example: a traffic jam
  - ▶ Too many cars of the Beltline during rush hour → backups happen
- ▶ During a storm, more water tries to move through the storm sewer system → backups happen



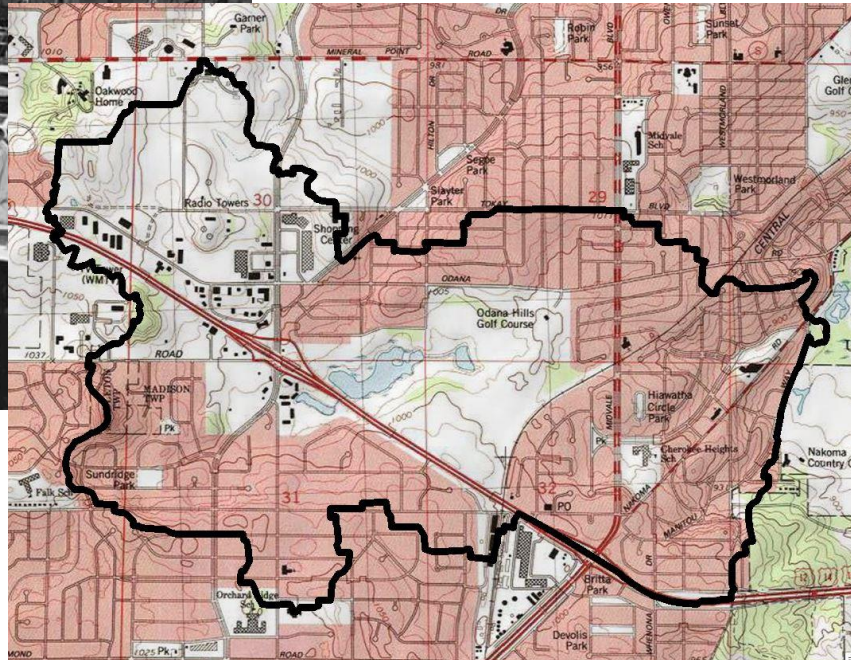
Beltline, looking west from Park Street, WisDOT

# Reasons for Flooding Issues

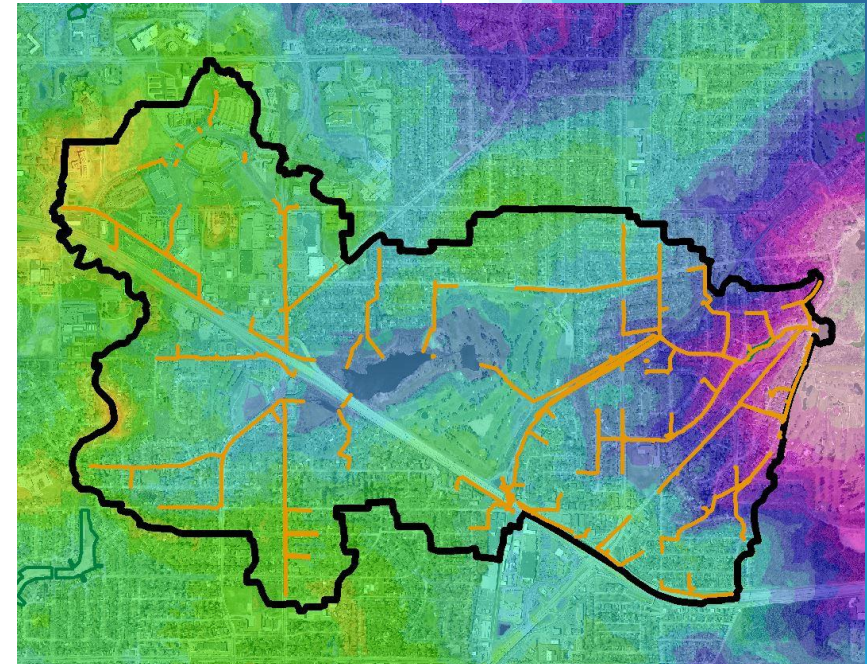
- ▶ Tools have changed in the last five decades.
- ▶ Old tools made data gathering and stormwater modeling difficult.



Photo above:  
<https://www.vintag.es/2018/08/life-before-autocad.html>



**VS.**

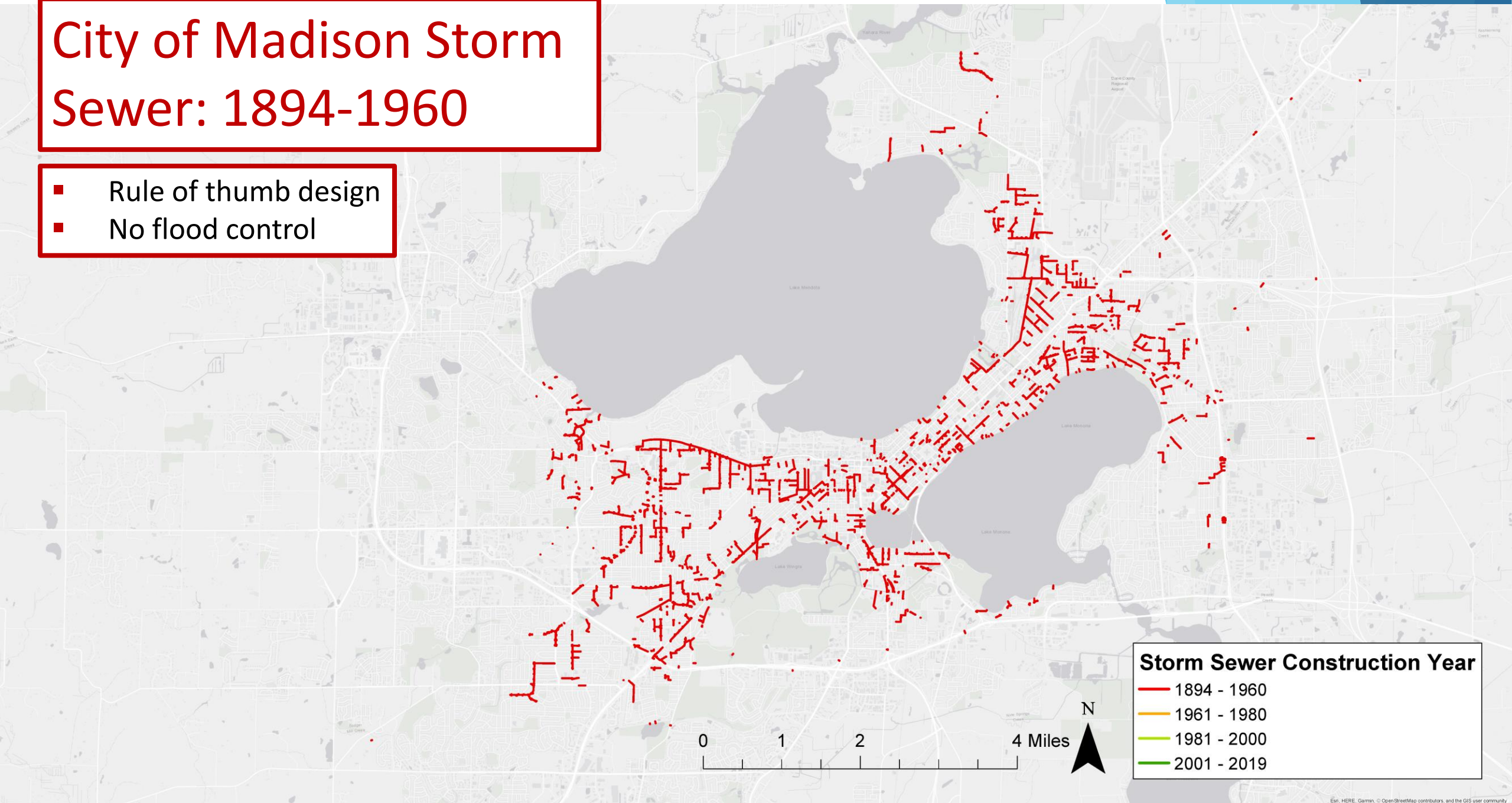


# Reasons for Flooding Issues: Changing Design Standards

- ▶ Changing public design standards and past limited private design standards have led to flash flooding.
- ▶ Lax historical building requirements created hard-to-solve flooding problems on private property which cannot be easily corrected.

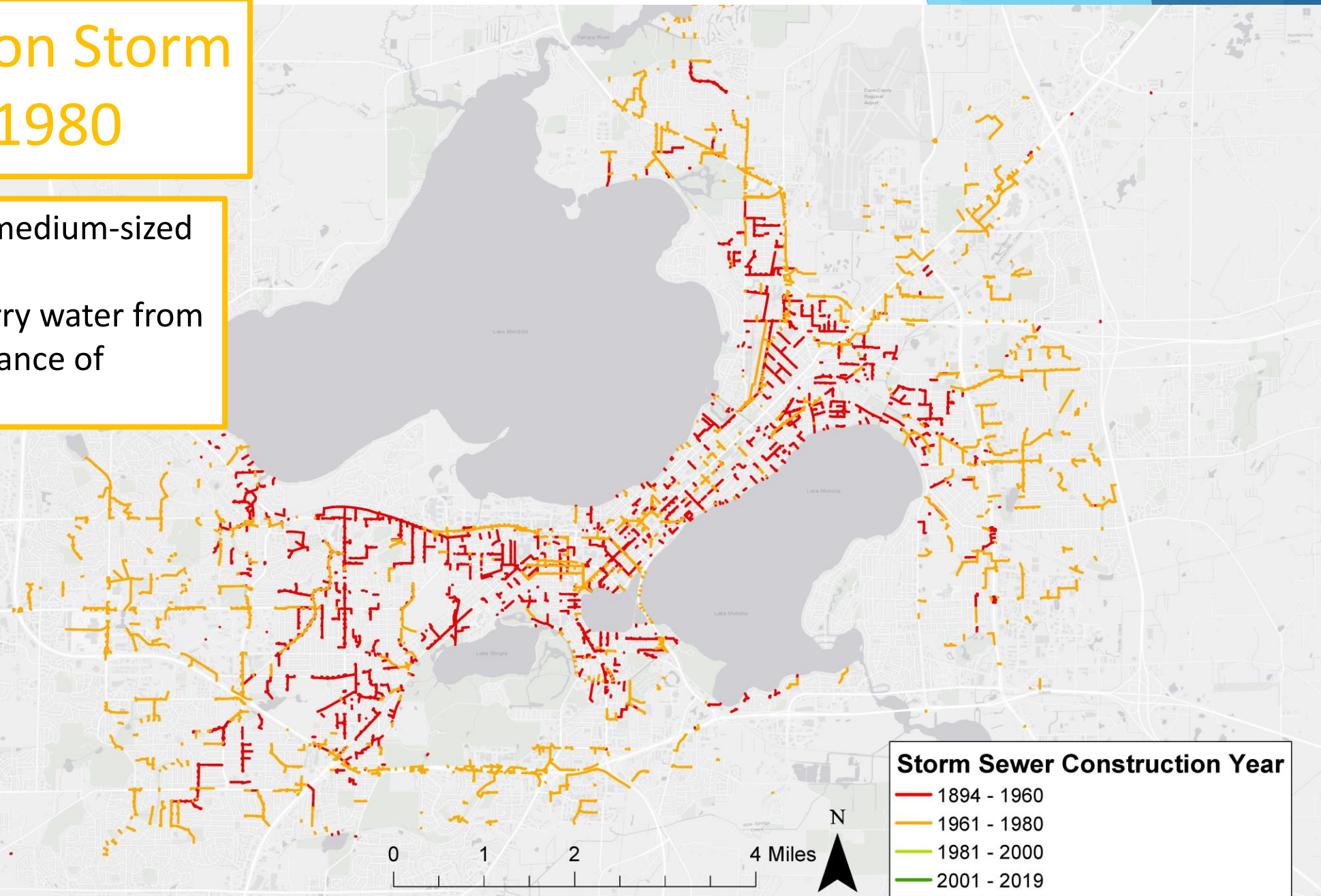
# City of Madison Storm Sewer: 1894-1960

- Rule of thumb design
- No flood control



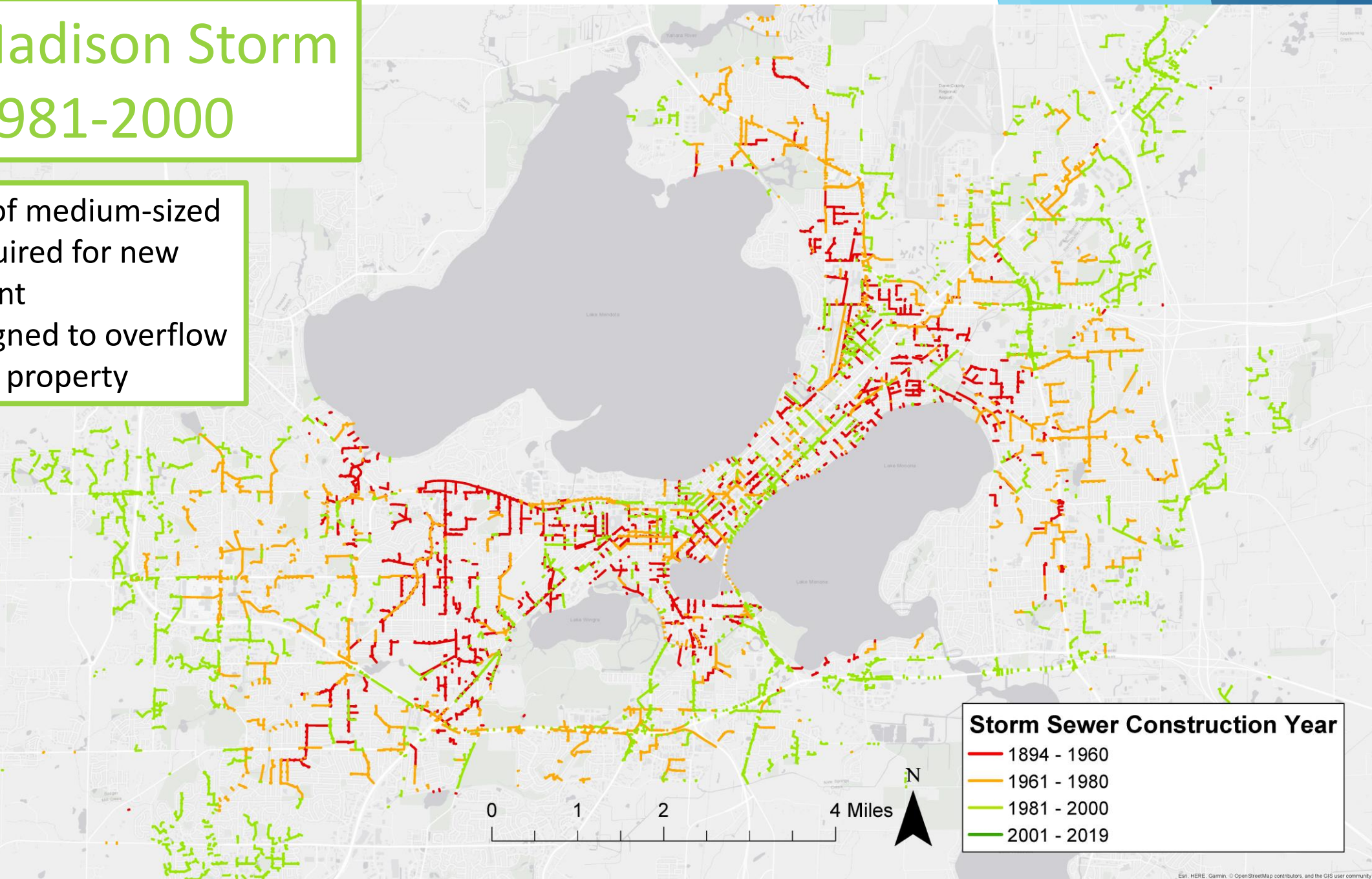
# City of Madison Storm Sewer: 1961-1980

- Pipes designed for medium-sized storms
- Culverts sized to carry water from storms with 10% chance of occurring each year



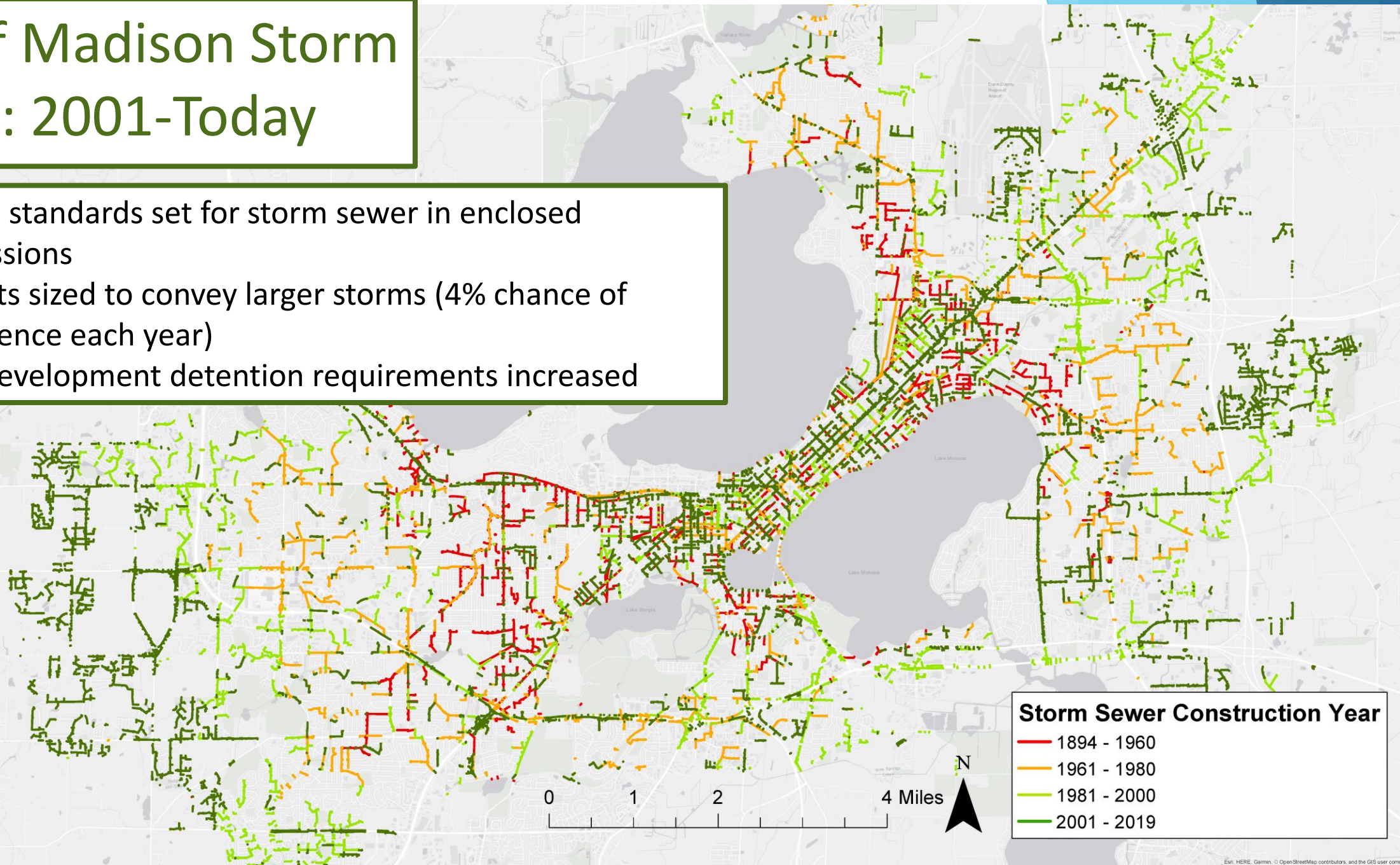
# City of Madison Storm Sewer: 1981-2000

- Detention of medium-sized storms required for new development
- Ponds designed to overflow onto public property



# City of Madison Storm Sewer: 2001-Today

- Design standards set for storm sewer in enclosed depressions
- Culverts sized to convey larger storms (4% chance of occurrence each year)
- New development detention requirements increased



# Why Replacement Takes Time

- ▶ Road reconstruction, storm sewer is expensive but long-lasting
  - ▶ Road reconstruction cost = approximately \$500-\$2,000/ft
  - ▶ 2% City infrastructure is upgraded annually
  - ▶ Average life:
    - ▶ Street=30-50 years
    - ▶ Pipes=50-100 years
- ▶ Storm Water Utility bill
  - ▶ 2018 increased 2.3% (avg. residential increase of \$2.15/year)
  - ▶ 2019 increased 10.1% (avg. residential increase of \$9.60/year)



96" pipe tunneling on University Ave, Madison, WI  
(2013)

# Watershed Study Goals

- Find out why flooding happens in certain locations.



Example output from watershed modeling

# Watershed Study Goals

- ▶ Find out why flooding happens in certain locations
- ▶ System goals
  - ▶ Eliminate flooding from storm sewer during storms with a 10% chance of occurring each year (4.1" of rain in a day)



N. High Point Road at Old Sauk Road, Madison, WI

# Watershed Study Goals

- ▶ Find out why flooding happens in certain locations
- ▶ System goals
  - ▶ Eliminate flooding from storm sewer during storms with a 10% chance of occurring each year (4.1" of rain in a day)
  - ▶ Cars can pass down the middle (highest) part of the street during a storm with a 4% chance of occurring each year (5.0" of rain in a day)



Winding Way, Madison, WI

# Watershed Study Goals

- ▶ Find out why flooding happens in certain locations
- ▶ System goals
  - ▶ Eliminate flooding from storm sewer during storms with a 10% chance of occurring each year (4.1" of rain in a day)
  - ▶ Cars can pass down the middle (highest) part of the street during a storm with a 4% chance of occurring each year (5.0" of rain in a day)
  - ▶ Structure (buildings, infrastructure and homes) and major roadway damage is eliminated for storms with a 1% chance of occurring each year (6.7" of rain in a day)



Regent St at Kenosha Ave, Madison, WI

# Watershed Study Goals

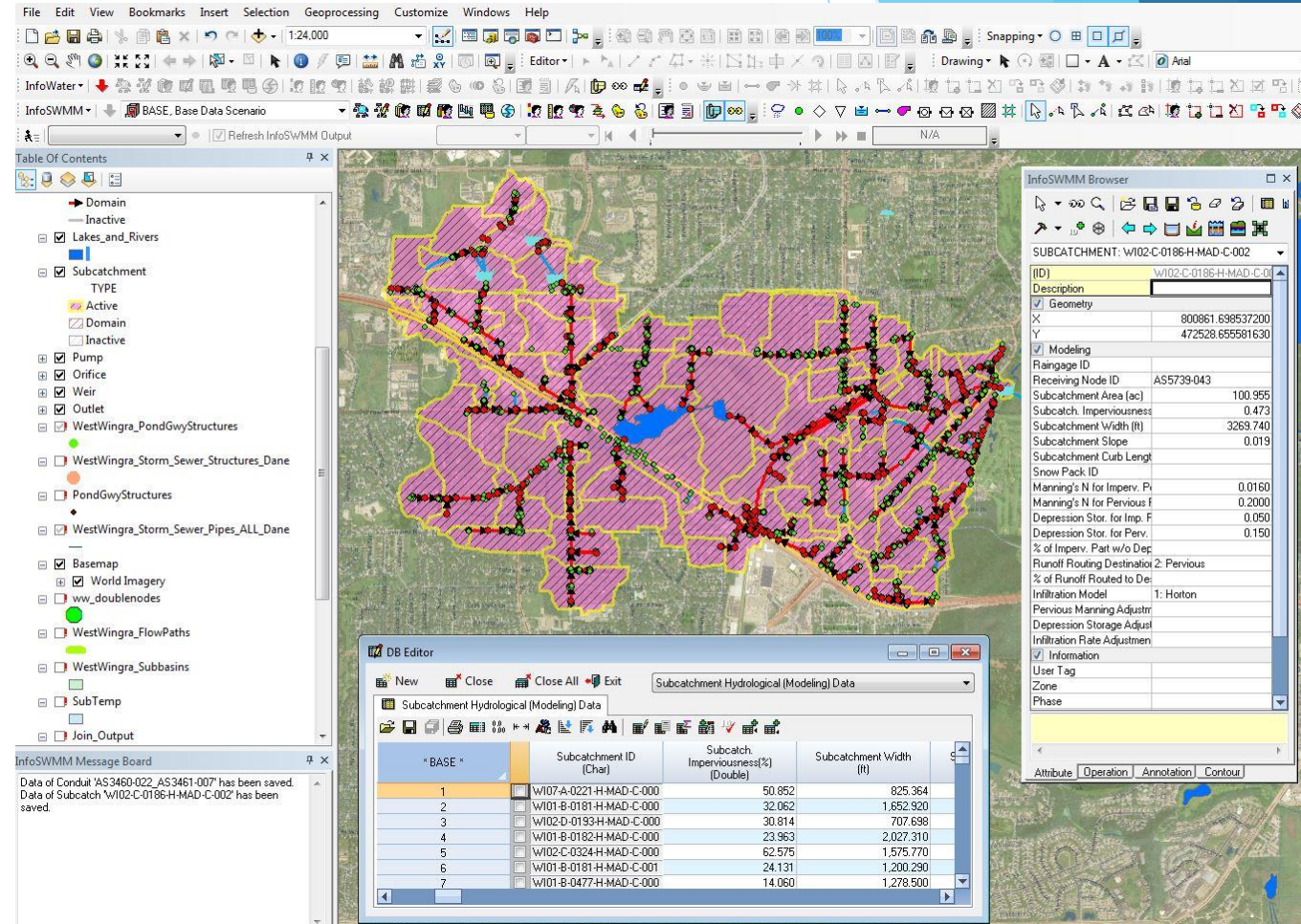
- ▶ Find out why flooding happens in certain locations
- ▶ System goals
  - ▶ Eliminate flooding from storm sewer during storms with a 10% chance of occurring each year (4.1" of rain in a day)
  - ▶ Cars can pass down the middle (highest) part of the street during a storm with a 4% chance of occurring each year (5.0" of rain in a day)
  - ▶ Structure and major roadway damage is eliminated for storms with a 1% chance of occurring each year (6.7" of rain in a day)
  - ▶ Flooding extents known during storms with a 0.2% chance of occurring each year (9.0" of rain in a day)



Tenney Park, Madison, WI

# Watershed Study Goals

- ▶ Find out why flooding happens in certain locations
- ▶ System goals
- ▶ Test solutions
  - ▶ Lots more detail gets added in final design
  - ▶ Will help prioritize and budget future projects



Computer Model of Wingra West Stormwater System

# Watershed Study Limitations

- ▶ Retrofitting infrastructure takes time and money
- ▶ Repairs are not always easy, popular, or cheap
- ▶ Not always a good solution
- ▶ Property owners will need to create solutions too
- ▶ Solutions will need broad community cooperation
- ▶ Groundwater problems not easily addressed by watershed modeling and surface infrastructure

# Next Steps

Model Existing Conditions & Predict Future Flood Risk

Analyze Solutions on Watershed Scale, Rank & Budget


**Create  
Drainage  
Model**

**Identify  
Flooding  
Impacts**

**Develop  
Engineering  
Solutions**

**Prioritize  
& Budget**

# Next Steps



**Create  
Drainage  
Model**

**Identify  
Flooding  
Impacts**

**Develop  
Engineering  
Solutions**

**Prioritize  
& Budget**

- ▶ Gather model input data
- ▶ Install equipment and measure rainfall and channel flow
- ▶ Build computer models to represent rainfall-runoff-routing
- ▶ Compare model to data
- ▶ Determine extent of past flooding

# Next Steps

## Create Drainage Model

- ▶ What does modeling the Wingra West watershed involve?
  - ▶ Watershed area: 1,757 acres (~ 2.75 square miles)
  - ▶ 17.6 miles of City-owned storm sewer
  - ▶ 2.25 miles of City-owned major drainage-ways (open channels)
  - ▶ 7 major stormwater detention basins / ponds
  - ▶ About 300 commercial/industrial lots, ~2,250 residential lots
  - ▶ ~ 900 inlets

# Next Steps

## Create Drainage Model

- ▶ What you might see in the watershed



USGS station (left) and stage gauge (above).  
Photos courtesy of Bill Selbig (USGS).



Above: surveyor in the field. Photo  
courtesy of Amber Lefers (AE2S).

# Next Steps

Create  
Drainage  
Model

Identify  
Flooding  
Impacts

Develop  
Engineering  
Solutions


Prioritize  
& Budget

- ▶ See how well existing storm sewer system meets goals



Commerce Drive near  
Plaza Drive, Madison, WI

# Next Steps



Create  
Drainage  
Model


Identify  
Flooding  
Impacts

Develop  
Engineering  
Solutions

Prioritize  
& Budget

- ▶ Must be holistic
- ▶ Not “move the problem elsewhere”
- ▶ Account for climate change
  - ▶ Look at **trending increases** in storm frequency and intensity
- ▶ Consider long term maintenance needs
- ▶ Provide benefits relative to cost

# Next Steps



Create  
Drainage  
Model


Identify  
Flooding  
Impacts

Develop  
Engineering  
Solutions

Prioritize  
& Budget

- ▶ Must be holistic
- ▶ Not “move the problem elsewhere”
- ▶ Account for climate change
  - ▶ Look at **trending increases** in storm frequency and intensity
- ▶ Consider long term maintenance needs
- ▶ Provide benefits relative to cost

# Next Steps



Create  
Drainage  
Model

Identify  
Flooding  
Impacts

Develop  
Engineering  
Solutions

Prioritize  
& Budget

- ▶ Must be holistic
- ▶ Not “move the problem elsewhere”
- ▶ Account for climate change
  - ▶ Look at **trending increases** in storm frequency and intensity
- ▶ Consider long term maintenance needs
- ▶ Provide benefits relative to cost

# Next Steps

Create  
Drainage  
Model


Identify  
Flooding  
Impacts

Develop  
Engineering  
Solutions

Prioritize  
& Budget

- ▶ Must be holistic
- ▶ Not “move the problem elsewhere”
- ▶ Account for climate change
  - ▶ Look at **trending increases** in storm frequency and intensity
- ▶ Consider long term maintenance needs
- ▶ Provide benefits relative to cost

# Next Steps



Create  
Drainage  
Model

Identify  
Flooding  
Impacts

Develop  
Engineering  
Solutions

Prioritize  
& Budget

- ▶ Must be holistic
- ▶ Not “move the problem elsewhere”
- ▶ Account for climate change
  - ▶ Look at **trending increases** in storm frequency and intensity
- ▶ Consider long term maintenance needs
- ▶ Provide benefits relative to cost

# Next Steps

**Create  
Drainage  
Model**

**Identify  
Flooding  
Impacts**

**Develop  
Engineering  
Solutions**


**Prioritize  
& Budget**

What are some general options?

- ▶ Improve pipe and/or inlet capacity
- ▶ Safe overflow paths
- ▶ Reroute flow
- ▶ Increase storage / detention
- ▶ Flood-proof buildings
- ▶ Local landscaping / grading
- ▶ Solutions on private property to structures or land



# Next Steps



Create  
Drainage  
Model

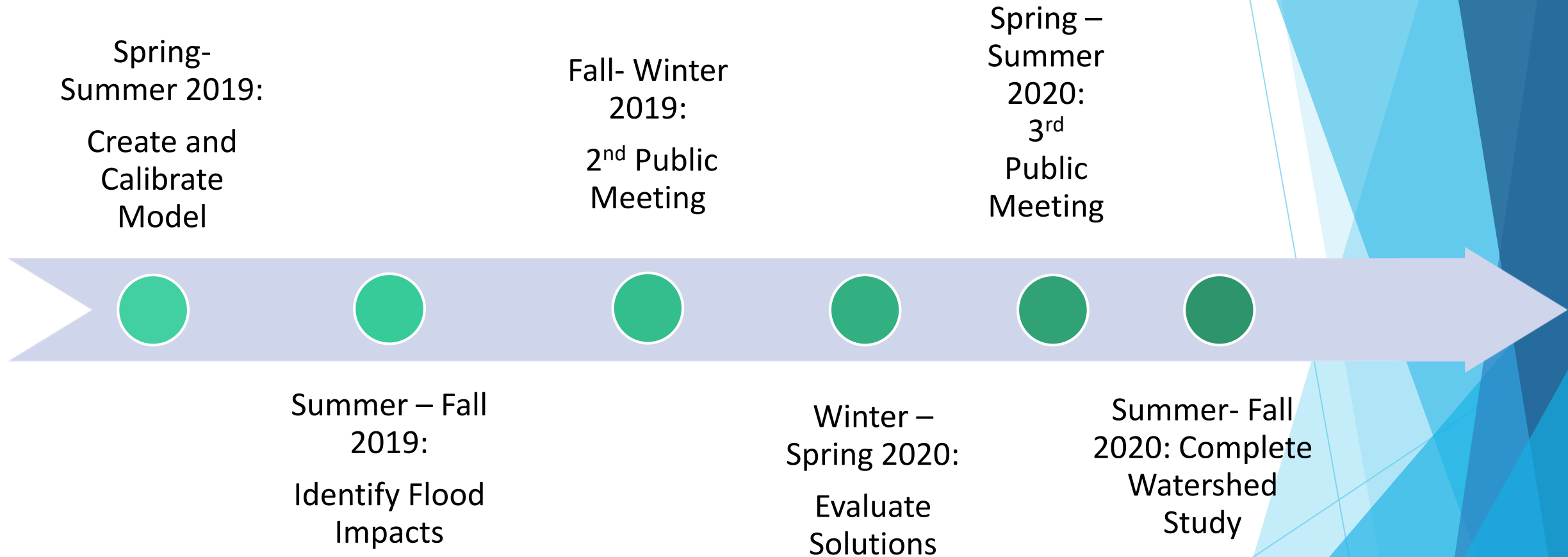
Identify  
Flooding  
Impacts

Develop  
Engineering  
Solutions

**Prioritize  
& Budget**

- ▶ Improvements require time and money
  - ▶ Some solutions are long-term, sustained community efforts (green infrastructure)
  - ▶ Some solutions are discrete, high capital-cost projects (box culverts, pond, etc.)
- ▶ Solutions prioritized based on:
  - ▶ Frequency, severity and damage (cost-benefit)
  - ▶ Emergency response routes
  - ▶ Areas with other projects scheduled (road repair, etc.)
  - ▶ Within a Neighborhood Resource Team area

# Next Steps



# Property Owner Responsibilities

- ▶ Self-report Online Survey: document and share data during rain events

▶ [www.cityofmadison.com/flooding](http://www.cityofmadison.com/flooding)

***WE NEED YOU TO REPORT ON-LINE TO INFORM OUR STUDY!***

- ▶ Understand local drainage and how to protect your property
- ▶ Install backflow preventers and sump pumps
- ▶ Consider supplemental insurance
- ▶ Focus group participation

**Report Flooding & Damage**

Please use this form to report **Non-Emergency** issues only.

- **Emergencies:** If you or someone else is at risk or needs help, or if the maintenance item is an emergency condition, please call **911**.
- **Stormwater Emergencies:** If clogged grates or blocked waterways are causing an imminent threat to your property, please call (608) 266-4430

Please use this form to report flooding and damage to private property or public lands, including City parks. This form is for reporting flooding in the **City of Madison** only.

We will use this information to prioritize repairs and to plan for upgrades to our City stormwater infrastructure to reduce flooding damage in the future. Thank you for your time.

**Flooding Type**

Flooding Type \* *required*

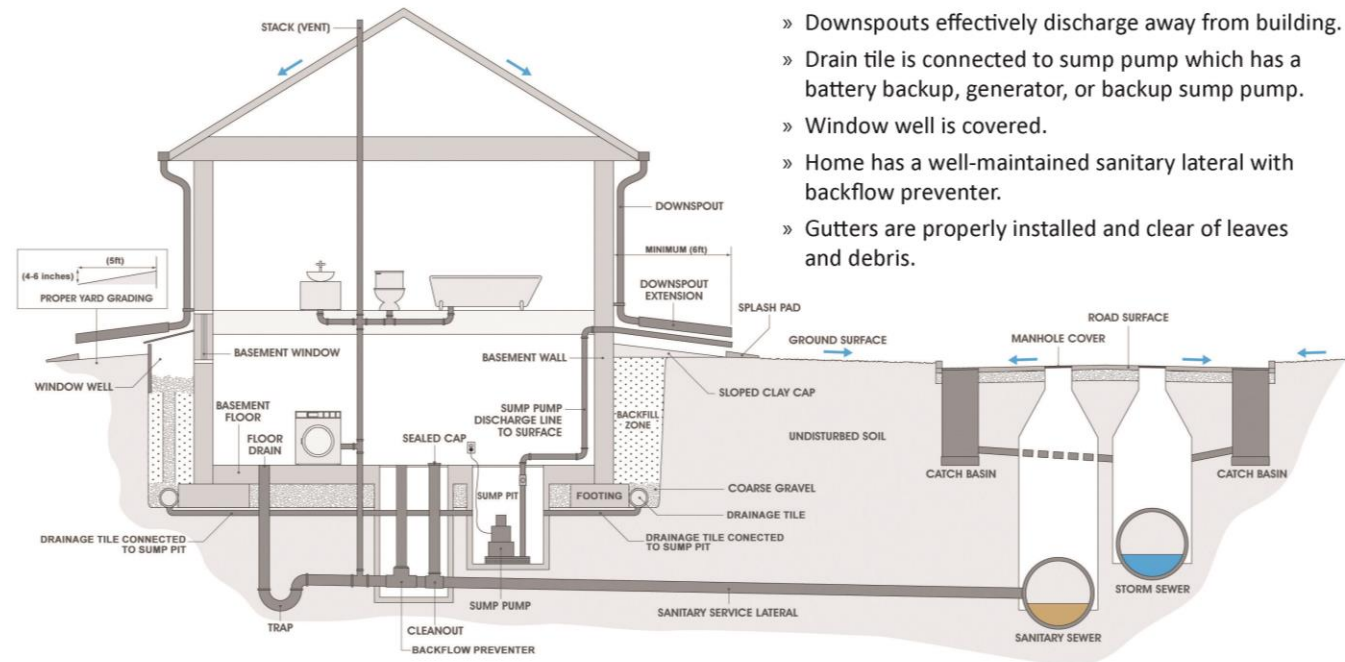
- ☐ Home or Building (Private Property)
- ☐ Street Flooding
- ☐ Park, Bike Path, Pond or Greenway, or Other

**NEXT**

# Property Owner Responsibilities

- ▶ Self-report Online Survey
- ▶ Understand local drainage and how to protect your property
  - ▶ [www.cityofmadison.com/floodprotection](http://www.cityofmadison.com/floodprotection)
- ▶ Install backflow preventers and sump pumps
- ▶ Consider supplemental insurance
- ▶ Focus group participation

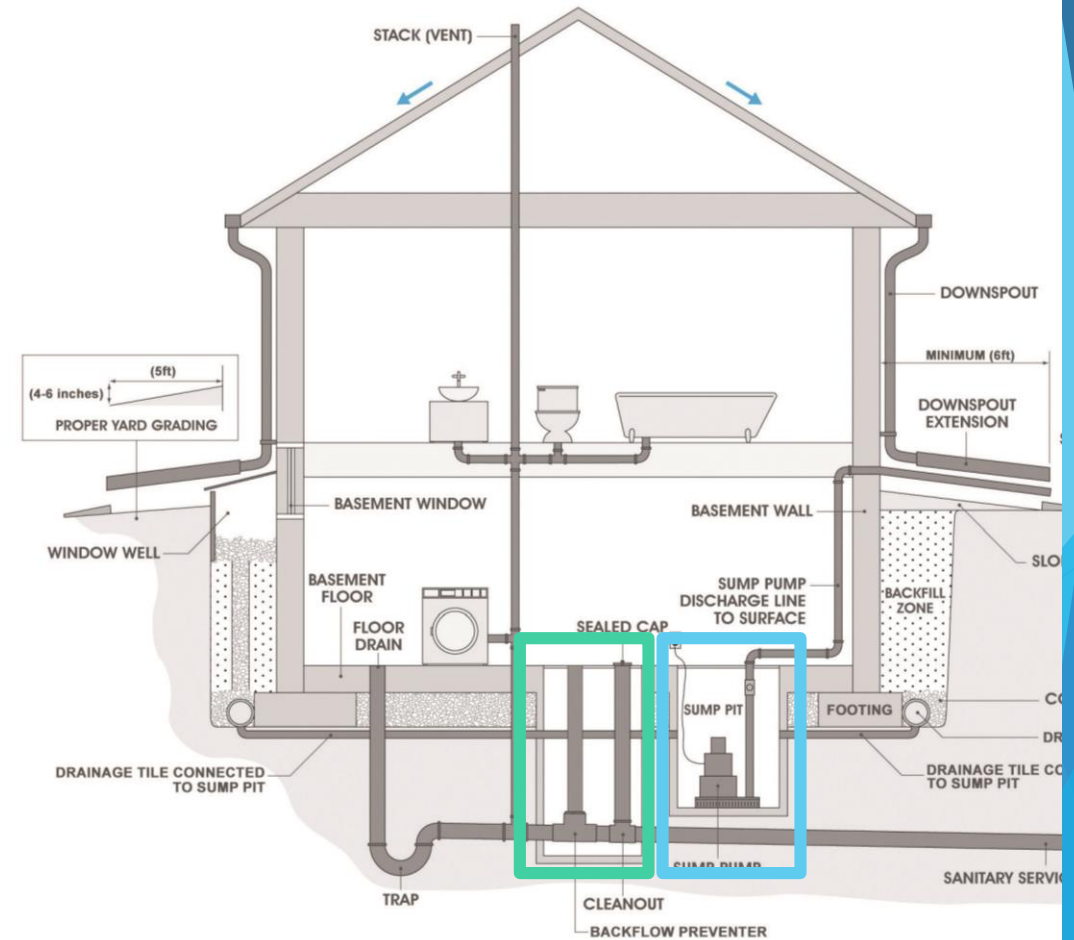
## Good Flood Prevention



- » Foundation, wall, and sewer are in good condition.
- » Ground sloped away from the building.
- » Downspouts effectively discharge away from building.
- » Drain tile is connected to sump pump which has a battery backup, generator, or backup sump pump.
- » Window well is covered.
- » Home has a well-maintained sanitary lateral with backflow preventer.
- » Gutters are properly installed and clear of leaves and debris.

# Property Owner Responsibilities

- ▶ Self-report Online Survey
- ▶ Understand local drainage and how to protect your property
- ▶ **Install backflow preventers and sump pumps**
- ▶ Consider supplemental insurance
- ▶ Focus group participation



# Property Owner Responsibilities

- ▶ Self-report Online Survey
- ▶ Understand local drainage and how to protect your property
- ▶ Install backflow preventers and sump pumps
- ▶ Consider supplemental insurance – **contact your private insurance agent for more information**
- ▶ Focus group participation

# Property Owner Responsibilities

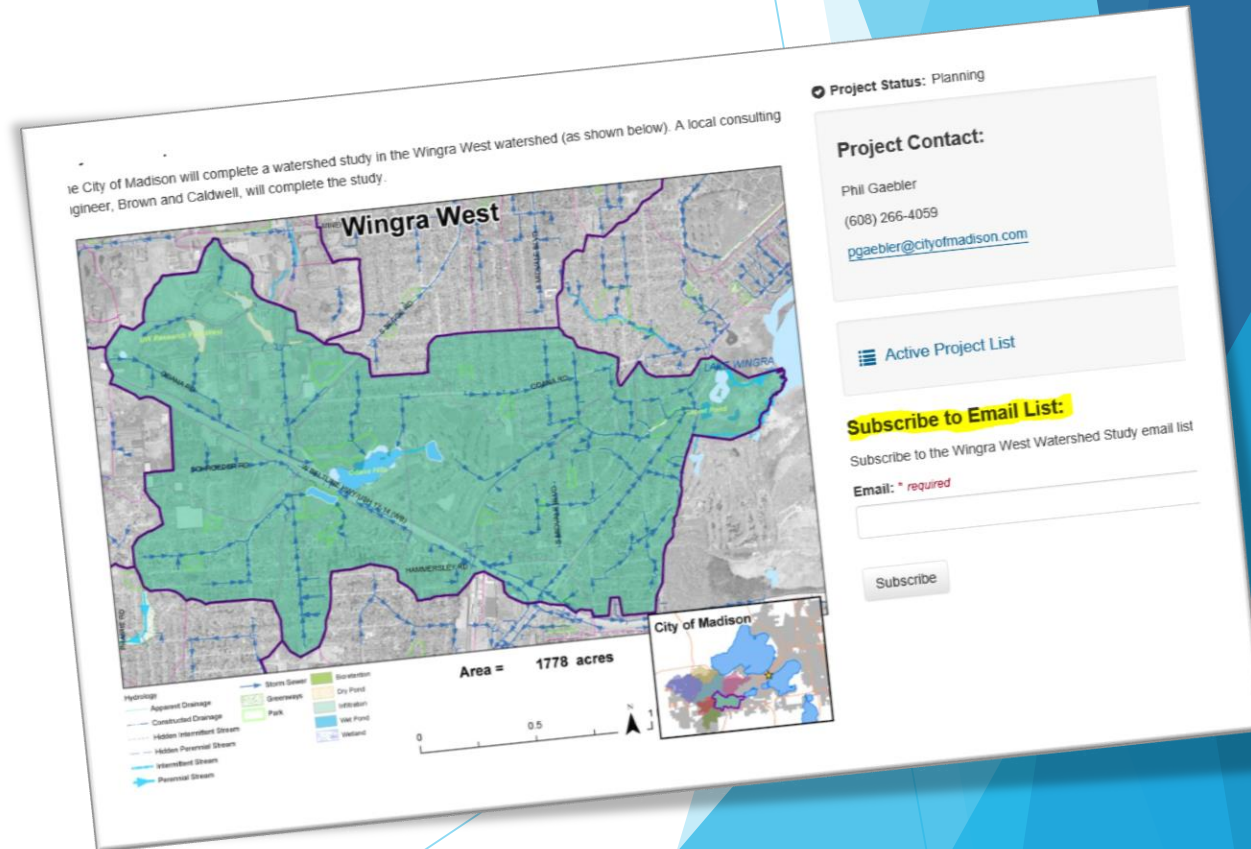
- ▶ Self-report Online Survey
- ▶ Understand local drainage and how to protect your property
- ▶ Install backflow preventers and sump pumps
- ▶ Consider supplemental insurance
- ▶ Focus group participation: for regional issues that affect more than one person

# Property Owner Responsibilities

- ▶ **Be a good neighbor!** Understand how your water could have negative impacts on your neighbor's property.
- ▶ Install rain gardens and/or rain barrels etc.
- ▶ **Have a plan** to protect yourself during a flash flood warning.
- ▶ Become a better steward of your watershed.
  - ▶ Adopt an Inlet
  - ▶ Remove leaves from the street
  - ▶ <http://www.ripple-effects.com/>

# How to Stay Involved

- ▶ [www.cityofmadison.com/flooding](http://www.cityofmadison.com/flooding)
  - ▶ Report Flooding Survey
  - ▶ Individual Watershed Studies Pages
    - ▶ Sign up for updates!
  - ▶ How you can prevent flooding at your home



# Project Recovery

- ▶ A community-based program providing outreach, crisis counseling, and support to communities impacted by severe storms, flooding, landslides, straight-line winds, and tornadoes in the summer of 2018.
- ▶ Contact Project Recovery
  - ▶ By phone: 1-844-260-7029 (toll free)
  - ▶ By email:  
[ProjectRecovery@couleecap.org](mailto:ProjectRecovery@couleecap.org)



*A Resource for Wisconsin Flood and Severe Storm Victims*

# Next PIM

- ▶ Fall – Winter of 2019
  - ▶ Present stormwater and flood model findings
  - ▶ Specific to the watershed
  - ▶ Refine data and model
  - ▶ Use as a ‘fact check’ with residents

# Contact Information

## City Contact Info:

Spring Harbor	Jojo O'Brien	jobrien@cityofmadison.com	(608) 266-9721
Strickers/Mendota	Lauren Striegl	Lstriegl@cityofmadison.com	(608) 266-4094
West Wingra	Phil Gaebler	pgaebler@cityofmadison.com	(608) 266-4059
Madison Pheasant Branch	Sally Swenson	sswenson@cityofmadison.com	(608) 266-4862



# Questions and Answers

The background of the slide features abstract, overlapping geometric shapes in various shades of blue, ranging from light sky blue to deep navy blue. These shapes are primarily located on the right side and bottom of the slide, creating a modern, dynamic aesthetic. The left side of the slide is mostly white, providing a clean space for the text.