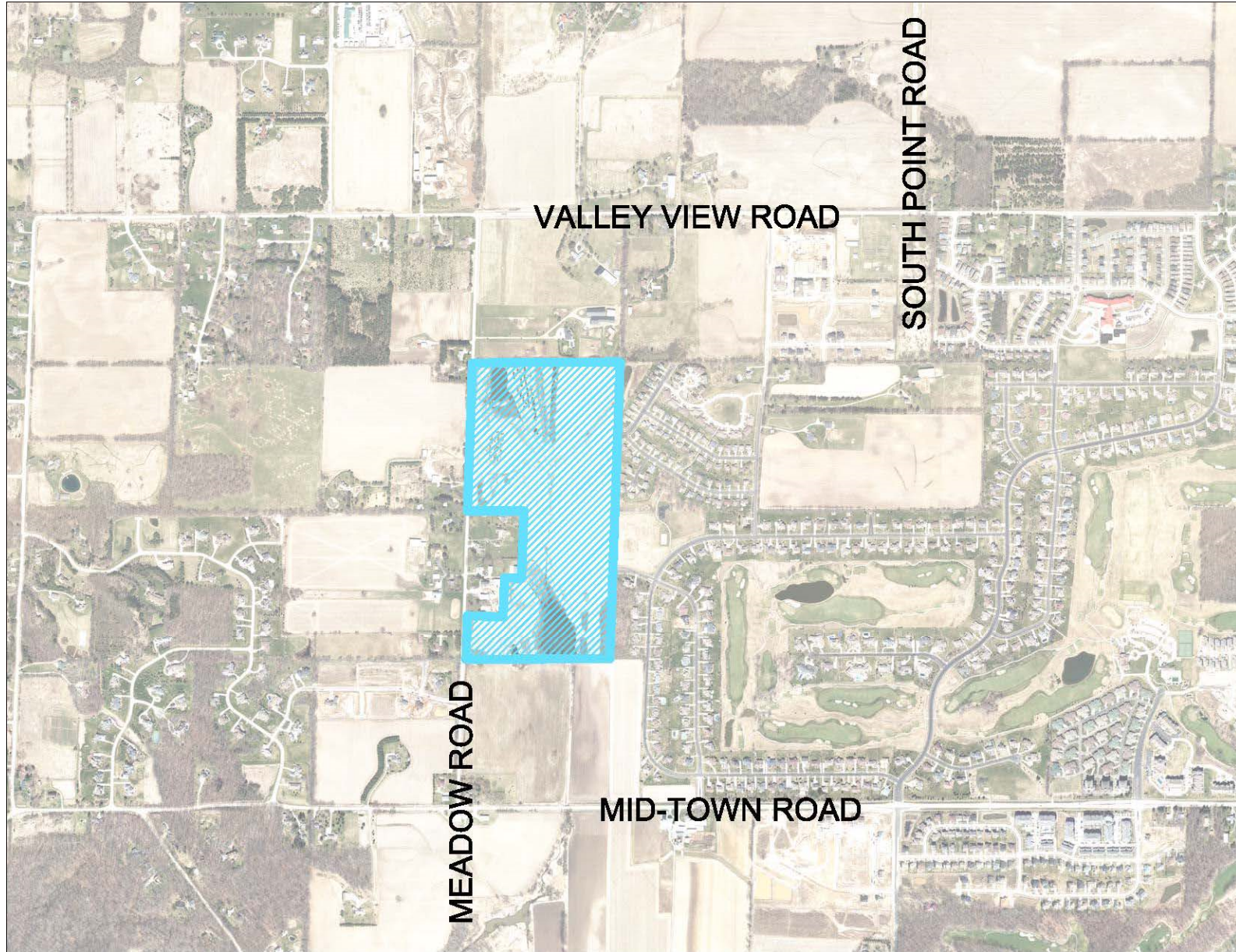


# LOWER BADGER MILL CREEK LAND DIVISION



## LOWER BADGER MILL CREEK LAND DIVISION

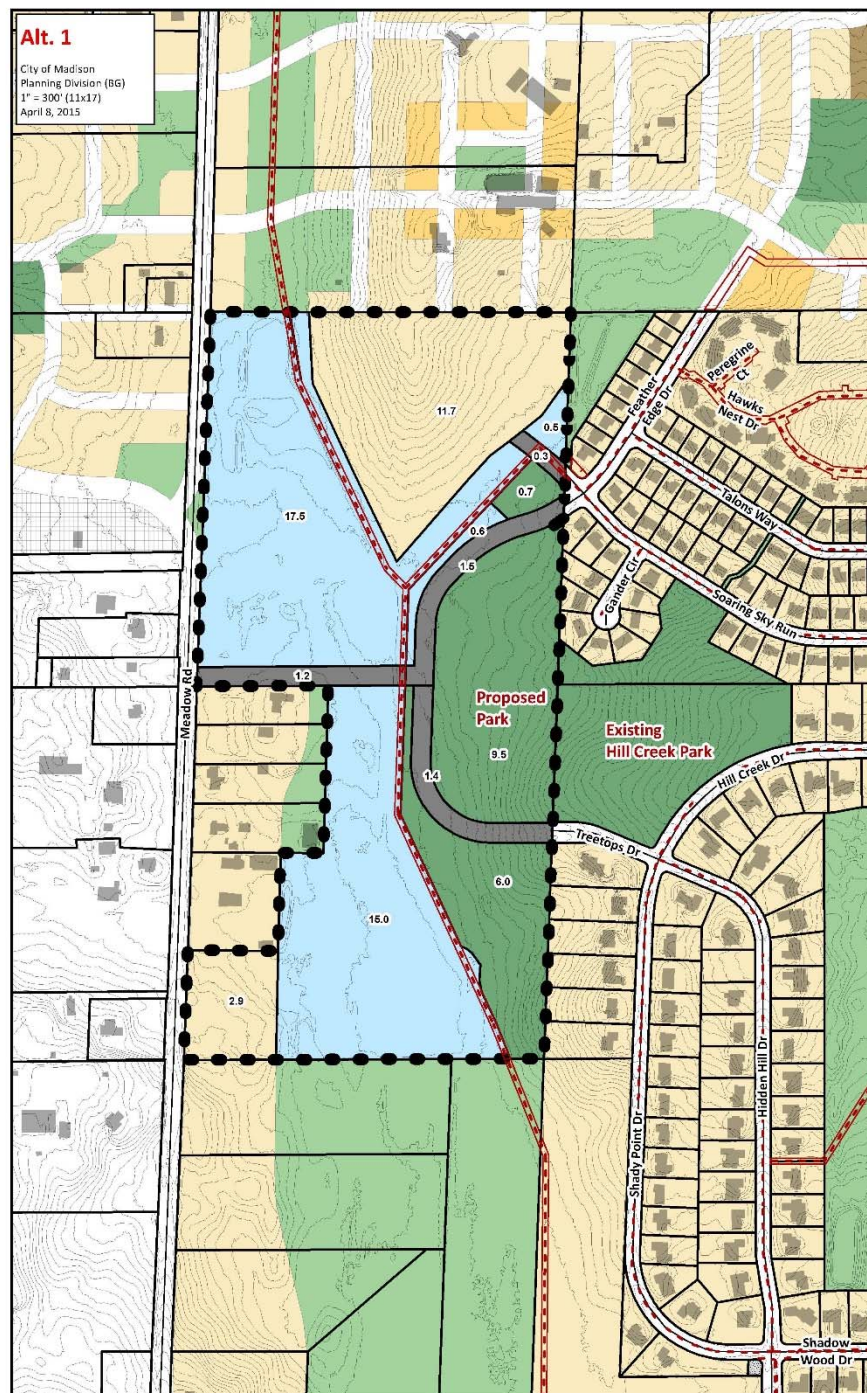
- Why the City Purchased the Land
- General Overview of New Parcels
- Neighborhood Plans
- Expansion of Hill Creek Park
- Stormwater Ponds
- Street and Bike Path
- Meeting Schedules

## LOWER BADGER MILL CREEK LAND DIVISION

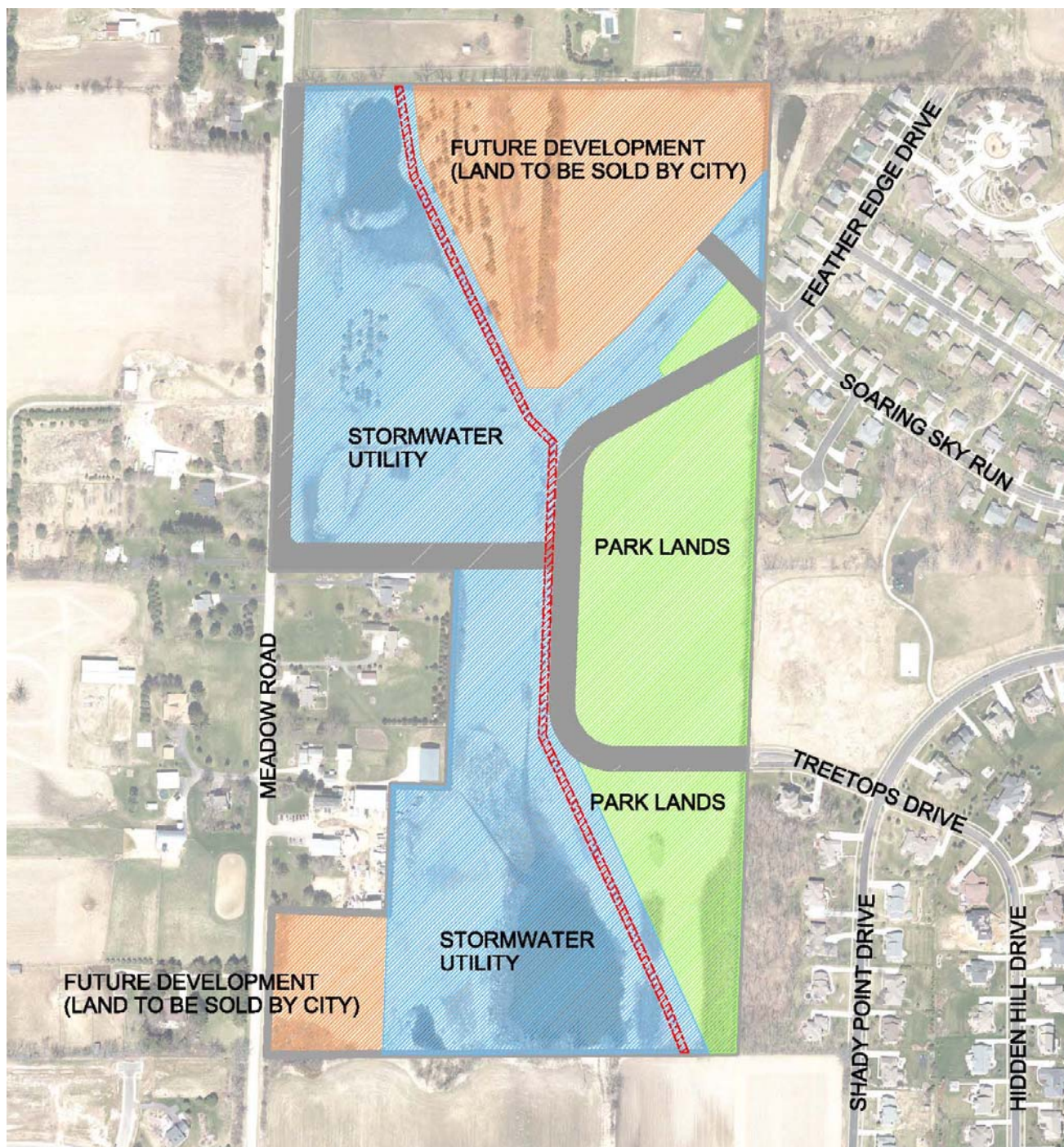
- Why the City Purchased the Land
- General Overview of New Parcels
- Neighborhood Plans
- Expansion of Hill Creek Park
- Stormwater Ponds
- Street and Bike Path
- Meeting Schedules



City of Madison  
Planning Division (BG)  
1" = 300' (11x17)  
April 8, 2015



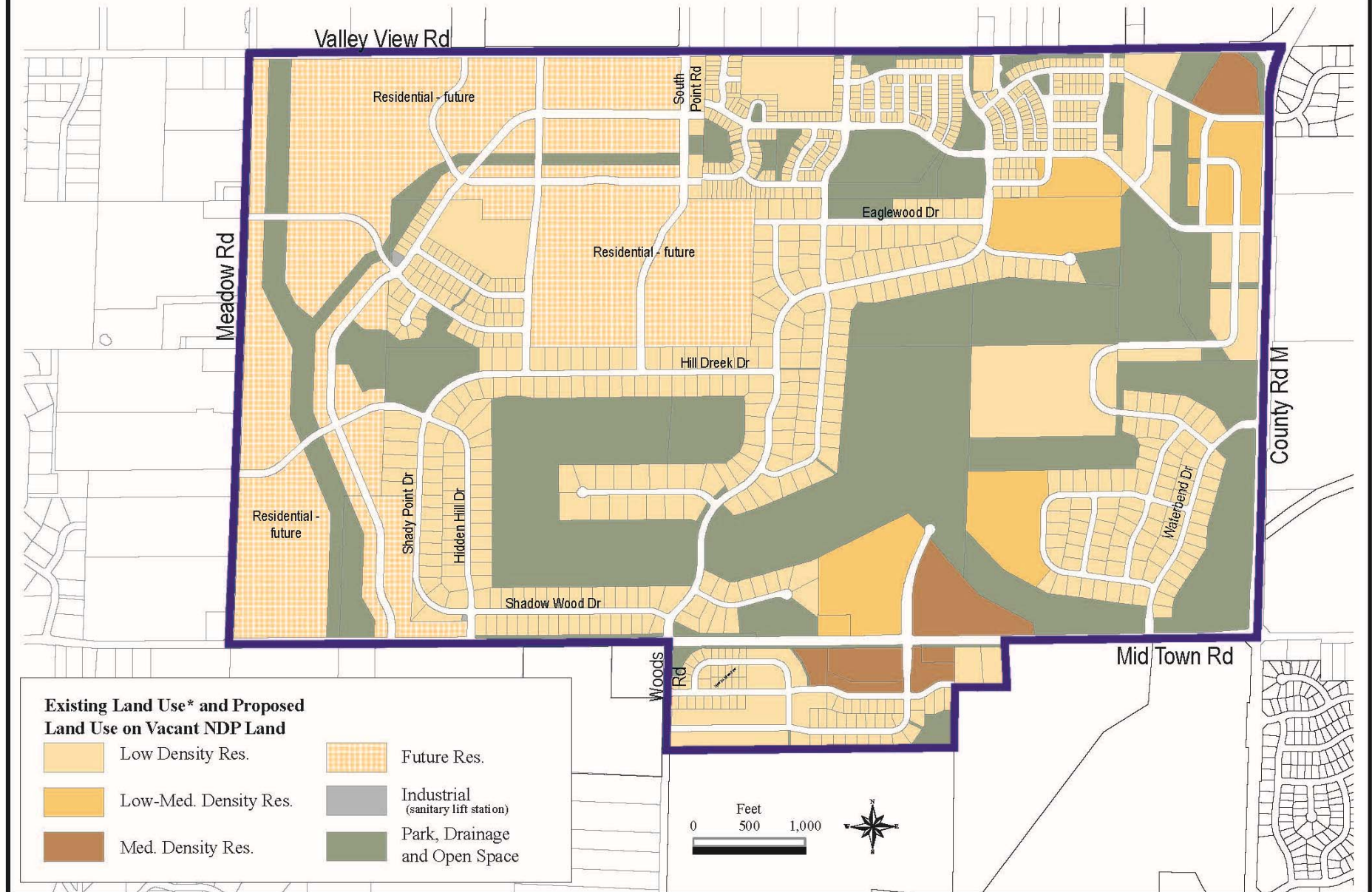


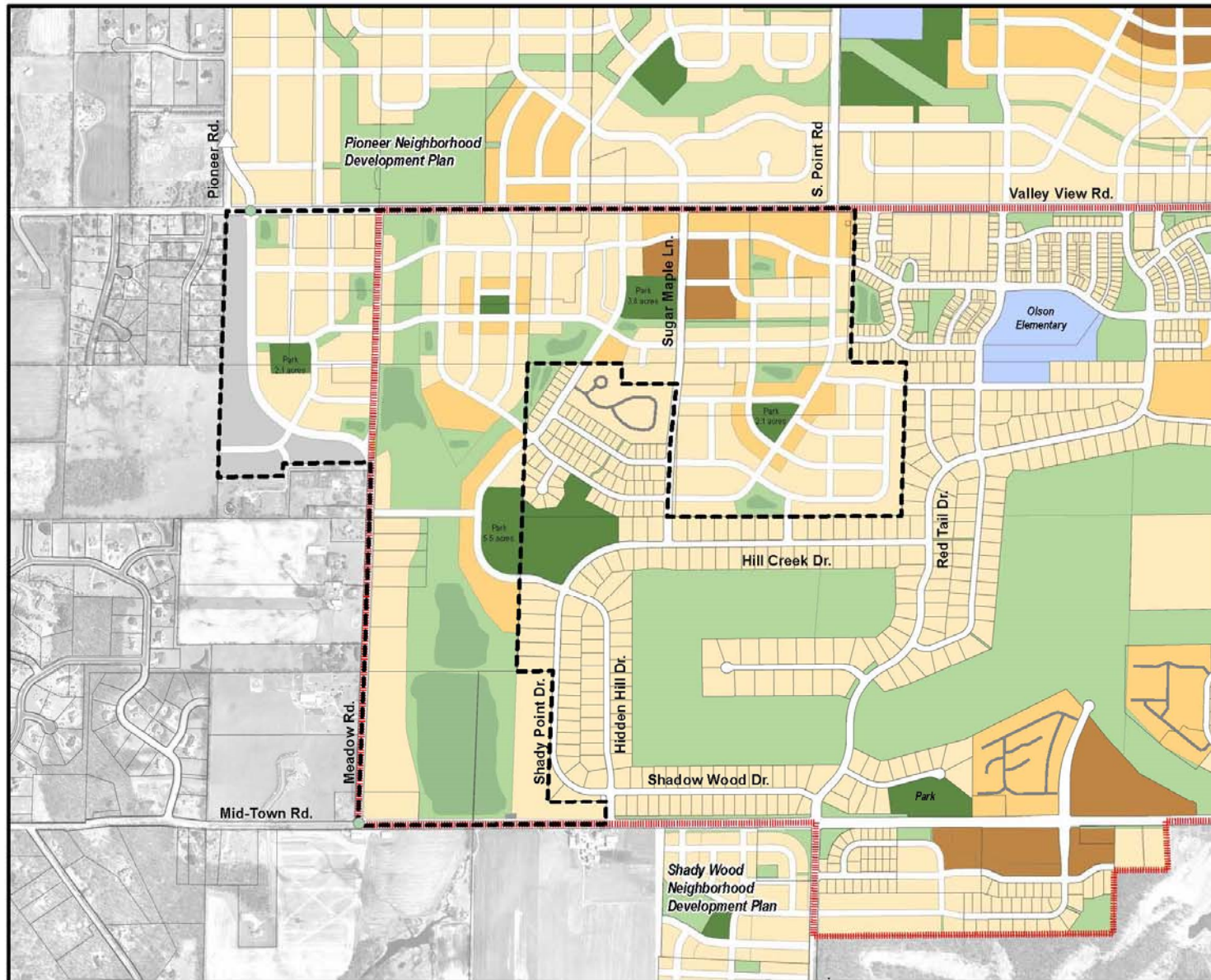




# Mid-Town Neighborhood Development Plan

As Adopted August 1999, Amended May 2001, July 2004  
and \*implemented through subdivision and zoning approvals





## Map 5: Land Use and Street Plan

Amendment to the Mid-Town  
Neighborhood Development Plan  
August 2010

-  Mid-Town NDP Area
-  Amendment Area
-  Lands to Remain  
in the Town of Middleton

### Recommended Land Use

-  Low Density Residential (Housing Mix 1)  
(4-8 units/acre)
-  Low-Medium Density Res. (Housing Mix 2)  
(8-15 units/acre)
-  Medium Density Res. (Housing Mix 3)  
(16-25 units/acre)
-  Utilities
-  Parks
-  Other Open Space and  
Stormwater Management
-  Conceptual Stormwater  
Detention Location



City of Madison Planning Division





## Map 6: Pedestrian-Bicycle Facilities

Amendment to the Mid-Town  
Neighborhood Development Plan  
August 2010



### Recommended Pedestrian-Bicycle Facilities

- On-Street Bicycle Lane
- Off-Street Path



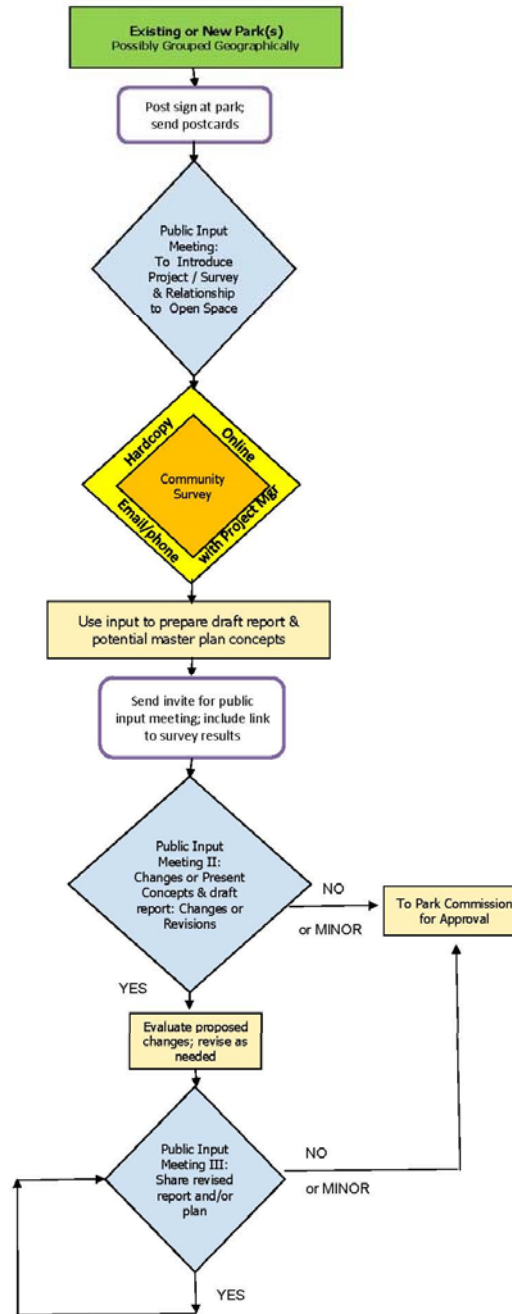


# LOWER BADGER MILL CREEK LAND DIVISION

- Why the City Purchased the Land
- General Overview of New Parcels
- Neighborhood Plans
- **Expansion of Hill Creek Park**
- Stormwater Ponds
- Street and Bike Path
- Meeting Schedules



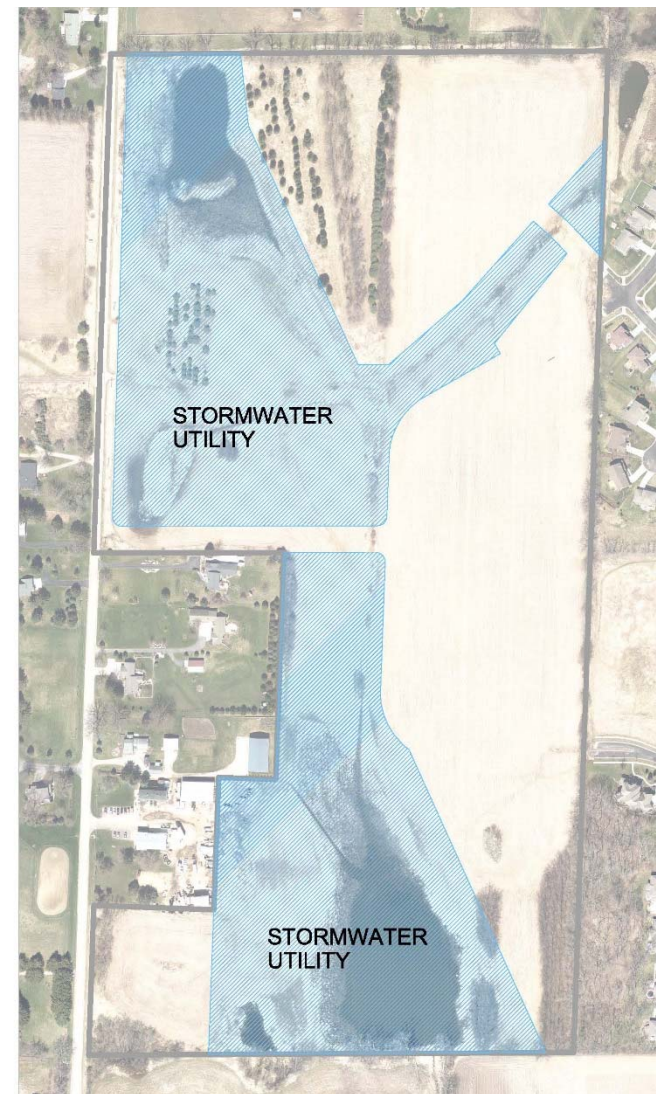
## Parks Master Plan Process





# LOWER BADGER MILL CREEK LAND DIVISION

- Why the City Purchased the Land
- General Overview of New Parcels
- Neighborhood Plans
- **Expansion of Hill Creek Park**
- Stormwater Ponds
- Street and Bike Path
- Meeting Schedules









# LOWER BADGER MILL CREEK LAND DIVISION

- Why the City Purchased the Land
- General Overview of New Parcels
- Neighborhood Plans
- Expansion of Hill Creek Park
- Stormwater Ponds
- **Street and Bike Path**
- Meeting Schedules



## LOWER BADGER MILL CREEK LAND DIVISION

- Why the City Purchased the Land
- General Overview of New Parcels
- Neighborhood Plans
- Expansion of Hill Creek Park
- Stormwater Ponds
- Street and Bike Path
- **Meeting Schedules**