

Permanent Shelter Development Update



Public Information Meeting

May 17, 2023

Thank you for attending. We will begin shortly...

1904 Bartillon Drive

- The City of Madison and Dane County are collaborating to develop a new, purpose built shelter to primarily serve men experiencing homelessness.
- Click here to watch first [Public Information Meeting held April 18, 2022.](#)



Agenda

- Welcome
- Overview of Project and Community Engagement
- Pre-Design Drafts
- Question & Answer

Contact Information & Resources

Project Leads:

- Jonathan Evans- Engineering, City of Madison;
Email: jevans@cityofmadison.com
- Linette Rhodes- Community Development Division, City of Madison
 - Email: lrhodes@cityofmadison.com

Panelists May 17, 2023

- Jon Evans-Engineering, City of Madison
- Jim O’Keefe- Community Development Director, City of Madison
- Linette Rhodes- Community Development Supervisor, City of Madison
- Melissa Mennig-Housing Access & Affordability, Dane County
- Kim Sutter- Director of Services, Porchlight, Inc
- Project Website: <https://www.cityofmadison.com/engineering/projects/bartillon-shelter>
- Sign-up for project email updates on the website

Common Council Action To Date

April 2022

- Authorized the use of 1904 Bartillon Dr as site for a permanent shelter facility

Aug 2022

- Approved the selection of Dimension IV-Madison and team to provide architectural and engineering design services.

Oct 2022

- Approved the selection of Porchlight Inc as the operator of the purpose built shelter.
- Project team began seeking community feedback on design and services (Trauma- Informed Design Assessment)

Community Engagement

Connecting with the community



Who did we engage with?

- **People with Lived Experience**

- Past experience of homelessness, current guests of shelters, those who have chosen not to access shelter

- **Service Providers**

- Service providers and other stakeholders who provided their perspectives regarding service needs

- **Neighborhoods and Businesses near Bartillon Drive**

- gas stations, child and adult care centers, car dealerships, bars, etc.

How were they engaged?

- **Surveys:** A survey was created with a QR code and made available to the public. The survey had 190 responses and was categorized for people with lived experience of homelessness (27 responses), service providers (113 responses), and neighbors (50 responses).
 - **Door to Door:** Businesses in the Bartillon area were contacted and invited to give feedback about the new shelter via participation in the survey.
 - **Email:** Surveys were sent out via email through the Homeless Services Consortium listserv. The listserv has approximately 500 members who were urged to share the survey among their networks.

Trauma Informed Design Assessment

- Shopworks Architecture
- Interviews, Focus Groups, Surveys
 - Staff and guests of Zeier Road, Dairy Drive, Beacon, Salvation Army shelter locations
 - Other service providers
 - Other individuals accessing homeless services
- A total of 145 people
 - 77 service providers
 - 68 people accessing services
- [Trauma Informed Design Report](#)

Themes



- ✓ Safety
- ✓ Services
- ✓ Design





Safety Concerns of Shelter Users

- Top 3 answers
 - People who have been **drinking or using drugs** who may cause trouble
 - Theft of person's **belongings**
 - People who have untreated **mental health issues** who may cause trouble

Slide 12

MM12

Who's perspective is this? Shelter guests? Neighbor? Providers? Maybe title this "Safety Concerns of Guests"

Mennig, Melissa, 3/22/2023

MM13

i would also get rid of the words "cause trouble"

Mennig, Melissa, 3/22/2023

Security Features Requested By Users

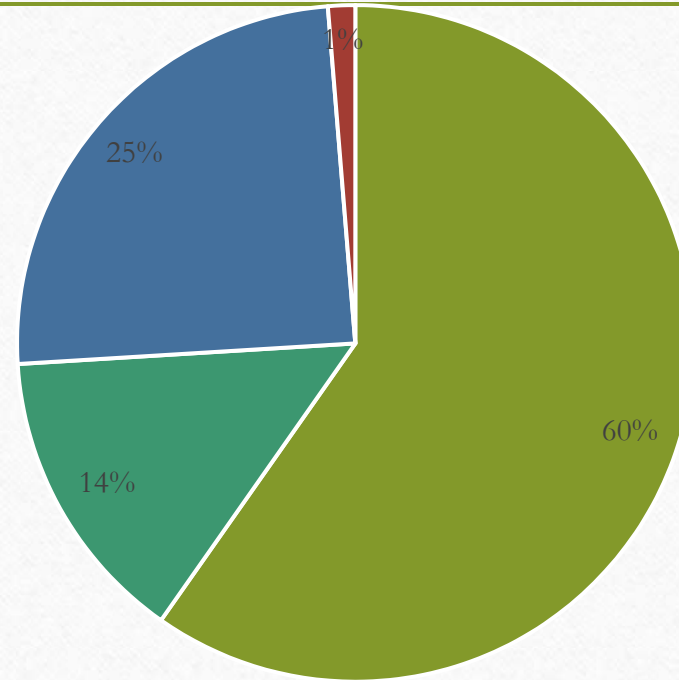
- Top 3 responses
 - **Storage** for personal items
 - More **privacy** in sleeping spaces
 - **Security staff**

Neighborhood Relations- Safety Features

- How important are the following safety features for our shelter guests and the community?
- Top 3 responses
 - **Contact information** for shelter and outreach staff
 - Increased **lighting**
 - Surveillance **cameras**

Community Acceptance

- Have shelter guests expressed concerns of being accepted by the community around the shelter?



■ Yes ■ No ■ Not applicable ■ Prefer not to answer



Services

Services in High Demand

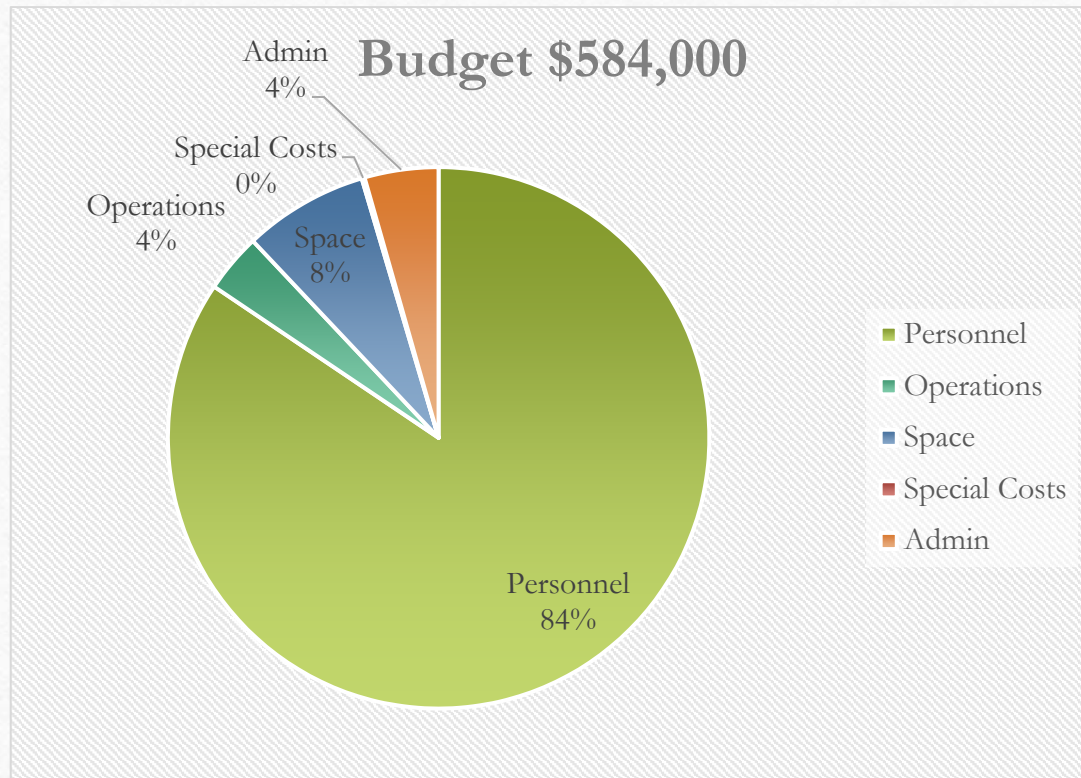
- Service Providers top responses for onsite services in highest demand:
 - **Housing**
 - **Behavioral Health**
 - **Case Management**
- People with lived experience top responses for most helpful onsite services:
 - **Transportation** services
 - Help finding **housing**
 - Someone to talk to about **mental health & basic health care** issues

Current Engagement Partners About Services

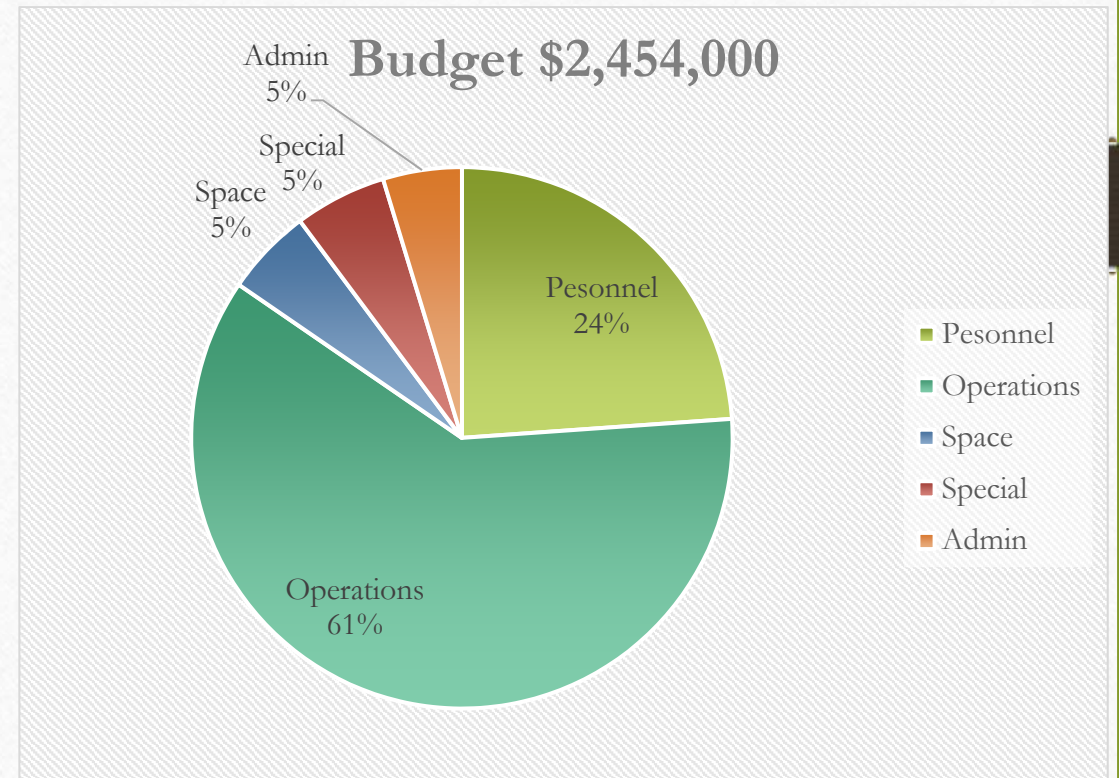
- Porchlight, Inc
- Nurse Disrupted, Inc
- Madison Street Medicine
- Kabba Recovery Services
- Catalyst for Change
- The Beacon
- City Community Development Division
- Dane County Housing Access & Affordability
- Dane County Human Services
- Homeless Services Board of Directors Liaison
- Dimension IV Madison Design Group
- City Engineering

Budget Considerations

2019 Expenses (pre-pandemic)



2022 Expenses



A man in a white shirt is sitting at a desk in an office, looking at a smartphone. A laptop and glasses are on the desk. The word "Design" is overlaid in large black text.

Design

Council & County Board Action To Date

Nov 2021

- Adopted 2022 Capital Budget, between City of Madison and Dane County authorized up to \$9 million for capital. [\$6 million City of Madison/ \$3 million Dane County]

Nov 2022

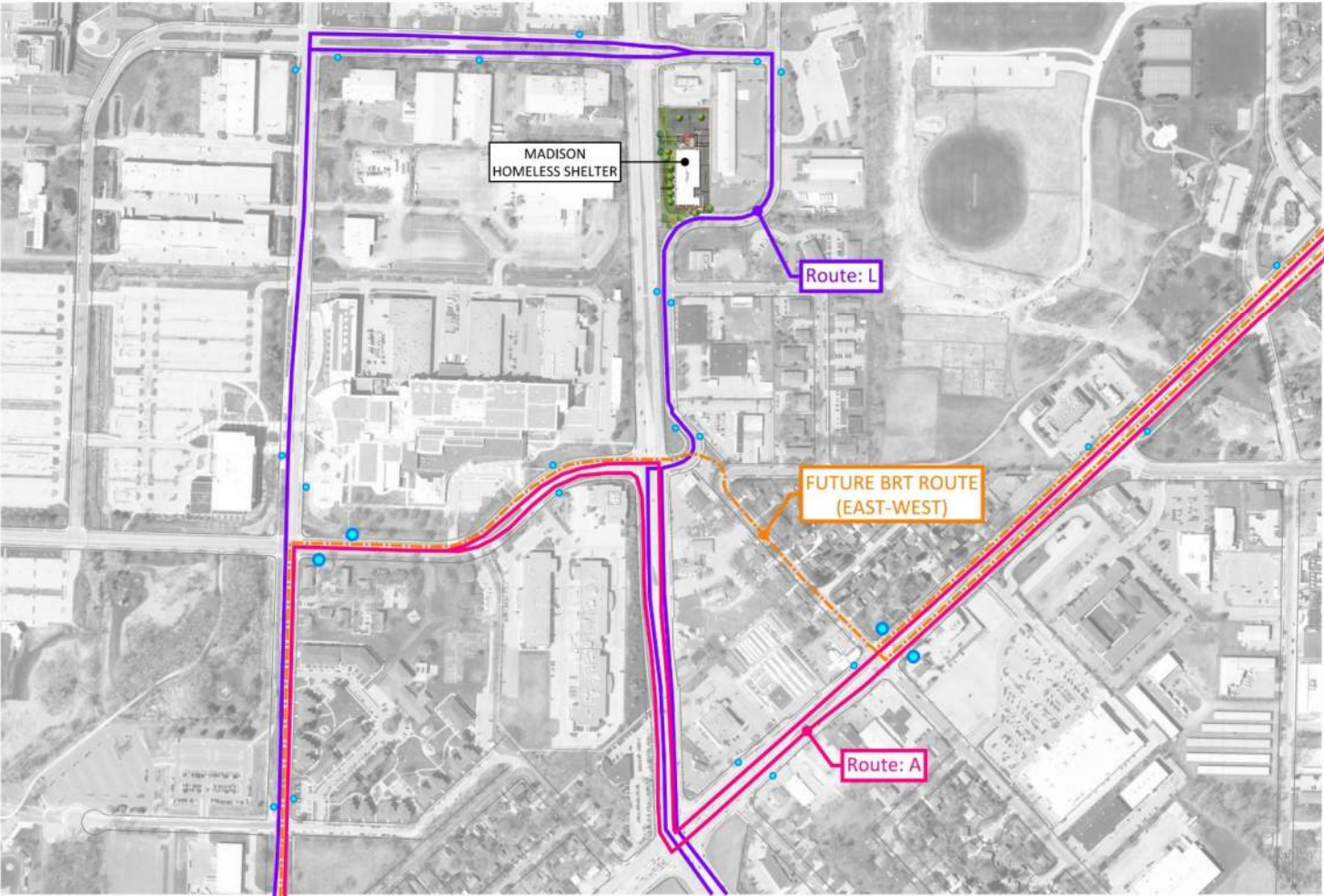
- Adopted 2023 Capital Budget, adding \$11 million from City of Madison, Dane County and federal funds. Securing up to \$21 million for capital costs

Design Recommendations From Survey

Top 4 responses:

- A **warm safe** space that offers some **privacy**
- Ensure a safe space for **storage** of belongings
- Space for services focused on **housing** and **behavioral health**
- **Safety** features inside and outside of the building

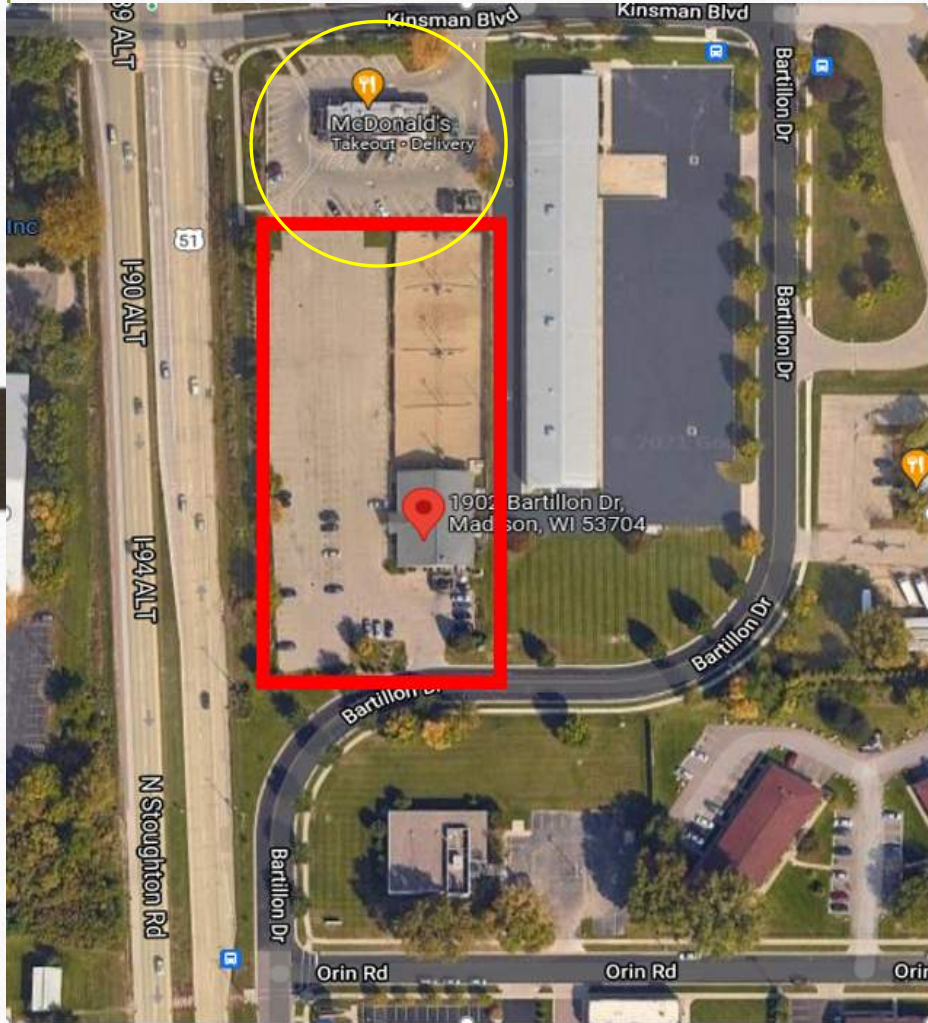
Design Considerations



- LEGEND**
- Bus Stop
 - Bus/BRT Stop
 - Route L
 - Route A
 - Future BRT Route (East / West)



Design Considerations



- Located in a Transit Overlay District (TOD)
 - Requires at least 2 stories and affects set backs
- Sustainability is a Priority
 - Focus on reducing operating costs and achieving City goals
- Purchase of McDonalds site
 - Allows for future phases and better site access
- Percentage for Arts Ordinance
 - Requires 1% of budget to support public art at site.

Other Design Considerations

- Sleeping pods for up to 250 clients
 - 5 sleeping areas supporting 30-50 beds
 - Smaller sleeping area for safety of clients
- Commercial kitchen
 - Brings food service in house vs catering
- Isolation and Quarantine Rooms
 - Replaces pay to stay options

Design Considerations

SHELTER
(INTAKE/LOBBY)
1,801 SF

HYGENE
(TOILETS/SHOWERS)
3,190 SF

HEALTH
395 SF

NUTRITION
5,770 SF

SHELTER
DAY USE
1,520 SF

OFFICE
1,612 SF

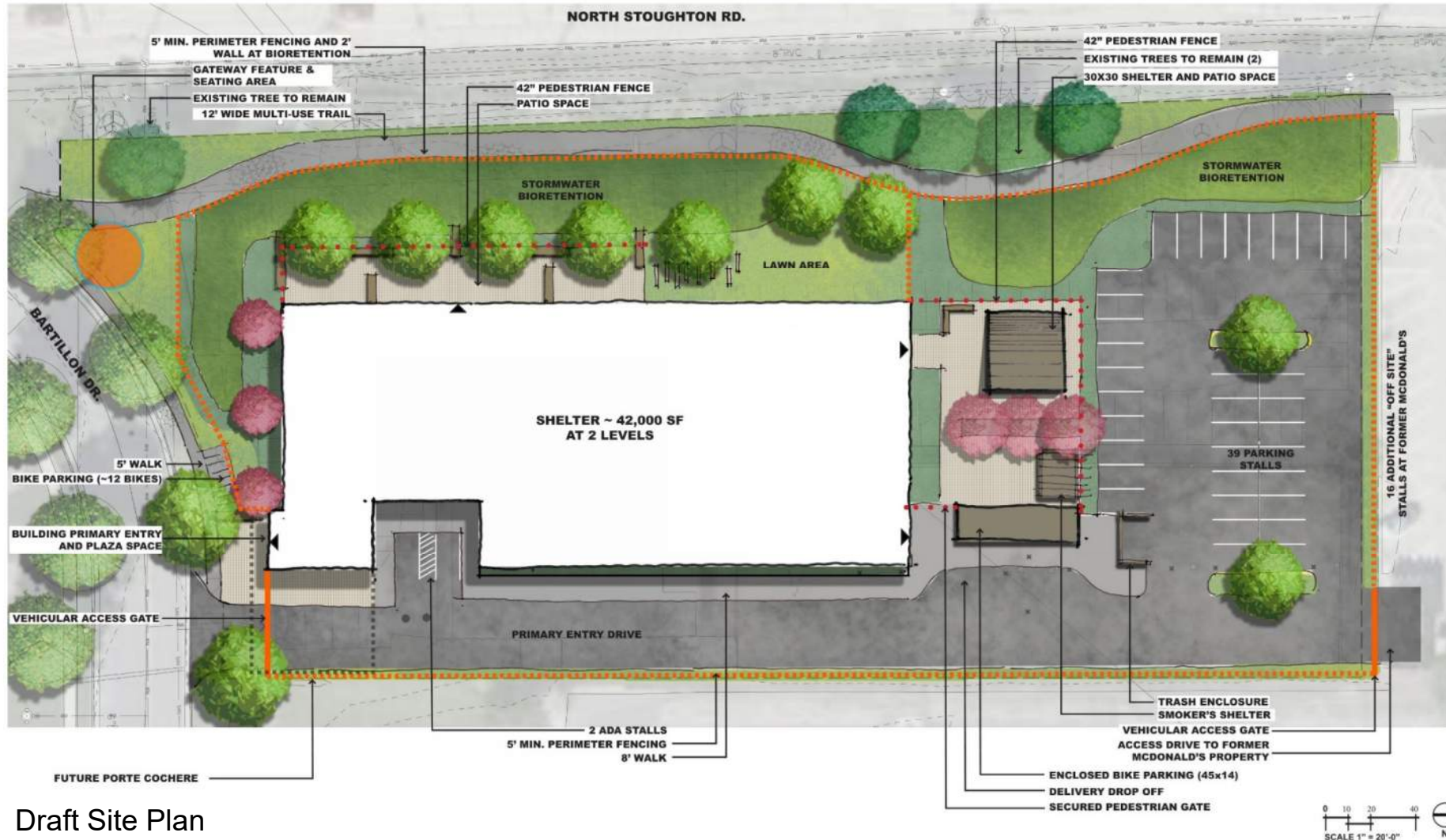
SHELTER BACK
OF HOUSE (BOH)
4,916 SF

SLEEPING
15,180 SF

CIRCULATION
3,840 SF SF

SUMMARY	SQUARE FOOTAGE	PERCENTAGE
Shelter (INTAKE, LOBBY)	1,801	5%
Hygiene	3,190	8%
Health	395	1%
Nutrition	5,770	15%
Sleeping	15,180	40%
Shelter - Day Use	1,520	4%
Office	1,612	4%
Shelter - BOH	4,916	13%
Circulation	3,840	10%
Total Net SF	38,224	100%
Efficiency	10%	
TOTAL Gross SF	42,046	

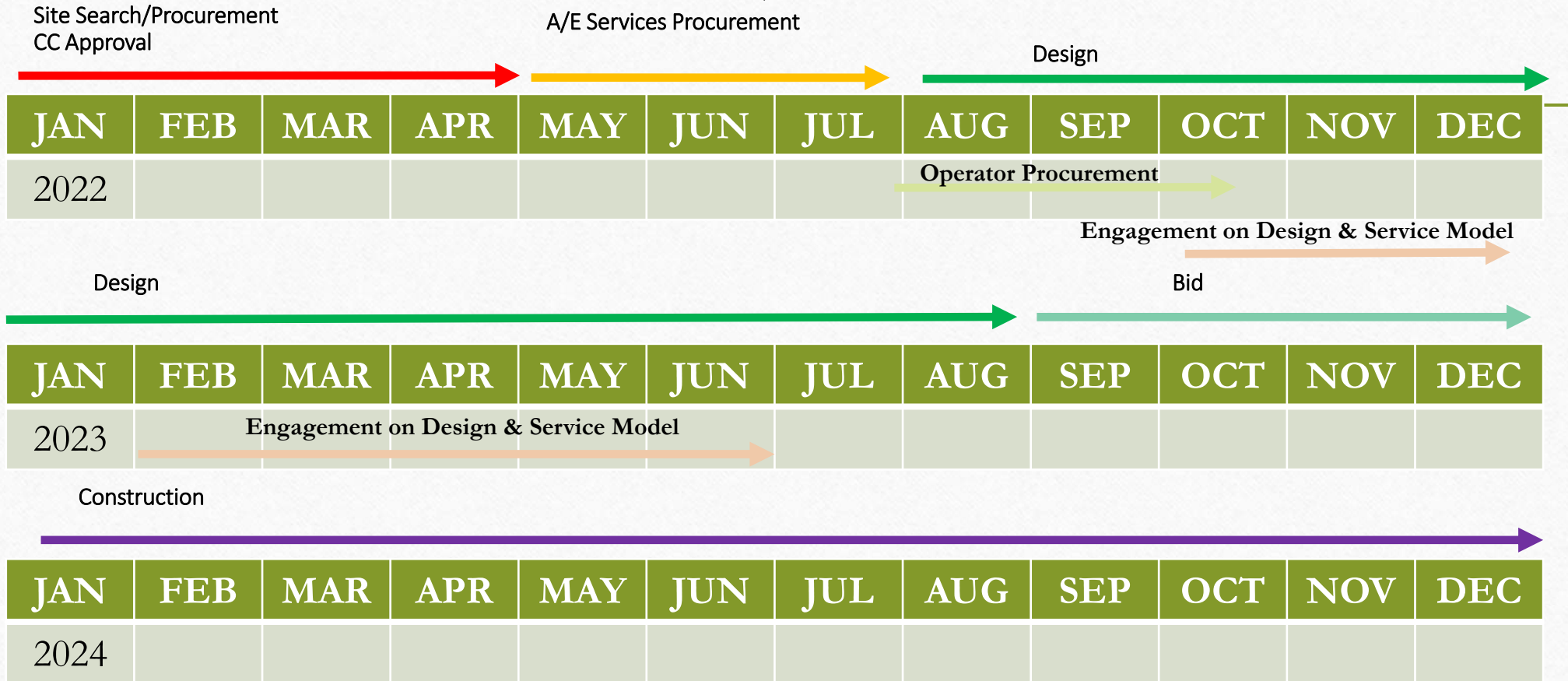
Design Considerations



Draft Site Plan

TENTATIVE

1904 Bartillon Project Schedule



PORCHLIGHT

BARTILLON SHELTER COMMUNITY MEETINGS – MAY 2023





PORCHLIGHT SERVICES

- ❖ Transitional program for Veterans
- ❖ Day shelter for individuals with mental illness





PORCHLIGHT SERVICES

- ❖ Transitional program for Veterans
- ❖ Day shelter for individuals with mental illness
- ❖ Eviction prevention program
- ❖ Supportive employment program
- ❖ Over 350 units of low-income housing





PORCHLIGHT SERVICES

- ❖ Transitional program for Veterans
 - ❖ Day shelter for individuals with mental illness
 - ❖ Eviction prevention program
 - ❖ Supportive employment program
 - ❖ Over 350 units of low-income housing
-
- ❖ Emergency overnight shelter for male-identified adults (currently at 2002 Zeier Rd)





PORCHLIGHT DROP-IN SHELTER

Porchlight Men's Drop-In Shelter | Before COVID

- ❖ Main provider of emergency overnight shelter for male-identified individuals in Dane County
- ❖ Started in winter 1984 in a church basement, expanded to three church basements around the Square
- ❖ Relied on 70+ volunteer groups to provide meals
- ❖ Served 1,000-1,200 guests per year, 50-170 per night
- ❖ One staff per shelter site, one case manager at main site
- ❖ 90-day limit, no intoxication, focus on crowd control





PORCHLIGHT DROP-IN SHELTER

Porchlight Men's Drop-In Shelter | During COVID

- ❖ Large congregate spaces to promote physical distancing
- ❖ Warner Park → First Street → Zeier Road (current)
- ❖ Individual catered meals
- ❖ Cleaning service, laundry vendor
- ❖ Policy changes that lower barriers for guests
 - ❖ Removing the 90-day limit
 - ❖ Allowing folks in under the influence of substances
 - ❖ Increasing staffing to reduce the focus on crowd control
- ❖ Currently serving 1,450 guests per year, 130-245 per night





PURPOSE-BUILT SHELTER

Lessons Learned from Temporary Shelters

- ❖ Increase privacy, decrease noise in congregate spaces
- ❖ Return to on-site meal service
- ❖ Keep positive new features
 - ❖ Beds off the floor
 - ❖ Shower stalls
 - ❖ Clean, uniform linens and towels
 - ❖ Separate spaces for isolation
 - ❖ On-site parking for guests, staff, vendors, and partners
 - ❖ Increased staffing levels, commensurate with utilization
- ❖ Maintain and expand on-site support services





COMMUNITY PARTNERSHIPS

Catalyst for Change → housing-focused case management services, direct street outreach referrals, Comprehensive Community Services (CCS)



Nurse Disrupted → on-demand telehealth services, kiosk equipment and maintenance

Madison Street Medicine → on-site physical health care, follow-up care, direct street outreach referrals



Kabba Recovery Services → on-site recovery groups, counseling, on-call crisis intervention services, staff training