

INTRODUCTIONS

Stormwater Utility

- Sally Swenson – *Pond Design*
- Janet Schmidt – *Principal Engineer*
- Lauren Striegl – *Stormwater Modeling & Project Engineer for Adjacent Projects*
- Caroline Burger – *Stormwater Modeling*

Streets

- Chris Petykowski – *Principal Engineer (Jim Wolfe)*

Parks

- Corey Stelljes – *Project Engineer for Hill Creek Park*
- Ann Freiwald – *Planning and Development Manager*

Planning

- Tim Parks - *Planner*

Alder

- Barbara Harrington-McKinney – *District 1*



TONIGHT'S DISCUSSION

- Project Purpose
- Hill Creek Park Expansion
- Proposed Streets
- Stormwater Ponds
- Project Phasing
- Questions

Photo Credit: Rick Miygawa

Revised Resolution RPC No. 892

Amending the Dane County Land Use and Transportation Plan and
Water Quality Plan by Revising the Central Urban Service Area Boundary and
Environmental Corridors to Include the Mid-Town Road Amendment
in the City of Madison and the Town of Middleton

WHEREAS, the Dane County Regional Planning Commission
has adopted a Land Use and Transportation Plan and Water Quality Plan

WHEREAS, said plans delineate urban service areas as amended

WHEREAS, the City of Madison has requested an addition to
the Mid-Town Road Amendment as a basis for that

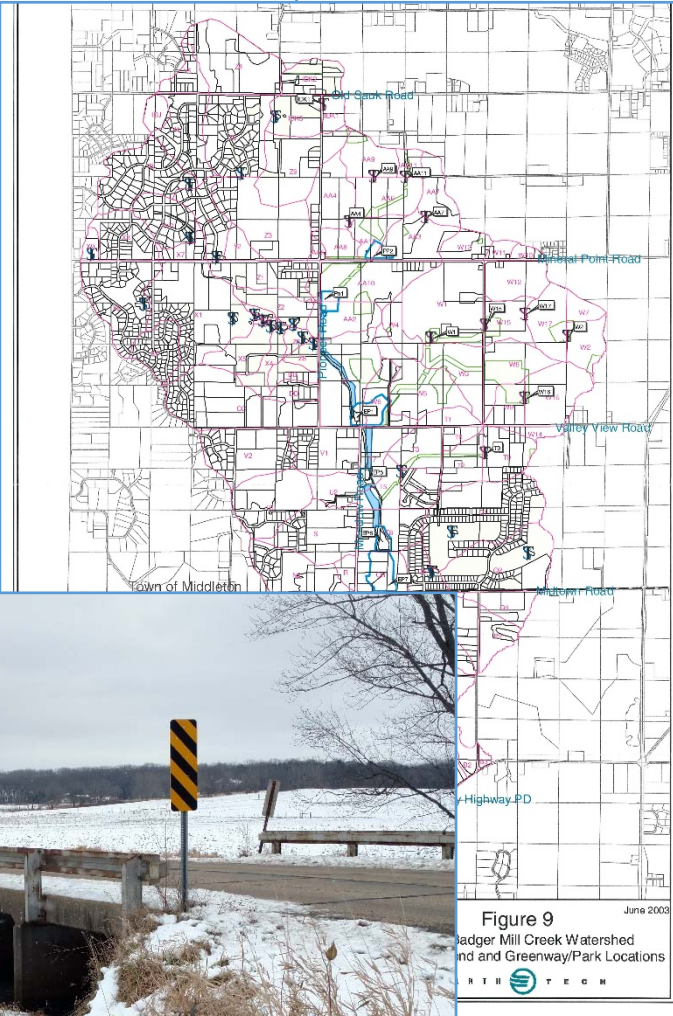
WHEREAS, a staff analysis of the proposed amendment has
found the amendment is generally consistent with adopted regional plans and
service area expansions,

NOW, THEREFORE, BE IT RESOLVED that in accordance with
208 of Public Law 92-500, the Dane County Regional Planning Commission
amend the Land Use and Transportation Plan and Water Quality Plan by revising
the Central Urban Service Area Boundary and Environmental Corridors in the City of Madison and
the attached map.

Approval of this amendment is based on the land use and urban
service area expansion of this amendment, and on the City of Madison meeting the following

- 1) Prior to commencing development in any part of the amendment
management plans must be submitted which outline the
proposed for the area to be developed, along with design
degree of control or mitigation of off-site water quality
stormwater plans should demonstrate that off-site water
gated to the maximum extent practicable.

2003 Stormwater Management Plan Map,
Showing Proposed Ponds and Greenways



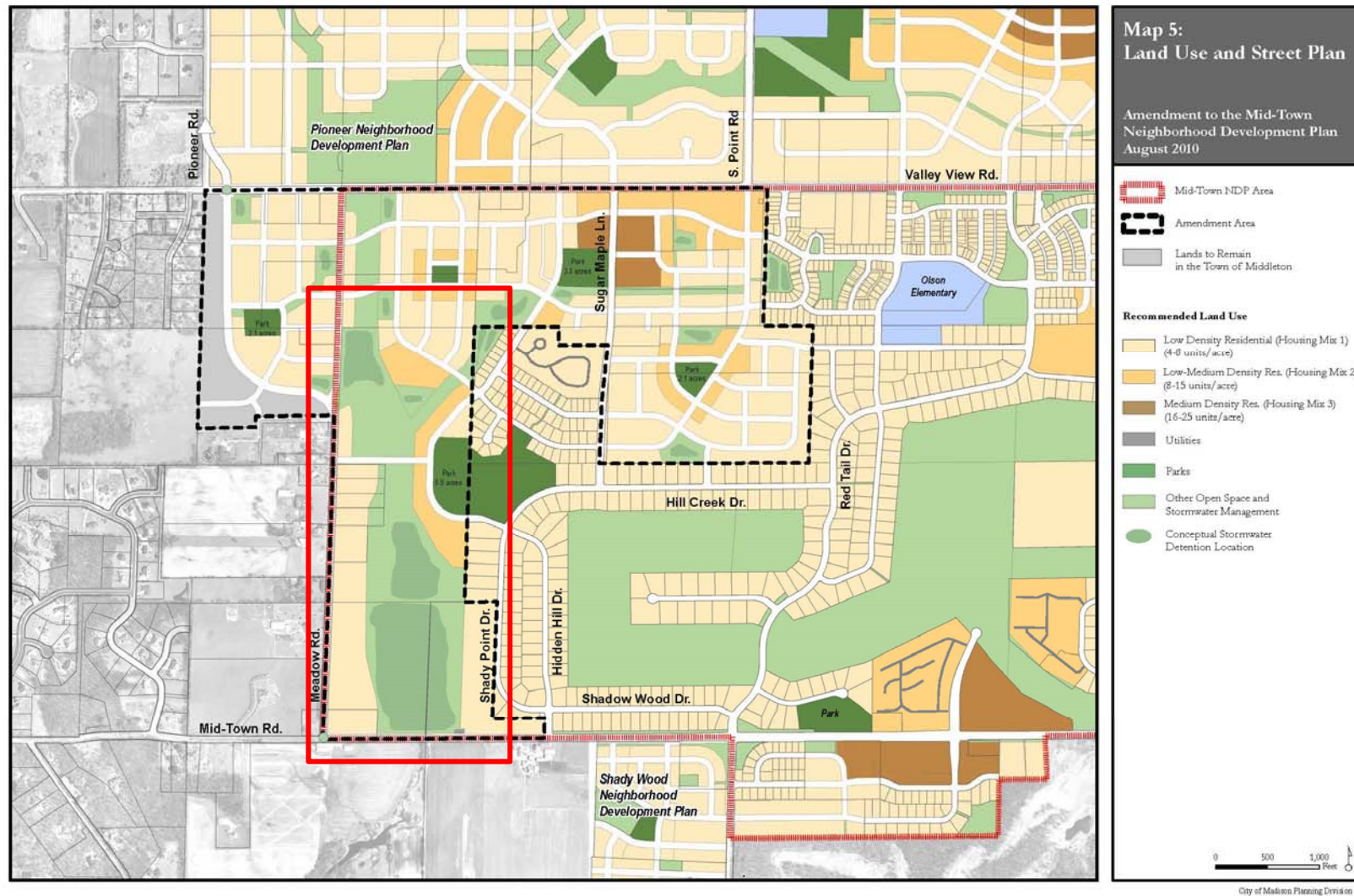
Dane County Regional Planning Commission
Resolution to Approve Mid-Town Road Amendment

PROJECT PURPOSE

- The City of Madison and the Town of Verona informally agreed to cap stormwater discharge at the municipal boundary, or Mid-Town Road Crossing.
- The 1999 Mid-Town Road Urban Service Area amendment required a comprehensive stormwater management plan
- The 2003, Earth Tech completed this stormwater management plan. The plan identified existing flow rates at Mid-Town Road and a method for managing storm runoff.

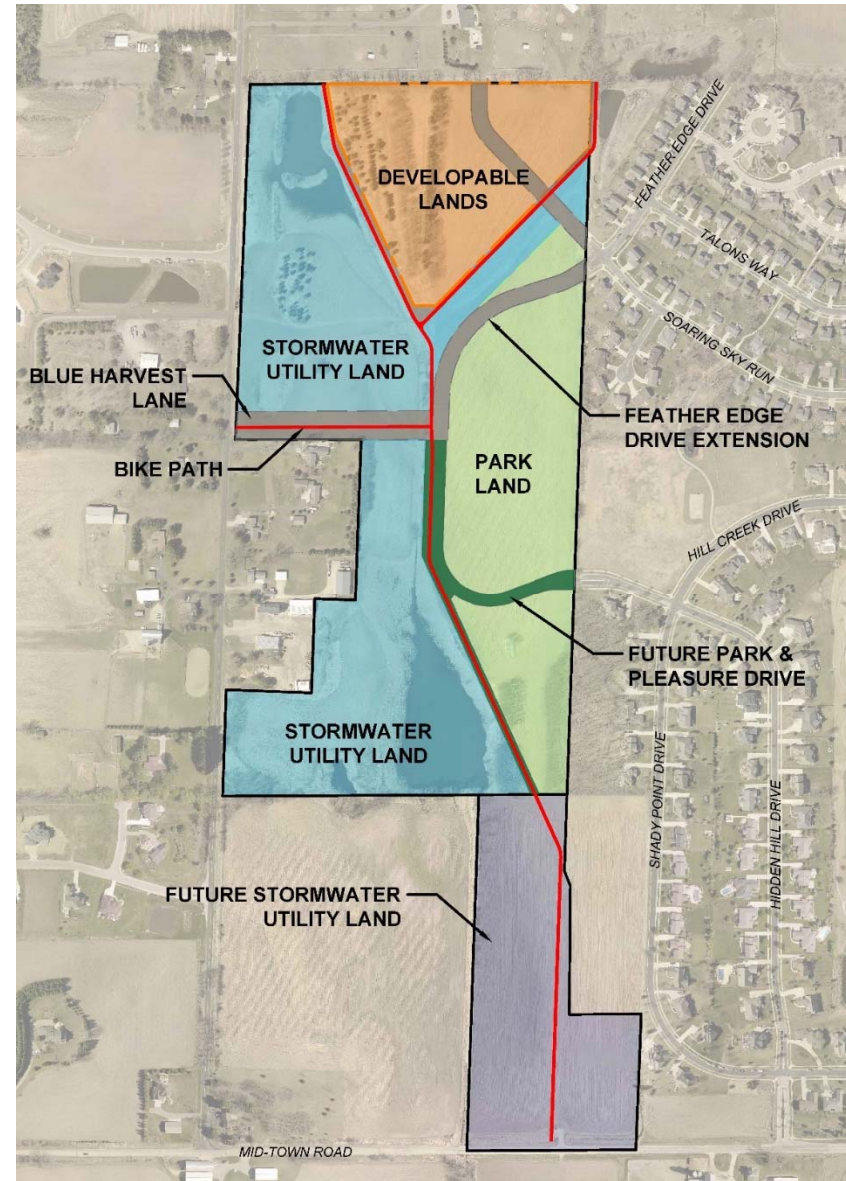


Lower Badger Mill Creek
Mid-Town Road Crossing



PROJECT PURPOSE

- The Mid-Town Neighborhood Plan was originally adopted in 1999. It was amended in 2001, 2004 and 2010.
- Neighborhood plans are used to direct development within the City.



PROJECT PURPOSE

- The approved Neighborhood Plan also directs City-led projects, such as park development, street layout, and stormwater management.

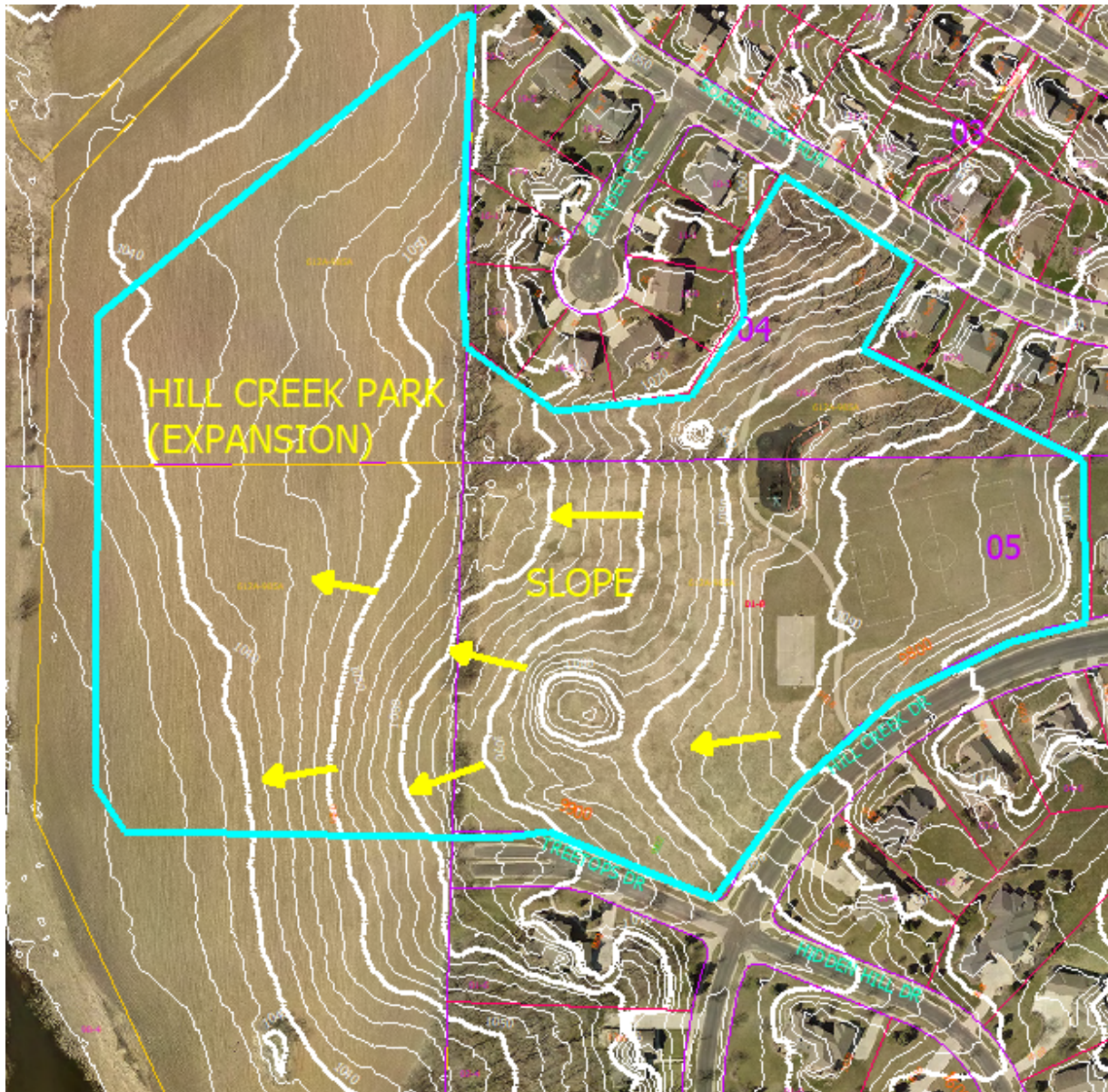
PARK LAND

Hill Creek Park

Existing amenities:

- Soccer/Softball field
- Playground
- Basketball
- Future shelter near playground





New and existing parkland Future Use

- Hillside Topo
- Not suitable for playfields
- Proposed new amenity in system
- Site identified in MadBAT Network (Preliminary)
- Off-Road Bike trails
- Natural Plantings/Open Space
- Future trail building project separate from stormwater
- Informational only
- Future PIM for trails
- Funding

DRAFT MadBATS Concept Plan

Legend

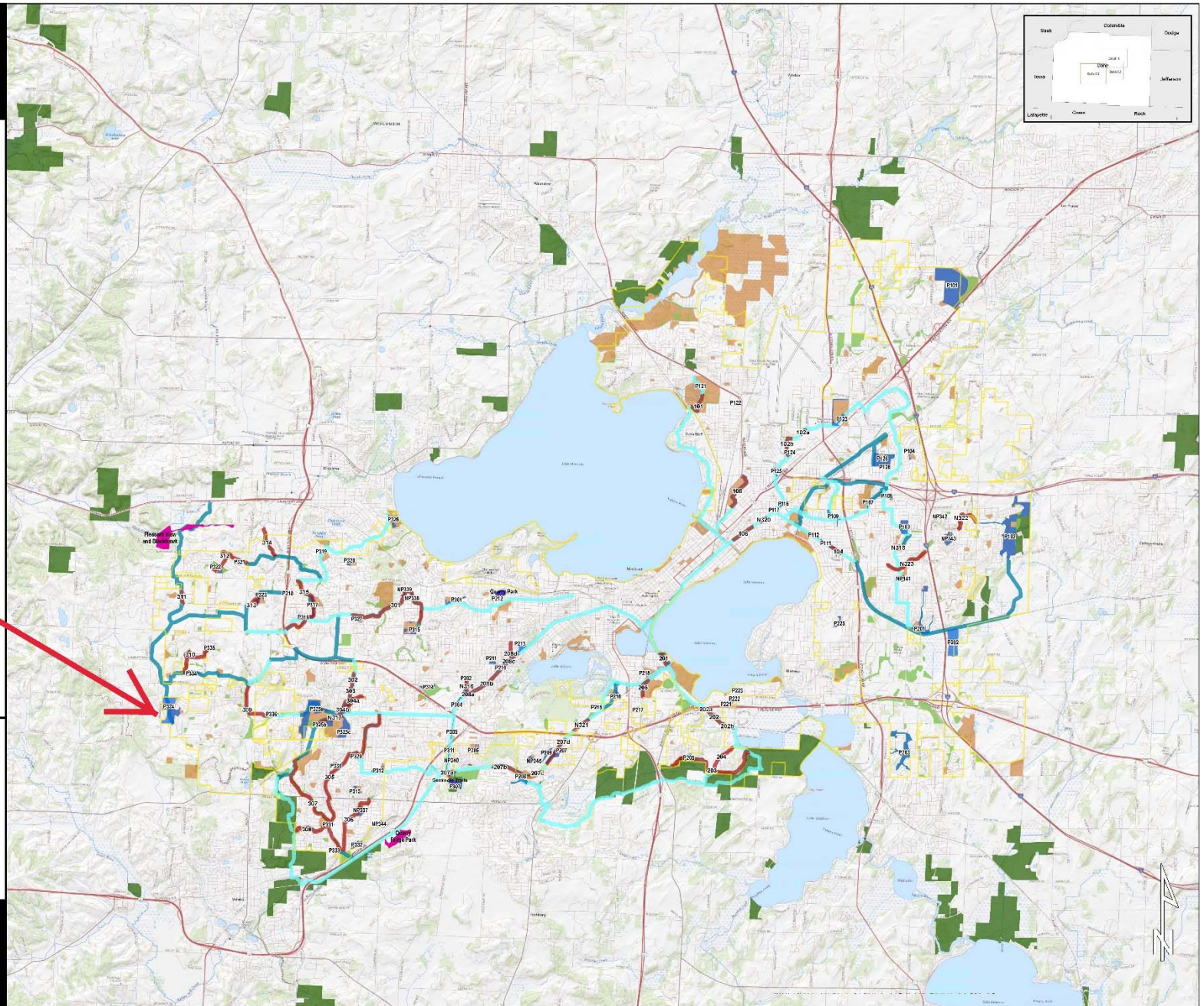
- Connections Using Existing Paths and Bike Routes
- Connections Using Planned/Future Concepts
- Proposed Linear/Parallel Natural Surface Trails
- Proposed Bike Optimized Facilities in Existing Parks & Engineering Properties
- Existing Singletrack Networks
- City of Madison Parks
- City of Madison Engineering Properties (Greenways & Ponds)
- Dane County Parks
- Madison City Limit

**HILL
CREEK
PARK**



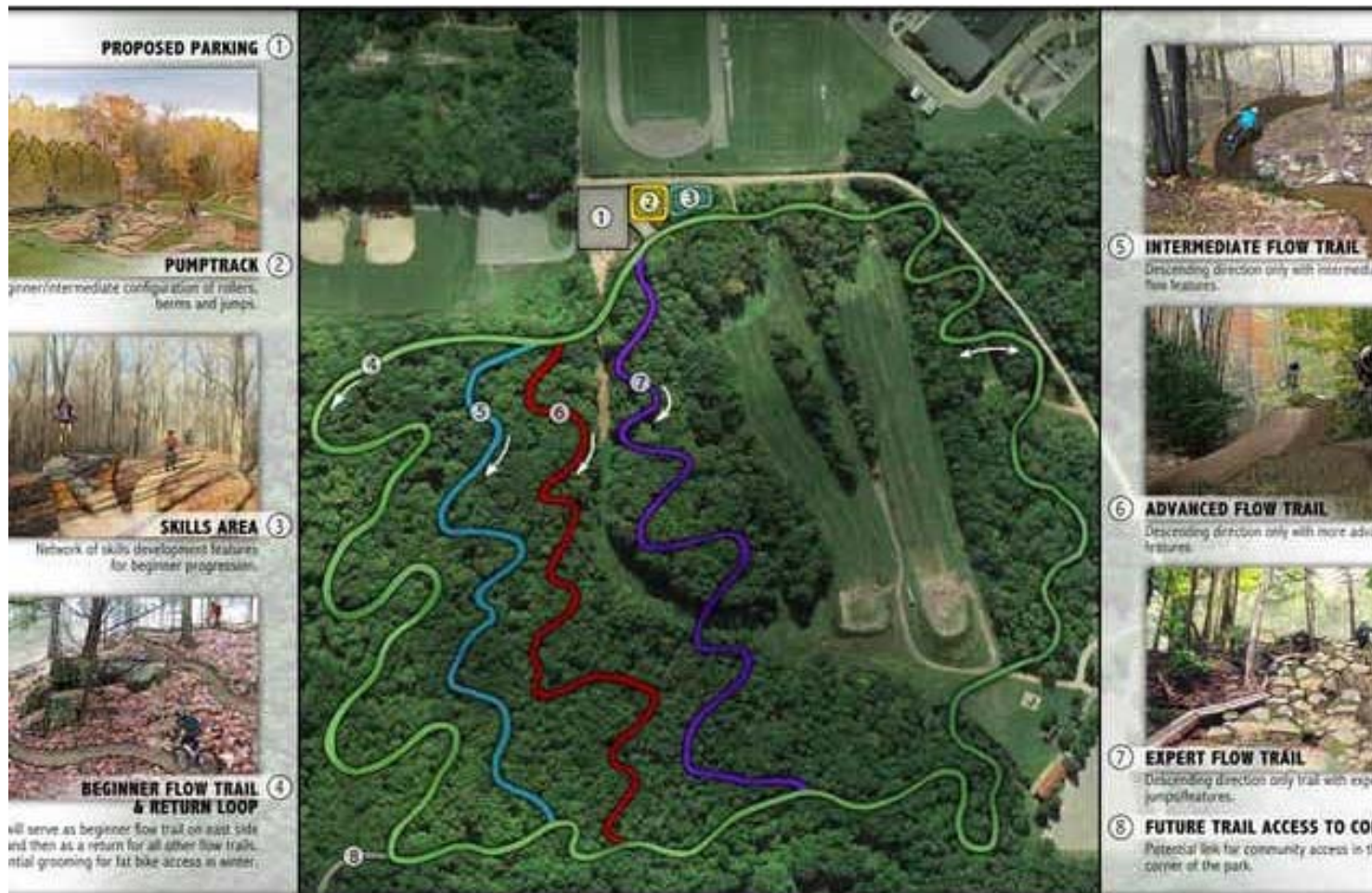
Miles 0 0.5 1 2

**Draft
Concept Plan
(Vicinity/Complete A01)**



Stacked Loop Bike Trails

Similar facility built in Wausau in 2016
Easy Perimeter Trail
2-3 Progressively more technical line options





Beginner Flow Trail
Pleasant View Golf Course
(Middleton)

- Variety of trail types
- Future public input for site
- With prairie and/or tree plantings



Intermediate Flow Trail
(Hayward, WI)

To Learn more or to ask a question

Visit our MadBAT Project page at:

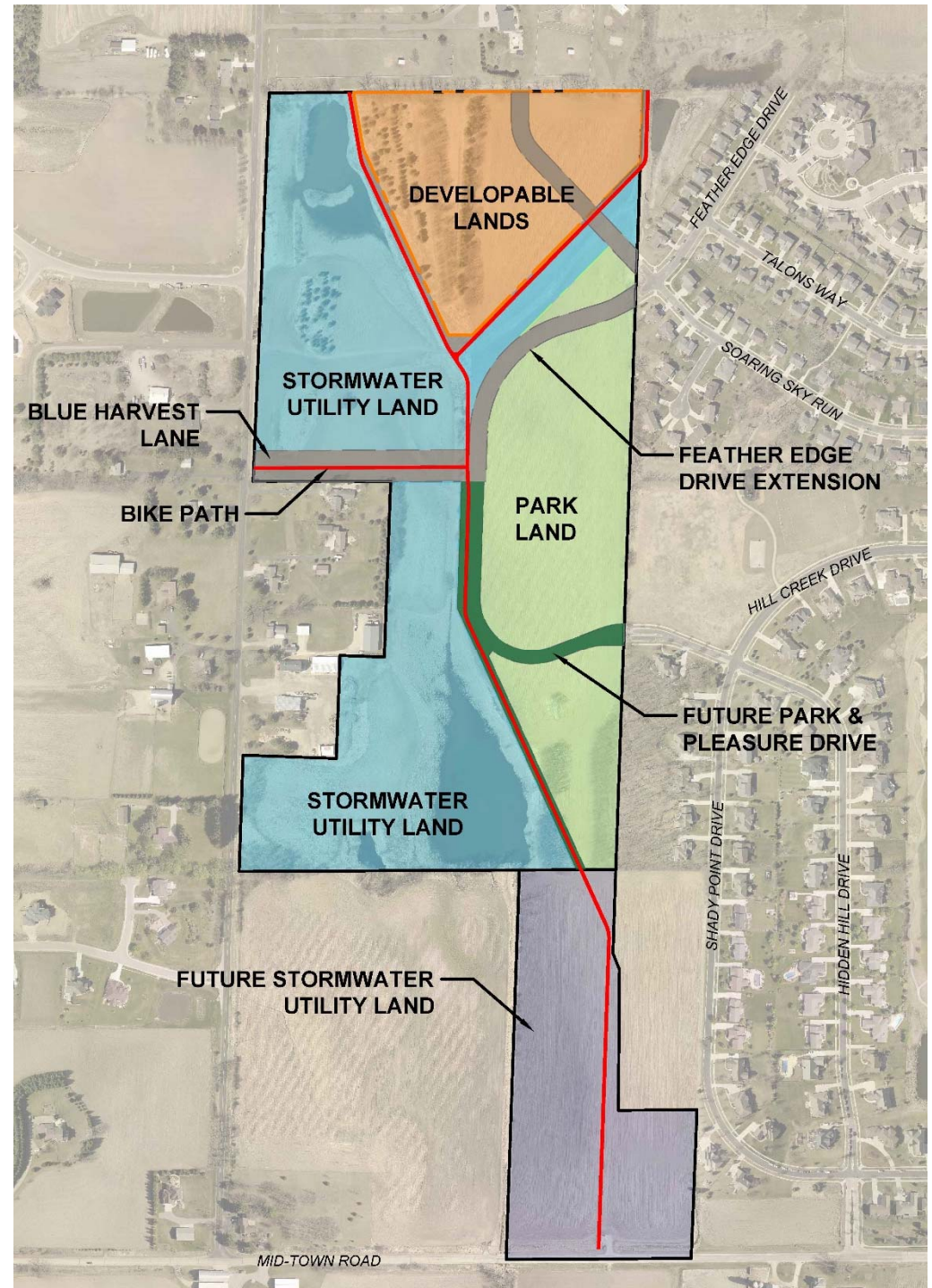
<https://www.cityofmadison.com/parks/play/madbat/>



Madison Bicycle Adventure Trail System

STREET CONNECTIONS

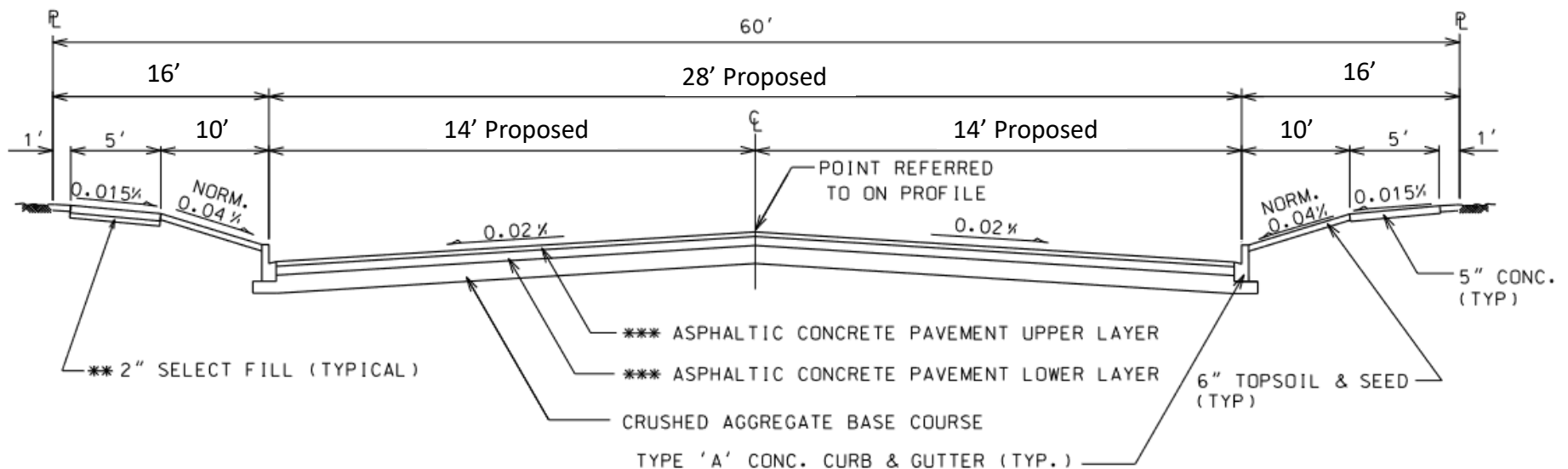
- Complete street connections per adopted Neighborhood Plan
 - Access to neighborhood and park
 - Balance traffic flow through neighborhood
- Design adjustments to help slow speeds



STREET DESIGN

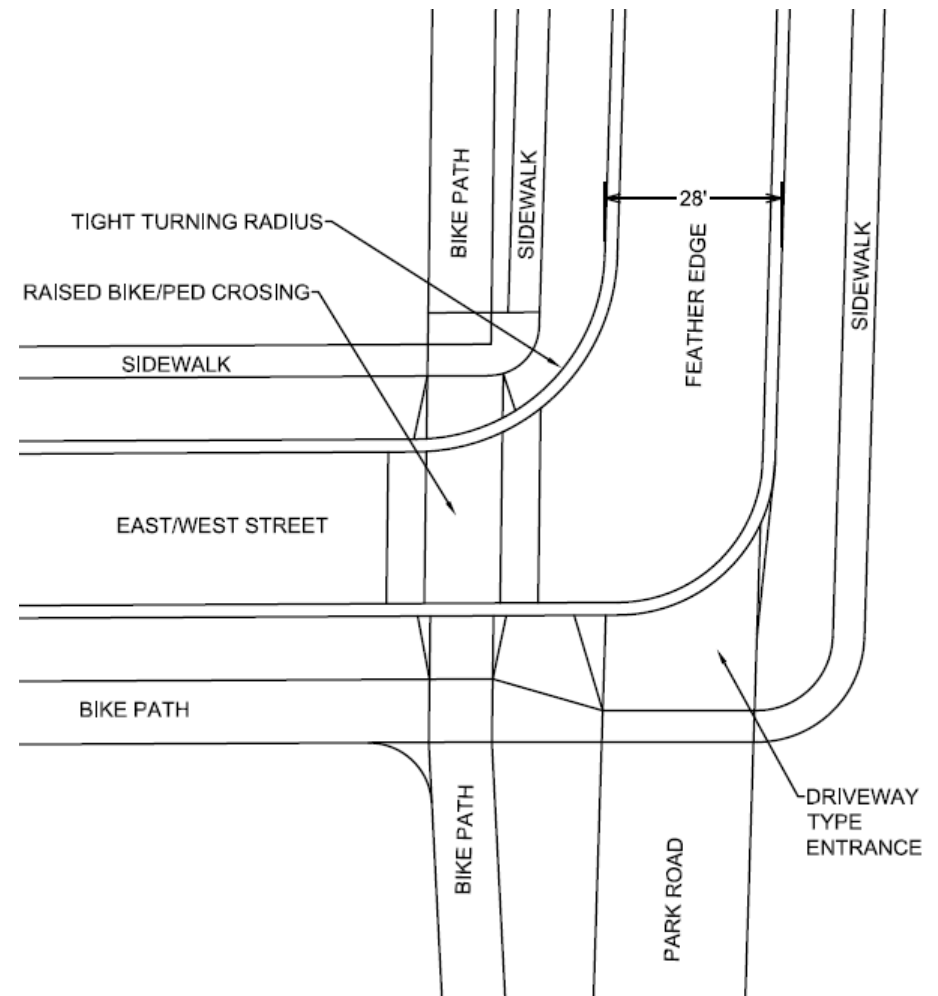
- East/West Connection & Feather Edge
 - 28' wide (to face of curb), minimum allowed width
 - Curb and gutter and sidewalk on both sides
 - Bike path connections
- Future Tree Tops Extension thru park
 - More rural type section without curb and gutter
 - Sidewalk connections to bike path
 - Bike path connection into park
 - Potential for parking bumpouts, if desired

Typical Street Section



DESIGN CONSIDERATIONS

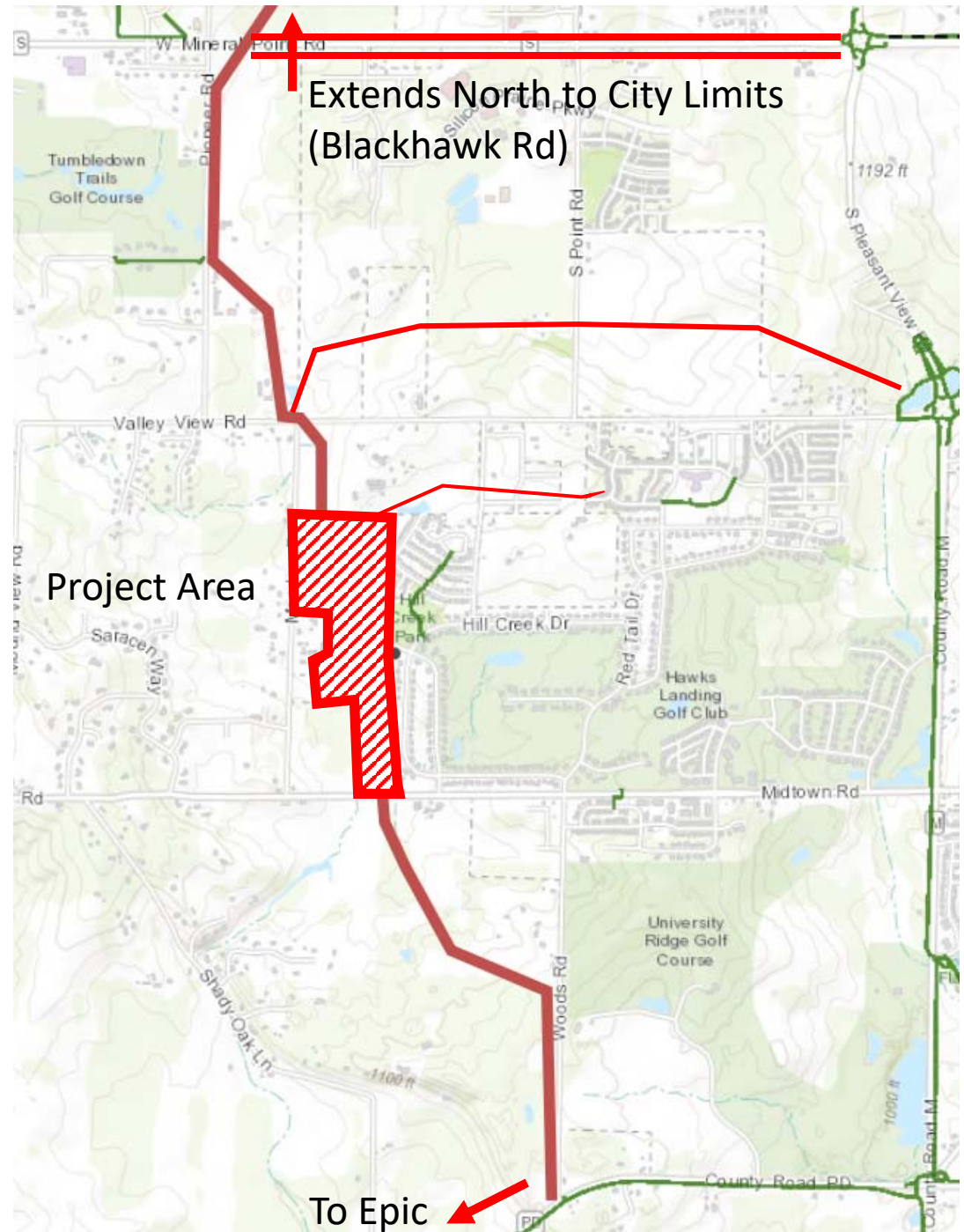
- Minimum street widths
 - Narrower streets create a more constricted feel to roadway
- Tighter curves
 - Vehicles will need to slow to navigate curves
 - Especially true at the intersection of Feather Edge with East/West road to Meadow
- Raised path crossings
 - Give priority to bike/ped crossing
 - Function as speed hump for vehicles
- Driveway type entrance to street thru park
 - Visually doesn't look/feel like a street connection
 - Slows speeds in and out of street
- Speed Limit 25 mph



Bike Path

- Bike Path adjacent to ponds part of more regional connection
 - Connects south to path along PD
 - Connects north beyond Mineral Point Rd.
- More local connections to the northeast and to future Meadow Rd.

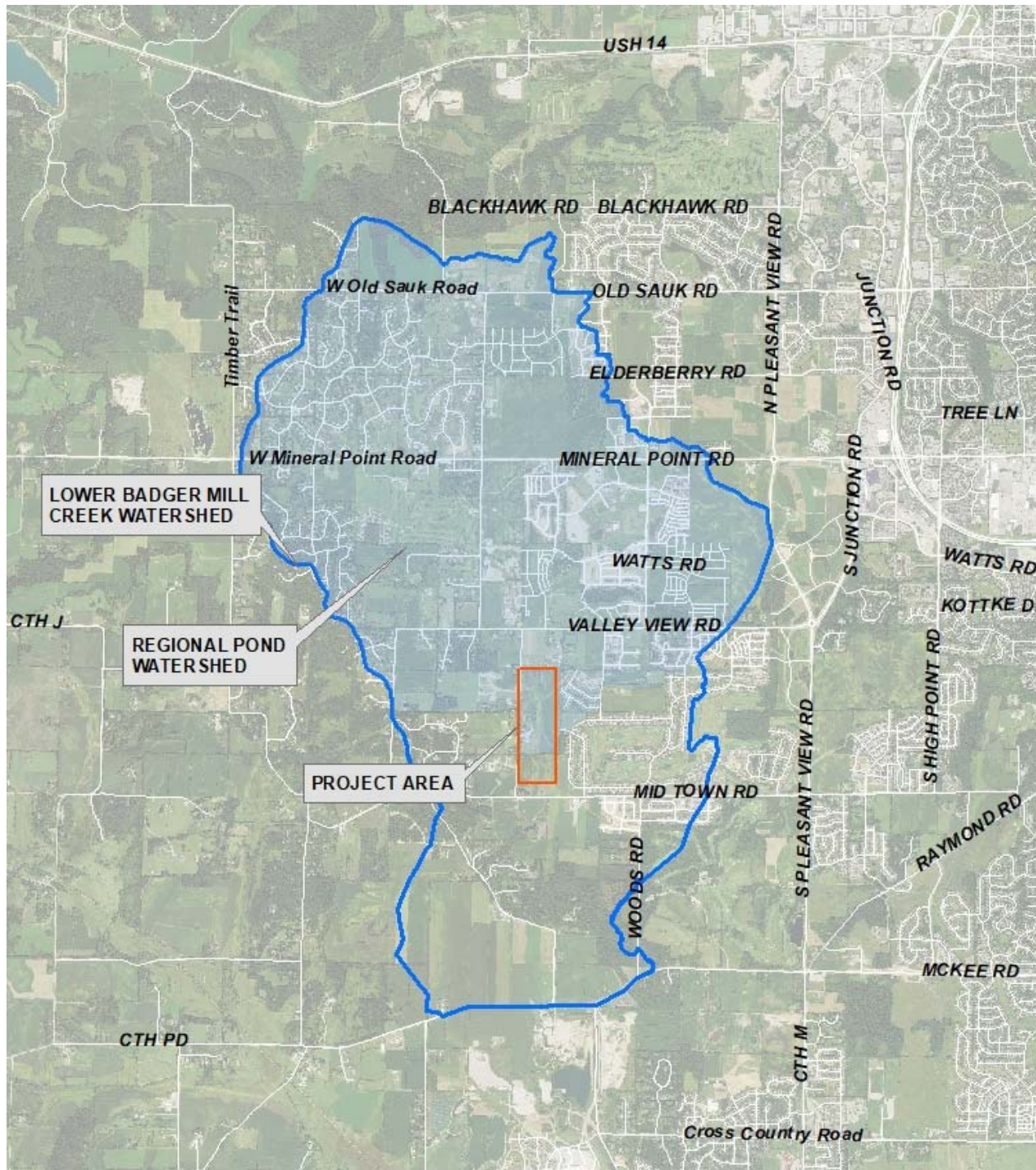
Red = planned path
Green = existing paths





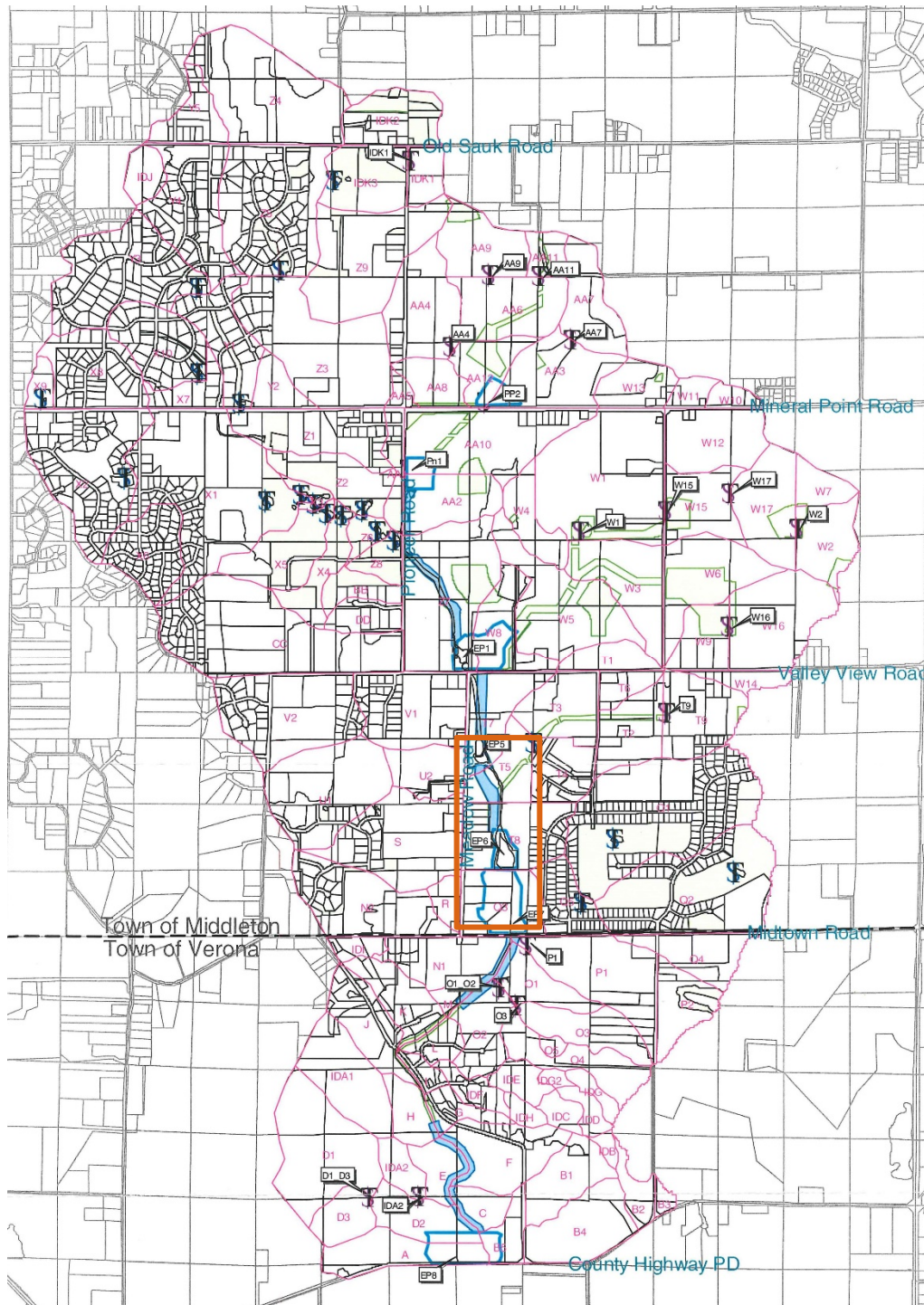
STORMWATER PONDS

Photo Credit: Rick Miygawa



LOWER BADGER MILL CREEK WATERSHED

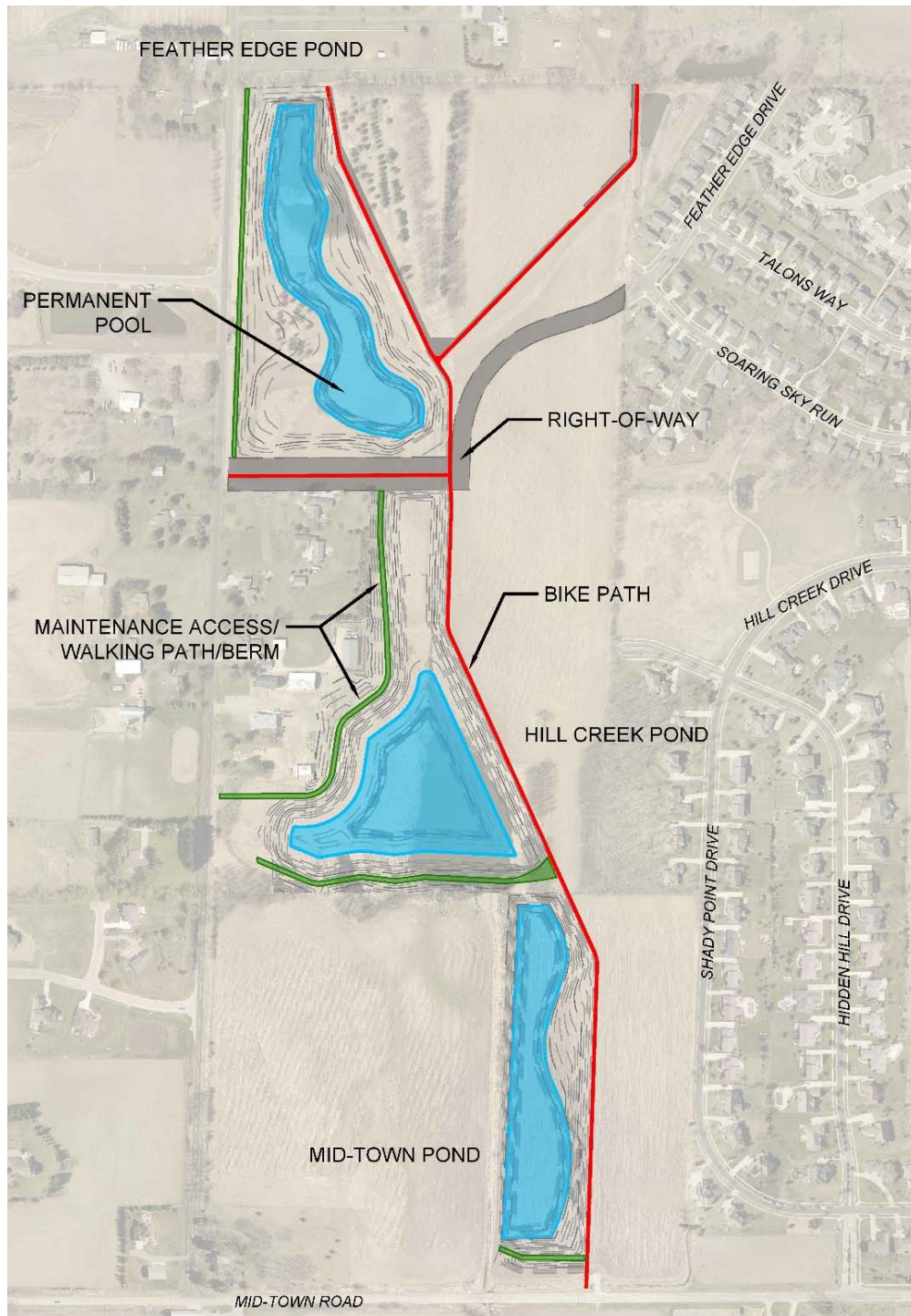
- Extends from Blackhawk Road to CTH PD
- Watershed Area: 5,600 acres/8.75 square miles
- Pond System Watershed: 3,900 acres/6 square miles



LOWER BADGER MILL CREEK WATERSHED

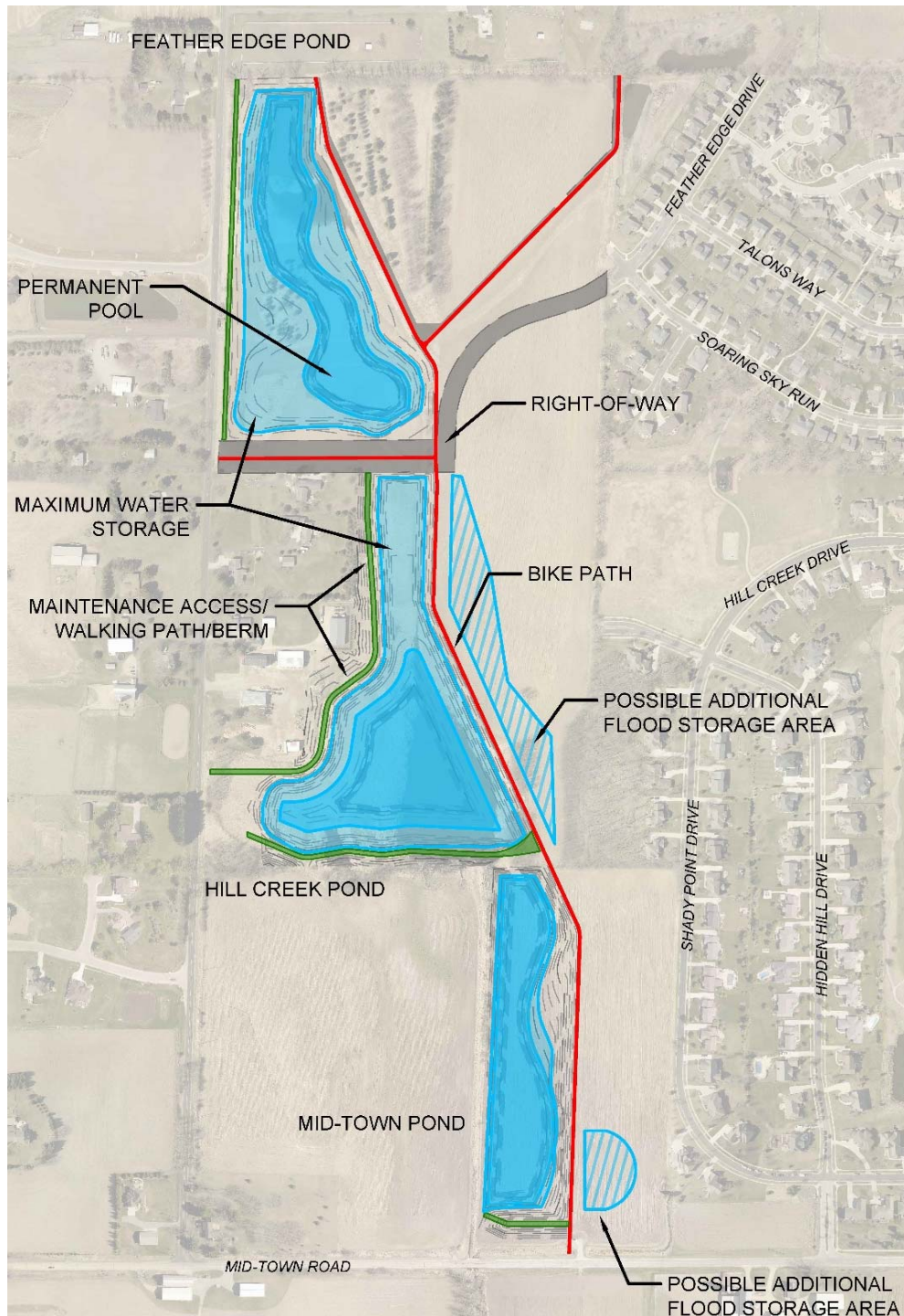
- The 2003 study identified a network of stormwater facilities needed to manage flood waters.
- Since this study, anticipated development has changed. Conditions in the watershed are different.
- City Engineering is currently working with consultants on a new watershed model.

2003 Stormwater Management Plan Map,
Showing Proposed Ponds and Greenways



STORMWATER PONDS

- Proposing three ponds, tentatively named: Feather Edge Pond, Hill Creek Pond, and Mid-Town Pond.
- Berms will be necessary to contain stormwater.
- Berms will serve as pedestrian and maintenance access to the site.



STORMWATER PONDS

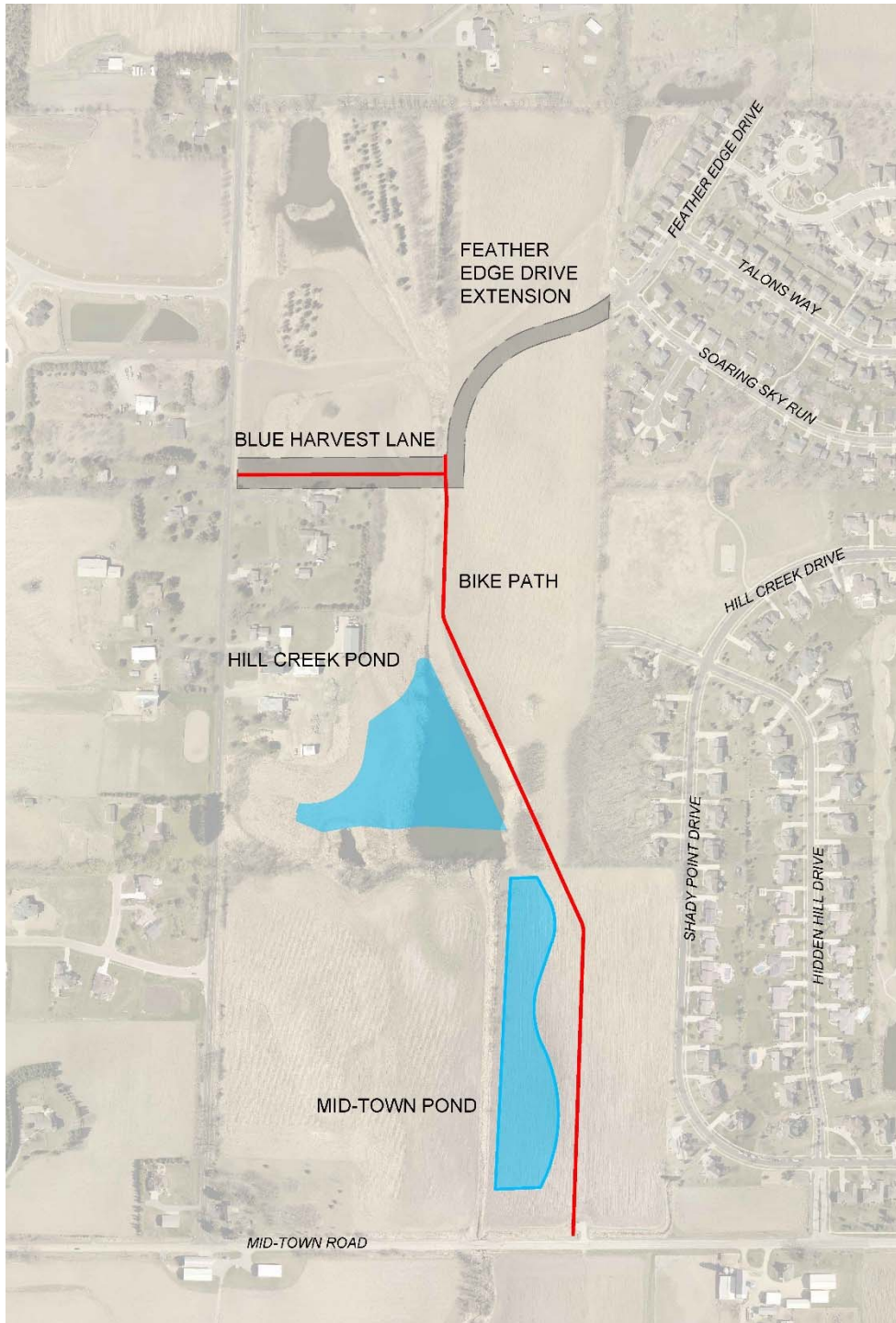
- This figure shows the maximum extent of stormwater retention: in a large event, most of the site will be inundated.
- Exploring the possibility of storing water on Parks property during large storms.
- Current modeling efforts will provide more detail on how the ponds function.



POND VEGETATON

- Native Forbes & Grasses will constitute the majority of the restoration. This material will be placed as a seed mix and takes time to become established.
- Wetlands will be constructed to replace those impacted by the project. This is the first City project where we will work to construct shallow-water wetlands in conjunction with pond construction.
- Trees are not always desirable on embankments, or in stormwater ponds, but grading alterations will be made to allow for planting trees in specific locations.
- Volunteers Welcome!





PROJECT PHASING

Phase 1:

- Feather Edge Drive Extension
- Blue Harvest Lane
- Portion of Bike Path
- Hill Creek Pond
- Mid-Town Pond

Feather Edge Pond, Hill Creek Park Master Planning, and the Park & Pleasure Drive are not currently scheduled.

QUESTIONS?

PROJECT WEBSITE:

<https://www.cityofmadison.com/engineering/projects/lower-badger-mill-creek-pond>

CONTACT INFORMATION:

Alder Harrington-McKinney: district1@cityofmadison.com

Corey Stelljes (Parks): cstelljes@cityofmadison.com

Sally Swenson (Storm): sswenson@cityofmadison.com

Jim Wolfe (Streets): jwolfe@cityofmadison.com

Caroline Burger (Storm): cburger@cityofmadison.com

Ann Freiwald (Parks): afreiwald@cityofmadison.com

Tim Parks (Planning): tparks@cityofmadison.com

Chris Petykowski (Streets): cpetykowski@cityofmadison.com

Janet Schmidt (Storm): jschmidt@cityofmadison.com

Lauren Striegl (Storm): lstriegl@cityofmadison.com