

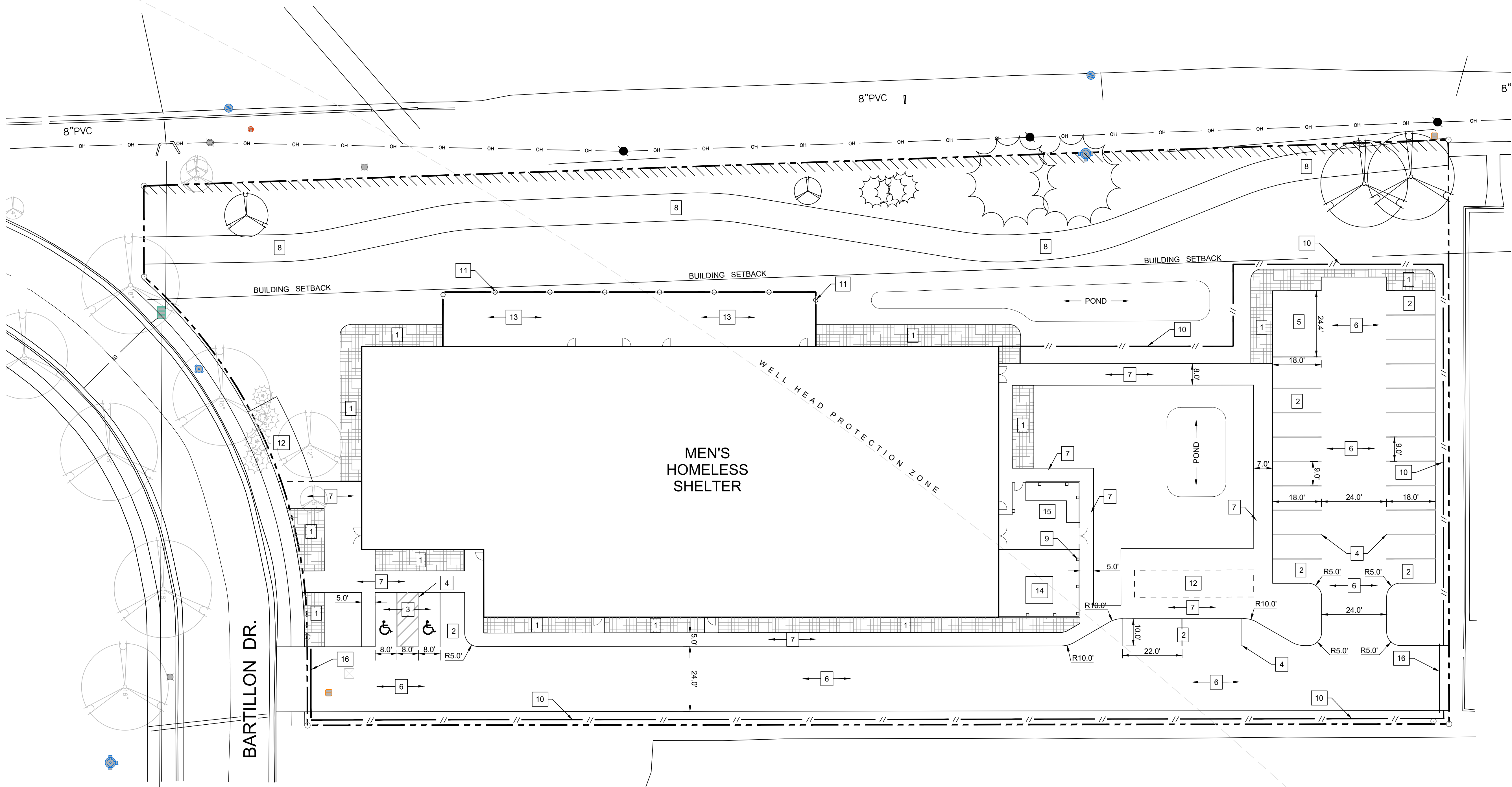


**SNYDER  
& ASSOCIATES**

5010 VOGES ROAD  
MADISON, WI 53718  
608-838-0444  
www.snyder-associates.com  
PROJECT # 122.1182.30

**MENS HOMELESS  
SHELTER**

1904 BARTILLON DR.  
MADISON, WI 53704



**SITE PLAN KEYNOTES**

1. LANDSCAPE AREA.
2. OFF-STREET PARKING STALLS STRIPING - 4" WIDE STALL LINES, USE HIGH VISIBILITY YELLOW PAINT. SPACES PROVIDED  
(24) 9'-0" X 18'-0" GENERAL PARKING  
(2) 9'-0" X 20'-0" ACCESSIBLE PARKING  
(1) 9'-0" X 20'-0" LOADING ZONE
3. A.D.A. ACCESSIBLE PARKING SPACE WITH LOADING ZONE. PROVIDE APPROPRIATE STRIPING AND PAVEMENT MARKINGS.
4. 4" WIDE, HIGH VISIBILITY, PAVEMENT STRIPING, LANE MARKINGS AND TEXT. COLOR: YELLOW  
PAINT SHALL BE SHERWIN WILLIAMS SETFAST PREMIUM ALKYD ZONE MARKING PAINT
5. DUMPSTER ENCLOSURE AREA
6. 6" DEPTH (MIN.) CONCRETE PAVEMENT WITH #3 REBAR 3' O.C. CONCRETE SEALER: TK-26UV
7. 5" DEPTH CONCRETE SIDEWALK / PATIO
8. 10' WIDE HARD SURFACE PEDESTRIAN / BIKE PATH
9. 6' HIGH TYPE 1 METAL FENCE
10. 6' HIGH TYPE 2 METAL FENCE
11. 4' HIGH METAL FENCE
12. BIKE RACK LOCATION
13. 4" CONCRETE PATIO AREA
14. TRANSFORMER LOCATION
15. BACKUP GENERATOR
16. GATE LOCATION

**FIRE LANE:**

BARTILLON DRIVE WILL ACT AS THE FIRE LANE ACCESS TO THE BUILDING.

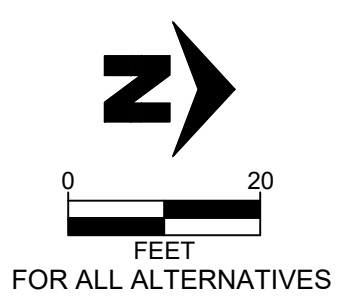
**NOTE:**

CONTRACTOR SHALL FIELD VERIFY ALL EXISTING UTILITIES ON AND ADJACENT TO THE SITE PRIOR TO THE START OF THE PROJECT.  
RADI ARE FROM FACE OF CURB  
DIMENSIONS ARE FROM FACE OF CURB

DATE OF ISSUE:	12/29/2022
PRE-DESIGN	3/23/2023
INFORMATIONAL MEETING	6/12/2023

REVISIONS:
<b>PRELIMINARY NOT FOR CONSTRUCTION</b>

PROJECT # 22061

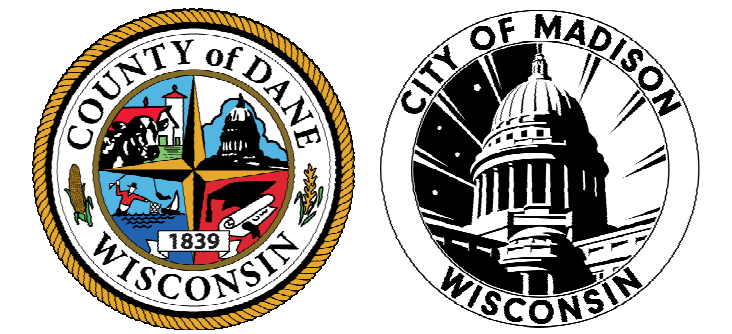


**SITE PLAN**

**C 300**

**FLOOR PLAN GENERAL NOTES**

- A. SEE SHEET A5.0 FOR LARGE SCALE PLANS.
- B. SEE SHEET A7.0 FOR INTERIOR ELEVATIONS.
- C. PROVIDE VERTICAL CONTROL JOINTS (CJS) WHERE STRUCTURAL SYSTEMS CHANGE. LOCATIONS THAT ARE PRONE TO CRACKING AND AS REQUIRED BY MANUFACTURER'S INSTALLATION RECOMMENDATIONS. (NOT SHOWN IN SD DRAWINGS SET)
- D. VERIFY SIZE AND LOCATIONS OF ALL MECHANICAL OPENINGS. GENERAL CONTRACTOR TO PAINT AND SEAL LOUVER PERIMETER, TYPICAL.
- E. GENERAL CONTRACTOR TO PROVIDE CONCRETE EQUIPMENT PADS/CURBS AS REQUIRED FOR MECHANICAL/ELECTRICAL EQUIPMENT. VERIFY SIZE/PROFILE/LOCATION WITH PLUMBING/MECHANICAL/ELECTRICAL.
- F. GENERAL CONTRACTOR TO INSTALL FOAM FILLER AT ALL MASONRY WALL CONTROL/EXPANSION JOINTS AND SEAL BOTH SIDES (WALL REINFORCING TO DISCONTINUE AT JOINTS).
- G. GENERAL CONTRACTOR TO PROVIDE WOOD BLOCKING BETWEEN WOOD/METAL STUDS AS REQUIRED FOR CASEWORK/HANDRAIL/TOILET ACCESSORIES ETC. MOUNTING.
- H. REFER TO EXTERIOR ELEVATIONS FOR EXTERIOR WALL CONTROL JOINTS. (NOT SHOWN IN SD DRAWINGS SET)
- I. VERIFY ALL ACTUAL CHASE DIMENSIONS WITH HVAC CONTRACTOR.
- J. ADA CLEARANCE CIRCLES AND BOXES SHOWN ON PLAN ARE FOR INFORMATION PURPOSES ONLY.
- K. DIMENSIONS ARE FROM FACE OF STUD (OR CMU) TO FACE OF STUD (OR CMU) UNLESS NOTED OTHERWISE.



**CITY OF MADISON -  
DANE COUNTY -  
MEN'S HOMELESS  
SHELTER**  
1904 BARTILLON DRIVE,  
MADISON, WI

**SCHEMATIC  
DESIGN**

DATE OF ISSUE: 6/30/2023

**PRELIMINARY  
NOT FOR  
CONSTRUCTION**

PROJECT # 22061

**FIRST AND SECOND  
FLOOR OVERALL  
PLAN**

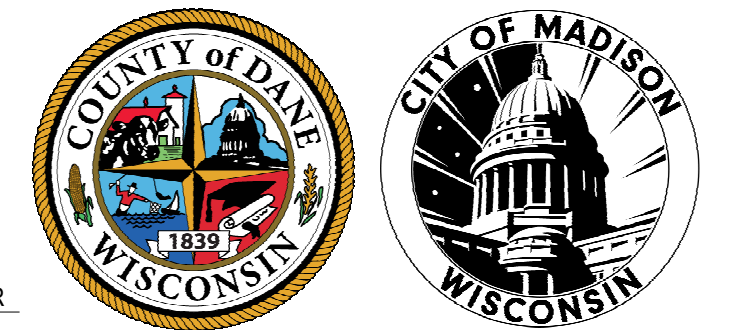
**A1.0**



**2 SECOND FLOOR PLAN**  
1/16" = 1'-0"

**1 FIRST FLOOR PLAN**  
1/16" = 1'-0"

6/30/2023 5:58:22 PM Autodesk Docs\22061 - 1904 Bartillon Drive Homeless Shelter\22061 - MEN Shelter SD Model.rvt



**CITY OF MADISON -  
DANE COUNTY -  
MEN'S HOMELESS  
SHELTER**  
1904 BARTILLON DRIVE,  
MADISON, WI



**5 SOUTH ELEVATION**  
3/32" = 1'-0"

**4 NORTH ELEVATION**  
3/32" = 1'-0"



**3 EAST ELEVATION**  
3/32" = 1'-0"



**2 HIDDEN WEST ELEVATION**  
3/32" = 1'-0"



**1 WEST ELEVATION**  
3/32" = 1'-0"

**ELEVATION LEGEND & NOTES**

MASONRY	COLOR	MORTAR
BRK-1 BRICK VENEER	RED	COLOR
STN-1 STONE VENEER		COLOR
CST CAST STONE		COLOR
PCP PRECAST PANEL		
CNC CONCRETE		
CJ CONTROL JOINT		
SIDING & TRIM		COLOR
FCLS-1 FIBER CEMENT LAP SIDING -4" EXPOSURE		COLOR
FCP-1 FIBER CEMENT PANEL		COLOR
PRE-FINISHED METAL MANUFACTURER (COATED METALS GROUP)		COLOR
APT ALUMINUM PANEL TRIM		CLEAR
ARS ALUMINUM RAILING SYSTEM		COLOR
DS DOWNSPOUT		COLOR
GTR GUTTER		COLOR
CPG COPING		COLOR
FSA FASCIA		COLOR
SFT SOFFIT		COLOR
SCR SCUPPER		COLOR
STOREFRONT		COLOR
ANODIZED ALUMINUM		CLEAR

**GENERAL NOTES**

- NOT ALL MASONRY PENETRATIONS SHOWN, COORDINATE WITH MEP CONTRACTORS.
- AT 135 DEGREE OUTSIDE CORNERS PROVIDE 135 DEGREE BRICK CORNER UNITS.
- REFER TO WINDOW TYPE SHEET A6.2 FOR ALL WINDOW INFORMATION.
- CONTROL JOINTS CONTINUOUS FROM TOP OF FOUNDATION TO TOP OF WALL.

**SCHEMATIC  
DESIGN**

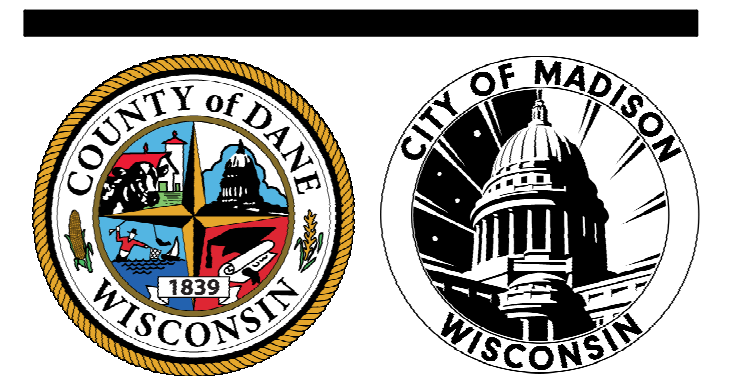
DATE OF ISSUE: 6/30/2023

**PRELIMINARY  
NOT FOR  
CONSTRUCTION**

PROJECT # 22061

**EXTERIOR  
ELEVATIONS**

**A2.0**



**CITY OF MADISON -  
DANE COUNTY -  
MEN'S HOMELESS  
SHELTER**

1904 BARTILLON DRIVE,  
MADISON, WI

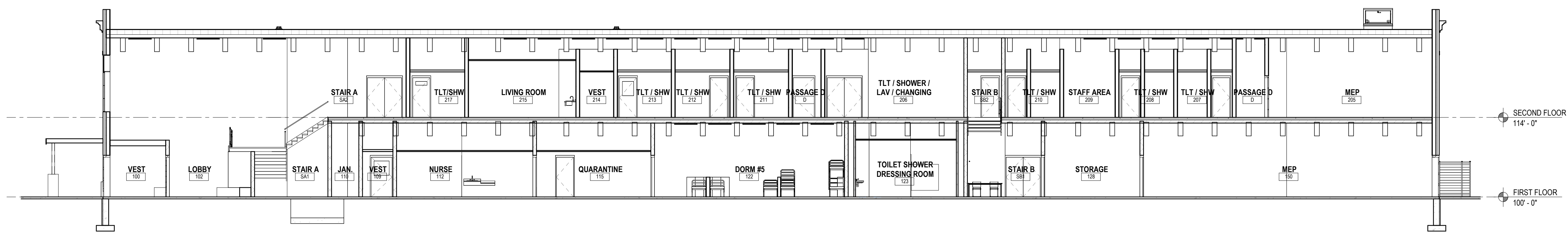
DATE OF ISSUE: 6/30/2023

**PRELIMINARY  
NOT FOR  
CONSTRUCTION**

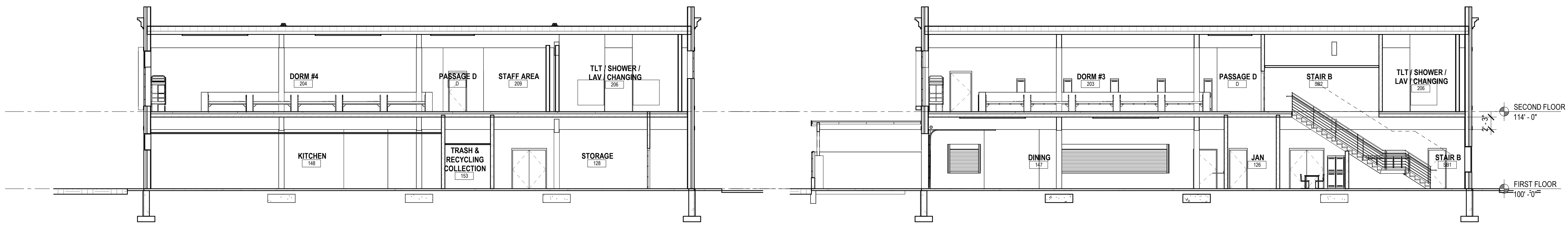
PROJECT # 22061

**BUILDING SECTIONS**

**A3.0**

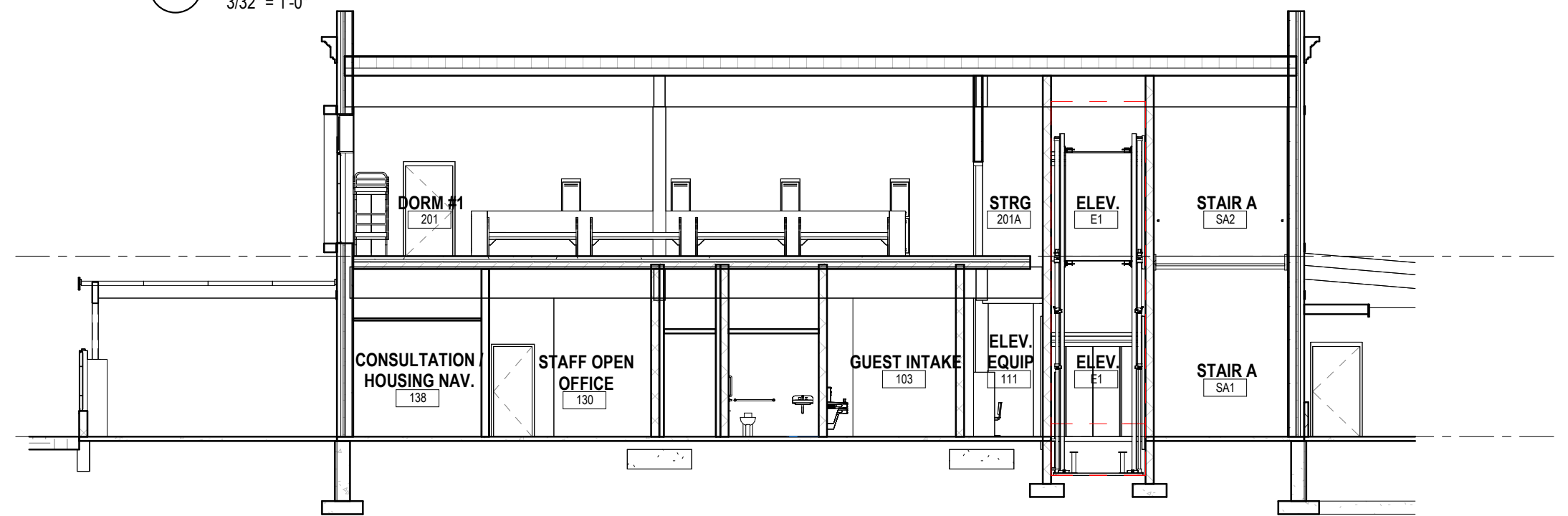


**E BUILDING SECTION**  
3/32" = 1'-0"

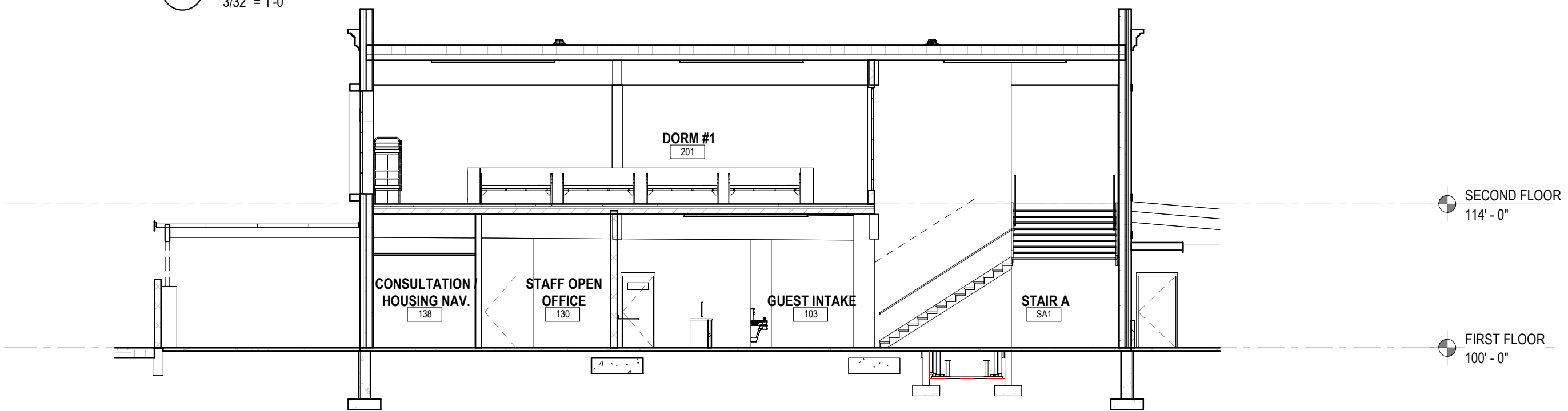


**D BUILDING SECTION F**  
3/32" = 1'-0"

**C BUILDING SECTION E**  
3/32" = 1'-0"



**B BUILDING SECTION B**  
3/32" = 1'-0"



**A BUILDING SECTION A**  
3/32" = 1'-0"

6/30/2023 5:58:38 PM Autodesk Docs\22061 - 1904 Bartillon Drive Homeless Shelter\22061 - MEN Homeless SD Model.rvt