

CTH M Reconstruction

ID 5992-09-81

City of Madison, South Pleasant View Road
(Cross Country Road – Prairie Hill Road)

CTH M

Dane County



Public Information Meeting

Thursday, December 8, 2011

6 p.m. to 8 p.m.

Verona Senior Center

Purpose of Meeting

The City of Madison, in partnership with the City of Verona and Dane County, is proposing a project to reconstruct County Highway M (CTH M) from Cross Country Road to Prairie Hill Road. The purpose of today's meeting is to present preliminary plans and alternatives, answer questions, and listen to your comments, concerns, or suggestions. The meeting is an open house format with a brief presentation.

Meeting Format

6:00 – 6:30 p.m. Open House

6:30 – 7:00 p.m. Presentation, Q&A

7:00 – 8:00 p.m. Open House

Please review the exhibits around the room. City of Madison, City of Verona, and Dane County representatives, along with staff from MSA Professional Services and SRF Consulting Group are available to answer your questions about the exhibits or project, and gather your comments and feedback. You are also welcome to write down your comments on the attached comment sheet. You can drop the comments off today or send them at a later time. Project team contact information is listed at the end of this handout.

Project Goals

- Provide a safe and convenient corridor for all users including pedestrians, bicyclists, and motor vehicles
- Provide acceptable operating conditions for existing and future traffic volumes
- Accommodate planned growth in the area
- Provide well designed intersections that minimize impacts

Project information

The focus of today's meeting is the approximately three mile segment of CTH M between Cross Country Road and Valley View Road (orange and red). These are the final two segments of the entire CTH M project corridor as shown in Figure 1.

The current rural, two lane design of CTH M cannot accommodate the current and growing traffic volumes. The proposed project will include reconstructing CTH M as an urban arterial with curb and gutter and include a raised median, bike lanes, multi-use paths, and sidewalk. See Figure 2 for a typical cross section.

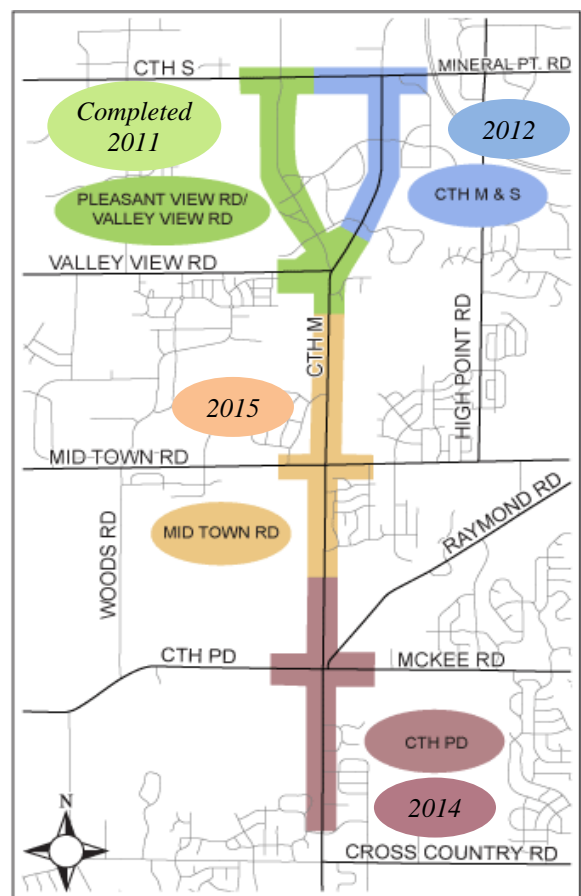


Figure 1 - CTH M Project Map. Today's meeting will focus on the southern segments between Cross Country Road and Valley View Road (orange & red)

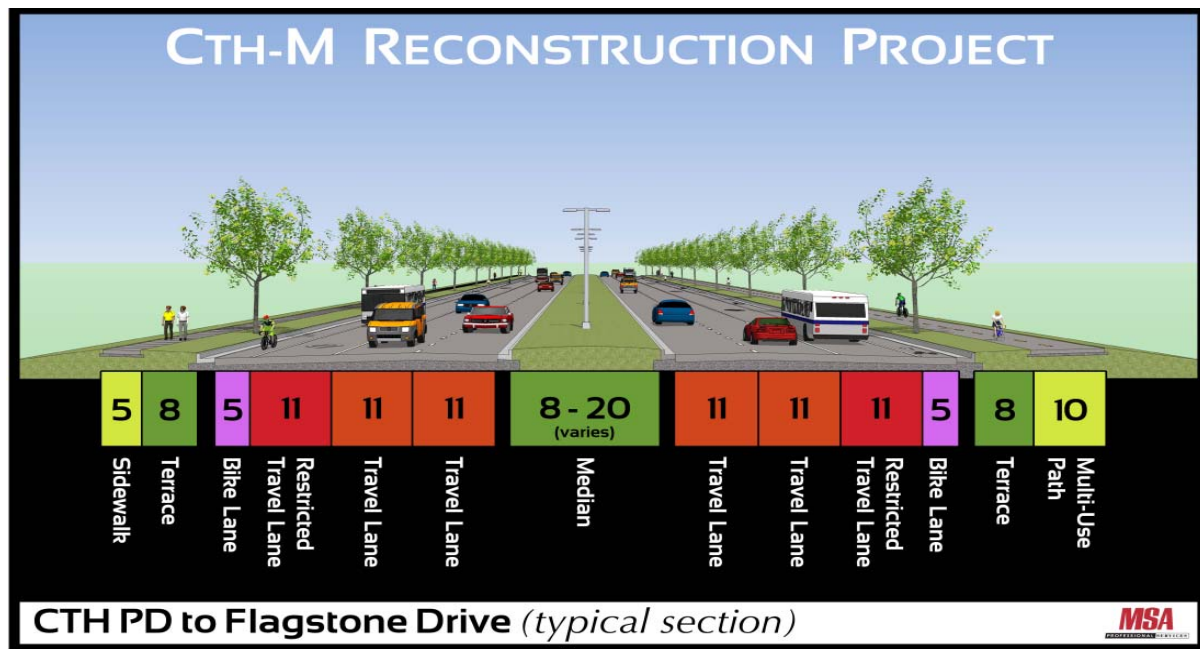


Figure 2 – Example CTH M proposed typical section from CTH PD to Prairie Hill Road.

The reconstruction will also include reconstruction of the CTH PD and Mid Town Road intersections with CTH M. One of the goals of today's meeting is to gather feedback regarding the design of these intersections. Alternative designs under consideration include traffic signals, roundabouts, and a split grade intersection. Intersection design alternatives are shown on the exhibits around the room.

Project schedule

Milestone

Preliminary Design Complete
Final Design Complete
Begin Construction

CTH PD Segment

Summer 2012
Summer 2013
Spring 2014

Mid Town Road Segment

Summer 2012
Summer 2014
Spring 2015

Contact Information

City of Madison

Rob Phillips, P.E.
City Engineer
rphillips@cityofmadison.com
(608) 266-4751

Dane County

Pam Dunphy, P.E.
Assistant Highway Commissioner
Dunphy@co.dane.wi.us
(608) 266-4036

City of Verona

Ron Rieder
Director of Public Works
ron.rieder@ci.verona.wi.us
(608) 848-6801

MSA Professional Services

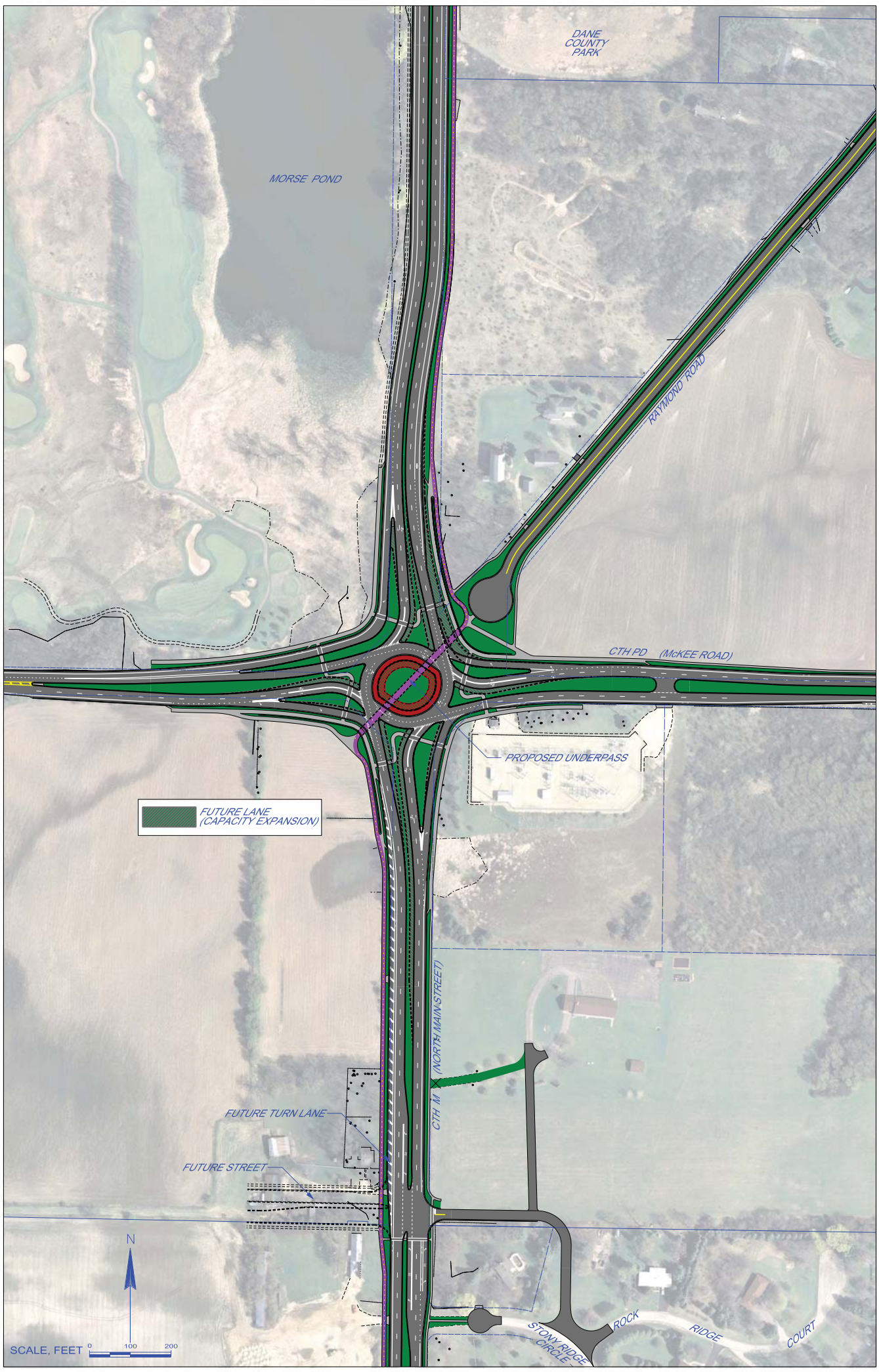
Jason DiPiazza, P.E.
Project Engineer
jdipiazza@msa-ps.com
(608) 242-7779

Intersection Alternatives Comparison: CTH PD & CTH M

CTH PD & CTH M	Roundabout	Split Grade Jug Handle	At Grade Traffic Signal
Operation ¹ 2035 Traffic Volumes	Better (LOS C)	Better (LOS C)	Failing (LOS E)
Right of Way required (cost)	2.5 Acres (\$1.6 Million)	6.0 Acres (\$3.9 Million)	3.9 Acres (\$2.5 Million)
Estimated construction cost	\$3.6 Million	\$6.0 Million	\$3.8 Million
Environmental impacts	Wetlands, Utilities, Farmland	Wetlands, Utilities, Farmland	Wetlands, Utilities, Farmland,

¹ Scale of A (best) to F (severe congestion)

ESTIMATED COST OF REMAINING ROADWAY (outside intersection limits): \$15.2 Million (including R/W)





MORSE POND

RAYMOND ROAD

CTH PD (McKEE ROAD)

GRADE SEPERATED CROSSING

STORM WATER RETENTION POND

FUTURE TURN LANE

CTH M (NORTH MAIN STREET)

FUTURE STREET

FUTURE ACCESS

ROCK RIDGE COURT

SCALE, FEET 0 100 200

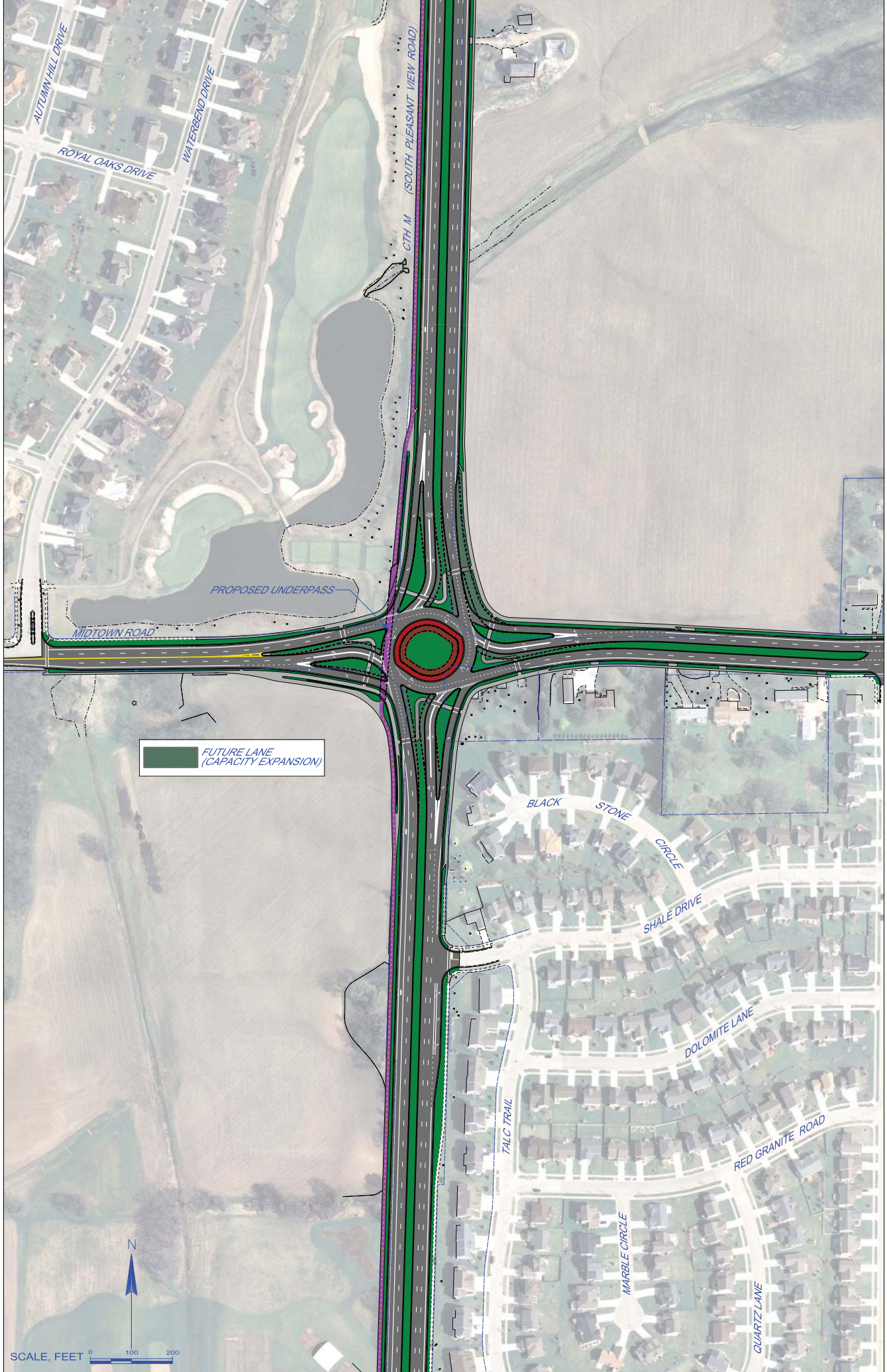
N

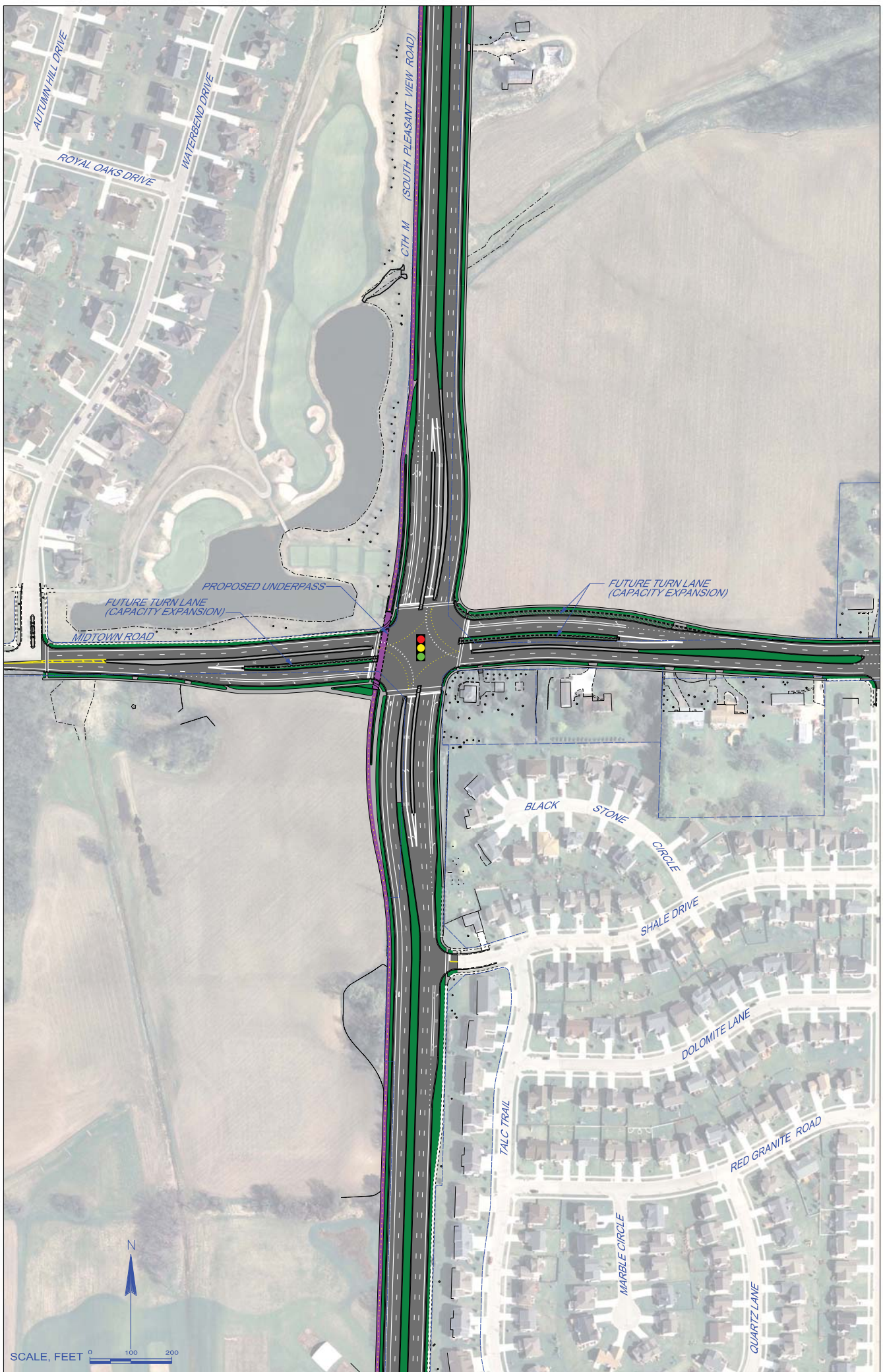
Intersection Alternatives Comparison: Mid Town Road & CTH M

Mid Town Road & CTH M	Roundabout	At Grade Traffic Signal
Operation ¹ 2035 Traffic Volumes	Better (LOS C)	Acceptable (LOS D)
Right of Way required (cost)	3.8 Acre (\$2.5 Million)	3.4 Acre (\$2.2 Million)
Estimated construction cost	\$3.7 Million	\$4.0 Million
Environmental impacts	Residence relocation, Golf Course, Farmland	Golf Course, Farmland
Adjacent property access (Existing homes on Mid Town Road)	Better (U-turn at roundabout)	Limited (right in/right out)

¹ Scale of A (best) to F (severe congestion)

ESTIMATED COST OF REMAINING ROADWAY (outside intersection limits): \$15.2 Million (including R/W)





SCALE, FEET 0 100 200