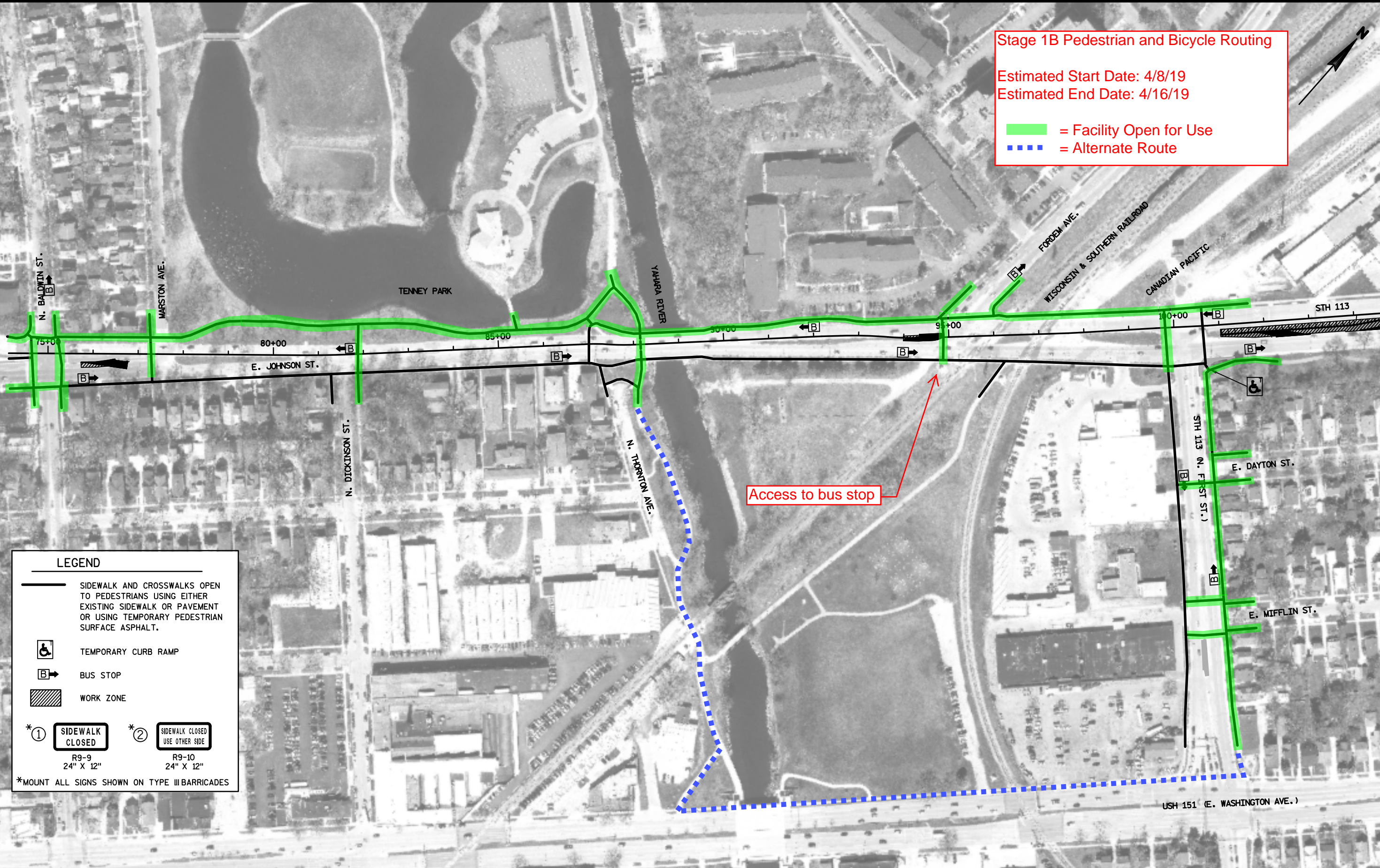


**Stage 1B Pedestrian and Bicycle Routing**

Estimated Start Date: 4/8/19  
 Estimated End Date: 4/16/19

█ = Facility Open for Use  
▬▬▬ = Alternate Route



**LEGEND**

- SIDEWALK AND CROSSWALKS OPEN TO PEDESTRIANS USING EITHER EXISTING SIDEWALK OR PAVEMENT OR USING TEMPORARY PEDESTRIAN SURFACE ASPHALT.
- TEMPORARY CURB RAMP
- BUS STOP
- WORK ZONE
- SIDEWALK CLOSED**  
R9-9  
24" X 12"
- SIDEWALK CLOSED USE OTHER SIDE**  
R9-10  
24" X 12"

\*MOUNT ALL SIGNS SHOWN ON TYPE III BARRICADES