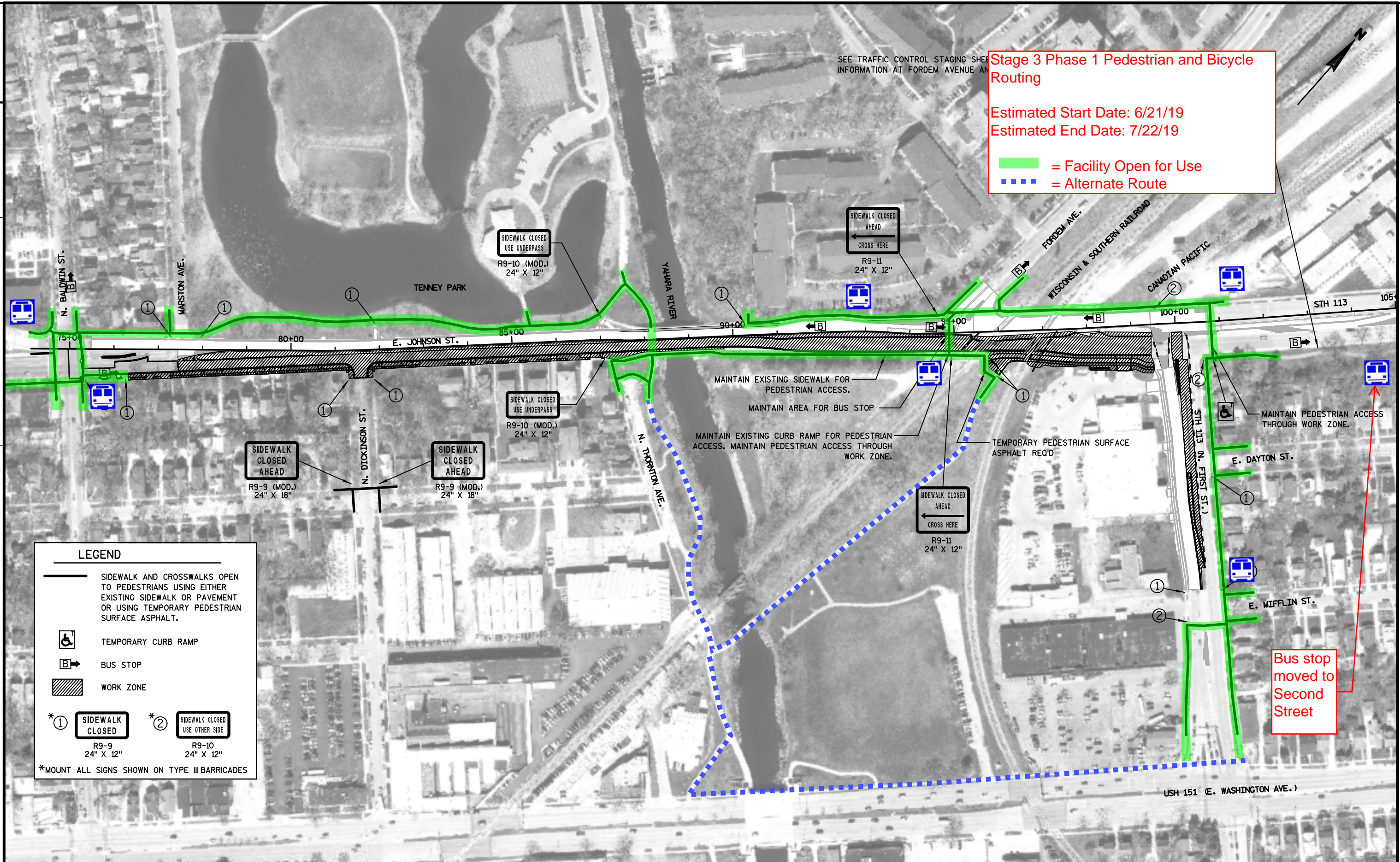


Stage 3 Phase 1 Pedestrian and Bicycle Routing

Estimated Start Date: 6/21/19  
Estimated End Date: 7/22/19

█ = Facility Open for Use  
▬▬▬ = Alternate Route



**LEGEND**

- SIDEWALK AND CROSSWALKS OPEN TO PEDESTRIANS USING EITHER EXISTING SIDEWALK OR PAVEMENT OR USING TEMPORARY PEDESTRIAN SURFACE ASPHALT.
- ♿ TEMPORARY CURB RAMP
- ⓑ BUS STOP
- ▨ WORK ZONE
- \*① **SIDEWALK CLOSED**  
R9-9 (MOD.)  
24" X 12"
- \*② **SIDEWALK CLOSED USE OTHER SIDE**  
R9-10 (MOD.)  
24" X 12"

\*MOUNT ALL SIGNS SHOWN ON TYPE III BARRICADES