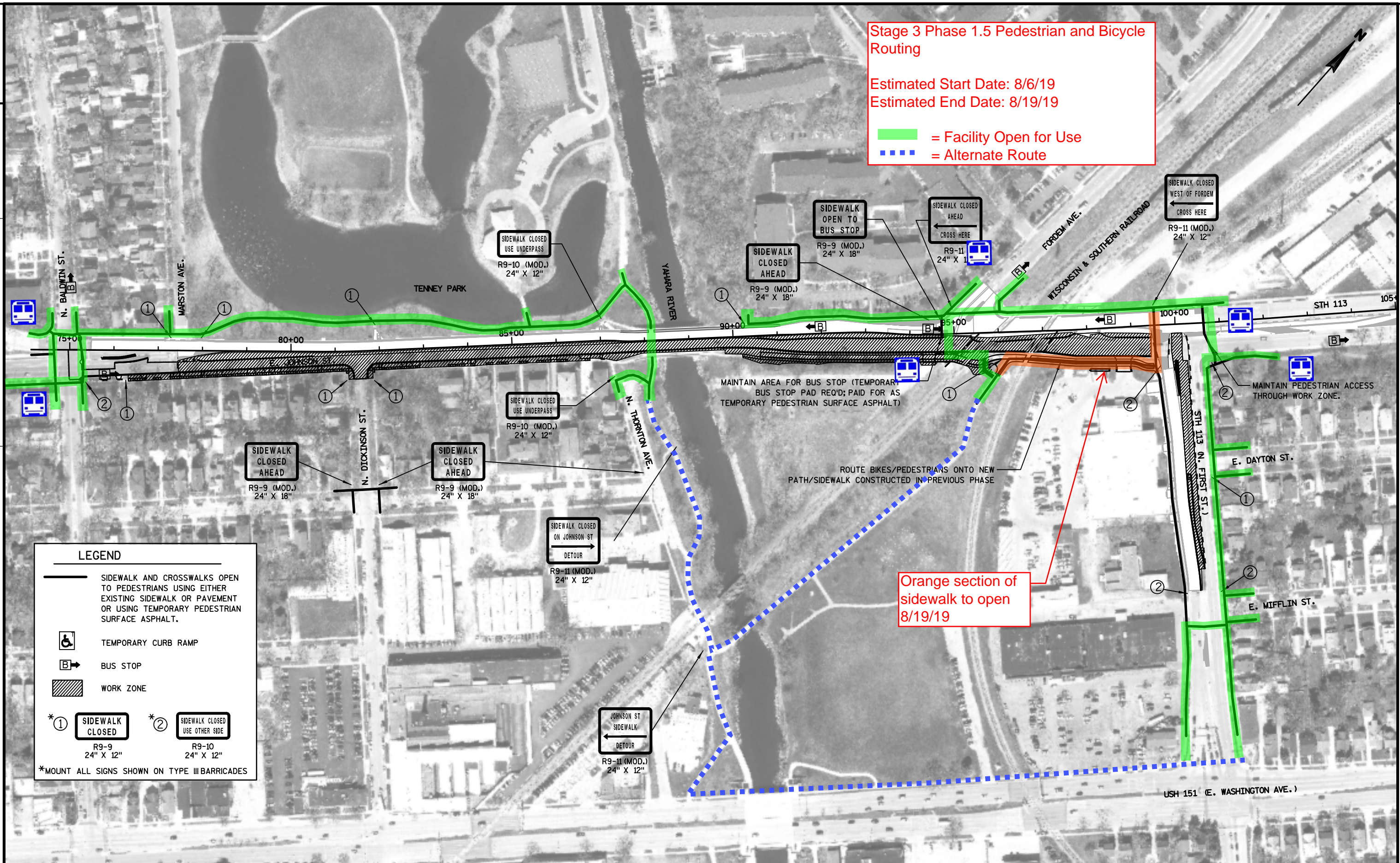


Stage 3 Phase 1.5 Pedestrian and Bicycle Routing

Estimated Start Date: 8/6/19
Estimated End Date: 8/19/19

- █ = Facility Open for Use
- ⋯ = Alternate Route



LEGEND

- SIDEWALK AND CROSSWALKS OPEN TO PEDESTRIANS USING EITHER EXISTING SIDEWALK OR PAVEMENT OR USING TEMPORARY PEDESTRIAN SURFACE ASPHALT.
- TEMPORARY CURB RAMP
- BUS STOP
- WORK ZONE
- SIDEWALK CLOSED**
R9-9 (MOD.)
24" X 12"
- SIDEWALK CLOSED USE OTHER SIDE**
R9-10 (MOD.)
24" X 12"

*MOUNT ALL SIGNS SHOWN ON TYPE III BARRICADES