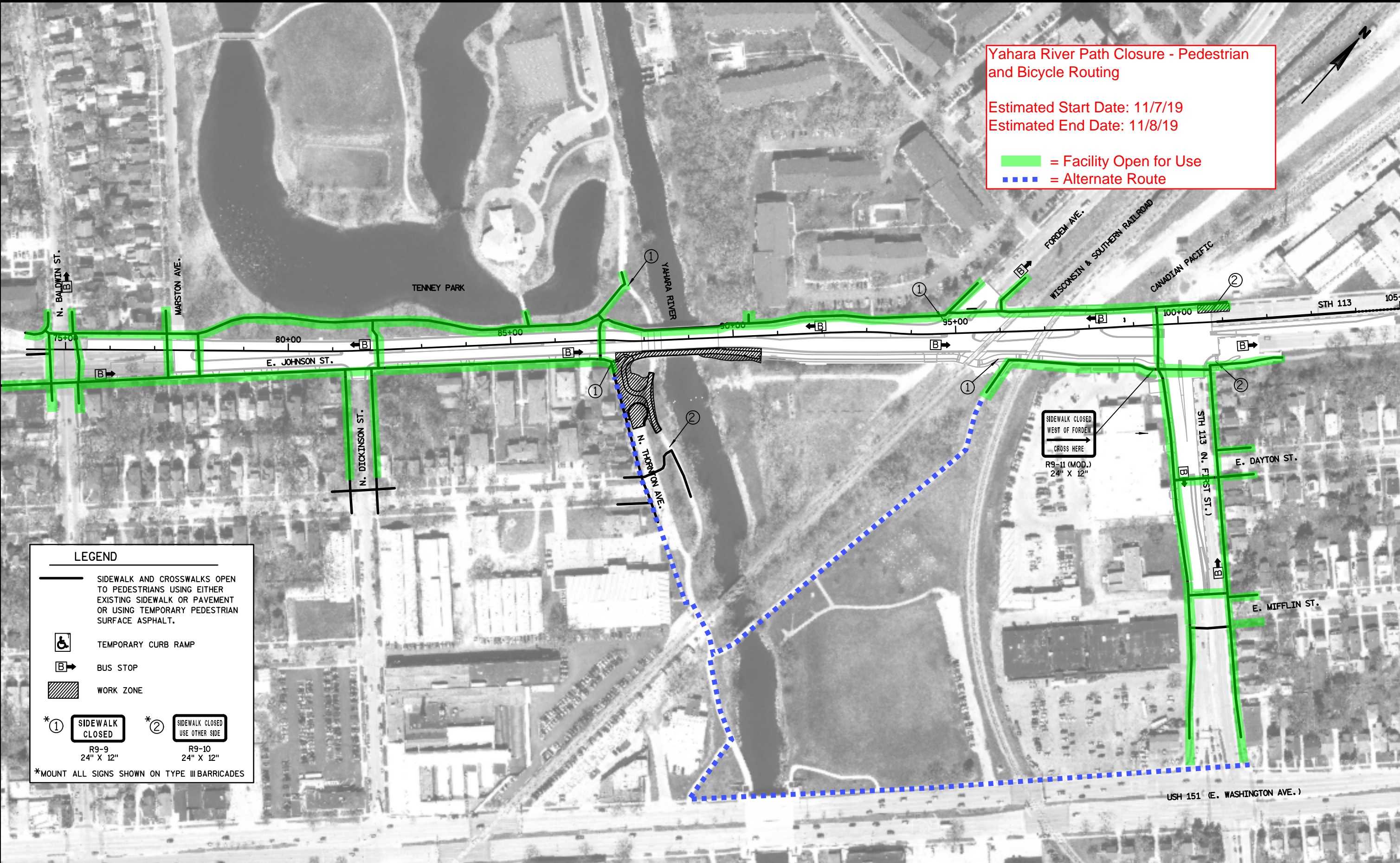


Yahara River Path Closure - Pedestrian and Bicycle Routing

Estimated Start Date: 11/7/19
 Estimated End Date: 11/8/19

█ = Facility Open for Use
▬▬▬ = Alternate Route



LEGEND

- SIDEWALK AND CROSSWALKS OPEN TO PEDESTRIANS USING EITHER EXISTING SIDEWALK OR PAVEMENT OR USING TEMPORARY PEDESTRIAN SURFACE ASPHALT.
- TEMPORARY CURB RAMP
- BUS STOP
- WORK ZONE
- SIDEWALK CLOSED**
R9-9
24" X 12"
- SIDEWALK CLOSED USE OTHER SIDE**
R9-10
24" X 12"

*MOUNT ALL SIGNS SHOWN ON TYPE III BARRICADES