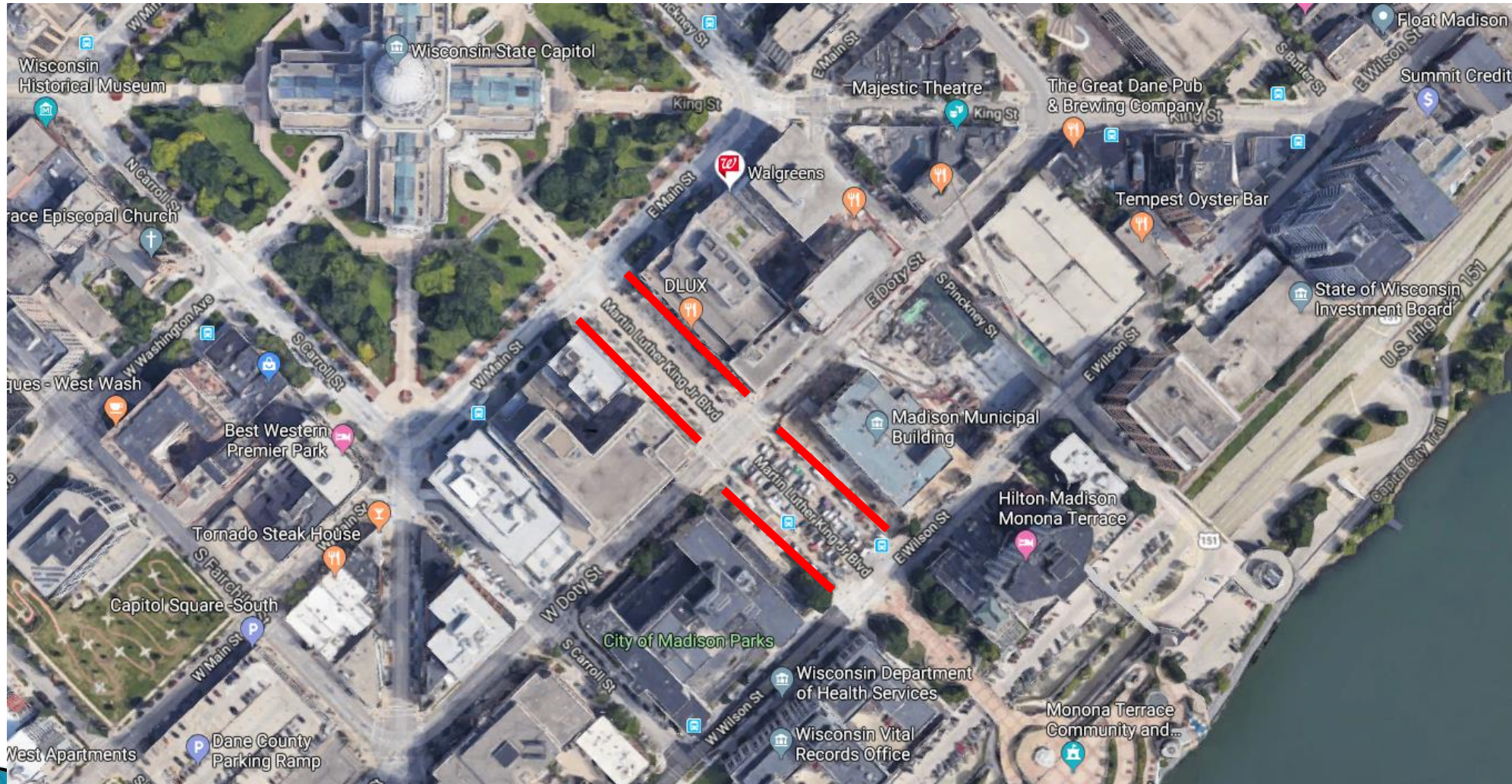




2020 Sidewalk & Terrace Reconstruction on MLK

**Public Involvement Meeting
by City of Madison Engineering Division
November 21, 2019**

Project Location



Existing Conditions

- ▶ Sidewalk
 - Combination of standard concrete with decorative pavers
 - Asphalt patching around the many offsets & joint failures
- ▶ Recent projects to reset pavers to fix trip hazards
- ▶ Street
 - Concrete Pvmnt rated 6/10
 - Curb rated 8/10



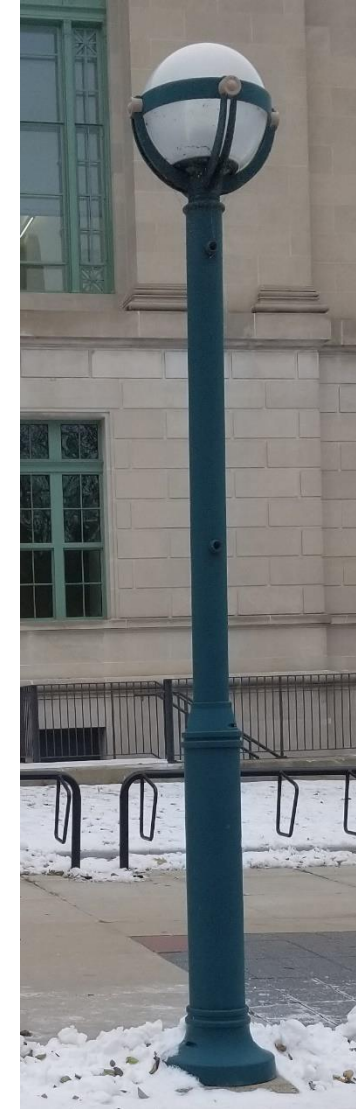
Existing Trees

- Planted in 2 rows
 - 79 Total trees (4 unplanted sites)
 - Mostly all ginkgos
- Poor growing environment
 - Poorly draining soil
 - Limited growth of trees
 - Low branches are problematic for pedestrians and events
- Frequent replacement of trees
 - Average 6 per year since 2008



Existing Street Amenities

- ▶ Lighting
 - Decorative pedestrian lights
 - City standard street lights
- ▶ Bike racks
 - Older racks near CCB
- ▶ B-cycle Station
- ▶ Benches
- ▶ Concrete Bollards
- ▶ Receptacles



Proposed Design

- Replace all of the sidewalk & terrace with standard and colored concrete sidewalk
- Remove the existing trees & grates and plant new trees in improved growing environment
- Spot pavement and curb repairs, as needed
- Replace street amenities
- Existing street lights are planned to remain
 - Reviewed for potential replacement of pedestrian lighting, but not currently budgeted with this project

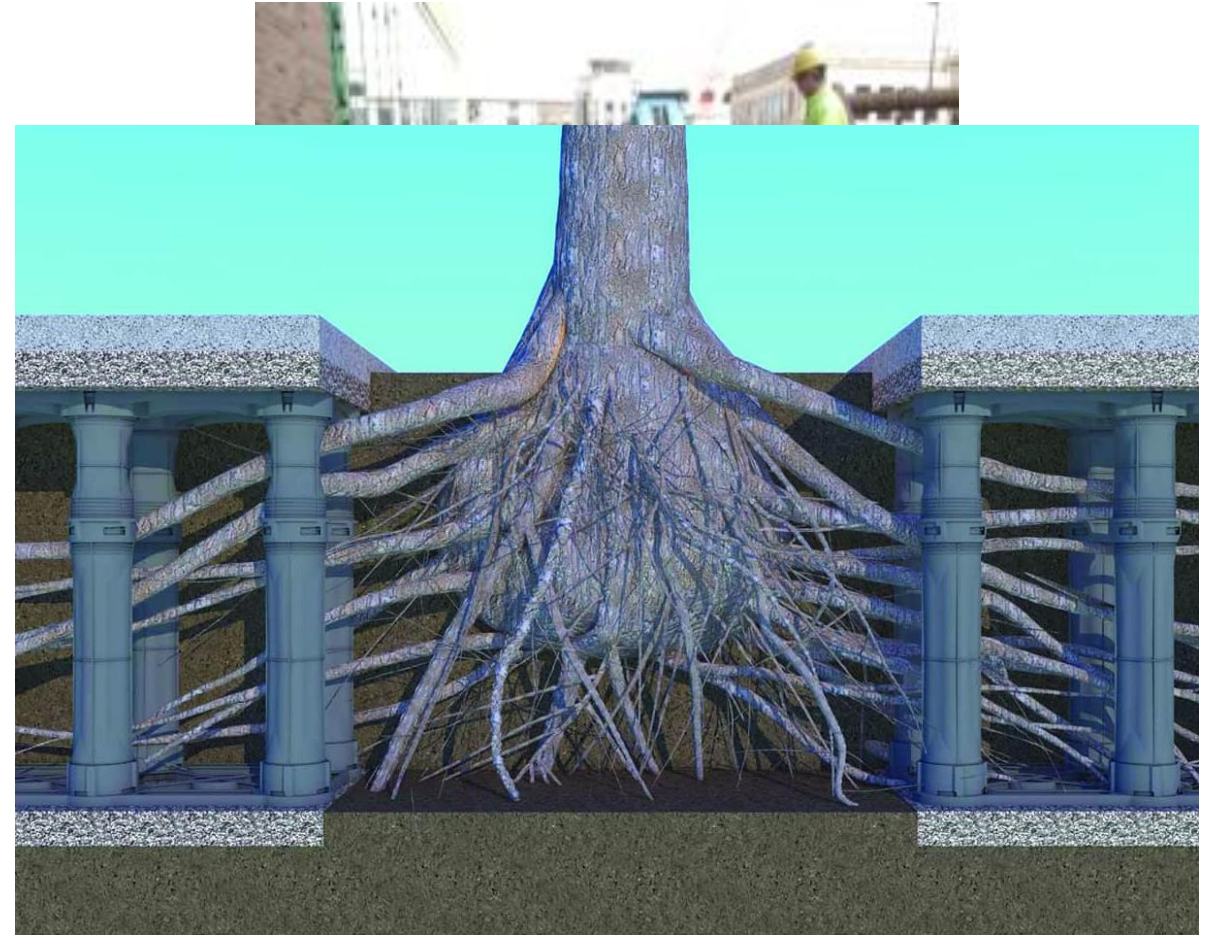
Sidewalk Replacement

- Mainline sidewalk replaced with standard concrete
- Replace pavers with colored concrete
 - Longer lasting, easier to maintain



Improved Tree Planting Sites

- Install terrace support system
 - Provide more soil volume while keeping pedestrian space
- Install drainage system
- Goal of larger growing trees
- City standard tree grates
- Tree guards on new plantings to protect



Additional Tree Planting Info

- Include plantings with project
 - Trees typically planted by City Forestry following construction
 - Delay plantings until Fall if weather uncooperative or if project extends to far into summer
- Diversify with minimum of 2 species per block
 - Try to match leaf types for more consistent aesthetic
 - Final species selection by City Forestry



Other Improvements

- Lighting of Martin Luther King Jr. Monument at MMB
- New bike racks at CCB
 - Keep at least the same number
 - Look for opportunities to add more
- Replace other amenities
 - Bollards, benches, trash receptacles
- Possible art in center of MLK



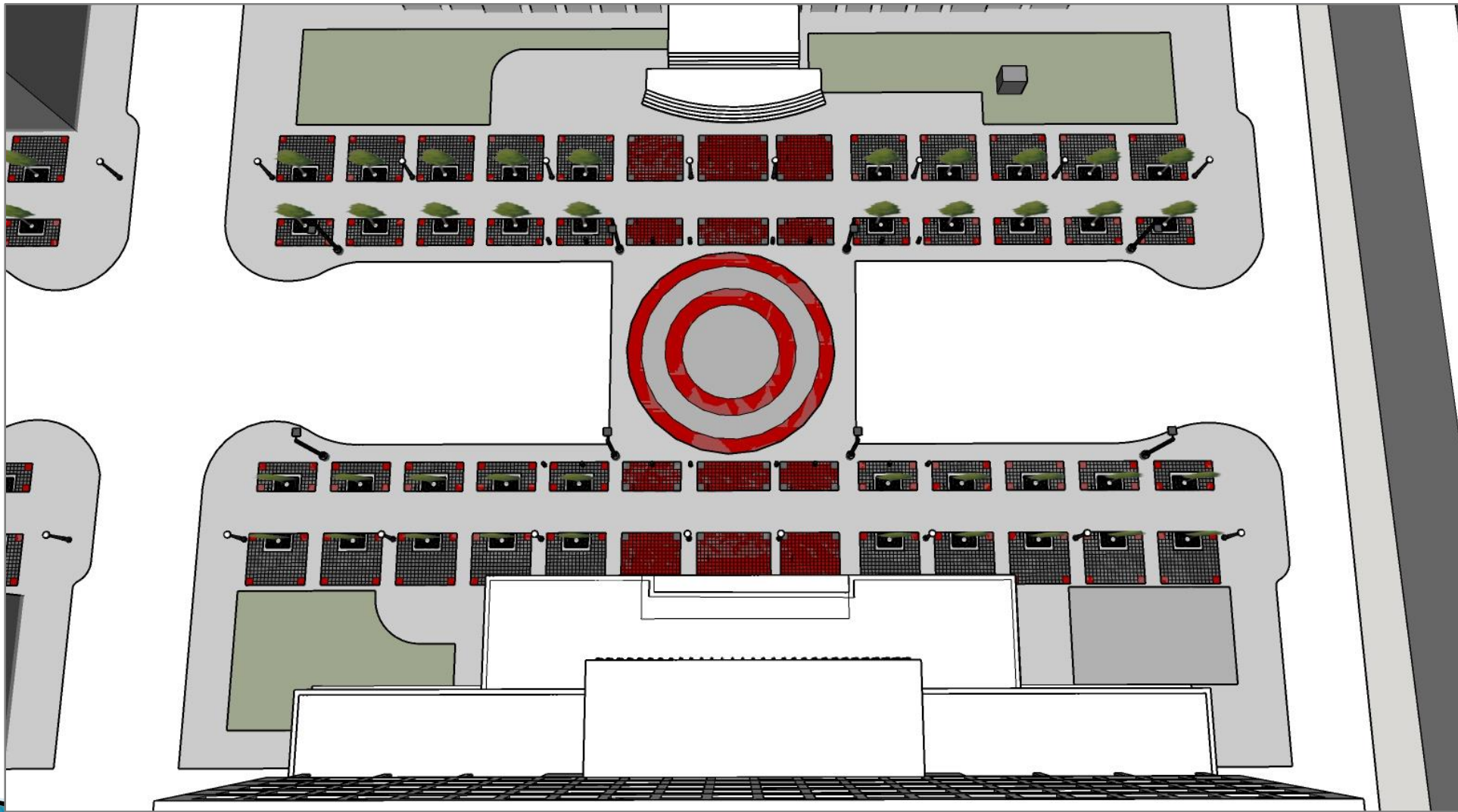
Design Options

- Option 1: single row of trees on building side of sidewalk
 - Approximately 40 trees at 20 ft. spacing
 - Allows for easier maintenance, use for events, and space for bike racks
- Option 2: two rows of trees, in line
 - Approximately 48 trees at 40 ft. spacing and 16 ft. between rows
 - Maintains similar layout as today, but with more space between trees
- Option 3: two rows of trees, staggered
 - Approximately 42 trees at 40 ft. spacing
 - Allows for a little more space for tree canopy growth where not intertwining with adjacent trees

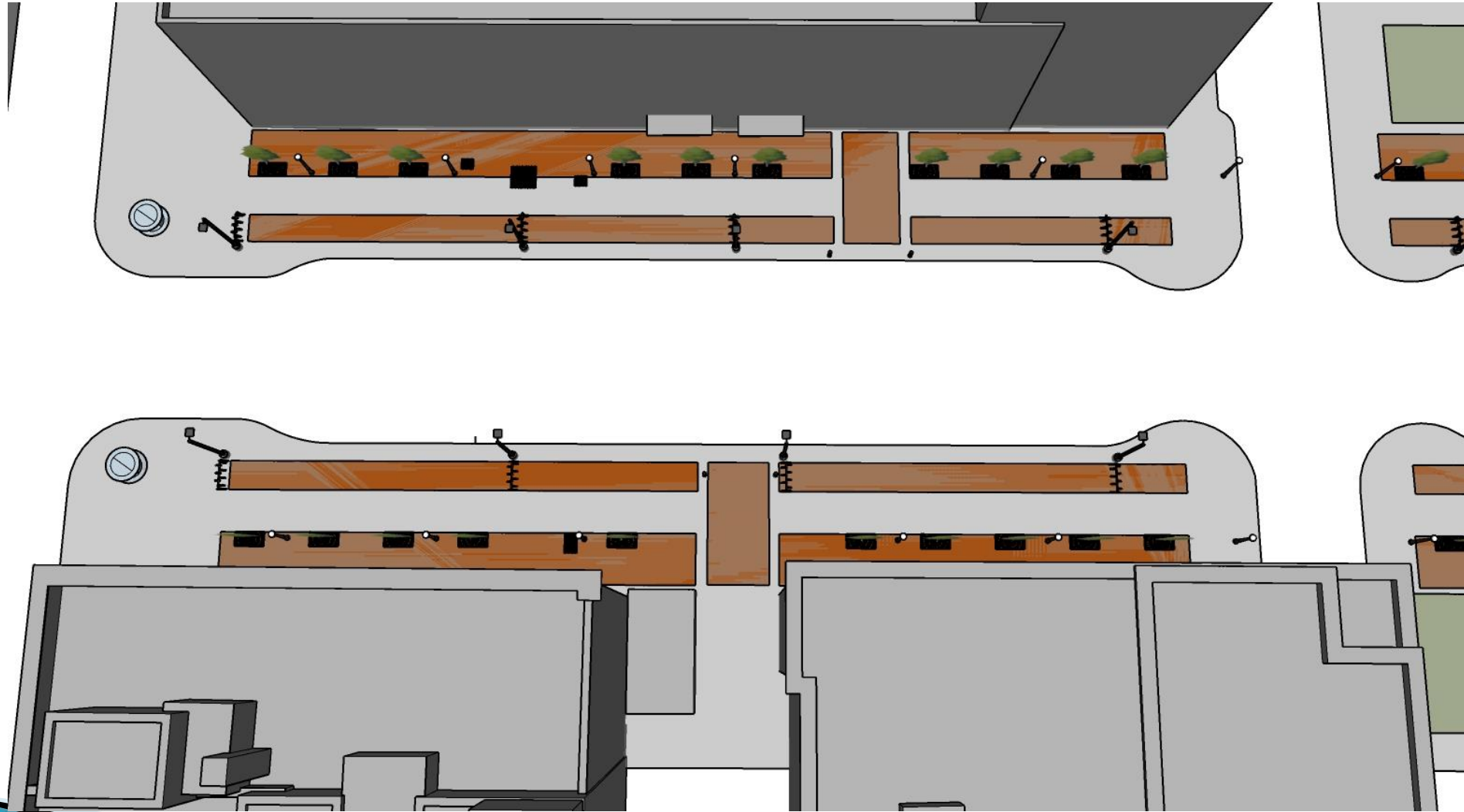
Existing Overview – 100 Block



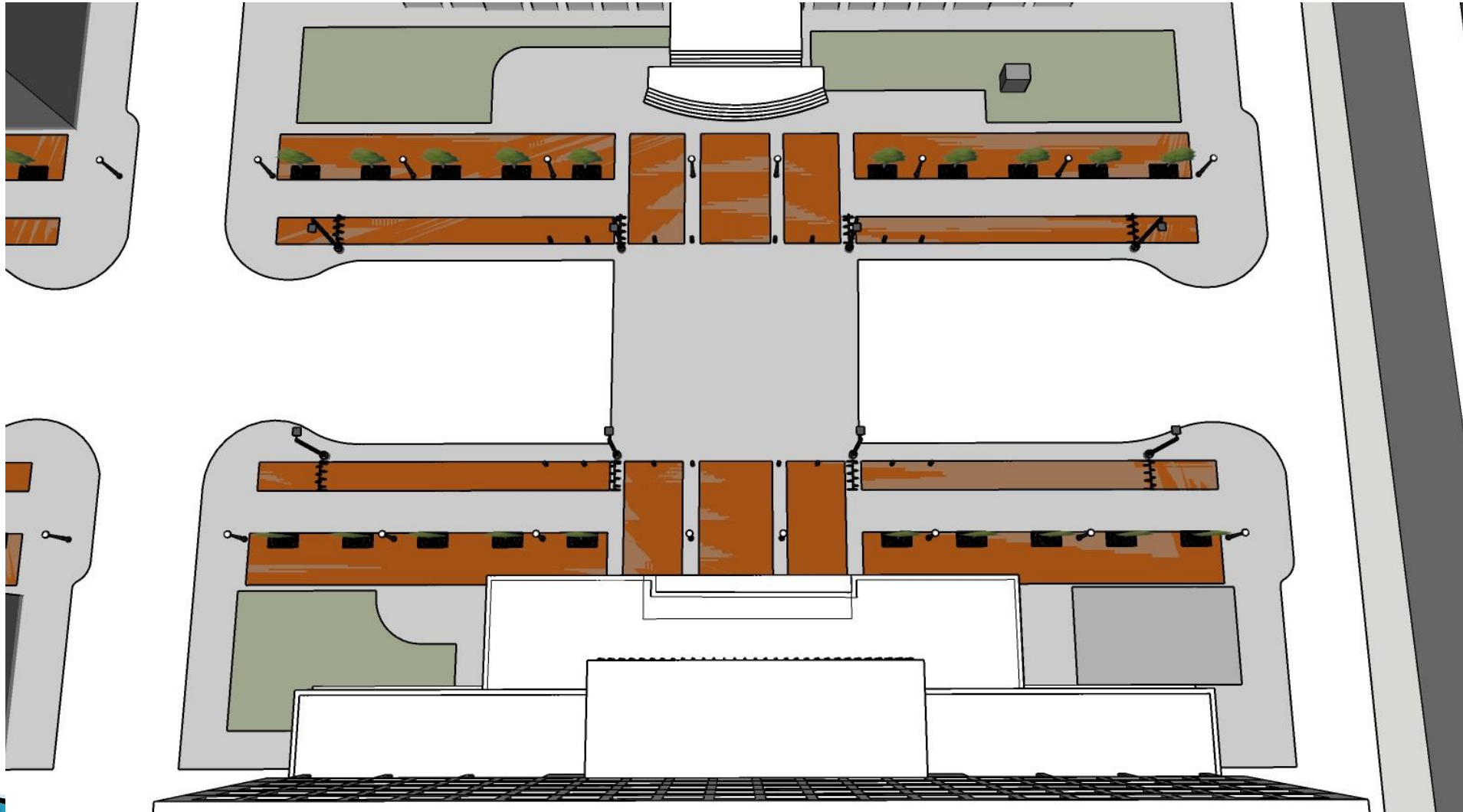
Existing Overview – 200 Block



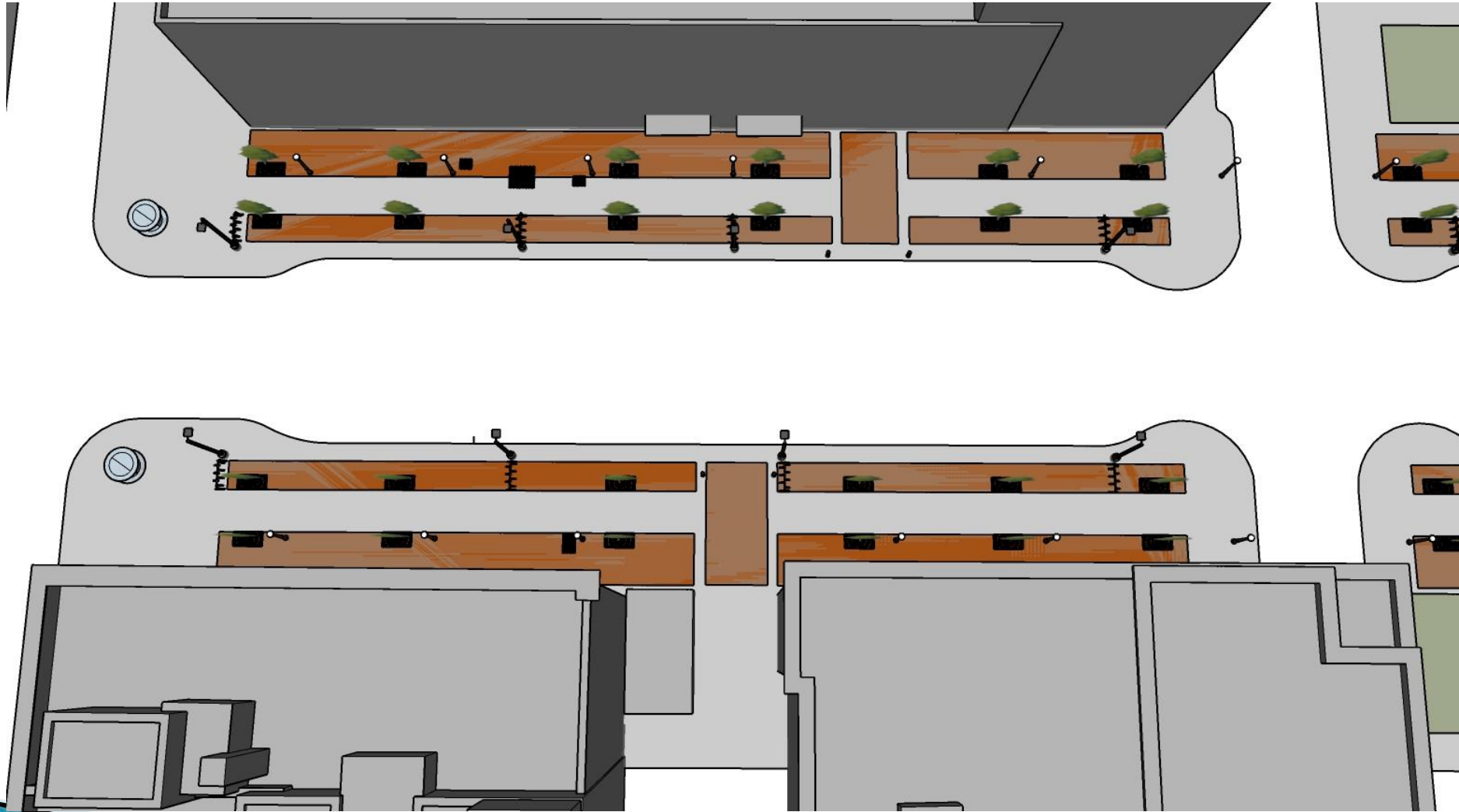
Option 1 Overview – 100 Block



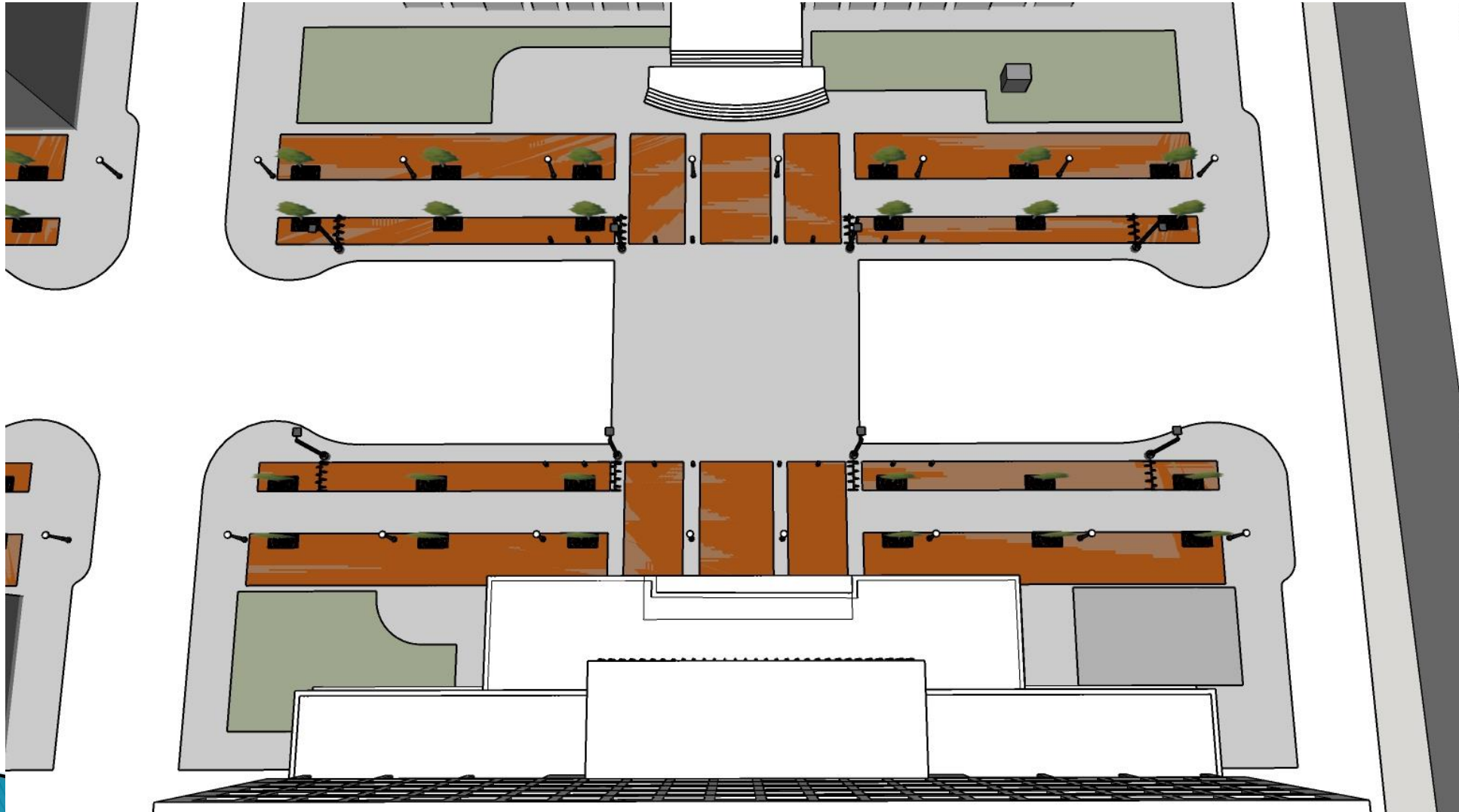
Option 1 Overview – 200 Block



Option 2 Overview – 100 Block



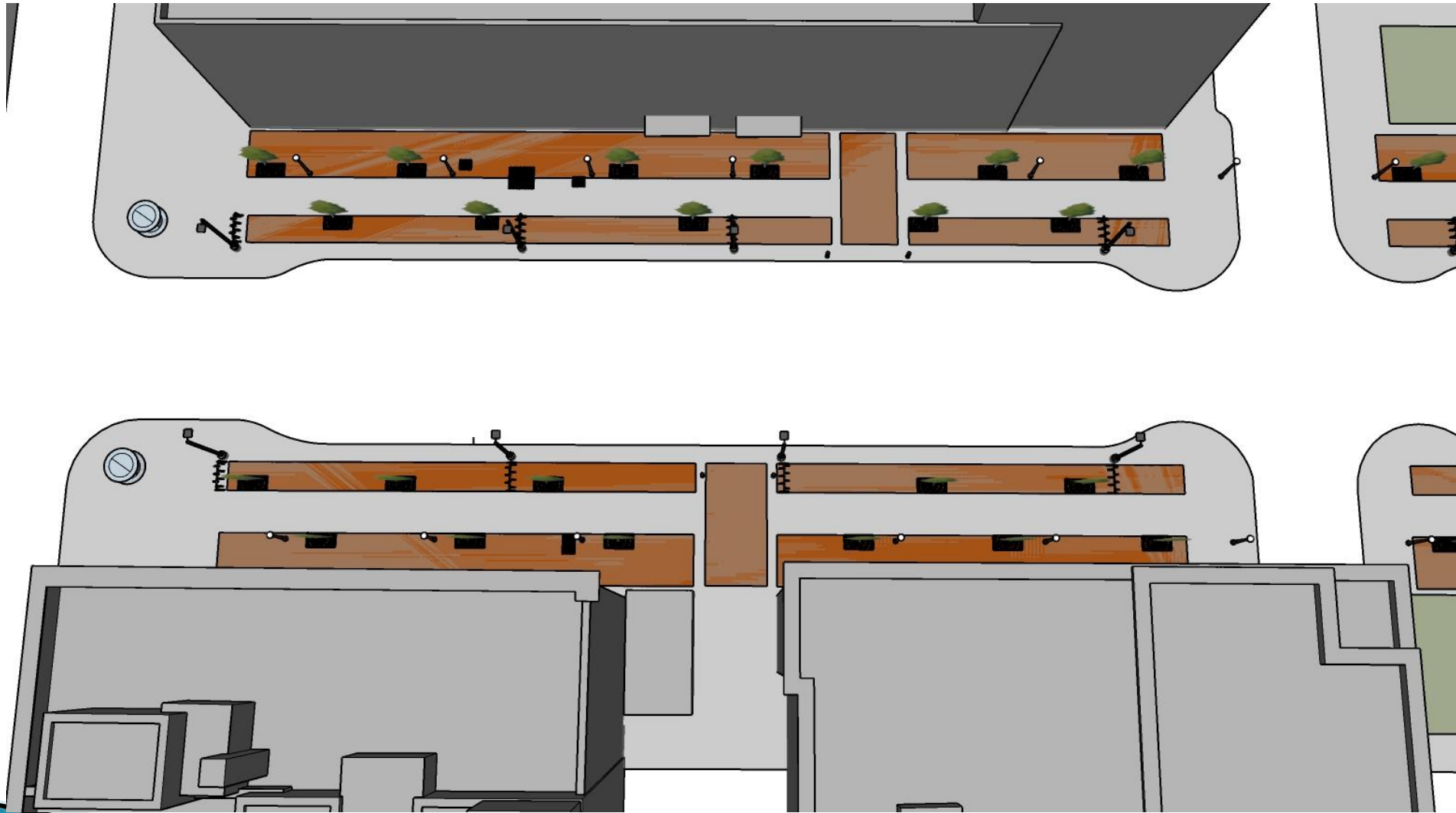
Option 2 Overview – 200 Block



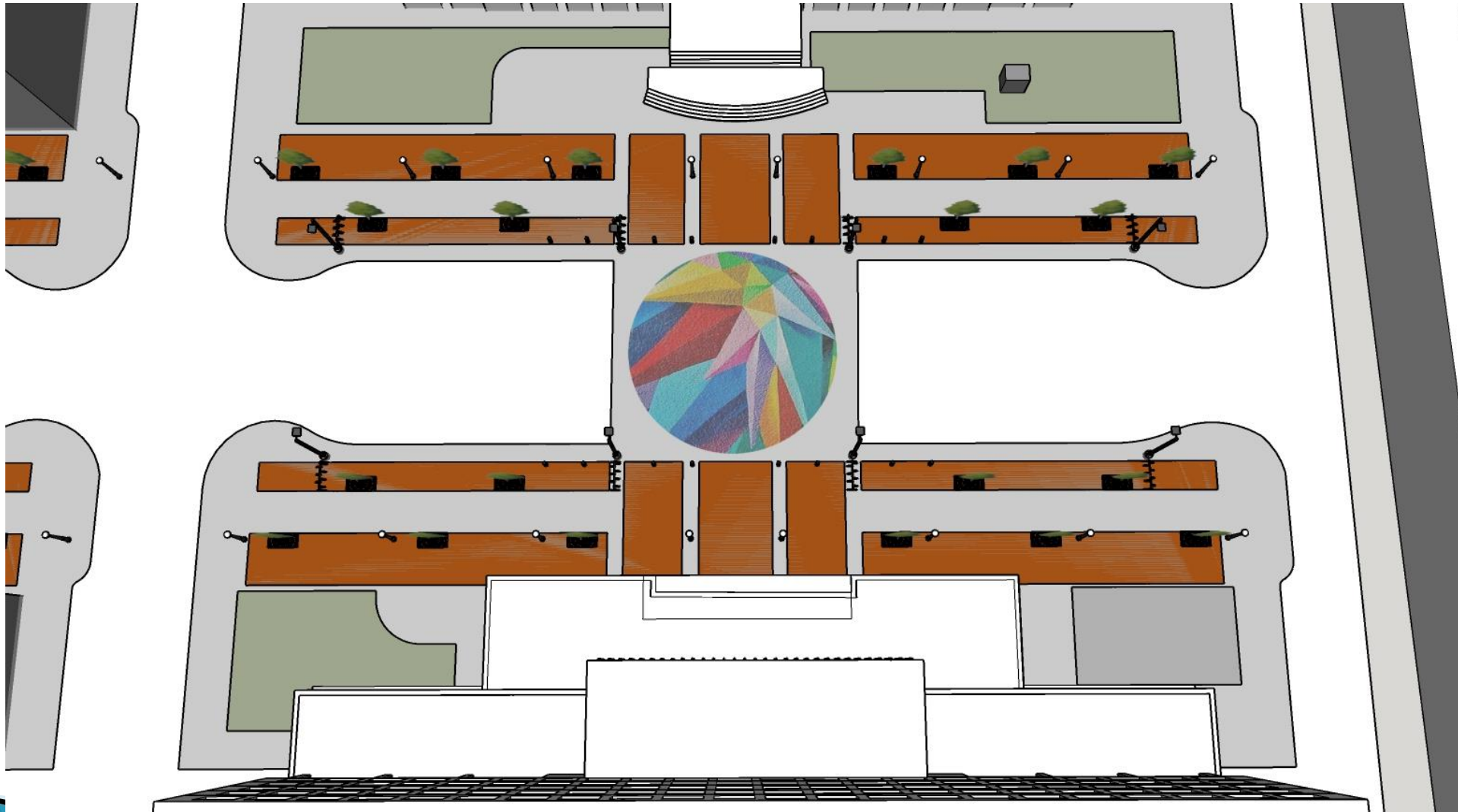
CITY OF MADISON



Option 3 Overview – 100 Block



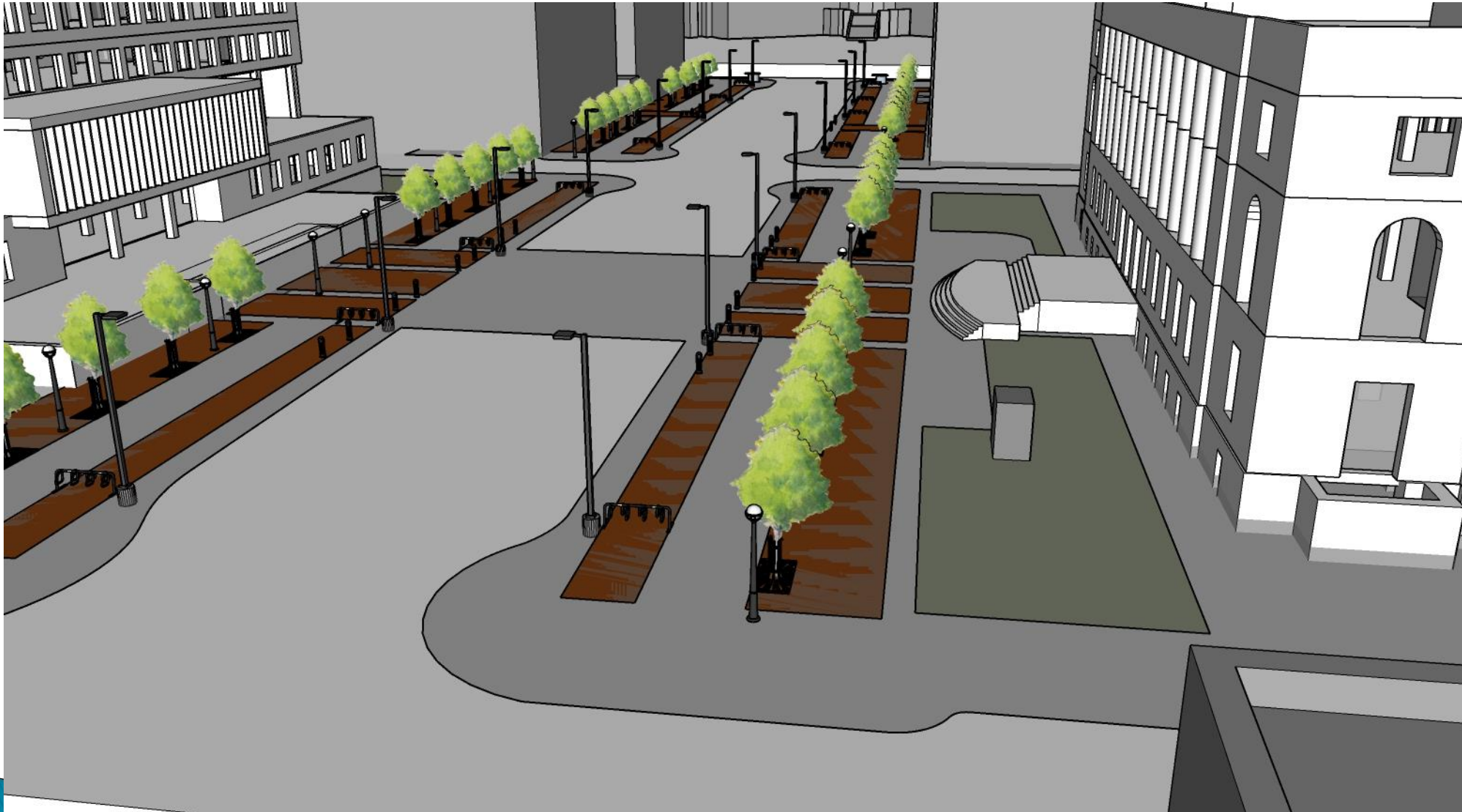
Option 3 Overview – 200 Block



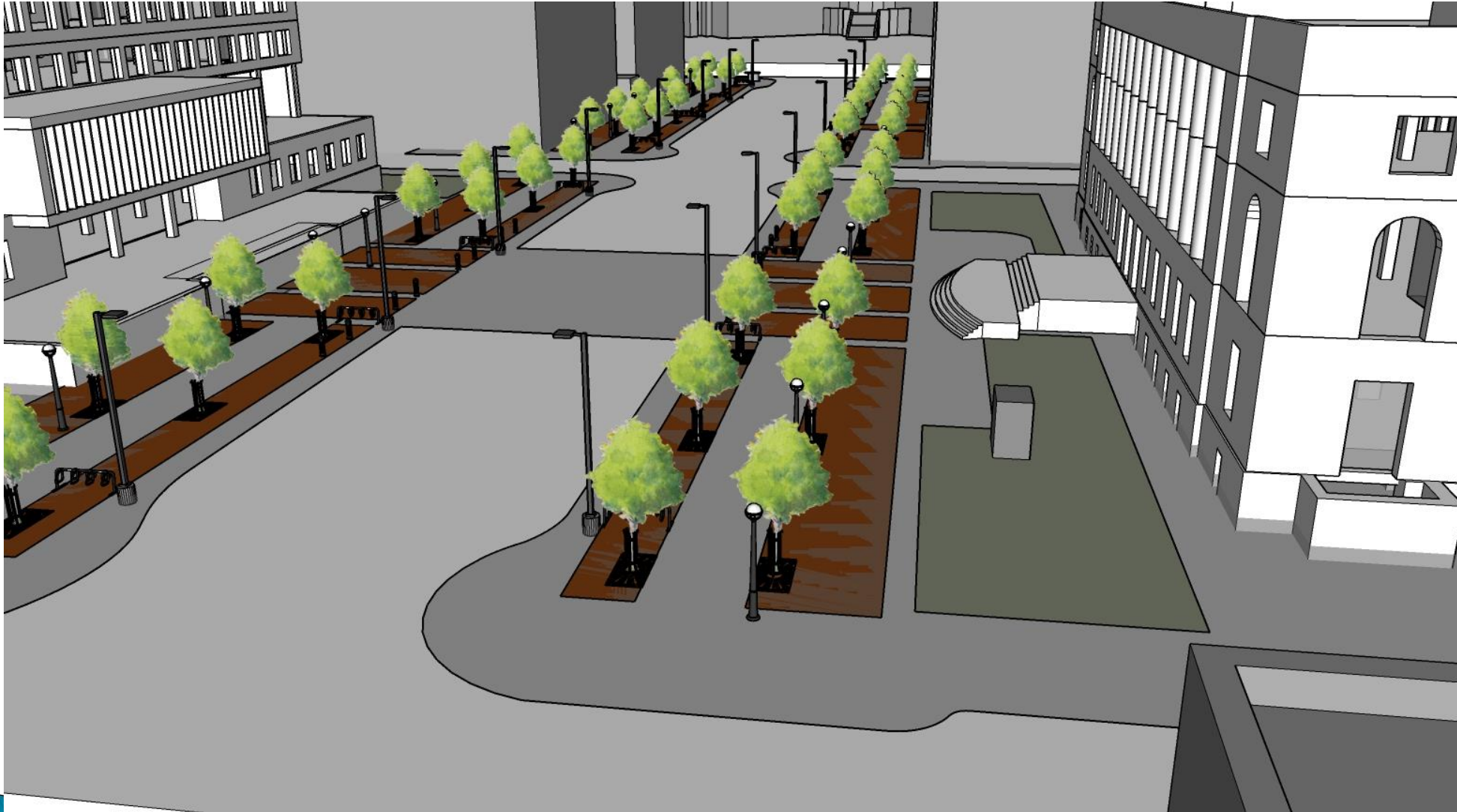
Existing



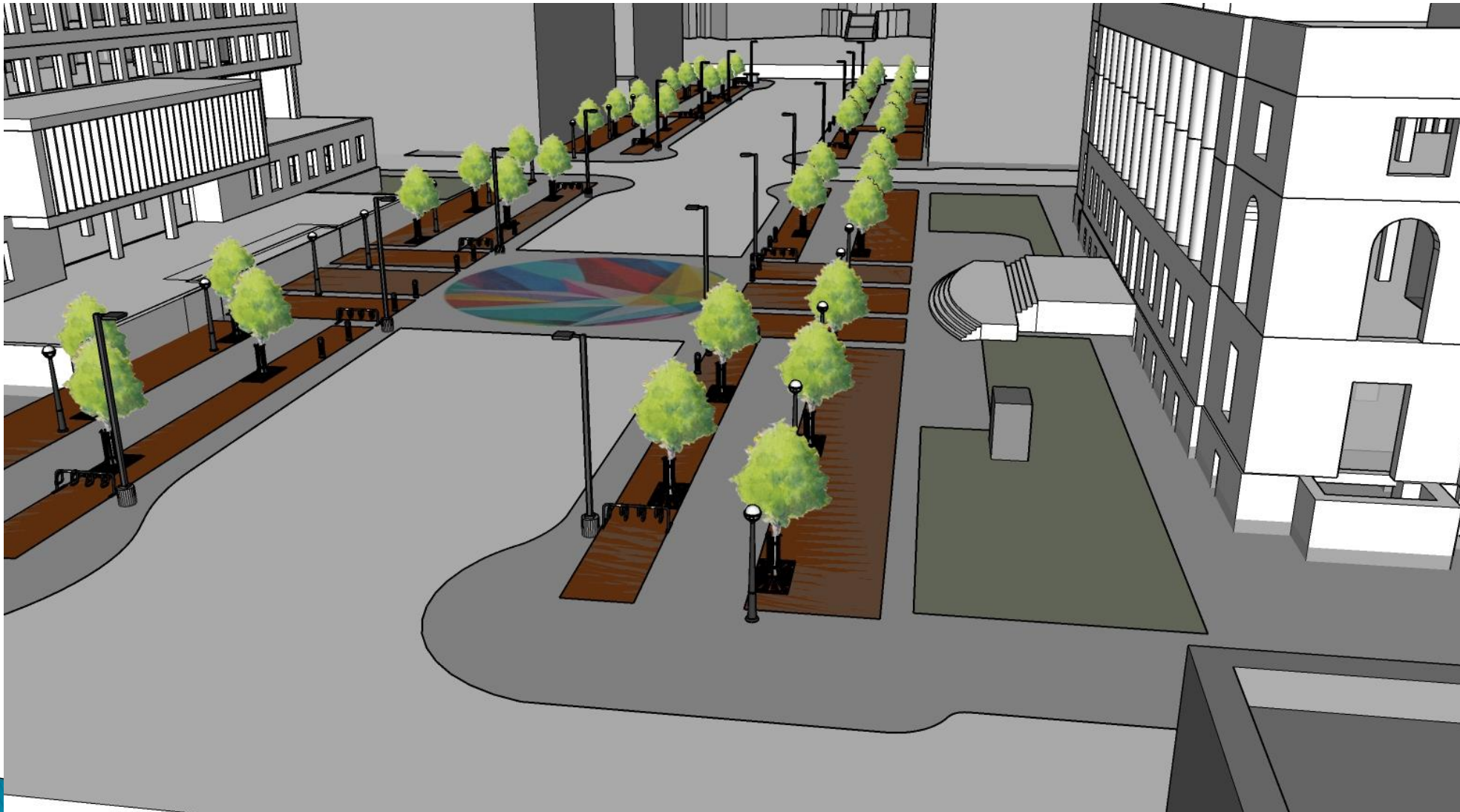
Option 1



Option 2



Option 3



Existing



Option 1



Option 2



Option 3



Solar Electric Vehicle Charging Station

- Pilot project of solar vehicle charging station
- Prominent location
 - Possibly MLK or Wilson
 - Parking Utility Manager recommended installation in Brayton Lot, off E. Washington



Construction & Access

- Construction expected to begin in April
- 1 side of MLK under construction at a time, on both blocks
 - Approximately 6–7 weeks to work on each side
 - Start work on CCB side
 - Parking removed on the side under construction
- Maintain sidewalk access
 - Narrowed or temporary sidewalk around construction area
 - Coordinate with Metro on temporary bus stop location
- Coordinate with events/uses
 - Farmer's Market
 - Temporary locations for food carts

Assessment Policy & Costs

- Costs to replace mainline sidewalk (center portion, between trees) shared 50/50 between City and adjacent property owner
- Costs of colored concrete, tree grates, tree plantings, replacement of amenities, etc. paid by the City
- Total project costs – approximately \$1,300,000
 - Option 1 is least expensive
 - Option 2 is most expensive

Project Schedule

- 12/27/19: Mail Estimated Assessments, Public Hearing Notice
- 1/8/20: BPW Public Hearing
- 1/21/20: Common Council Hearing
- 4/13/20: Begin Construction (try for earlier if weather permits)
- 7/9/20: End Construction
 - Goal is to complete construction prior to Art Fair

Contact Information & Resources

➤ City Staff

- Jim Wolfe, City Engineering, 266-4099 or jwolfe@cityofmadison.com
- Rebecca Cnare, City Planning, 266-4957 or rcnare@cityofmadison.com
- Marla Eddy, City Forestry, 266-4450, or meddy@cityofmadison.com

➤ Website: cityofmadison.com/engineering/projects/martin-luther-king-jr-blvd

- Sign-up for project email updates on the website
- Updates on closures & work progress will be posted to the project website

➤ Facebook – City of Madison Engineering

Discussion/Input

- Preferred option for tree layout
 - Option 1 – single row
 - Option 2 – 2 rows, in-line
 - Option 3 – 2 rows, staggered
- Colored concrete (natural bark)
- Possible art in center of 200 block
- Replacement of pedestrian lighting
- Solar electric vehicle charging station
- Other schedule/construction considerations