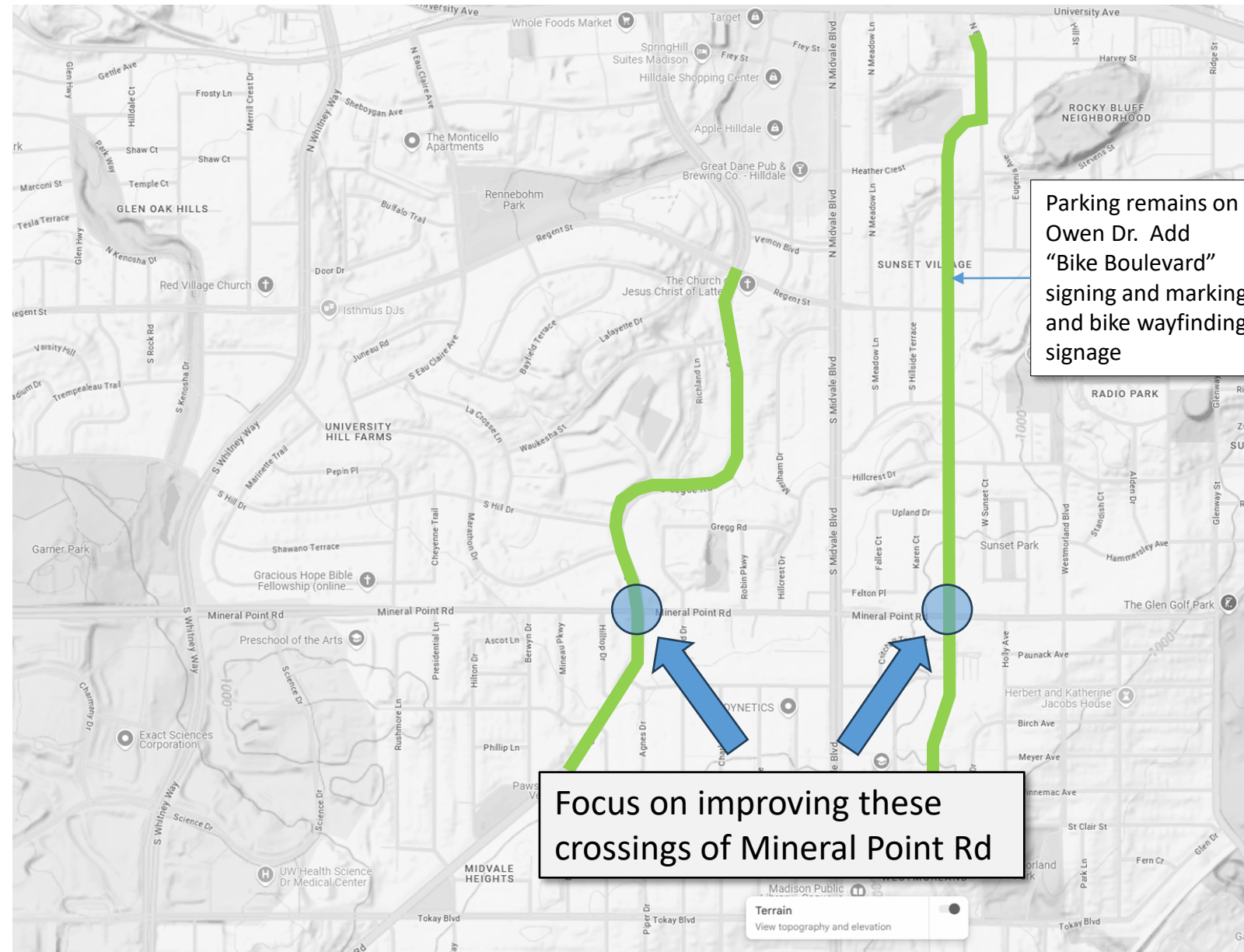


Option 3: Improve Segoe Rd & Owen Drive as alternative north/south bike routes to Midvale Blvd



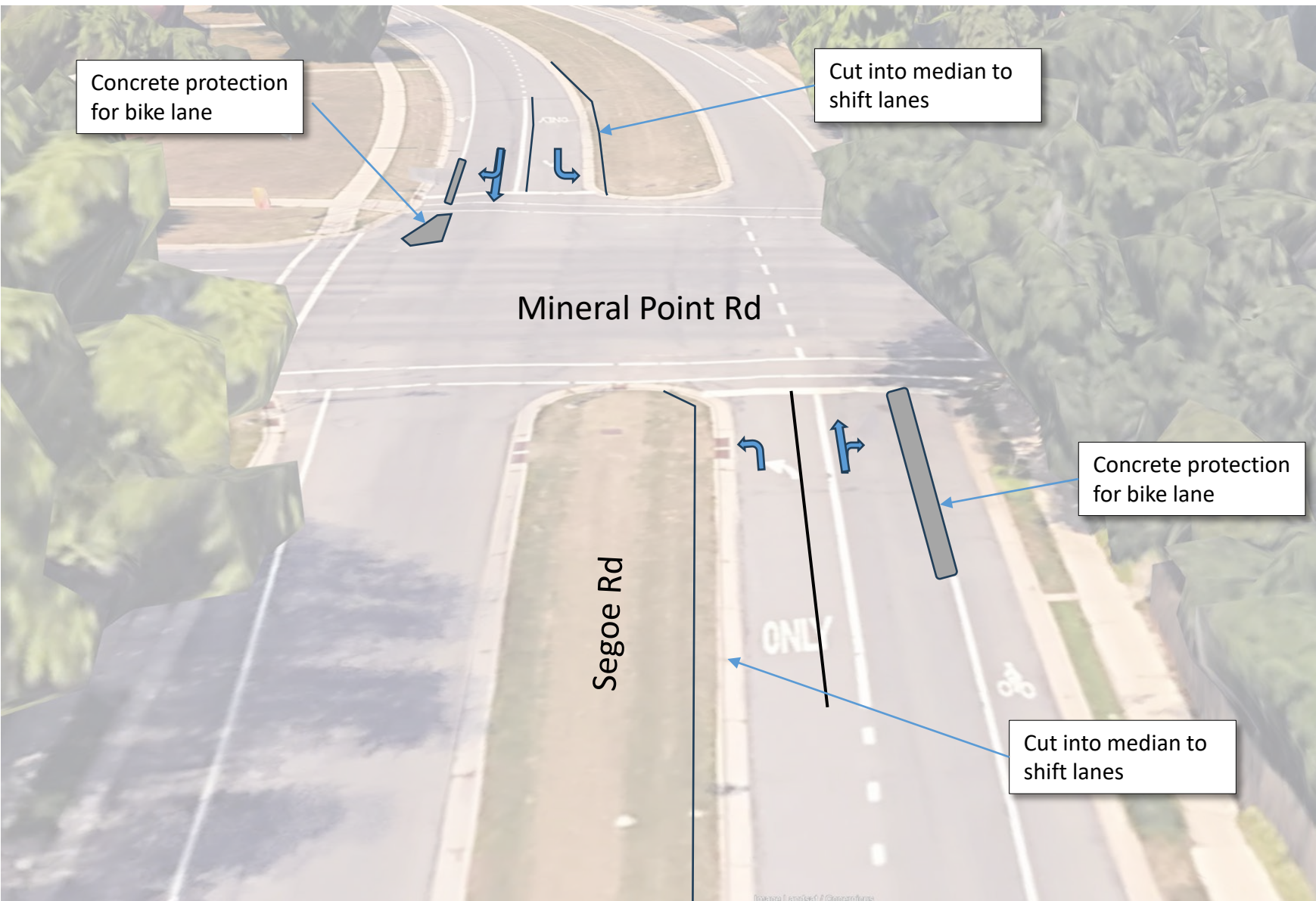
Pros:

- Maintains all parking on Midvale Blvd for residents
- Less expensive option for now, and can still look for permanent Midvale Blvd redesign in the future during a reconstruction
- Can improve Segoe Rd & Owen Dr through signing, pavement markings, and improvements to cross Mineral Point Road (investigate protected intersections)
- Can add larger bumpouts at pedestrian crossings

Cons:

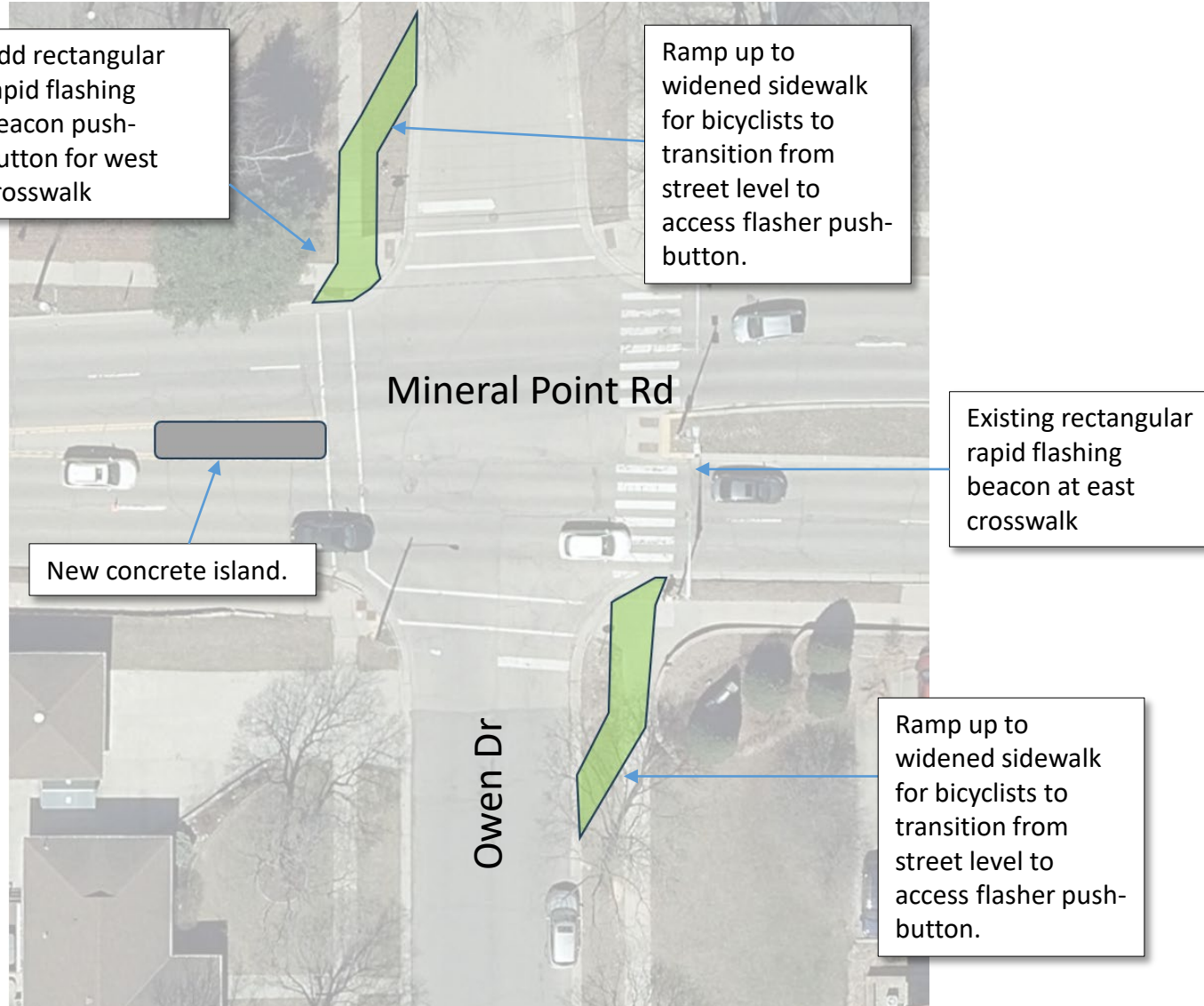
- Midvale Blvd remains as a high-stress, poor bike option

Option 3: Improve Segoe Rd & Owen Drive as alternative north/south bike routes to Midvale Blvd



- This is a concept plan to add concrete protection for bicyclists travelling north/south on Segoe Rd at the Mineral Point Rd intersection.
- Additional investigation would be needed for feasibility and cost estimate.

Option 3: Improve Segoe Rd & Owen Drive as alternative north/south bike routes to Midvale Blvd



- This is a concept plan to transition bicyclists from the street up onto the sidewalk to push the rectangular rapid flashing beacon button. A push-button would be added for the west leg of the intersection for southbound bicyclists.
- Additional investigations would be needed for feasibility and cost estimate.