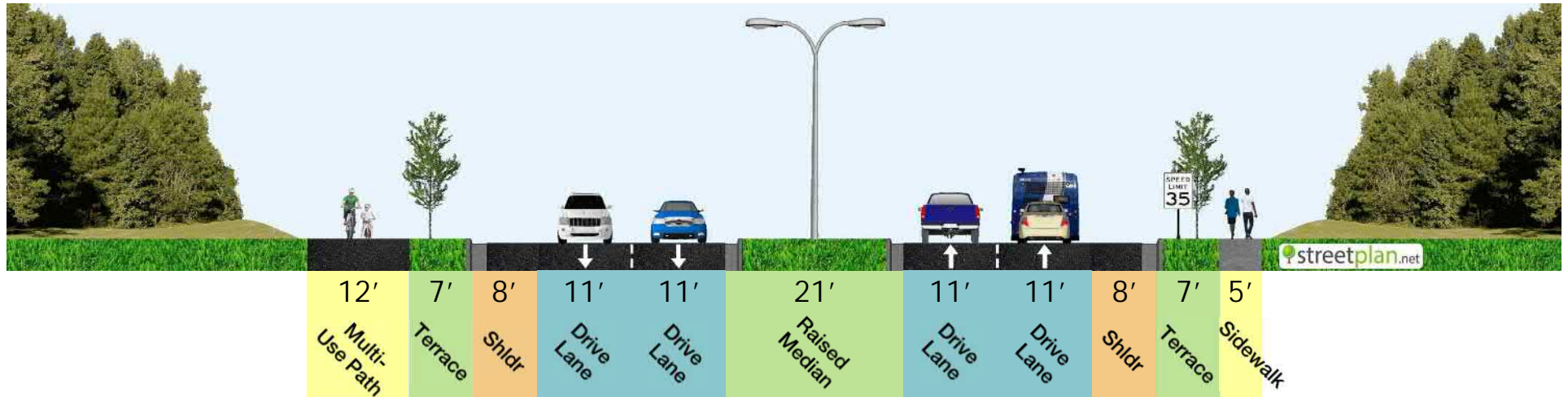
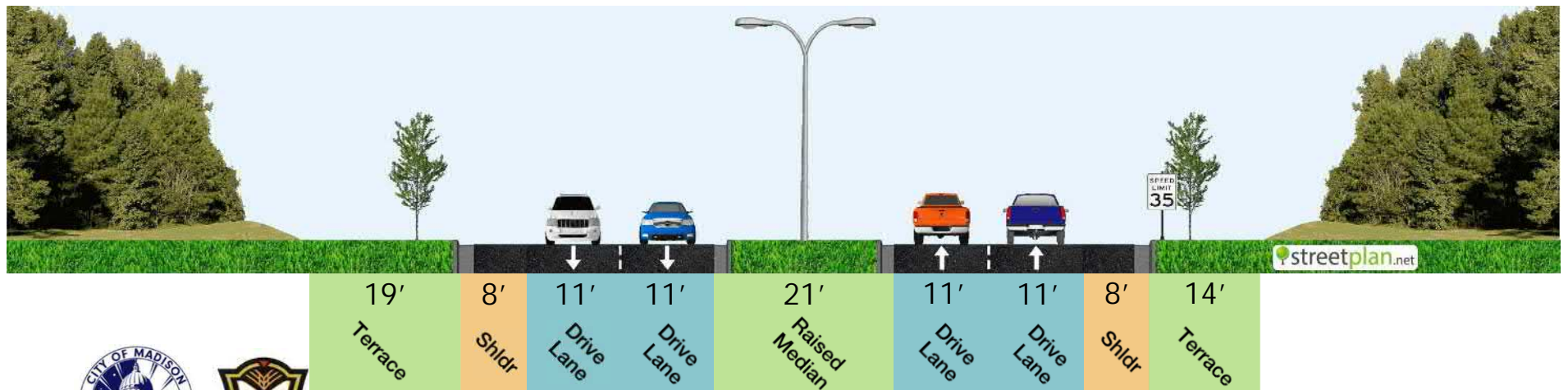


Roadway Typical Section – Mineral Point Rd to Blackhawk Rd

With Multi-Use Path and Sidewalk

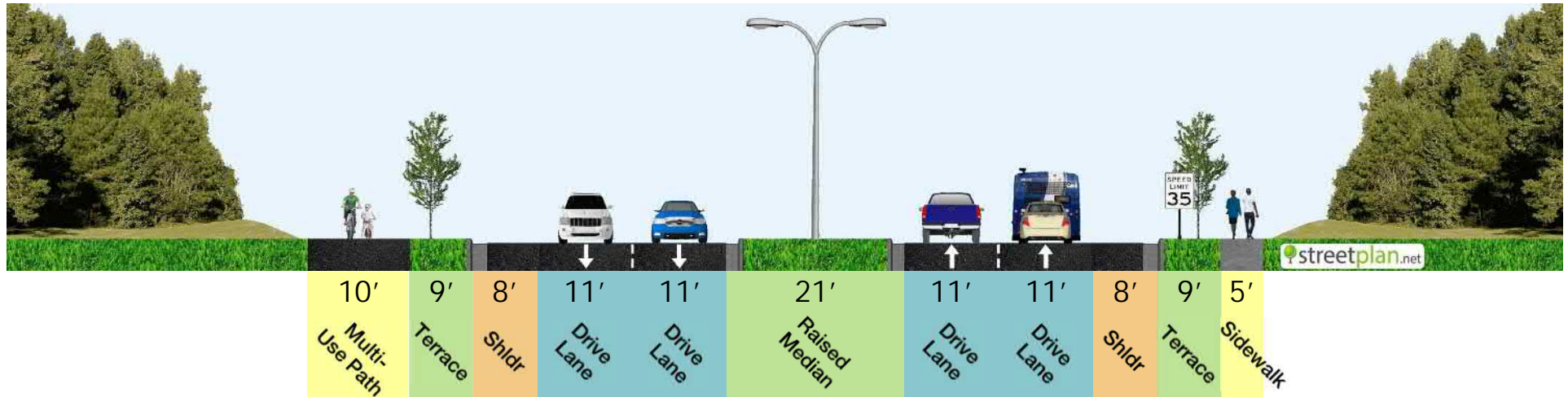


Without Multi-Use Path and Sidewalk

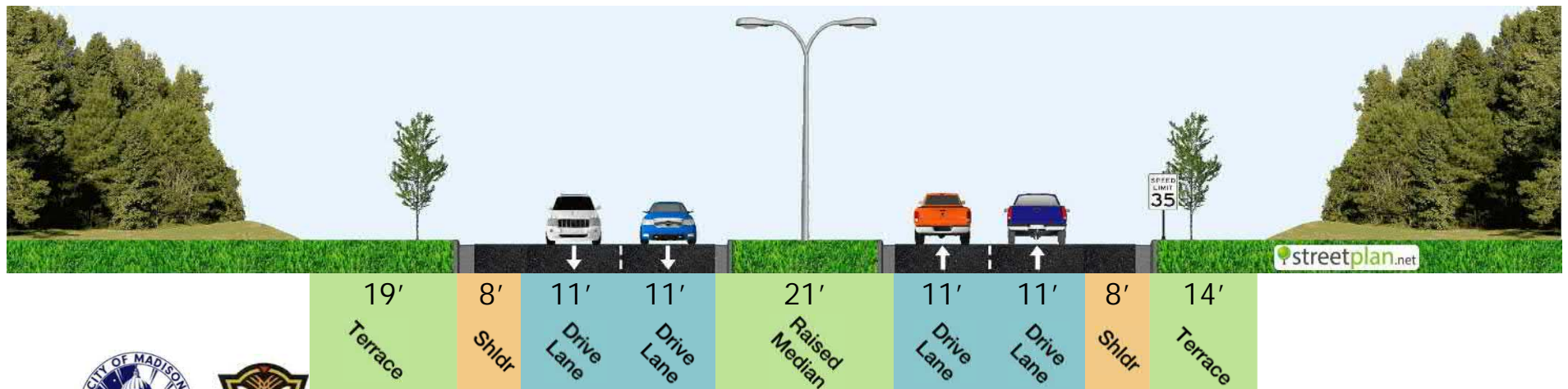


Roadway Typical Section – Blackhawk Rd to US 14

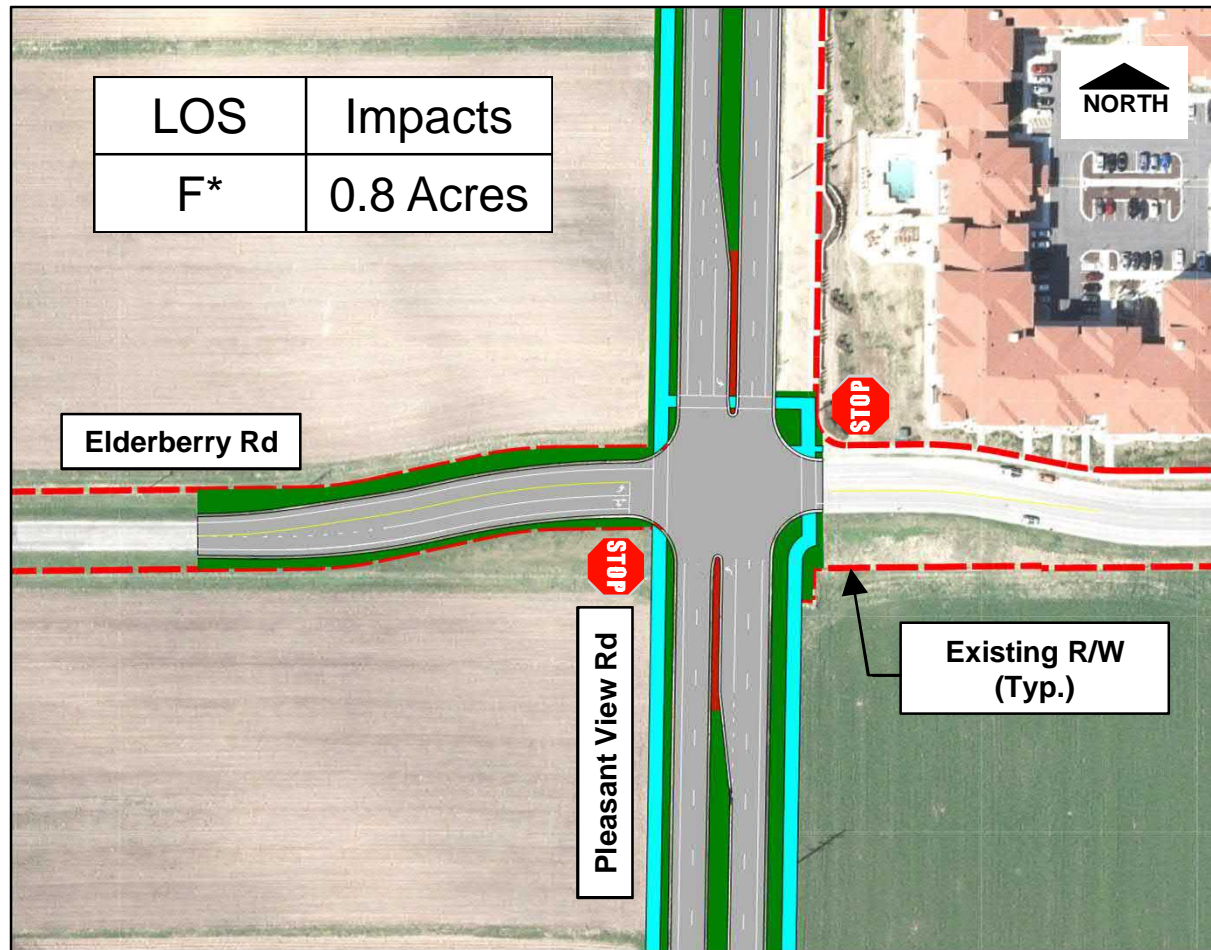
With Multi-Use Path and Sidewalk



Without Multi-Use Path and Sidewalk



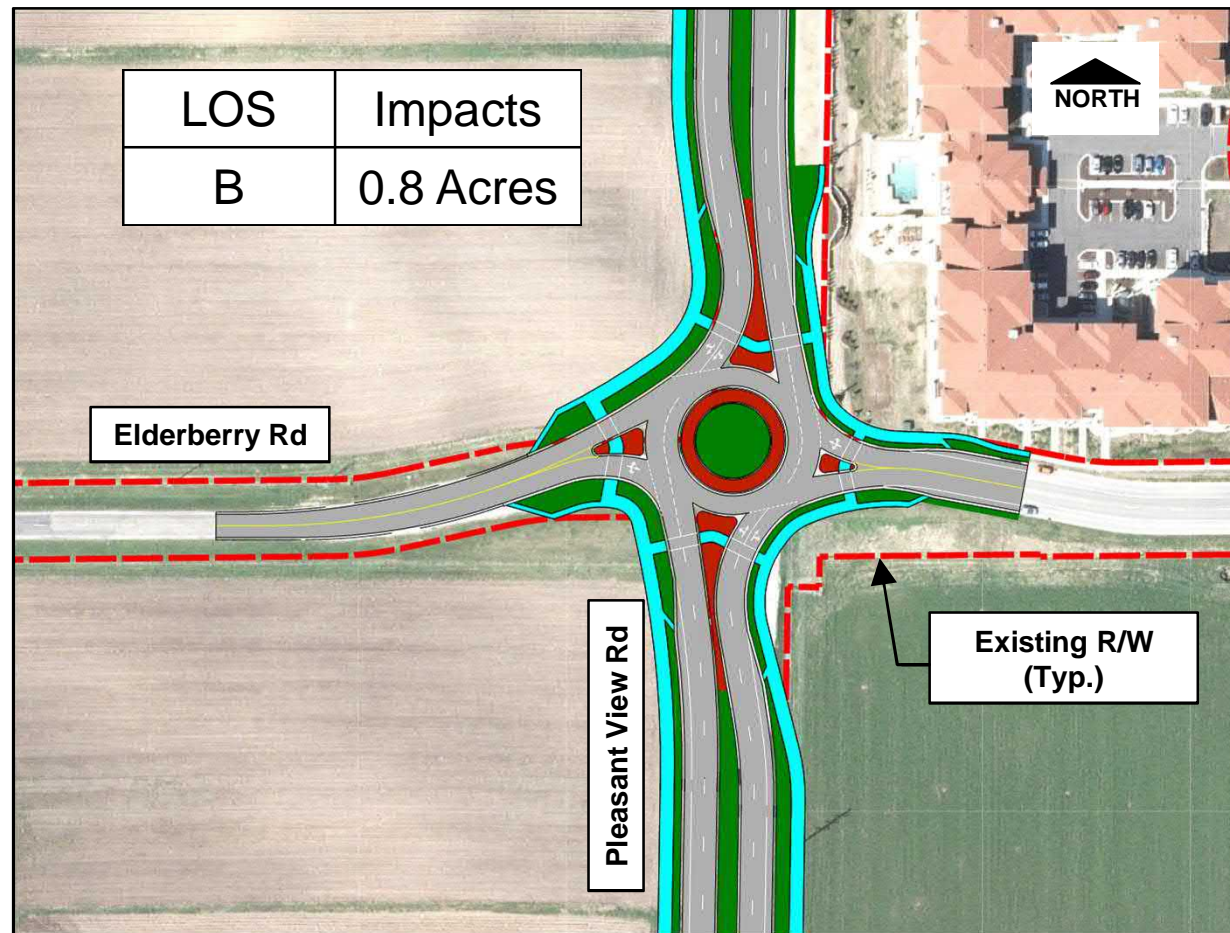
Elderberry Road – Revised Two-Way Stop Control Alternative



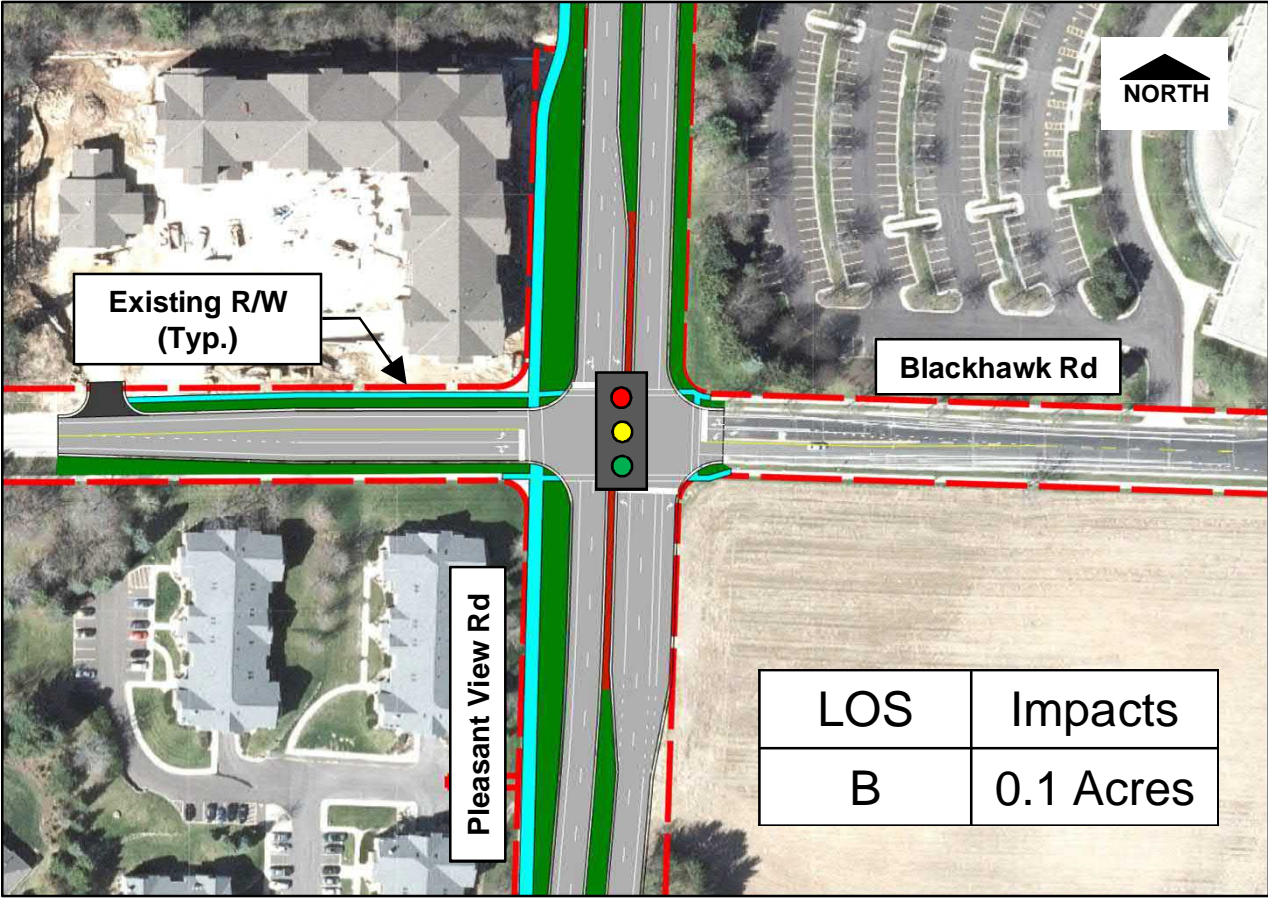
*LOS A when signalized
(and meets traffic signal warrants)



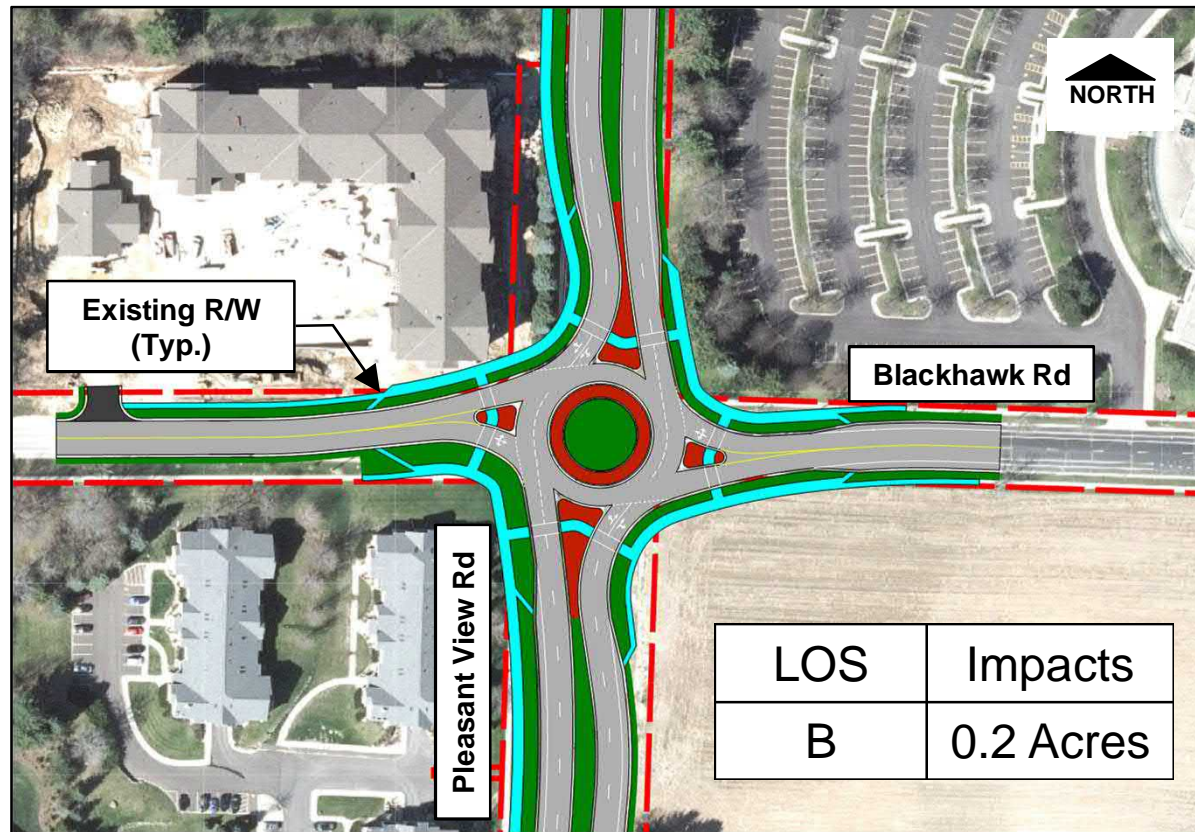
Elderberry Road – Roundabout Alternative



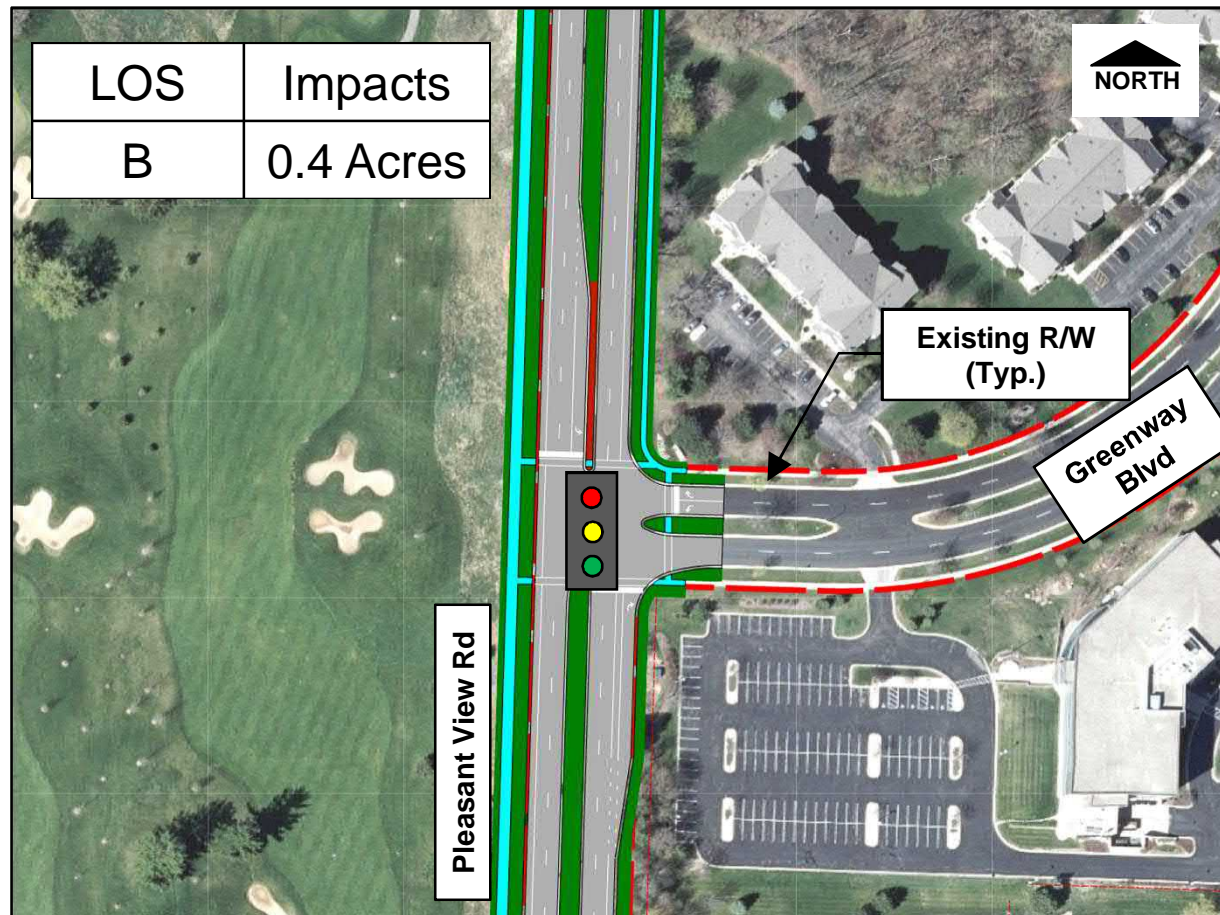
Blackhawk Road – Revised Traffic Signal Alternative



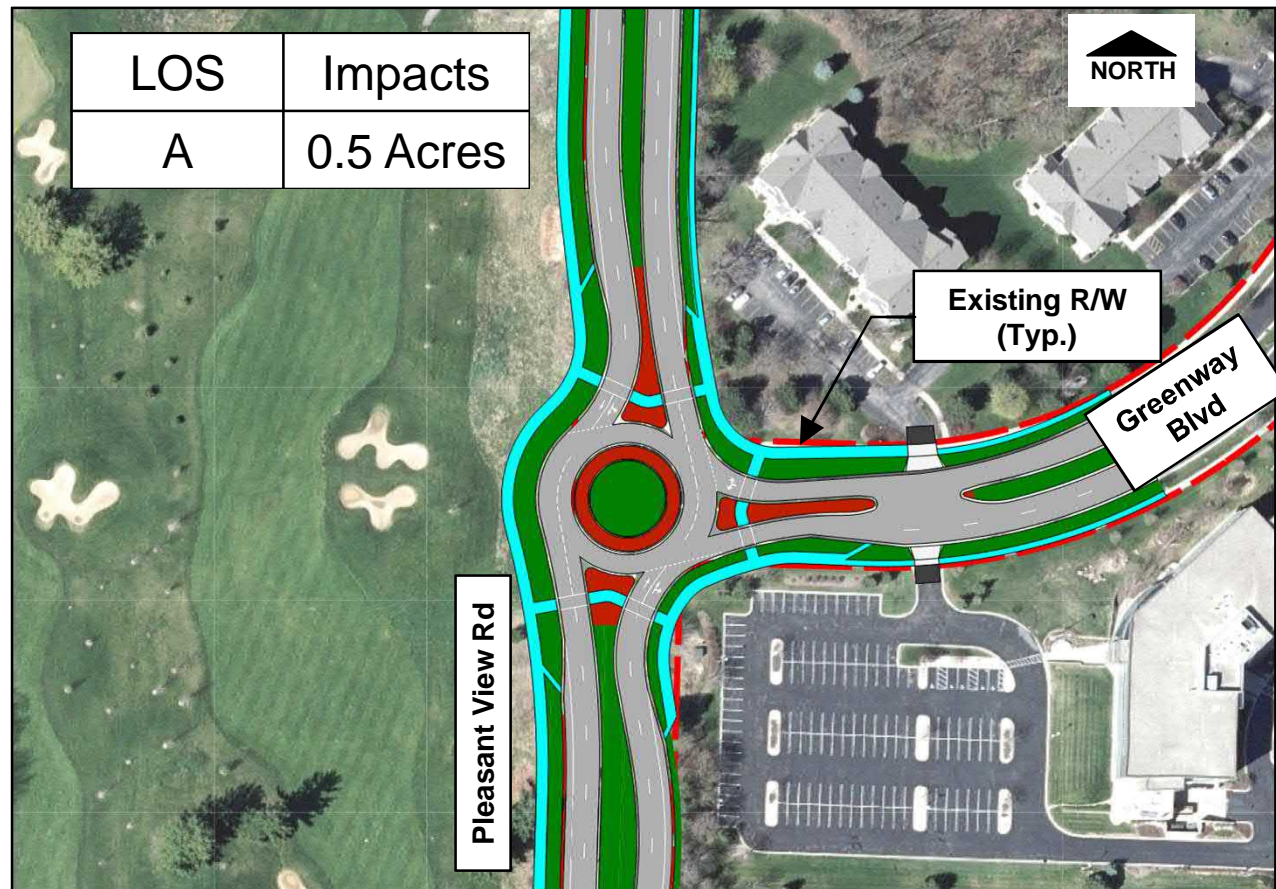
Blackhawk Road – Roundabout Alternative



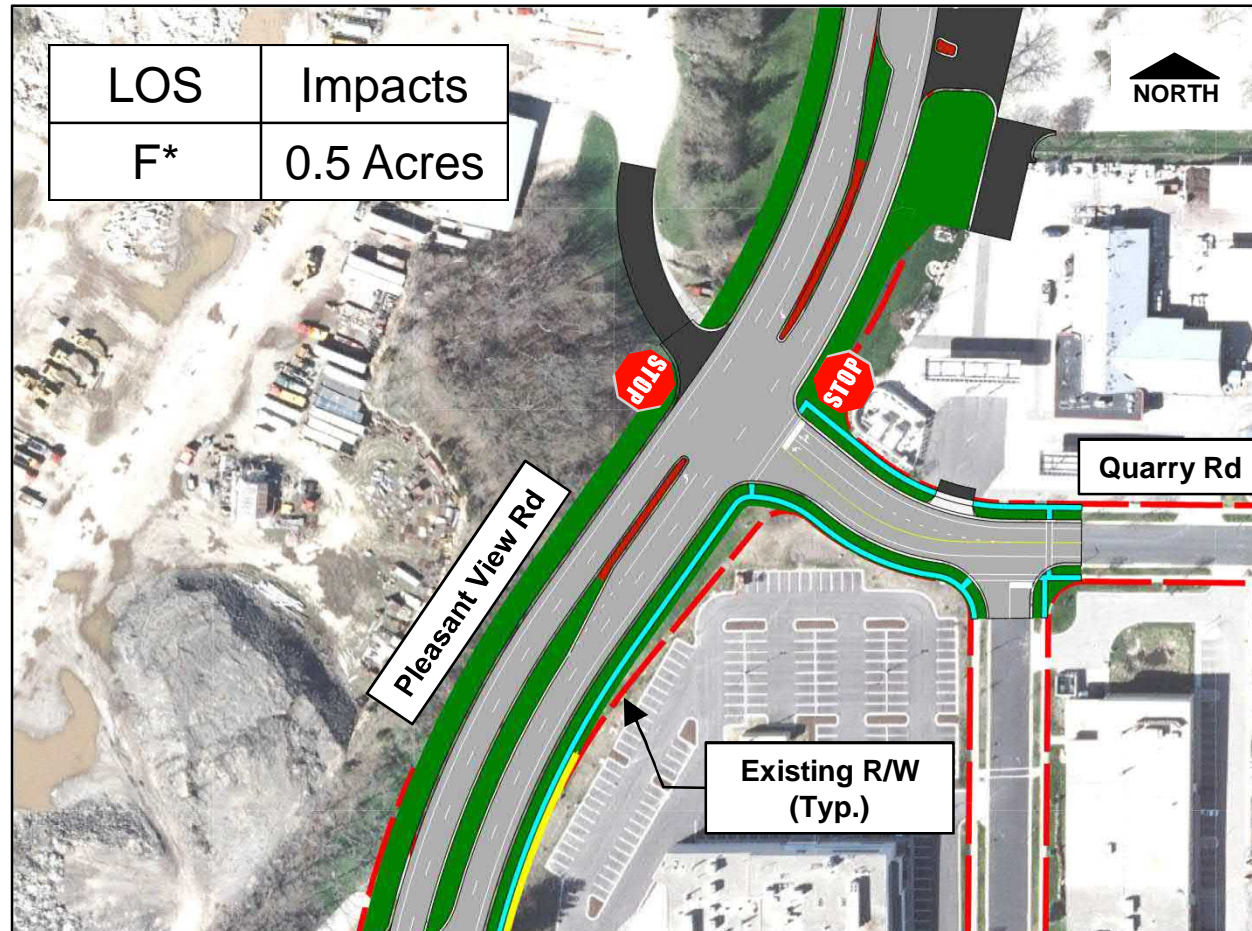
Greenway Boulevard – Traffic Signal Alternative



Greenway Boulevard – Roundabout Alternative

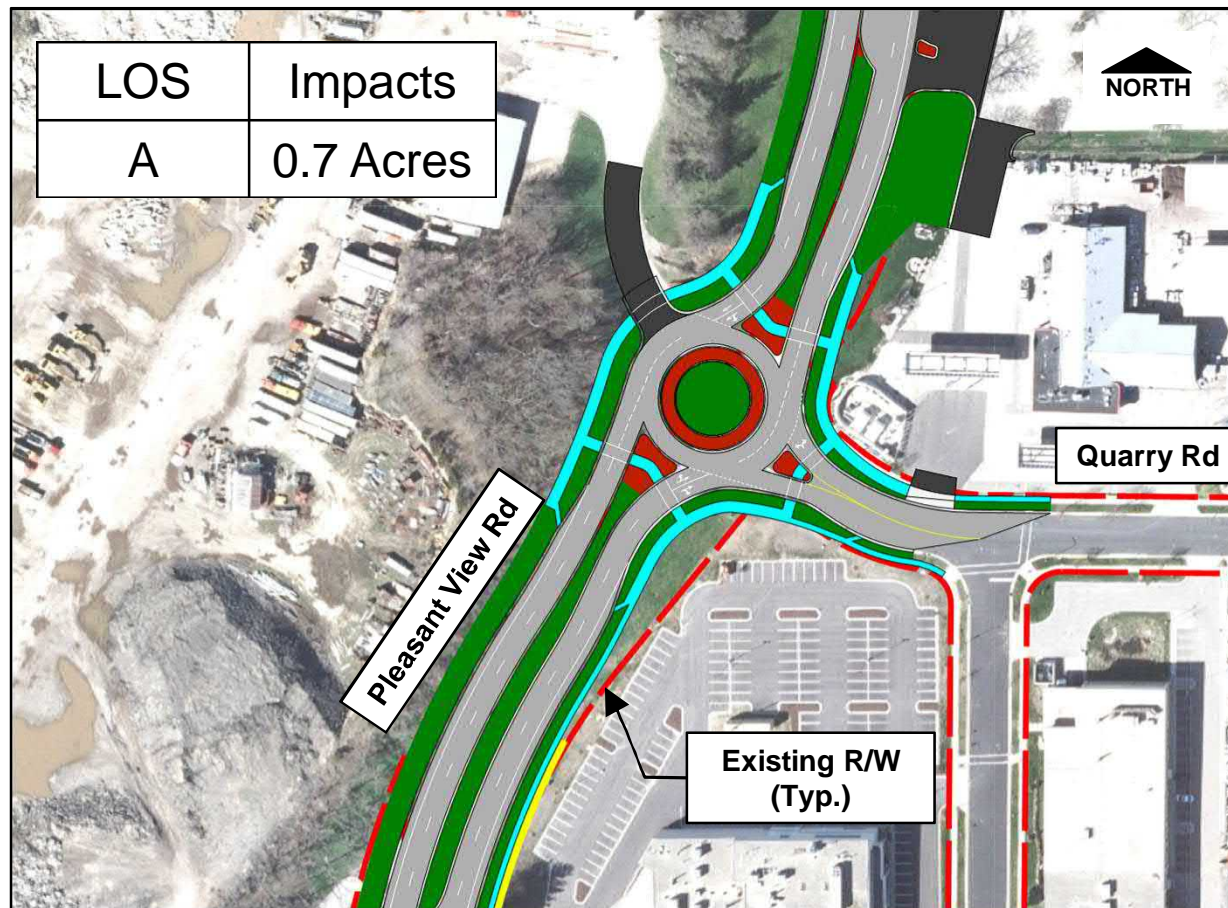


Quarry Road – Revised Two-Way Stop Control Alternative

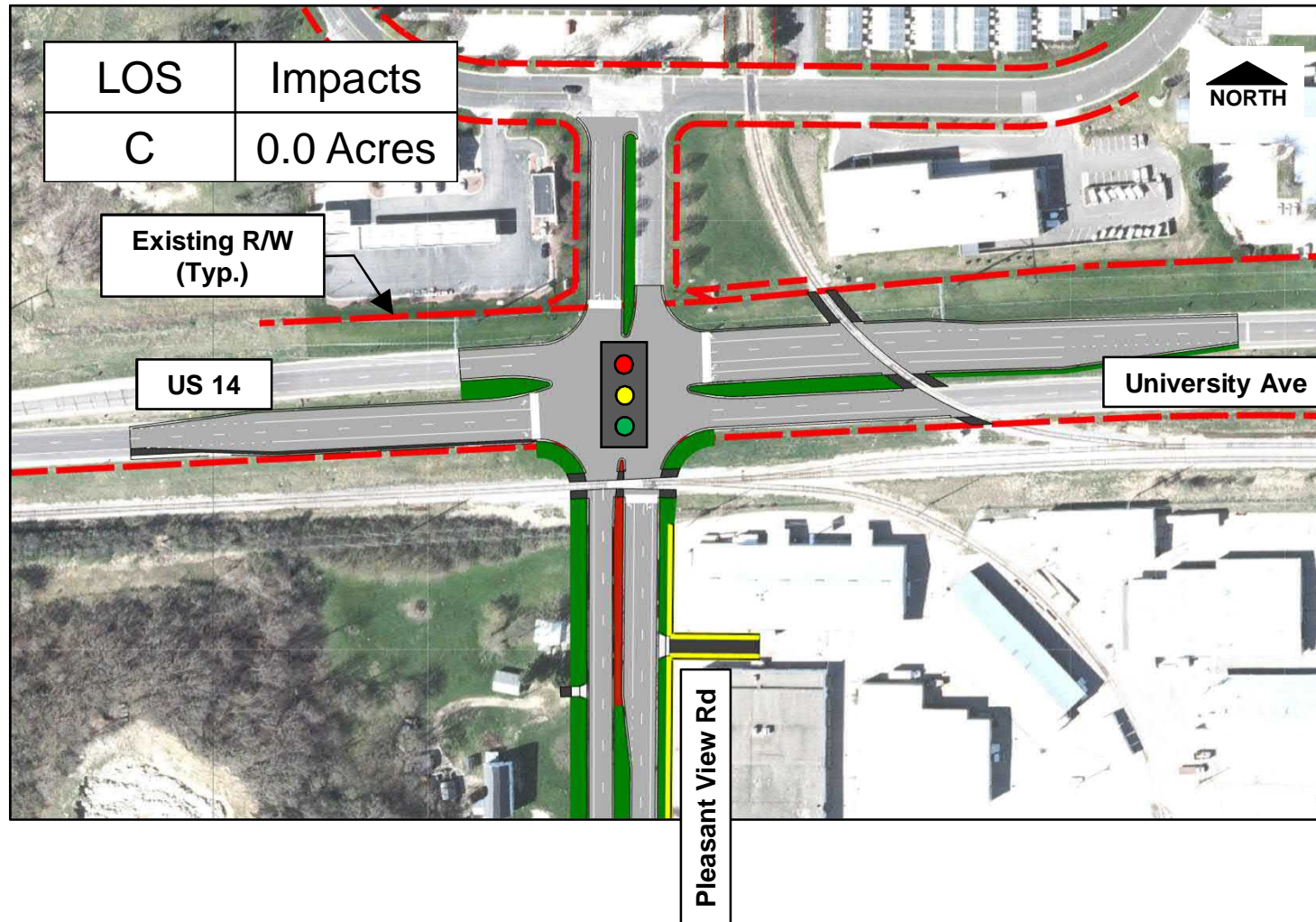


*LOS A when signalized
(and meets traffic signal warrants)

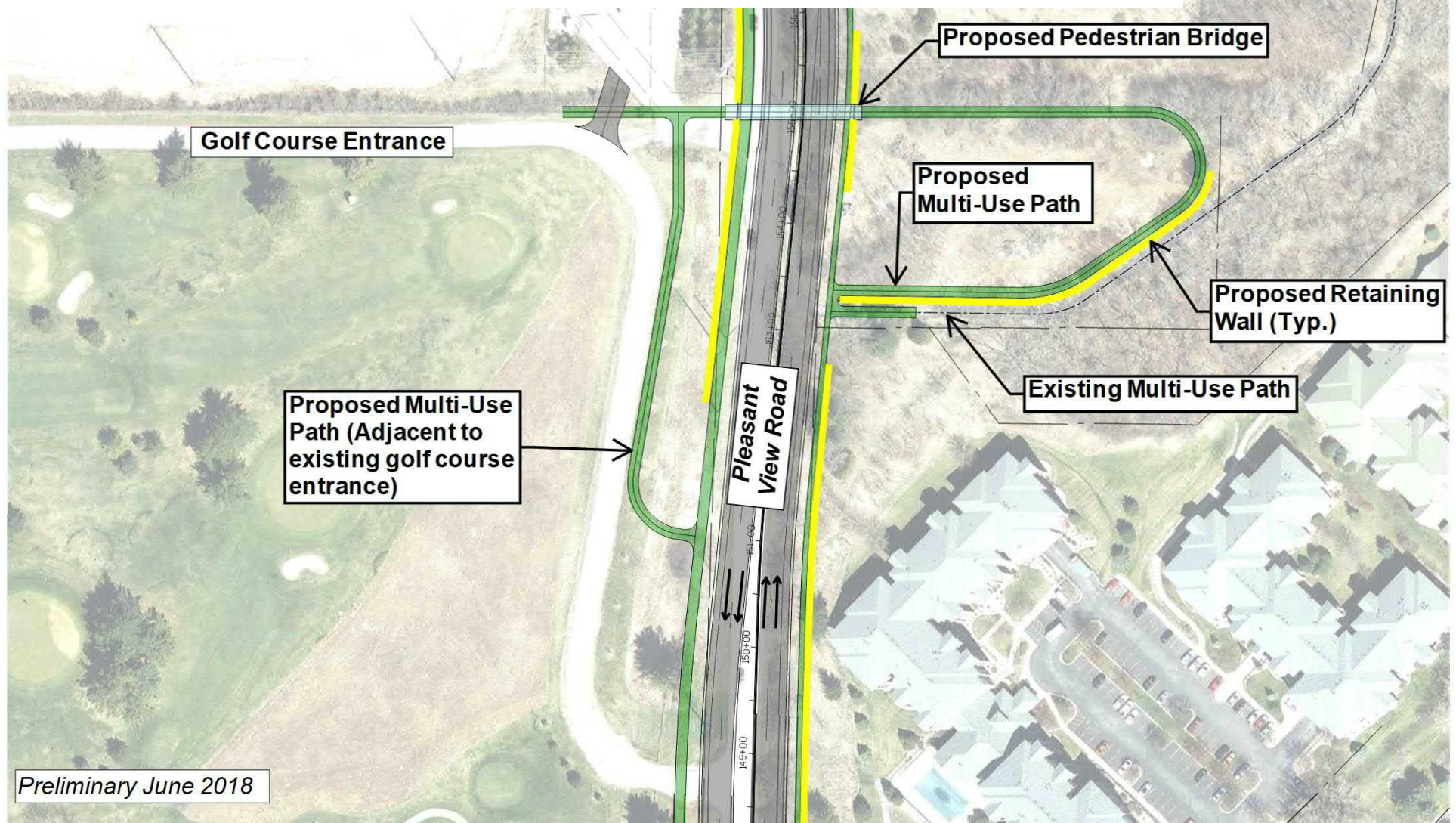
Quarry Road – Roundabout Alternative



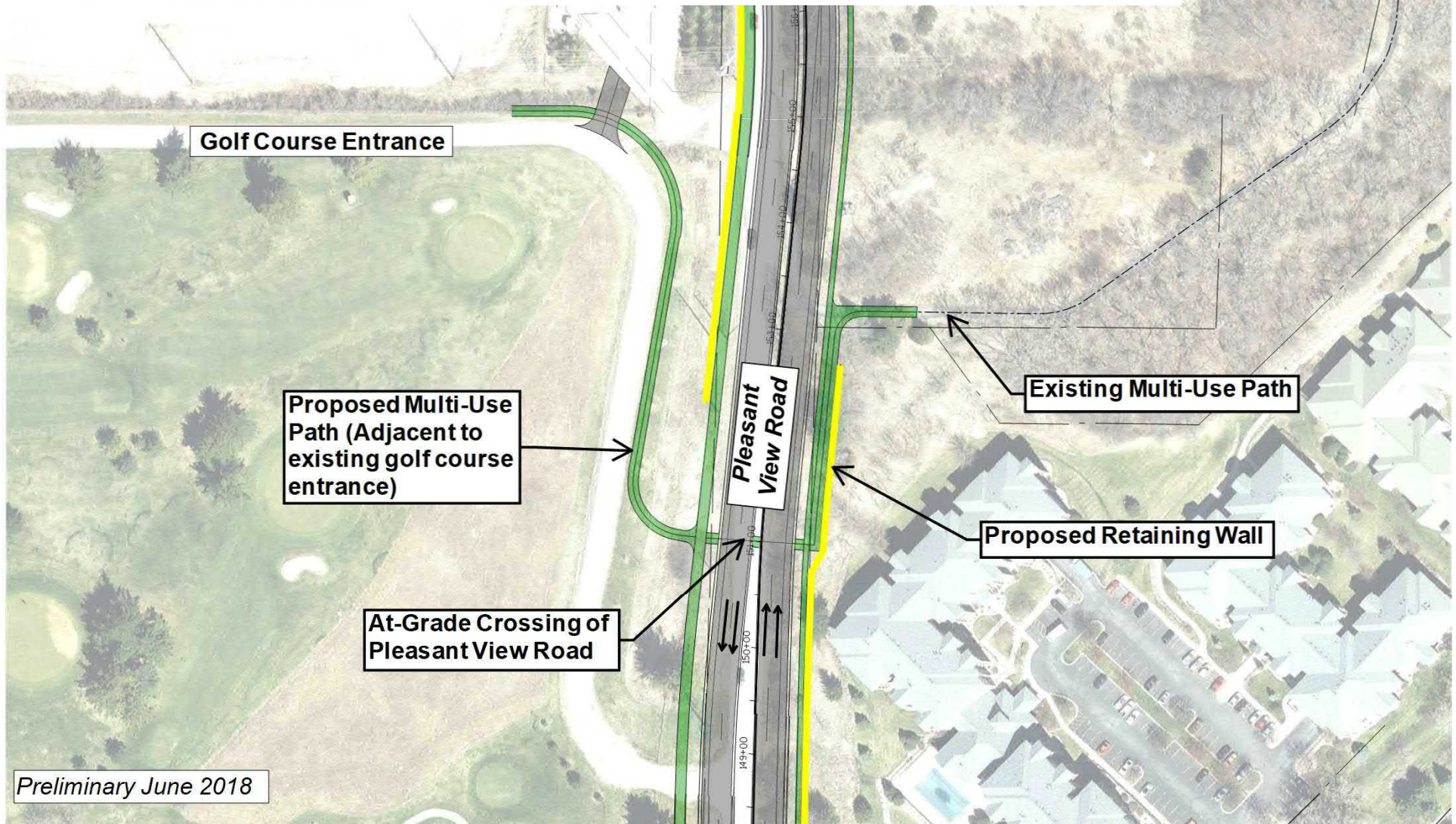
US 14 – Revised Traffic Signal Alternative



Pedestrian Bridge Crossing Over Pleasant View Road Alternative



At Grade Crossing Of Pleasant View Road Alternative



Tentative Project Schedule

- 30 Percent Design – Summer 2017 to Fall 2018
- Public Meeting No.1 – June 28, 2018
- Continue preliminary design incorporating comments – Summer/Fall 2018
- Public Meeting No.2 – Winter 2018/19
- Complete Preliminary Design – Spring 2019
- Final Design – Spring 2019 to Summer 2020
- Public Meeting No.3 - Summer 2019
- Public Meeting Prior to Construction - Early 2021



Tentative Construction Schedule

