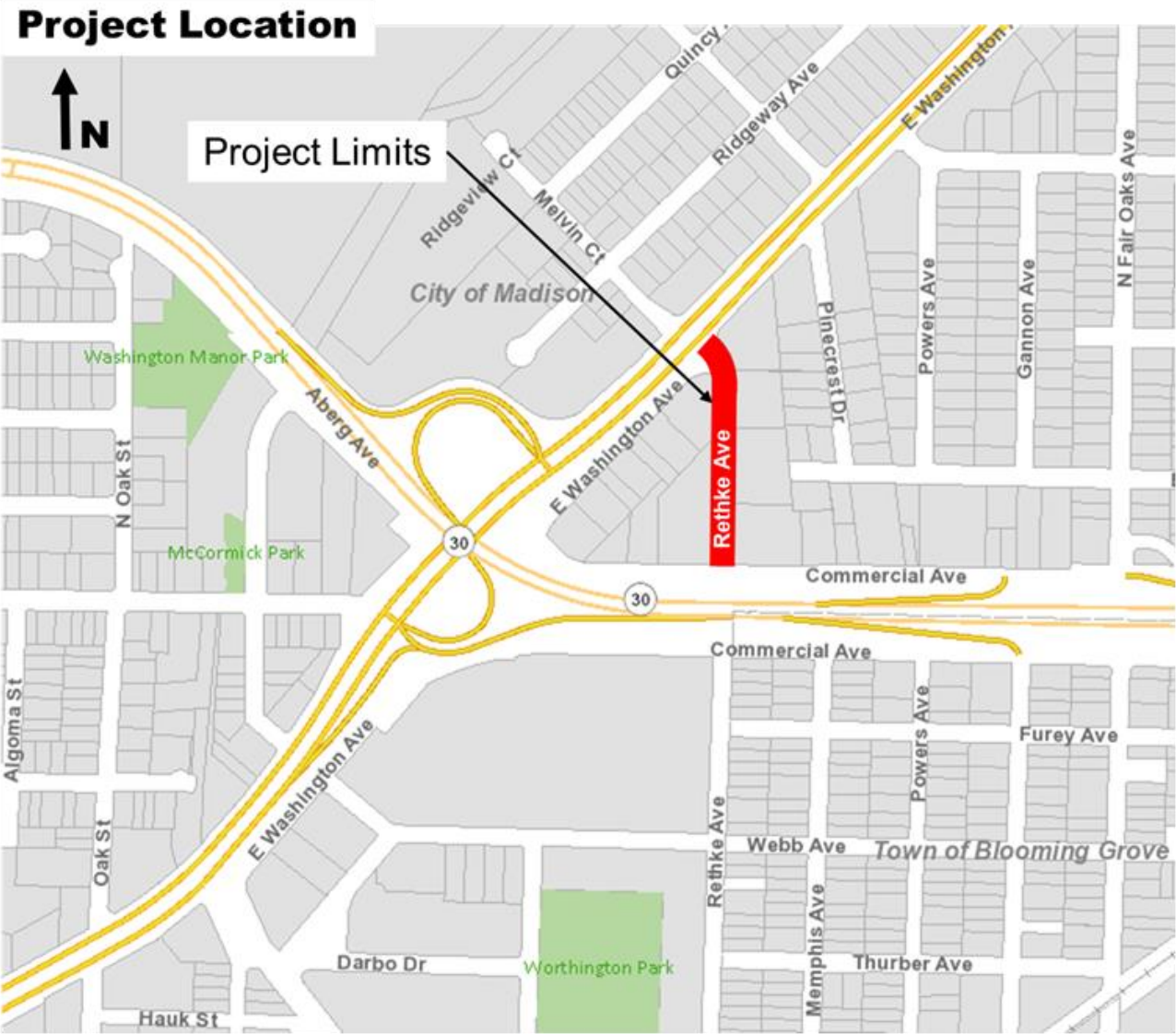




Rethke Avenue Reconstruction 2020

**Public Information Meeting
by City of Madison Engineering Division
March 5, 2020**

Project Location



Preview of Presentation

- ▶ Existing Conditions
- ▶ Proposed Design
- ▶ Construction & access
- ▶ Assessments policy & costs
- ▶ Project Schedule
- ▶ Contact Info & Resources

Existing Conditions

► Street

- Asphalt Pavement currently has a rating of 4.
- Pavement was last resurfaced in 1966.
- Missing curb on both sides of the street.
- Missing sidewalk on both sides of the street.

Pavement Surface and Curb
Evaluation and Rating

Quality	Rating
Excellent	9-10
Good	7-8
Fair	5-6
Poor	3-4
Failed	1-2



Existing Conditions

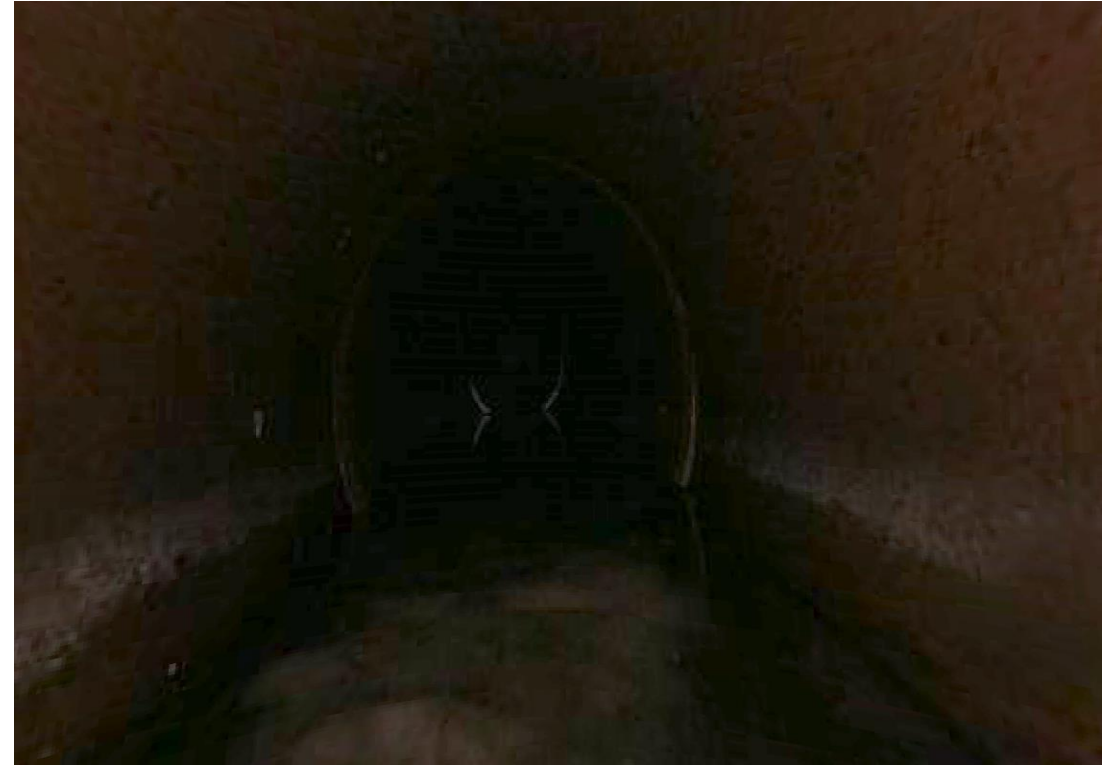
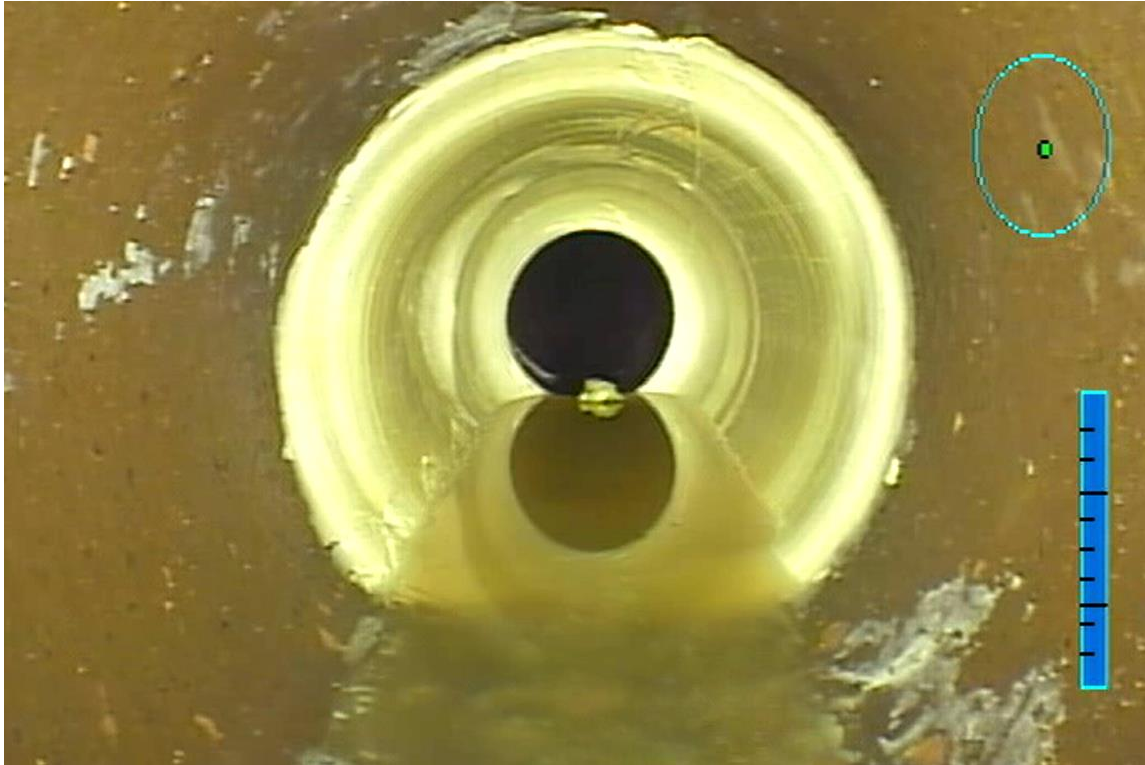


Existing Conditions

► Sanitary Sewer

- Sanitary sewer main and laterals were installed in 1951.
- Sewer mains are 8" in diameter and sewer laterals are 4" in diameter.
- Pipe material is Vitrified Clay Pipe (VCP).
- Sewer mains have been fixed multiple times with liners.

Existing Conditions



Existing Conditions

▶ Storm Sewer

- Storm sewer mains and structures were installed in 1958, 1969, and 2009.
- Sewer main sizes varies from 12" to 24" in diameter.
- Pipe material are Reinforced Concrete (RCP) and Corrugated Metal (CMP).

▶ Water Main

- Installed in 1960.
- Pipe Size is 6" in diameter.
- Pipe material is Cast Iron (CI).

Existing Conditions



Proposed Design

- ▶ **Underground Utilities**
 - Sanitary Sewer Main
 - Sanitary Sewer Lateral
 - Storm Sewer Main
 - Storm Sewer Inlets and Access Structures
 - Water main will not be replaced
- ▶ **Sidewalk & Driveways**
 - Install new sidewalk
 - Spot replace sidewalk
 - Replace all driveway aprons that are not connected to existing curb and gutter
- ▶ **Street**
 - Replace all existing pavement
 - Install new curb and gutter
 - Spot replace damaged curb and gutter

Why Sidewalk? Why Curb?

▶ Sidewalk

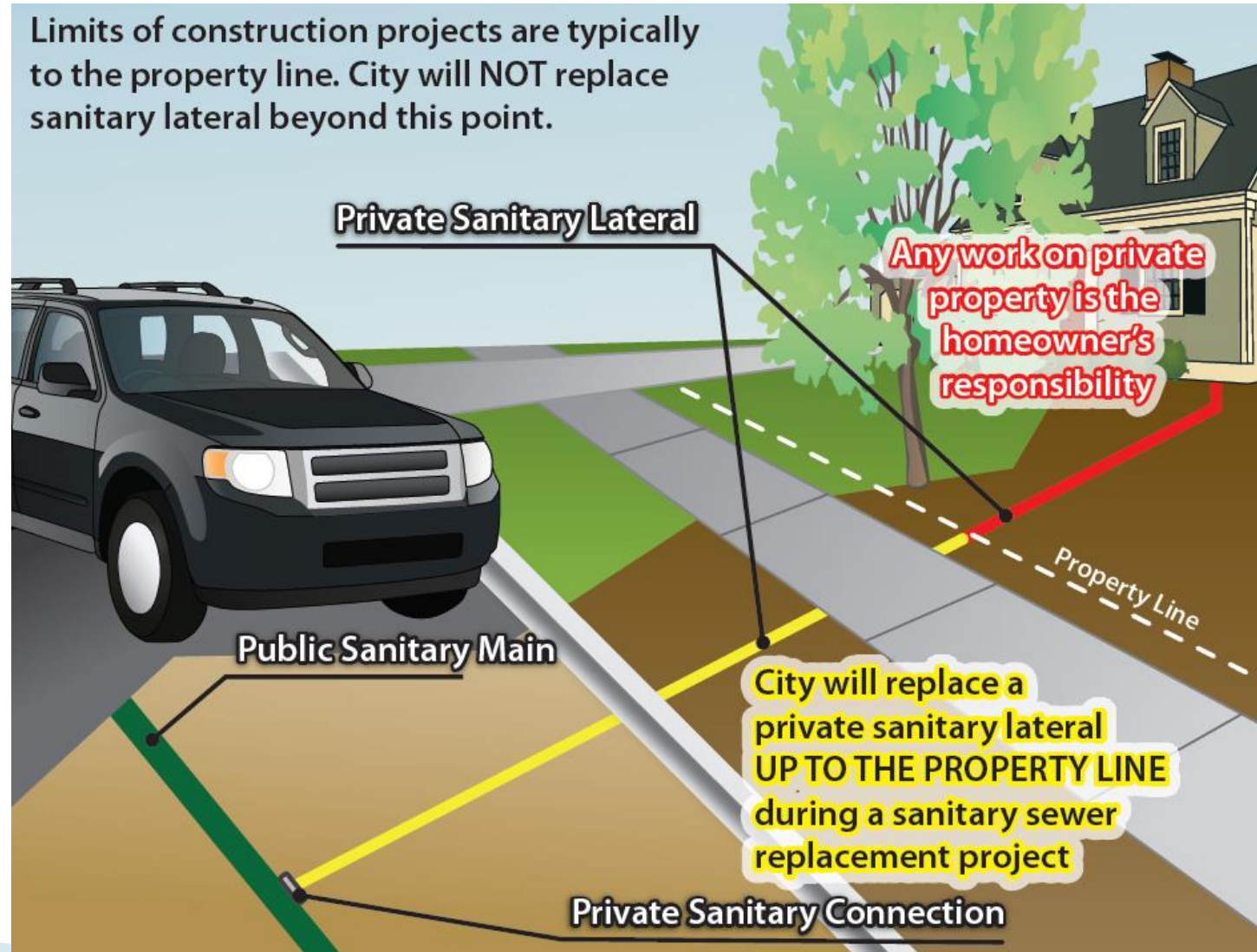
- Provides safe place to walk out of the roadway
- Increases access to those with mobility issues
- Comply with “Complete Streets” policy and ordinances

▶ Curb

- Improves drainage, channels stormwater to collection points
- Prevents erosion of soil beyond the pavement
- Protects edge of pavement against raveling
- Delineates the edge of the road; keeps people from parking in terrace; keeps road from widening when re-paved, chip sealed, etc.
- Helps keep plows in the street limits

Utility Details – Sewer Lateral

Limits of construction projects are typically to the property line. City will NOT replace sanitary lateral beyond this point.



Construction & Access

- ▶ Construction expected to begin in June.
- ▶ Project is expected to last 3 months.
- ▶ Road closed during project, traffic open for business costumers only.
- ▶ Driveway access will be maintained at all times with brief interruptions.
- ▶ Parts of the terrace will be disturbed to install the sidewalk, curb and gutter.

Assessment Policy & Costs

Item	Property Owner	
	Share	City Share
Curb & Gutter Replacement	50%	50%
New Curb & Gutter	100%	0%
Driveway Aprons Replacement	50%	50%
Sidewalk Replacement	50%	50%
New Sidewalk	100%	0%
Sanitary Laterals to property line	25%	75%
Sanitary Sewer Main	0%	100%
Storm Sewer Main	0%	100%
Private Storm Sewer Connection	100%	0%

- ▶ Assessments can be paid in lump sum or over 8 years with 3% interest.
- ▶ Final assessments are determined by the contract bid prices and will be mailed in the summer of 2021, following the project completion.

Project Schedule

- ▶ March 6, 2020- Mail Estimated Assessments, Public Hearing Notice
- ▶ March 25, 2020- BPW Public Hearing
- ▶ March 31, 2020- Common Council Hearing
- ▶ April 16, 2020- First advertisement for bids
- ▶ June 15, 2020- Begin Construction (Estimated)
- ▶ September 25, 2020- End Construction (Estimated)

Contact Information & Resources

▶ City Staff

- Fadi El Musa, City Engineering, 243-5214 or felmusagonzalez@cityofmadison.com
- Daniel Olivares, City Engineering 261-9285 or daolivares@cityofmadison.com
- Jeremy Nash, City Traffic Engineering, 266-6585 or jnash@cityofmadison.com

▶ Website: www.cityofmadison.com/engineering/projects/rethke-avenue

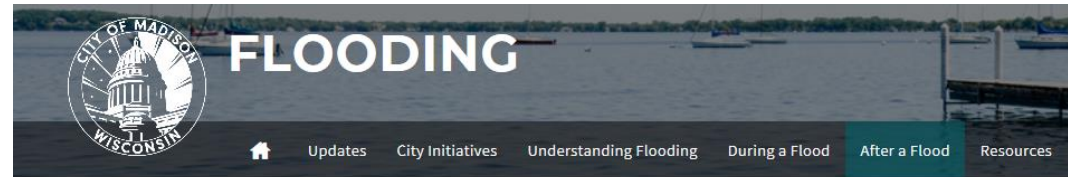
- Sign-up for project email updates on the website
- Updates on closures & work progress will be posted to the project website

▶ Facebook – City of Madison Engineering

Report Flooding and Damage

- ▶ Please report **Non-Emergency** issues to the following link:

www.cityofmadison.com/flooding/report/



[City of Madison](#) / [Flooding](#) / Report Flooding

Report Flooding & Damage

Please use this form to report **Non-Emergency** issues only.

- **Emergencies:** If you or someone else is at risk or needs help, or if the maintenance item is an emergency condition, please call **911**.
- **Stormwater Emergencies:** If clogged grates or blocked waterways are causing an imminent threat to your property, please call (608) 266-4430.

Please use this form to report flooding and damage to private property or public lands, including City parks. This form is for reporting flooding in the **City of Madison** only.

We will use this information to prioritize repairs and to plan for upgrades to our City stormwater infrastructure to reduce flooding damage in the future. Thank you for your time.

Flooding Type

Flooding Type * *required*

- ☐ Home or Building (Private Property)
- ☐ Street Flooding
- ☐ Park, Bike Path, Pond or Greenway, or Other

NEXT

CITY OF MADISON



Discussion/Input