


Robin Greenway and Orchard Drive Culvert Project Tree Removal Plan

Legend

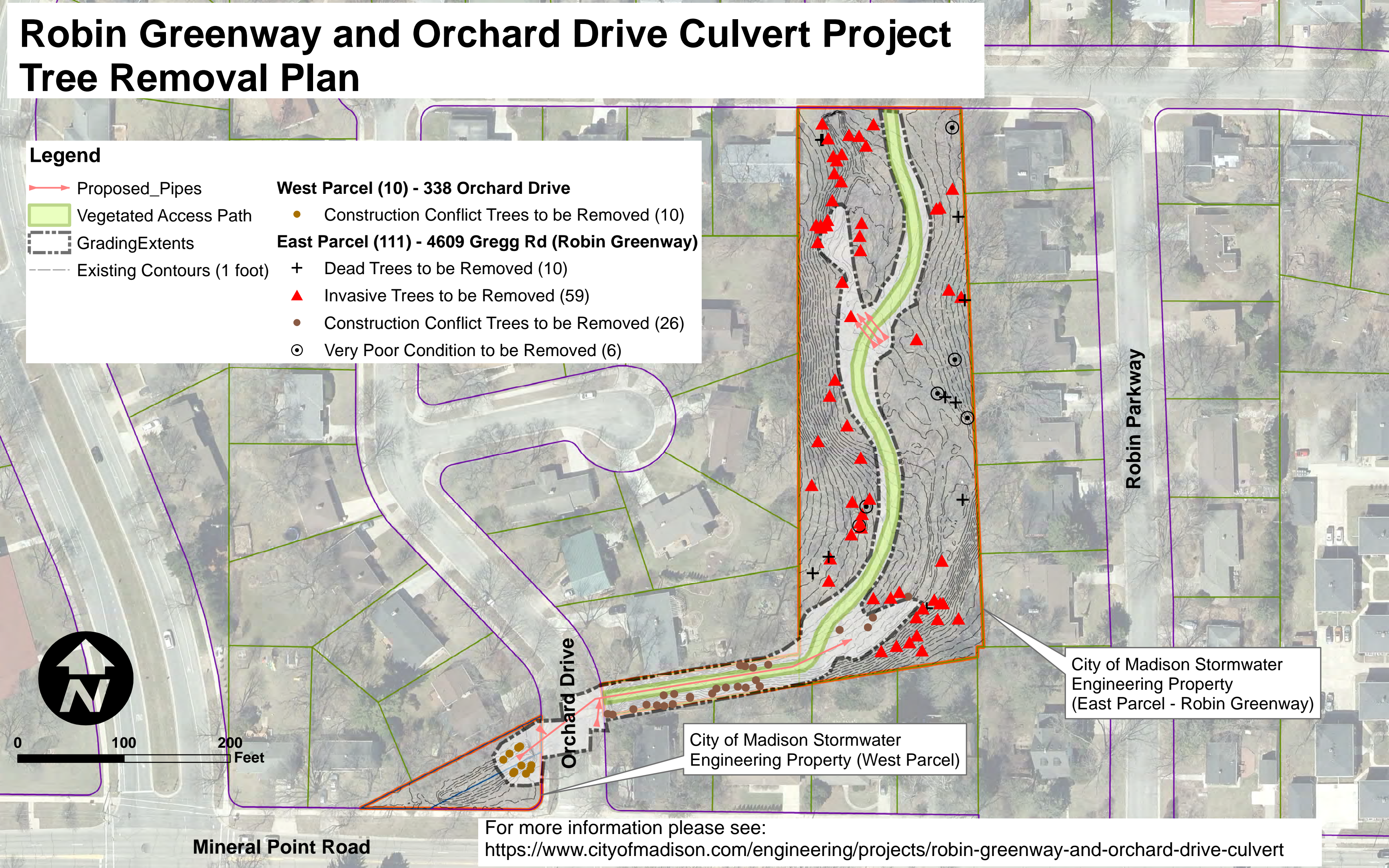
-  Proposed Pipes
-  Vegetated Access Path
-  Grading Extents
-  Existing Contours (1 foot)

West Parcel (10) - 338 Orchard Drive

-  Construction Conflict Trees to be Removed (10)

East Parcel (111) - 4609 Gregg Rd (Robin Greenway)

-  Dead Trees to be Removed (10)
-  Invasive Trees to be Removed (59)
-  Construction Conflict Trees to be Removed (26)
-  Very Poor Condition to be Removed (6)



City of Madison Stormwater Engineering Property (East Parcel - Robin Greenway)

City of Madison Stormwater Engineering Property (West Parcel)

For more information please see:
<https://www.cityofmadison.com/engineering/projects/robin-greenway-and-orchard-drive-culvert>

Mineral Point Road