



West Towne Pond Improvements

Public Information Meeting
City of Madison Engineering Division
May 5, 2026

Thank you for attending. We will begin shortly...



Meeting Technical Housekeeping

- This meeting will be recorded and posted to the project page.
- All attendees should be muted to keep background noise to a minimum.
- Use the “Q and A” button for technical issues with meeting to troubleshoot with staff to assist.
- Use the “Q and A” button to type questions about presentation. Questions will be answered live after the presentation.
- Inappropriate questions may be dismissed.
- Use the “raise your hand” button to verbally ask your question. You will be prompted to unmute when it is your turn.



This meeting is being recorded.

It is a public record subject to disclosure.

By continuing to be in the meeting, you are consenting to being recorded and consenting to this record being released to public record requestors.

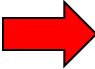




How to Participate

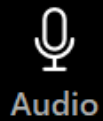
Choose one of the audio conference options

Phone call **Computer audio** Call Me

 **Join with computer audio**
Test speaker and microphone

Automatically join audio by computer when joining a webinar

City of Madison



Audio

Raise hand

Q&A

Show captions

Leave

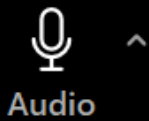


Make sure to join audio 



How to Participate

City of Madison



Audio

Raise hand

Q&A

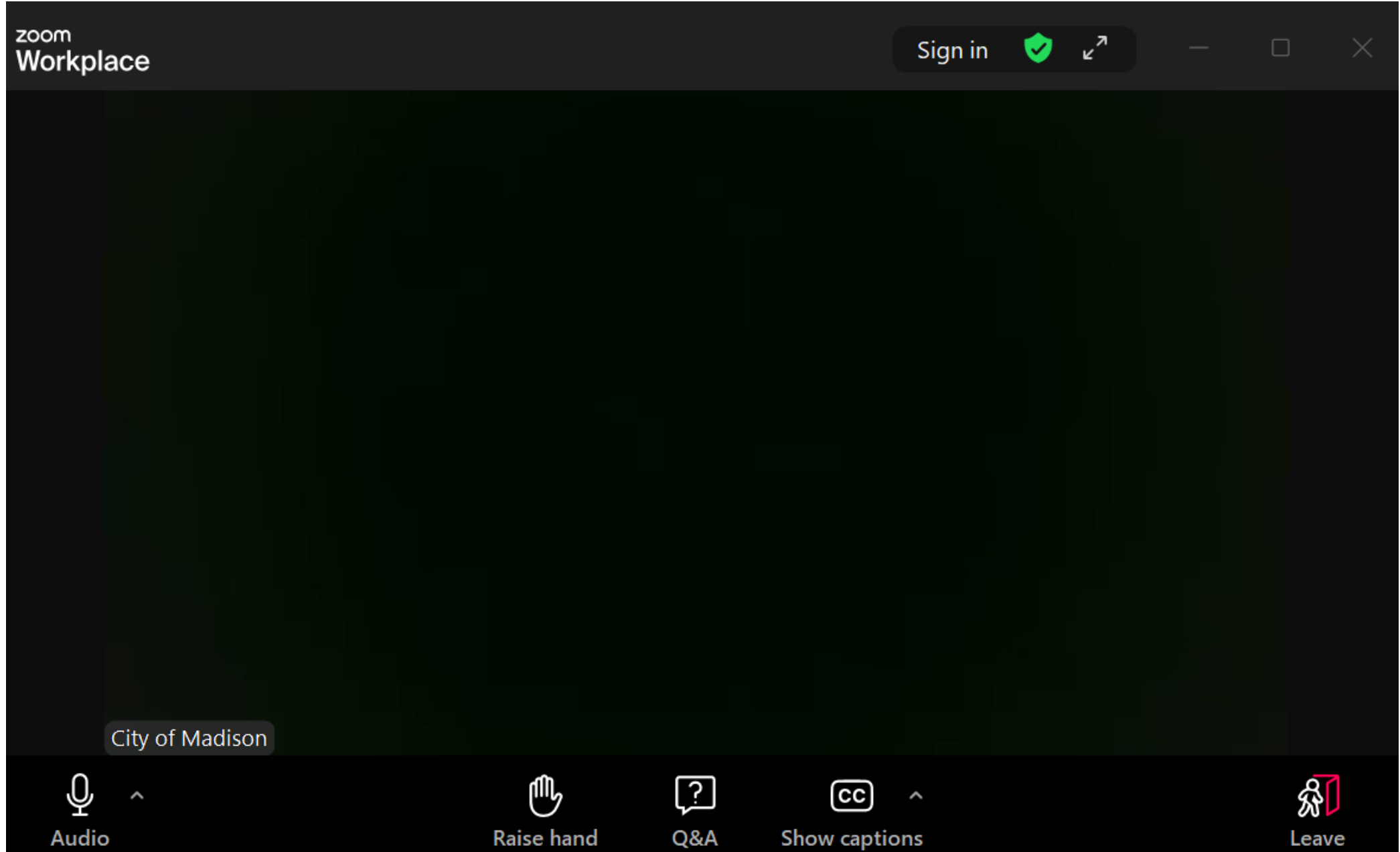
Show captions

Leave

Raise your hand to be unmuted
For comments or ask additional questions. 



How to Participate



Use **Q&A button** if you have technical issues or a question for the panelists.



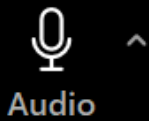
CITY OF MADISON





How to Participate

City of Madison



**Use Q&A button for all other questions.
We will answer after the presentation.**



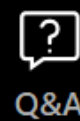
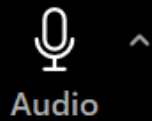


How to Participate

To leave the meeting, click leave.



City of Madison

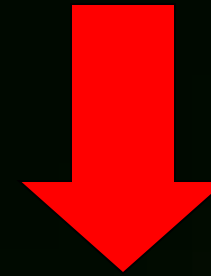




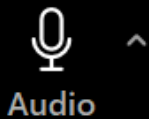
How to Participate

If you'd like to enable closed captioning, click "show closed captions" button on the bottom of the screen.

This may already be enabled. If this is not enabled, click the button to allow closed captioning.



City of Madison



Audio



Raise hand



Q&A



Show captions



Leave



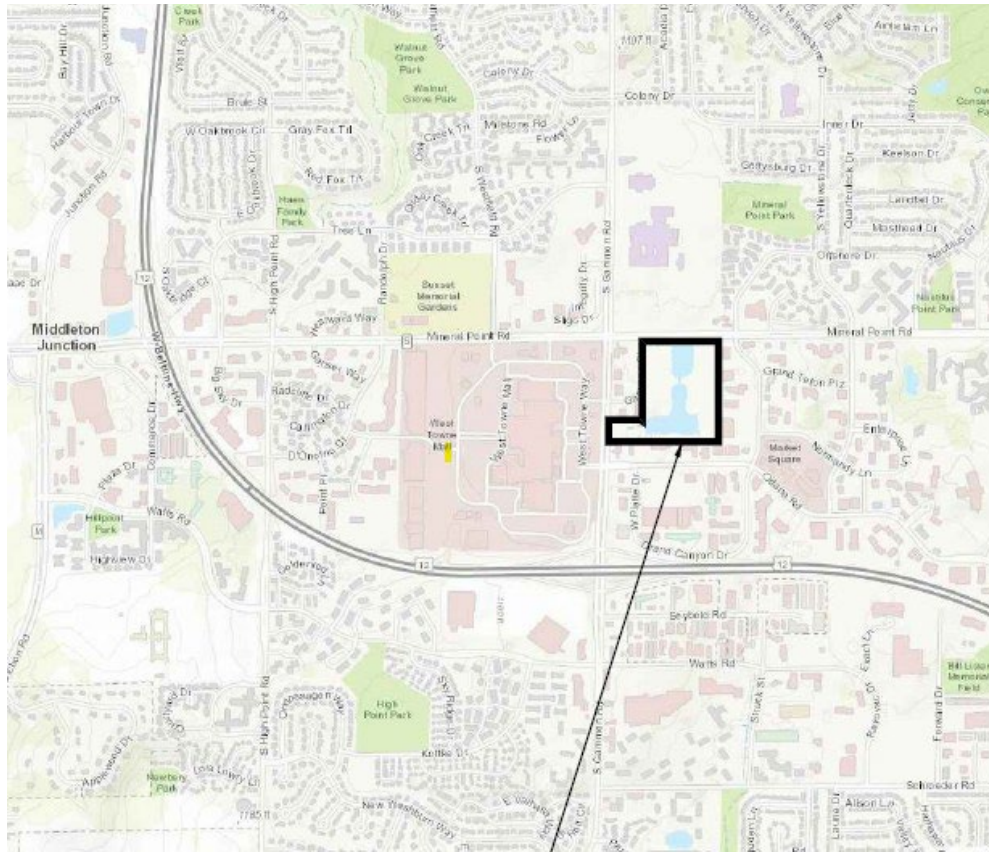
Project Contact Introductions

➤ Grant Pokos PE, Project Manager, City of Madison Engineering

- Civil/Water Resource Engineer with the City of Madison Engineering.
- Over 20 years of experience in site and stormwater design projects both in public and private sector.
- Specializing in design of infiltration basins, bioretention, wet ponds, greenways, sites and stormwater projects in the City of Madison and throughout Wisconsin.

➤ Alder John Guequierre

Project Location-West Towne Pond



PROJECT LOCATION



PROJECT LOCATION
APPROXIMATE AREA

Existing Conditions Photos



Looking From Outlet Structure on Mineral Pt. Road North



Looking West to East Across Wet Cell Along Gammon Rd.

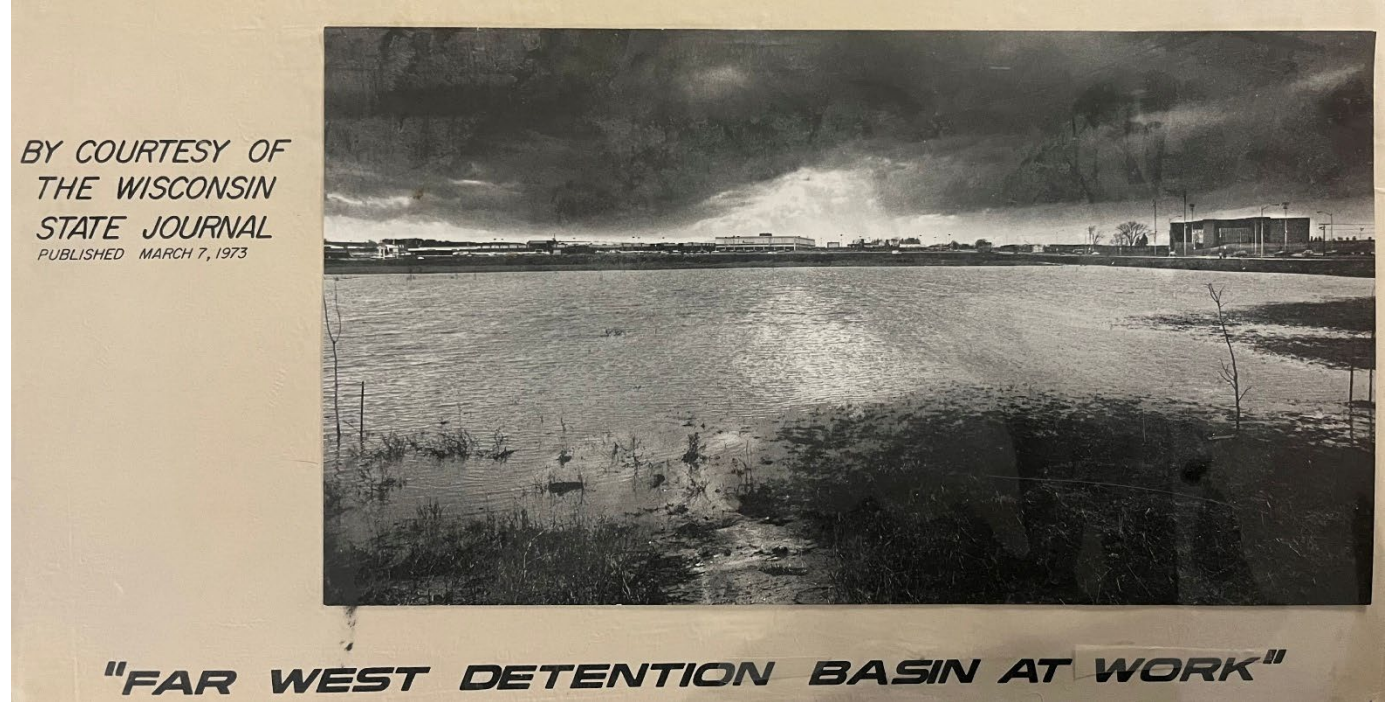


Westside looking Southeast from Gammon Place Across Project

Historical Information



Aerial Phot Circa 1937 Prior to development



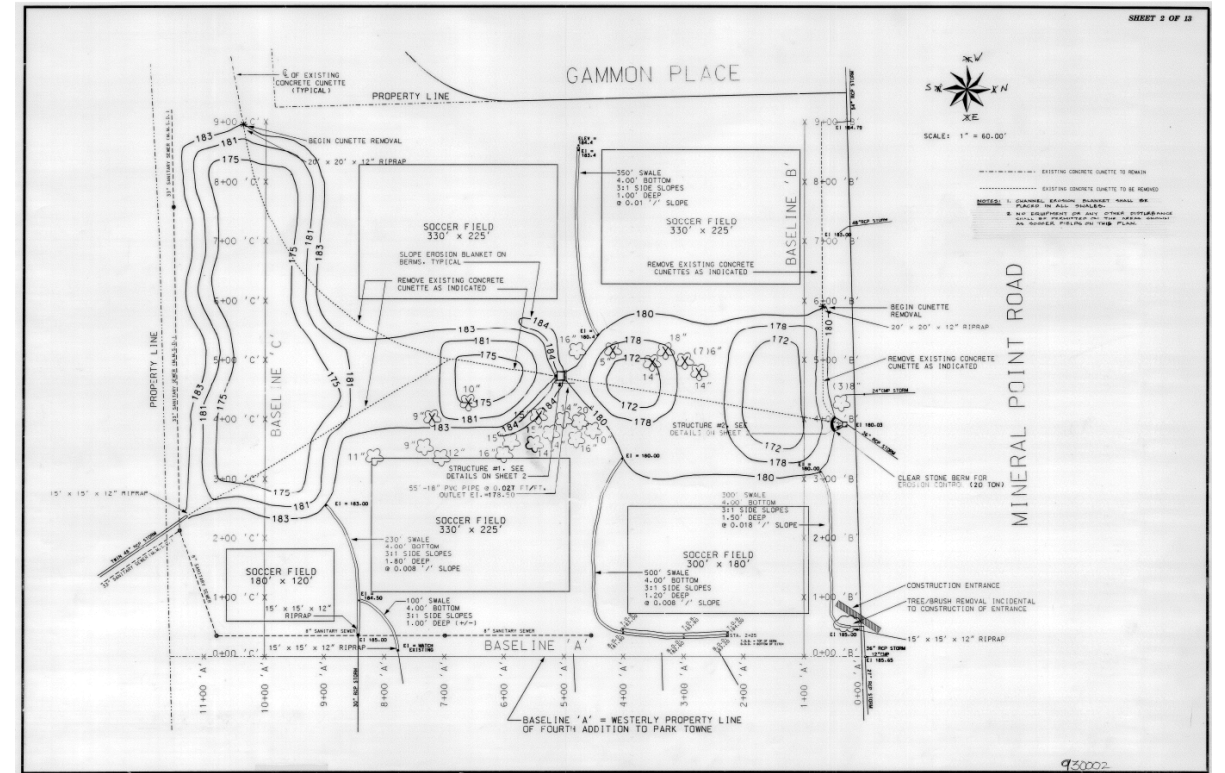
News articles March, 1973

This area has always been a drainageway. Old aerial photos show this location having a channel on it since before 1937 when this was being farmed. The City purchased the property around the 1960s, which predated the Park Towne development on Odana Road that was platted in 1969, and also predated West Towne Mall, built in 1970. Vel Phillips Memorial High School was established in 1966 and much of the drainage in this area was designed and constructed in that era as development expanded. Since this was on the outer limits of Madison at the time it was previously referred to as the Far West Basin. This property is owned and controlled by the Engineering Division for stormwater control.

Historical Information



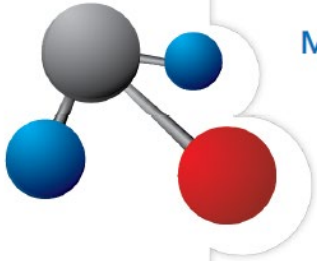
Aerial Photo Circa 1976



Engineering Plans Showing Pond Improvements 1993

In 1976 the existing natural channel was replaced with a lined concrete channel generally followed the same drainage pattern. A small “dam” (or outlet control structure) was also added to help hold back water and release it at a controlled rate. In 1993 further Improvements were done to the area to make it look closer to what you see today.

Spring Harbor Watershed Study




**SPRING HARBOR
WATERSHED
STUDY**

**CITY OF
MADISON, WI**



The City makes no representation about the accuracy of these records and shall not be liable for any damages

Prepared For



June, 2022

AE2S Project #: P13937-2018-001



After the 2018 Storm, the City of Madison created an initiative to model and study the entire city to find where stormwater projects can benefit and help protect the City. A report is in the works or completed for every watershed in the City. This area is under the completed Spring Harbor Water Shed Study and this was flagged as a project area that would greatly benefit the area.



West Towne Pond Drainage Area

Madison, Wisconsin

Total Drainage Area: ~690 Acres

Legend

- City Ponds and Greenways
- City Storm Sewer
- West Towne Pond Drainage Area
- Spring Harbor Watershed
- Out Of City of Madison
- Land Use - 2020
 - Cemetery
 - Duplex
 - High Density Residential
 - Hospital
 - High-Traffic Urban
 - Institutional
 - Low Density Residential
 - Light Industrial
 - Medium Density Residential
 - Multi Family Residential
 - Medium Industrial
 - Office Park
 - Open Space
 - Park
 - Schools
 - Shopping Center
 - Street
 - Strip Commercial
 - Water

0 310 620 Feet

Vel Phillips Memorial High School

West Towne Mall

Market Square Shopping Center

West Towne Pond Project Area



August 2018 Photos



Flooding following the storm

Odana Rd @ Grand Canyon Dr. – Dozens of cars flooded and abandoned during the storm near intersection



6706 Odana Rd. – Stores and parking lot flooding



August 2018 Photos



Mineral Point Road – South of Vel Phillips Memorial High School

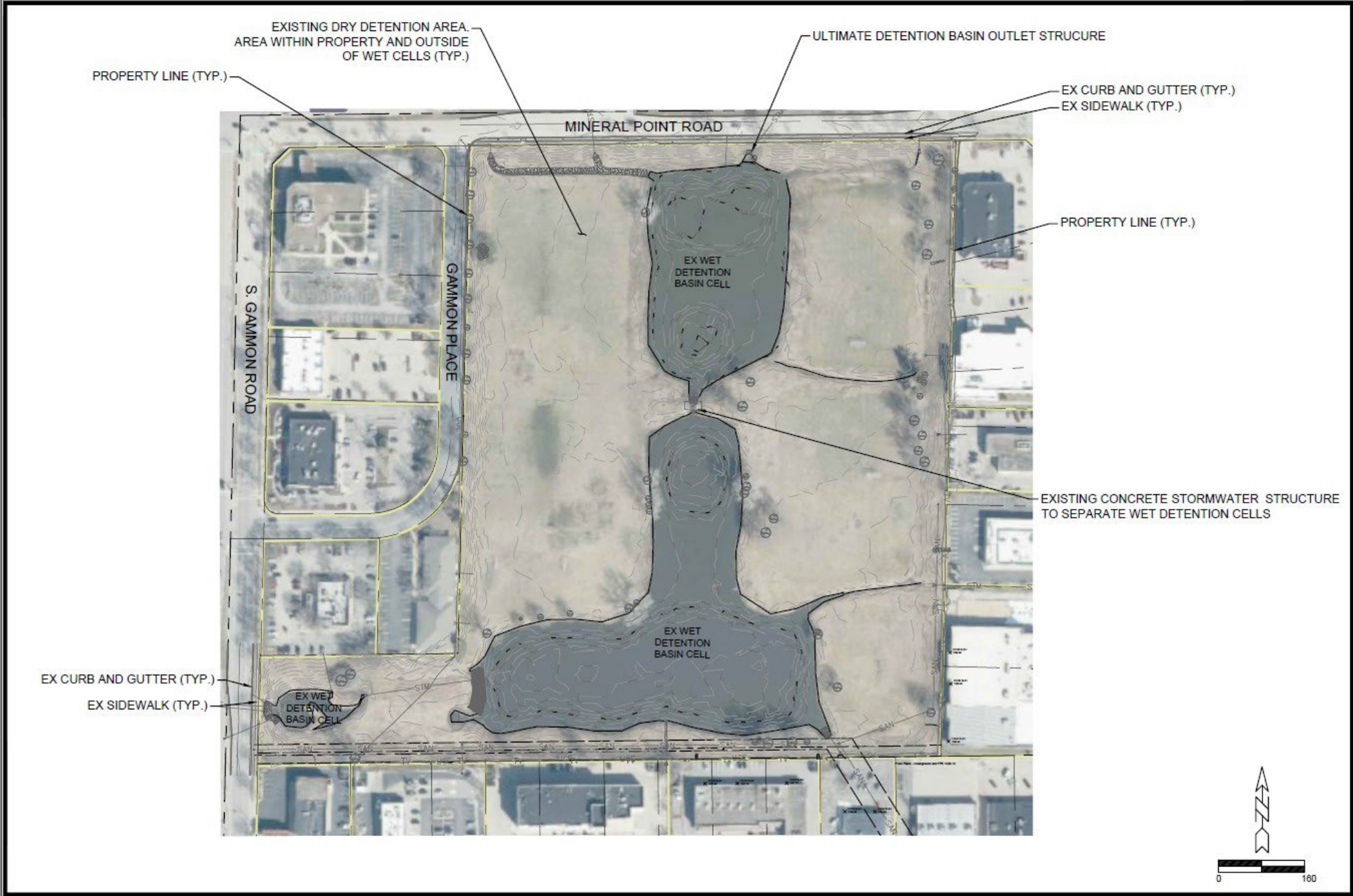


August 2018 Photos



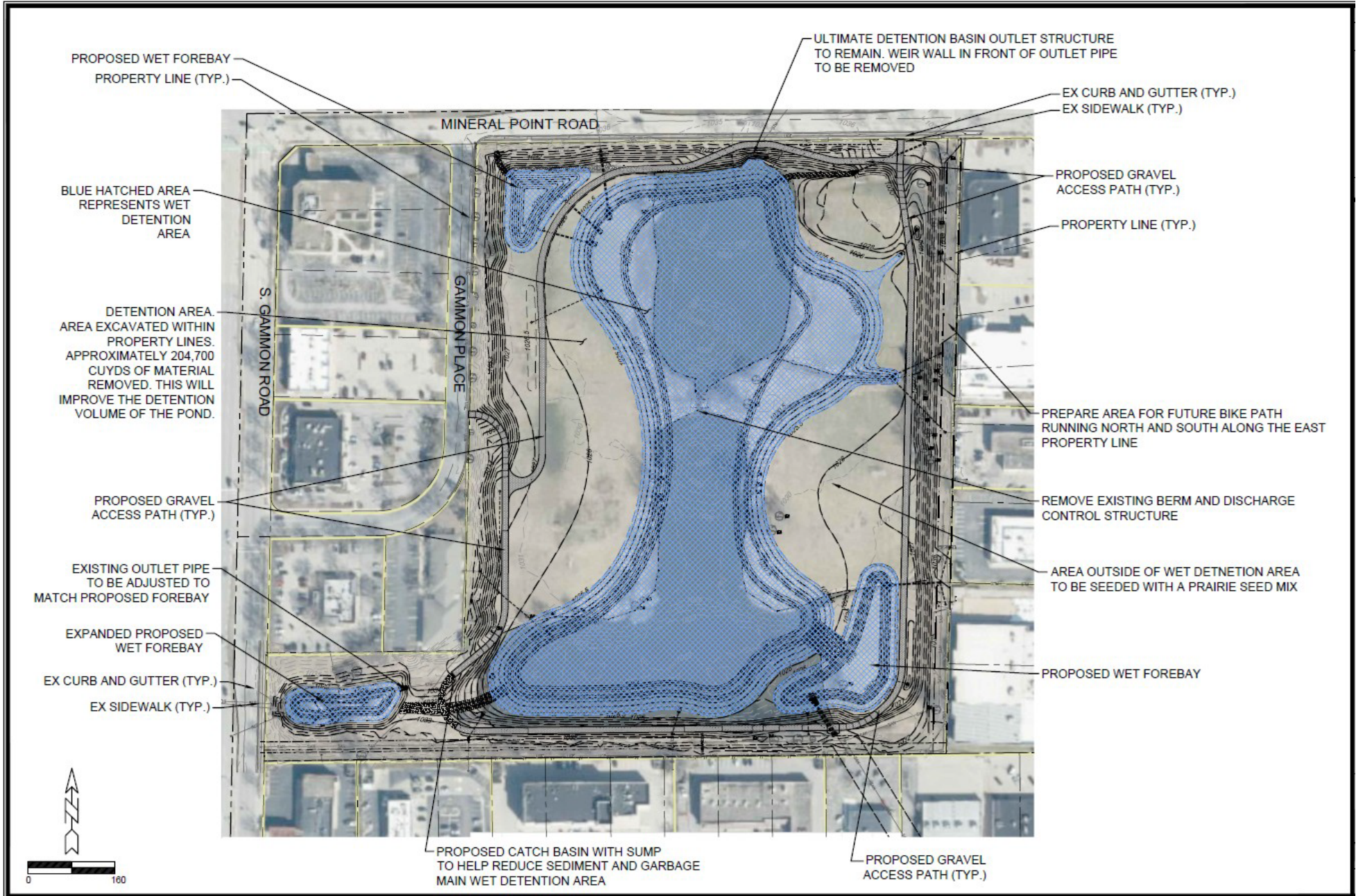
West Towne Pond – Significant water elevation in the pond





Existing Conditions Site Layout





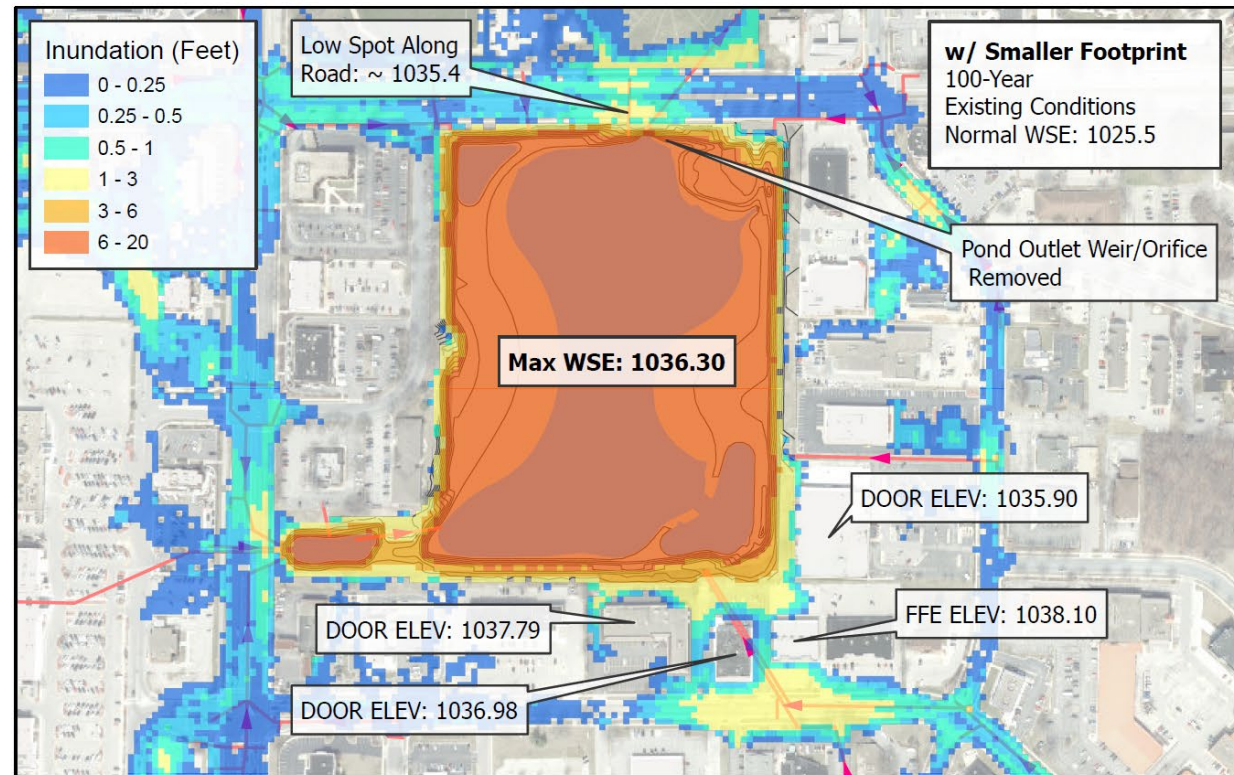
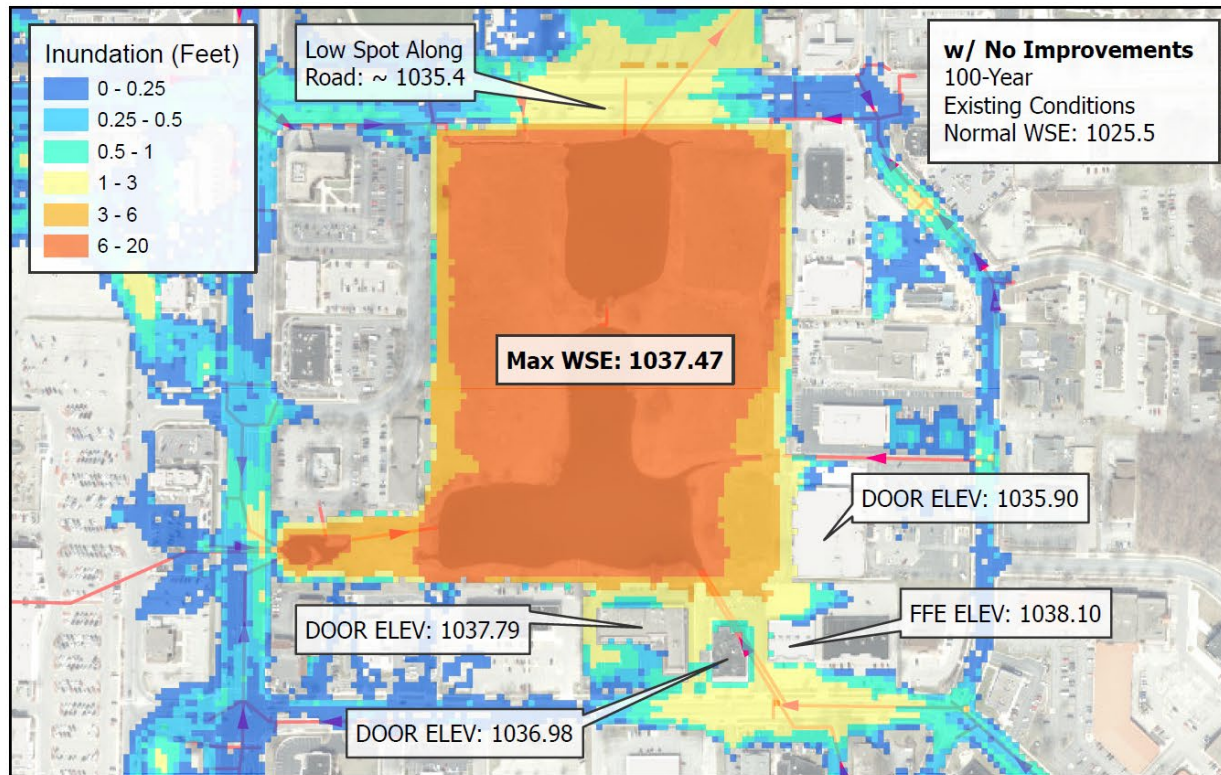
Note: The improved pond will remove approximately 204,000 cubic yards of material which will create additional volume for stormwater storage

Proposed Site Layout

Pond Improvement Benefits

- Increased Stormwater Storage Capacity
 - This will lower the peak stormwater elevations during storms
 - Reduce Flooding impacts in the area
- Clay Lining the Pond
 - Lining the pond will help keep runoff with salinity from infiltrating into this area
- Addition of Forebays
 - This will trap sediment before it enters the main pond wet area
 - This will keep sediment out of the pond, improves maintenance, Increases lifespan of pond and helps keep sediment from going downstream
- Gravel maintenance Access Paths
 - Allows the pond areas to be accessed so it can be maintained into the future
 - Paths can also be used and accessed by the public
- Rough Grading for Future Asphalt Path on the East Side
 - This will help prepare an area for a future path running north to south
- Addition of Native Plant Species
 - This will enhance ecological diversity to the area and improved pollinator habitat

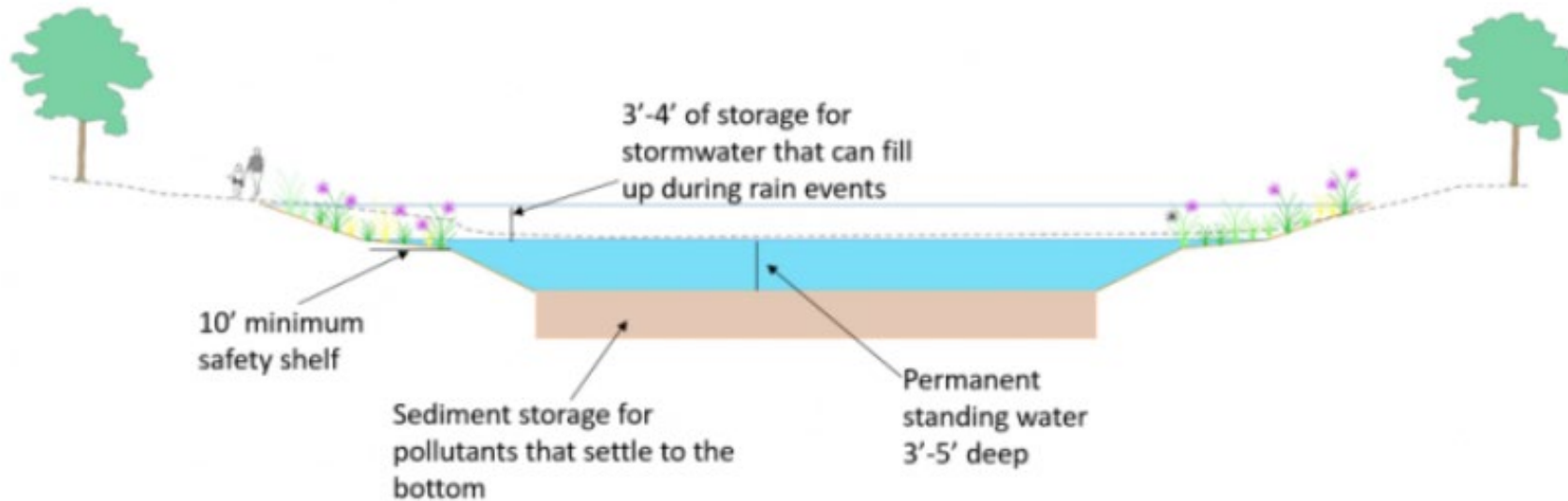
Stormwater Modeling Information for the 1% Storm Event



The modeled results show that with these improvements implemented the 1% storm water elevation in the area will drop by approximately 1.2'. Helping protect adjacent properties and traffic flow during storms

Why Do We Need Detention Basins

Typical Wet Pond



The City of Madison has approximately 300 ponds on stormwater utility owned land, and even more that are part of the greater stormwater drainage system. These engineered ponds are connected to other features of the drainage system by culverts, underground storm drains, and channels. Detention ponds are an effective tool for treating stormwater: After a rain event, the ponds swell with water, like a bathtub, then slowly release that water downstream. Engineered ponds help the whole stormwater system meet its goals by:

- Improve water quality: When stormwater is detained, the water slows down which allows sediment and nutrients to drop to the bottom of the pond and keeps it out of downstream streams and lakes.
- Minimize potential for flooding: by holding excess stormwater and slowly releasing it, downstream flooding is prevented.

Path & Vegetation



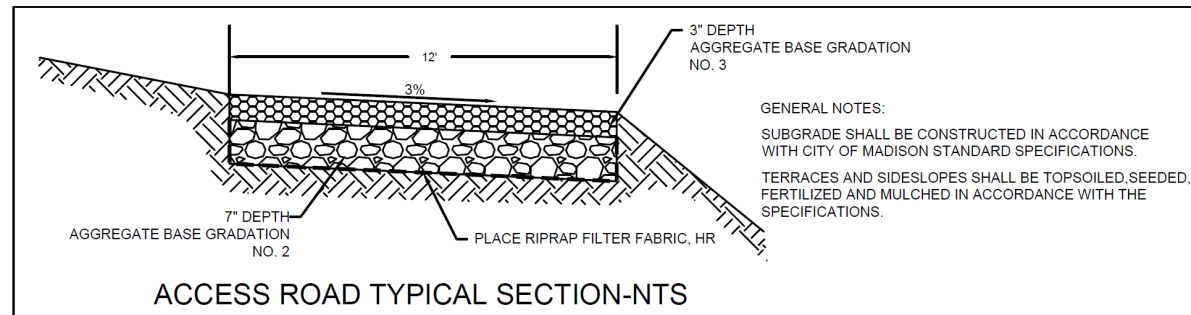
Current Area- Turf Grass



Photo of Gravel Access Path



Example of Native Vegetation (Flowers, Plants, Tall Grasses)



Current Project Schedule

- Design and Permitting: 2026
- Construction: Anticipated to begin winter late 2026/2027



Board of Public Works (BPW) Meeting

- Members of the public can watch, register support/opposition, speak (3 minutes), and/or submit written comments.
- Subscribe to the email list on project webpage to get notification when BPW meeting registration opens.
- If you register to speak, make sure the name you display in Zoom matches the name you registered under so staff know who to unmute when it's your turn.
- BPW meetings start at 4:30 PM but the public hearings for public works projects don't start until 5:30 PM (or when the item under discussion at 5:30 PM finishes). You can join at any time.
- If you have any questions about registering for the BPW meeting, email boardofpublicworks@cityofmadison.com.



Contact Information & Resources

- Engineering
 - Project Manager, Grant Pokos, P.E., 608-266-4862, gpokos@cityofmadison.com
- Project Website: cityofmadison.com/engineering/projects/west-towne-pond-improvements
 - Sign-up for project email updates on the website
 - Updates on closures & work progress will be posted to the project website
 - Recording of this presentation will be posted on the project website
- Facebook – City of Madison Engineering
- Instagram – @MadisonEngr
- X – @MadisonEngr
- Podcast: Search Everyday Engineering on Apple iTunes or your podcast provider