



2025 RECYCLOPEDIA

Contents

Using Your Collection Carts	2
Trash Collection	4
Recycling Collection	6
Frequently Asked Recycling Questions	7
Large Item Collection	11
Electronics Recycling	15
Brush Collection	16
Leaf, Yard Waste Collection	18
Drop-Off Sites	20
Drop-off Site Locations and Contacts	21
Urban Forestry	22
Move Outs and Cleanout Advice	24
Food Scraps	25
Winter Information	26
Top 30 Items	27
Streets and Urban Forestry Division Contacts	28

STAY INFORMED

Services described in this book may change over time. The Streets Division's website will have the most current information. Residents are encouraged to sign up to receive News Releases and other communications from the City of Madison at www.cityofmadison.com. And, be sure to follow the City of Madison on your social media platforms.

STREETS & URBAN FORESTRY DIVISION CONTACTS

Report Your Problems Online

Choose the correct form for cart swaps, missed collections, snow issues, or any other issue on the City's Report-a-Problem website.

Report-a-problem messages create an email sent directly to field supervisors to solve issues quickly.

» www.cityofmadison.com/ReportaProblem

Trash, Recycling, Large Items, Brush Collection, Yard Waste & Leaf Collection, Drop-off Sites, Street Sweeping, Filling Potholes, Mowing Medians, Snowplowing, and Cleaning Graffiti

For neighborhoods on the east and north sides of Madison

STREETS EAST	Phone:	608-246-4532
	Email:	streets@cityofmadison.com
	Office Hours:	7:30am to 4:00pm, Monday to Friday
	Office Location:	4602 Sycamore Avenue
	Website:	www.cityofmadison.com/Streets

For neighborhoods on the west and south sides of Madison

STREETS WEST	Phone:	608-266-4681
	Email:	streets@cityofmadison.com
	Office Hours:	7:30am to 4:00pm, Monday to Friday
	Office Location:	1501 West Badger Road
	Website:	www.cityofmadison.com/Streets

Trees Next to the Road and Other Urban Forestry Issues Citywide

URBAN FORESTRY	Phone:	608-266-4816
	Email:	forestry@cityofmadison.com
	Office Hours:	7:00am to 3:00pm, Monday to Friday
	Office Location:	1402 Wingra Creek Parkway
	Website:	www.cityofmadison.com/Forestry
	After Hours Tree Emergency:	Call 911 so on-call arborists can be dispatched

Wood Mulch and Commercial Brush Processing

TRANSFER STATION	Phone:	608-266-4911
	Email:	streets@cityofmadison.com
	Office Hours:	7:30am to 2:30pm, Monday to Friday
	Location:	121 East Olin Avenue
	Website:	www.cityofmadison.com/Mulch

HOLIDAY COLLECTIONS

The Streets Division will not perform curbside collections on the holidays listed below. The drop-off sites and offices will also be closed.

Use your collection schedule so you do not miss a trash or recycling pickup due to a holiday.

- New Year's Day
- Martin Luther King, Jr. Day
- Memorial Day
- Juneteenth (June 19)
- Independence Day (4th of July)
- Labor Day
- Thanksgiving
- Friday after Thanksgiving Day
- Christmas Eve
- Christmas Day
- New Year's Eve

WHAT IS THE TERRACE?

It's the grassy space between the sidewalk and curb. This strip is public right-of-way land. While homeowners maintain it, this space is technically City property. In fact, all homes, even ones without sidewalk, have right-of-way space along the street.

Use the right-of-way space, or terrace, to place your collection carts, to pile your leaves & brush, to place large items, and more. The Streets Division advises against using this space for gardening or decoration so they do not become damaged during city operations.

DIRTY CARTS

Residents are responsible for cleaning their collection carts. Carts will not be exchanged because they are dirty or have an odor.

USING YOUR COLLECTION CARTS

These guidelines are for all collection carts provided by the City for curbside collection.

- » Use the correct cart.
 - What goes into the green recycling cart? Turn to [page 6](#).
 - What goes into the tan trash cart? Turn to [page 7](#).
- » Follow your collection schedule.
 - Download yours at: www.cityofmadison.com/CollectionSchedule.
 - Or contact the Streets Division with your address so we can mail you a paper copy.
- » Follow these basic rules to have your cart collected on the scheduled pickup day:
 - **Place your cart out for pickup by 6:30am.**
 - Do not overstuff your carts.
 - **Recycling Carts:** Lids must be closed when out for pickup.
 - **Trash Carts:** Nothing should stick out more than 18 inches from the top.
 - Do not put more than 100 pounds of material into the carts.

How to Put the Carts Out for Collection

- » Please do not put carts in the street.
 - **Why?** Carts in the road/gutter line block street sweepers and snowplows from doing their work. They also cause traffic problems. During heavy thunderstorms and strong winds, carts in the road roll away.
- » Place carts on the terrace, driveway apron, or another spot along the edge of the road.
- » The white serial numbers on the cart should face the street.
- » Carts should be 4 feet away from obstructions like mailboxes, trees, street signs, utility poles, and so on.
- » On trash and recycling days, keep 4 feet of space between the carts so we can empty them without knocking any carts over.
- » If your home uses a lot of carts (for example, if you live in an apartment that uses our pickup), please do not stack the carts one behind the other. Carts should be side by side with enough space between them for the truck to grab each one.

How to Put Out Carts in the Winter

- » Do not put carts on top of snowbanks.
- » Shovel a spot next to your driveway apron or clear an area of the terrace or along the road edge for the carts.
- » Keep carts out of the street.
 - **Why?** They get in the way of snowplows.

How to Put Out Carts in an Alley

- » Carts must be at the edge of the alleyway.
 - If the carts are left on private property (like against a garage, for example), we cannot empty them. You need to wheel them out close to the edge of the alley.

Cart Exchanges, Repairs, and Purchases

- » You can request a larger (or smaller) cart at no charge. Contact the Streets Division or make the request online at www.cityofmadison.com/ReportaProblem.
- » Missing or damaged carts can be replaced or repaired. Contact the Streets Division for more information.
- » If you need an extra cart, or carts, you can buy them. You need to call us or visit an office in person. You cannot buy an extra cart online.

Carts are City Property—Do Not Take Them When You Move

Each home serviced by the Streets Division has one trash and one recycling cart provided by the City of Madison. When you move, these carts stay with the home. If you bought any extra carts, you can take only the extra ones you purchased.



This is a good example of how carts should be placed for a single family home on recycling day.

MISSED COLLECTION?

Contact the Streets Division office that services your home so a truck can be sent back to collect the stop that was missed.

The best method to report a missed stop is filling out the Recycling Collection or Refuse Collection report-a-problem form. The form is available at www.cityofmadison.com/ReportaProblem.

WHO PICKS UP YOUR RECYCLING?

Did you know that some areas of Madison are collected by private companies? If you don't know who collects your recycling or refuse, check the cart at your home. The carts will either have the City of Madison logo and information, or the logo of the company that provides the collection.

SCHEDULE UPDATE NEWSLETTER

Have you ever missed your trash day because you forgot about a holiday? Or maybe a snowstorm canceled pickups? You can stay informed about all these situations by signing up to receive emails each time the schedule is delayed. Do that at www.cityofmadison.com/CollectionSchedule.



Look familiar? You can get a bigger cart for free!

BUILDING MATERIAL

- Use the tan trash cart for items that fit. Follow the trash guidelines.
- For material too large for the trash cart, schedule a large item collection.
- You are limited to approximately 240 pounds of construction-related trash.

No Contractors

Our collections are for homeowners doing minor do-it-yourself projects.

What is “building material”?

Lumber, drywall, paneling, and similar construction debris.

No Shingles

We do not collect shingles at the curb. We do not accept them at the drop-off sites. You need to take them to a shingle recycler.

Recycling Construction Debris?

The Dane County Department of Waste and Renewables operates a construction and demolition recycling facility. For more details about this, go to the Dane County Landfill website or call them at 608-838-9555.

Other Construction Considerations

By ordinance, all projects with a value of more than \$20,000 are required to recycle their building material debris.

Other projects, like demolitions, require reuse and recycling plans.

For more information about permitting and other project requirements, visit the City of Madison Development Services Center website or call them at 608-266-4551.

TRASH COLLECTION

The Basics

- » Tan trash cart collected weekly.
- » Get the schedule for your home at www.cityofmadison.com/Streets.
 - Contact the Streets Division to have a printed copy mailed to you.
- » Follow all cart usage guidelines.

Use the Trash Cart for more than Bagged Kitchen Trash

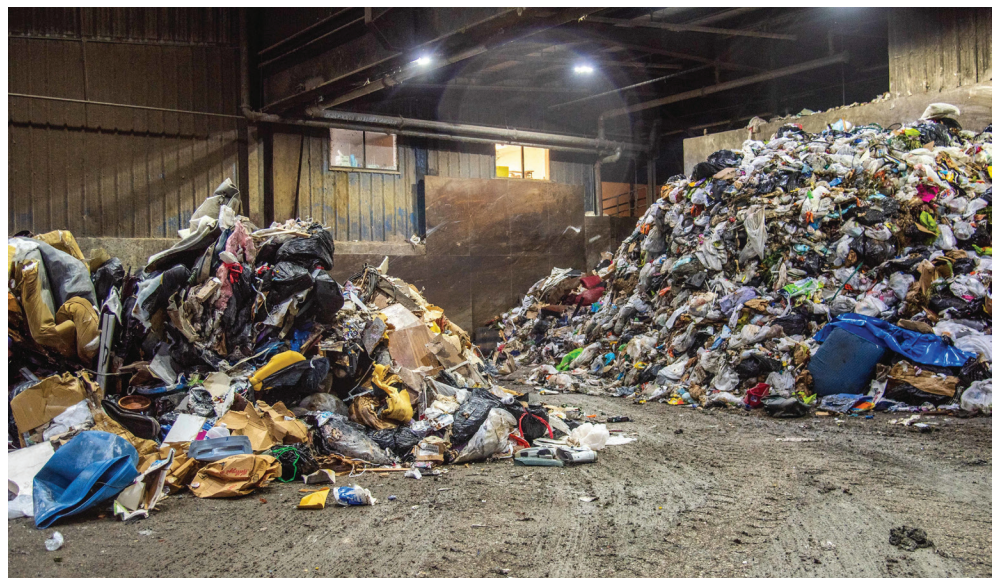
Clothes you can't donate, small pieces of wood, car seats, broken plastic shelving units, toilets, and many things that can't be recycled can go into the trash cart.

Some items are banned from the trash cart. A list can be found on [page 5](#).

If the item can fit into the trash cart, and it is safe to put there, it is okay to use the cart.

Special Instructions for Certain Trash Items

- » Ashes, coals, etc.
 - Bag it. Make sure they are cool before putting them into the trash cart. If you melt the cart, you have to pay to replace it.
- » Deer carcass
 - Double bag it.
- » Latex paint
 - Dry it solid. Put the solid paint into the trash. Liquid paint and non-latex paint goes to Dane County Clean Sweep.
- » Pet waste
 - Bag it. Put into trash can at your home.
- » Vacuum cleaning dust, sawdust, other dust, etc.
 - Bag it.



The Streets Division collects around 45,000 tons of trash just from the tan carts.

Items Banned from the Tan Trash Cart

A trash cart containing these items will not be picked up.

- | | |
|---|--|
| » Appliances | » Hazardous, flammable, or other chemicals (page 20) |
| – Air conditioners | » Infectious waste |
| – Dehumidifiers | » Medical sharps |
| – Microwaves | » Medication |
| – Refrigerators | » Motor oil (page 21) |
| – Etc. | » Paint, stains, varnishes, etc. (page 20) |
| » Bricks, rocks, dirt, concrete | » Pressurized gas containers, all sizes |
| » Brush (page 16) | » Recyclables (page 6) |
| » Car batteries and other lead acid batteries (page 15) | » Tires |
| » Electronics banned from landfills (page 15) | » Yard waste (page 18) |
| » Explosives, fireworks, etc. | |
| » Fluorescent light bulbs or fixtures | |

Use Our Online Recyclopedia to Find Items

We have a new online Recyclopedia tool to help you learn how to handle the stuff in your life.

Go to the "How do I dispose of ..." page of our website, www.cityofmadison.com/Streets or follow the QR code below:



What should you do with a greasy pizza box? Can you recycle it? Check the online Recyclopedia if you're not sure!

RULES FOR COLLECTING TRASH BAGS OUTSIDE THE CART

We will collect bags outside of the cart on a limited basis if you follow these rules:

- Trash cart must be full.
- You must have 6 or more bags outside the cart.
- Trash small enough to be bagged is inside trash bags. Do not cram trash into cardboard boxes.
- The bags must weigh less than 40 pounds apiece.
- **We will collect bags outside the cart on two consecutive weeks only, or at the discretion of the field supervisor.** If you have excess trash more often than that, choose other options.

MORE WAYS TO SOLVE THE EXTRA TRASH PROBLEM

- Use our drop-off sites.
- Swap the cart you use for a bigger one (this is free).
- Talk with your neighbor to see if they mind sharing the cart they use with you.
- Buy an extra cart from the Streets Division.
- Hold the trash until the next collection.
- Rethink your buying habits to make less trash and waste in the future.

CONSIDER A DUMPSTER

If you are making a significant amount of trash with your project or home cleanout, consider renting a dumpster from a private waste hauler. While this will have a cost, it may make your work much easier. Please note that you might need a Street Occupancy Permit if the dumpster needs to be in the public right of way. Call 608-266-4761 for more details about this permit.

MANDATORY RECYCLING

Recycling is mandatory in the City of Madison. Of course, recycling is important for the environment to save resources. There are also local and state laws that require everyone to recycle. And that's not just for single-family homes.

Each apartment building and commercial enterprise should provide adequate recycling services.

If your apartment building or workplace is not providing adequate recycling services, contact Building Inspection at 608-266-4551 and their inspectors will investigate.

RESOURCE RECOVERY SPECIAL CHARGE

If your recycling is collected by the Streets Division, you will see the Resource Recovery Special Charge on your municipal service bill, which most people call the water bill.

The charge pays for the recycling collection operations for the Streets Division. It also covers costs related to recycling the certain large items, like microwaves or dehumidifiers.

You can see the current rate on the Streets Division's website.

One way you can help keep the costs of the recycling rate lower is recycling more and recycling right. The less trash mixed in with good recyclables, the more valuable our recyclables will be.

KEEP RECYCLING CART LID CLOSED

Rain and snow ruins paper and cardboard inside the cart.

RECYCLING COLLECTION

The Basics

- » Green recycling cart emptied every-other-week.
- » Get the schedule for your home at www.cityofmadison.com/Streets.
 - Contact the Streets Division to have a printed copy mailed to you.
- » Follow all cart usage guidelines.
- » Only put the right recyclables in the green cart.

Recycling Guidelines

- » Recyclables must be clean, empty, and dry.
- » Empty and flatten all cardboard boxes.
- » Keep the cart lid closed when out for pickup.
- » Avoid bagging your recyclables.
 - Exception: Shredded paper must be in a see-through bag.

Size and Shape Matters

The recycling cart is meant for specific things, not *everything*.

- » Recyclables must be at least 3 inches tall.
- » Items must weigh less than 10 pounds.
- » Don't put oversized things, like totes or shelving, into the cart.
- » Only plastic containers are accepted in the recycling cart—think of bottles, jugs, clamshells, and so on.
 - Just because it's plastic doesn't mean it's okay for the recycling cart.

Carded Carts – What should you do?

Fix the problem noted on the card. Then call the Streets Division and we'll send a truck back to empty the cart. That's it!

The stuff in our lives is complicated. It can be so hard to know what to do if you aren't looking at good local information like this booklet or the City's website. We get it. We know it's tough. That's why we do our cart checks. We're peeking into recycling carts and leaving behind the cards to try to help people learn the right thing to do.



Going up!

FREQUENTLY ASKED RECYCLING QUESTIONS

1. How clean should recyclables be?

Make an honest effort. Remove leftover food. Give bottles and cans a rinse. It doesn't have to be perfect—just don't leave any obvious chunks or mess behind.

2. Why doesn't Madison ban plastic bags?

Current state law does not allow cities to ban plastic bags. The same law says we cannot charge a fee for them, or create a surcharge for them, or, according to the law, "enforce a resolution regulating the use, disposition, or sale" of them. Basically, this means stopping plastic bag waste is up to you. You can choose reusable bags or easy to recycle paper bags. You can go bagless for small trips, too.

3. Can I bag my recycling?

Recycling is best loose in the cart. The only exception is shredded paper. See the sidebar on this page for more details about shredded paper.

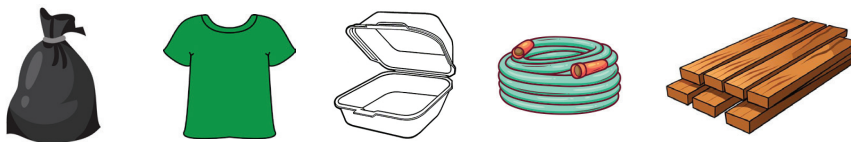
If you need to bag your recycling, you must choose see-through bags. **White, black, and gray bags do not work for recycling.** Sorters at the facility that receive your recycling need to be able to see into the bags and know it is full of good recycling without opening it.

4. Why is recycling so confusing?

Recycling is not the same in every state. This means the rules and opportunities we have here in Madison, Wisconsin aren't the same as what they have in Madison, Alabama or Madison, Illinois—or many other places. Plus, the stuff in our lives is *very* complicated, and it is always changing. It's understandable why it would feel so confusing.

The good news is that the solution is simple. You just need to find and follow your local guidelines—like this Recyclopedial! And, our website has up-to-date information, too.

Top Five Recycling Mistakes



1. Using the wrong kind of bag. If you bag your recycling, you **must** choose a see-through bag.
2. Clothes and other textiles never belong in the recycling cart.
3. Styrofoam never belongs in the recycling cart. To recycle it, you must take it to a drop-off site.
4. Tanglers like hoses, ropes, and loose plastic bags or shower curtains never belong in the recycling cart.
5. Wood and lumber never belong in the recycling cart.

HELP YOUR NEIGHBORS RECYCLE BETTER

We have worked with Sustain Dane for the past five years to teach the Recycle Better course. This teaches people some in-depth recycling information and empowers people to share their recycling expertise with their friends, neighbors, coworkers, and others. You can see when the next class is at www.sustaindane.org/Better.

SEE HOW YOUR RECYCLING GETS SORTED

The City of Madison has worked with Pellitteri Waste Systems for the past several years to sort and sell the recyclables we collect. You can see how Pellitteri does this important work on YouTube. Go to YouTube and search for "Kipp Street Recycling" to see the video. Pellitteri gives tours of their east side facility, too, if you are part of a group that is interested.

HOW TO RECYCLE SHREDDED PAPER

Put it into a bag you can see through. Tie it closed tight so no paper can fall out. This bag should be about the size of a basketball.

Anything bigger than about a basketball could burst open in the sorting process and cause your shredded paper to get sorted incorrectly. Do not use paper bags. The sorters need to quickly identify your shredded paper bouncing along a conveyor belt and grab it with their hand. If they can't see what's in the bag, they have to assume it's trash, and there's no time to read what is written on a paper bag, either.

WHERE IS THE BIG DISPOSAL GUIDE?

Older versions of the Recyclopedica had an index that explained the disposal and recycling rules for many items. This year we shortened this section to the 30 most looked-for items.

Why would we do that?

We have an online version that is better than the old index. The online version has more information. We can update the online version when rules change, or when new recycling opportunities become available. And we can add answers to more items.

We understand that our website may not be available to everyone, and some folks are uncomfortable with the internet. It's okay.

If you have a question about something you can't find in this book, please call us and we will help.

Where is the Online Guide?

Go to our website and click on the "How do I dispose of..." link. You can find the online Recyclopedica on many other pages on our website, too.

Scan the below QR code with your smartphone to go directly to the page:



Recyclable?
Check the online
guide!

Materials Banned from the Recycling Cart

Please use the Disposal & Recycling Guide at the back of this book or contact the Streets Division for help. As noted on [page 6](#), any cart containing inappropriate material will not be emptied.

- » Batteries ([page 15](#))
- » Clothes
- » Diapers
- » Electronics ([page 15](#))
- » Extension cords, holiday lights, etc. ([page 15](#))
- » Fluorescent bulbs/tubes
- » Hoses
- » Plastic bags ([page 10](#))
- » Propane tanks (any size)
- » Rope
- » Scrap wood
- » Styrofoam
- » Trash ([page 4](#))
- » Water filters
- » And many other items

Use the guide on [page 10](#) to learn what can go into the recycling cart.

Recyclables Outside the Cart

Streets Division crews will collect excess recycling placed outside of the collection cart two times in a single calendar year, or at the discretion of the field supervisor. This includes cardboard that will not fit into the cart.

You must follow these rules to have your excess recycling picked up. If you do not, our crews will need to leave your extra recycling behind.

- » The recycling cart must be full.
- » Recyclables outside the cart must be placed into a bag you can see through. Clear bags are the best choice.
- » You are allowed a maximum of 10 bags of recyclables in addition to bundles of cardboard. The bags must not weigh more than 40 pounds apiece.

Excess Cardboard Rules

- » All boxes must be flattened.
- » You must tightly bundle your excess cardboard.
 - Use rope, twine, or tape.
 - Do not stuff boxes inside a larger box.
- » The flattened bundles of cardboard should be at most 3 feet wide by 3 feet long (approximately).
- » The bundles of cardboard should be at most 6 inches tall (approximately).
- » You are limited to 10 bundles of cardboard outside the cart.

Other Options for Excess Recyclables

1. Take the recyclables that will not fit into the cart to a drop-off site.
2. Upgrade to a larger size of recycling cart. Contact us for details.

Recycle more, recycle right.

PAPER

Flattened cardboard
Packing paper
& office paper
Mail
Cartons & cups
Pizza boxes

METAL

Aluminum cans
Steel & tin cans
Pots & pans



PLASTIC

Bottles (lid on)
Dairy tubs
Gallon jugs
Deli containers
Clamshell packaging

GLASS

Bottles (remove caps)
Jars (remove lids)



KEEP CLEAN AND DRY



AVOID BAGGING



KEEP CART LID CLOSED

Paper Products

RECYCLE these in the green cart when they are clean, empty, and dry.	» Cardboard » Cardboard boxes (flatten your boxes) » Cardboard cores from paper towels, bathroom tissue, etc. » Cardboard-sided cans » Cartons (milk, juice, etc.) » Cereal boxes (and similar) » Envelopes » Gift wrap (no tissue or foil paper) » Juice boxes	» Junk mail » Magazines and catalogs » Newspapers and all the inserts » Office and computer paper » Outer frozen food boxes » Packing paper » Paper cups (including fast food & coffee cups) » Paper egg cartons » Paper grocery bags » Paper/cardboard backing off retail packages	» Pizza boxes (greasy is okay) » Phone books » Receipts and bills » Soy milk, broth, and coconut water, style-cartons » TetraPaks » Shredded paper must be in a bag you can see through. Tie it closed tight. The bag should be about the size of a basketball.
What's TRASH?	» Diapers » Paper insulation panels from medication deliveries, meal kits, etc.	» Photographs (i.e., Polaroids) » Sanitary napkins	» Soiled and/or stained cardboard & paper products » Tissue paper

Glass Products

RECYCLE these in the green cart when they are clean, empty, and dry.	» Bottles (remove caps) » Jars (remove lids)			» Take fluorescent tubes and bulbs to any retailer that sells them so they can be recycled.
What's TRASH?	» Baking dishes » Bottles & jars with food or other products still inside them » Ceramics » Chemical bottles	» Dishes & bowls » Drinking glasses » Flower pots » Incandescent light bulbs	» Laboratory glass » Ornaments » Windows & mirrors	

Plastic Products

RECYCLE these in the green cart when they are clean, empty, and dry.	» Berry & deli containers » Bottles (soda, water, etc.) - leave on lids » Boxes for spinach, mixed greens, and similar containers » Clamshell containers » Cups if they are #1, #2, or #5 » Dairy tubs with lids on (cottage cheese, etc.)	» Food bottles and jars (mustard, nuts, salad dressing, jelly, canola oil, etc.) » Frozen juice containers » Jugs (milk, juice, vinegar, etc.) - leave on lids » Laundry bottles - leave on lids » Other plastic bottles, jugs, boxes, and similar containers made from plastic #1-7	» Plastic shell/plastic security packaging » Prescription bottles - must be at least 3 inches tall & leave lids on » Soap bottles (hand soap, dish soap, etc.) - remove any pumps » Yogurt containers
What's TRASH?	» Bubble wrap » Buckets » Children's toys (toy trucks, sleds, etc.) » Containers with food still inside » Cups if they are #3, #4, #6, #7 » Food wrap (i.e., Cling Wrap) » Garbage bags	» Motor oil bottles » Online shopping delivery bags » Sheets of insulation from medication or meal box deliveries » Shower curtains and other sheets of plastic » Small plastic bits (bread ties, little packaging clips, etc.)	» Takeout coffee cup lids » Toothpaste tubes » Take plastic bags back to stores for recycling. Do not put them in the recycling cart.

Metal Products

RECYCLE these in the green cart when they are clean, empty, and dry.	» Aluminum foil (balled up to about the size of a baseball) » Aluminum, steel, and tin cans (including paint cans) » Completely empty aerosol cans	» Metal lids from jars & bottles » Metal pipe 18" and less » Metal items weighing less than 10 pounds	» Pots & pans » Small metal appliances, such as toasters (please remove glass)
For a DROP-OFF SITE - NOT FOR THE RECYCLING CART	» Metal items weighing more than 10 pounds » Car parts, like brake pads » Wire hangers	» Chain link fencing » Any metal item too big, too heavy, or too wiry for the collection cart	

LARGE ITEM COLLECTION

How to Get Your Large Items Picked Up

1. Fill out the large item work order form on our website, www.cityofmadison.com/LargeItemWorkOrder
2. Set out the items in your work order on the date you selected.
 - Do not set your items out early. This contributes to neighborhood clutter.
 - Do not set your items out late. You can miss your pickup.
3. Crews arrive during the work week following the set out.

What are Large Items?

Large items are things that require special handling, like microwaves, and bulky items that are too big for your trash cart. Items include:

- | | |
|----------------------|------------------------------|
| » Appliances | » Grills |
| » Carpeting | » Pianos |
| » Exercise equipment | » Tires |
| » Furniture | » And many, many other items |

Rules For Getting Your Large Items Picked Up

- » Items must be out on the set out date.
- » Items must be less than 8 feet long.
- » Keep large items at least 4 feet away from collection carts, brush piles, and yard waste piles.
- » Keep large items at least 4 feet away from trees, cars, utility poles, fire hydrants, mailboxes, and other obstructions.
- » Group your large items. Put metals items and appliances near each other. Put non-metal items, like wood and furniture, near each other. Doing this helps crews collect your items faster.
- » Do not place large items under low hanging wires or branches.

Why wasn't my large item collected on the Sunday I picked in my work order?

In the work order, you are choosing the date you will set items out for pickup.

Collection does not occur on the Sunday you picked.

Our crews will be by your home sometime during the work week following the set-out date you selected to collect what you scheduled for pickup.

Need to Change or Update Your Work Order?

Contact us as soon as possible about changes so we can update your order.

WHAT IF SOMEONE ILLEGALLY DUMPS AN ITEM ON YOUR PROPERTY?

Step 1

Report the crime by contacting the Madison Police Department to file a report at 608-255-2345 or through their Self Reporting line at 608-245-3662.

Step 2

Call the Streets Division that services your home. Provide the clerk with the MPD case number you received after you reported the illegal dumping.

If you are reaching out to the Streets Division with an email or report-a-problem form, include your MPD case number in the message.

ILLEGAL METAL SCRAPPING

It is against Madison ordinance to scavenge metal (and other items) from the curb. Any revenue the Streets Division gets from recycling metal items helps pay for the services we provide. When scrappers take items for their own benefit, the city loses out on this potential revenue to pay for services, which means we need to rely on taxes. Also, some metal items have chemicals inside them that require special handling – like refrigerators or air conditioners. It is unknown how scrappers are handling these harmful substances.

Help prevent scrappers by placing large items out for pickup within the guidelines. And if you see someone illegally gathering items from the curb, contact the non-emergency police number at 608-255-2345 to report the activity.

HOW TO PAY FOR FEE ITEMS IF IT APPLIES TO YOU

Online:

[www.cityofmadison.com/
LargeItemWorkOrder](http://www.cityofmadison.com/LargeItemWorkOrder)

Phone:

- 608-266-4681
- 608-246-4532

Mail:

Send a check along with a note explaining your request.

Make checks payable to City Treasurer.

Send payment and note to:

Streets Division
1501 W. Badger Rd
Madison, WI 53713

or

Streets Division
4602 Sycamore Ave
Madison, WI 53704

In Person:

Streets Division offices:
• 1501 W. Badger Rd.
• 4602 Sycamore Ave.

Will you get a fee sticker?

There is no sticker when you schedule curbside pickup.

If you pay a fee for dropping off an item, you will be mailed a sticker (or handed one if you do it in person).

Who receives large item collection from the curb?

Single-family homes up to properties with eight units can receive large item collection from the curb.

All Madison residents and taxpayers can take items to the drop-off sites.

Large items are free for most – not all – residents

If your recycling is collected by the City of Madison that means you pay the Resource Recovery Special Charge (RRSC). The RRSC covers the cost for the recycling charges for large items.

If the City of Madison Streets Division collects your recycling, you do not pay fees for large item pickup or for dropping off items. You can tell you use the Streets Division for recycling because you use a green cart with the Madison logo on the side.

If you use a metal dumpster for recycling, you do not receive City of Madison service. If the cart you use does not say City of Madison, then you do not have city service.

If you do not have City of Madison collection, then you do not pay the RRSC. And since you do not pay the RRSC, you need to pay the recycling fee for the certain large items that require a charge.

Fees at the Drop-off Sites

If you must pay a fee for an item, and you are taking it to a drop-off site, then you need to pay the fee before you bring it to a drop-off site. Site attendants cannot take payments.

What items have fees?

The list of the only items we charge fees for can be found on [page 14](#). If the item is not listed, then we do not charge for it.

Why did crews only take part of my work order?

Large item collection is two separate crews. One collects metals and appliances for recycling. The other collects items going to the landfill. They will arrive at different times.



Perfect stack of carpet out for pickup. Well done!

Items that Will Not Be Collected

- » Material from work performed by a contractor (i.e., home remodeling)
- » Items small enough to fit into the collection cart that are allowed to be there (see Items Banned from Tan Trash Cart on [page 5](#)).
- » Concrete and items filled with concrete (i.e., basketball hoop post)
- » Chemical drums & containers
- » Other drums and barrels of 25 gallon capacity and higher
- » Pressurized gas containers (i.e., propane tanks, helium tanks, oxygen tanks)
 - If completely empty and the valve is open, these metal containers can be taken to a drop-off site ([page 20](#)).

Special Instructions for Certain Large Items

- » **Area Rugs and Carpet:** Roll it up and tie it or bind the carpeting.
- » **Lawnmowers, snow blowers, etc.:** Drain fuel and oil.
- » **Windows, mirrors, glass doors, etc.:** Tape glass to help control breakage

Other items may have special directions too. You will see them when you make your large item work order online.

Use Your Trash Cart When Possible

You can use your cart for things like small pieces of lumber, ottomans, plastic shelves, and similar things. You could even break apart a toilet and put it inside the trash cart.

Remember – there are items banned from trash carts, like microwaves, televisions, computers, dehumidifiers, tires, and other items as mentioned on [page 5](#).



Donate usable items so we don't send them to the landfill.

NEIGHBOR HAS JUNK OUT FOR WEEKS?

There's three ways to fix this problem:

- 1) Fill out a "Junk, Trash, Debris" Report-a-Problem form to alert Building Inspection of the issue. Building Inspection is the agency that enforces the rules about taking care of your property, including the rules about leaving junk at the curb. You can also call them at 608-266-4551. Report-a-problem forms are online at www.cityofmadison.com/ReportaProblem.
- 2) You can fill out the work order for your neighbor. While this may not help your neighbor learn the right way to have their items picked up, it does get the items on the pick-up schedule.
- 3) You could try talking with your neighbor, too. Be polite. Be friendly. Be helpful. And please do not do this if you feel uncomfortable with it.

Some folks don't know about the work order system. They may have just moved to Madison, or they just don't have much big stuff that needs collecting so they haven't focused on the rules for this service.

Sharing with your neighbor that they need to schedule a work order or giving them a Streets Division phone number to call may help the situation.

If the large item fee applies to you, here are the items that require a charge and the cost. The fee is charged per item.

Fees			
\$35 Fee	\$15 Fee	\$10 Fee	\$5 Fee
Air compressors	Boat motors	Tires - large truck	Tires - car or small truck & off the rim
Air conditioners	"Dorm" refrigerators (refrigerators weighing less than 50 pounds)	Tires - on rim	
Boats	Fluorescent light fixtures		
Copy machines (office sized)	Garden tillers		
Dehumidifiers	Gas grills		
Dishwashers	Items with similar engines to lawn mowers, garden tillers, etc.		
Dryers	Lawn mowers		
Freezers (must remove doors)	Leaf shredders		
Furnaces	Microwave ovens		
Hot tubs	Snow throwers		
Ice machines			
Large commercial appliances			
Large medical devices			
Ovens			
Ranges			
Refrigerators (must remove doors)			
Stoves			
Trash compactors			
Washers			
Water coolers			
Water heaters			
Water softeners			
Wood stoves			

ELECTRONICS RECYCLING

How to Recycle Your Personal Electronics

Take them to a Streets Division drop-off site. You can also take them to a trustworthy private electronics recycler.

By state law, the City of Madison cannot accept electronics from businesses.

More information is available on the city's website, www.cityofmadison.com/eCycle.

Electronics You Must Recycle

State law requires you to recycle these items. Do not put them into the trash. Do not put them in the recycling cart.

- » Cell phones
- » Computer accessories
 - External hard drives
 - Flash drives
 - Game controllers
 - Keyboard
 - Modems
 - Mouse
 - Routers
 - Scanners
 - Speakers
 - Web cameras
 - And so on...
- » Computers
 - All-in-one computers
 - Desktops
 - Laptops
 - Notebook computers
 - Tablets
 - And so on ...
- » Desktop printers
- » Fax machines
- » Media players
 - Blu-ray players
 - DVD players
 - DVRs
 - VCRs
 - And so on...
- » Monitors (all styles)
- » Security cameras
- » Televisions
 - Flat screens
 - CRT / Tube TVs
 - Projection screen TVs
 - And so on...
- » 3D printers
- » TV / monitor accessories
 - Remotes
 - Cable boxes
 - Satellite receives
 - Streaming service receivers (for example, Amazon Fire Sticks, Roku Players, etc.)
 - Cords and A/V Cables
 - Home Theater Systems
- » Video game consoles

More Electronics You Can Recycle

If you bring it to a drop-off site and place it into the electronics area, you can recycle nearly anything powered by a plug or a battery. Cameras, toothbrushes, hair dryers, Christmas lights, extension cords, vacuums, box fans—it's a very long list.

Use the online Recyclopeda tool to learn what to do with the items you have and how to handle them. If the answer doesn't pop up, give us a call.

Do Not Put Televisions, Monitors, Computers, or Printers at the Curb

Take them to a drop-off site for recycling. It is against City ordinance to put them at the curb.

TAKE BATTERIES TO A DROP-OFF SITE

Lithium batteries can cause fires if damaged or handled incorrectly. Recycle your batteries safely at the Streets Division drop-off sites by following the below instructions:

TAPE LITHIUM, NICKEL, & OTHER BATTERIES

Use clear tape to cover the ends of lithium and nickel batteries. Packing tape works best. Be sure to tape the ends (or other metal contact points) of all household batteries more than 12 volts.

HOW TO TELL IF YOU HAVE A LITHIUM BATTERY

Check the label. Look for "lithium," "Li-ion," "Li," or "Li-Po." They can be small silver button batteries for watches or hearing aids. They are often found in cameras, cell phones, and laptops. They come in a variety of forms from AA batteries to big ones powering lawnmowers and bicycles.

HOW TO TELL IF YOU HAVE A NICKEL BATTERY

Check the labels. Batteries with nickel have "NiCD" or "NIMH" written on them. They are rechargeable batteries often found in cordless phones, drills, and other rechargeable devices.

RECYCLE LEAD ACID BATTERIES

Vehicle batteries and other lead acid batteries, like those that power uninterruptible power supplies, must be recycled. They can be taken to a Streets Division drop-off site or an area scrap yard for proper recycling.

DO NOT MIX BRUSH AND YARD WASTE

The Streets Division will not collect it.

Brush and yard waste are different materials that are processed differently at different dump locations. Brush is processed into wood chips, while yard waste is taken to a composter.

OVERSIZED BRUSH PILES

When collection crews encounter a pile that will take more than 10 minutes to feed through their brush chipper, they will assign this pile to be collected by a truck-mounted crane vehicle called a "clam truck." The clam should arrive within three business days to collect the large pile.

WHY DOES BRUSH PICKUP END SO EARLY?

The crews that collect brush are needed to help with picking up the significant volume of leaves generated in the fall. In order for us to have enough workers to keep up with the fall leaf pickup schedule, we need to stop brush collection before fall leaf collection begins. The people who were picking up brush through the spring and summer are the same people who are collecting your leaves in the fall.

WHY ARE THE SET-OUT DATES SUNDAY?

Collection crews will be through sometime during the work-week following your set-out date. If you set out brush after the date given on the website, you may miss your collection opportunity.

BRUSH COLLECTION

When should you put out brush for pickup?

Brush collection starts in the spring and ends before fall leaf collection starts. Every neighborhood will have multiple chances a year.

To learn the exact dates on when you should put out brush, enter your address into the online form on the brush collection website, www.cityofmadison.com/BrushCollection.

Brush Collection Rules

- » Brush must be:
 - Between 18 inches and 8 feet long
 - Less than 8 inches in diameter
- » Pile brush on the terrace or in the right of way space at the end of the public road. Do not put brush directly in the street. Do not block the sidewalks.
- » Keep brush at least four feet away from trees, cars, utility poles, mailboxes, fire hydrants, and other obstructions.
- » Do not mix brush with lumber, railroad ties, pallets or any other wood product.
- » Do not put brush in bags, boxes, or any other container.
- » Stack brush with cut ends facing the same direction.

No Contractors

If you hire someone to trim trees, shrubs, and bushes your contractors must haul it away. Crews will not collect it at the curb. Contractors cannot take it to a free drop-off site.



Crews feed brush into wood chippers by hand.

What do we mean by “brush”?

Think of sticks and branches. It's the woody material you cut from trees, shrubs, and bushes. Brush is not lumber. Take a look at the photo on this page. The photo shows what we mean by brush.

This is how you should take brush for pickup

The photo on this page is an excellent example of how to stack brush for pickup.

The cut ends all face the same direction. The pieces are the right length for our crews to pick up. The branches are not blocking the road or sidewalk.

There is no yard waste mixed with the brush.

There is no trash or lumber present.

This resident did a great job!



BRUSH PROCESSING CENTER

Available to receive brush from contractors. Wood mulch is also available here.

Address: 121 E. Olin Avenue.

Hours: 7:30am to 2:30pm; Monday to Friday.

Phone: 608-266-4911

MULCH & PROCESSING FEES

The prices for mulch and brush processing, along with fees for delivery, can be found in the brush section of the Streets Division website.

BULK CUSTOMER DISCOUNT

If you will be purchasing over 20 semi-truck loads of mulch, you can qualify for discounted bulk rates. Contact the Brush Processing Center for details.

WOOD MULCH

Madison residents can have up to 30 gallons of wood mulch for free.

Larger volumes are available for purchase.

BE READY FOR CHANGES

Future budgets may change how the brush processing center operates, especially for contractors.

Any changes to operations will be posted as news releases and posted to the Bulk Brush Processing webpage of the Streets Division's website.

TRY COMPOSTING

We have information to help you learn how to compost at home. Go to www.cityofmadison.com/Composting.

You can also pickup a free home composting guide from any Madison Public Library location.

RIPPLE EFFECTS

Learn more about protecting our waterways at www.ripple-effects.com.

LEAF-FREE STREETS

Removing leaves from the street before rainstorms is a great way to help protect our lakes. Sign up for email or text alerts from Ripple Effects about pending rainfall so you know when to rake the gutter. Sign up on the Ripple Effects website.

GARLIC MUSTARD AND OTHER INVASIVE SPECIES

Bag garlic mustard and other restricted invasive plants and place into trash. Do not include with yard waste. For additional information about invasive species, visit the Wisconsin DNR's website and search for "invasive plants."

WHAT HAPPENS TO THE YARD WASTE?

Yard waste has been banned from all Wisconsin landfills for well over 30 years. We take your yard waste to a local composter so it can be turned into compost.

LEAF, YARD WASTE COLLECTION

We collect yard waste from the curb during the spring and again in the fall. There is no curbside collection during the summer or winter months.

What is "yard waste"?

Think of things you rake or pull from your lawn or garden. It's leaves, weeds, and grass clippings. It can be vines, sunflower stalks, hay, pinecones, and so on. It's also the little twigs too small for brush collection.

Collection Guidelines

- » Only set out yard waste on the set-out dates.
- » Place leaves and yard waste on the terrace or edge of the road for pickup.
 - **Never put leaves and yard waste in the street or gutter. This is against ordinance.**
- » Do not mix brush with yard waste. Mixed piles will not be collected.
- » Keep piles four feet from utility poles, fire hydrants, street signs, trees, mailboxes, and other obstructions.

Bagging and Covering Leaves Rules

Bagging is not required, but it is appreciated to help keep leaves out of the street.

- » If you choose to bag your leaves, please use compostable paper leaf bags.
- » Keep all bags open at the top.
- » If you use plastic bags, they will be emptied out and the bags will be left behind. Crews may need to rip or tear them open to get the leaves out.
- » You can also cover your leave piles with a tarp.



Yard waste bagged for pickup.

When to Set Out Your Leaves for Pickup

Get the dates from our website, www.cityofmadison.com/Yardwaste.

Enter your address into the form and you will see the dates.

Crews will collect your yard waste during the work week following your set-out date.

Spring set-out dates are published to the website in February or early March. The fall set-out dates are available on the website by late August in most years.

Protect Our Lakes

Managing yard waste correctly protects our lakes. When rain falls on leaf piles in the street, the water pulls nutrients from the leaves and drains them into our lakes and that contributes to toxic algae blooms, murky water, and weeds.

Here's more ways to keep streets leaf-free:

- » Mulch leaves with your lawnmower where they fall in your lawn.
- » Try composting yard waste rather than piling it at the curb.
- » Keep leaves out of the street by raking the street gutter before rain storms
 - See the "Leaf-free Streets" information in the sidebar of [page 18](#).
- » And, of course, following the Streets Division guidelines.

Why is there a mess in the street after fall leaf collection?

Street sweeping is the final step of fall leaf collection. When crews push or pull leaves from the terrace and then shove them into trucks, there can be some leaf debris on the roads.

Street sweepers trail behind leaf pickup crews to gather up the leaf debris.

There are many more leaf pickup crews than sweepers. And sweepers are very slow vehicles. This means there will be a gap between pickup and sweeping. We try to keep the gap as short we can.



Yard waste collection.

STREET SWEEPING

Streets Division crews operate street sweepers from the spring to the winter. Sweepers need water to function so they cannot be used during the cold months.

During the spring, sweepers work to collect all the accumulated salt, sand, and grit from the winter.

During the summer, sweepers rotate through the city multiple times to collect debris in order to prevent it from entering the storm water system.

During the fall, street sweepers trail behind leaf collection crews to vacuum up debris left in the roads after pickup occurs. Leaf pickup crews and sweepers work at different speeds so there will be a gap between when pickup occurs and when sweepers can clean up behind them.

How to Help Street Sweepers

- Sweepers work very slowly. They have a maximum speed of 5MPH when actively collecting debris. So, be patient when encountering them on the roads. Do not tailgate them or cut them off.
- For sweepers to be effective, they need access to the curb, so be sure to follow parking rules, and keep items out of the street that do not belong, such as refuse and recycling carts.



PAINT AND OTHER HAZARDOUS WASTE – DANE COUNTY CLEAN SWEEP

Dane County residents can take paint, chemicals, pesticides and many other hazardous waste items - including things like nail polish and fireworks - to Dane County Clean Sweep. Clean Sweep also accepts electronics and batteries from all Dane County residents.

This site is run by the Dane County Department of Waste and Renewables, not the City of Madison.

Location

They are located on the Dane County landfill campus.

7020 Maahic Way
Madison, WI 53718

Fees?

Dane County charges a per household trip fee and additional fees for certain electronics and appliances. Please contact them for more information about the current rates.

Hours

Monday-Friday, 7:15am to 3:15pm

Saturday, 8:00am to 10:45am

Hours are subject to change due to holidays or other considerations, such as budgetary changes.

Contact

Website:
www.danecountycleansweep.com

Phone: 608-838-3212

DROP-OFF SITES

Stay Informed - Look It Up Before You Load it Up

Drop-off site hours change with the seasons. And locations may change over time.

The annual City of Madison budget determines how many hours we can keep the sites open, too.

Before you load your vehicle, please check our website so you know site locations and hours.

The drop-off site website is www.cityofmadison.com/DropOffSites.

If you do not have access to the internet, give us a call and we can help.

Drop-Off Site Restrictions

- » Only City of Madison residents or taxpayers may use the site.
 - Proof of residency or taxpayer status is required. Acceptable forms of identification include driver's license, tax bill, utility bill, vehicle registration, signed copy of a lease or closing document with name of the drop-off site user and address, etc.
- » Contractors may not use the drop-off site.
 - Anyone who is paid to perform a job is considered a contractor and must find alternative means to dispose of the material their work generated.
- » Site users are restricted to one pick-up truck or small trailer load of all material a day (including brush).
 - If the load is larger than 5' x 8' then it is too large for our sites and should be hauled to the Dane County Landfill or another proper disposal site.



This is the name of our electric compactor for recyclables at our Sycamore Avenue location.

DROP-OFF SITE LOCATIONS AND CONTACTS

East

- » 4602 Sycamore Avenue
- » 608-246-4532

West

- » 402 South Point Road
- » 608-266-4681

Central

- » 121 E. Olin Avenue
- » 608-266-4681

Materials Accepted at All Three Drop-off Sites

- | | |
|--|--|
| » Appliances* | » Scrap metal |
| » Brush | » Scrap lumber & other wood products |
| » Cooking oil | » Styrofoam (molded pieces only, no peanuts) |
| » Electronics (computers, gadgets, televisions, etc.)* | » Tires* |
| » Household batteries | » Trash |
| » Large items (mattresses, furniture, etc.)* | » Yard waste |
| » Lead acid batteries | |
| » Recyclables (cardboard, plastic bottles, etc.) | |

*Fees may apply for some of these items. For a list of items that require fees, see [page 14](#).

What about fees for drop-off?

As explained on [page 12](#), Madison residents who pay the Resource Recovery Special Charge do not pay fees.

Residents who do not pay the special charge are required to pay fees for certain items.

If you do not pay the special charge, you must pay the required fee for the item before dropping the item off at the drop-off site.



Drop-off sites can be busy places!

MOTOR OIL DROP-OFF SITES

The City of Madison Engineering Division provides motor oil drop-off sites for the public. In these containers, residents can also dispose of transmission fluid, brake fluid, and power steering fluid.

The sites are periodically closed for a random test for contamination. The sites are generally open again 24 hours after the testing has been completed.

Previous motor oil drop-off sites have been closed due to contaminants, so please be sure you are disposing of the correct fluids and oil and these sites.

A list of available City locations can be found at www.cityofmadison.com/WasteOilDropSites

Private Businesses

Several oil change and motor vehicle service providers will accept your motor oil. Some may charge a small fee. For a list of available locations and their contact information, check the Dane County Department of Waste & Renewables disposal directory at <https://landfill.countyofdane.com/recycle-locations>.

WHERE ARE THE DROP-OFF SITE HOURS?

The hours change with each annual budget, and they change seasonally. The site hours are not included in this year's booklet because we did not want to cause confusion.

You can get the current hours from our website. Or we can mail you a paper copy of this year's hours. To get the paper copy, just give us a call.

URBAN FORESTRY INFO

Office Hours

- Monday – Friday
- 7:00am – 3:00pm

Contact

Phone: 608-266-4816
Email:
forestry@cityofmadison.com

After-Hours Tree Emergency

- Call 911

PRIVATE PROPERTY TREES

Homeowners are responsible for trees on their property. We recommend you consult with a certified arborist. Visit the Wisconsin Arborist Association website to find one (www.waa-isa.org).

If you are concerned about a tree on your neighbor's property and they are not taking appropriate action with the tree, you can contact Building Inspection to begin an investigation.

PRUNING SCHEDULE

Trees planted within last 10 years: pruned every 3 to 5 years.

Tree planted more than 10 years ago: pruned once every 10 years.

Follow along where we are working on our Pruning Work Map on our website.

INVASIVE SPECIES

We treat 10,000 trees to save them from the emerald ash borer. When the spongy moth population spikes, we will take steps to help fight back. Whatever the invasive pest may be, we remain committed to protecting our shared urban forest.

URBAN FORESTRY

What does Urban Forestry do?

We plant, remove, and care for the trees along Madison streets. Our goal is to create a vibrant and diverse urban canopy that will benefit all of us.

How to Report Tree Problems

For Routine Problems

For example, a troublesome limb, report a worry about a sick tree, report a low branch, etc.

- » Use the report-a-problem form for Tree Concerns at www.cityofmadison.com/ReportaProblem.
- » Contact us directly at 608-266-4816

For Tree-Related Emergencies

What is a tree-related emergency? A tree falling and blocking a road is one possible example.

- » Call 911
Emergency dispatch operators can reach on-call arborists 24/7 to help.

For Trees on Power Lines

- » Call Madison Gas and Electric: 608-252-7111
Urban Forestry crews cannot work on trees on power lines. You need to call MGE.



90% of the trees planted in 2024 were large canopy trees.

Urban Forestry Special Charge

This charge is on your monthly Municipal Services Bill. You probably call it your water bill, but there are charges for other city services on this bill besides your water usage.

The Urban Forestry Special Charge (UFSC) pays for the entire operation of Urban Forestry staff.

More details about the special charge, including this year's rate and how the rate is calculated for different kinds of properties around Madison, can be found at www.cityofmadison.com/Forestry.

How Urban Forestry Chooses Trees to Plant

Our trained staff selects the right tree for the right spot. We need to consider nearby tree species while also considering overhead wires and underground pipes. We also need to pick a tree that can grow in the narrow grassy spots between the sidewalk and the curb and be able to thrive in this spot for decades to come while our climate changes.

Stump Removal

We will remove the stump after we remove a tree next to the road. There are many steps in the process, and it can take several months sometimes to get the stump out, depending on when the tree is removed, equipment availability, weather, and many other factors. The process generally follows these steps:

1. Tree removal creates the stump
2. Site inspection to evaluate for replanting
3. Diggers Hotline is contacted so they can flag if underground utilities are present.
4. Our crews use equipment to find the precise depth and location of underground utilities.
5. Removing the stump with a grubber.
6. Cleaning up the site.
7. Replanting, if appropriate. Replanting occurs only in the spring or the fall.



When city trees fall in storms, our trained arborists respond to help.

WHEN WILL URBAN FORESTRY REMOVE TREES?

If a tree is dead or dying, or poses a public safety threat, it will be removed.

We are involved with public works projects to advocate for trees. We try and change projects to preserve trees.

If tree removals are unavoidable for a project to continue, we work not only to find suitable new replanting sites near the project for replacement trees, but also to improve soil conditions at the new site so the new tree can thrive.

CARING FOR A NEW TREE

Here's how you can help care for a new tree in front of your home:

- Water the tree, depending on rainfall. Soil should be moist.
- Maintain the mulch ring to help the tree retain moisture. Mulch should be about 3-4 inches in depth and keep the mulch away from the bark of the tree.
- Don't hit the tree with your string trimmers or lawnmowers.
- Don't apply lawn chemicals near the tree
- Leave the stakes alone. Our arborists will return to remove them after the roots have established. This is usually one growing season.

CERTIFIED ARBORISTS

Urban Forestry arborists are certified by the International Society of Arboriculture (ISA). We have staff with ISA tree risk assessment qualifications. Many of our people have degrees in urban forestry. In 2025, the City of Madison Forester was the President of the Wisconsin Arborist Association.

STUDENT MOVE OUT

cityofmadison.com/MovingDays

Special Rules

Since the downtown August moving days are unique, it requires a special response.

We have special rules for the defined "student move out area" that are only in effect during the window of time we call the August moving days.

We have a map available on our website that shows the boundaries of the student move out area. The website is www.cityofmadison.com/MovingDays.

On the website, we also explain when the "moving days" rules start and end for the student move out area of the city.

The website also explains our increased large item and cart emptying services we provide during the moving days for the student move out area.

If these rules affect you, or someone you know, we strongly encourage you to visit our moving days page to learn more.

Follow the Rules and Help Our Crews

When you follow the rules, especially during the move out, you help us work faster and safer.

Stack things neatly. And use the collection carts the right way. These two small steps help us gather everything you cannot donate efficiently.

MOVE OUTS AND CLEANOUT ADVICE

If you're part of the annual August moving days downtown, or just moving out or cleaning out a house, you can follow these three simple steps to help make it simpler for you.

Step One: Make a Plan

Use a checklist or create a system to help you organize the items or rooms into things you need (or want) to move, and the things you do not.

Step Two: Donate & Resell

From your items that you do not want to move, please use some of the many great options we have to donate or resell items locally. A partial list of ideas can be found at www.cityofmadison.com/ReUse.

We have so many thrift stores, specialty stores for hobbyists and collectors, and active zero waste groups online that you can probably find a home for most of your usable items.

Step Three: Follow the Collection Rules

For the items you cannot sell, donate, or give away, you need to follow the collection rules for proper disposal. Use this guide for the rules about trash and recycling outside the cart, and the rules for large item pickup, and the drop-off sites.

Some cleanouts are so big that it will be easier for you to rent a dumpster from a private company. You may need a Street Occupancy Permit from the Traffic Engineering Division for this. For this permit, call 608-266-4751 or email traffic@cityofmadison.com.



Don't let good things go to the landfill. Donate your usable items!

FOOD SCRAPS

We send thousands of tons of food into the landfill every year. This is food that could feed hungry people, and scraps that could be composted. We can be better. Here's how:

Compost Your Food Scraps

Options to compost your scraps continue to grow in Madison.

The Streets Division has drop-off opportunities at neighborhood farmers' markets. Dane County has installed drop-off points around Madison. And there are private businesses that offer food scraps recycling, too.

You can find out more information about food scraps composting options on our website, www.cityofmadison.com/Foodscraps

Prevent Food Waste: Plan, Use, Create

Stopping food waste is more than just composting the scraps we make – it's also preventing waste.

On our food scraps website, we have links to resources to help you prevent the food scraps from meal planning to food storage to ways to use past-their-prime foods.

We also have links to food donation resources in the area so you can create opportunities for others with the excess food you have.

The website for all of this information is available at www.cityofmadison.com/Foodscraps.



Collecting food scraps at the East Madison Farmers' Market. There are other drop-off spots around Madison.



WHAT'S THE PROBLEM WITH SALT?

Salt spread on roads, sidewalks, driveways and parking lots infiltrate into our waterways, including the water we drink. Learn more about salt usage at www.cityofmadison.com/winter.

BE SALT WISE

If you must use salt, you can learn how to use the correct amount at www.wisaltwise.com.

CHOOSE A CERTIFIED SALT APPLICATOR

If you are hiring someone to clear your sidewalk, driveway, or parking lot, look for contractors who have received their Winter Salt Certification from the Engineering Division.

MAILBOX DAMAGED?

Document the damage and report it at www.cityofmadison.com/ReportaProblem. A supervisor will inspect the mailbox to see if you are eligible for a reimbursement.

FROM MADISON TO MOJAVE

Madison has over 1,800 miles of traffic lanes. That's the distance from here to the Mojave Desert. That doesn't consider all the bus stops, alleyways, paths, and sidewalks. That's a lot of pavement!

HOW TO HELP SNOWPLOWS

- Don't put carts in the street.
- Follow parking rules if you must park on the street.
- Make good choices when driving—be slow, patient, and alert.

WINTER INFORMATION

For all things winter, go to www.cityofmadison.com/Winter. On this page, you can get winter alerts and texts, see the map for the Snow Emergency Zone, find the free sand locations, and so much more.

Salt Routes & Snow Plowing Updates

When it snows and sticks to the roads, plows are sent out to the salt routes. These are the main thoroughfares of Madison.

Each time plows are dispatched, we publish Snow Plowing Updates so you can know what to expect on the roads and what to expect from our response. You can sign up to get these free updates on the winter website.

Alternate Side Parking Rules

From November 15 to March 15, cars parked on the street outside of the Snow Emergency Zone must follow alternate side parking rules every night regardless of weather.

- » On even-numbered days, your vehicle must be parked on the even house-numbered side of the street between 1:00am and 7:00am.
- » On odd-numbered days, your vehicle must be parked on the odd house-numbered side of the street between 1:00am and 7:00am.

Snow Emergency Zone Information

The Snow Emergency Zone (SEZ) is the isthmus and certain nearby neighborhoods. If you park within the SEZ, you only need to follow alternate side parking rules during declared snow emergencies. You can see a map of the SEZ on the winter website.

Follow Parking Signs to Help Snowplows

Posted parking signs are in effect during declared snow emergencies, too.

Citywide Plowing & Declared Snow Emergencies

All City of Madison streets will be plowed when there are three or more inches of snow on the roads and the storm is at or near its end.

Snow emergencies are declared to assist with plowing operation by requiring everyone throughout Madison to follow alternate side parking rules. Fines for violating the alternate side parking rules increase during a snow emergency, and you are more likely to be towed.



Our crews respond 24/7 to snowstorms.

TOP 30 ITEMS

Below is a list of the 30 most searched for items from the online Recyclopedica as of April 2025.

You can search for items by scanning QR code on this page with your phone, or going to the "How do I dispose of..." section of www.cityofmadison.com/Streets.



Items	Instructions
Cardboard	Recycling. Drop-off site accepts cardboard, too.
Carpet and Padding	Large item work order or drop-off site. Roll up carpeting and or padding. Tie it so it cannot flop open. Rolls must be shorter than 8 feet.
CDs, DVDs, & VHS Tapes	Donate if possible. Trash at your home. Electronics area at drop-off site.
Clothes & Shoes	Donate if usable. Trash if you do not want to donate it.
Computers	Drop-off site only for electronics recycling. Banned from curbside pickup.
Dehumidifier	Large item work order or drop-off site. Fees may apply.
Fluorescent Bulbs & Tubes	Return to a retailer that sells fluorescent bulbs. Local rules require retailers that sell these bulbs to recycle them.
Dirt, Rock, Stones, etc.	Not accepted by the Streets Division. Check the Dane County Waste & Renewables' Recycling and Disposal guide for options. You can find it online here: https://landfill.danecounty.gov/recycle-locations
Furniture	Consider donating if usable. Large item work order or drop-off site.
Greasy Pizza Box	Recycling. Remove excess food and any plastic bits.
Hardcover Books	Consider donating or reselling or using Little Free Libraries. You can take hardcover books to the Waste Management facility at 2200 Fish Hatchery Rd. You can call them at 608-251-2115 for questions. Do not place whole hardcover books in recycling cart.
Household Batteries	Drop-off site. Use battery guidance on page 15 to prepare your batteries
LED Light Bulbs	Trash cart at your home. Electronics area at drop-off site
Liquid Paint	Dane County Clean Sweep. No city collection. For details, go to www.danecountycleansweep.com
Lumber / Scrap Wood	Large item work order or drop-off site. If the pieces are small, use the trash cart.
Mattress and / or Box Spring	Large item work order or drop-off site.
Medications	Take to nearby MedDrop location. For locations, visit https://safercommunity.net/meddrop
Microwave	Large item work order or drop-off site. Fees may apply.
Plastic Bags	Return to retailer for recycling. Some bags may be donated to local thrift stores or food pantries.
Printers	Drop-off site only for electronics recycling. Banned from curbside pickup.
Refrigerator	Large item work order or drop-off site. Fees may apply.
Scrap Metal	Drop-off site. Scrap metal and bulky metal items are too heavy for the recycling cart.
Shredded Paper	Place into see-through bag. Tie the bag shut tight. The bag must not be larger than a basketball. Put into recycling at your home. Drop-off site rules are the same.
Small Electronic Kitchen Appliances (Hand mixers, Toasters, Etc.)	Donate if usable. Drop-off site for recycling. Trash cart at your home.
String Lights / Christmas Tree Lights	Drop-off site in the electronics area or trash cart at the curb.
Styrofoam	Drop-off site to recycle it, or trash cart at your home.
Television	Drop-off site only for electronics recycling. Banned from curbside pickup.
Toilet	Large item work order or the trash cart
Tires	Large item work order or drop-off site. Fees may apply.
Vacuum	Trash at the curb or large item work order. Electronics area at drop-off site for recycling.

STREETS AND URBAN FORESTRY DIVISION CONTACTS

Phone Numbers

- » West Office: 608-266-4681
- » East Office: 608-246-4532
- » Urban Forestry: 608-266-4816
- » Recycling Coordinator: 608-267-2626
- » Wood Mulch & Brush Processing Center: 608-266-4911
- » Winter Parking Hotline: 608-261-9111
- » Special Charge Hotline: 608-243-5899

Emails

- » Streets@cityofmadison.com
- » Forestry@cityofmadison.com



Use the Report-a-Problem Forms

You can report routine problems online. The form generates an email that is sent to our supervisors so we can dispatch trucks to fix the problem as soon as we can. The forms are available at www.cityofmadison.com/ReportaProblem.

Other Important Phone Numbers

Concern	What You Need & Number to Call
Beltline Problems	Dane County Highway - 608-266-4261
Chemical Disposal	Dane County Clean Sweep - 608-838-3212
Curb Painting	Traffic Engineering - 608-266-4761
Dead Animal in the Road	Engineering Services Division - 608-266-4430
Landfill	Dane County Landfill - 608-838-9555
Manhole Cover Repairs	Engineering Services Division - 608-266-4430
Neighbor Not Mowing Their Lawn	Building Inspection - 608-266-4551
Neighbor Not Putting Carts Away	Building Inspection - 608-266-4551
Neighbor Not Shoveling Sidewalk in Winter	Building Inspection - 608-266-4551
Neighbor Leaving Large Items Out Too Long	Building Inspection - 608-266-4551
Parking Rules?	Parking Enforcement - 608-266-4622
Permit for Dumpsters in the Road	Street Occupancy Permit - 608-266-4761
Permit for Storage Containers for Moving, Etc.	Street Occupancy Permit - 608-266-4761
Road Construction	Engineering - 608-266-4751
Sidewalk Repairs or Replacements	Engineering - 608-266-4751
State Street Litter Containers	Parks Mall/Concourse - 608-266-6031
Storm Drain Problems	Engineering Services Division - 608-266-4430
Street Lights	Traffic Engineering - 608-266-4761
Street Names	Traffic Engineering - 608-266-4761
Street Resurfacing Projects	Engineering - 608-266-4751
Traffic Lights	Traffic Engineering - 608-266-4761
Traffic Signs	Traffic Engineering - 608-266-4761
Trash or Recycling Can in a Park	Parks Division - 608-266-4711
Water Main Break	Water Utility - 608-266-4661
Water Main Break Road Repair	Water Utility - 608-266-4661