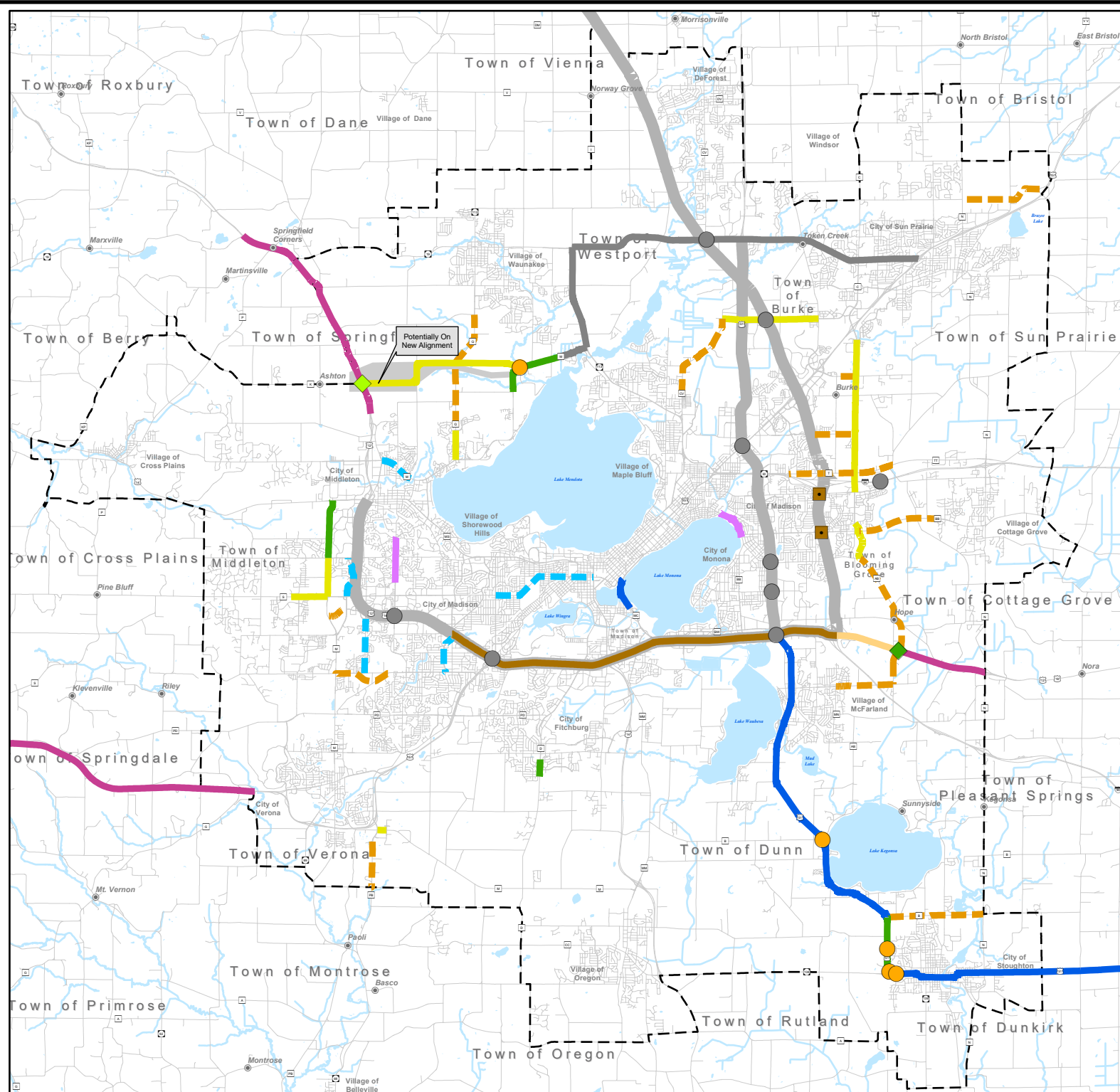


Major Roadway Projects and Studies

Madison Area, Wisconsin



- Bridge Capacity Expansion (Planned)
 - Major Intersection Improvement (Programmed)
 - ◆ New or Improved Interchange (Programmed)
 - ◆ New or Improved Interchange (Planned)
 - Study Potential Interchange or Intersection Improvement
 - Freeway Capacity Expansion: Flex Lanes (Programmed)
 - Freeway Conversion (Programmed)
 - Official Map For Potential Freeway Conversion
 - Major Arterial Roadway Reconstruction (Programmed)
 - Major Corridor Studies (Current)*
 - Major Corridor Studies (Recommended)
 - Arterial Roadway Capacity Expansion (Programmed)
 - Arterial Roadway Capacity Expansion (Planned)
 - Reserve ROW Official Map, Manage Access
 - Arterial Roadway Capacity Reduction (Programmed or Planned)
 - Study Potential Capacity Reduction
 - MPO Planning Area Boundary
- * Improvements Pending EIS and Funding

Prepared by staff to the:

 Date Revised: 5/31/2022

Source Info:
 Street Data: 2022 (MPO/CDLIC)
 Projects and Studies 2022 (MPO)
 Hydrography: 12001, 124,000 (WIDNR)
 MPO Boundary: 2013 (MPO)

Author: [illegible]
 Path: W:\MPO_GIS\GIS_Users\Gis_Ar\Map\Map\TownRTP_2022_10PlanRTP_2022_10Plan.mxd

0 1 2
 Miles
 Lambert Conformal Conic Projection
 WISCONSIN- Dane, NAD 83(91)