

2013 Jobs Located by Land Use

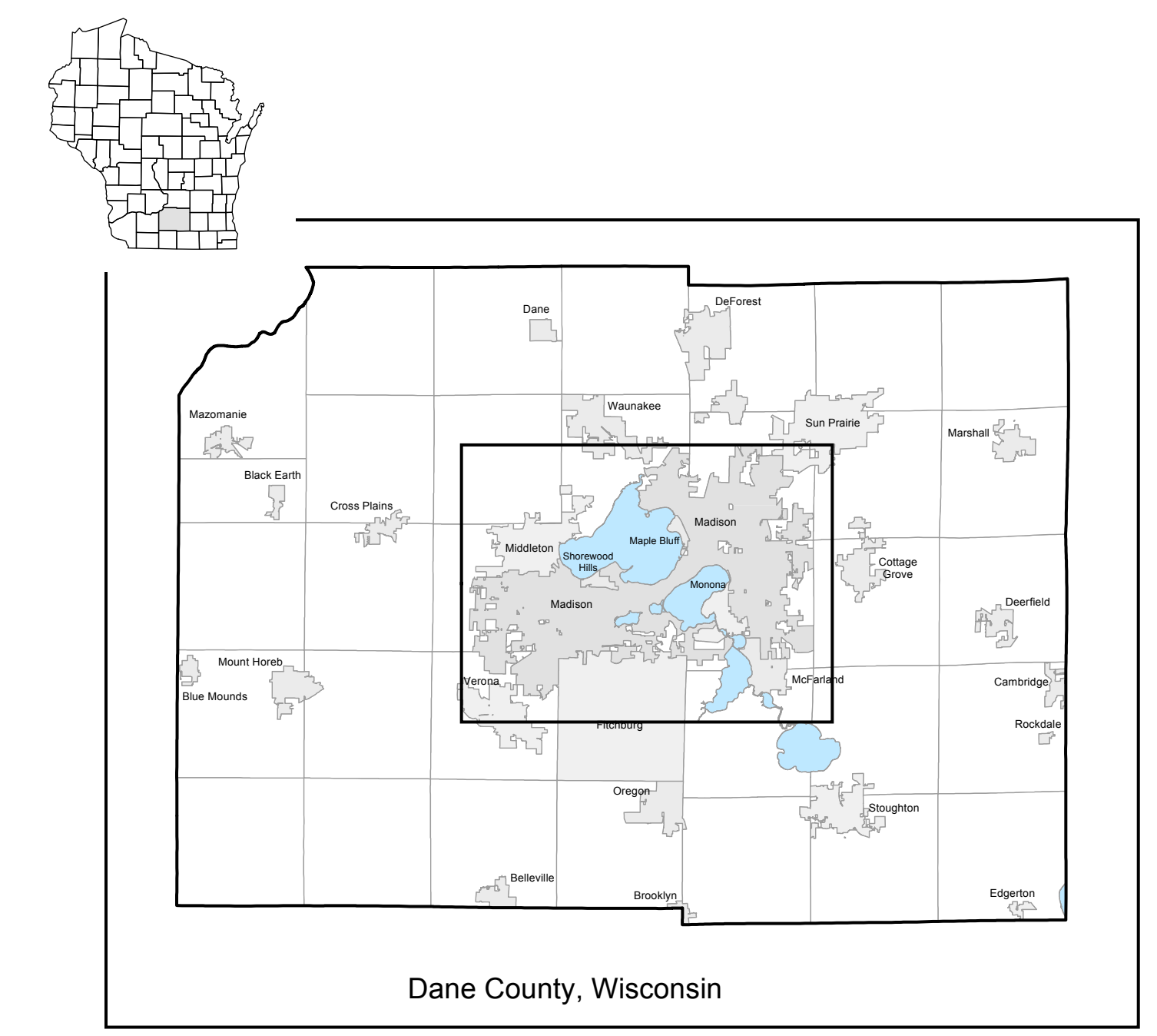
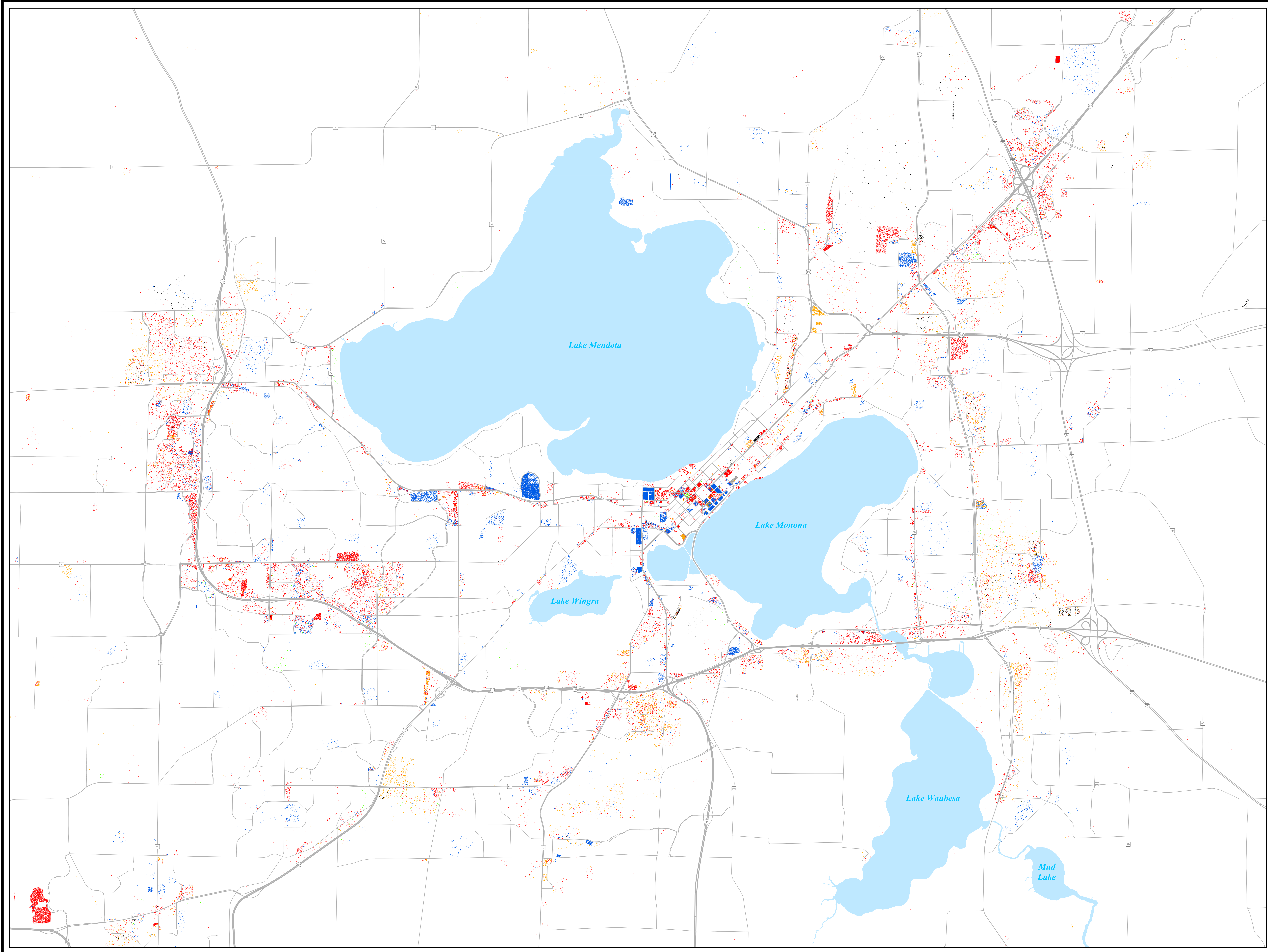
Madison Area

Dane County, Wisconsin

One Dot = One Job

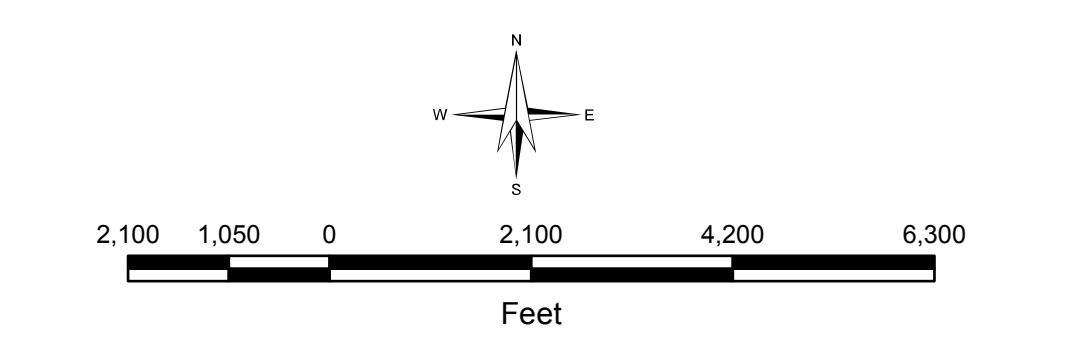
- Commercial - Retail Sales and Services
- Industrial
- Institutional/Governmental
- Communication and Utilities
- Transportation
- Recreation

Note:
Total 2013 Jobs are tabulated by 2010 Census Block. Dots are placed randomly within the Census Block, but are restricted to non-residential land use parcels.



Prepared by staff to the:
T.P.B.
Transportation Planning Board
A Metropolitan Planning Organization (MPO)

Date Revised: 9/10/2015



Coordinate System: NAD 1983 HARN WISCRS Dane County Feet
Projection: Lambert Conformal Conic

Source Info:
Street Data: 2015 (MAPTR)
Primary Jobs: 2013 (BLS/D, U.S. Census Bureau)
Land Use: 2010 (CARPC)

Map File: \\snp\c00001\workspace\GIS\MapServer\20150910\jobs_by_land_use.mxd
Date Saved: 9/10/2015 3:05:36 PM
User: jklima