



MADISON PARKS

2024

ANNUAL REPORT

BY THE NUMBERS

City of Madison Parks Division
330 E. Lakeside Street
Madison, Wisconsin 53715
608-266-4711
cityofmadison.com/parks

**MADISON
PARKS**

Equity • Public Health • Sustainability • Adaptability

Dear Madison Residents,
In 2024, Madison Parks continued to bring our community together through events like Ride the Drive, Parks Alive, and the Learning Series sponsored by the Madison Parks Foundation. Volunteers, neighbors, and partners united to restore land, plant natives, and promote sustainability throughout our parks.

While ice skating saw a decline, we embraced change with the addition of a new futsal court, responding to the evolving recreational interests of our community. Moving forward, we are committed to delivering an excellent parks system. We will continue to focus on enhancing sustainability, fostering engagement, and providing diverse opportunities for recreation. The future is bright, and we look forward to the continued support of our vibrant community.

Sincerely,



Eric Knepp
Parks Superintendent

Cover: Warner Park beach managed meadow



364
acres of
managed
meadows



Staff volunteer day at Parks Lakeside Offices

Equity • Public Health • Sustainability • Adaptability



RIDE DRIVE

The Return of Parks & Open Streets.



12,000+
participants



Ride the Drive at Olin Park
Photo by Valentin Llanas



Madison Mayor Satya Rhodes-Conway
at Ride the Drive 2024

62
Vendors &
Exhibitors

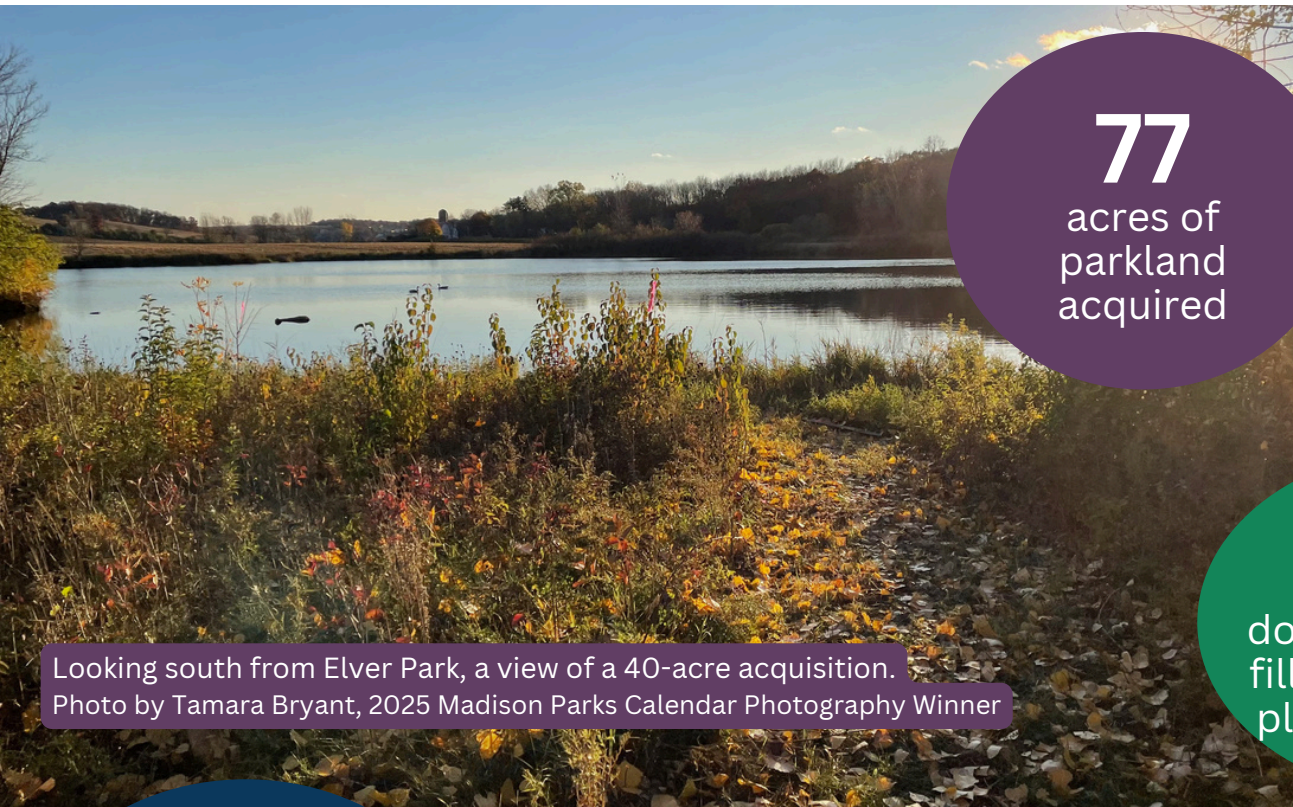
\$10K
donated by
Madison Parks
Foundation

6
parks



Ride the Drive at Law Park
Photo by Kristie GoForth

Equity • Public Health • Sustainability • Adaptability



77
acres of
parkland
acquired

Looking south from Elver Park, a view of a 40-acre acquisition.
Photo by Tamara Bryant, 2025 Madison Parks Calendar Photography Winner



119
downtown planters
filled with seasonal
plants and flowers



372,314

Olbrich Botanical
Gardens visitors
8% increase over
2023

Olbrich After Hours on the Great Lawn at Olbrich Botanical Gardens.
Photo by Focal Flame Photography



Equity • Public Health • Sustainability • Adaptability



Parks Alive, Elver Park



Parks Alive, Hammersley Park

37
Parks Alive
events

4,214
Attendees

35
Sina Davis
Movies in
the Park



Sina Davis Movies in the Park, Galaxy Park

4
electric park
ranger trucks



Equity • Public Health • Sustainability • Adaptability



McPike Park by Natasha Akulenko

273
permitted park
events

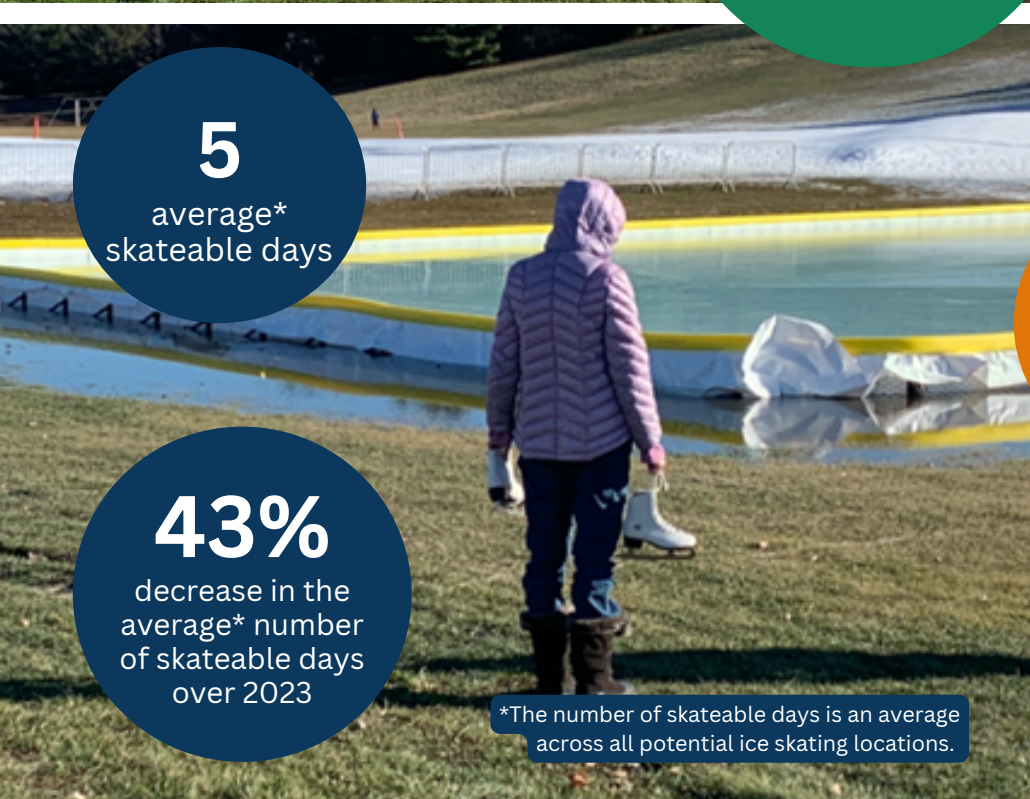


Turville Point Conservation Park
Photo by Danielle Dragan



1
new nature
play area

Olbrich Park



5
average*
skateable days

43%
decrease in the
average* number
of skateable days
over 2023

*The number of skateable days is an average
across all potential ice skating locations.

Equity • Public Health • Sustainability • Adaptability



2,150

Goodman Pool
scholarships

42,154

Goodman Pool
admissions



1

new futsal
court
opened

Penn Park Futsal & Basketball Courts
Photo Courtesy of Musco Lighting



24,908

athletic
reservation
hours

Demetral Park
Photo by Wendy Murkve



3

bench swings
installed

Tenney Park (shown) and Olbrich Park (2)

Equity • Public Health • Sustainability • Adaptability



Earth Day Challenge , Penn Park
Photo Courtesy of Madison Fire Dept.

29,666
volunteer hours
across the Parks
Division



Warner Park Community Recreation Center

1,100

KNOW* Programming
Hours at Warner Park
Community
Recreation Center



*Kids Need Opportunities at Warner
Funded by Madison Parks Foundation



Volunteer Appreciation Celebration
Parks Lakeside Offices

Equity • Public Health • Sustainability • Adaptability

22

Learning Series
events sponsored by
Madison Parks
Foundation



411

acres burned in
prescribed fires



12,720
park visits by
rangers



Equity • Public Health • Sustainability • Adaptability

1

adopted master
plan for
Madison LakeWay



John Nolen Drive at Ride the Drive 2024
Photo by Valentin Llanas



105

disc golf kits
checked out from
Madison Public
Libraries

4,961
disc golf
permits
purchased



3

redesigned and
opened disc golf
course holes at
Elver Park



Equity • Public Health • Sustainability • Adaptability



25

community events
at The Glen
Golf Park
67% increase over
2023



160,502

rounds of golf
played
5% increase over
2023



Feb. 25

earliest opening
day on record

2024 ANNUAL REPORT

City of Madison Parks Division
330 E. Lakeside Street
Madison, Wisconsin 53715
608-266-4711
cityofmadison.com/parks

**MADISON
PARKS**