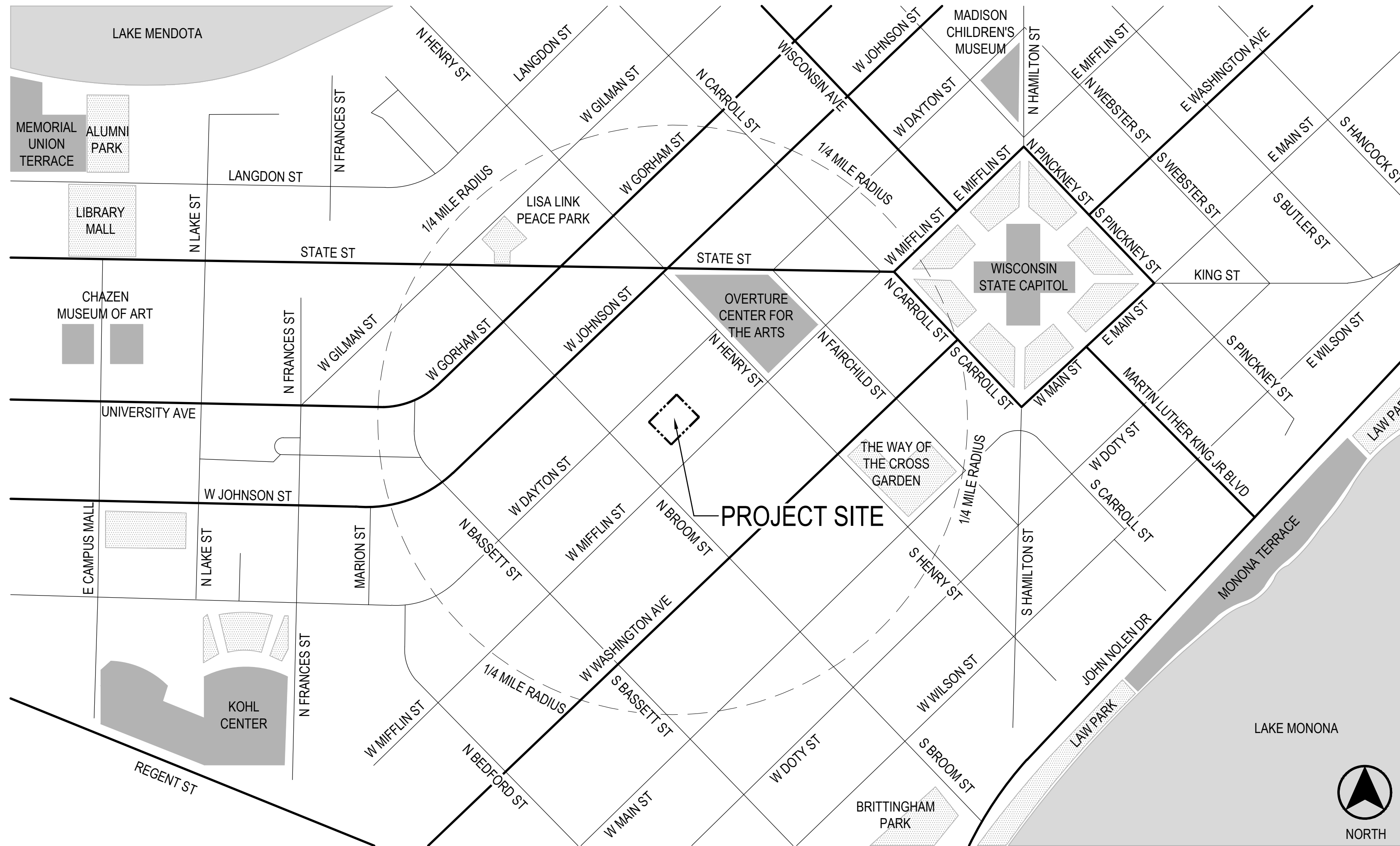


MADISON SENIOR CENTER COURTYARD

330 WEST MIFFLIN STREET
MADISON, WI 53703



1 PROJECT LOCATION MAP
SCALE: NTS

SHEET INDEX

- T000 - TITLE SHEET
- T100 - CONTEXTUAL SITE INFORMATION
- C100 - SITE SURVEY
- C200 - CONCEPTUAL GRADING PLAN
- L100 - LAYOUT AND MATERIAL PLAN
- L200 - PLANTING PLAN
- L300 - LANDSCAPE RENDERINGS
- L301 - LANDSCAPE RENDERINGS
- E100 - CONCEPTUAL ELECTRICAL PLAN
- E200 - CONCEPTUAL ELECTRICAL DETAILS
- E300 - ELECTRICAL CUT SHEETS

PROJECT INFORMATION

CLIENT
CITY OF MADISON PARKS DIVISION
210 MARTIN LUTHER KING JR. BLVD
MADISON, WI 53703
CONTACT: MIKE STURM 608.267.4921

STRUCTURAL & ELECTRICAL ENGINEER
MEAD & HUNT
2440 DEMING WAY
MIDDLETON, WI 53562
CONTACT: MARK STIFTER 608.443.0561

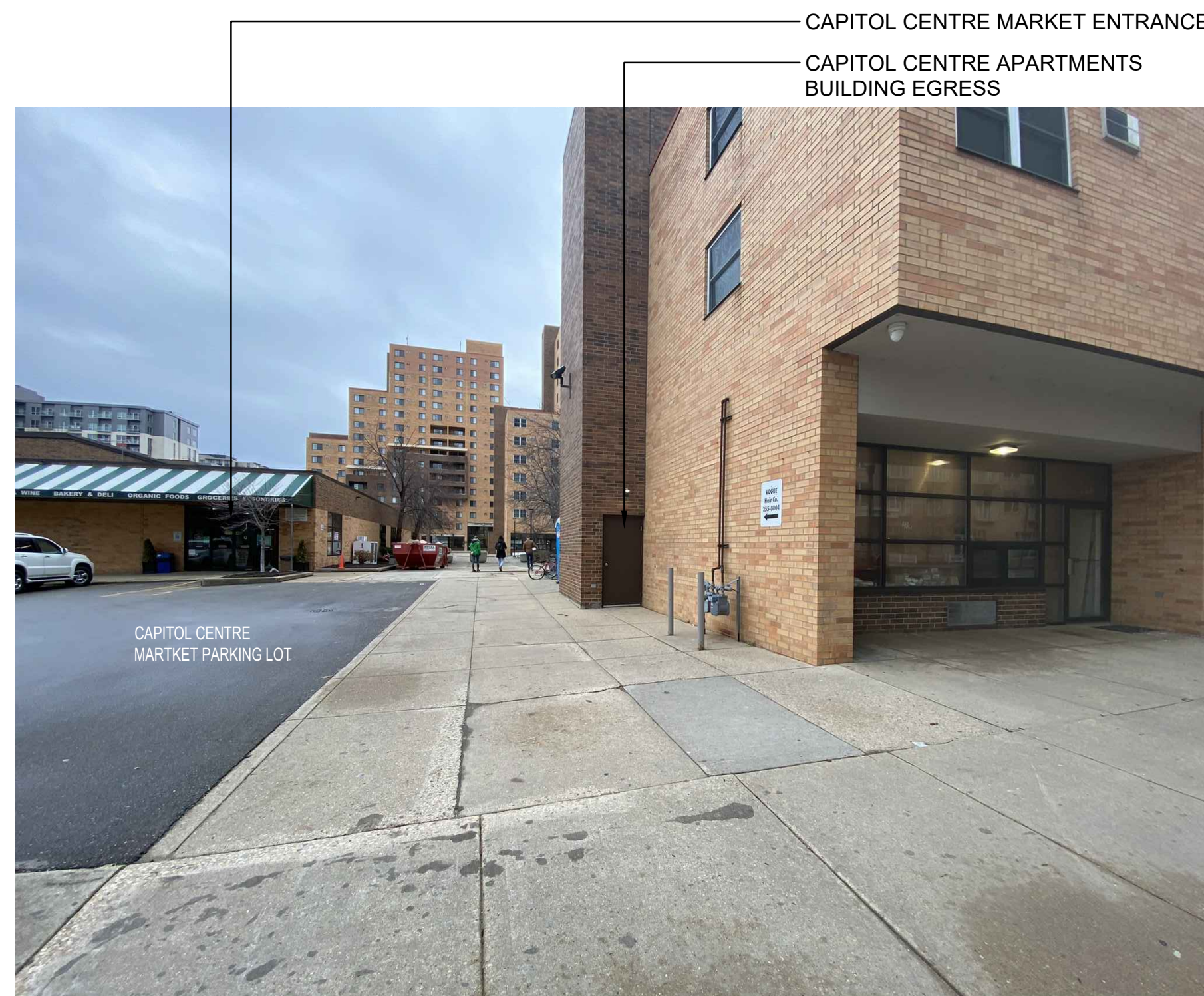
LANDSCAPE ARCHITECT
SAIKI DESIGN, INC.
1110 S. PARK ST
MADISON, WI 53715
CONTACT: ABBIE MOILLEN 608.405.8149

CIVIL ENGINEER
BURSE SURVEYING & ENGINEERING
2801 INTERNATIONAL LN | SUITE 101
MADISON, WI 53704
CONTACT: MICHELLE BURSE 608.250.9263

CLIENT		CITY OF MADISON PARKS DIVISION	
210 MARTIN LUTHER KING JR. BLVD MADISON, WI 53703			
PROJECT		MADISON SENIOR CENTER COURTYARD	
330 WEST MIFFLIN STREET MADISON, WI 53703			
DRAWING		TITLE SHEET	
SCALE	DATE		
NTS	08/01/2022		
DRAWN BY	CHECKED	REVIEWED	
SH	AM		
APPROVED	DEPT. APPROVAL		
SEAL	SEAL		
NOT FOR CONSTRUCTION			
DEPT. PROJECT NO.	DRAWING NO.		
CONSULTANT'S PROJECT NO.	2022-001		
TENDER NO.	T000		



1 W MIFFLIN ST ENTRANCE - FACING SOUTHEAST
SCALE: NTS



2 W MIFFLIN ST ENTRANCE - FACING NORTHWEST
SCALE: NTS



3 W MIFFLIN ST ENTRANCE - CAPITOL CENTRE MARKET
SCALE: NTS



4 W DAYTON ST ENTRANCE - FACING NORTHWEST
SCALE: NTS



2 W DAYTON ST ENTRANCE - FACING SOUTHEAST
SCALE: NTS



3 W DAYTON ST ENTRANCE - CAPITOL CENTRE MARKET
SCALE: NTS

CLIENT		CITY OF MADISON PARKS DIVISION
PROJECT		MADISON SENIOR CENTER COURTYARD
DRAWING		CONTEXTUAL SITE INFORMATION
SCALE	DATE	
NTS	08/01/2022	
DRAWN BY	CHECKED	REVIEWED
SH	AM	
APPROVED	DEPT. APPROVAL	
SEAL	SEAL	
DEPT. PROJECT NO.		DRAWING NO.
CONSULTANT'S PROJECT NO.		T100
2022-001		
TENDER NO.		

210 MARTIN LUTHER KING JR. BLVD
MADISON, WI 53703

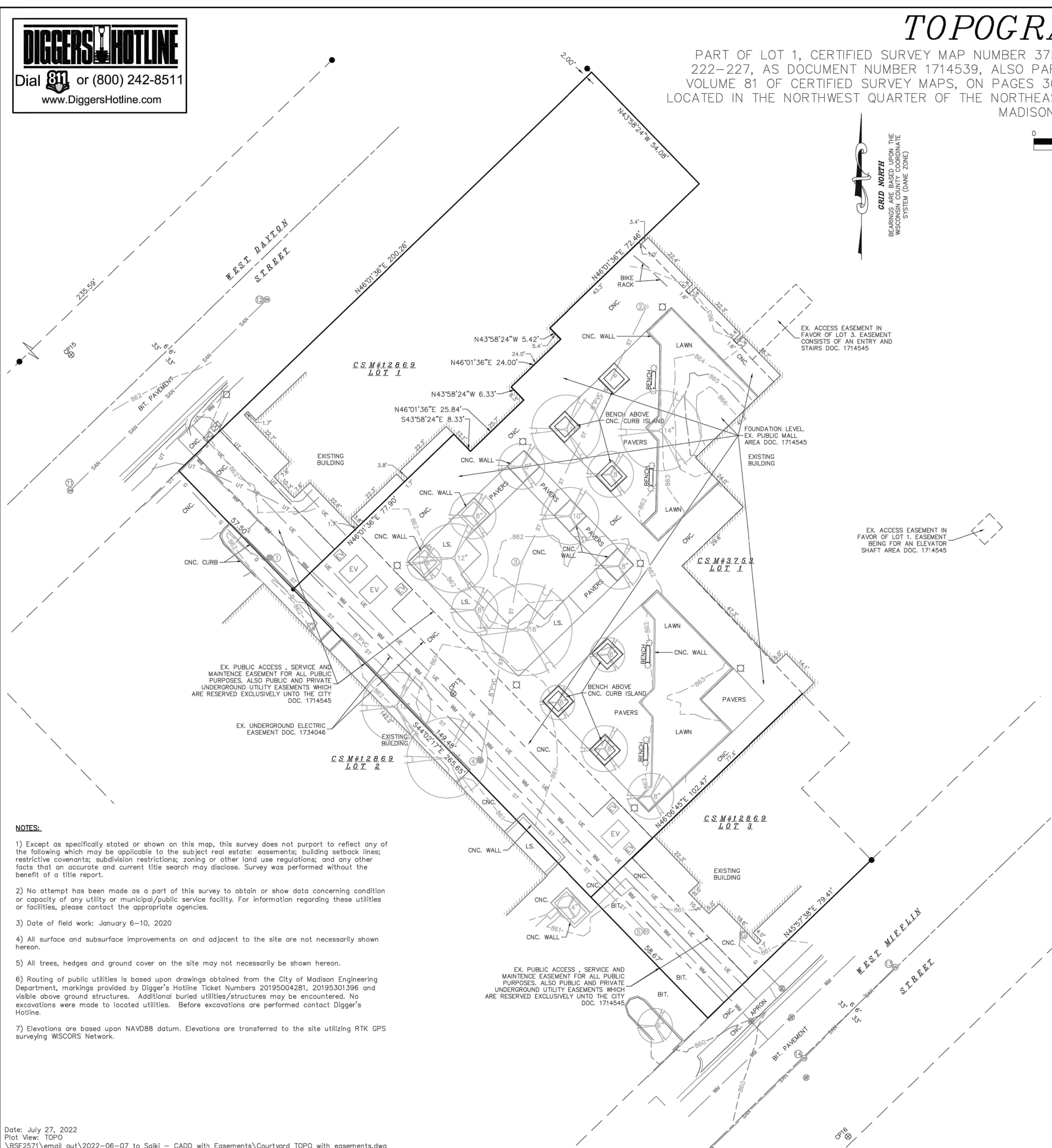
330 WEST MIFFLIN STREET
MADISON, WI 53703

NOT FOR
CONSTRUCTION

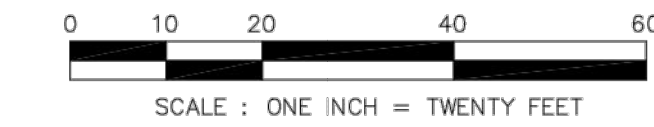


TOPOGRAPHIC SURVEY

PART OF LOT 1, CERTIFIED SURVEY MAP NUMBER 3753, AS RECORDED IN VOLUME 15 OF CERTIFIED SURVEY MAPS, ON PAGES 222-227, AS DOCUMENT NUMBER 1714539, ALSO PART OF LOT 1-3, CERTIFIED SURVEY MAP NUMBER 12869, AS RECORDED IN VOLUME 81 OF CERTIFIED SURVEY MAPS, ON PAGES 303-313, AS DOCUMENT NUMBER 4640103, ALL IN DANE COUNTY REGISTRY, LOCATED IN THE NORTHWEST QUARTER OF THE NORTHEAST QUARTER OF SECTION 23, TOWNSHIP 07 NORTH, RANGE 09 EAST, CITY OF MADISON, DANE COUNTY, WISCONSIN.



GRID NORTH
BEARINGS ARE BASED UPON THE
WISCONSIN COORDINATE
SYSTEM (DANE ZONE)



LEGEND	
⊙	CONTROL POINT
●	3/4" SOLID IRON ROD FOUND
⊙	1" IRON PIPE FOUND UNLESS NOTED
X	FOUND CHISELED "X" IN CONCRETE
●	FOUND NAIL
—OH—	OVERHEAD UTILITY WIRE
—G—	BURIED GAS LINE
—WM—	WATER MAIN
—SAN—	SANITARY SEWER
—ST—	STORM SEWER
—UT—	BURIED TELEPHONE
—UE—	BURIED ELECTRIC
—UV—	BURIED CABLE ACCESS TELEVISION LINE
—FO—	BURIED FIBER OPTIC
●	WATER VALVE
●	GAS VALVE
⊙	GAS METER
⊙	DECIDUOUS TREE (DBH IN INCHES)
⊙	CONIFEROUS TREE (DBH IN INCHES)
⊙	AIR CONDITIONER
⊙	TV PEDESTAL
⊙	ELECTRIC PEDESTAL
⊙	UTILITY POLE
⊙	LIGHT POLE
⊙	GROUND LIGHT
⊙	TELEPHONE PEDESTAL
⊙	FIRE HYDRANT
—	SIGN
—	GUY WIRE
⊙	ELECTRIC VAULT
⊙	BOLLARD
⊙	STORM SEWER INLET
⊙	ELECTRIC MANHOLE
⊙	SQUARE STORM SEWER CATCH BASIN
⊙	STORM SEWER MANHOLE
⊙	ROUND CATCH BASIN
⊙	COMMUNICATIONS HANDHOLE
⊙	SANITARY SEWER MANHOLE
()	INDICATES RECORDED AS

DISTANCES ARE MEASURED TO THE NEAREST HUNDREDTH OF A FOOT. BUILDINGS ARE MEASURED TO THE NEAREST TENTH OF A FOOT.

NUMBER	RIM/TC	ELEVATION	ELEVATION	ELEVATION	ELEVATION	DESCRIPTION
1	861.38 SE	858.79	S	858.83		STORM SEWER CATCH BASIN
2	862.73 FLR	860.18				STORM SEWER CATCH BASIN 1.1' X 1.1'
3	861.78 FLR	859.27				STORM SEWER CATCH BASIN 1.1' X 1.1'
4	860.19 NE	857.80	NW	856.42	SE 856.31	STORM SEWER MANHOLE
5	859.95 SW	855.22	NW	855.40	NE 855.55	STORM SEWER CATCH BASIN
11	861.41 NE	853.64	NW	853.91	SW 853.57 SE 854.20	SANITARY SEWER MANHOLE
12	862.36 NE	854.48	SW	854.34		SANITARY SEWER MANHOLE
13	861.17 SW	854.19	NE	854.22	NW 854.46	SANITARY SEWER MANHOLE
14	860.55 NE	853.93	SE	854.13	SW 853.93	SANITARY SEWER MANHOLE
15	859.04 SW	853.02	NE	853.06		SANITARY SEWER MANHOLE

- NOTES:**
- 1) Except as specifically stated or shown on this map, this survey does not purport to reflect any of the following which may be applicable to the subject real estate: easements; building setback lines; restrictive covenants; subdivision restrictions; zoning or other land use regulations; and any other facts that an accurate and current title search may disclose. Survey was performed without the benefit of a title report.
 - 2) No attempt has been made as a part of this survey to obtain or show data concerning condition or capacity of any utility or municipal/public service facility. For information regarding these utilities or facilities, please contact the appropriate agencies.
 - 3) Date of field work: January 6-10, 2020
 - 4) All surface and subsurface improvements on and adjacent to the site are not necessarily shown hereon.
 - 5) All trees, hedges and ground cover on the site may not necessarily be shown hereon.
 - 6) Routing of public utilities is based upon drawings obtained from the City of Madison Engineering Department, markings provided by Digger's Hotline Ticket Numbers 20195004281, 20195301396 and visible above ground structures. Additional buried utilities/structures may be encountered. No excavations were made to located utilities. Before excavations are performed contact Digger's Hotline.
 - 7) Elevations are based upon NAVD88 datum. Elevations are transferred to the site utilizing RTK GPS surveying WISCORS Network.

DESCRIPTION FURNISHED:
PART OF LOT 1, CERTIFIED SURVEY MAP NUMBER 3753, AS RECORDED IN VOLUME 15 OF CERTIFIED SURVEY MAPS, ON PAGES 222-227, AS DOCUMENT NUMBER 1714539, ALSO PART OF LOT 1-3, CERTIFIED SURVEY MAP NUMBER 12869, AS RECORDED IN VOLUME 81 OF CERTIFIED SURVEY MAPS, ON PAGES 303-313, AS DOCUMENT NUMBER 4640103, ALL IN DANE COUNTY REGISTRY, LOCATED IN THE NORTHWEST QUARTER OF THE NORTHEAST QUARTER OF SECTION 23, TOWNSHIP 07 NORTH, RANGE 09 EAST, CITY OF MADISON, DANE COUNTY, WISCONSIN.

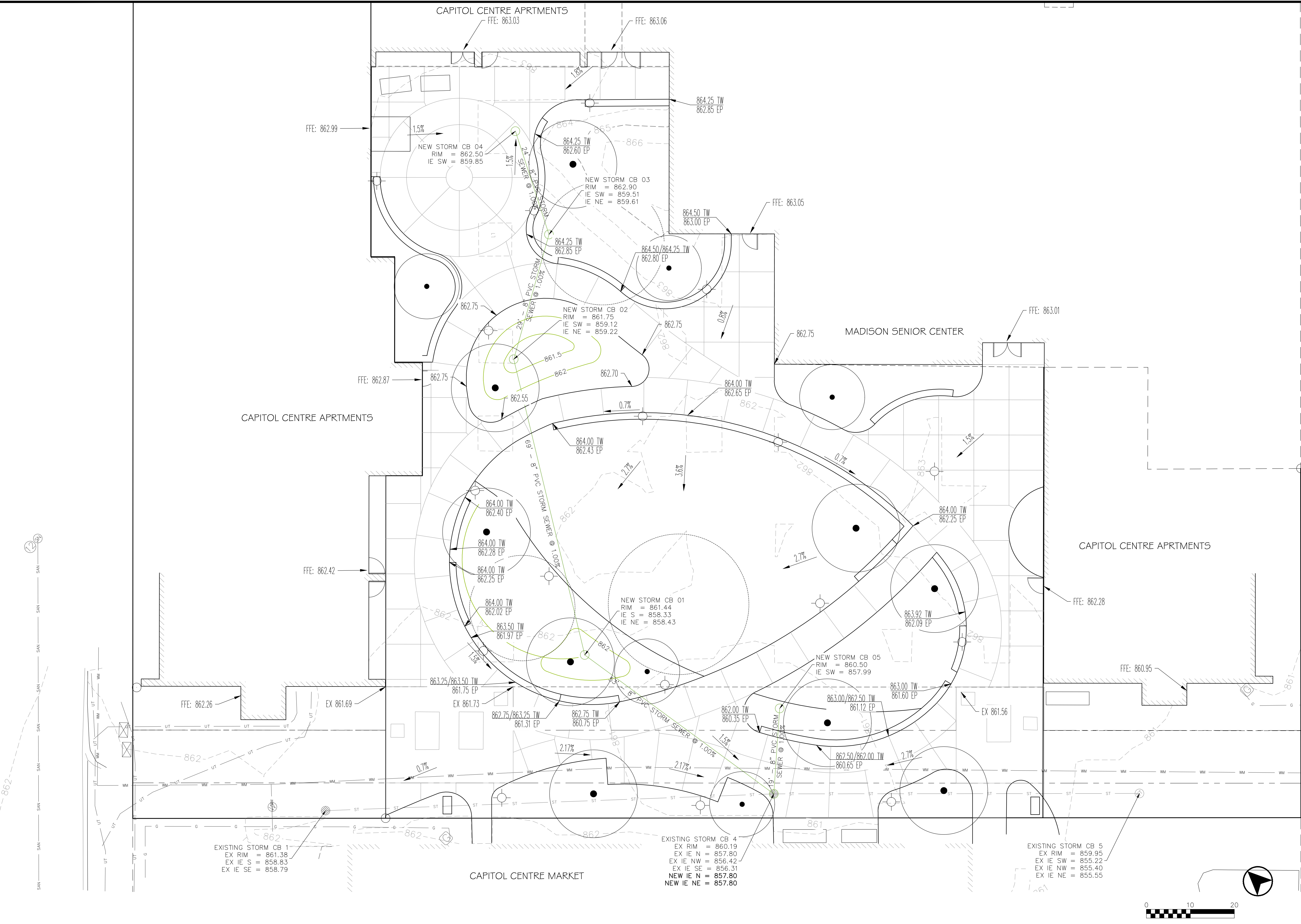
SURVEYED FOR :
CITY OF MADISON

SURVEYED BY :
Burse
surveying & engineering llc
2801 International Lane, Suite 101
Madison, WI 53704 608.250.9263
Fax: 608.250.9266
email: mburse@bse-inc.net
www.bursesurveyengr.com

NO.	REVISION	DATE
	UDC INFORMATIONAL SUBMITTAL	08/01/2022
CLIENT		
CITY OF MADISON PARKS DIVISION		
210 MARTIN LUTHER KING JR. BLVD MADISON, WI 53703		
PROJECT		
MADISON SENIOR CENTER COURTYARD		
330 WEST MIFFLIN STREET MADISON, WI 53703		
DRAWING		
SITE SURVEY		
SCALE	DATE	
1" = 20'-0"	08/01/2022	
DRAWN BY	CHECKED	REVIEWED
SH	AM	
APPROVED	DEPT. APPROVAL	
SEAL	SEAL	
NOT FOR CONSTRUCTION		
DEPT. PROJECT NO.	DRAWING NO.	
CONSULTANT'S PROJECT NO.		
2022-001		
TENDER NO.		



2801 INTERNATIONAL LANE, SUITE 101
MADISON, WISCONSIN 53704
PHONE: 608.250.9263



NO.	REVISION	DATE

CLIENT
CITY OF MADISON PARKS DIVISION
210 MARTIN LUTHER KING JR. BLVD
MADISON, WI 53703

PROJECT
MADISON SENIOR CENTER COURTYARD
330 WEST WIFFLIN STREET
MADISON, WI 53703

DRAWING
CONCEPTUAL GRADING PLAN

SCALE
1" = 10'-0"

DATE
08/01/2022

DRAWN BY
PDF

CHECKED
MLB

REVIEWED

APPROVED

DEPT. APPROVAL

SEAL

SEAL

NOT FOR CONSTRUCTION

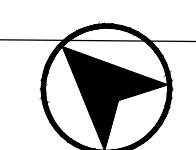
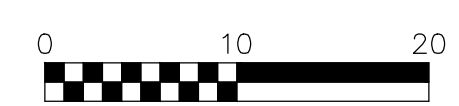
DEPT. PROJECT NO.

DRAWING NO.

CONSULTANT'S PROJECT NO.

C200

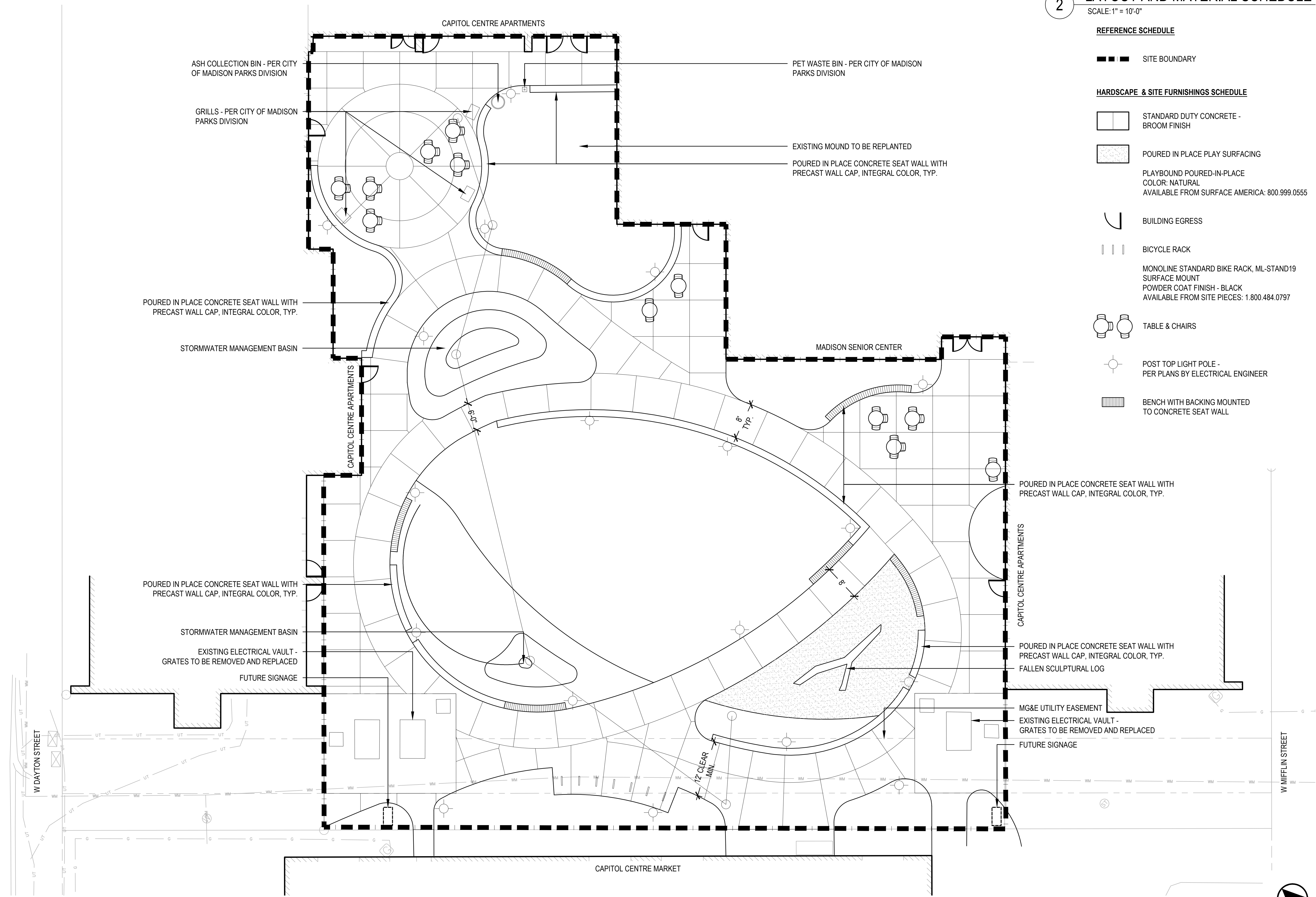
TENDER NO.



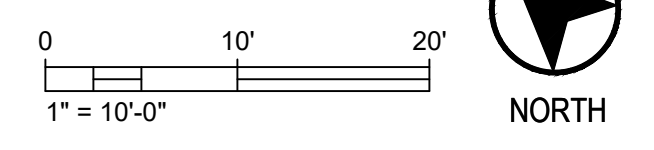


2 LAYOUT AND MATERIAL SCHEDULE
SCALE: 1" = 10'-0"

- REFERENCE SCHEDULE**
- SITE BOUNDARY
- HARDSCAPE & SITE FURNISHINGS SCHEDULE**
- STANDARD DUTY CONCRETE - BROOM FINISH
 - ▨ POURED IN PLACE PLAY SURFACING
 - PLAYBOUND POURED-IN-PLACE
COLOR: NATURAL
AVAILABLE FROM SURFACE AMERICA: 800.999.0555
 - ⌒ BUILDING EGRESS
 - ||| BICYCLE RACK
MONOLINE STANDARD BIKE RACK, ML-STAND19
SURFACE MOUNT
POWDER COAT FINISH - BLACK
AVAILABLE FROM SITE PIECES: 1.800.484.0797
 - ☺ TABLE & CHAIRS
 - ⊙ POST TOP LIGHT POLE - PER PLANS BY ELECTRICAL ENGINEER
 - ▨ BENCH WITH BACKING MOUNTED TO CONCRETE SEAT WALL



1 LAYOUT AND MATERIAL PLAN
SCALE: 1" = 10'-0"



CLIENT		CITY OF MADISON PARKS DIVISION	
210 MARTIN LUTHER KING JR. BLVD MADISON, WI 53703		PROJECT	
MADISON SENIOR CENTER COURTYARD		330 WEST MIFFLIN STREET MADISON, WI 53703	
DRAWING		LAYOUT AND MATERIAL PLAN	
SCALE	DATE	08/01/2022	
1" = 10'-0"	08/01/2022		
DRAWN BY	CHECKED	REVIEWED	
SH	AM		
APPROVED	DEPT. APPROVAL		
SEAL	SEAL		
DEPT. PROJECT NO.		DRAWING NO.	
CONSULTANT'S PROJECT NO.		2022-001	
TENDER NO.		L100	

NOT FOR CONSTRUCTION

2

PLANTING PLAN SCHEDULE

SCALE: 1" = 10'-0"

STORMWATER INFILTRATION MIX

Allium cernuum / Nodding Onion	1 gal
Amsonia tabernaemontana 'Blue Ice' / Blue Ice Eastern Bluestar	1 gal
Aster cordifolius / Blue Wood Aster	1 gal
Baptisia alba / White Wild Indigo	1 gal
Carex bicknellii / Prairie Sedge	1 gal
Carex vulpinoidea / Fox Sedge	1 gal
Dodecatheon meadia / Shooting Star	1 gal
Echinacea purpurea 'Prairie Splendor' / Prairie Splendor Coneflower	1 gal
Elymus virginicus / Virginia Wild Rye	1 gal
Eryngium yuccifolium 'Prairie Moon' / Prairie Moon Rattlesnake Master	1 gal
Filipendula x 'Kahome' / Kahome Meadowsweet	1 gal
Iris versicolor / Blue Flag	1 gal
Monarda fistulosa / Bergamot	1 gal
Panicum virgatum / Switch Grass	1 gal
Rudbeckia triloba 'Prairie Glow' / Prairie Glow Brown-eyed Susan	1 gal
Solidago rigida / Stiff Goldenrod	1 gal

FOUNDATION PLANTING

Allium x 'Summer Beauty' / Summer Beauty Ornamental Onion	1 gal
Amelanchier alnifolia 'Regent' / Regent Serviceberry	5 gal
Amsonia tabernaemontana / Eastern Bluestar	1 gal
Aronia melanocarpa 'UCONNAM012' TM / Ground Hug Black Chokeberry	2 gal
Buxus sinica insularis 'Wintergreen' / Wintergreen Korean Boxwood	1 gal
Calamagrostis x acutiflora 'Karl Foerster' / Karl Foerster Feather Reed Grass	1 gal
Calamintha nepeta 'Montrose White' / Montrose White Lesser Calamint	1 gal
Carex pensylvanica / Pennsylvania Sedge	1 gal
Caryopteris x clandonensis 'CT-9-12' TM / Beyond Midnight Bluebeard	2 gal
Ceanothus x 'Minimore' TM / Marie Gold New Jersey Tea	1 gal
Cephalanthus occidentalis 'SMCOSS' TM / Sugar Shack Buttonbush	2 gal
Chelone lyonii 'Hot Lips' / Hot Lips Pink Turtlehead	1 gal
Clethra alnifolia 'Novacein' TM / Summer Sparkler Summersweet	1 gal
Geranium maculatum / Spotted Geranium	1 gal
Heuchera villosa 'Autumn Bride' / Autumn Bride Hairy Alumroot	1 gal
Hydrangea quercifolia 'Pee Wee' / Pee Wee Oakleaf Hydrangea	3 gal
Iris sibirica 'Caesar's Brother' / Caesar's Brother Siberian Iris	1 gal
Juniperus procumbens 'Nana' / Dwarf Japanese Garden Juniper	3 gal
Nepeta x faassenii 'Purrsian Blue' / Purrsian Blue Catmint	1 gal
Panicum virgatum 'Shenandoah' / Shenandoah Switch Grass	1 gal
Rosa x 'Nearly Wild' / Nearly Wild Floribunda Rose	1 gal
Salvia nemorosa 'May Night' / May Night Sage	1 gal
Schizachyrium scoparium 'Carousel' / Carousel Little Bluestem	1 gal
Sesleria autumnalis / Autumn Moon Grass	1 gal
Sporobolus heterolepis 'Tara' / Tara Prairie Dropseed	1 gal
Taxus cuspidata 'Dwarf Bright Gold' / Dwarf Golden Japanese Yew	2 gal
Zizia aurea / Golden Alexander	1 gal

TURF AREA

'MADISON PARKS TURFGRASS MIX' BY LA CROSS SEED - LA CROSSE, WI

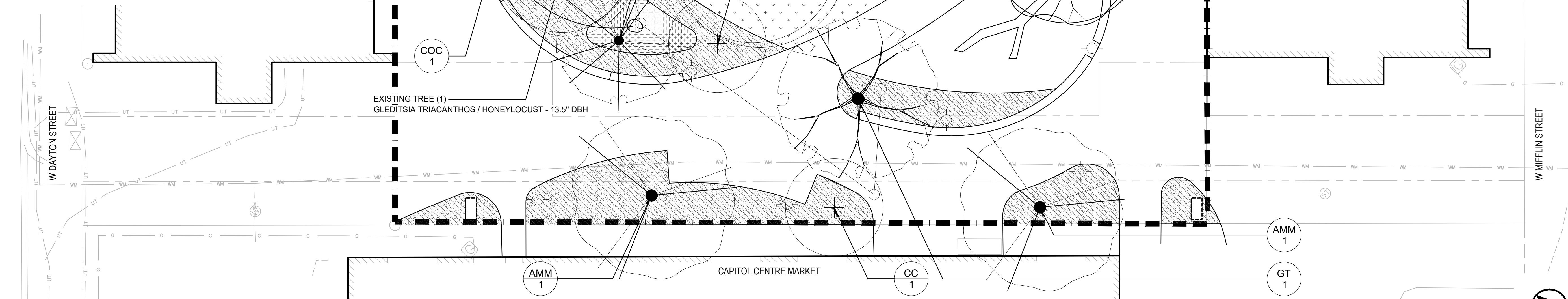
SHRUB & PERENNIAL MIX

Achillea x 'Moonshine' / Moonshine Yarrow	1 gal
Allium x 'Millenium' / Millenium Ornamental Onion	1 gal
Asclepias tuberosa / Butterfly Milkweed	1 gal
Calamagrostis x acutiflora 'Karl Foerster' / Karl Foerster Feather Reed Grass	1 gal
Calamintha nepeta nepeta / Lesser Calamint	1 gal
Echinacea pallida / Pale Purple Coneflower	1 gal
Eragrostis spectabilis / Purple Lovegrass	1 gal
Eryngium x zabelli 'Big Blue' / Big Blue Sea Holly	1 gal
Geranium x 'Rozanne' / Rozanne Cranesbill	1 gal
Hemerocallis x / Hybrid Daylily	1 gal
Hosta x / Hybrid Plantain Lily	1 gal
Iris sibirica 'Caesar's Brother' / Caesar's Brother Siberian Iris	1 gal
Knaulia maedonica / Crimson Pincushion	1 gal
Rosa x 'Nearly Wild' / Nearly Wild Floribunda Rose	2 gal
Rudbeckia fulgida deamii / Deam's Coneflower	1 gal
Salvia nemorosa 'Caradonna' / Caradonna Meadow Sage	1 gal
Schizachyrium scoparium 'Standing Ovation' / Standing Ovation Little Bluestem	1 gal
Sporobolus heterolepis 'Tara' / Tara Prairie Dropseed	1 gal
Symphoricarum oblongifolium 'October Skies' / October Skies Fall Aster	1 gal
Verbena stricta / Hoary Vervain	1 gal
Veronica longifolia 'Alkiss' / First Kiss Pink Speedwell	1 gal

1

PLANTING PLAN

SCALE: 1" = 10'-0"



3

TREE SCHEDULE

SCALE: 1" = 10'-0"

ORNAMENTAL TREES	CODE	BOTANICAL / COMMON NAME	CONT.	SIZE	QTY
	AAB	Amelanchier x grandiflora 'Autumn Brilliance' / Autumn Brilliance Serviceberry	B & B	UPRIGHT MULTI-STEM	1
	CC	Cercis canadensis / Eastern Redbud	B & B	2" Cal	2
	CA3	Cornus alternifolia / Pagoda Dogwood	B & B	2" Cal, Specimen Quality	1
	HS2	Hamamelis vernalis / Ozark Witchhazel	B & B	2" Cal, Specimen Quality	1

SHADE TREES	CODE	BOTANICAL / COMMON NAME	CONT.	SIZE	QTY
	AMM	Acer miyabei 'Morton' TM / State Street Miyabei Maple	B & B	2" Cal	3
	BC	Betula nigra 'Cully' TM / Heritage River Birch	B & B	2" CAL, 6' HT (MIN.)	2
	COC	Celtis occidentalis 'ChicagoLand' / Common Hackberry	B & B	2" Cal	3
	GT	Gleditsia triacanthos 'Skycole' / Skyline Honeylocust	B & B	2" Cal	1

EXISTING TREE TO BE PROTECTED IN PLACE: 3



NO.	REVISION	DATE

CLIENT
CITY OF MADISON PARKS DIVISION
210 MARTIN LUTHER KING JR. BLVD
MADISON, WI 53703

PROJECT
MADISON SENIOR CENTER COURTYARD
330 WEST MIFFLIN STREET
MADISON, WI 53703

DRAWING
PLANTING PLAN

SCALE: 1" = 10'-0" DATE: 08/01/2022

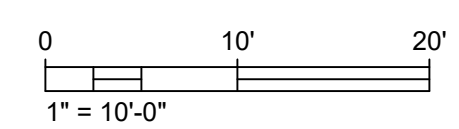
DRAWN BY: SH CHECKED: AM REVIEWED:

APPROVED: DEPT. APPROVAL:

SEAL: SEAL:

NOT FOR CONSTRUCTION

DEPT. PROJECT NO. DRAWING NO.
CONSULTANT'S PROJECT NO. 2022-001
TENDER NO. **L200**





1 AERIAL VIEW FROM CAPITOL CENTRE MARKET
SCALE: NTS



2 AERIAL VIEW FROM MADISON SENIOR CENTER
SCALE: NTS



3 PARK ENTRANCE FROM WEST MIFFLIN STREET
SCALE: NTS



4 PARK ENTRANCE FROM WEST DAYTON STREET
SCALE: NTS

NO.		UDC INFORMATIONAL SUBMITTAL		08/01/2022	
REVISION				DATE	
CLIENT					
CITY OF MADISON PARKS DIVISION					
210 MARTIN LUTHER KING JR. BLVD MADISON, WI 53703					
PROJECT					
MADISON SENIOR CENTER COURTYARD					
330 WEST MIFFLIN STREET MADISON, WI 53703					
DRAWING					
LANDSCAPE RENDERINGS					
SCALE		DATE			
NTS		08/01/2022			
DRAWN BY		CHECKED		REVIEWED	
SH		AM			
APPROVED			DEPT. APPROVAL		
SEAL			SEAL		
NOT FOR CONSTRUCTION					
DEPT. PROJECT NO.		DRAWING NO.			
CONSULTANT'S PROJECT NO. 2022-001		L300			
TENDER NO.					



1 CAPITOL CENTRE APARTMENTS PATIO
SCALE: NTS



2 MADISON SENIOR CENTER PATIO
SCALE: NTS

UDC INFORMATIONAL SUBMITTAL		08/01/2022
NO.	REVISION	DATE

CLIENT

CITY OF MADISON PARKS DIVISION
210 MARTIN LUTHER KING JR. BLVD
MADISON, WI 53703

PROJECT

MADISON SENIOR CENTER COURTYARD
330 WEST MIFFLIN STREET
MADISON, WI 53703

DRAWING

LANDSCAPE RENDERINGS

SCALE: NTS DATE: 08/01/2022

DRAWN BY: SH CHECKED: AM REVIEWED:

APPROVED: DEPT. APPROVAL:

SEAL: SEAL:

NOT FOR CONSTRUCTION

DEPT. PROJECT NO. DRAWING NO.

CONSULTANT'S PROJECT NO. 2022-001 TENDER NO. **L301**



Mead & Hunt

Mead & Hunt, Inc.
2440 Deming Way
Middleton, WI 53562
phone: 608-273-6380
meadhunt.com

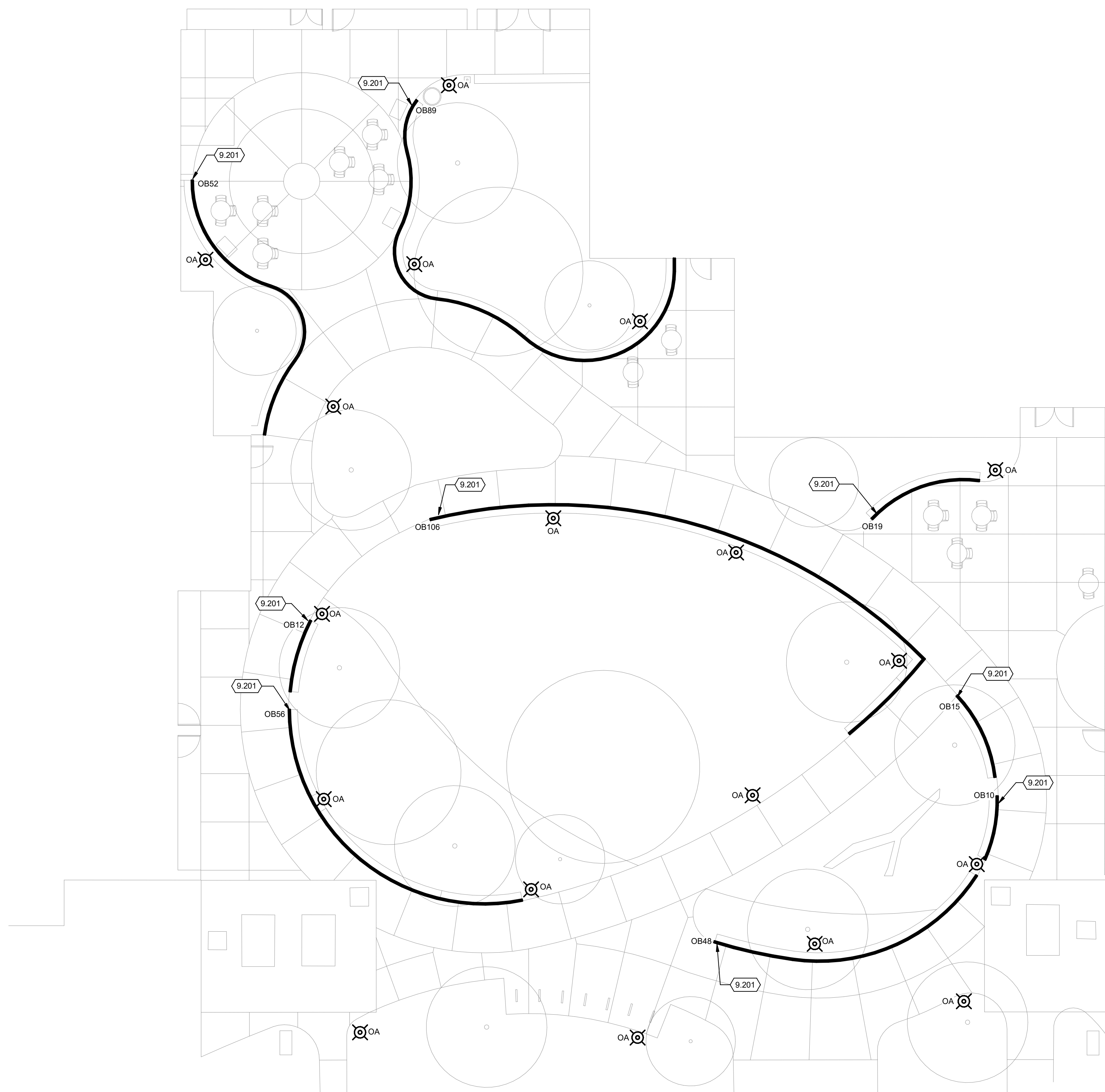
© Copyright 2022 Mead & Hunt, Inc.
This document, or any portion thereof, shall not be duplicated, disclosed, or used on any other project or extension of this project except by written agreement with Mead & Hunt, Inc. Mead & Hunt shall not be responsible for any unauthorized use of, or alteration to these documents.

ELECTRICAL KEYED NOTES

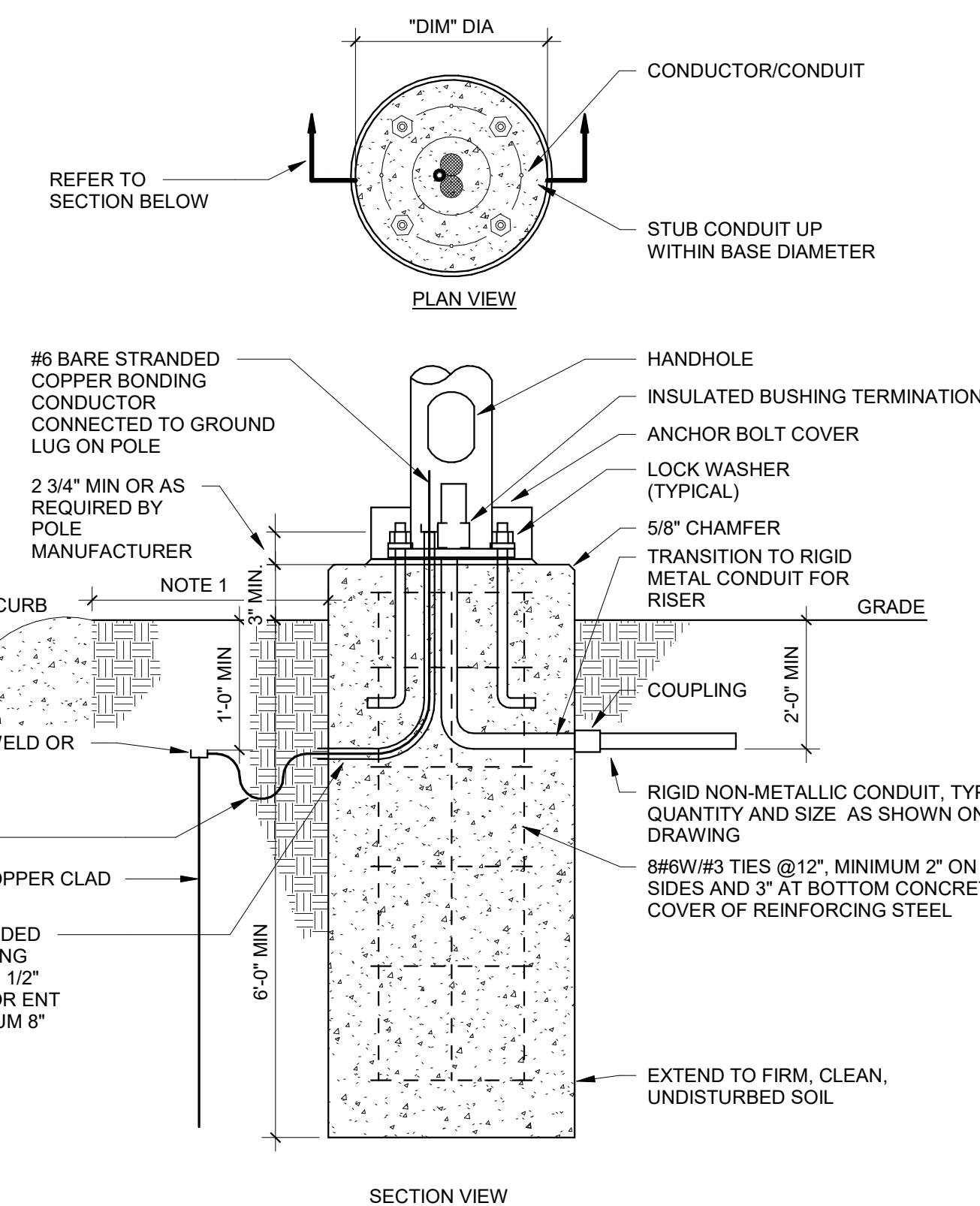
9.201 LED FLEXIBLE NEON SHALL BE INSTALLED IN CHANNEL UNDER BENCH. SECURE WITH MANUFACTURER MOUNTING CLIP EVERY 18" OR AS RECOMMENDED BY MANUFACTURER. COORDINATE CHANNEL MOUNTING WITH ARCHITECTURAL DETAILS ON UNDERSIDE OF BENCH. IP67 RATED POWER SUPPLIES SHALL BE LOCATED WITHIN INGROUND QUAZITE BOXES LOCATED IN GRASS AREAS. POWER SUPPLIES MAY BE GROUPED TO MINIMIZE INGROUND BOX QUANTITIES. MOST FIXTURES WILL CONTAIN MULTIPLE RUNS OF FLEXIBLE NEON TO ACHIEVE NOTED RUN LENGTHS. CONSULT MANUFACTURER OF APPROVED PRODUCT TO COORDINATE MAXIMUM RUN LENGTHS OF A SINGLE FIXTURE (ACOLYTE FIXTURE MAX RUN IS 42').

SITE SYMBOLS

- ELECTRIC HANDHOLE
- HANDHOLE, GENERIC
- ELECTRIC MANHOLE
- ELECTRIC PEDESTAL BOX
- POST TOP LIGHT POLE
- POWER POLE WITH LIGHT



1 SITE ELECTRICAL PLAN
1" = 10'-0"



- NOTES**
1. MOUNT 3'-0" FROM CURB OR CENTER IN ISLAND (IF APPLICABLE OR 1'-0" FROM SIDEWALK EDGE).
 2. CONTRACTOR SHALL USE TEMPLATE FURNISHED WITH POLE TO SET ANCHOR BOLTS. CENTER ON CONCRETE BASE.
 3. ANCHOR BOLTS SHALL BE ORIENTED PARALLEL TO THE CURB LINE.
 4. NON-SHRINK GROUT BETWEEN POLE AND BASE. PROVIDE A CHANNEL THROUGH GROUT FOR POLE INTERIOR DRAINAGE.
 5. EXPOSED SURFACES TROWELLED SMOOTH.
 6. ANCHOR BOLTS FOR POLE AS REQUIRED BY MANUFACTURER.
 7. CONCRETE BASE PER SPECIFICATIONS.

3 POLE BASE DETAIL W/ GND
1/8" = 1'-0"

NO.	REVISION	DATE

CLIENT
CITY OF MADISON PARKS DIVISION

PROJECT
210 MARTIN LUTHER KING JR. BLVD
MADISON, WI 53703

DRAWING
MADISON SENIOR CENTER COURTYARD

DRAWING
330 WEST MIFFLIN STREET
MADISON, WI 53703

DRAWING
CONCEPTUAL ELECTRICAL PLAN

SCALE
As indicated

DATE
08/01/2022

DRAWN
KMR

CHECKED
M&H

REVIEWED
KMR

APPROVED

DEPT. APPROVAL

DEPT. PROJECT NO.

DRAWING NO.

CONSULTANT'S PROJECT NO.
2022-001

TENDER NO.
E100

NOT FOR CONSTRUCTION

LUMINAIRE SCHEDULE

DES	MANUFACTURER	CATALOG NUMBER	DESCRIPTION	LED DATA	VOLTAGE	MOUNTING	DRIVER TYPE	FIXTURE DEPTH	INPUT LOAD	LUMENS	ACCEPTACLE MANUFACTURERS	KEYED NOTES
OA	SELUX	MST-DG-1-MP350-30-10'-BK-UNV-HL50	LOW GLARE, DARK SKY LED POST TOP ON 10' POST WITH HI/LOW 50% DIM	LED, 3000K	277 V	POST TOP	F	26"	33 VA	2965	LITHONIA RADEAN	
OB10	ACOLYTE	NLC-3.030-E-NLCMOUNTCLIPV2	10' LONG LED SIDE BENDING SILICONE ENCASED FLEXIBLE LINEAR LED	LED, 3000K	277 V	SPECIAL	D	7/8"	96 VA	63LM/FT	LEDLINEAR	1
OB12	ACOLYTE	NLC-3.030-E-NLCMOUNTCLIPV2	12' LONG LED SIDE BENDING SILICONE ENCASED FLEXIBLE LINEAR LED	LED, 3000K	277 V	SPECIAL	D	7/8"	96 VA	63LM/FT	LEDLINEAR	1
OB15	ACOLYTE	NLC-3.030-E-NLCMOUNTCLIPV2	15' LONG LED SIDE BENDING SILICONE ENCASED FLEXIBLE LINEAR LED	LED, 3000K	277 V	SPECIAL	D	7/8"	96 VA	63LM/FT	LEDLINEAR	1
OB19	ACOLYTE	NLC-3.030-E-NLCMOUNTCLIPV2	19' LONG LED SIDE BENDING SILICONE ENCASED FLEXIBLE LINEAR LED	LED, 3000K	277 V	SPECIAL	D	7/8"	96 VA	63LM/FT	LEDLINEAR	1
OB48	ACOLYTE	NLC-3.030-E-NLCMOUNTCLIPV2	48' LONG LED SIDE BENDING SILICONE ENCASED FLEXIBLE LINEAR LED	LED, 3000K	277 V	SPECIAL	D	7/8"	192 VA	63LM/FT	LEDLINEAR	1
OB52	ACOLYTE	NLC-3.030-E-NLCMOUNTCLIPV2	52' LONG LED SIDE BENDING SILICONE ENCASED FLEXIBLE LINEAR LED	LED, 3000K	277 V	SPECIAL	D	7/8"	192 VA	63LM/FT	LEDLINEAR	1
OB56	ACOLYTE	NLC-3.030-E-NLCMOUNTCLIPV2	56' LONG LED SIDE BENDING SILICONE ENCASED FLEXIBLE LINEAR LED	LED, 3000K	277 V	SPECIAL	D	7/8"	192 VA	63LM/FT	LEDLINEAR	1
OB89	ACOLYTE	NLC-3.030-E-NLCMOUNTCLIPV2	89' LONG LED SIDE BENDING SILICONE ENCASED FLEXIBLE LINEAR LED	LED, 3000K	277 V	SPECIAL	D	7/8"	384 VA	63LM/FT	LEDLINEAR	1
OB106	ACOLYTE	NLC-3.030-E-NLCMOUNTCLIPV2	106' LONG LED SIDE BENDING SILICONE ENCASED FLEXIBLE LINEAR LED	LED, 3500K	277 V	SPECIAL	D	7/8"	384 VA	63LM/FT	LEDLINEAR	1

BALLAST/DRIVER: (SEE SPECIFICATIONS)

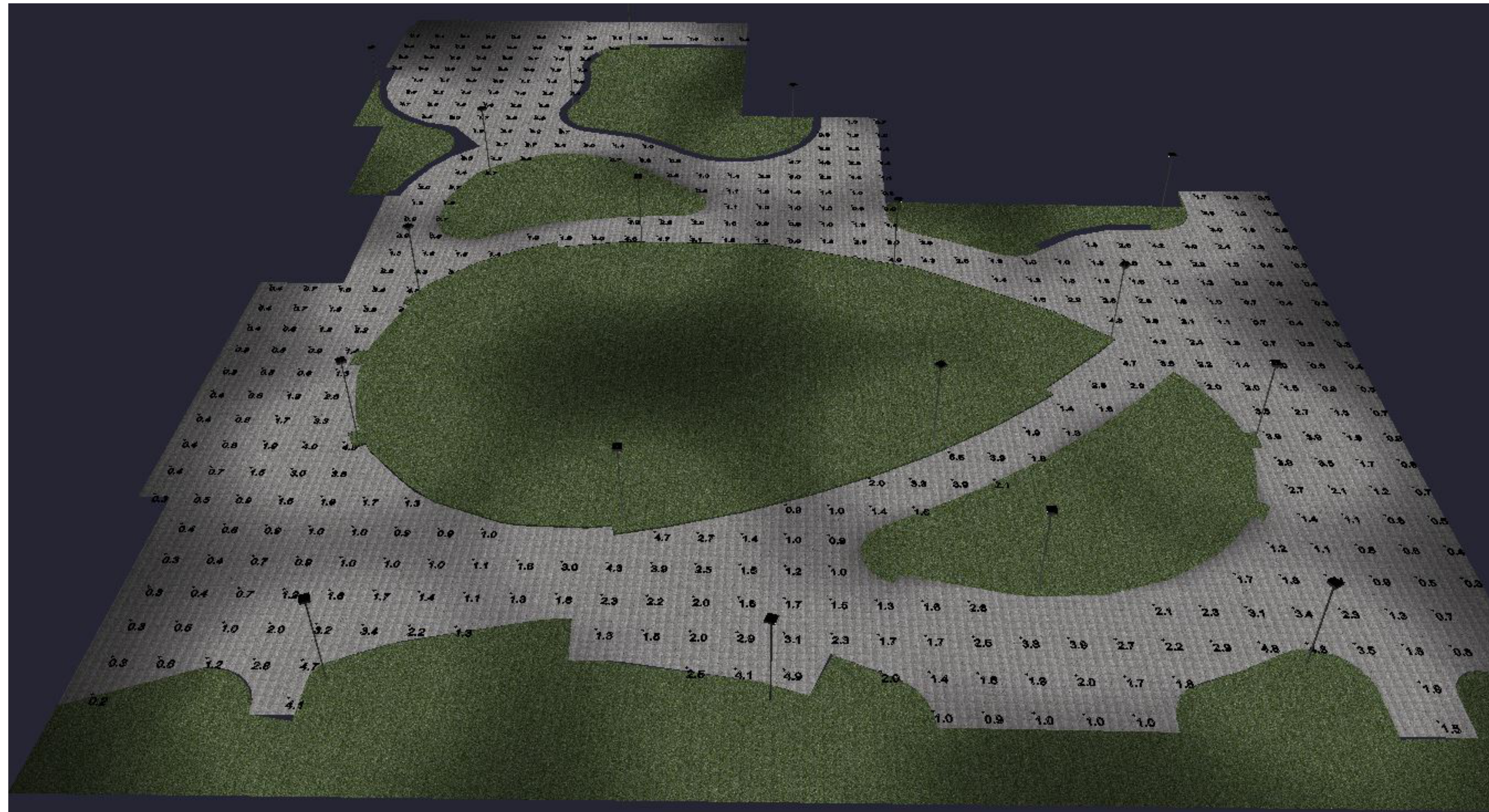
- A LED DIMMABLE DRIVER (0-10V) - 10% DIM
- B LED DIMMABLE DRIVER (0-10V) - 1% DIM
- C LED DIMMABLE DRIVER (ELV)
- D LED NON-DIMMABLE DRIVER
- E EMERGENCY (BATTERY) (DRIVER)
- F LED STEP-DIMMING DRIVER

LUMINAIRE SCHEDULE GENERAL NOTES:

- REFER TO DIVISION 28 SPECIFICATION FOR ADDITIONAL INFORMATION BEFORE ORDERING.
- ALL LED LUMINAIRES MUST COMPLY WITH LM-79 AND LM-80 TESTING STANDARDS. L70 LIFE SHALL HAVE A MINIMUM OF 50,000 HOURS.
- ANY PROPOSED SUBSTITUTIONS MUST BE SUBMITTED WITH PHOTOMETRIC CALCULATIONS AND CATALOG SHEETS WITH DATA TO PROVE EQUAL CHARACTERISTICS. PROVIDE PHYSICAL SAMPLES OF PROPOSED SUBSTITUTIONS UPON REQUEST.
- EC SHALL VERIFY AND COORDINATE ALL LUMINAIRE TRIMS/FLANGES WITH RESPECTIVE CEILING TYPES SCHEDULED AND/OR SUBMITTED BY THE GC PRIOR TO ORDERING OF THE LUMINAIRES. SCHEDULE INDICATES TRIM TYPES BASED ON THE GENERIC CEILING INFORMATION AVAILABLE AT THE TIME BIDDING DOCUMENTS WERE ISSUED AND DOES NOT REFLECT ACTUAL THICKNESS OF GYPSUM WALL BOARD OR PLASTER CEILING OR EXACT GRID TYPE SPECIFIED BY THE ARCHITECT.

LUMINAIRE SCHEDULE KEYED NOTES:

- LED FLEXIBLE NEON FIXTURE. FIXTURE MAY CONTAIN MULTIPLE RUNS TO FULFILL LENGTH REQUIRED. COORDINATE EXACT LENGTH REQUIRED WITH BENCH DETAILS. POWER SUPPLIES ARE REMOTE AND SHALL BE IP67 RATED. PROVIDE WITH MOUNTING CLIPS AND SUPPORT FIXTURE AS RECOMMENDED BY MANUFACTURER.
- WET LOCATION LISTED.
- PROVIDE WITH 10' TALL ROUND STRAIGHT ALUMINUM POLE AND OPTIONAL BASE COVER. FINISH SHALL MATCH FINAL FIXTURE FINISH SELECTION. SOME POLES MAY BE PROVIDED WITH GFCI RECEPTACLE AND WEATHER PROOF COVER. SEE PLANS FOR COORDINATION.



1 Park Lighting Photometric Rendering

LIGHTING CONTROL INTENT:

PROVIDE SMALL CENTRALIZED LOW VOLTAGE RELAY PANEL, 8-RELAY OR SIMILAR WITH TIMECLOCK FUNCTION. PANEL LOCATION TBD BUT IF LOCATED OUTSIDE, PANEL SHALL BE MOUNTED IN NEMA 4 RATED ENCLOSURE.

SOFTWARE MUST BE PROVIDED WITH LIGHTING CONTROL SYSTEM FOR MAINTENANCE AND SCHEDULING PURPOSES. OWNER TRAINING UPON COMPLETION OF LIGHTING CONTROL COMMISSIONING SHALL BE PROVIDED.

SWITCH LABELING INTENT:
 • (R#) INDICATES CENTRALIZED LOW VOLTAGE RELAY CONTROL WHERE THE NUMBER IS THE CORRESPONDING RELAY

CONTROL INTENT BY SPACE:

- EXTERIOR LIGHTING:
- PROVIDE LOW VOLTAGE LIGHTING CONTROL WITH STEP DIM POWER SUPPLY FOR DIMMING TO 50% OF ALL POLE MOUNTED AREA LIGHTING. LIGHTING SHALL TURN ON AT DUSK AND DIM TO 50% AT 10PM. LIGHTING WILL TURN OFF AT DAWN.
 - PROVIDE LOW VOLTAGE LIGHTING CONTROL FOR ON/OFF RELAY CONTROL OF ALL UNDER BENCH LIGHTING. LIGHTING SHALL TURN ON AT DUSK AND OFF AT 10PM (PARK CLOSING).



Mead & Hunt

Mead & Hunt, Inc.
 2440 Deming Way
 Middleton, WI 53562
 phone: 608-273-6380
 meadhunt.com

© Copyright 2022 Mead & Hunt, Inc. This document, or any portion thereof, shall not be duplicated, disclosed, or used on any other project or extension of this project except by written agreement with Mead & Hunt, Inc. Mead & Hunt shall not be responsible for any unauthorized use of, or alteration to these documents.

NO.	REVISION	DATE

CLIENT
 CITY OF MADISON PARKS DIVISION

210 MARTIN LUTHER KING JR. BLVD
 MADISON, WI 53703

PROJECT
 MADISON SENIOR CENTER COURTYARD

330 WEST MIFFLIN STREET
 MADISON, WI 53703

DRAWING
 CONCEPTUAL ELECTRICAL DETAILS

SCALE	DATE
As indicated	08/01/2022

DRAWN	CHECKED	REVIEWED
KMR	M&H	KMR

APPROVED	DEPT. APPROVAL

SEAL	SEAL

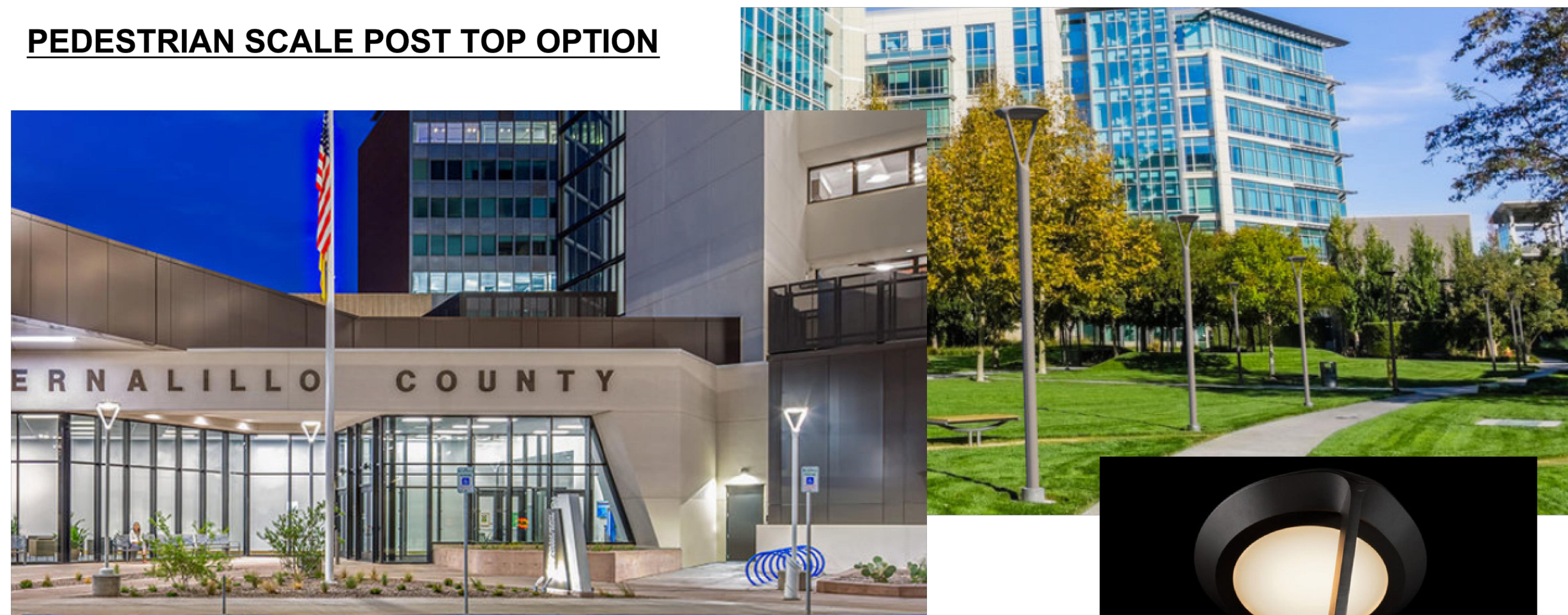
NOT FOR
CONSTRUCTION

DEPT. PROJECT NO.	DRAWING NO.

CONSULTANT'S PROJECT NO.
 2022-001
 TENDER NO.

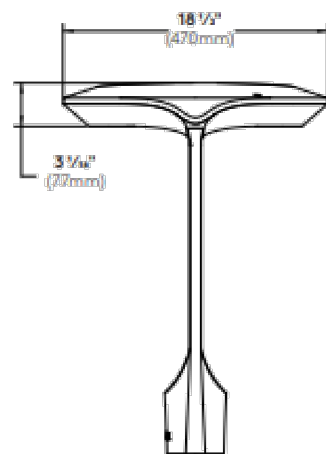
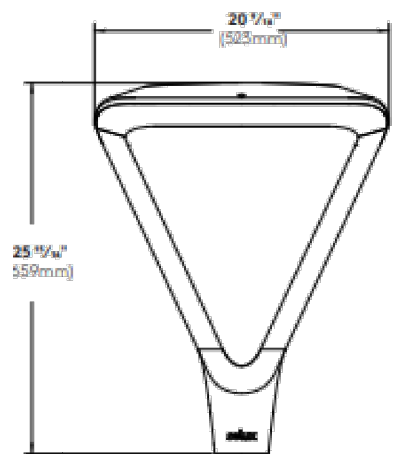
E200

PEDESTRIAN SCALE POST TOP OPTION



Gen5/DG Optic

Mistella™ LED

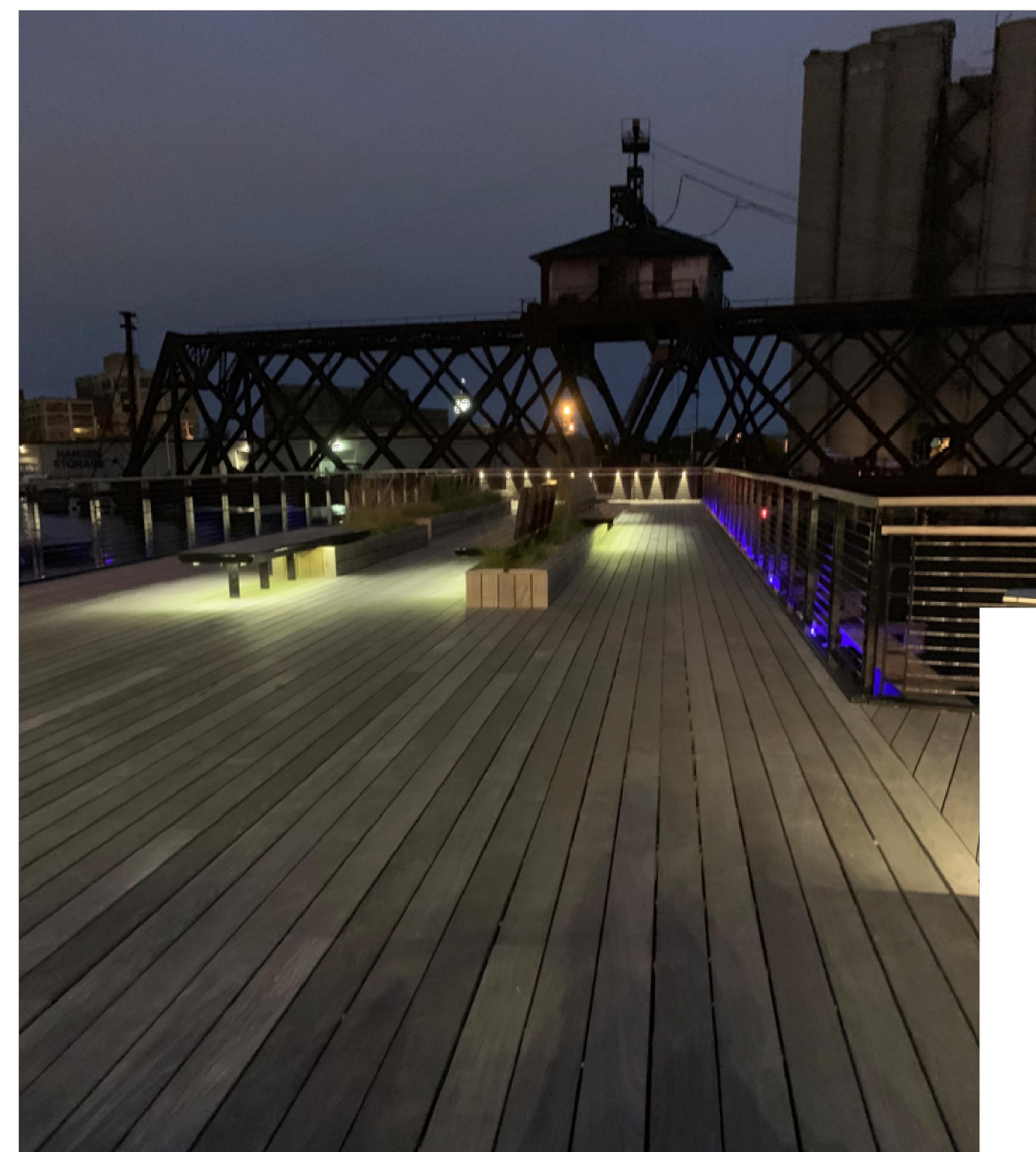


selux

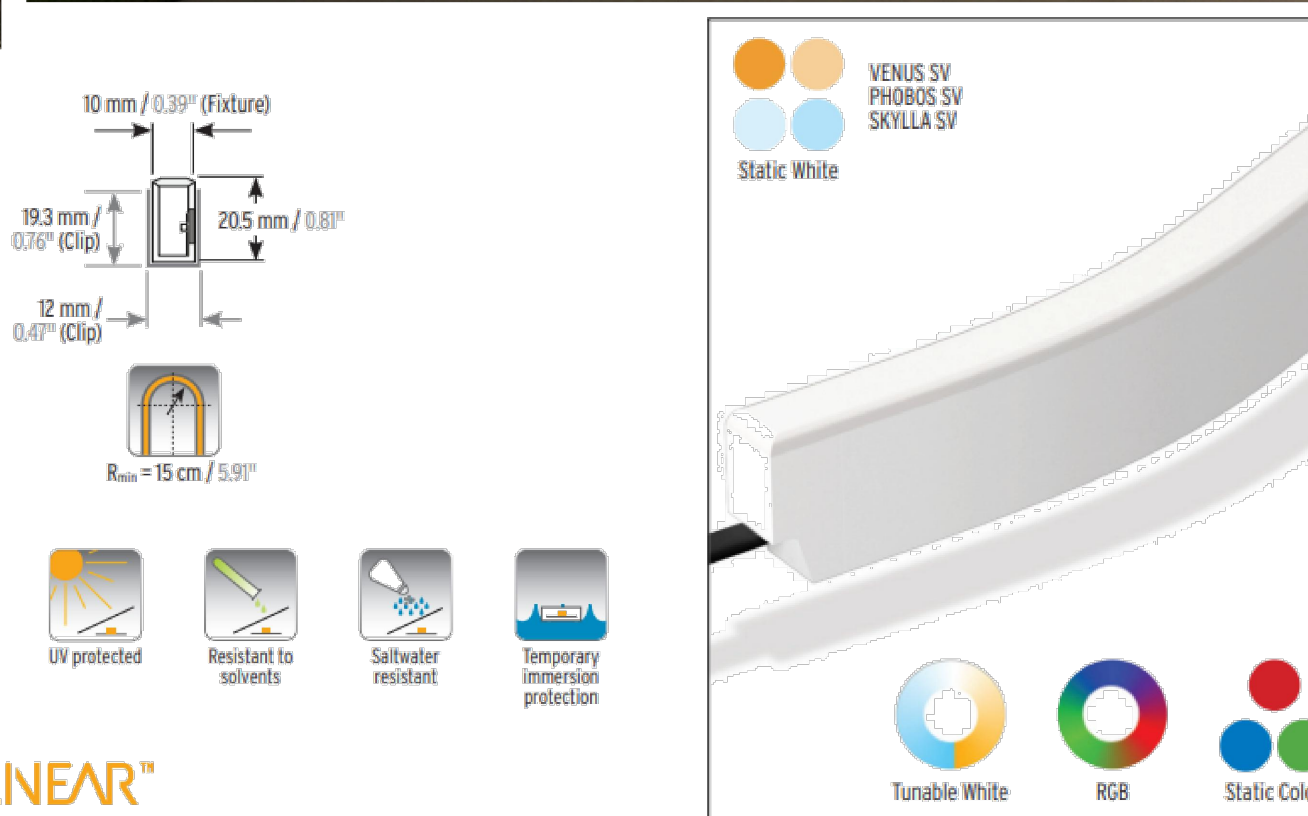


BUG Rating B1-U0-G1

UNDER BENCH LIGHTING OPTION



Venus SV Stainless Steel Mounting Bracket
Stainless steel surface mounting bracket. Recommended to use every 18 inches to hold the fixture, but will not prevent sagging in between.
1-1/4" x 5/8" x 1"



VENUS SV IP67 Static White/Tunable White/Static Color/RGB

LED LINEAR®
lighting solutions

1 PEDESTRIAN SCALE POST TOP CUT SHEET

SCALE: NTS

2 UNDER BENCH LIGHTING CUT SHEET

SCALE: 1 1/2" = 1'-0"



CLIENT		CITY OF MADISON PARKS DIVISION	
210 MARTIN LUTHER KING JR. BLVD MADISON, WI 53703		PROJECT	
MADISON SENIOR CENTER COURTYARD		330 WEST MIFFLIN STREET MADISON, WI 53703	
DRAWING		ELECTRICAL CUT SHEETS	
SCALE	DATE	DRAWN BY	
NTS	08/01/2022	SH	
CHECKED	REVIEWED	APPROVED	
AM		DEPT. APPROVAL	
SEAL		SEAL	
NOT FOR CONSTRUCTION			
DEPT. PROJECT NO.	DRAWING NO.	CONSULTANT'S PROJECT NO.	
		2022-001	
TENDER NO.		E300	